



VERMONT PLACE AND HIGHLAND BOULEVARD

September 21, 2021

Background

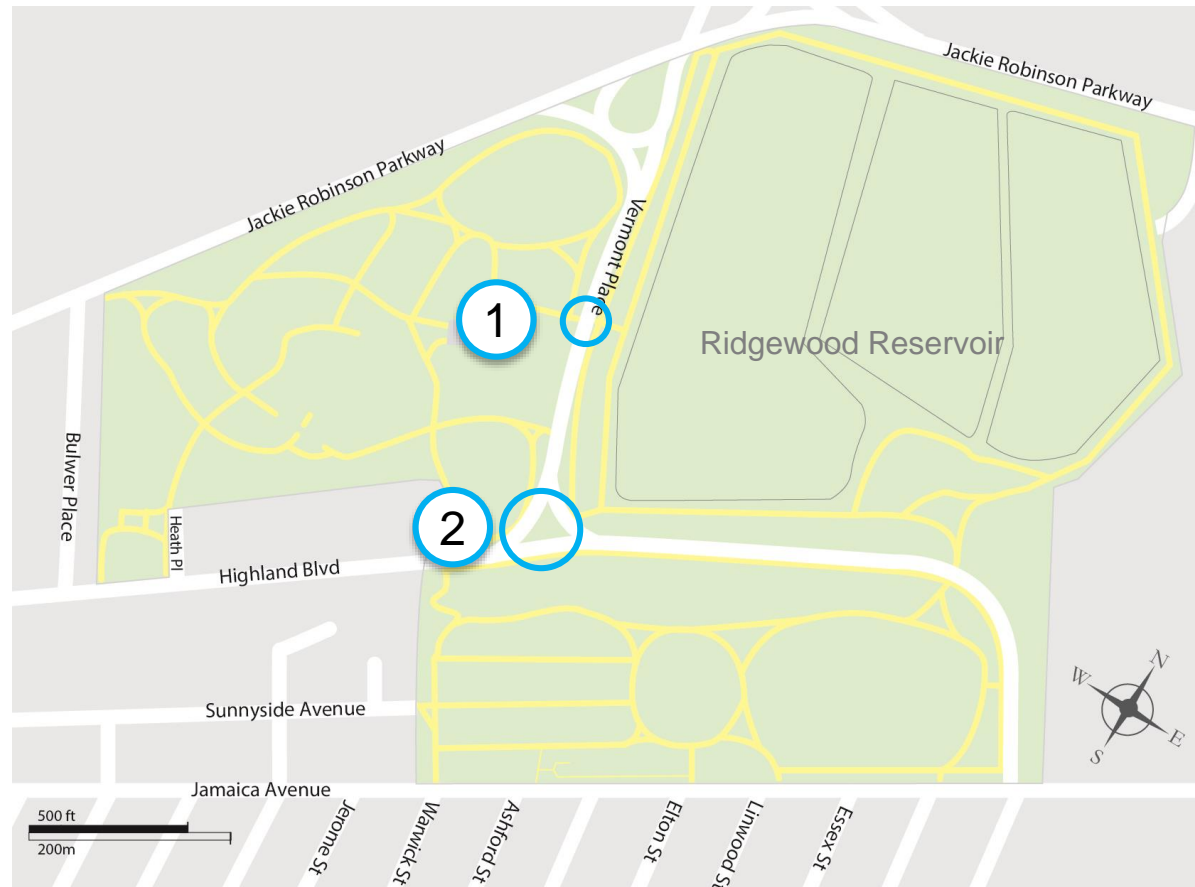
1

BACKGROUND

Project builds on past DOT work and community requests

- 1 Signal installed on Vermont Place near parking lot in 2018
- 2 Community request and coordination with multiple community groups for crossing improvements at Vermont Place and Highland Boulevard

Adjacent to existing park paths at Ridgewood Reservoir and Highland Park



Map courtesy of: forestparktrust.org

SAFETY DATA

- There have been 3 severe injuries due to vehicle crashes at Vermont Place and Highland Boulevard

Vermont Place and Highland Boulevard, Qn

Injury Summary, 2014-2018 (5 years)

	Total Injuries	Severe Injuries	Fatalities	KSI
Pedestrian	0	0	0	0
Bicyclists	0	0	0	0
Motor Vehicle Occupant	20	3	0	3
Total	20	3	0	3

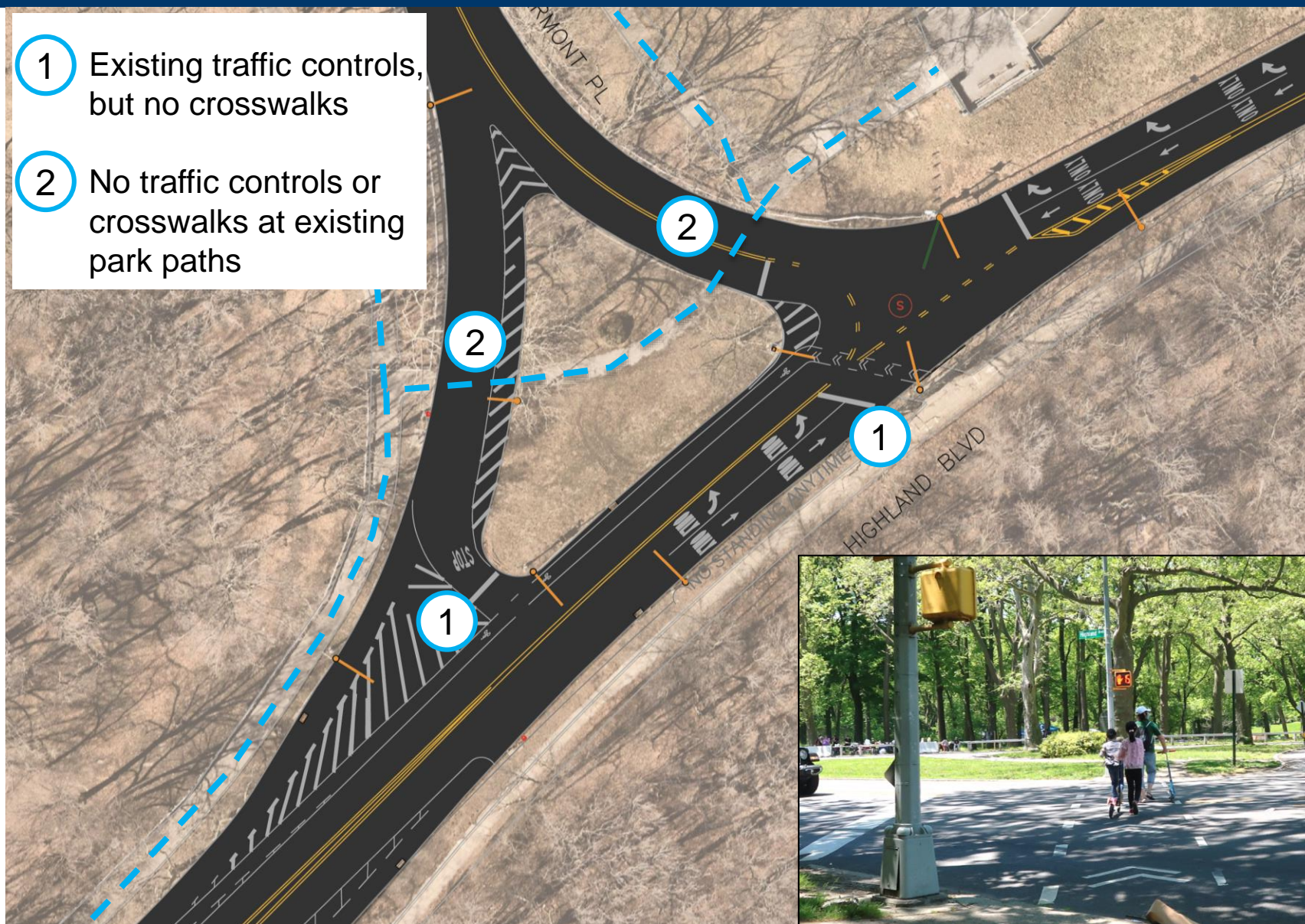


Existing Conditions

1

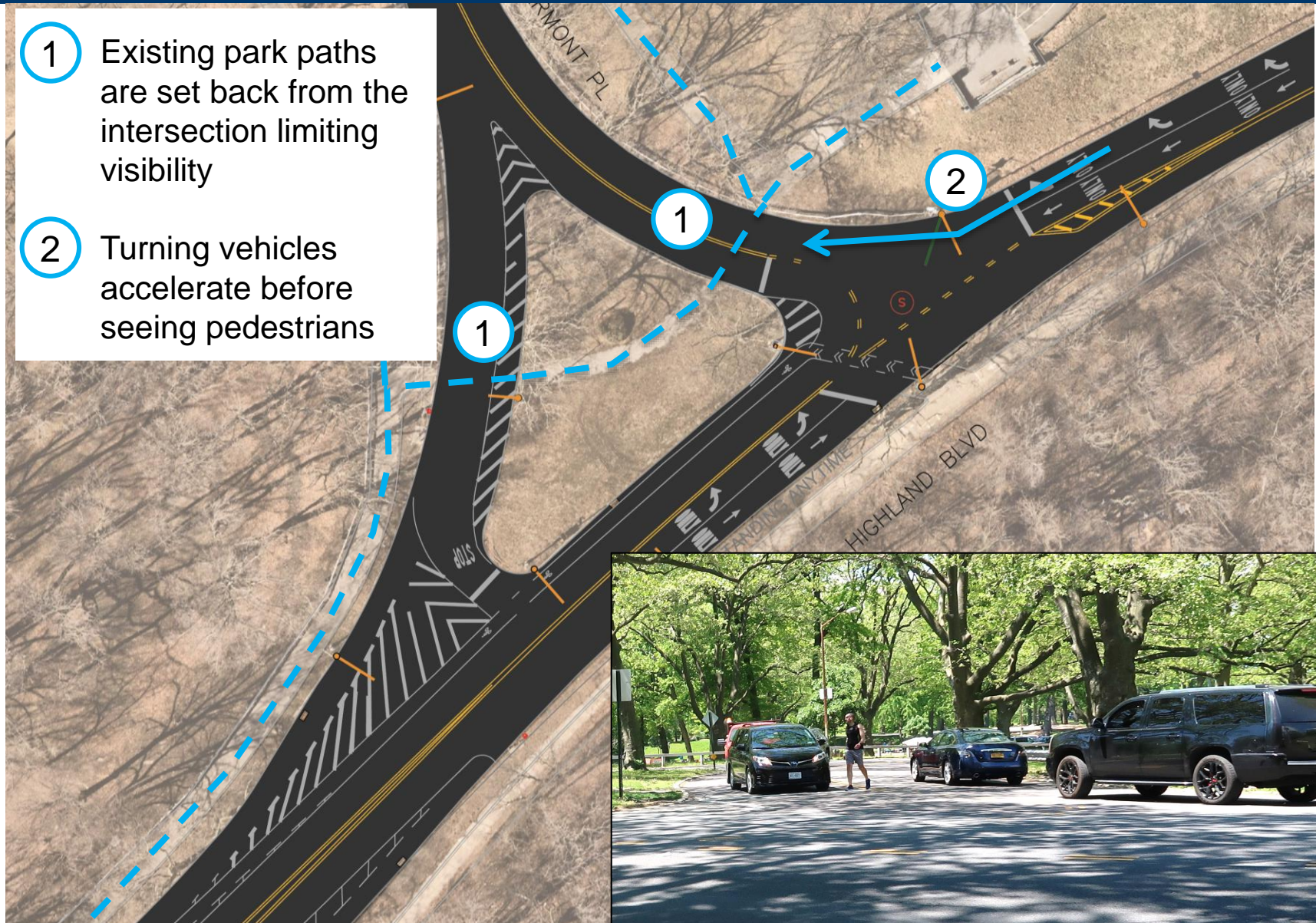
EXISTING CONDITION

- 1 Existing traffic controls, but no crosswalks
- 2 No traffic controls or crosswalks at existing park paths

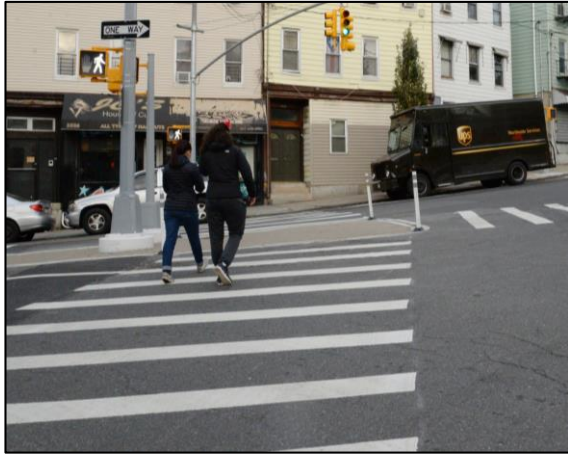


EXISTING CONDITION

- 1 Existing park paths are set back from the intersection limiting visibility
- 2 Turning vehicles accelerate before seeing pedestrians



TOOLKIT



Crosswalks



Signal Timing Adjustments



Curb Regulations and Signage



Painted Pedestrian Space with Flexible Delineators



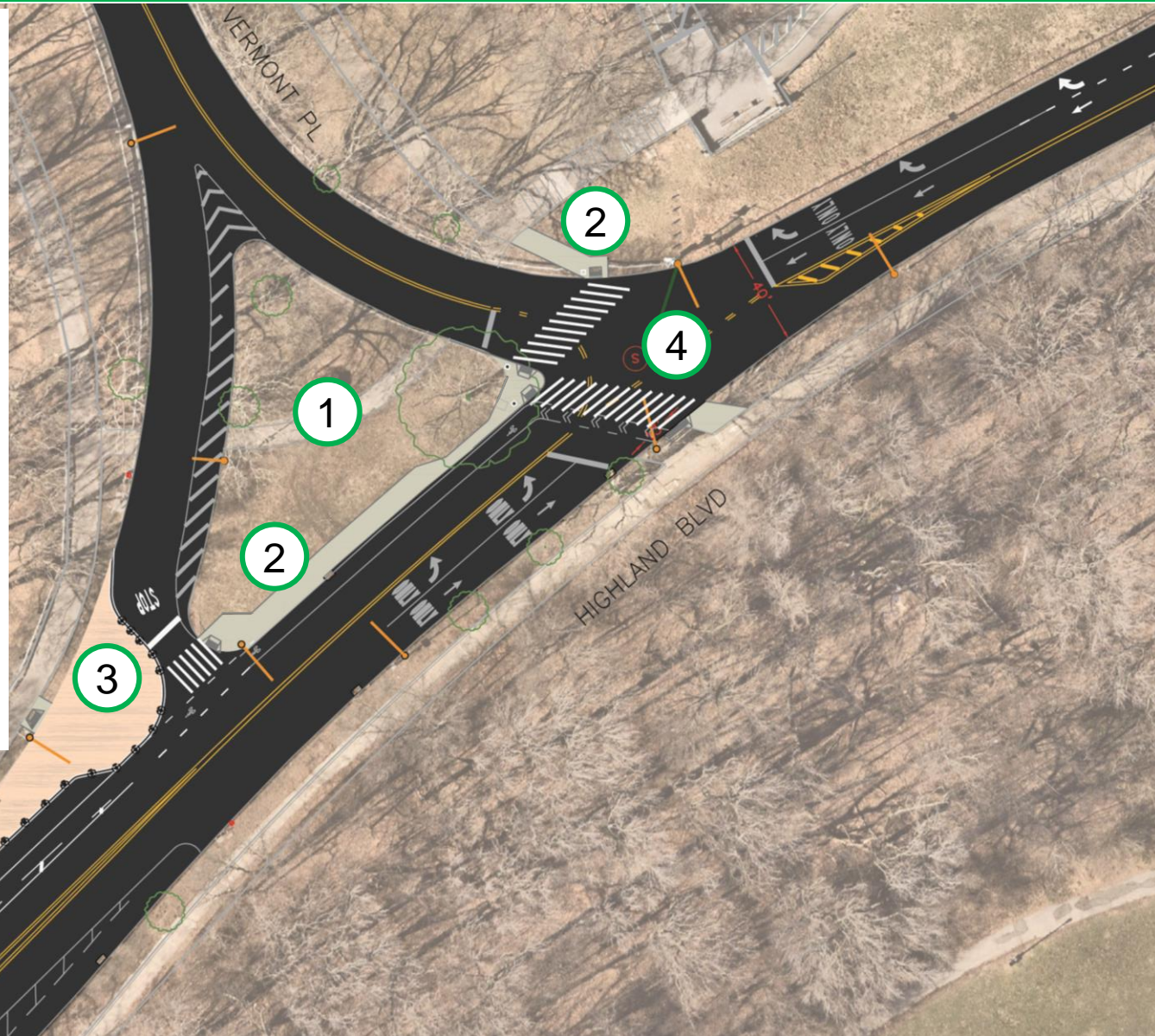
Concrete Materials

Proposed Condition

2

PROPOSED CONDITION

- 1 Remove existing path
- 2 Build concrete sidewalks
- 3 Install painted curb extension with crosswalk
- 4 Install crosswalks with signal timing changes that separate pedestrians from turning vehicles



PROPOSED SCHEDULE

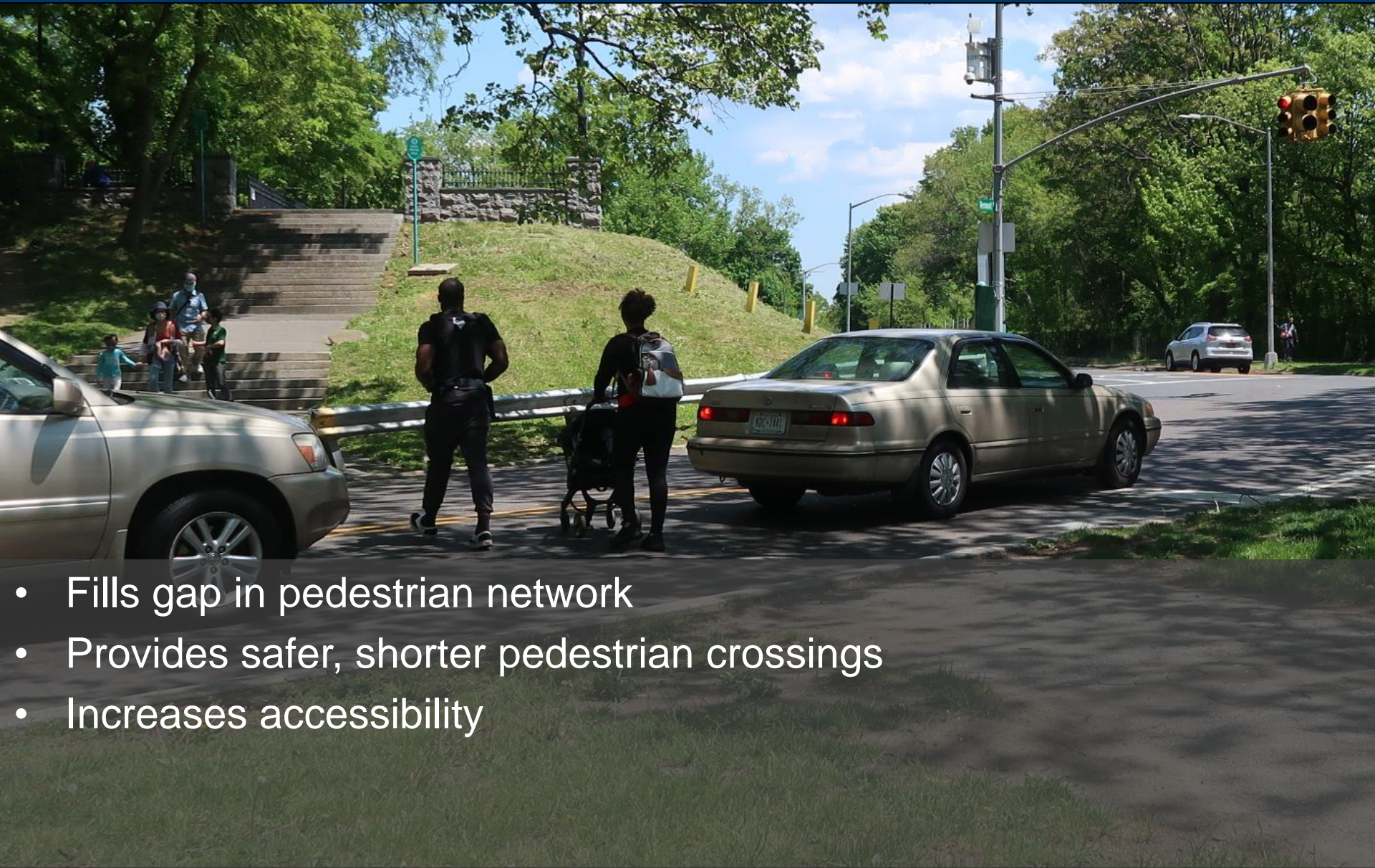
Phase 1 (Fall 2021 or Spring/Summer 2022)

- Build concrete sidewalk on triangle

Phase 2 (Spring/Summer 2022)

- Adjust signal timing and install new signal infrastructure
- Install new crosswalk at signalized intersection
- Install painted curb extension and crosswalk at stop control

BENEFITS



- Fills gap in pedestrian network
- Provides safer, shorter pedestrian crossings
- Increases accessibility

THANK YOU!

Questions?



NYC DOT



NYC DOT



nyc_dot



NYC DOT