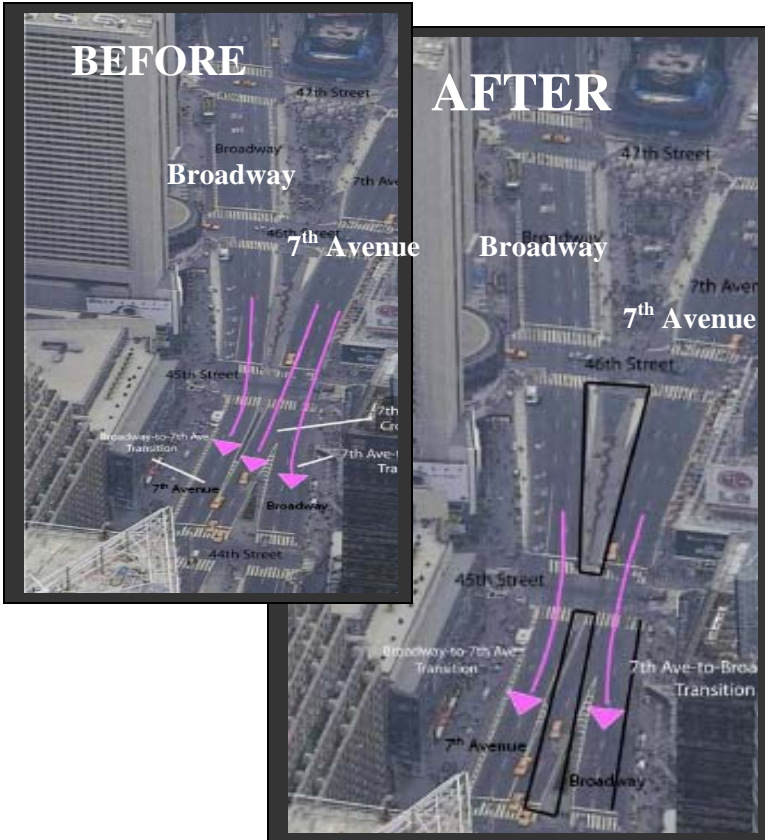


# Times Square *Shuffle*

The Department of Transportation, in association with the Times Square Alliance, is changing traffic operations in Times Square, starting **Saturday November 4<sup>th</sup>**. This change will provide expanded space for pedestrians in the vicinity of Times Square.

Currently, vehicles traveling south on Broadway *must* continue on 7<sup>th</sup> Avenue at W.45<sup>th</sup> Street. Vehicles traveling south on 7<sup>th</sup> Avenue have the *option* of continuing either on 7<sup>th</sup> Avenue or on Broadway.



- ➡ Under the Times Square Shuffle, 7<sup>th</sup> Avenue traffic must continue onto Broadway and Broadway traffic must continue onto 7<sup>th</sup> Avenue.
- ➡ Drivers on 7<sup>th</sup> Avenue north of W. 45<sup>th</sup> Street can “shuffle” west to Broadway to continue on 7<sup>th</sup> Avenue south of W. 45<sup>th</sup> Street
- ➡ Drivers on Broadway south of W. 45<sup>th</sup> Street can “shuffle” west to 7<sup>th</sup> Avenue



Traffic signs will be posted throughout Midtown to alert drivers of this change, and how to reach southbound 7<sup>th</sup> Avenue.

Prior to the traffic pattern changes, limited street closures will occur over 5 nights, starting **Monday October 30<sup>th</sup>**. DOT will monitor traffic in the period following implementation to assess impacts.

For more information please visit DOT's Website at [nyc.gov/html/dot/](http://nyc.gov/html/dot/) or call 311.



**New York City**  
Michael R. Bloomberg, Mayor



**New York City**  
**Department of Transportation**  
Iris Weinshall, Commissioner

October 2006