



Springfield Blvd, 144 Ave to 131 Ave

Queens Community Board 12 Transportation Committee

April 12, 2022

Project Location

- Springfield Blvd is a through truck route
- Q77 bus route runs along entire project limits and Q85 bus runs from N Conduit Ave to 140th Ave
- Mainly residential land use, with a large commercial development south of Merrick Blvd
- Springfield Gardens High School, Success Academy Queens Middle School, PS 132, Cynthia Jenkins High School, Merrick Academy, and Tri-Community JHS 231 located on the corridor
- Montbellier Park Playground located between 139th St and Eastgate Plaza
- Project area corridor length is 1.2 miles



Safety Data

Injury Summary, 2015-2019 (5 Years)

	Total Injuries	Severe Injuries	Fatalities	KSI
Pedestrian	40	5	0	5
Bicyclist	7	0	0	0
Motor Vehicle Occupant	250	10	0	10
	0	0	0	0
Total	297	15	0	15

Source: Fatalities: NYCDOT, Injuries: NYSDOT KSI: Persons Killed or Severely Injured

- 297 people have been injured along this corridor, including 15 severely injured (2015-2019 crash data)
- 12.4 severe injuries per mile and 4 pedestrian severe injuries per mile
- 23% of pedestrian crashes are related to pedestrians crossing with the signal
- Over 33% of motor vehicle crashes on this corridor are rear-end crashes, indicative of speeding

Total Injuries
2015 - 2019

Severe Injuries
& Fatalities
2015 - 2019



Map does not show total or severe injuries that occurred at midblock locations. Map only includes intersections with 10+ injuries. Data is based off of NYDDOT/NYS DMV crash and injury data available as of 1/2022.

Existing Conditions

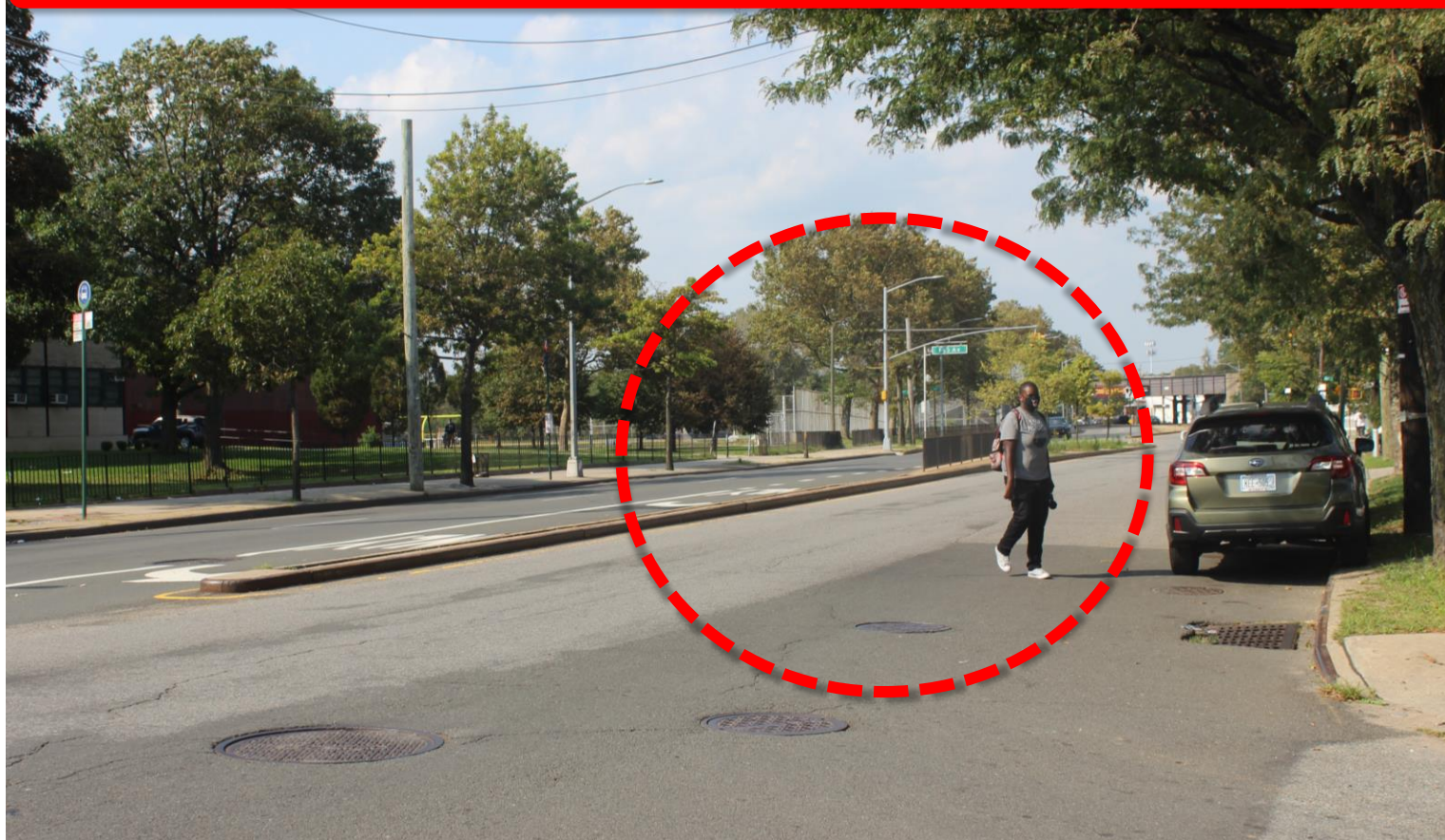
Lack of Pedestrian Refuges + Long Crossing Distances



Springfield Blvd and Merrick Blvd

Existing Conditions Continued

Lack of Clear Markings + Wide, Open Roadway



Springfield Blvd and 132 Rd

Proposed Safety Improvements

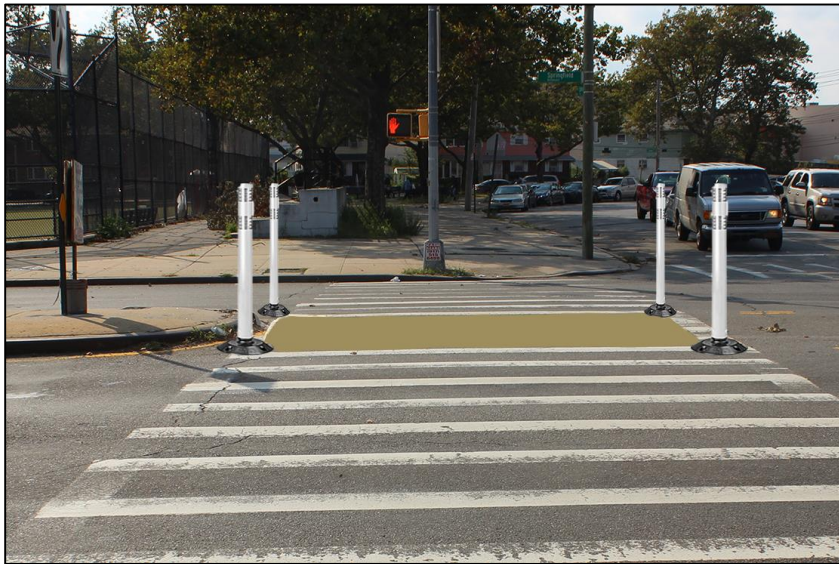
- Add 16 painted median tip extensions at 9 locations
- Add painted curb extension at SW corner of Springfield Blvd and Eastgate Plaza
- Expand channelized space adjacent to median and add parking lane stripe where feasible to create standard width moving lanes
- Add left turn traffic calming treatment at 135 Ave for left turns from WB 135 Ave to SB Springfield Blvd



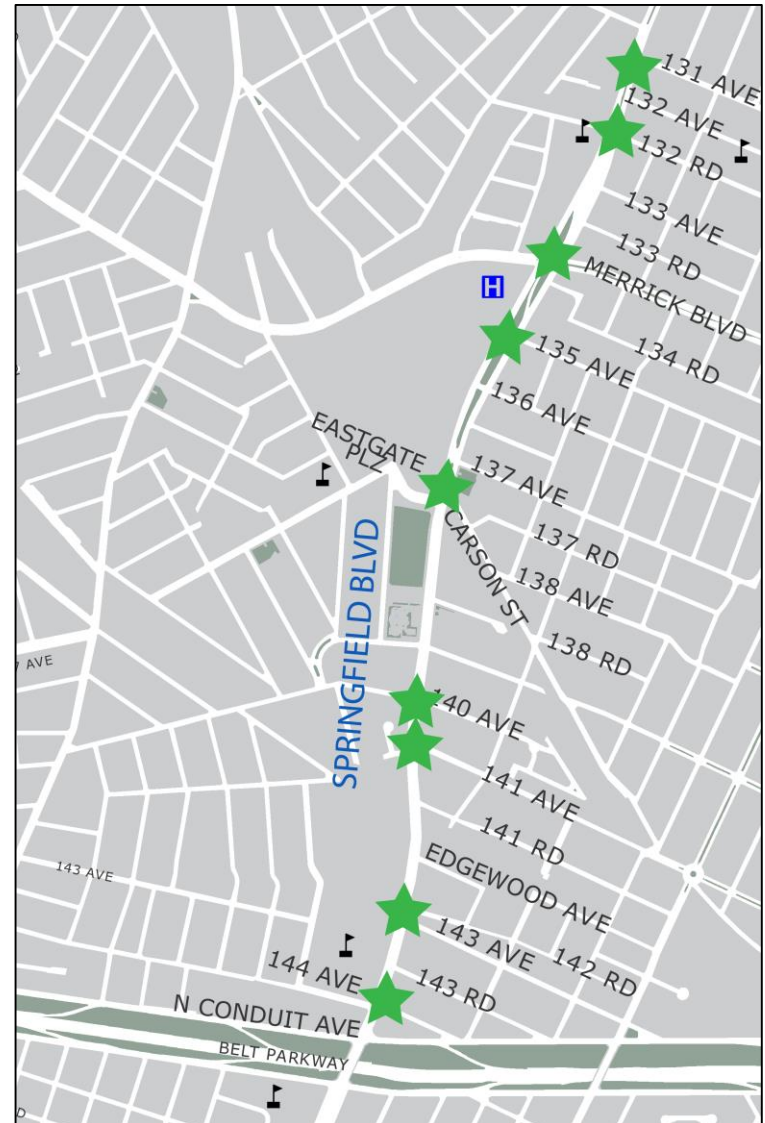
Example: Merrick Blvd and 233 St

Proposed Safety Improvements: Painted Median Tip Extensions

- Extended medians give pedestrians a safe place to wait and encourage slower/safer vehicle turns
- Vertical, reflective delineators improve visibility

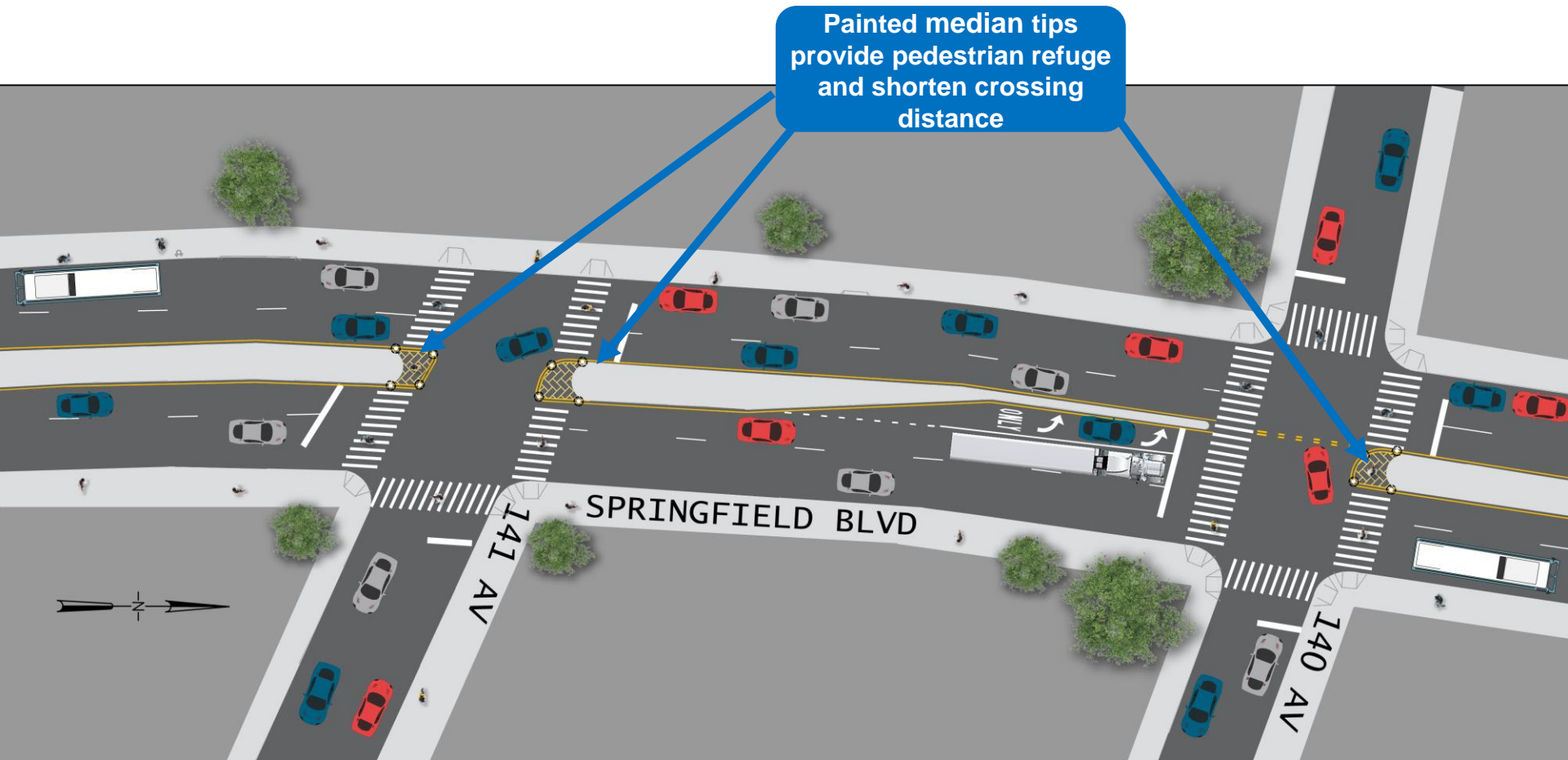


Proposed: Springfield Blvd and Eastgate Plaza

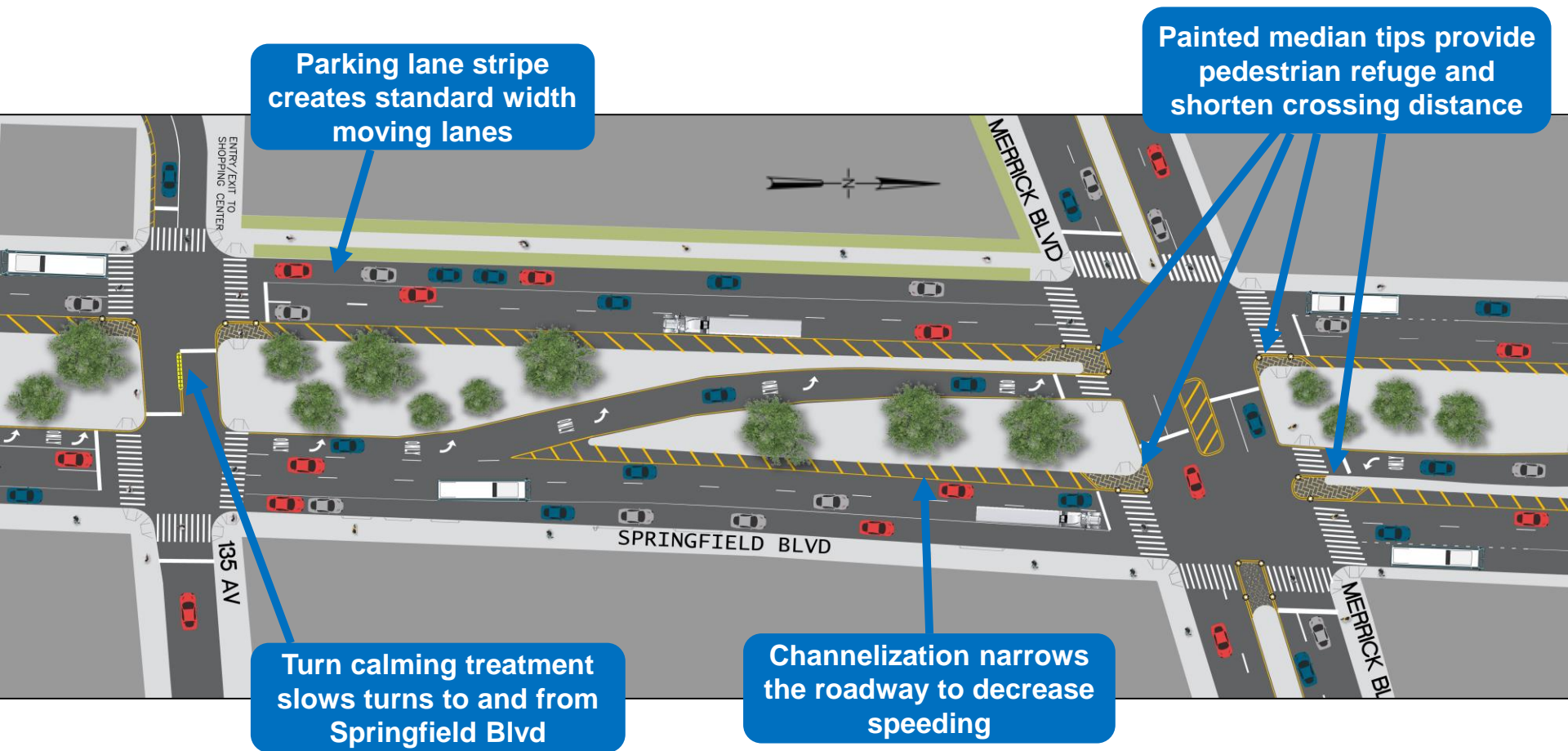


= proposed median tip location

Proposed Safety Improvements: 141 Ave to 140 Ave



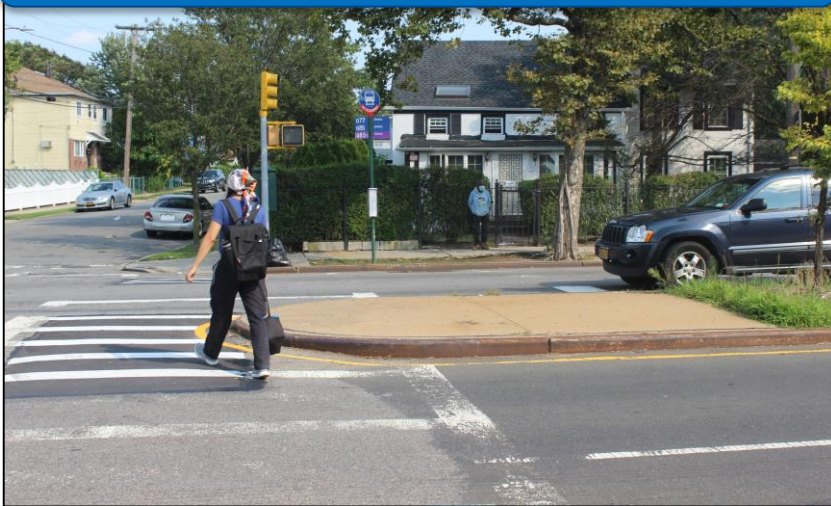
Proposed Safety Improvements: 135 Ave to Merrick Blvd



Project Benefits

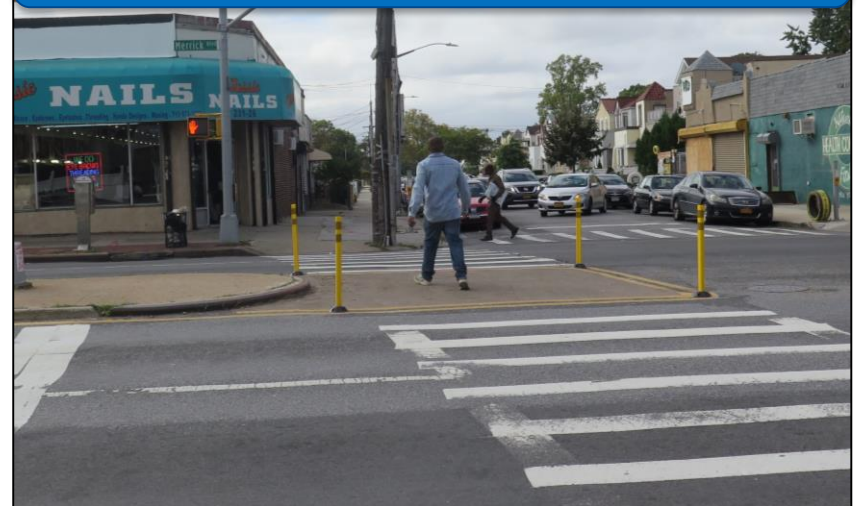
- Median tips shorten crossing distance for pedestrians and provide a safe place to wait
- Extended medians encourage slower, safer left and right turns
- Upgraded markings with reduced lane widths clarify vehicle movements and discourage speeding

Existing



Springfield Blvd and 143rd Ave

Proposed



Merrick Blvd and 231st St

Thank You!



NYCDOT



nyc_dot



nyc_dot



NYCDOT