



Spofford Ave and Coster St

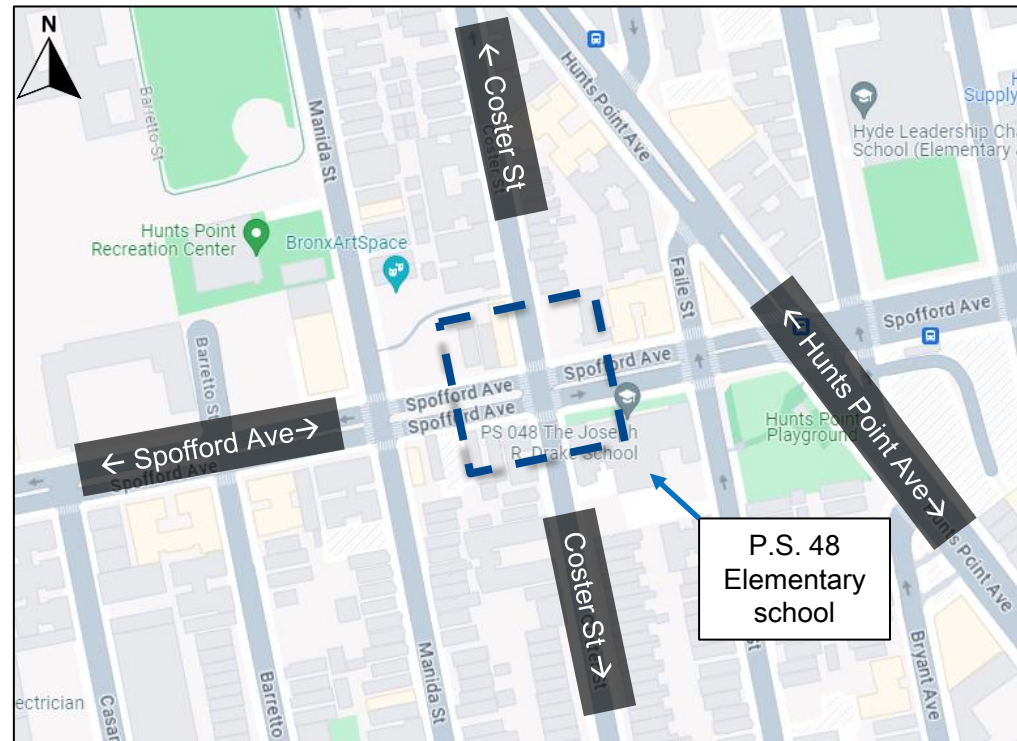
Intersection Safety Improvements

Bronx Community Board 2



Project Location

- P.S. 48 The Joseph R. Drake elementary school on SE corner
- Mainly industrial land use with some commercial and residential land use
- Safety improvements requested from school staff, residents, and the DOT Bronx Borough Commissioner's Office
- Spofford Ave is in Hunts Point Industrial Business Zone
- Located within a NYC DOT Tier 1 Priority Investment Area



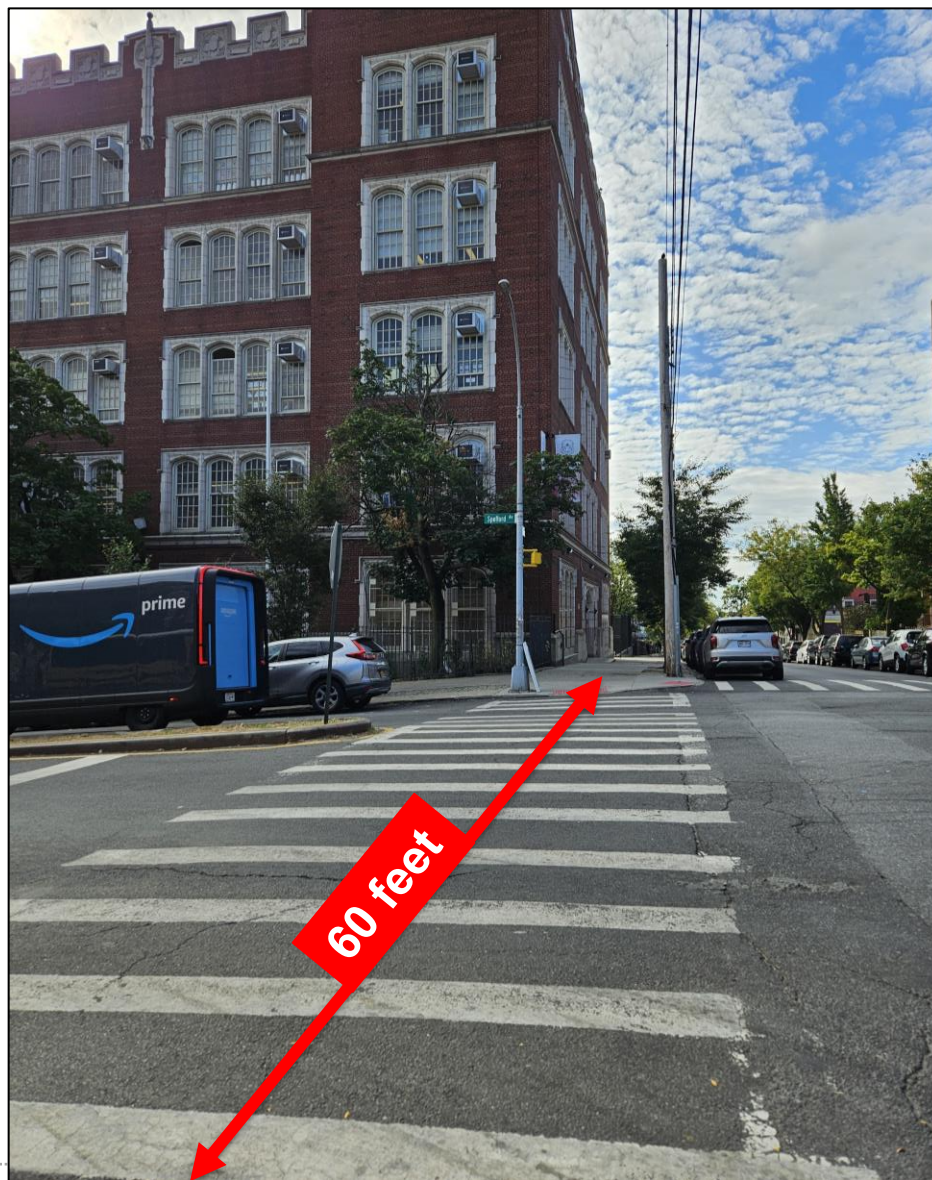
 = project limits

Project Background

- 2024 safety project on Spofford Ave from Longwood Ave to Hunts Point Ave
 - Painted median tip added on west leg of Spofford Ave at Coster St
- Hunts Point Ave Capital Project
 - Lafayette Ave to East Bay Ave: building out safety improvements in concrete that were previously implemented in paint
- Signal approved at this intersection
- 3 injuries at this intersection from 2020-2024 (all pedestrian)



Existing Conditions: Long Crossing Distances

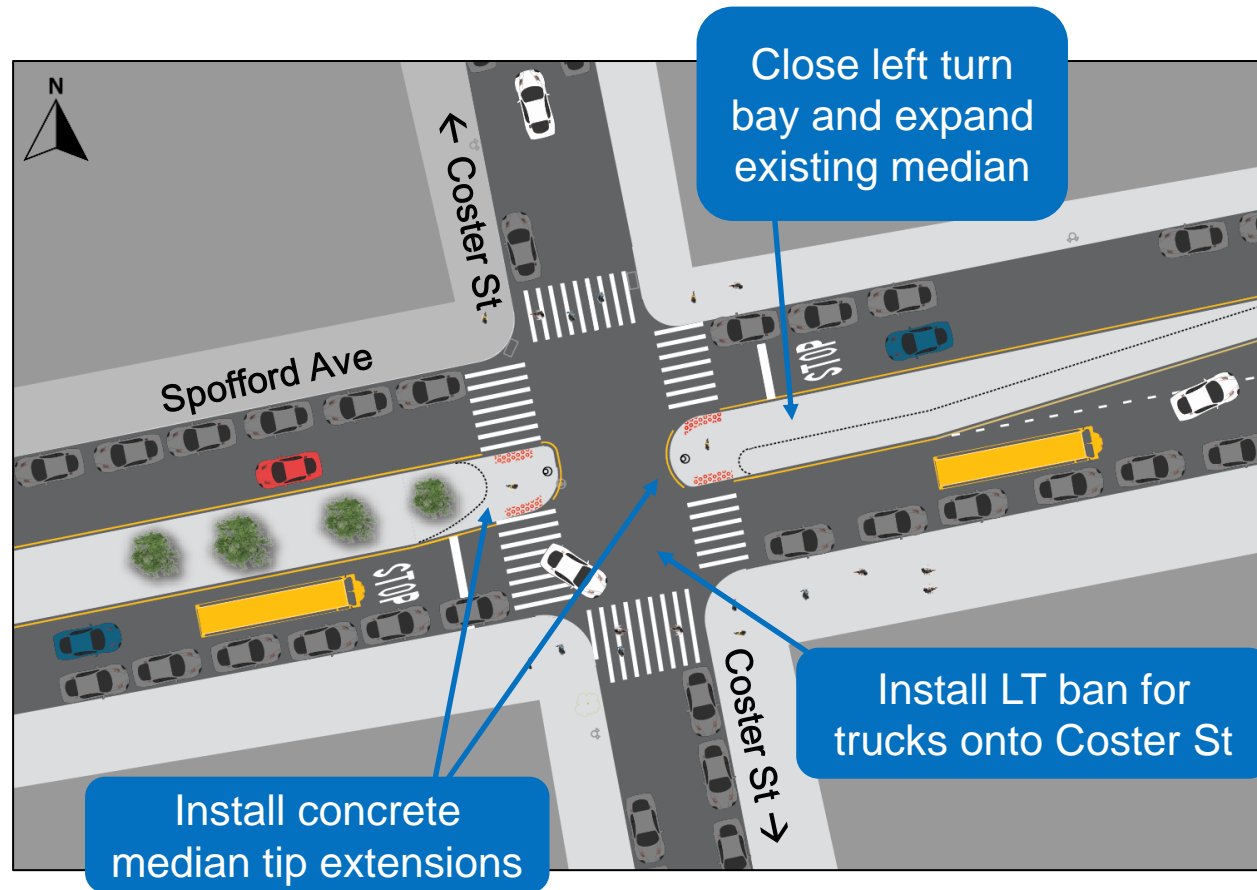


Existing Conditions: Illegal Parking in Left Turn Bay



Proposed Safety Improvements

- Install concrete median tip extensions on both medians on Spofford Ave
- Close left turn bay on East leg of Spofford Ave and fill in with concrete
- Install left turn ban for trucks onto Coster St
- Signal will be added to create a conflict-free crossing on Spofford Avenue (as resources permit)



Truck left turns onto Coster St at peak hours:

- AM: 1
- PM: 1

Project Benefits

Concrete median tip extensions will:

- Create shorter, safer pedestrian crossings
- Give pedestrians a safe place to wait when crossing Spofford Ave
- Increase pedestrian visibility
- Encourage slower, safer vehicle turns
- Simplify vehicle turns and discourage illegal parking

Future traffic signal will create conflict-free crossings



Thank You!



NYCDOT



nyc_dot



nyc_dot



NYCDOT