



SOUTH WILLIAMSBURG

School Safety Improvements

Community Board 1 May 8th, 2017



VISION ZERO PRIORITY

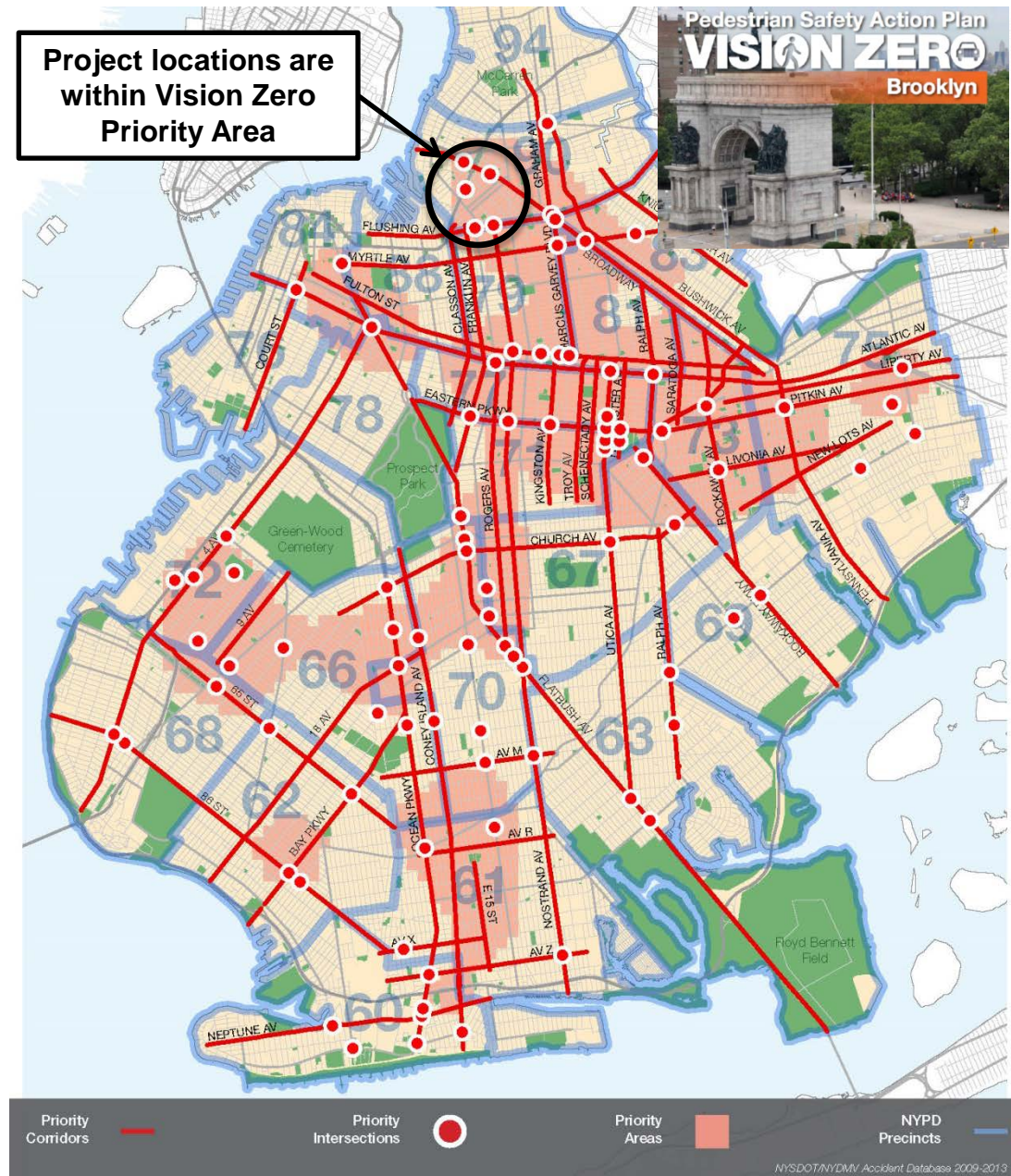
Brooklyn Priority Geographies

Vision Zero

- Multi-agency effort to reduce traffic fatalities in NYC
- Borough Action Plans released in 2015
- Priority Intersections, Corridors, and Areas identified for each borough

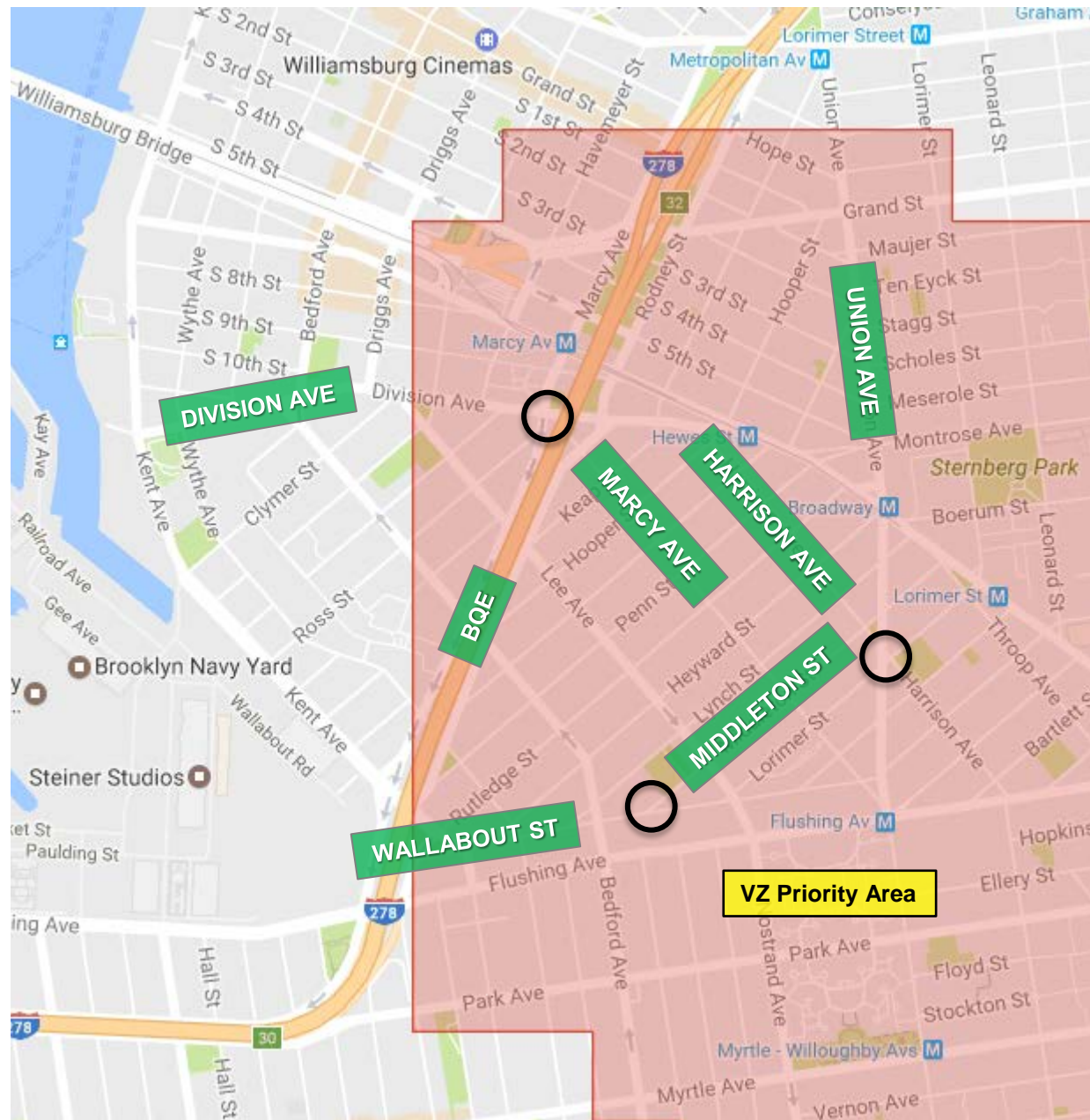
South Williamsburg

- Priority Area



PROJECT LOCATION

- South Williamsburg
 - Union Ave / Lorimer St / Harrison Ave
 - Wallabout St and Middleton St
 - Marcy Ave and Division Ave
- Project area used by students accessing PS 380, Beth Chana School, IS 318, and many other neighborhood schools



EXISTING CONDITIONS: UNION AVE / LORIMER ST / HARRISON AVE



MISSING CROSSWALKS

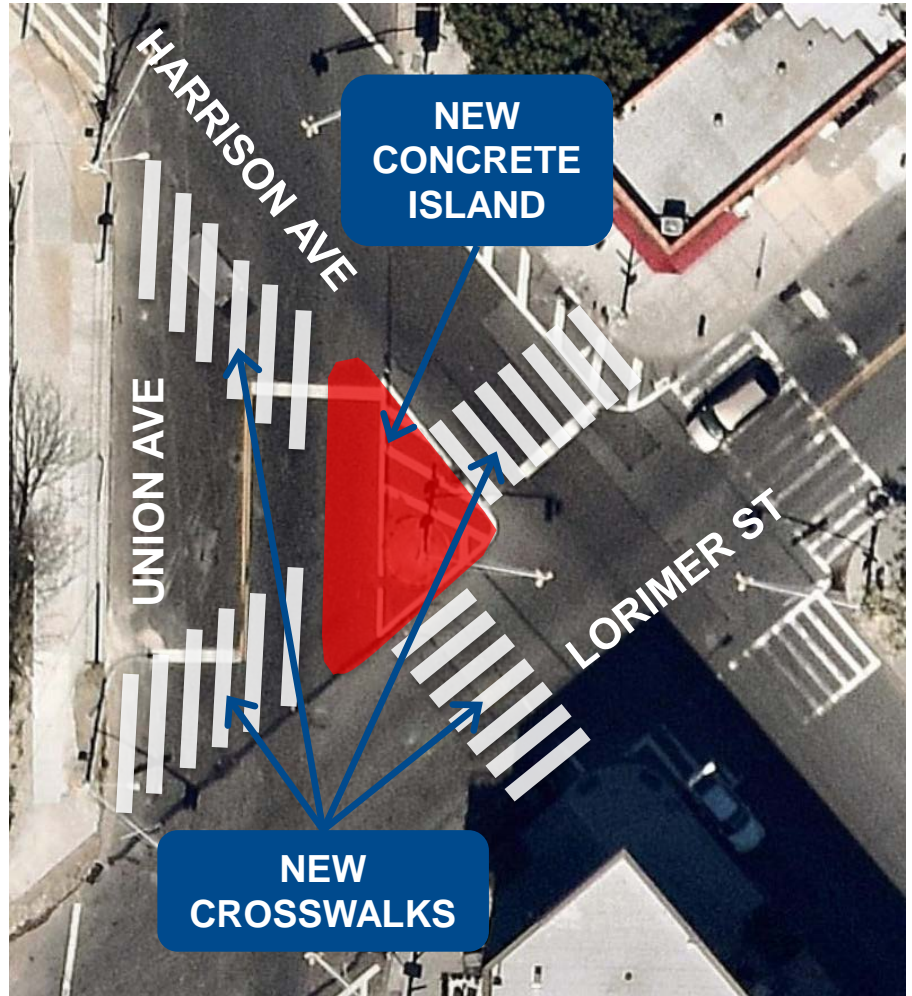
**LONG CROSSING
DISTANCES**

Union Ave and Harrison Ave, facing east

PROPOSAL: CONCRETE ISLAND AND NEW CROSSWALKS AT UNION / LORIMER / HARRISON



Existing: Union Ave / Lorimer St / Harrison Ave



Proposed: Union Ave / Lorimer St / Harrison Ave

EXAMPLE: CONCRETE ISLAND & NEW CROSSWALKS



Example: Jefferson Ave and Broadway, looking east

EXISTING CONDITIONS: WALLABOUT ST & MIDDLETON ST

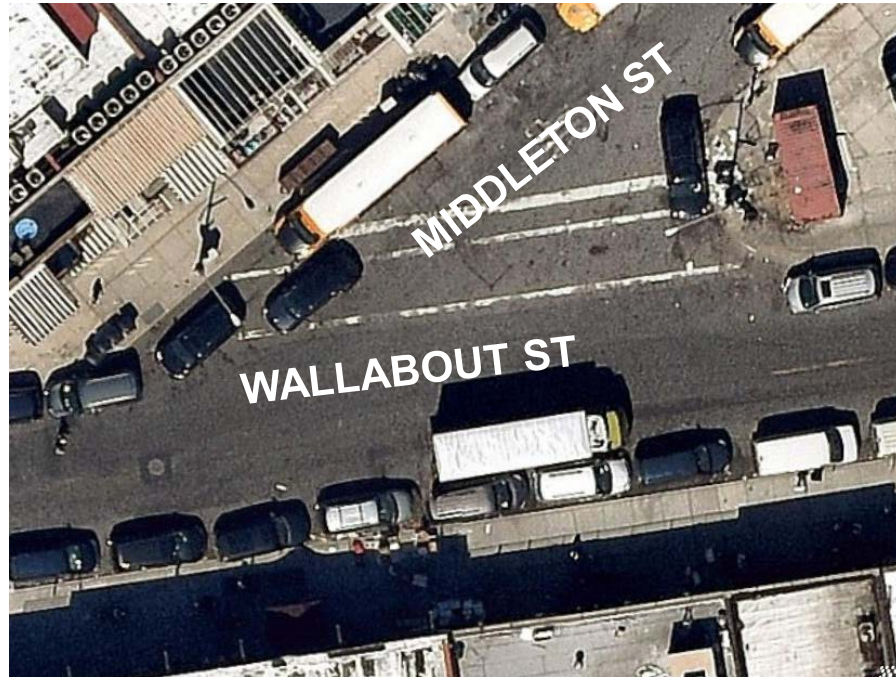


**POOR PEDESTRIAN
VISIBILITY**

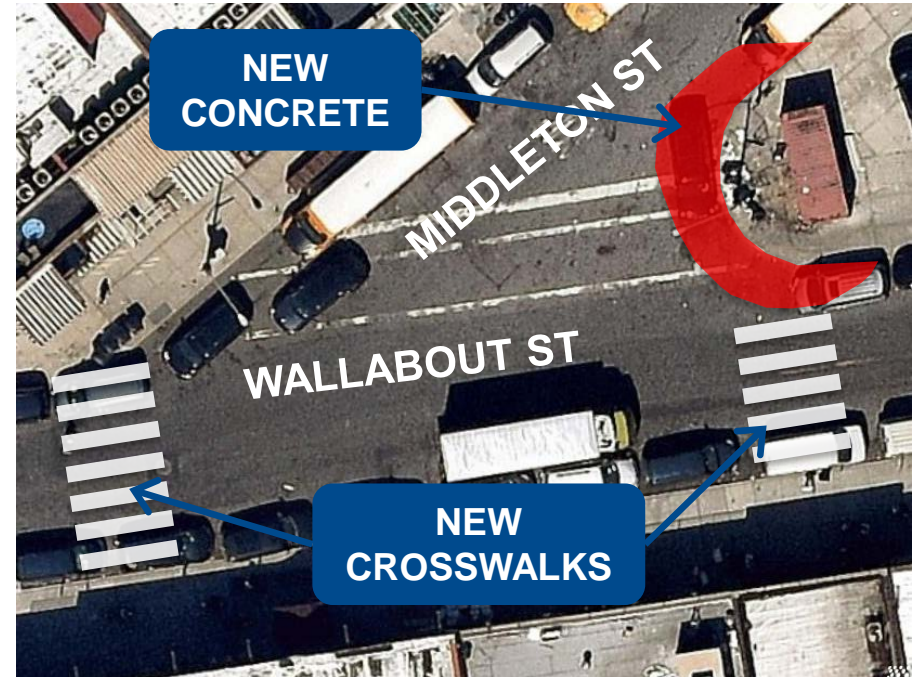
**LONG DISTANCE BETWEEN
CROSSINGS**

Wallabout St at Middleton St, facing east

PROPOSAL: CURB EXTENSION AND ENHANCED CROSSINGS AT WALLABOUT ST & MIDDLETON ST



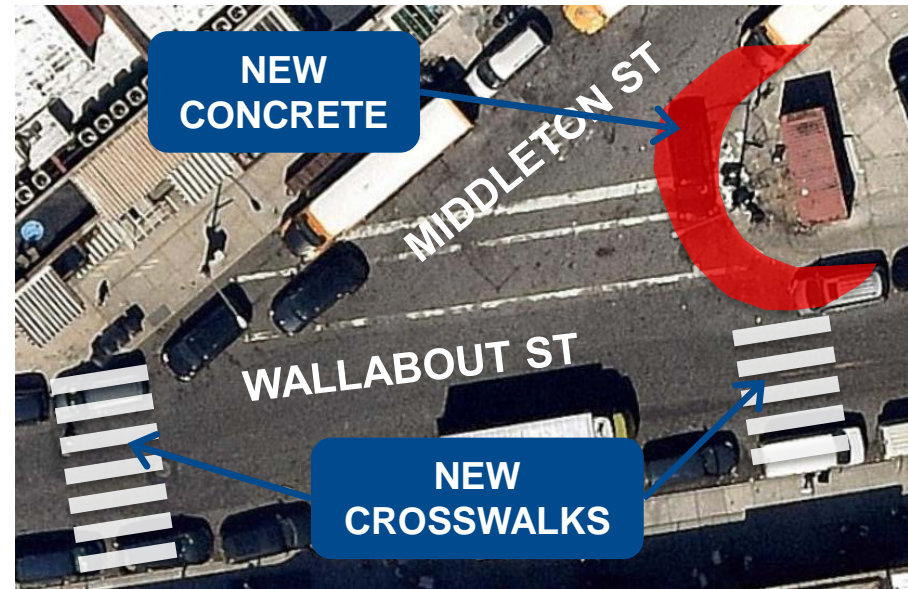
Existing: Wallabout St and Middleton St



Proposed: Wallabout St and Middleton St

ENHANCED CROSSINGS AT MIDDLETON ST & WALLABOUT ST

- Wallabout St and Middleton St does not currently meet federal guidelines for a new stop sign or traffic signal
- In order to create a safer crossing we are installing enhanced crossings across Wallabout St
- The crossings will include:
 - High visibility crosswalks
 - New curb extension on the northeast corner of the intersection
 - New ADA compliant pedestrian ramps
 - Pedestrian warning signs



Proposed: Wallabout St and Middleton St



Example: Maspeth Ave

EXISTING CONDITIONS: MARCY AVE & DIVISION AVE



MISSING CROSSWALK

**CHAOTIC TRAFFIC
MOVEMENTS**

Marcy Ave and Division Ave, facing northeast

PROPOSAL: MARCY AVE & DIVISION AVE



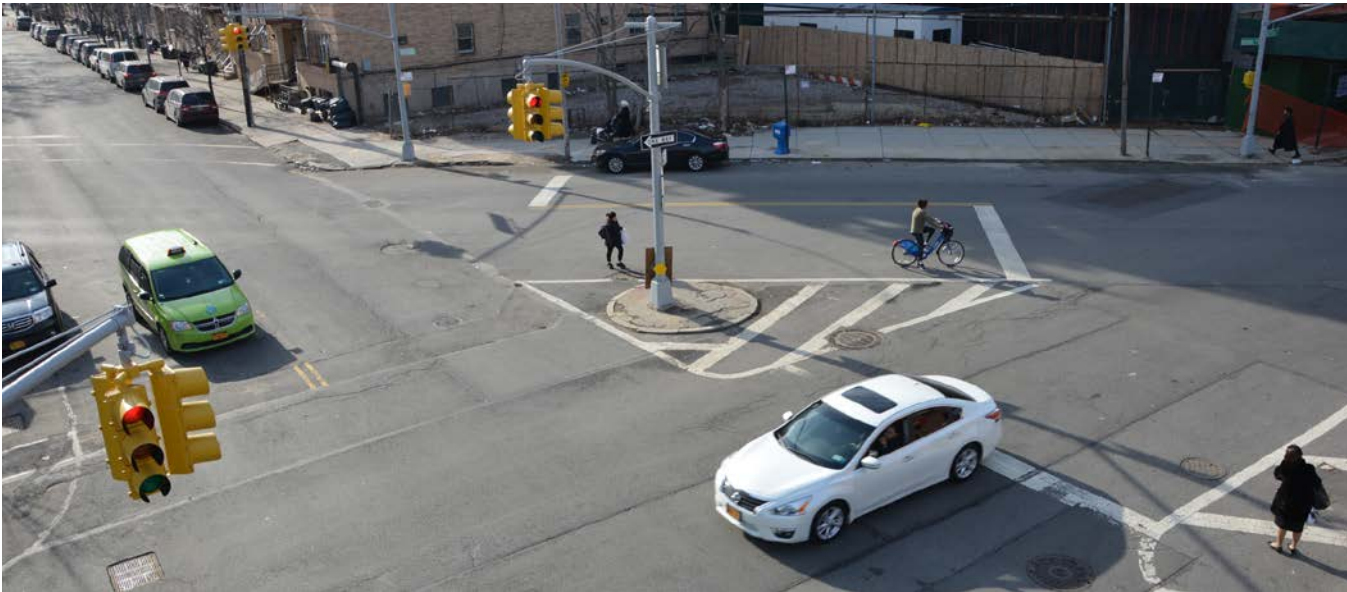
Existing: Marcy Ave and Division Ave



Proposed: Marcy Ave and Division Ave

BENEFITS OF PROPOSAL

- Improves pedestrian safety at intersections heavily used by students
- Adds pedestrian refuge area
- Provides missing crosswalks and shortens existing crosswalks
- Simplifies complex intersections
- Reduces speeding / calms traffic
- Simpler, safer turns



Union Ave / Lorimer Ave / Harrison Ave

THANK YOU!

Questions?



Contact: Brooklyn Borough Commissioner's Office at (646) 892 1350



NYC DOT



NYC DOT



nyc_dot



NYC DOT