

WELCOME

Shore Road Bridge over the Hutchinson River

PROJECT SCOPING MEETING

DATE: August 3, 2021 • **TIME:** 4 pm and 7 pm

LOCATION: Virtual Meeting



Comment during today's meeting:

Typed Comments: Submit your comments using the Microsoft Teams "chat" function

Verbal Comments: Comments can also be submitted verbally using the "raise hand" function after the presentation



Mail comments to NYCDOT:

New York City Department of Transportation
Division of Bridges
Shore Road Bridge Project Team
Attention: Joannene Kidder
55 Water Street, 5th Floor
New York, NY 10041



Submit comments by email:

ShoreRoadBridgeBX@dot.nyc.gov



SHORE ROAD BRIDGE OVER THE HUTCHINSON RIVER

PIN X773.63



Project Limits



What Is Scoping?

- Scoping is a process for determining the scope of issues to be addressed in the Environmental Impact Statement (EIS), and for identifying the significant issues related to the proposed action
- Provides early opportunity for the Joint Lead Agencies to distribute information and to receive input from agencies and the public

PUBLIC SCOPING MEETING

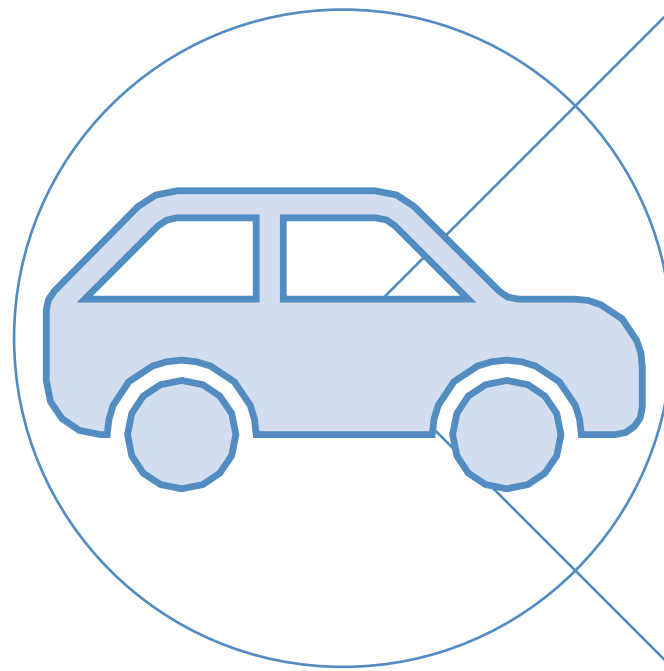
- Provides an early opportunity to engage the public under the National Environmental Policy Act EIS process
- The Joint Lead Agencies are seeking public and agency input on issues of concern, potential impacts, and the concepts under consideration



Project Needs



Address structural deficiencies



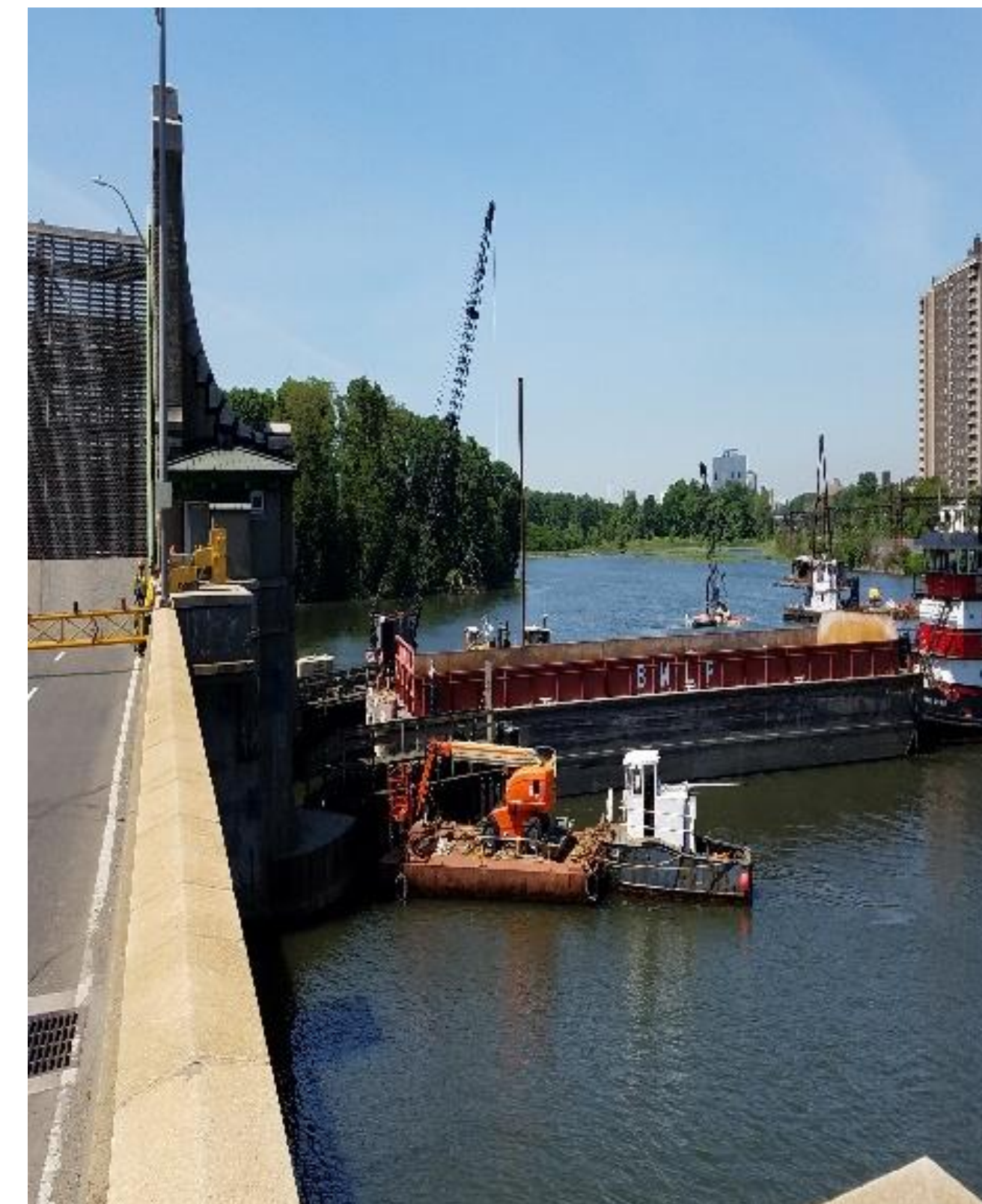
Address geometric deficiencies



Improve vehicular and marine traffic operations and the operational reliability of the bridge



Improve pedestrian and bicycle accommodations



Project Purpose and Objectives

The purpose of the Project is to address the structural deficiencies; geometric deficiencies; and operational reliability; for multi-modal users, including marine vessels, of the Shore Road Bridge over the Hutchinson River.

The Project objectives are to:

- Address the identified structural, geometric and operational deficiencies of the crossing;
- Address operational constraints associated with the passage of marine vessels under the bridge; and
- Improve bicycle/pedestrian facilities on the Shore Road Bridge.



National Environmental Policy Act

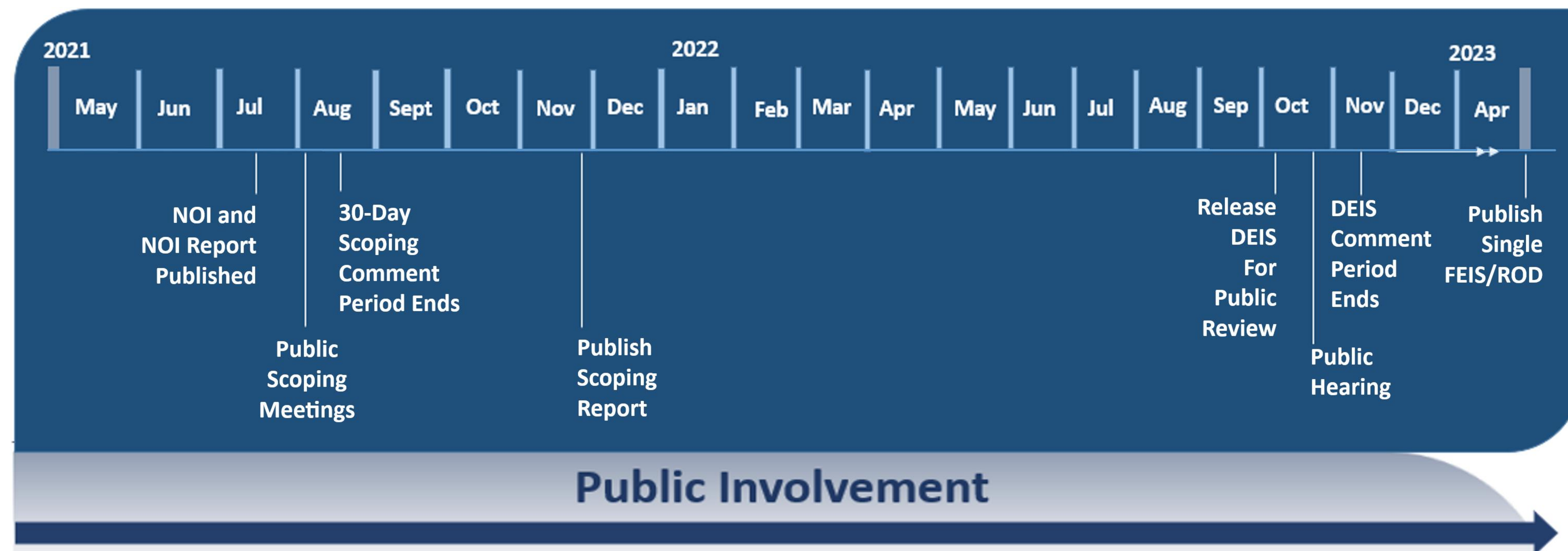
NEPA, also known as the National Environmental Policy Act, is a federal law that provides for a decision-making process to consider the effects of federally funded or permitted projects on the natural and built environment.

NEPA provides for broad participation in decision-making by the public and those agencies having an interest related to the action. The lead agencies are required to provide opportunities for meaningful public and agency participation during the environmental process.

Under NEPA, lead agencies consider public input about the potential effects of a project on the social, economic, and environmental conditions. Lead agencies are required to consider agency and public comments received.



NEPA Environmental Review Process



The Joint Lead Agencies will:

- Prepare an Environmental Impact Statement (EIS)
- Assess potential effects of the feasible build alternative(s) and develop avoidance, minimization, and/or mitigation measures for adverse effects
- Provide meaningful opportunities for public participation during the environmental process

ACRONYMS:

Draft Environmental Impact Statement (DEIS),
Final Environmental Impact Statement (FEIS),
Notice of Intent (NOI), Record of Decision (ROD)

Social, Economic & Environmental Considerations

The EIS will include an assessment of social, economic and environmental effects resulting from the proposed action.

Key Topics/Resources include the following:

- Parkland and recreational resources;
- Cultural and historic resources;
- Surface waters, navigable waters, and wetlands;
- General Ecology, Wildlife Resources, Endangered and Threatened Species;
- Coastal zone resources;
- Construction; and
- Environmental Justice.

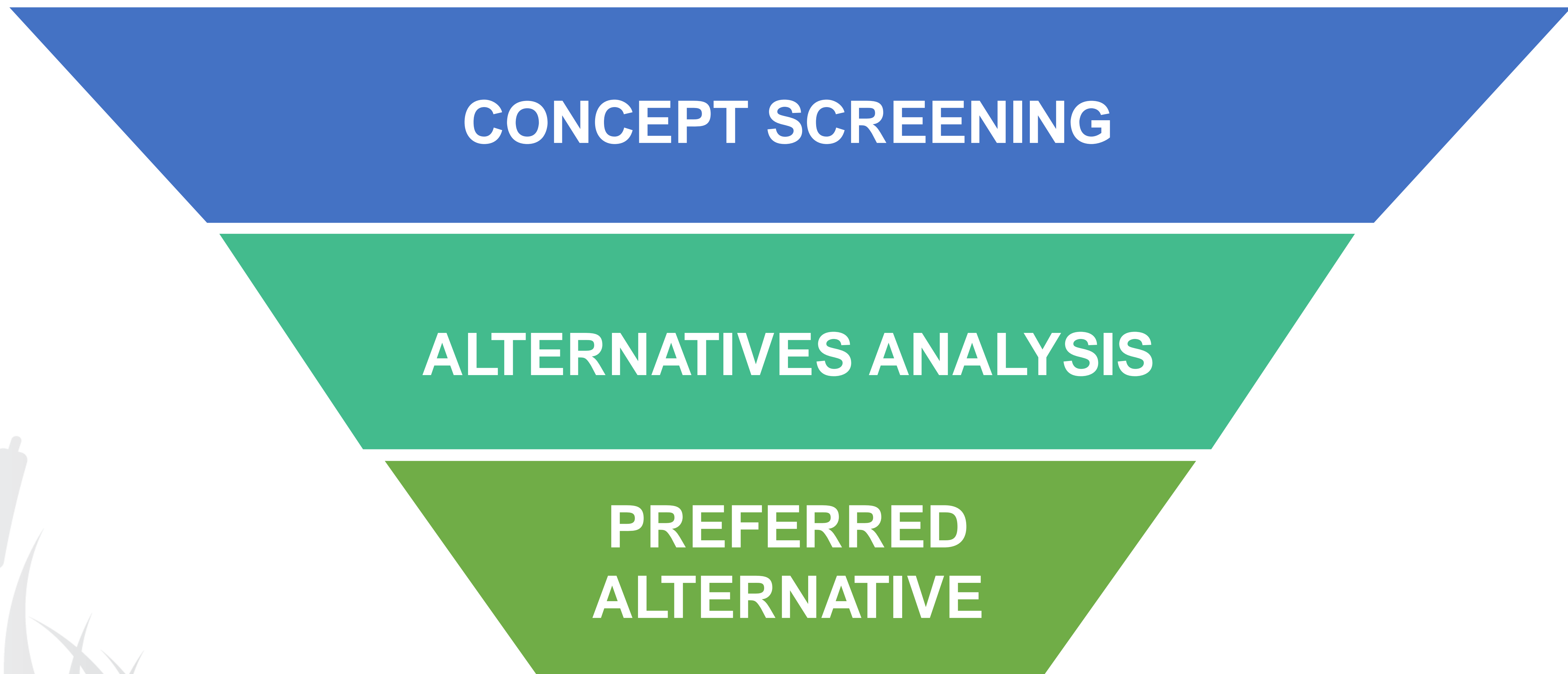
Additional Resource Topics to be Examined:

- Land use;
- Visual resources;
- Hazardous waste and contaminated materials;
- Traffic;
- Noise;
- Air quality;
- Economic considerations; and
- Social considerations.



Concept Screening / Alternatives Analysis

The reasonable range of alternatives for the project will be identified during the scoping process and presented in the Draft Environmental Impact Statement.



Concept Screening / Alternatives Analysis

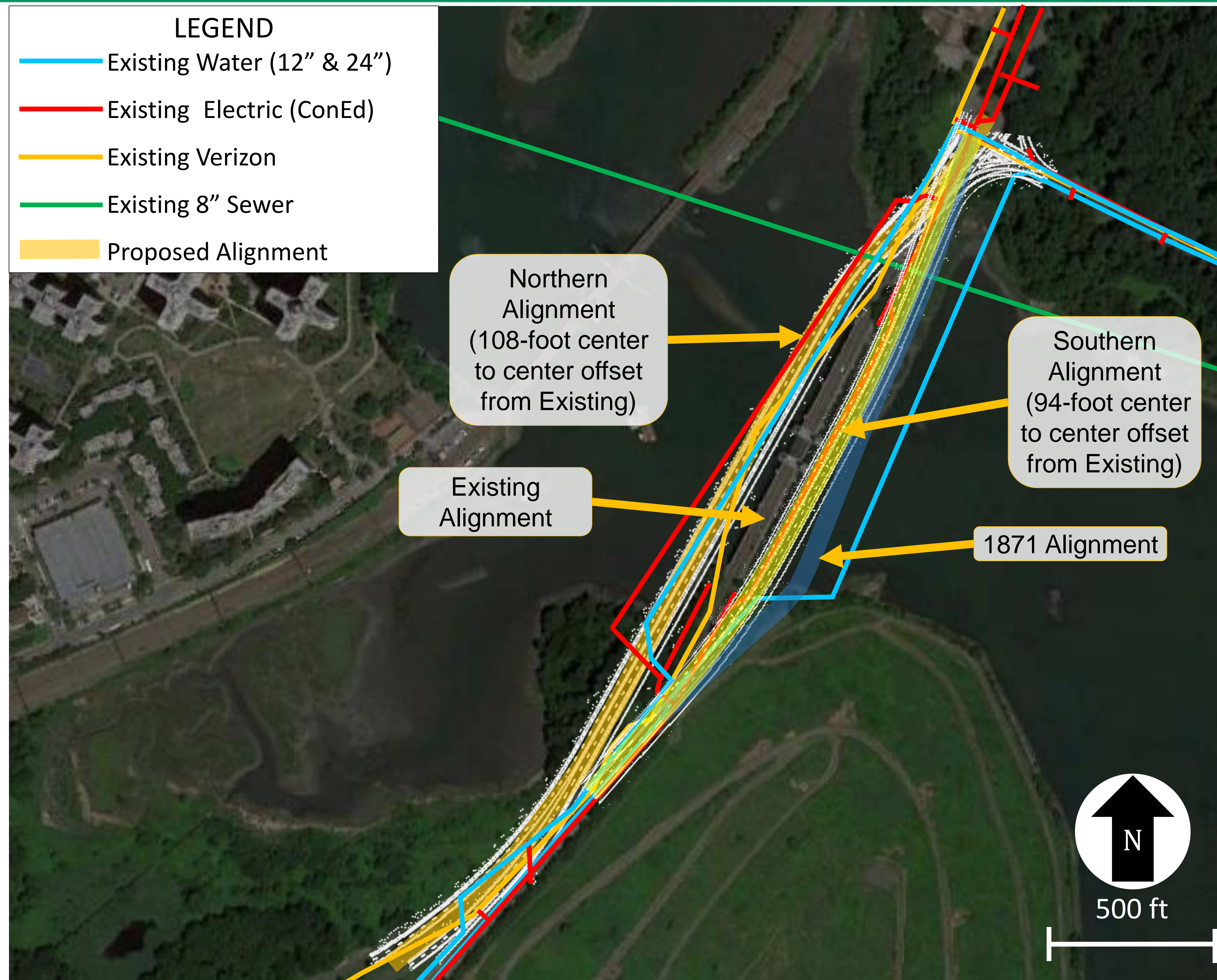
No Build Alternative

- The National Environmental Policy Act requires the analysis of a No Build Alternative
- Serves as the baseline against which the build alternatives are compared
- Retains the Shore Road Bridge and approaches in their existing configuration
- Assumes no improvements (beyond maintenance/repairs) as part of this project



Concept Screening / Alternatives Analysis

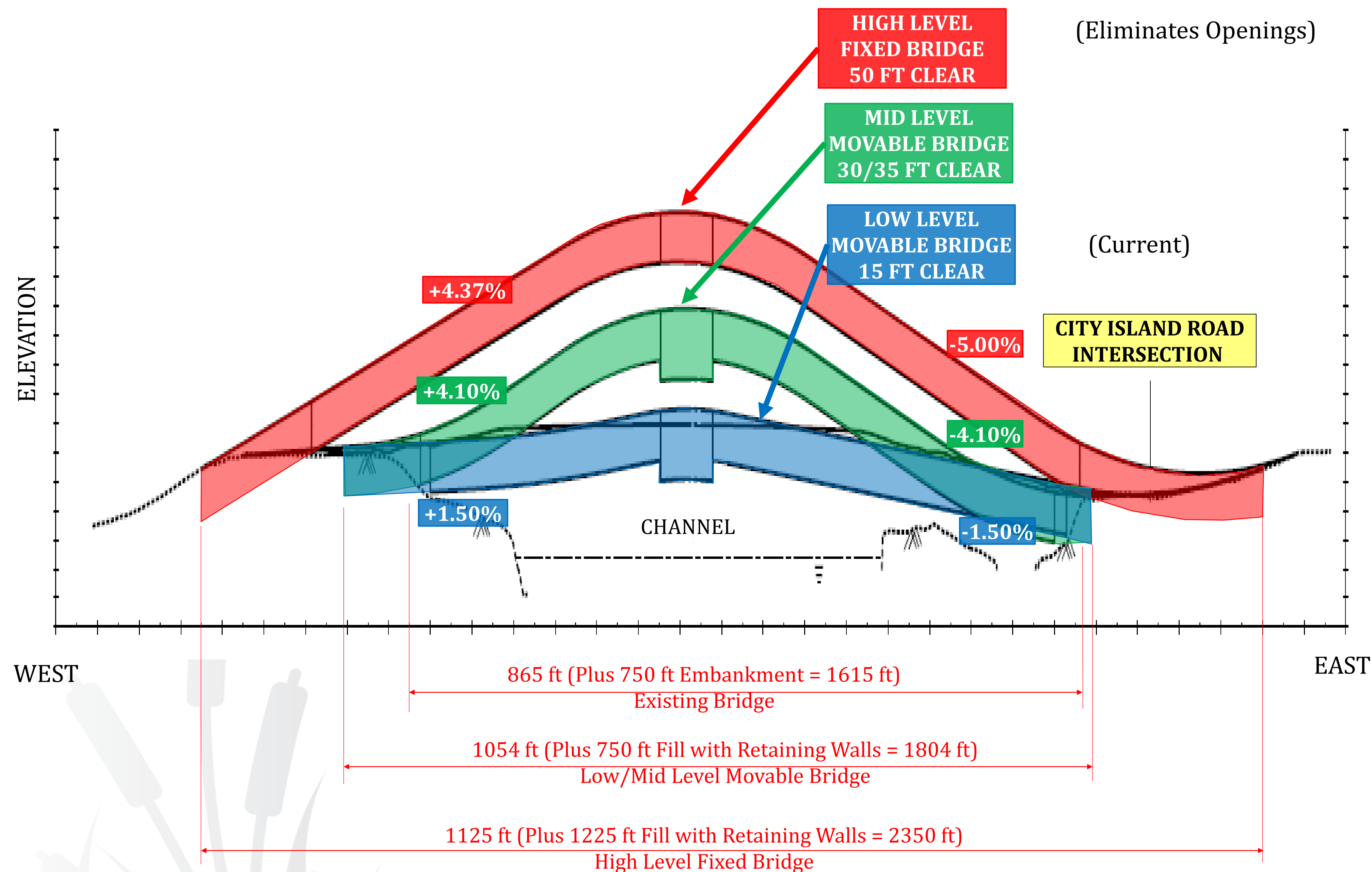
Bridge Alignments (Path of Bridge)



- An offline structure would be located parallel to the existing bridge and span a wider part of the navigational channel providing a wider opening between the fenders for navigation.
- An offline structure allows traffic to be maintained on the existing bridge during construction.
- The southern alignment overlaps fewer utilities.
- All three alignments can accommodate either a High, Mid, or Low-Level Bridge profile.

Concept Screening / Alternatives Analysis

Vertical Profiles (Height of Bridge)



- All three profiles can be placed on any of the alignments.
- The Mid and Low-Level Structures would be movable bridges that require openings for vessels to pass.
- The Mid and Low-Level Structures tie into the existing approach roadways at their existing grade.
- The High-Level Structure would be a fixed bridge that would eliminate vessel openings.
- The High-Level Structure would require the City Island Road intersection to be raised.

Public Involvement

The Joint Lead Agencies will consider your comments when establishing a reasonable range of alternatives to be studied in the Draft Environmental Impact Statement (EIS).

During development of the EIS, the public will be invited to provide input in the following ways:

- Scoping Comment Period
- Community Events
- Draft EIS Public Comment Period
- Draft EIS Public Hearing

The Scoping Report, Draft EIS, Final EIS, and other project documents will be available on the project website at www.ShoreRoadBridgeBX.com.