



# Rufus King Park Pedestrian Improvements

Queens Community Board 12 – Transportation Committee  
May 12<sup>th</sup>, 2026



# Agenda

- Neighborhood Goals
- Existing Conditions
- Project Proposal
- Timeline



# Public Realm Portfolio



Open Streets



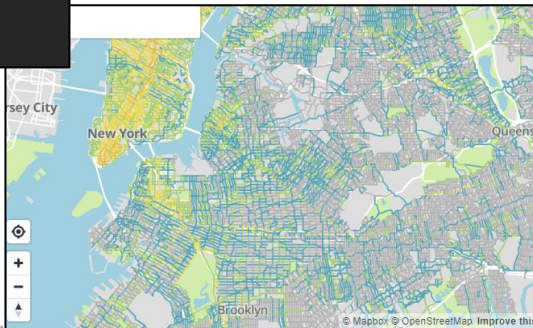
Crossings + Intersections



Dynamic Curb + Corridor Strategies



Community Partnership + Engagement



Comprehensive Planning + Policy



Equity Focused Maintenance



Premier Public Spaces



Programming + Concessions

# Neighborhood Goals

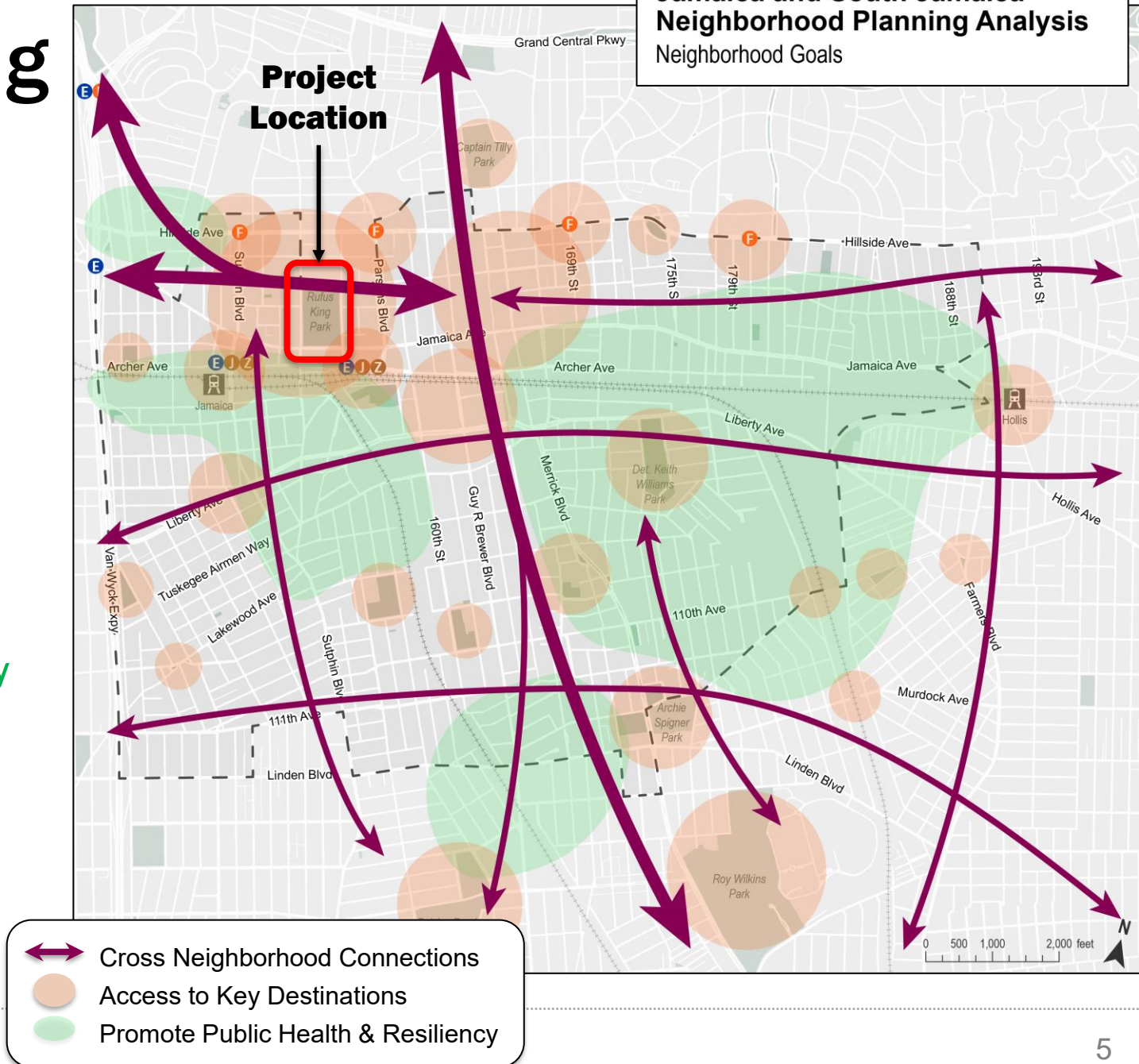


# Comprehensive Planning

## Neighborhood Goals

- DOT has identified **three neighborhood goals** that will help guide potential short- and long-term improvements in Jamaica and South Jamaica. Presented to CB 12 in March 2026.
- The goals are:
  1. **Improve cross neighborhood connections**
  2. **Improve access to key destinations**
  3. **Promote public health and climate resiliency**
- The proposed project at Rufus King Park directly supports **Goal #2** by improving **pedestrian access and safety to the park** which is a key destination and community resource in Downtown Jamaica

**Jamaica and South Jamaica Neighborhood Planning Analysis**  
Neighborhood Goals



# Project Context

- Rufus King Park is a key neighborhood destination and source of open space and recreation for Jamaica
- However, some of the entrances to the park lack marked crosswalks
- Community desire to improve safety and access to the park
- As part of the Jamaica Plan Rezoning, DOT made a commitment to develop a proposal for pedestrian safety improvements near the park

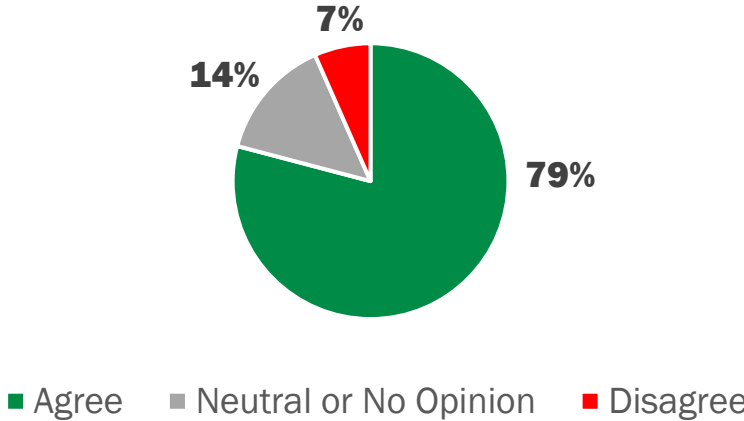


# What We've Heard So Far

- Community desire to improve access to parks and create safer and more comfortable streets for people walking
- On-Street engagement
  - August 2025 – 109<sup>th</sup> Ave Open Street
  - September 2025 – Bike the Block on 89<sup>th</sup> Ave
- Previous requests for crosswalks to park entrances at 90<sup>th</sup> Ave
- On-going Coordination with Parks and other local stakeholders



“In my neighborhood I would like safer and more comfortable streets to walk to parks, stores, or other neighborhood destinations”



# Existing Conditions



# Existing Conditions Summary

1. No marked crosswalk to the park entrances at
  - 90<sup>th</sup> Ave and 150<sup>th</sup> St
  - 89<sup>th</sup> Ave between 150<sup>th</sup> St and 153<sup>rd</sup> St
2. Vehicles blocking crosswalks at newly installed All Way Stop at
  - 90<sup>th</sup> Ave and 153<sup>rd</sup> St
3. Narrow sidewalk and long crosswalk at the intersection of Parsons Blvd and 90<sup>th</sup> Ave
4. No connection for cyclists between the existing bike lane on Parsons Blvd and 160<sup>th</sup> St



# Existing Conditions

1. No marked crosswalk to the park entrances at
  - 90<sup>th</sup> Ave and 150<sup>th</sup> St
  - 89<sup>th</sup> Ave between 150<sup>th</sup> St and 153<sup>rd</sup> St



90<sup>th</sup> Ave and 150<sup>th</sup> St

# Existing Conditions

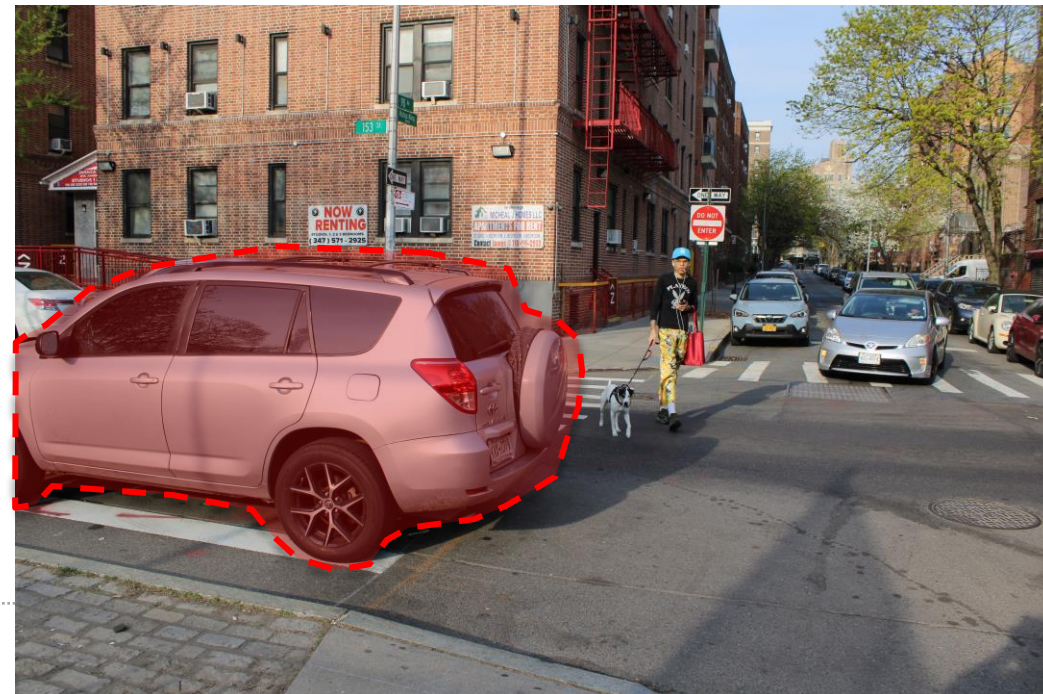
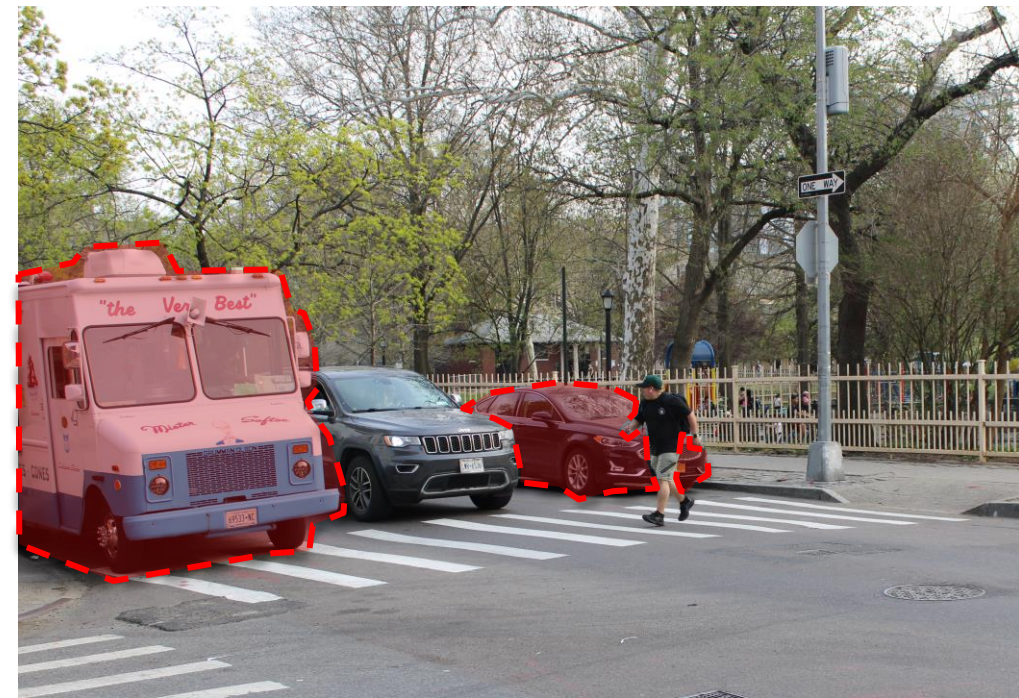
1. No marked crosswalk to the park entrances at
  - 90<sup>th</sup> Ave and 150<sup>th</sup> St
  - 89<sup>th</sup> Ave between 150<sup>th</sup> St and 153<sup>rd</sup> St



89<sup>th</sup> Ave between 150<sup>th</sup> St and 153<sup>rd</sup> St

# Existing Conditions

1. No marked crosswalk to the park entrances at
  - 90<sup>th</sup> Ave and 150<sup>th</sup> St
  - 89<sup>th</sup> Ave between 150<sup>th</sup> St and 153<sup>rd</sup> St
2. Vehicles blocking crosswalks at newly installed All Way Stop at
  - 90<sup>th</sup> Ave and 153<sup>rd</sup> St



# Existing Conditions

1. No marked crosswalk to the park entrances at
  - 90<sup>th</sup> Ave and 150<sup>th</sup> St
  - 89<sup>th</sup> Ave between 150<sup>th</sup> St and 153<sup>rd</sup> St
2. Vehicles blocking crosswalks at newly installed All Way Stop at
  - 90<sup>th</sup> Ave and 153<sup>rd</sup> St
3. Narrow sidewalk and long crosswalk at the intersection of Parsons Blvd and 90<sup>th</sup> Ave



# Existing Conditions

1. No marked crosswalk to the park entrances at
  - 90<sup>th</sup> Ave and 150<sup>th</sup> St
  - 89<sup>th</sup> Ave between 150<sup>th</sup> St and 153<sup>rd</sup> St
2. Vehicles blocking crosswalks at newly installed All Way Stop at
  - 90<sup>th</sup> Ave and 153<sup>rd</sup> St
3. Narrow sidewalk and long crosswalk at the intersection of Parsons Blvd and 90<sup>th</sup> Ave
4. No connection for cyclists between the existing bike lane on Parsons Blvd and 160<sup>th</sup> St

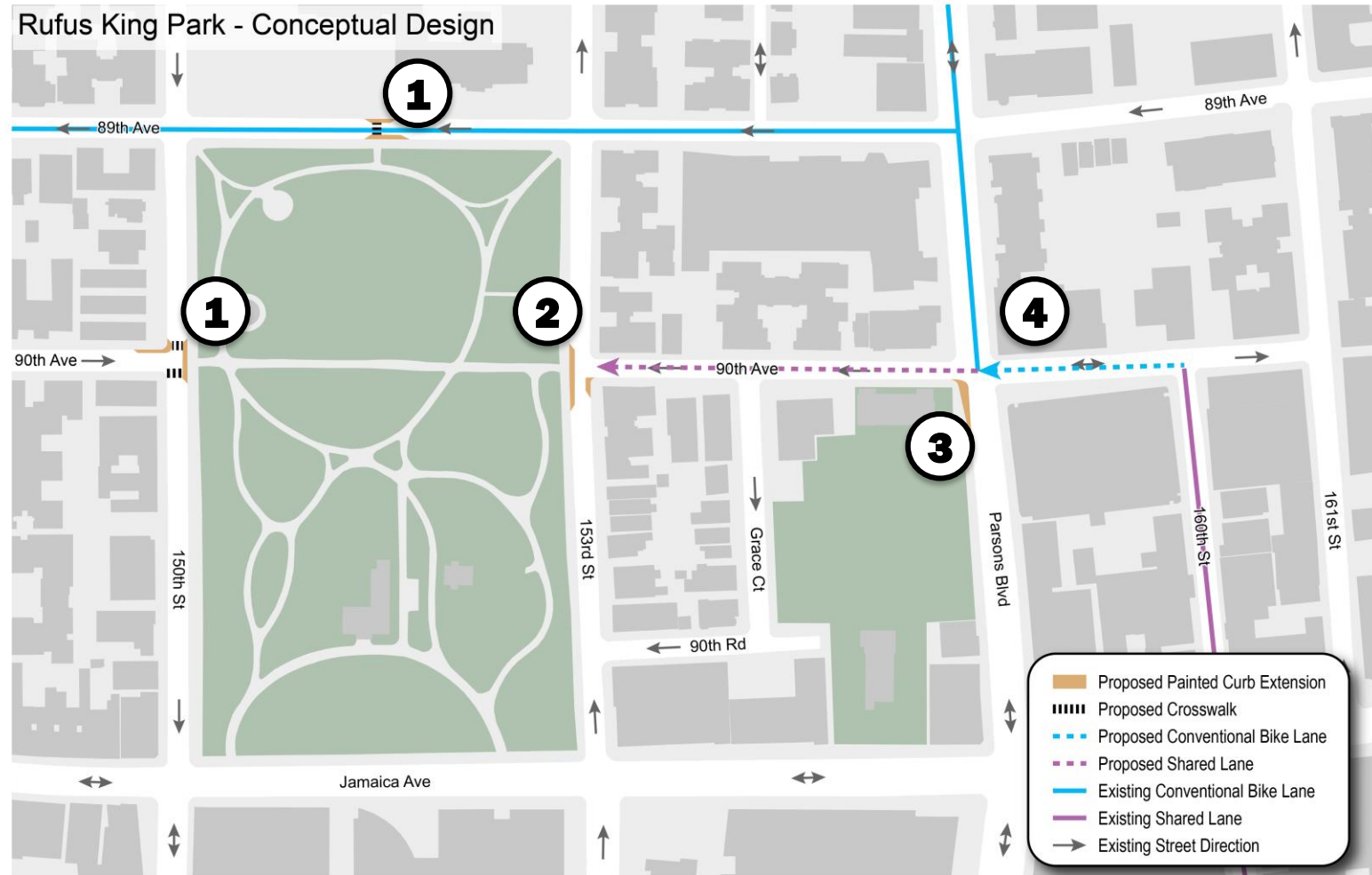


# Proposed Conditions



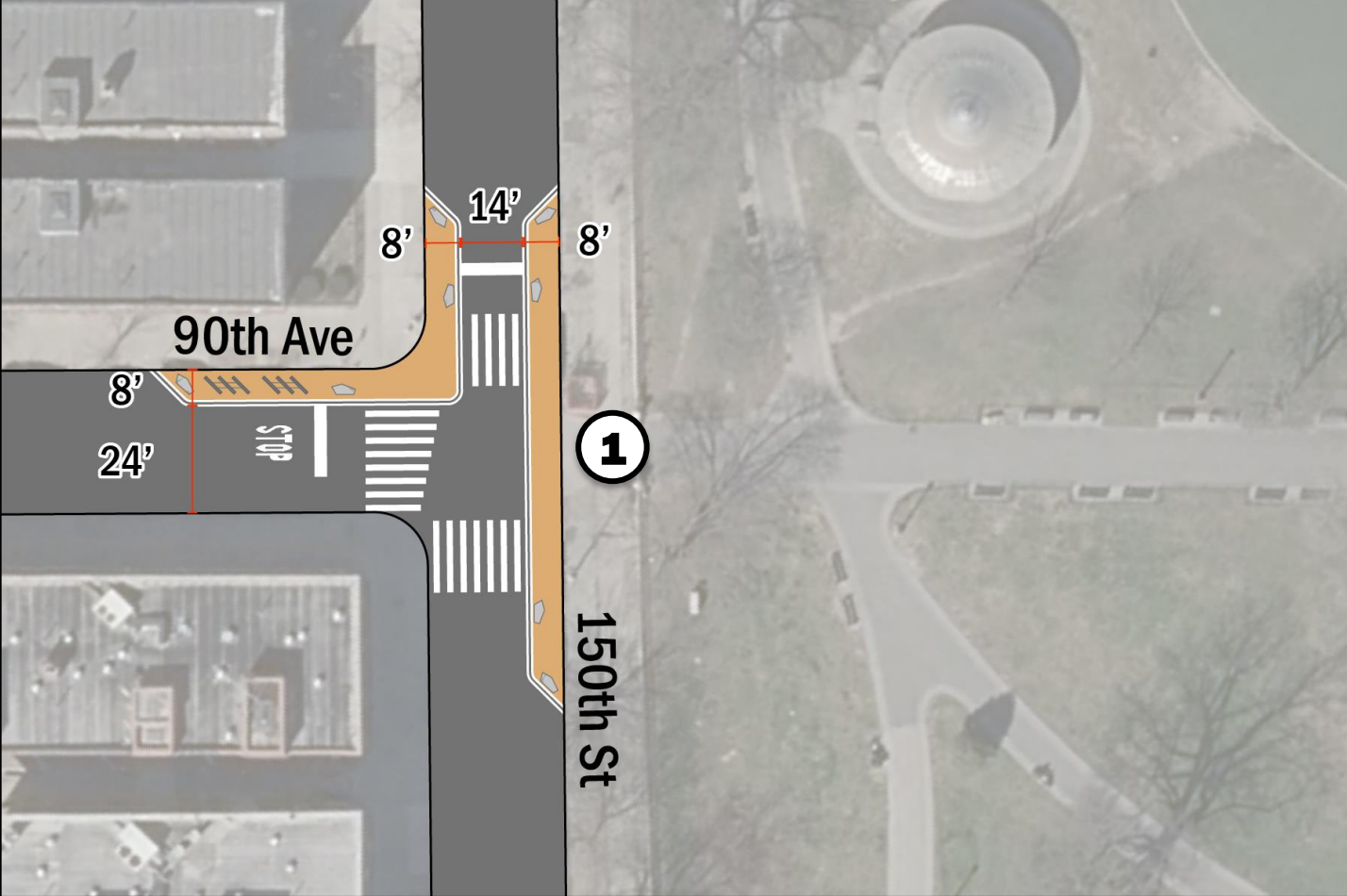
# Proposed Conditions Summary

1. New crosswalks and curb extensions to the park entrances on 150<sup>th</sup> St and 89<sup>th</sup> Ave
2. Curb extensions at 153<sup>rd</sup> St and 90<sup>th</sup> Ave
3. Curb extension at the southwest corner at intersection of Parsons Blvd and 90<sup>th</sup> Ave
4. Conventional westbound bike lane on 90<sup>th</sup> Ave between 160<sup>th</sup> St and Parsons Blvd, and shared lane markings from Parsons Blvd to 153<sup>rd</sup> St



# Proposed Conditions

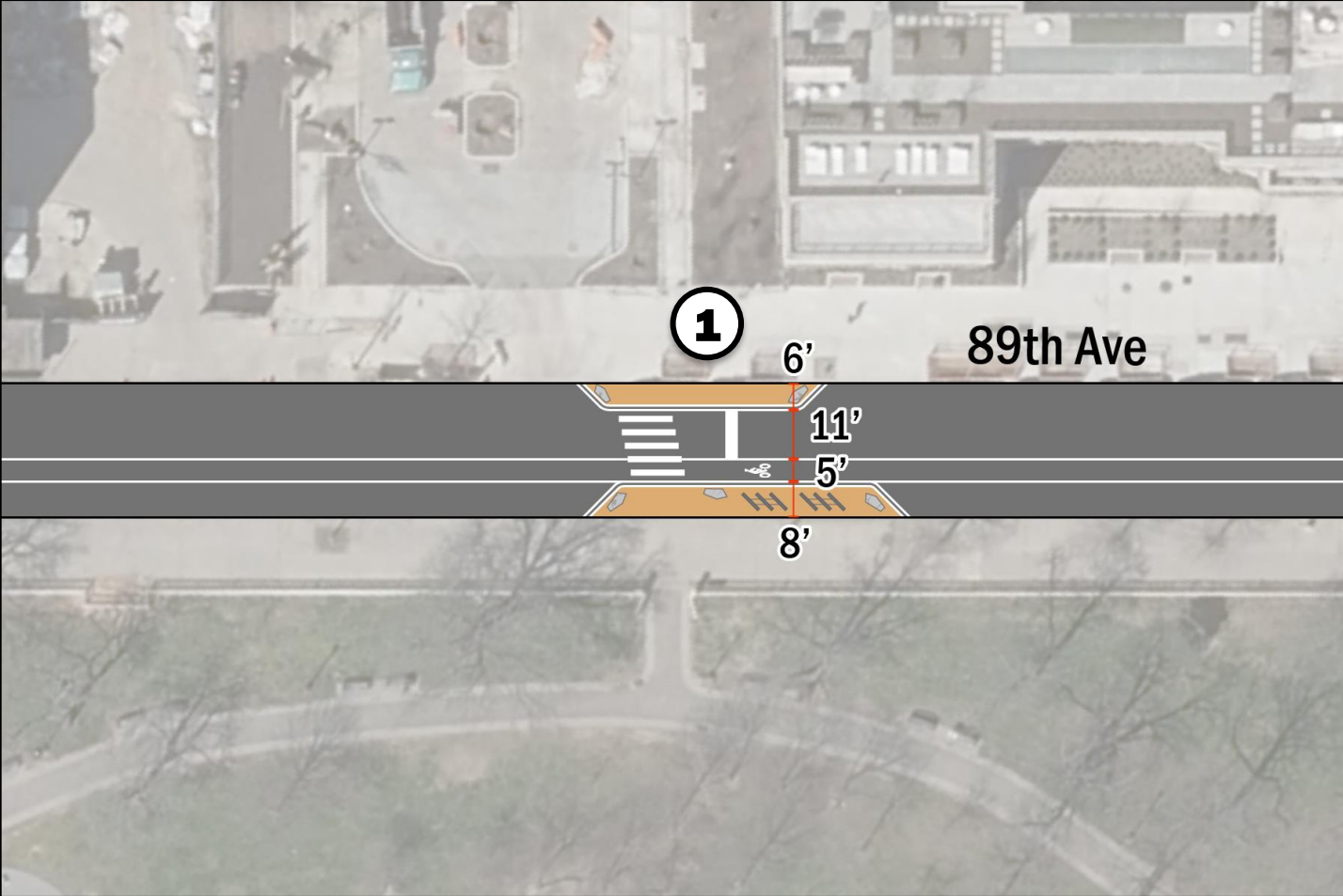
- 1. New crosswalks and curb extensions to the park entrances on 150<sup>th</sup> St and 89<sup>th</sup> Ave



*Specific edge objects to be determined*

# Proposed Conditions

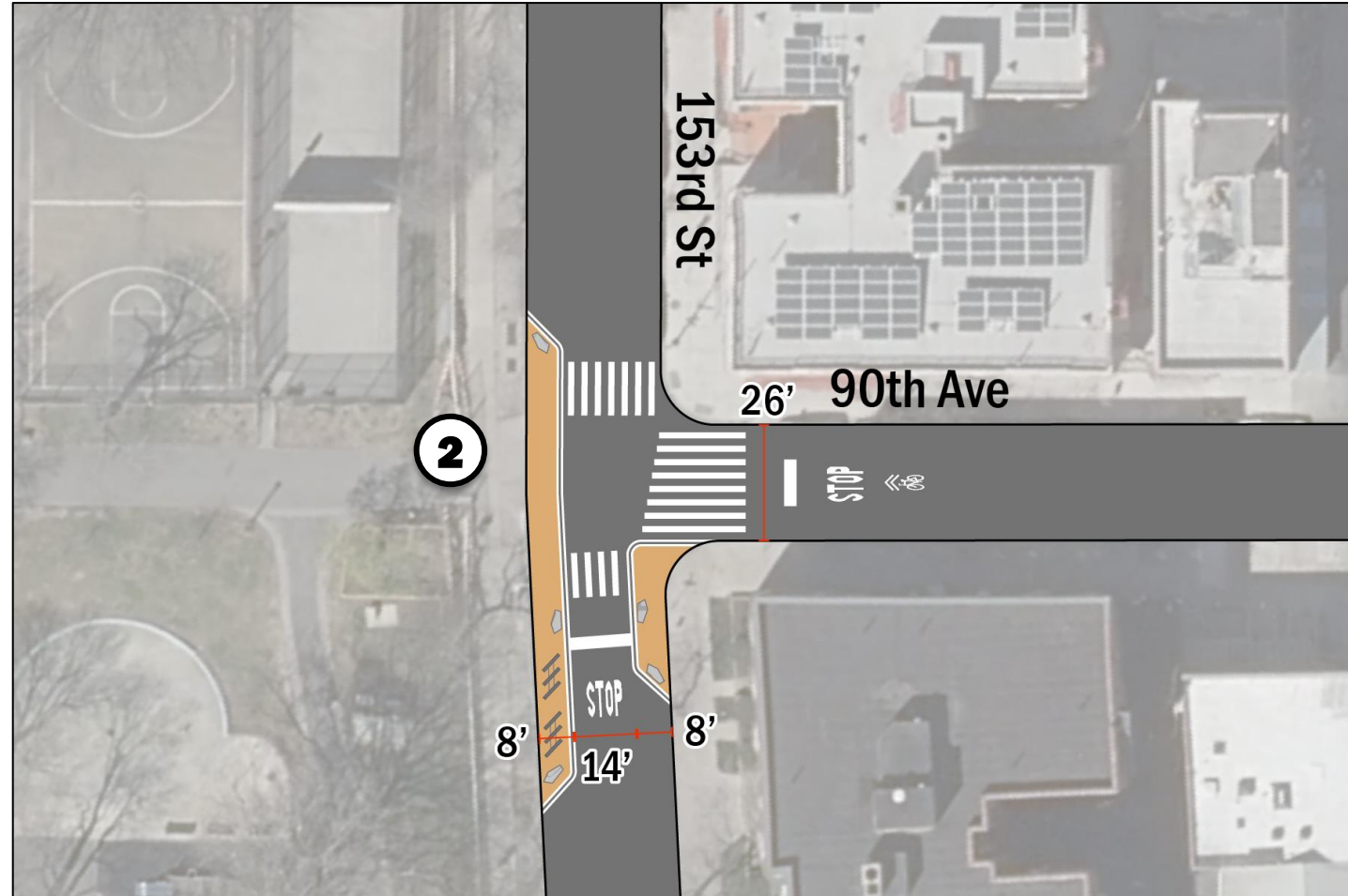
- 1. New crosswalks and curb extensions to the park entrances on 150<sup>th</sup> St and 89<sup>th</sup> Ave



*Specific edge objects to be determined*

# Proposed Conditions

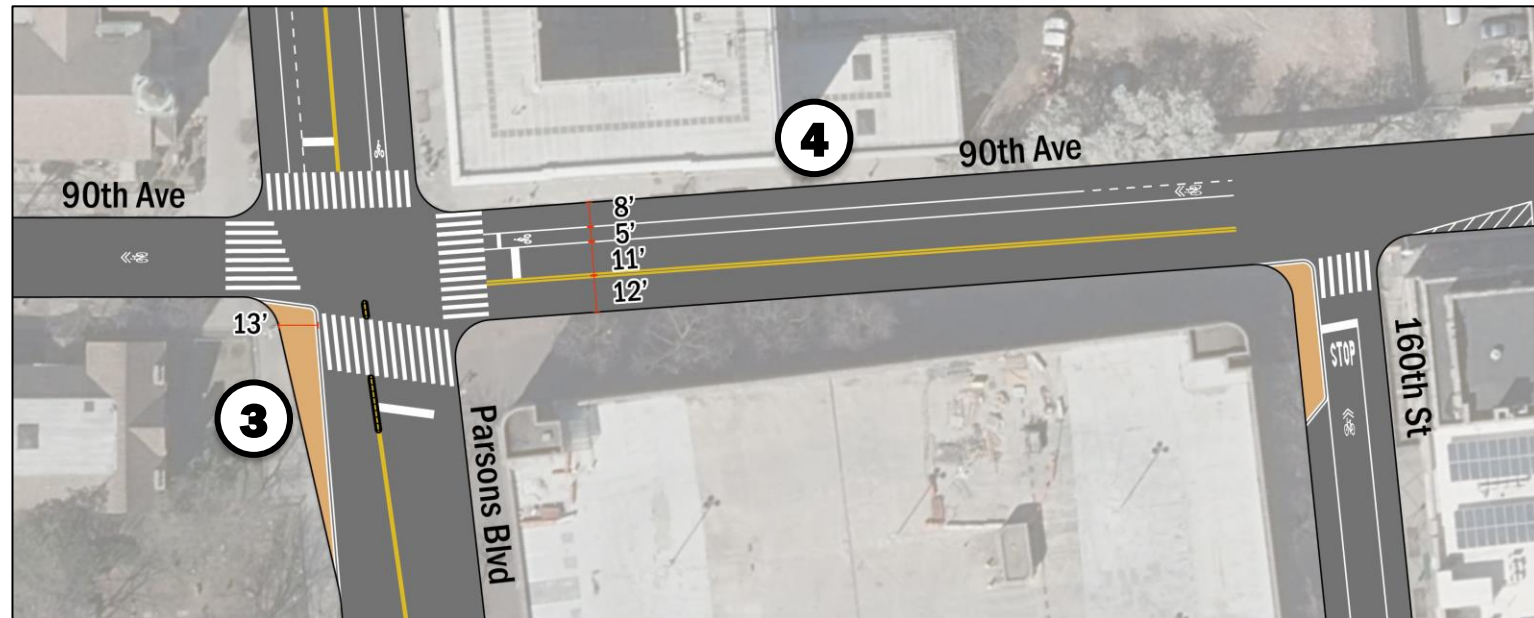
1. New crosswalks and curb extensions to the park entrances on 150<sup>th</sup> St and 89<sup>th</sup> Ave
2. Curb extensions at 153<sup>rd</sup> St and 90<sup>th</sup> Ave



*Specific edge objects to be determined*

# Proposed Conditions

1. New crosswalks and curb extensions to the park entrances on 150<sup>th</sup> St and 89<sup>th</sup> Ave
2. Curb extensions at 153<sup>rd</sup> St and 90<sup>th</sup> Ave
3. Curb extension at the southwest corner at intersection of Parsons Blvd and 90<sup>th</sup> Ave
4. Conventional westbound bike lane on 90<sup>th</sup> Ave between 160<sup>th</sup> St and Parsons Blvd, and shared lane markings from Parsons Blvd to 153<sup>rd</sup> St



*Specific edge objects to be determined*

# Example - Berry St, Brooklyn

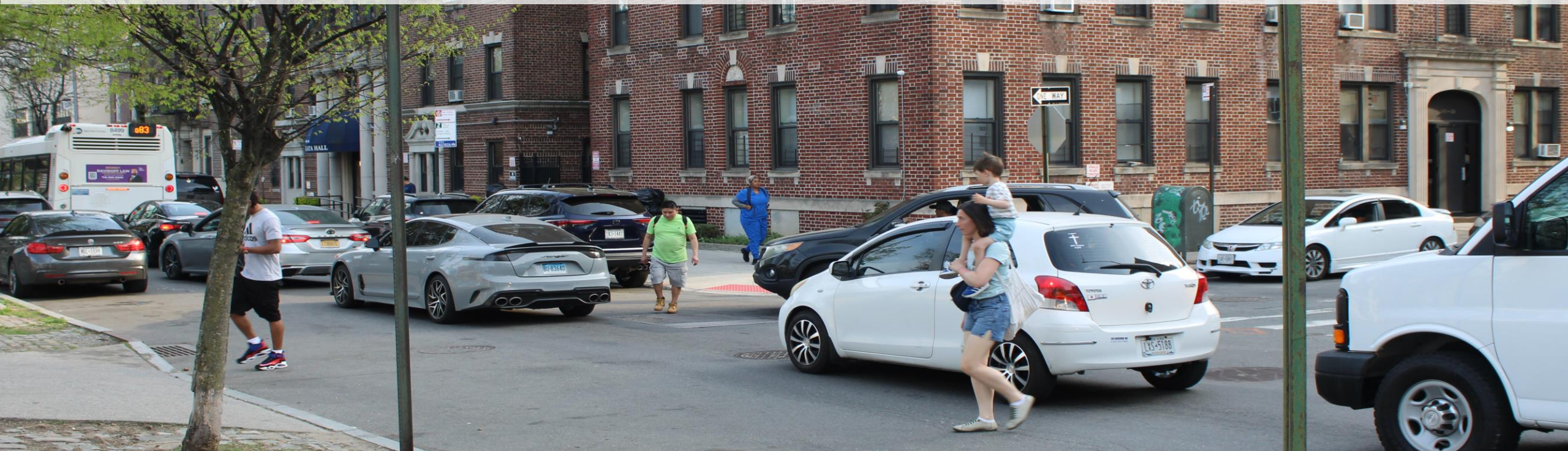


# Next Steps & Project Schedule

**2025**

Spring	Stakeholder Engagement Community Board Presentation
Summer - Fall	Project Implementation

# Benefits



- Adds new pedestrian crossings
- Shorter, safer and more comfortable crossings
- Improve access to the park
- Reduces speeding and calms traffic
- Adds new bike connection

**Thank You  
Questions?**

