

# Rockaway Beach Boulevard

## Capital Corridor Safety Improvements

2015





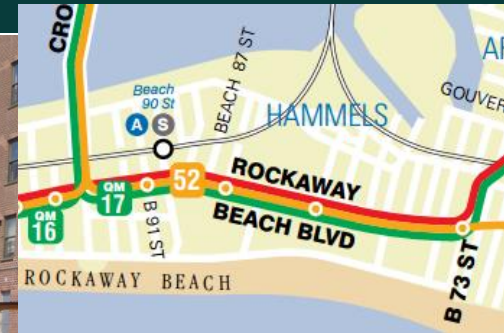
# Project Background

- DOT received multiple community requests to slow speeding vehicles, install medians, since 2010
- Street damage from Superstorm Sandy in 2012
- Pre-existing planned DEP/DDC water main project (QED-982)
- DOT working with DEP/DDC on FHWA Emergency Relief Streetscape project (SANDHW13) to add Vision Zero safety benefits to corridor



# Existing Conditions

- Dramatic road width increase in front of NYCHA Hammel Houses (Beach 81<sup>st</sup> to Beach 86<sup>th</sup> Sts)
- Rockaway Beach Blvd traffic volume fits in one lane in each direction
- High incidence of speeding because the street is so wide
- Important transit route (Q22,Q52,QM17 buses; near A/S Subway)





# Need: Why Rockaway Beach Blvd?

Long crossing distances



54 % of vehicles traveling over speed limit



Substandard sidewalk facilities



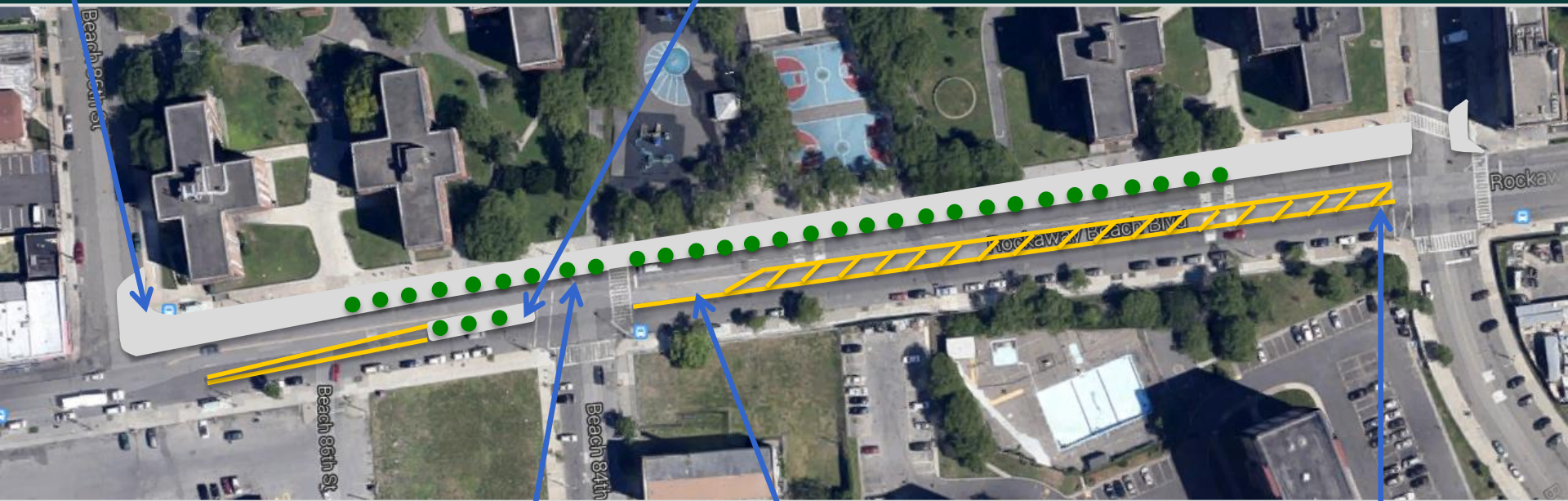
Inconsistent road width



# Proposed: Beach 81<sup>st</sup> to 86<sup>th</sup> Sts

Extend sidewalk  
to create standard  
roadway width

Add green median  
to shorten  
crossing distance



Add sidewalk  
trees where  
feasible

Add left turn bays

Extend street  
width and feel  
from Arverne



# Existing: Beach 84<sup>th</sup> St



# Proposed: Beach 84<sup>th</sup> St

- Extend north sidewalk in front of Hammel Houses to match width of Rockaway Beach Blvd in near Arverne/YMCA
- Add pedestrian refuge island at B 84<sup>th</sup> St, and trees where possible





# Benefits of Proposal

- Creates consistent street width, that matches traffic volumes
- Reduces speeding / calms traffic
- Simpler, safer left turns
- Safer pedestrian crossings
- Creates larger, more livable sidewalk space
- Adds trees and greenery





# DDC QED-982 Capital Timeline

Rockaway Beach Blvd: Beach 73<sup>rd</sup> to Beach 88<sup>th</sup> Streets

Design phase goals

- Fall 2015: Design completed
- Late Fall 2016: Construction scheduled to begin



Questions?



Thank  
You

Contact: NYCDOT Queens Borough Commissioner's Office at 212-839-2510