



Red Hook Traffic and Truck Study

Kickoff Meeting

March 14, 2023

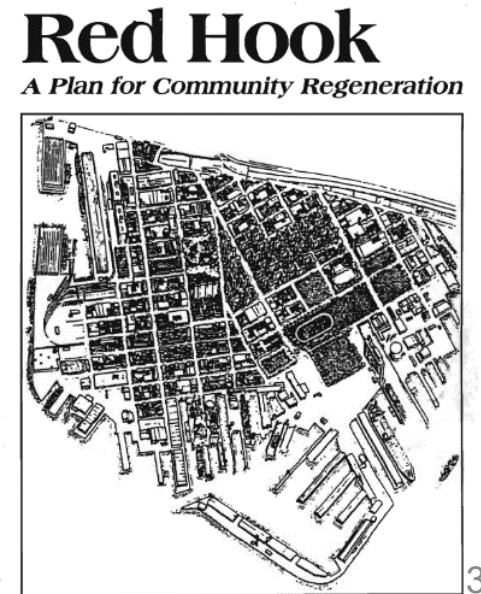
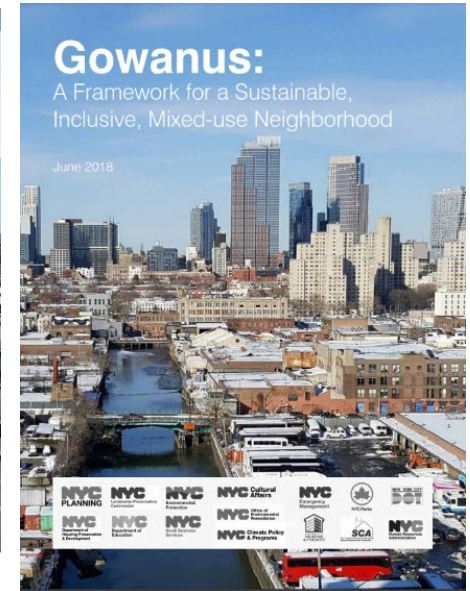
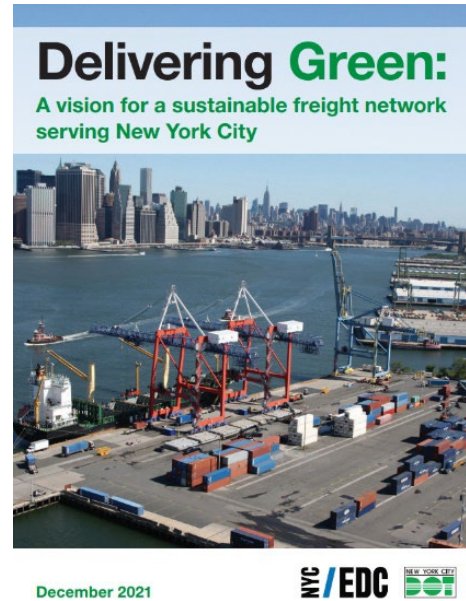


Red Hook Traffic and Truck Study

Agenda

- Study Background
- Study Area Boundaries
- Goals & Objectives
- Study Process & Areas of Analysis
- Public Outreach / Coordination with Other Agencies
- Next Steps

A Policy and Program Framework



Moving People & Goods:

Freight Mobility: Truck Traffic, Marine, Rail

Marine freight demand measures should be encouraged to reduce truck traffic throughout the city and in Red Hook

Manage Demand



Off-Hour Deliveries



Micro-distribution Hubs

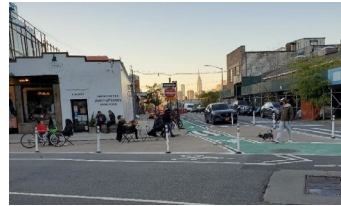
Enhance safety, network connectivity & curb access



Truck Route Management



Expand Loading Zones



Conflict reducing designs



Truck Safety Education,
Outreach, & Partnerships

Promote sustainable last-mile delivery ecosystem



Commercial Cargo Bike Program

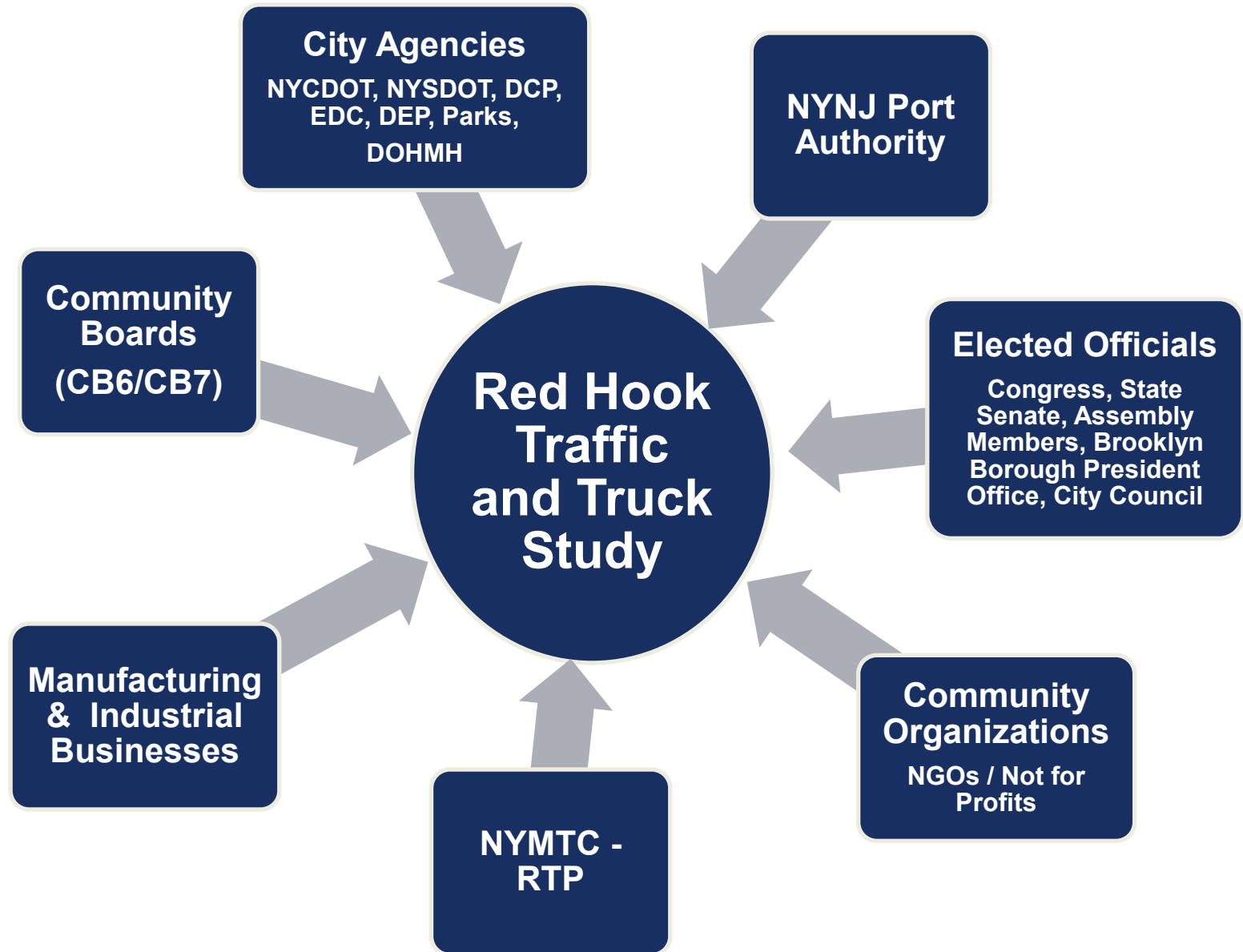


Truck Electrification

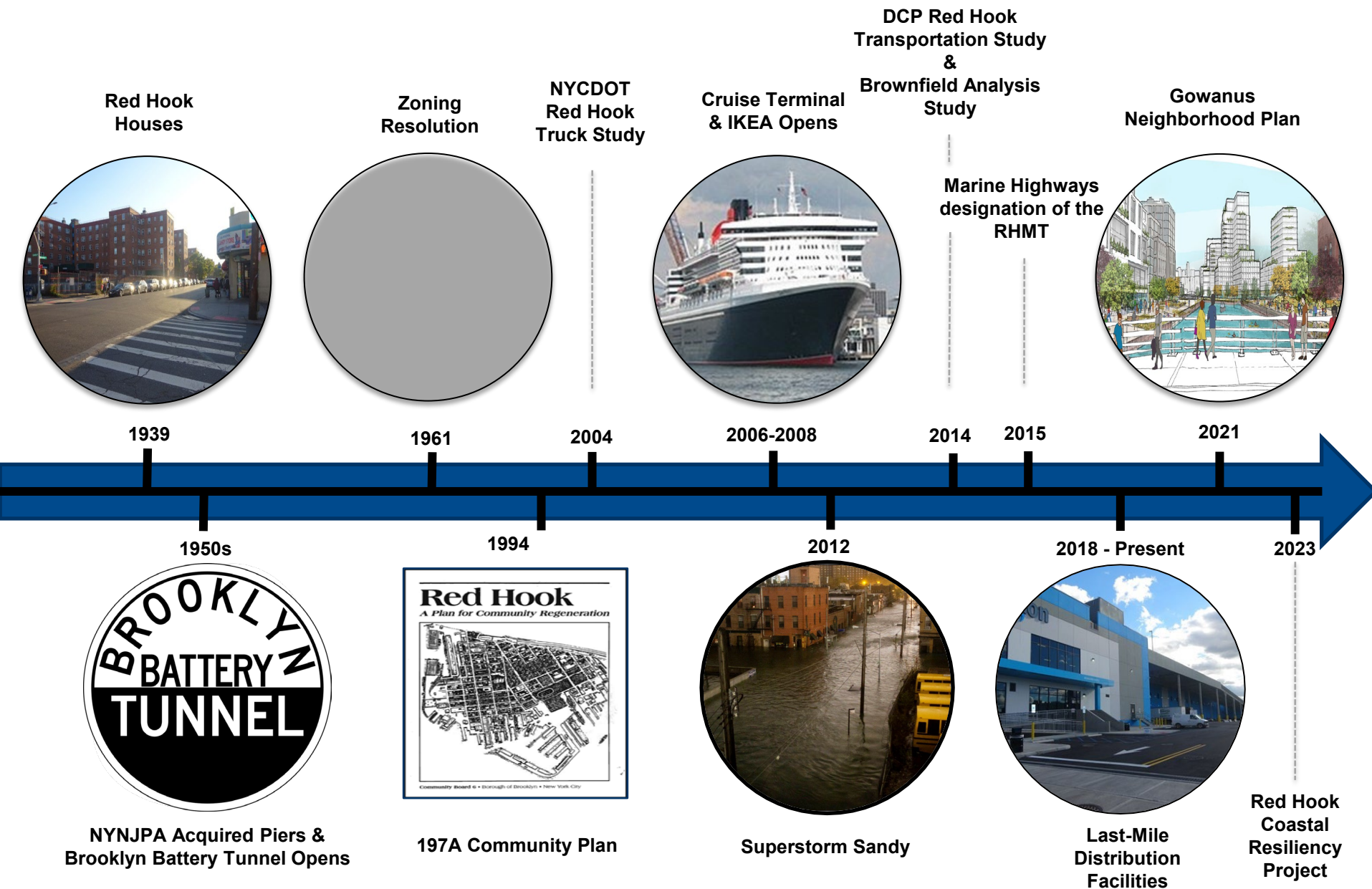


Blue Highways

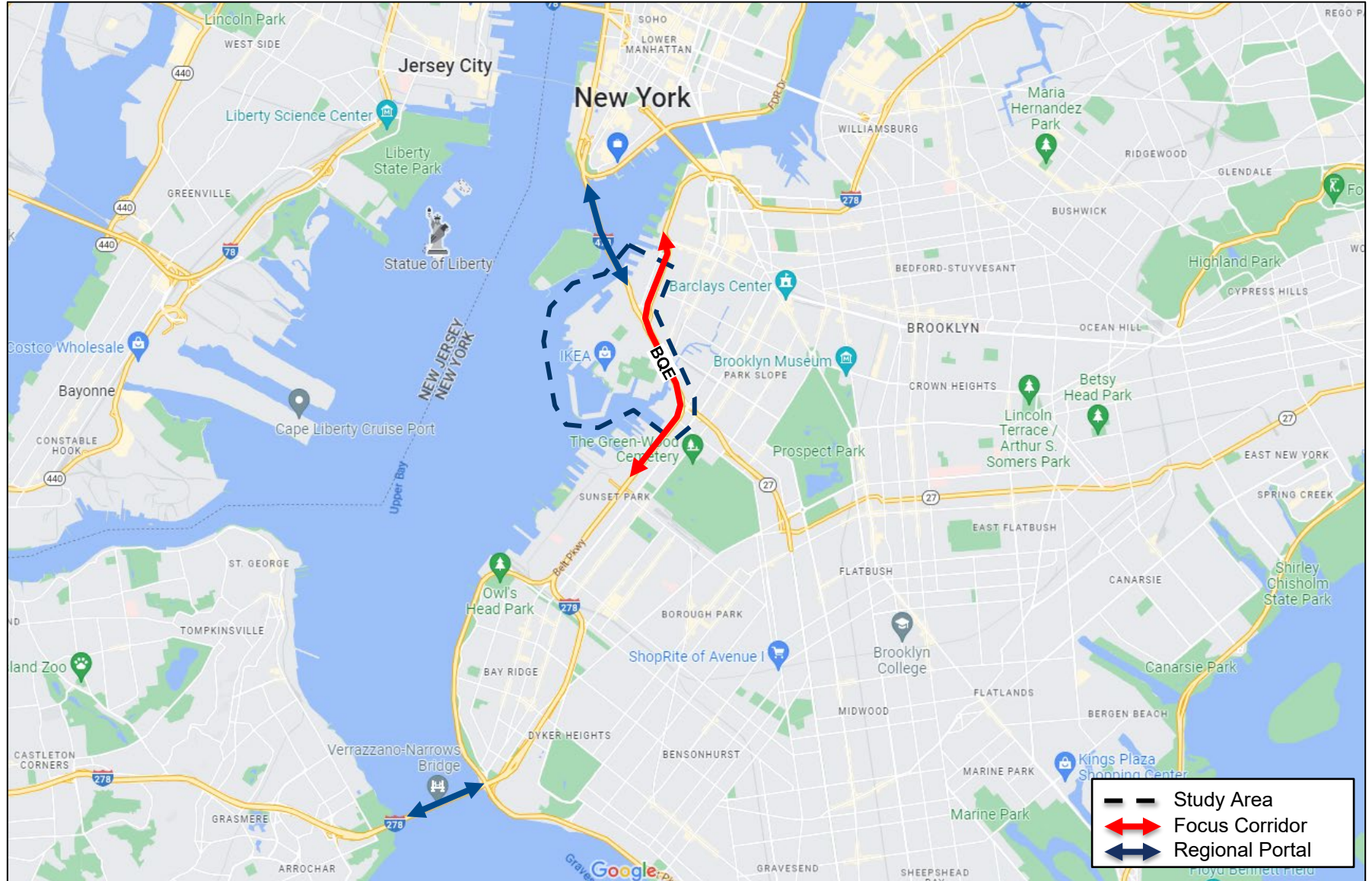
Stakeholders



Development Timeline



Study Area – Regional Context



Traffic Study Area



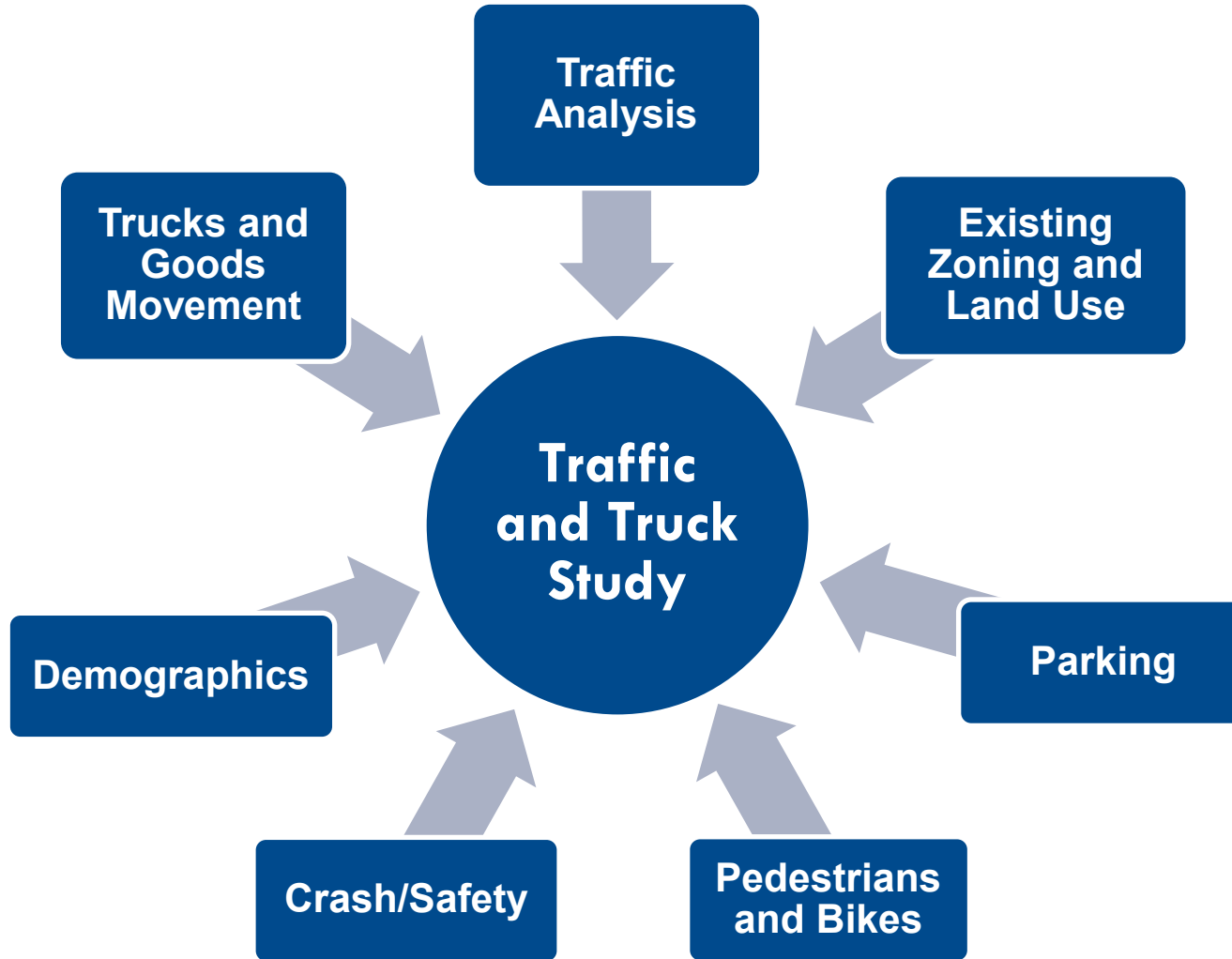
Goal and Objectives

Goal - Improve travel conditions for all street users (motorists, cyclists, and pedestrians), while enhancing safety and the quality of life for residents in the area.

Objectives

- To evaluate existing and future traffic conditions and develop quantitative measures to assess the effect of truck traffic
- To facilitate extensive public participation through TAC and public meetings / workshops-web portal,
- Generate recommendations & develop improvement measures to address community concerns, reduce congestion, facilitate other modes of travel and enhance safety.
- To coordinate various projects/initiatives in the study area

Areas of Analysis / Elements of the Study



Demographic Analysis



Population



Vehicle Ownership



Household Size



Journey to Work



Household Income



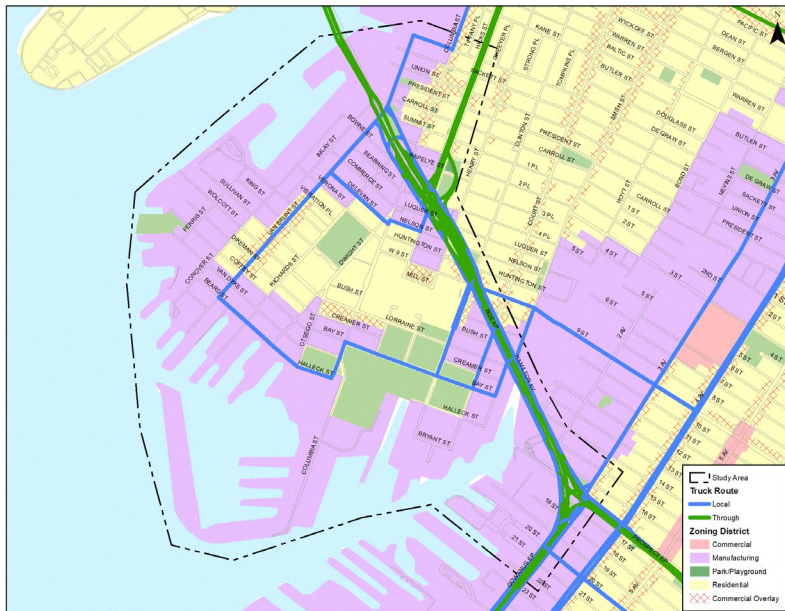
Employment

Sources: Census/CTPP

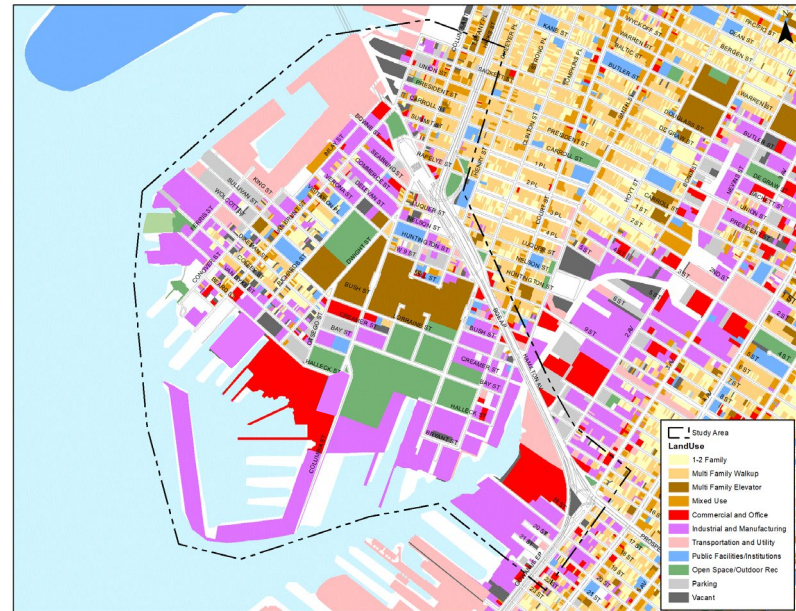
Existing Zoning and Land Use

Use, Density and Trip Generation Characteristics

- **Zoning** (Zoning Districts & Recent Rezoning)
- **Land Use** (Residential, Commercial, Industrial / IBZ)
 - Trip Generation, Institutional, Community Facilities, LMDC



Zoning Districts



Land Use

Last Mile Development in Red Hook & Sunset Park, Brooklyn

| | | |
|--------------------|---|--|
| Active | 1 | 55 Bay Street – Amazon - 83,000 SF |
| | 2 | 270 Richards – Amazon – 305,000 SF |
| | 3 | 640 Columbia – Amazon – 336,000 SF |
| Under Construction | 4 | 722-750 Court – RXR – TBD |
| | 5 | 50 21 Street – SIP Holdings – 1.3 Mil SF |
| | 6 | 73 20 Street – Bridge Industrial – 47,280 SF |
| | 7 | 64 20 Street – Bridge Industrial – 218,566 SF |
| | 8 | 202-240 Coffey St – UPS – 1.2 Million SF |
| Demolition | 9 | 63 Ferris/145 Wolcott – Cushman & Wakefield – 379,000 SF |



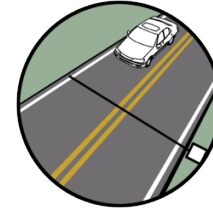
Source: DCP Brooklyn Office, February 2023

Traffic

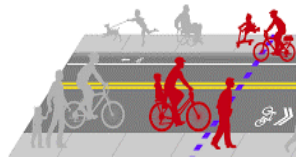
Data Collection

- ATRs & Video Turning Movement Counts

- *Classifications – Auto, Commercial Van, Box Truck, Medium Truck, Tractor Trailer, Bus*



- Pedestrian/Bike Counts



- Travel Speed



- Signal Timing



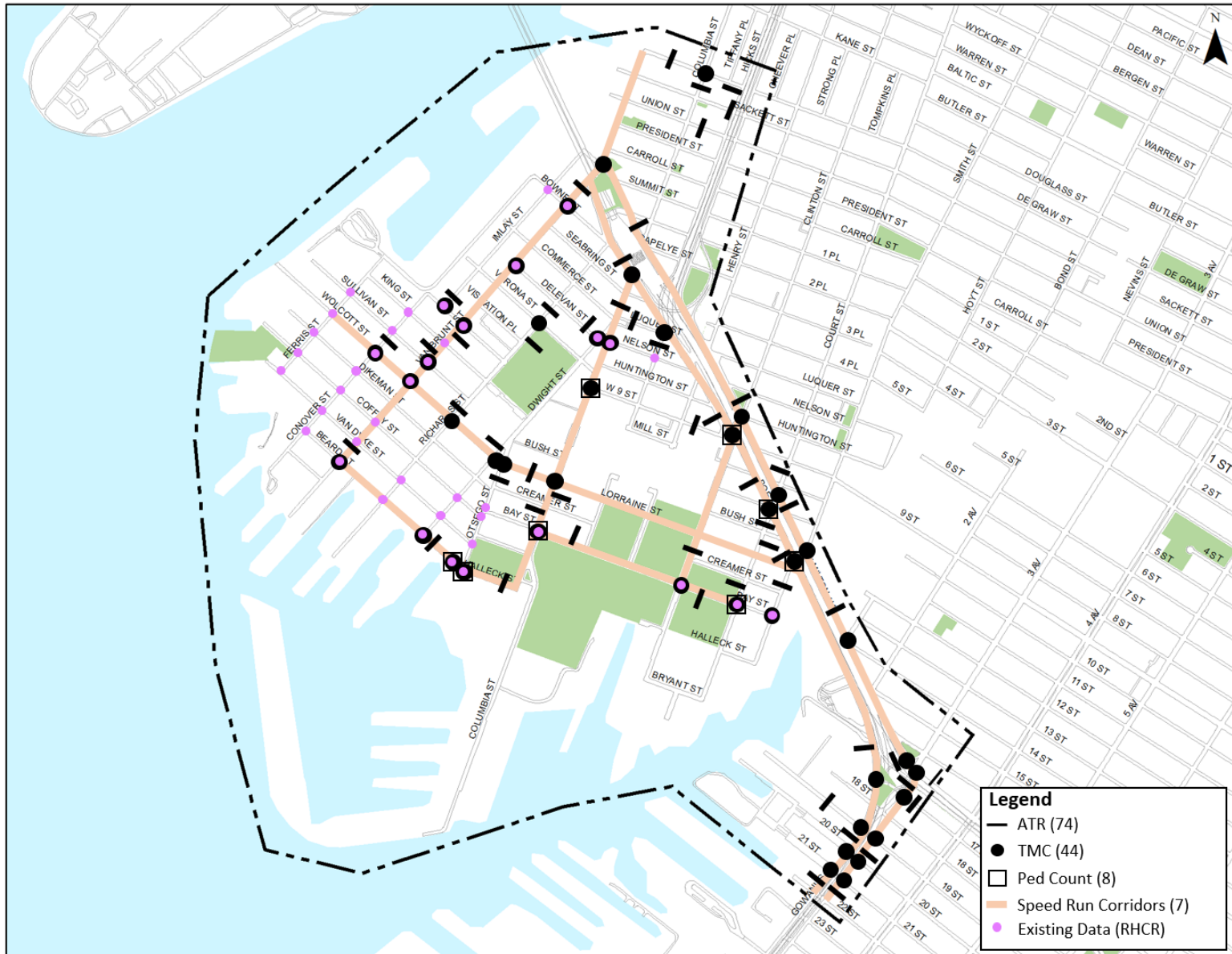
- Street Inventory (Geometry)



- Other Sources:


- *INRIX, STREETLIGHT, DOT TIMS, NYSDOT (AADT), MTA Bus Travel Time, GPS, ATRI, Truck Travel Time*

Traffic - Data Collection Plan



Traffic

Traffic Analysis

- Traffic Capacity Analysis - AM & PM Peak Hours
 - Level of Service (LOS) 
 - Intersection Delays
- Trip O/D (Generation / Distribution / Assignment)
- Corridors Travel Time/Speed

Pedestrians & Bicycles

Safety, Performance, Accessibility



Pedestrian

- Crosswalk Analysis (LOS- Ped/sq ft)
- Safety Issues at Intersections & along Corridors



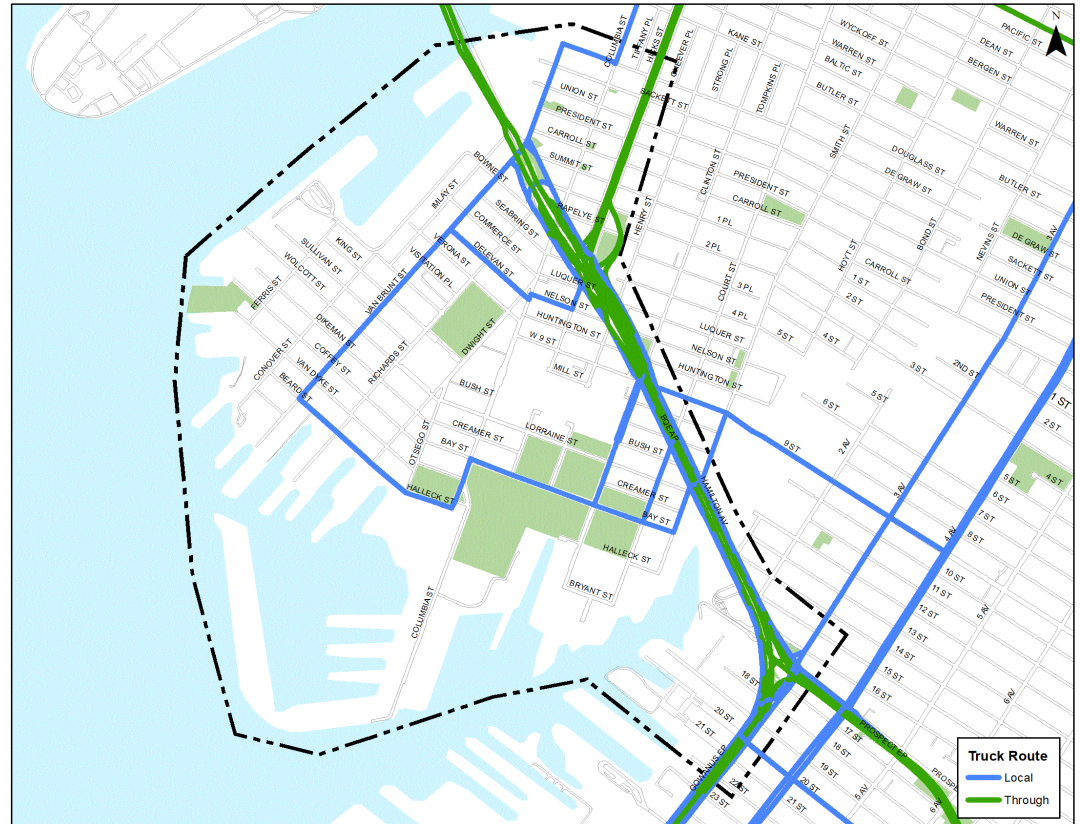
Bicycles

- Bike Network / Greenways
- Existing Facilities & Needs

Goods Movement/Truck Traffic

Truck Needs/Activity/Compliance

- Truck Routes (Through & Local)
- Manufacturing Uses
- Commercial Corridors
- Loading & Unloading
- Curb Utilization
- Truck Safety

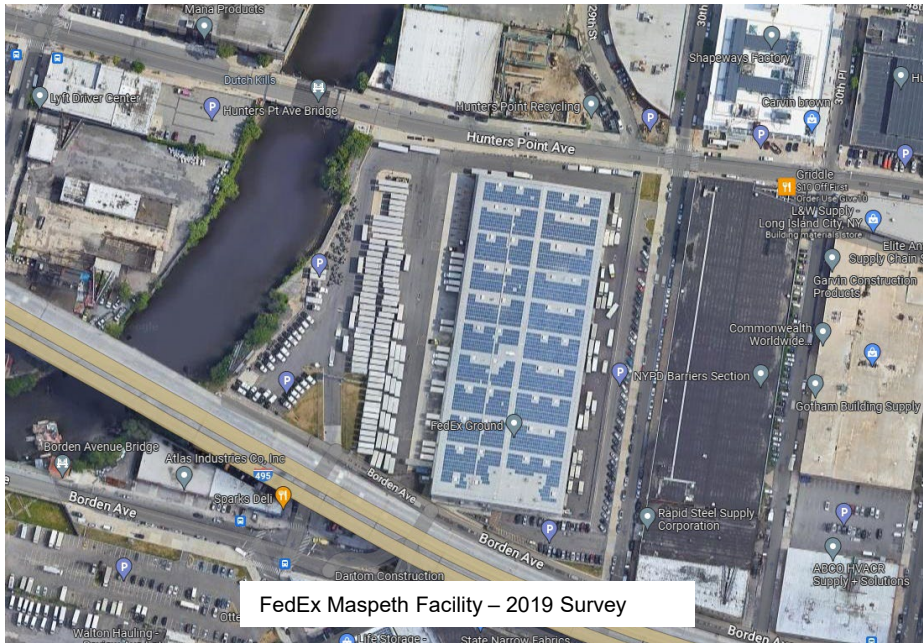


Last Mile Distribution Centers

Trip Generation Study/Surveys

Examine various types of facilities to determine potential effects

- Video Survey – 24 Hours
- Number & type of trips
- Temporal distribution of trips
- Origin/Destination



Crash/Safety Analysis

Location, Frequency and Characteristics

- Crash History (3 most recent years)
- Vision Zero Priority Intersections, Corridors and Areas
 - Court Street Corridor
 - Court Street @ Hamilton Ave
- Types of Crashes, Frequency, and Severity
- Fatalities/High Crash Locations



Parking Analysis

On/Off Street Parking

- **On Street Parking** (along major and commercial corridors)

- Parking Regulations
- Parking Supply & Demand
- Price Structure
- Truck Parking



Parking Regulations

- **Off Street Parking**

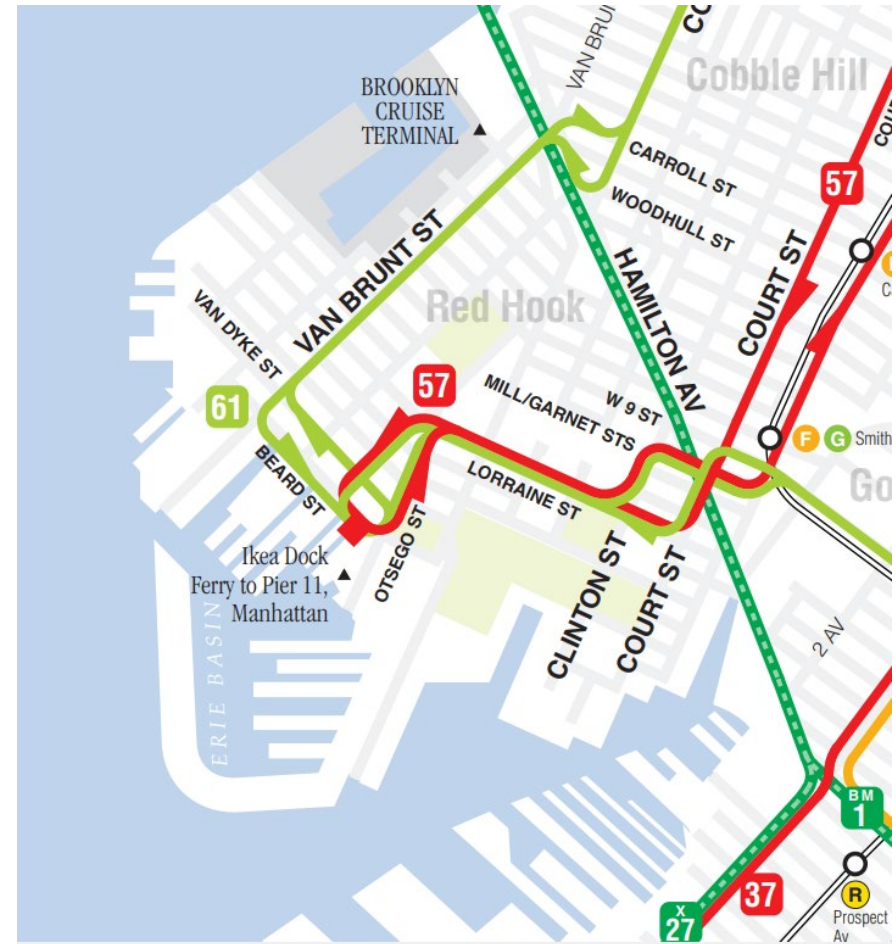
- Lots/Garages, Event Parking
- Capacity, Utilization, & Price Structure



Public Transit / MTA Bus Network Redesign Process

Bus, Subway & Others

- Bus Ridership & Frequency
- Bus Stops, Transfer Points
- Bus Travel Time
- Subway Ridership & Stations
- Coordinate transit activities with MTA/NYCT
- Other Modes (Ferry, Commuter Van, Taxi)



Means of Community Input - Concerns, Issues & Ideas

Public Meeting

Technical Advisory Committee

Community Board

Last Mile Working Group

Public Engagement Unit Survey/ Workshops

Elected Officials

Web Portal / Email

What We've Heard

From Community Forums, Previous Studies, Agency Coordination (TAC)

Evaluation of Halleck Street and Conover/Bowne St as Potential Truck Routes

Truck Related Issues

- Safety
- Air Quality
- Building Structural Integrity
- Noise

Need for Truck Enforcement and Better Signage

- Oversized vehicles
- Off-Route Trucks

Pedestrian Safety

- Difficult crossing Hamilton Avenue (Court St, 9th St)
- Van Brunt (@ Pioneer, Sullivan and Wolcott)
- Clinton St (@ Hamilton, Lorraine and Bay)
- Columbia (@ West 9th, Lorraine, Bay)
- Richards St (@ Sullivan and Wolcott)

Environmental and Social Justice

Red Hook is home to a large population of residents of public housing, with a lower median income than city average.

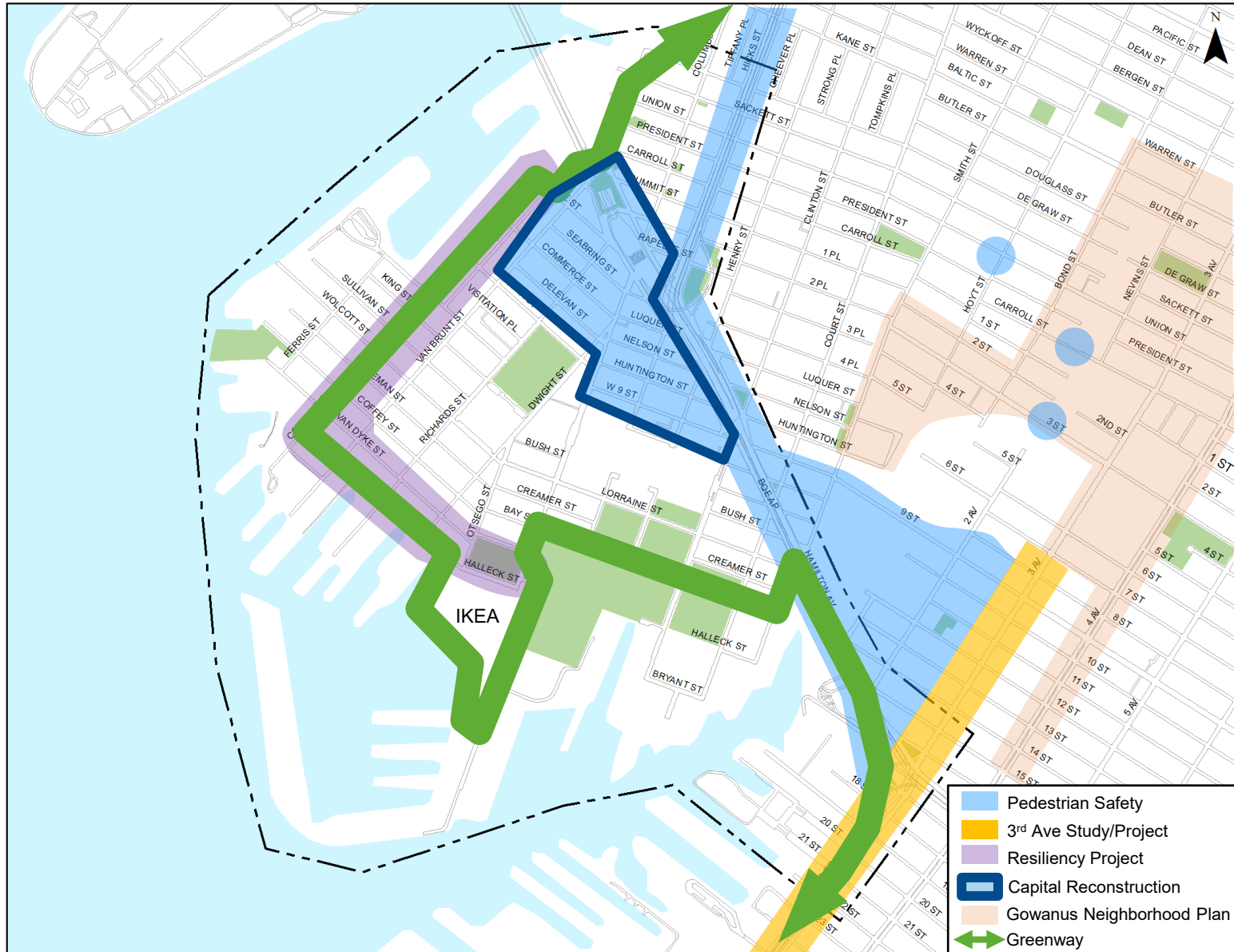
Advocates have suggested that the concentration of distribution centers near public housing raises traffic safety, environmental justice and equity concerns. (source DCP)

Ongoing/Planned Studies & Projects - Context

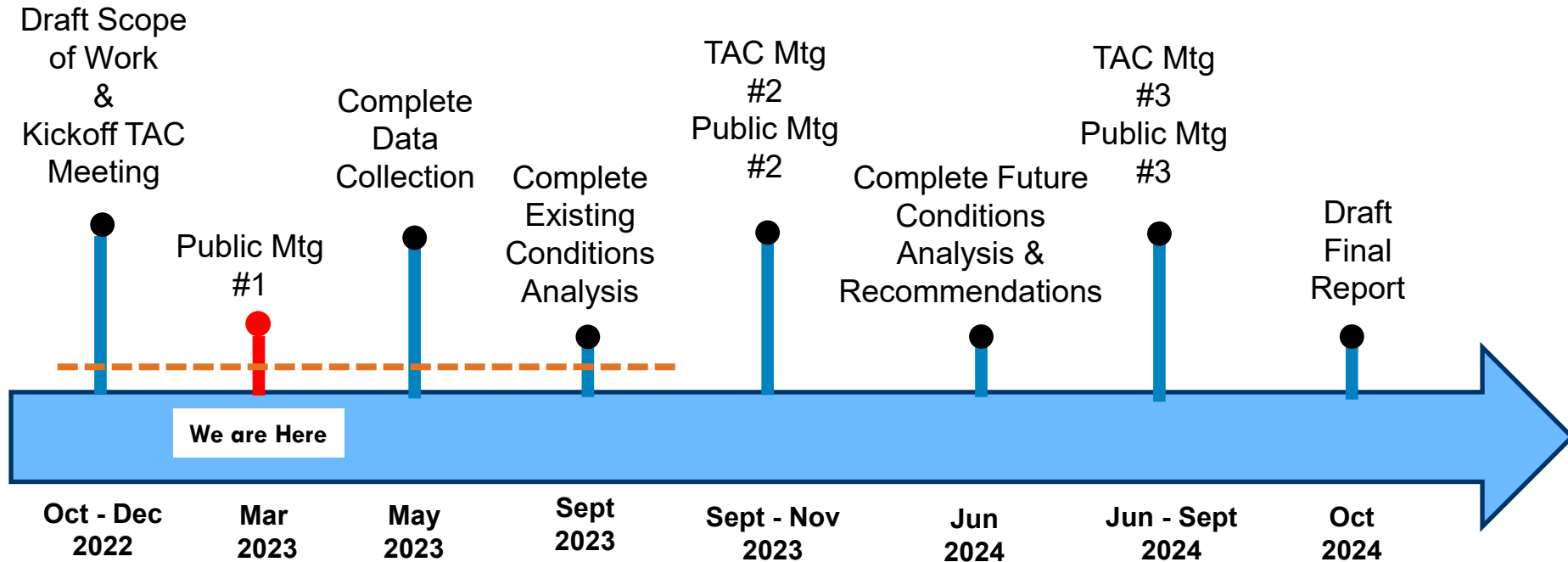


- Red Hook Coastal Resiliency Project
- BQE Corridor Vision
 - * Upcoming Workshops: 3/21/23 & 3/30/23
- Brooklyn Bus Network Redesign
- 3rd Ave Study/Project
 - * Upcoming Workshops: 4/18/23 & 4/27/23
- Harold Ickes Skate Park
- NYC Parks 5 Phased Reconstruction
- Water Tunnel #3 Construction (Hamilton Avenue)
- Brooklyn Greenway
- Gowanus Neighborhood Plan/POA
- Columbia Street Reconstruction Area (Capital)
- 3rd Avenue Reconstruction (Capital)

Major Initiatives



Study Timeline



— — — Amendment: Continuous data collection for seasonal variation

Thank You!

Discussion

Project Portal, Feedback Map and Study Documents:

<https://nycdotprojects.info/project/red-hook-traffic-and-truck-study>

Contact: redhookstudy@dot.nyc.gov



NYCDOT



nyc_dot



nyc_dot



NYCDOT