



PS 20, STATEN ISLAND
HEBERTON, PARK, & CASTLETON AVENUES

School Safety Improvements

Presentation to Community Board 1 February 21, 2017



VISION ZERO PRIORITY

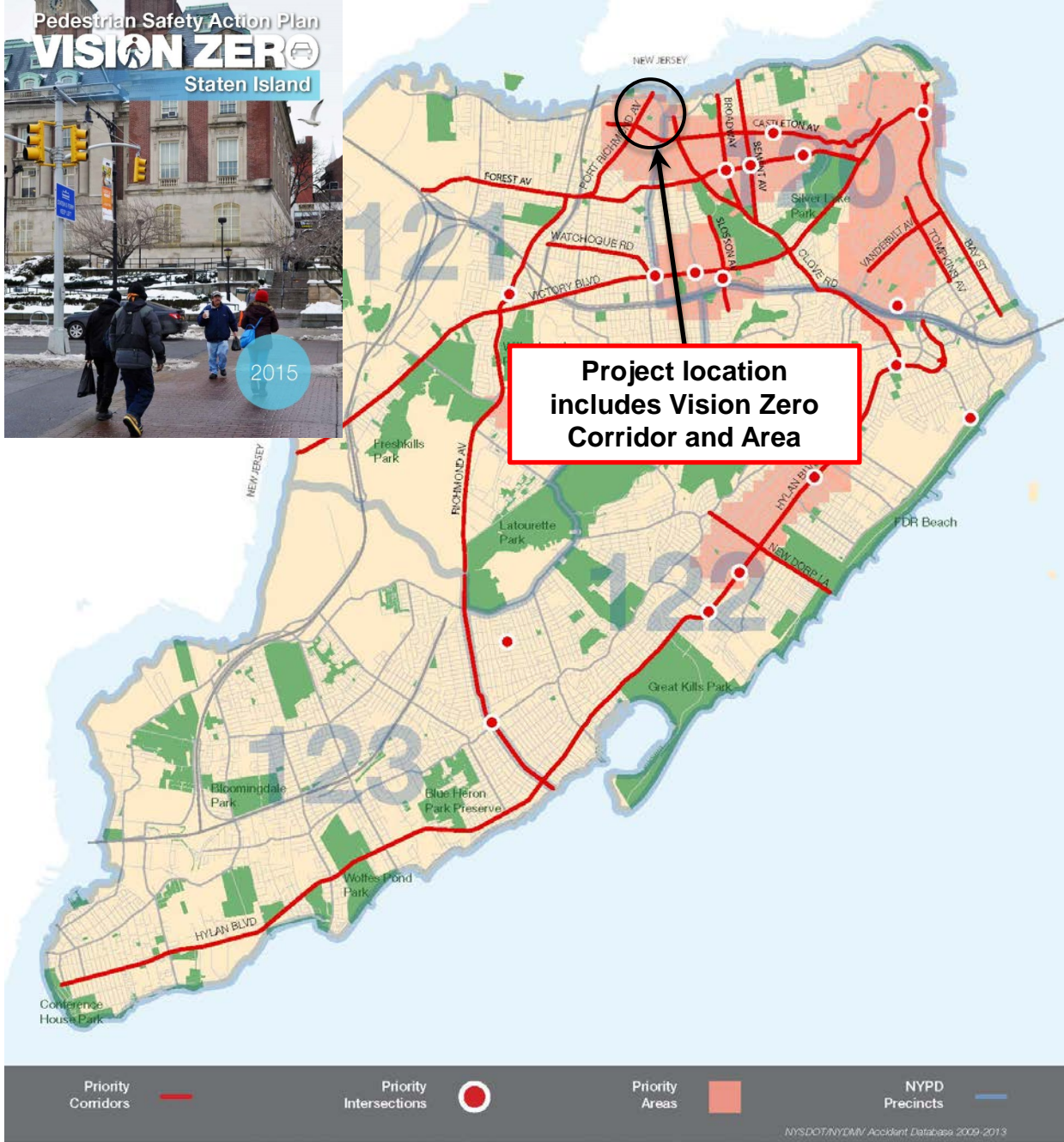
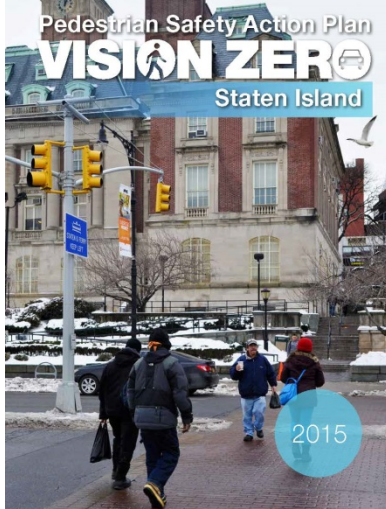
Staten Island Priority Geographies

Vision Zero

- Multi-agency effort to reduce traffic fatalities in NYC
- Borough Action Plans released in 2015
- Priority Intersections, Corridors, and Areas identified for each borough

PS 20

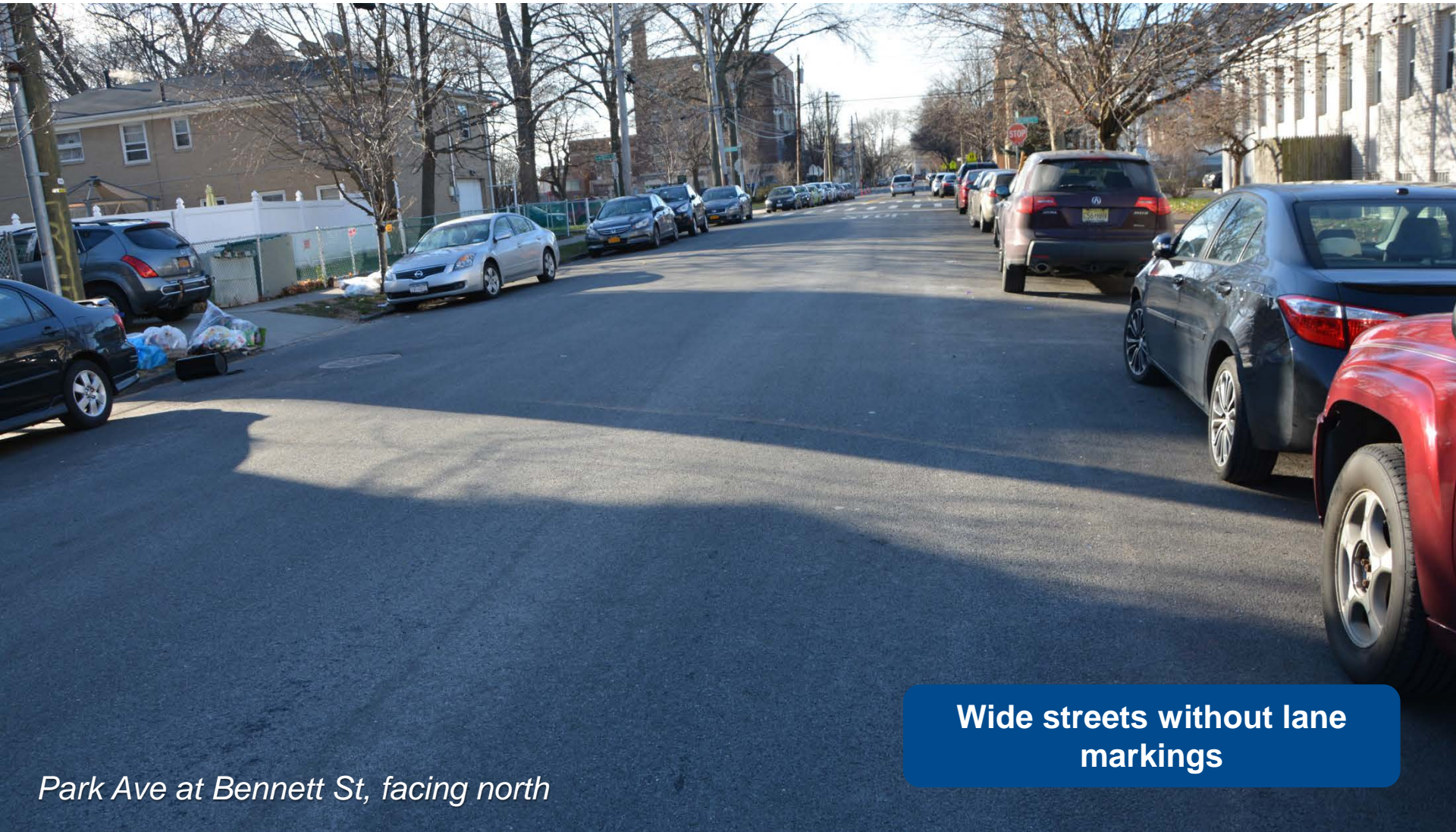
- Priority Corridor
- Priority Area



PROJECT LOCATION



PS 20: EXISTING CONDITIONS



Park Ave at Bennett St, facing north

Wide streets without lane markings

PS 20: EXISTING CONDITIONS



Heberton Ave at New St, facing west

Wide one-way streets allow for high-speed turns near school

PROPOSAL: CURB EXTENSIONS



Construct two new concrete curb extensions:

- Heberton Ave and New St, northeast corner, on New St
- Heberton Ave and Bond St, southeast corner, on Bond St

PROPOSAL: PARKING LANE STRIPES

- Install new parking lane stripes on Park Ave (Bennett St to Richmond Terrace), Heberton Ave (Castleton Ave to Richmond Terrace), and Castleton Ave (Park Ave to Heberton Ave)



Example: Park Ave and New St, looking north

SUMMARY OF PROPOSALS



Construct two new concrete curb extensions:

- Heberton Ave and New St, northeast corner, on New St
- Heberton Ave and Bond St, southeast corner, on Bond St

Install new parking lane stripes:

- Park Ave, Bennett St to Richmond Terrace
- Heberton Ave, Castleton Ave to Richmond Terrace
- Castleton Ave, Park Ave to Heberton Ave

BENEFITS OF PROPOSALS

- Provides safer, shorter pedestrian crossing distances
- Improves pedestrian visibility
- Slower, more controlled turning movements
- Organizes roadway space



Park Ave and New St, looking south

THANK YOU!

Questions?

Contact: NYCDOT Staten Island Borough Commissioner's Office – (212) 839 2400



NYC DOT



NYC DOT



nyc_dot



NYC DOT