



PARK AVE, NAVY ST AND FLUSHING AVE

Brooklyn Community Board 2

April 19, 2018



Project Background

1

PROJECT AREA

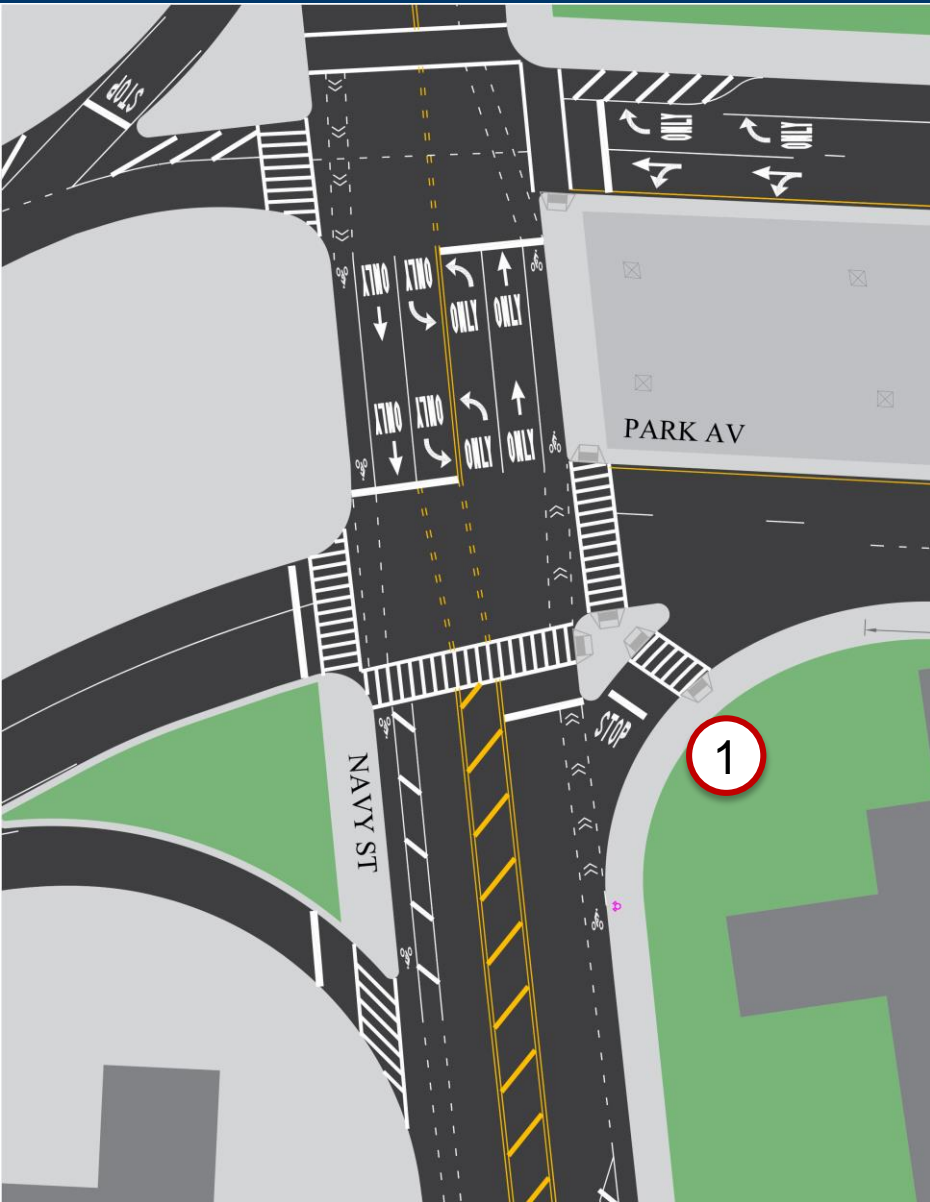
- 1 Community Request to close slip lane at Navy St
- 2 Flushing Ave is a Vision Zero Corridor



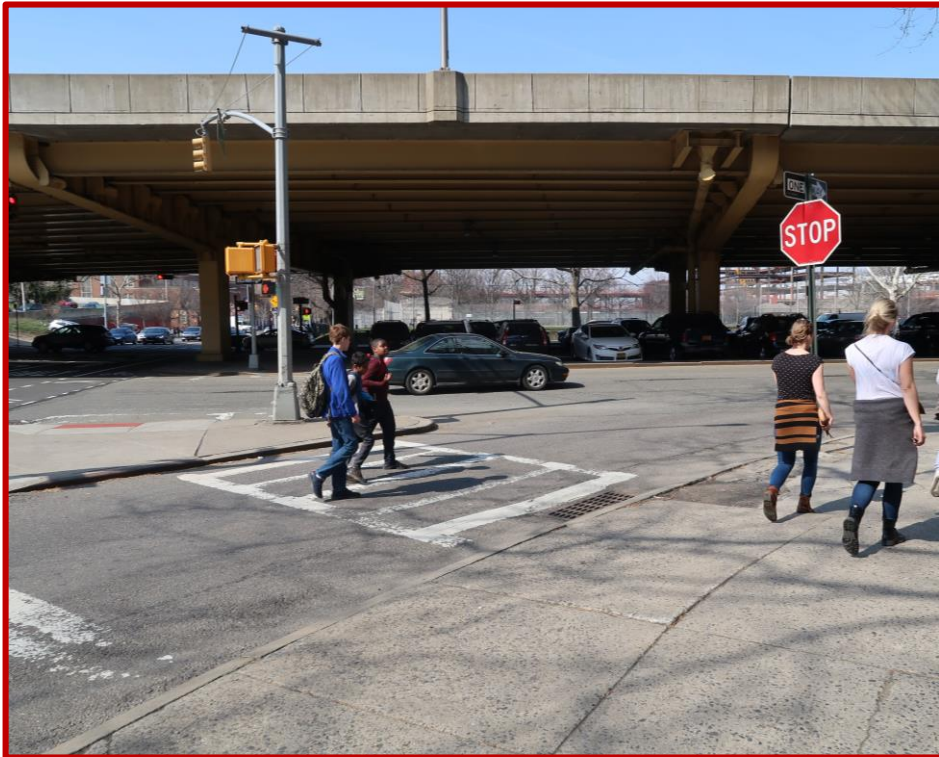
Project Proposal

2

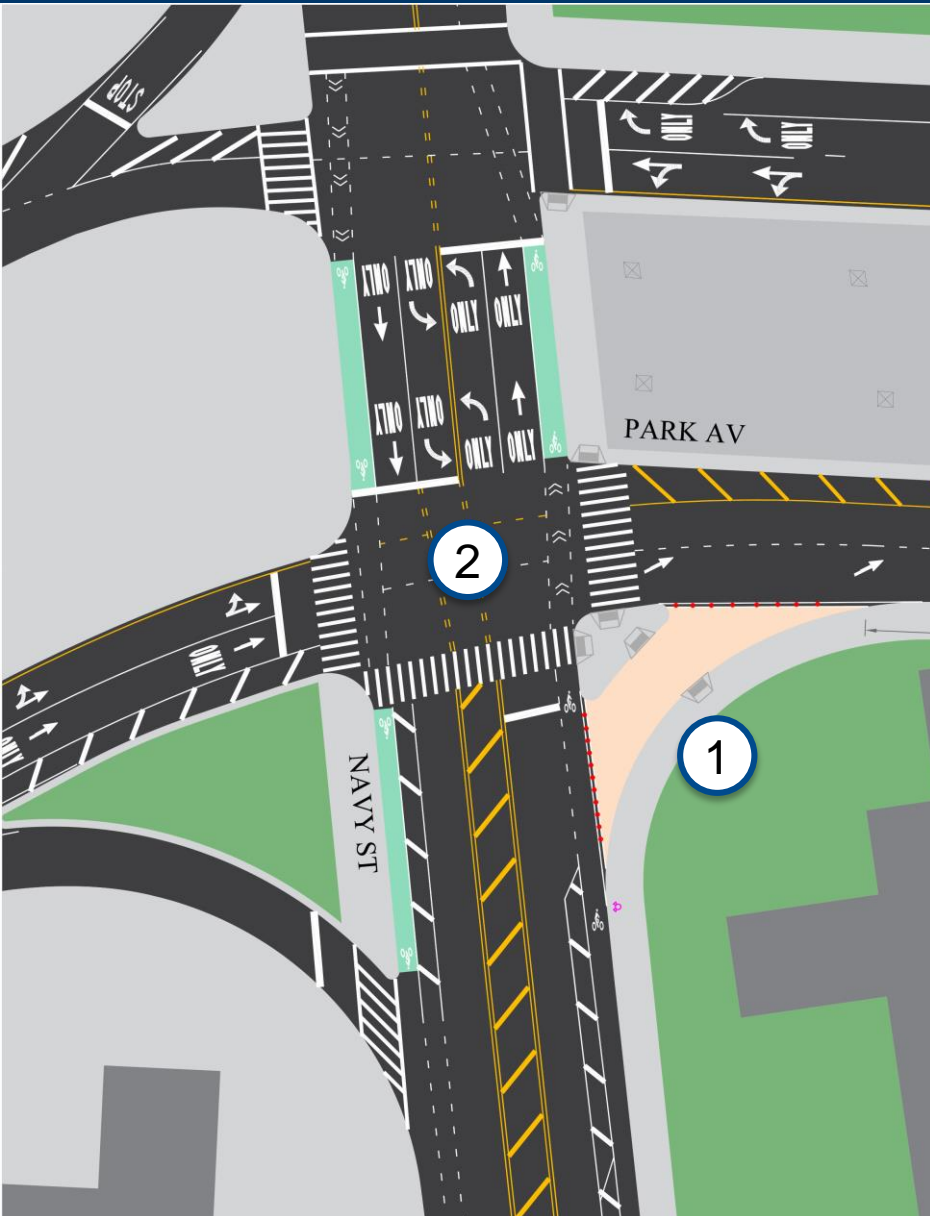
PARK AVE AND NAVY ST



1 Low volume slip lane from Navy St to Park Ave

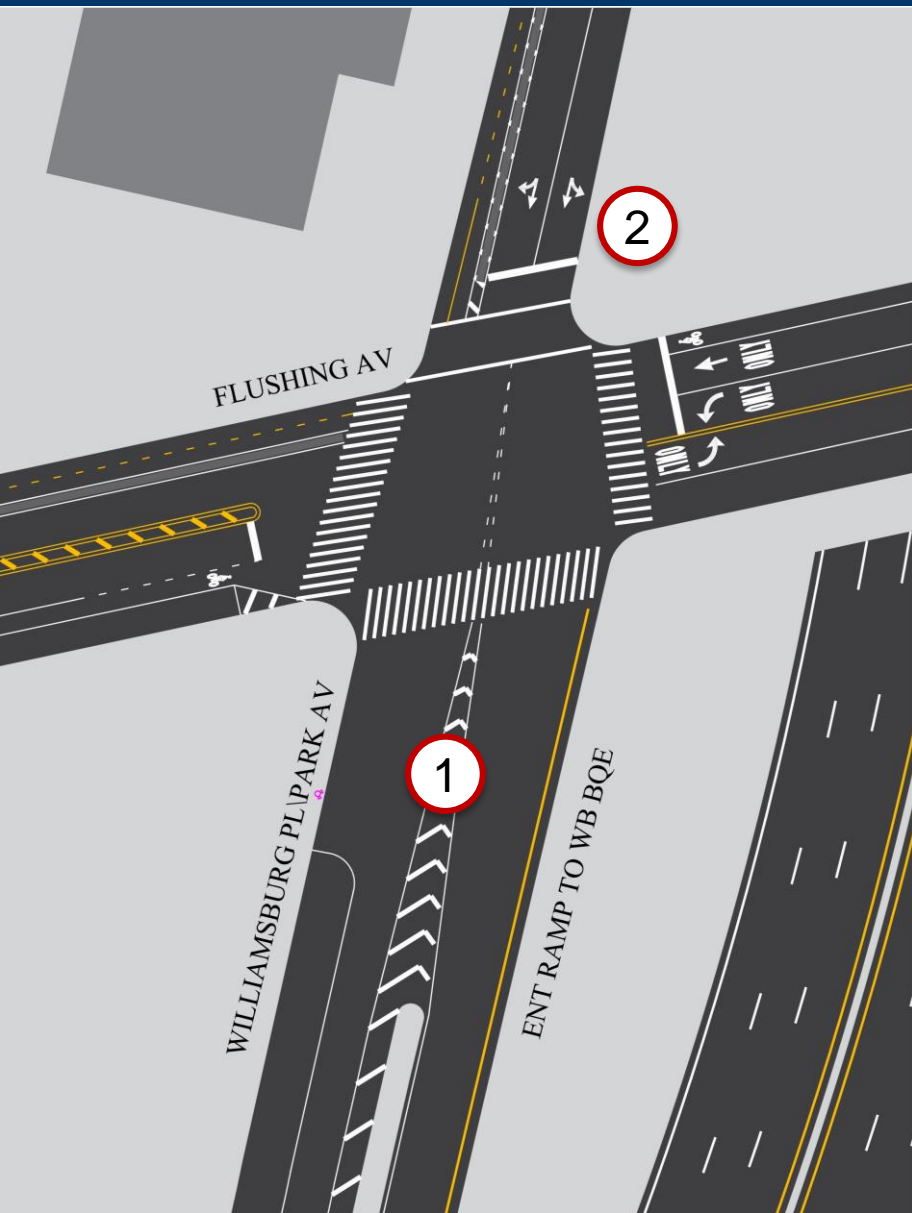


PARK AVE AND NAVY ST



- 1 Close slip lane in paint
- 2 Update markings and crosswalk to new standards (Hi-Vis crosswalks, green curbside bike lanes, updated lane designations)

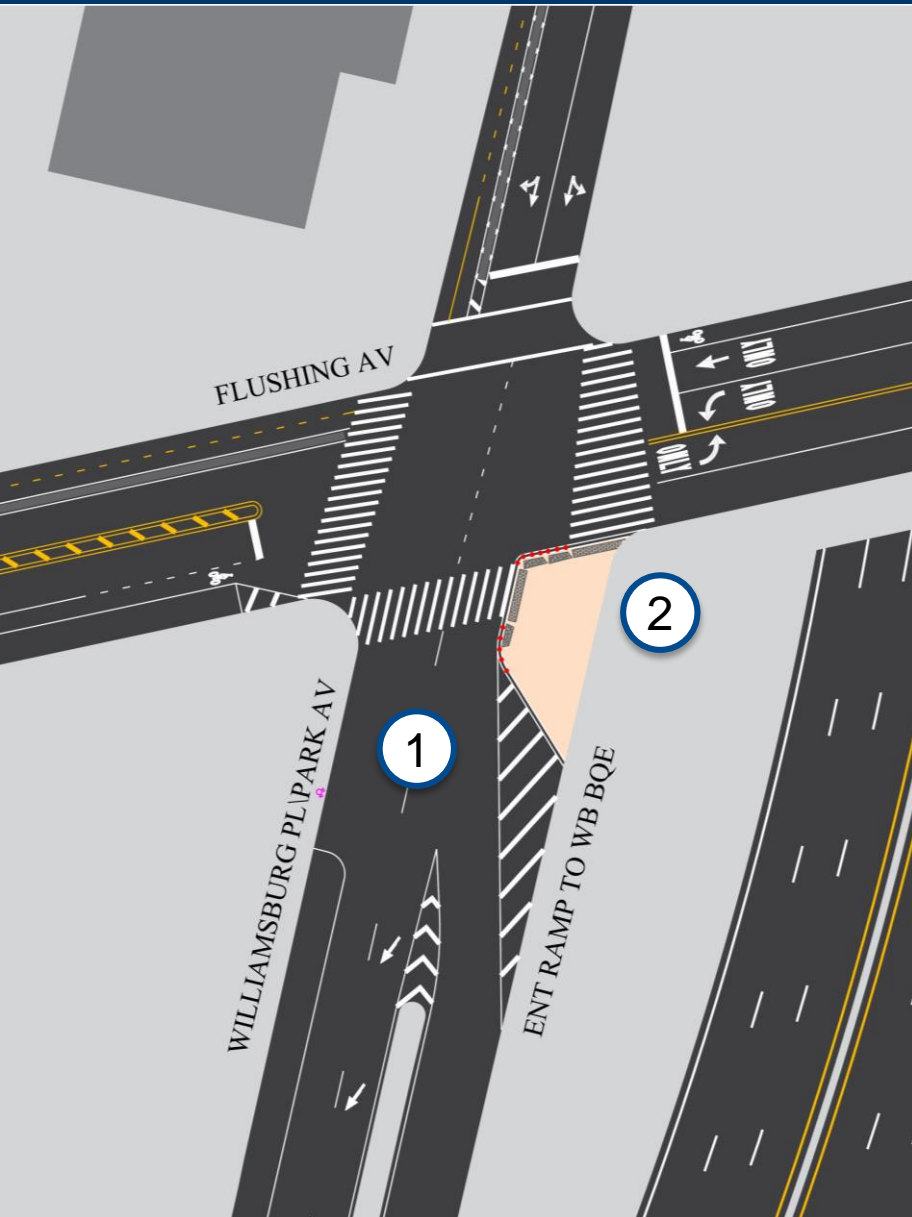
PARK AVE AND FLUSHING AVE



- 1 Decision to enter BQE must be made prior to intersection
- 2 Unclear lane designation leads to last minute merging in the intersection for drivers wanting to stay on Park Ave/Williamsburg Pl



PARK AVE AND NAVY ST



- 1 Remove decision point from intersection by allowing both lanes through to Park Ave
- 2 Paint curb extension in temporary materials (paint or gravel) shortening south crosswalk

THANK YOU!

Questions?



NYC DOT



NYC DOT



nyc_dot



NYC DOT