

HWD007K03

Park Avenue Pedestrian Safety Improvements at the Crossover

Brooklyn Community Board 2

December 21, 2023

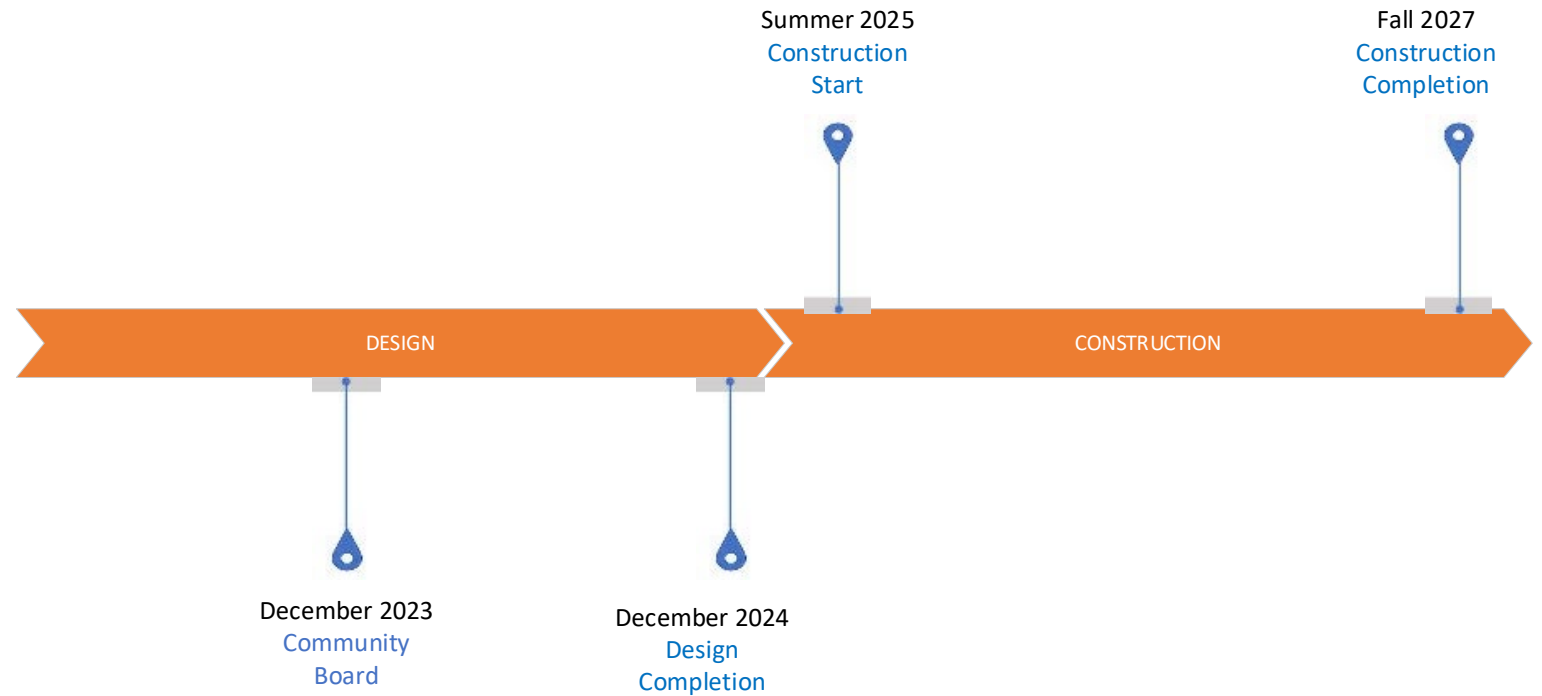


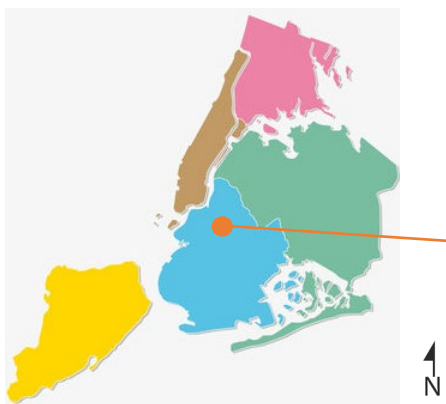
Project overview

Preliminary Construction Estimate

- DOT Work (\$13M)
- DEP Work (\$2M)

Current Stage- 40% Design completion





Location



Scope of Work

DOT

- New signalized design at Grand Ave
- New signalized thru street at Ryerson St
- Reorganized areas under BQE
- New curbs, sidewalks and ADA pedestrian ramps
- New trees, street lighting, and furnishings throughout project

DEP

- Replacement of distribution water main (8", 12" and 20")

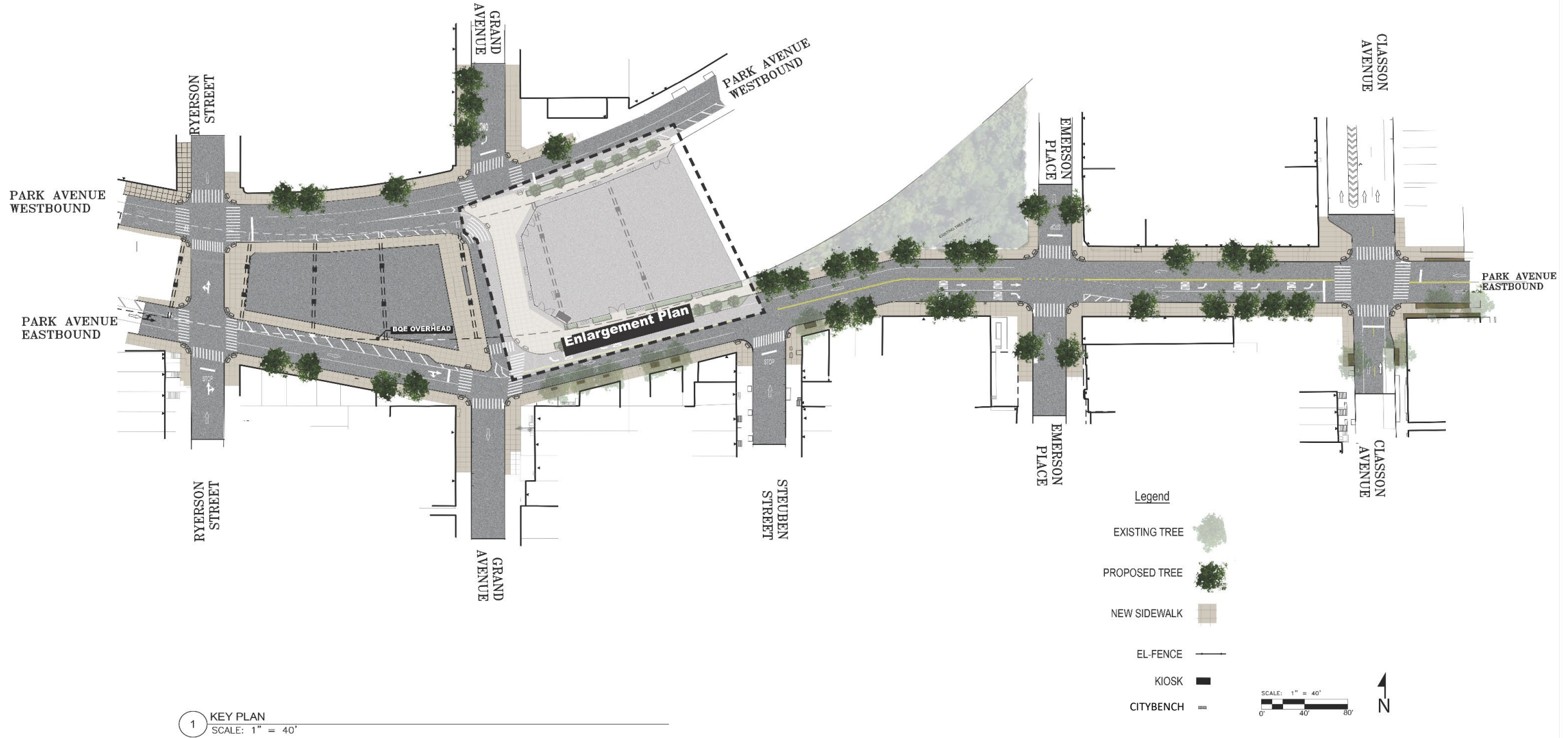
Project Background



Myrtle Avenue BID 2012 Proposal for the Crossover

- Location was identified in the 2012 Park Avenue Plan created by the Myrtle Avenue BID
- Plan identified improvements for the full Park Avenue Corridor
- DOT implemented in house improvements to the corridor in 2014 and 2018
- An additional capital project (HWKDTBK) is in design for the intersection of Park Avenue and Navy St at the opposite end of the corridor

Project Area Map





Pedestrian Improvements

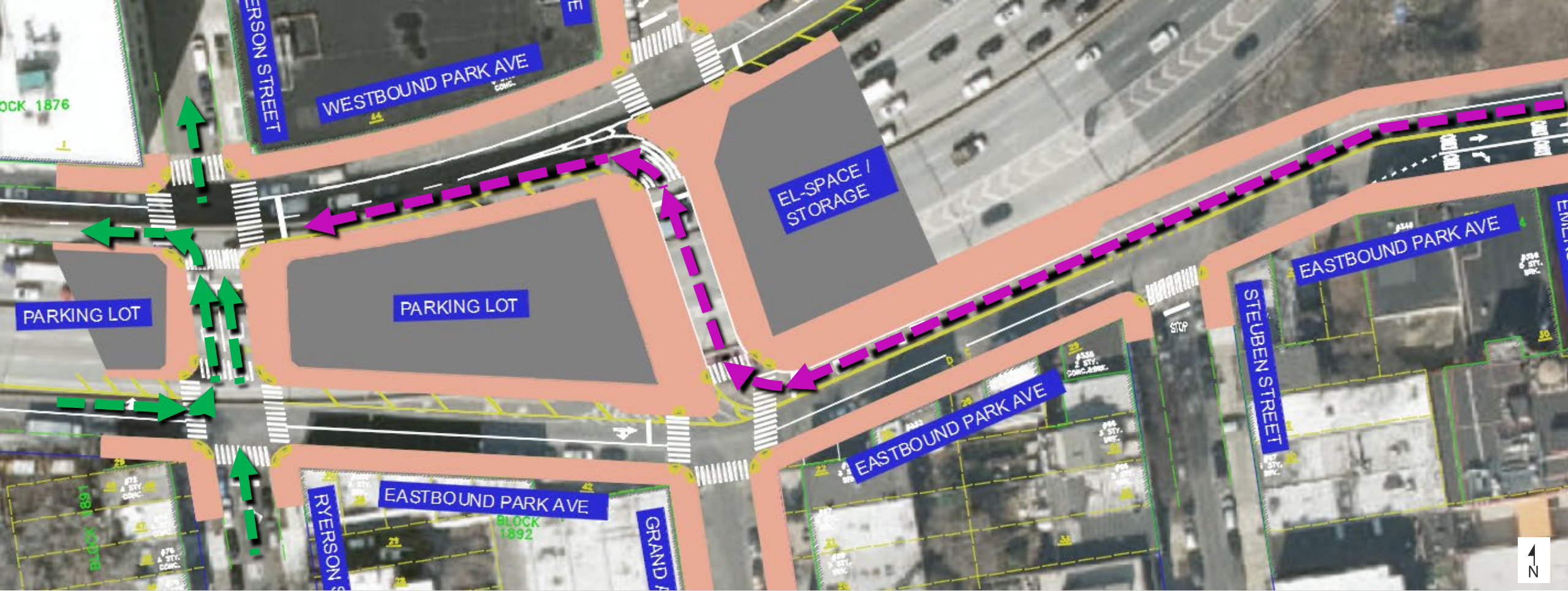
New sidewalks/crossings



Existing: No crosswalk across Park Ave between Hall St and Classon Ave (1,300' or ¼ mile)



Proposed: New Crosswalks at Ryerson Street and Grand Ave
New Sidewalk on north side of Park Avenue between Emerson Place and Grand Ave



Traffic Patterns Changes



New thru street at Ryerson



New geometry for WB Park Avenue traffic

Under the Elevated Spaces

- Existing spaces are informal parking areas with frequent sidewalk parking and long-term commercial vehicle storage
- Proposal consolidates parking to expanded lot between Ryerson and Grand Avenue and creates new programming space between Grand and Steuben Street

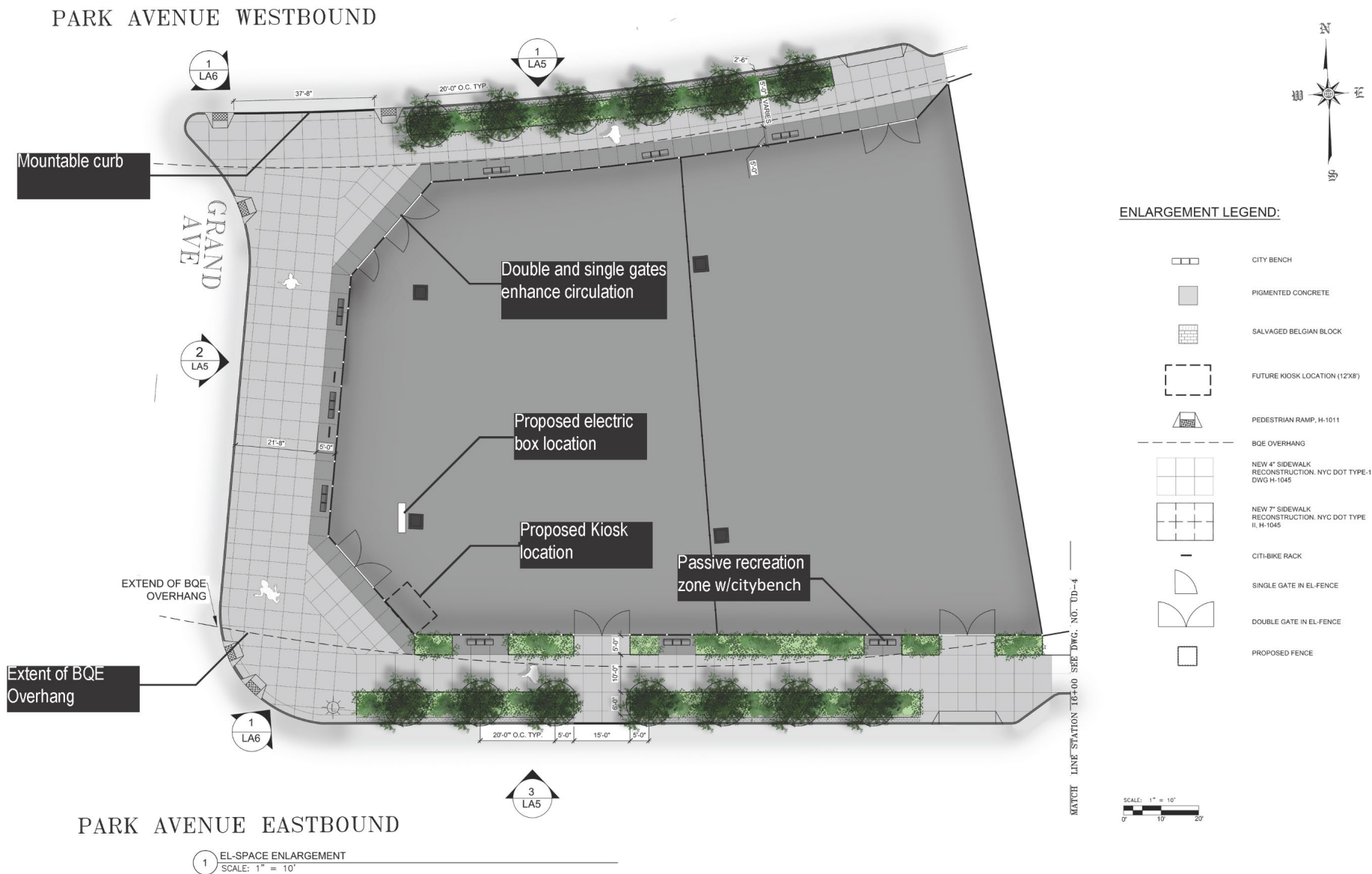


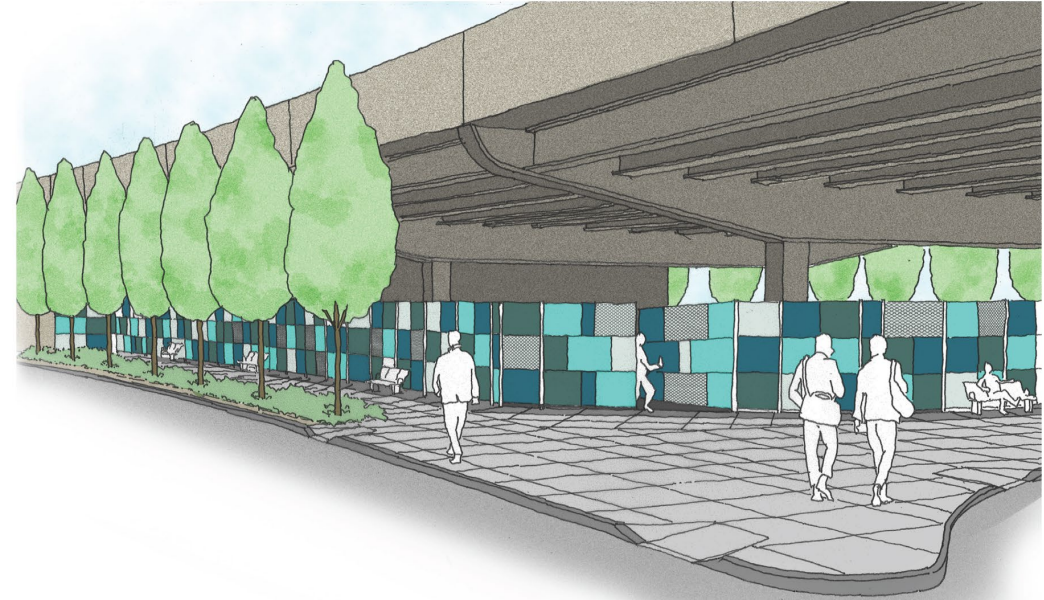
New Under the Elevated Spaces

- Current capital project creates the space/sets the geometry, future improvements could repurpose portions of the space to meet changing community needs in coordination with other agencies (DPR, SBS, etc)
- Space will function as storage for DOT's citywide Partnerships and Programing activities as well as living laboratory for new DOT pilots in coordination with nearby institutions (Navy Yard, Pratt, etc)



Proposed Landscaping Plans at the Crossover





Existing and Proposed Conditions at
the Corner of
Grand Ave and Park Ave
Westbound

- Wide sidewalk
- El Fence area
- New trees



Existing and Proposed Conditions
at the Corner of
Grand Ave and Park Ave
Eastbound

- Wide sidewalk
- El Fence area
- New trees

Existing and Proposed Conditions at the Intersection of Grand Ave and Park Ave Eastbound Viewing North



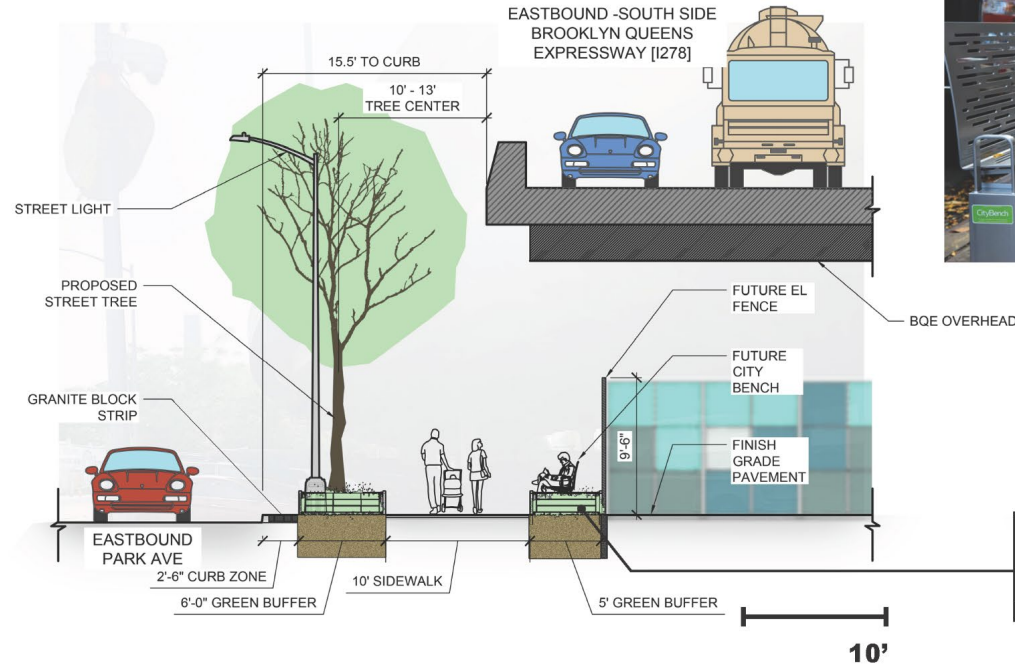
Existing and Proposed Conditions at the Intersection of Ryerson St and Park Ave Eastbound



Existing and Proposed Conditions at the Intersection of Emerson St and Park Ave Eastbound



Proposed Sections and Elevations



CITYBENCH



EL-FENCE



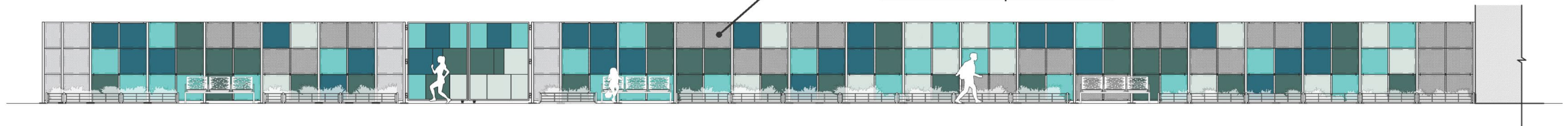
LANDSCAPE FENCE

Planting zones encom-
passed with landscape
fence

South elevation better defines pedestri-
an space outside of the el-fence with a
seating/planting zone, 10' sidewalk, and
landscape zone.

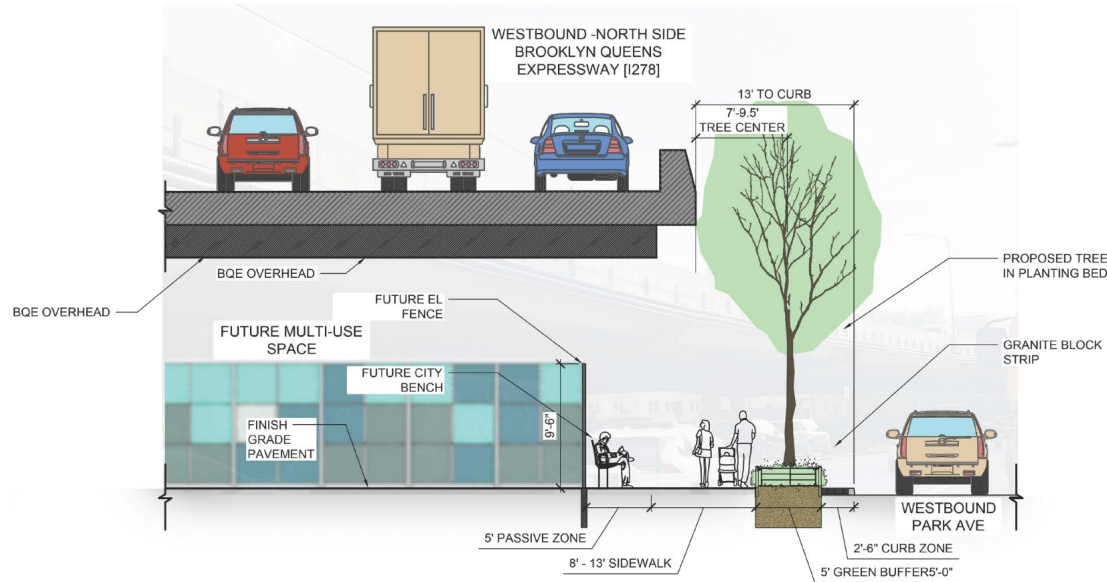
3 EASTBOUND BQE / SOUTH SIDE/ PARK AVE SECTION
SCALE: 3/16" = 1'

El-Fence patterns can be
used to emphasize visibility
with chain link panels.



3 SOUTH EL-FENCE ELEVATION
SCALE: 3/16" = 1'

Proposed Sections and Elevations



1 WESTBOUND BQE / NORTH SIDE/ PARK AVE SECTION
SCALE: 3/16" = 1'



CITYBENCH

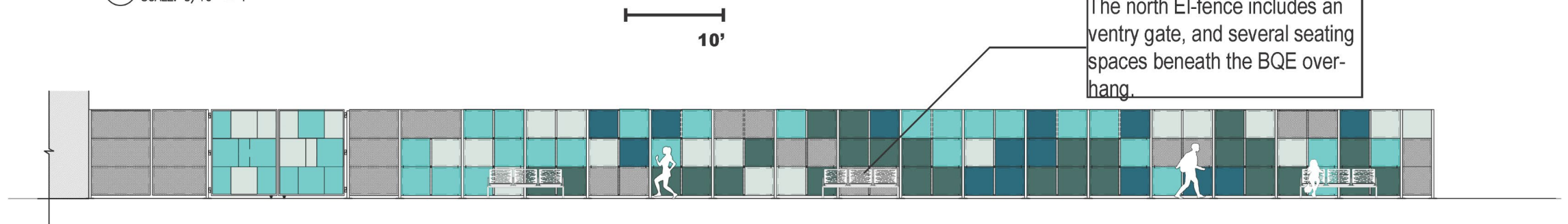


EL-FENCE



LANDSCAPE FENCE

North elevation introduces a new planting strip on the outer curb with columnar trees.

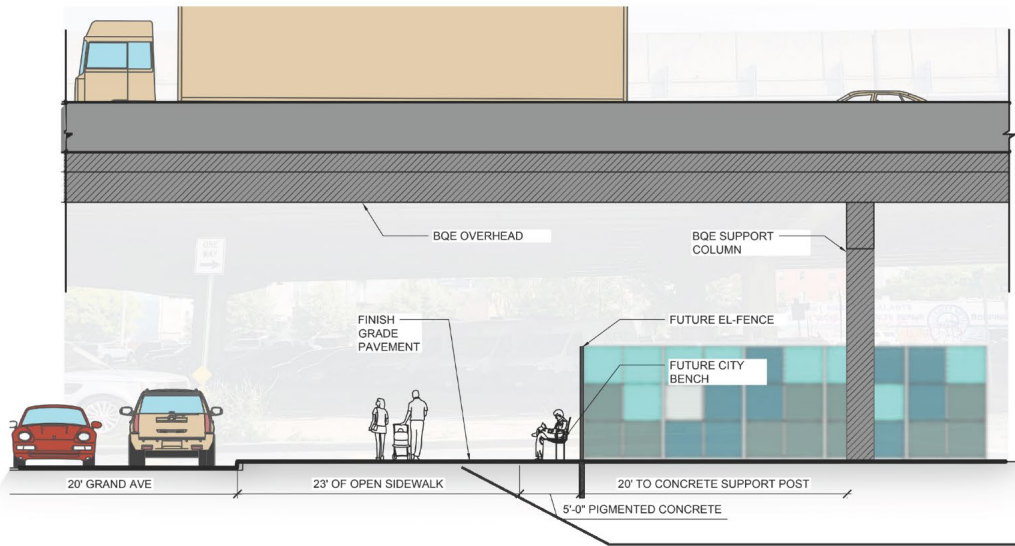


The north EL-fence includes an entry gate, and several seating spaces beneath the BQE overhang.

1 NORTH EL-FENCE ELEVATION
SCALE: 3/16" = 1'

8'

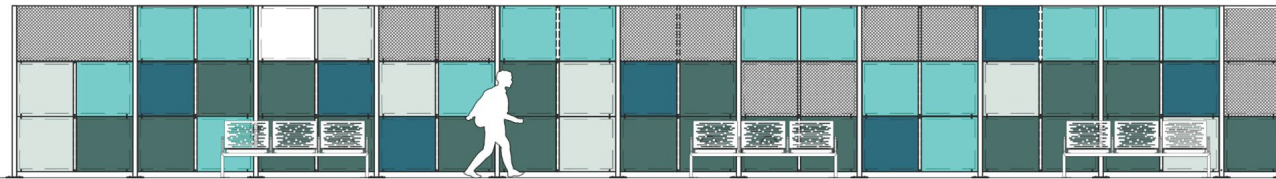
Proposed Sections and Elevations



The west elevation is defined by the road realignment, and a larger pedestrian zone.

2 WEST SIDE / GRAND AVE SECTION
SCALE: 3/16" = 1'

10'



2 WEST EL-FENCE ELEVATION
SCALE: 3/16" = 1'

8'



EL-Kiosk has been proposed to provide onsite concessions during events.

EL-KIOSK

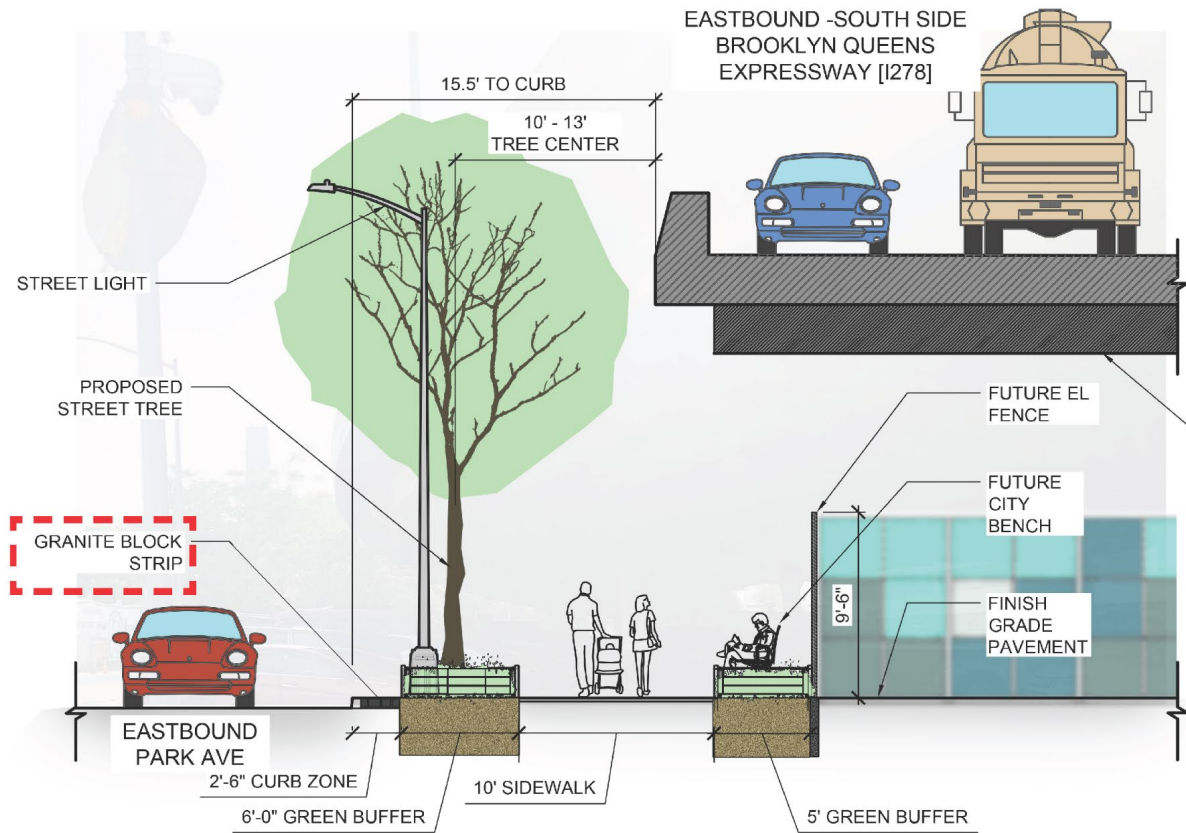


EL-FENCE



CITYBENCH

Sustainable Salvaging



3

EASTBOUND BQE / SOUTH SIDE/ PARK AVE SECTION
SCALE: 3/16" = 1'



ONSITE COBBLESTONE RESOURCE



Thank you....