



OCEAN PKWY IN FRONT OF CONEY ISLAND HOSPITAL (HWPEDSF5 LOCATION 7)

Presentation to Community Board 13 joint Transportation,
Sanitation, Environmental Committee

February 21, 2018

BACKGROUND

- Project initiated by NYC Transit in coordination with NYC Department of Transportation
- Bus stop: B1, B4, B36
- Concrete accessibility ramp added in Fall 2018
- Adjacent to Coney Island Hospital



Existing Conditions

1

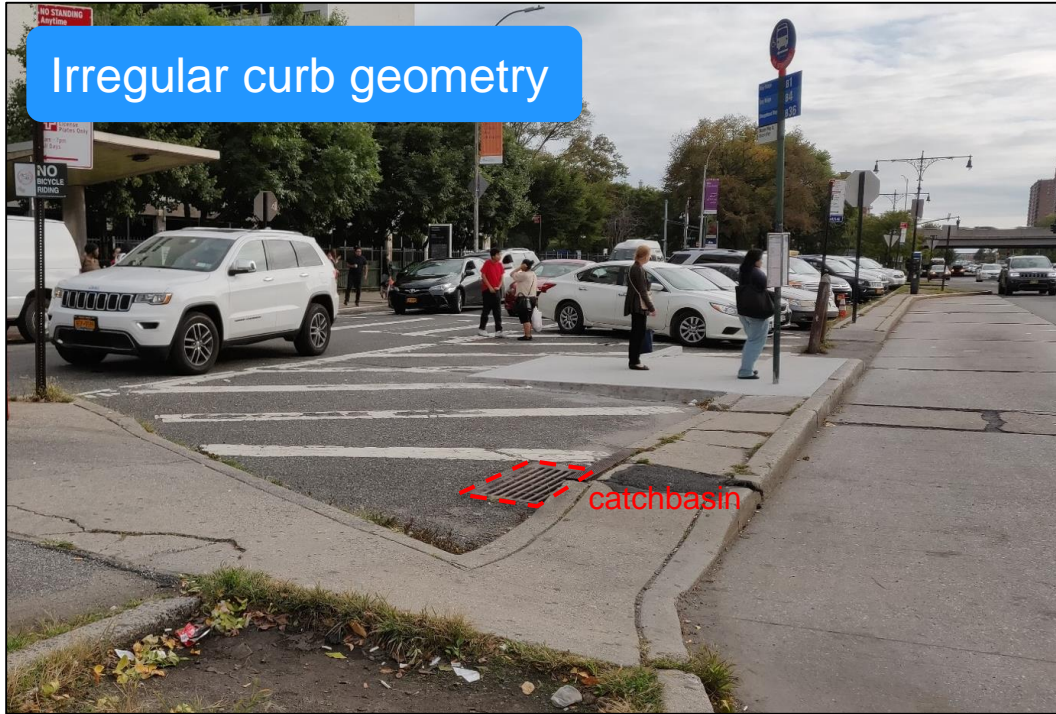
EXISTING CONDITIONS

Substandard sidewalk width



EXISTING CONDITIONS

Irregular curb geometry



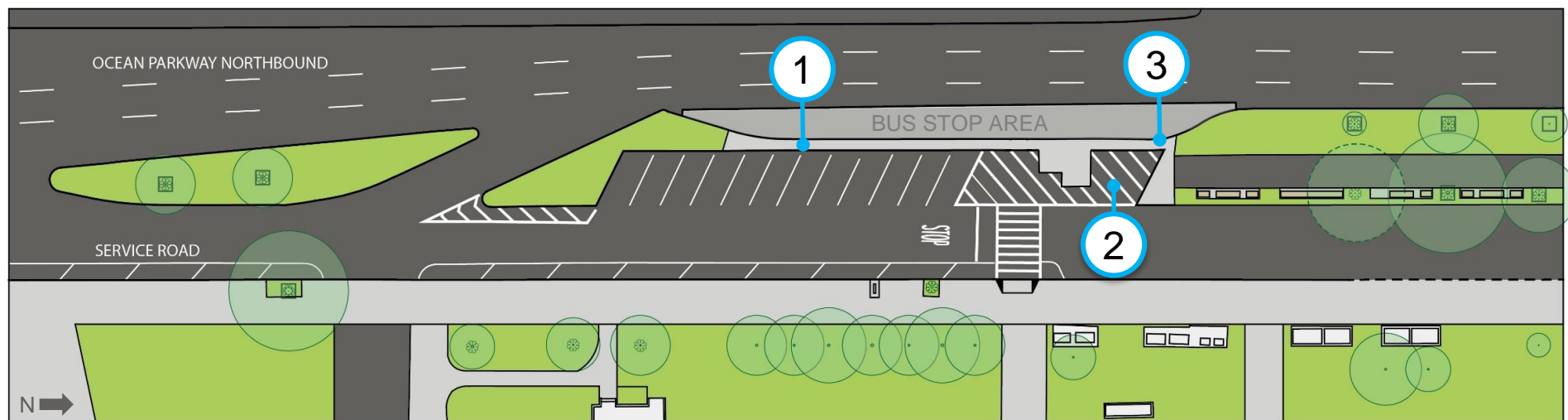
Substandard bus stop waiting area

EXISTING CONDITIONS

1 Substandard sidewalk width

2 Substandard bus stop waiting area for pedestrians

3 Irregular curb geometry



Proposed Conditions

2

DOT TOOLKIT

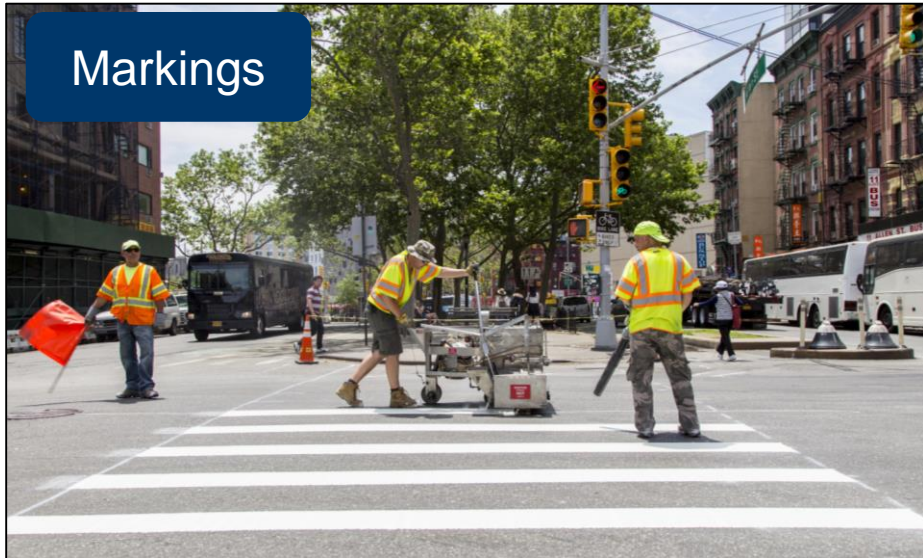
Concrete
Extension



Leaning
Bar



Markings



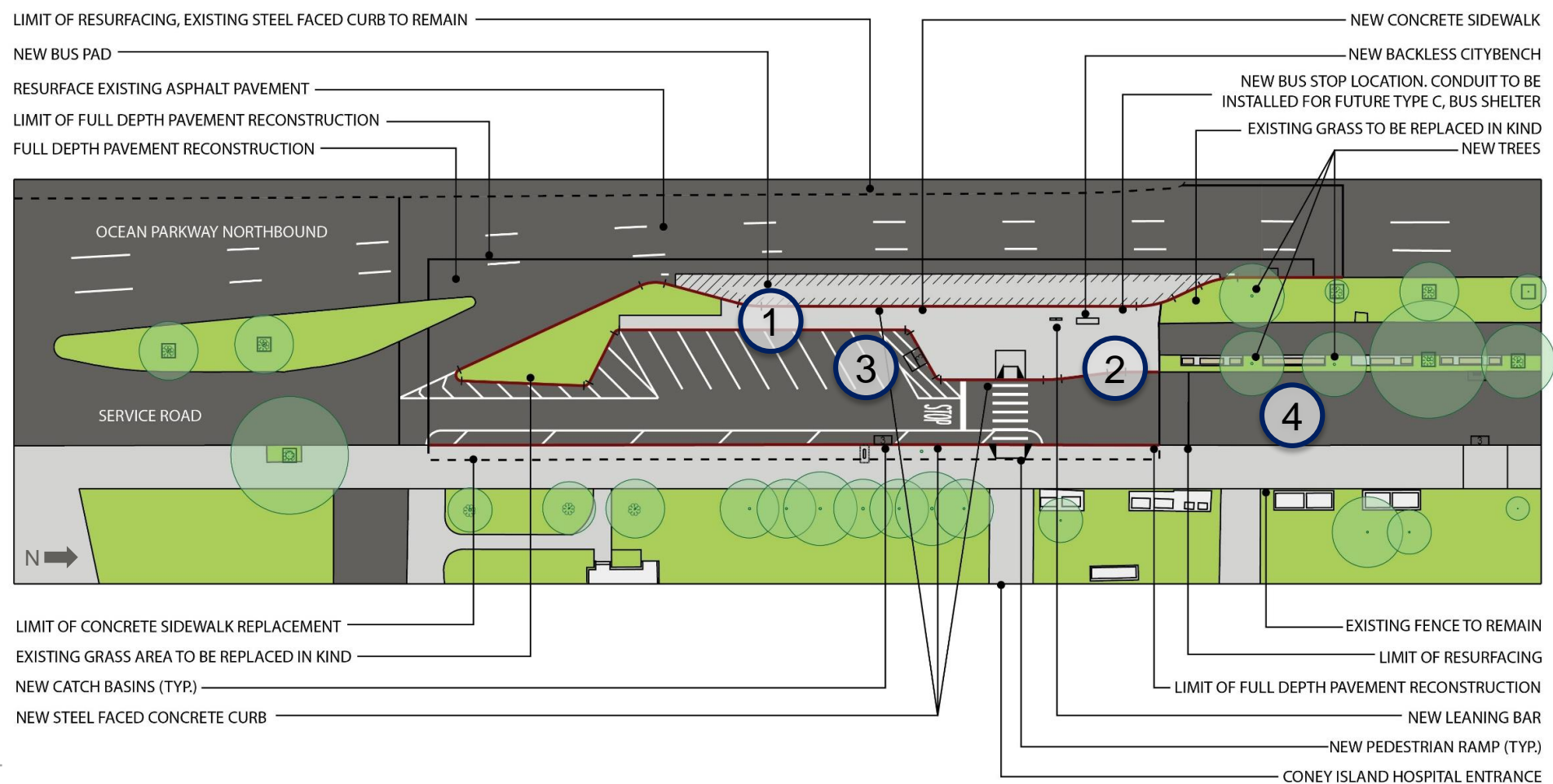
CityBench



PROPOSED CONDITIONS

- ① Expand sidewalk width to 8 feet
- ② Build out channelization for bus stop waiting area

- ③ Normalize geometry to allow proper drainage and street sweeping
- ④ Add 3 new trees



PROPOSED CONDITIONS



Existing



Proposed

PROJECT BENEFITS



- Safe and accessible bus stop
- Expanded bus stop waiting area
- Accessible sidewalk
- Reduced ponding and debris

THANK YOU!

Questions?



NYC DOT



NYC DOT



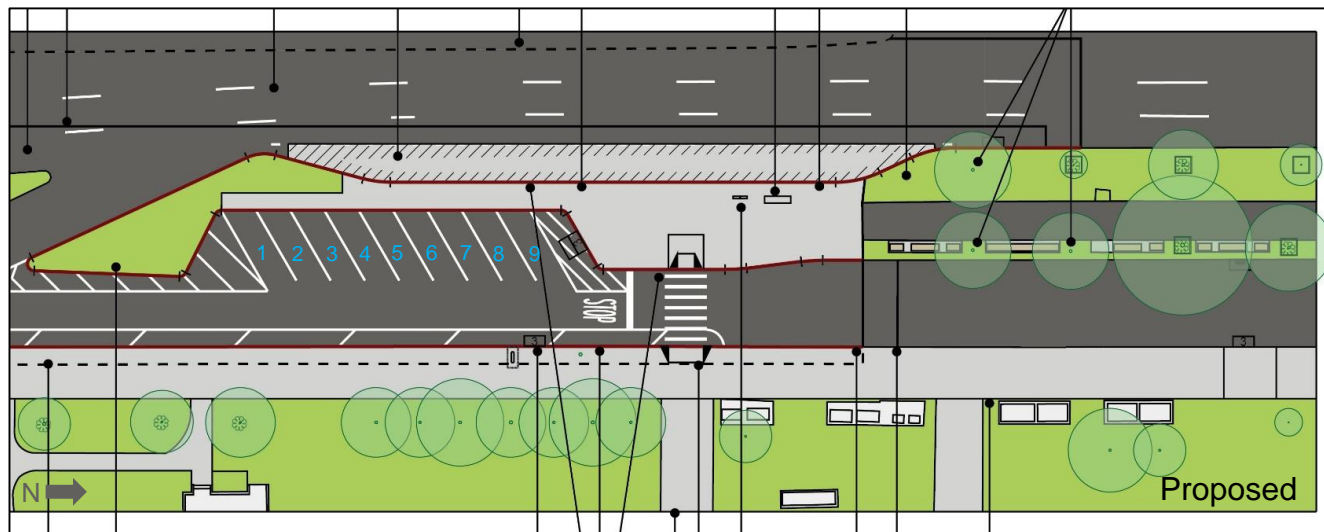
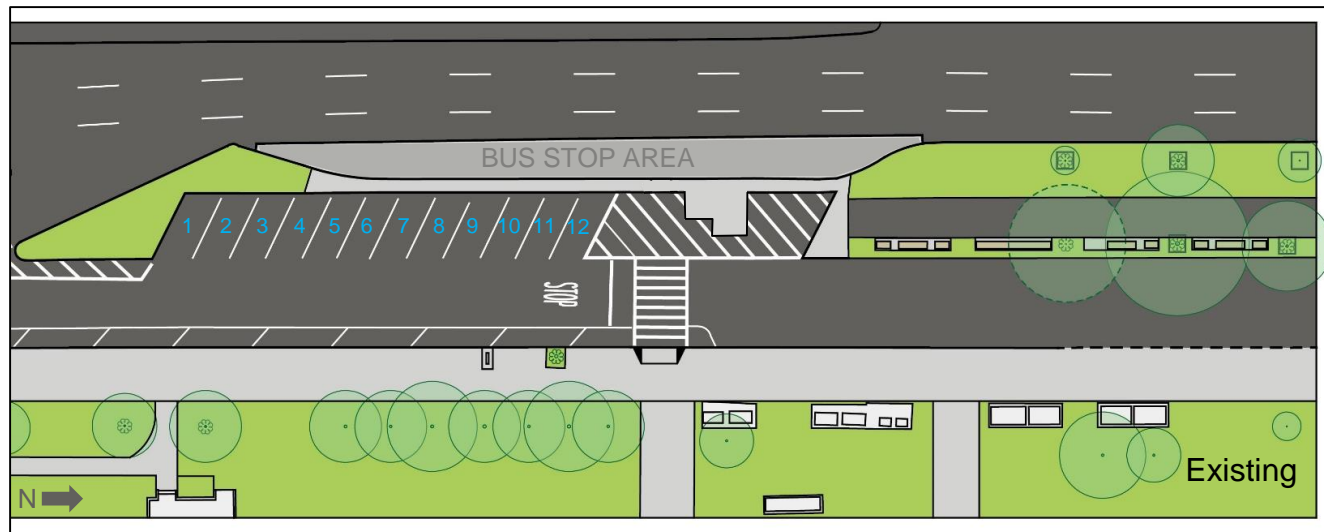
nyc_dot



NYC DOT

PARKING

Metered Parking: Net -3



TREES

Trees: Net +2

