



# Nostrand Avenue

## Madison Pl to Quentin Road

School Safety Improvements

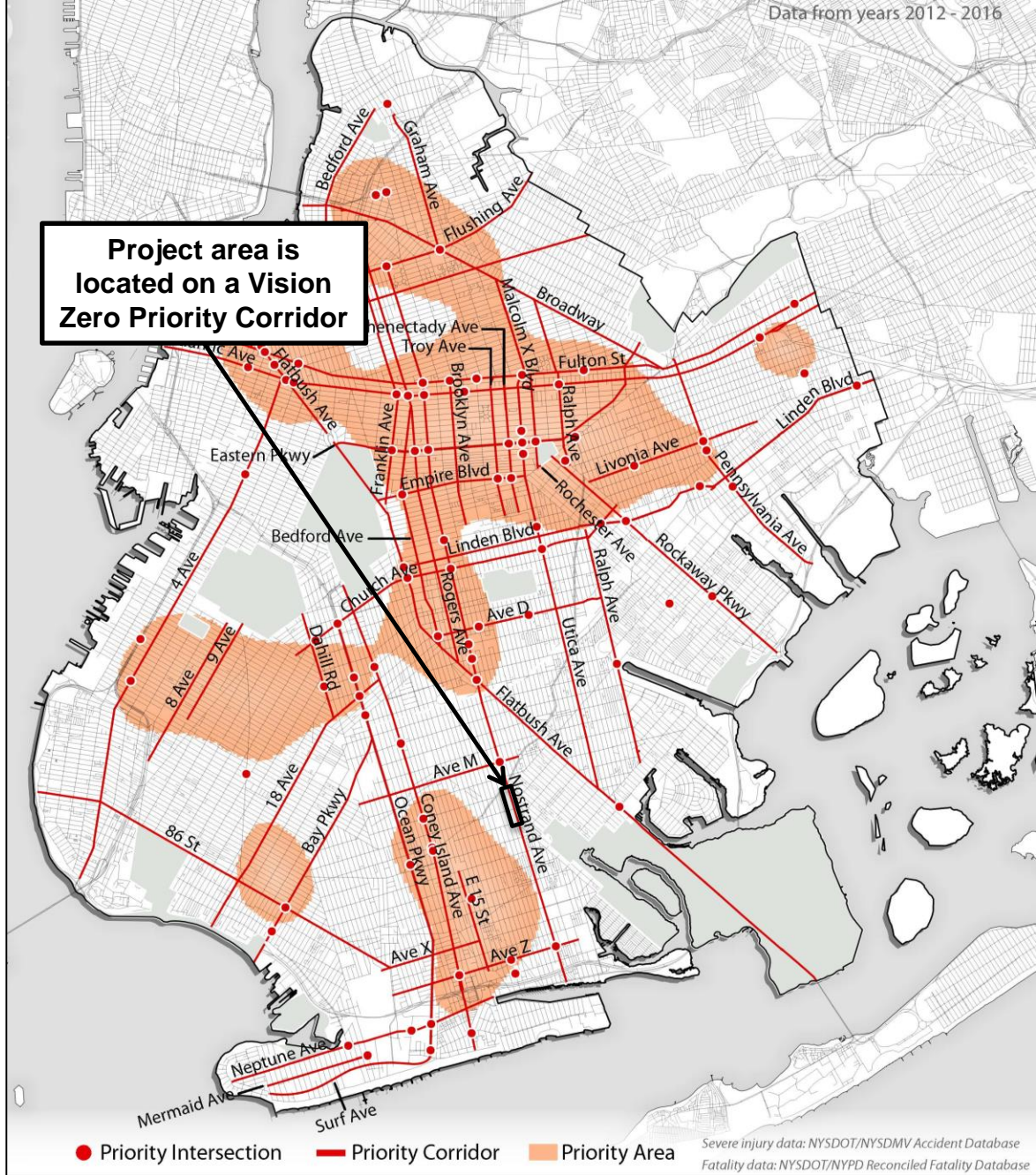
Presentation | May 2020



# Nostrand Ave (Marine Pkwy to Quentin Rd)

## Vision Zero Priority

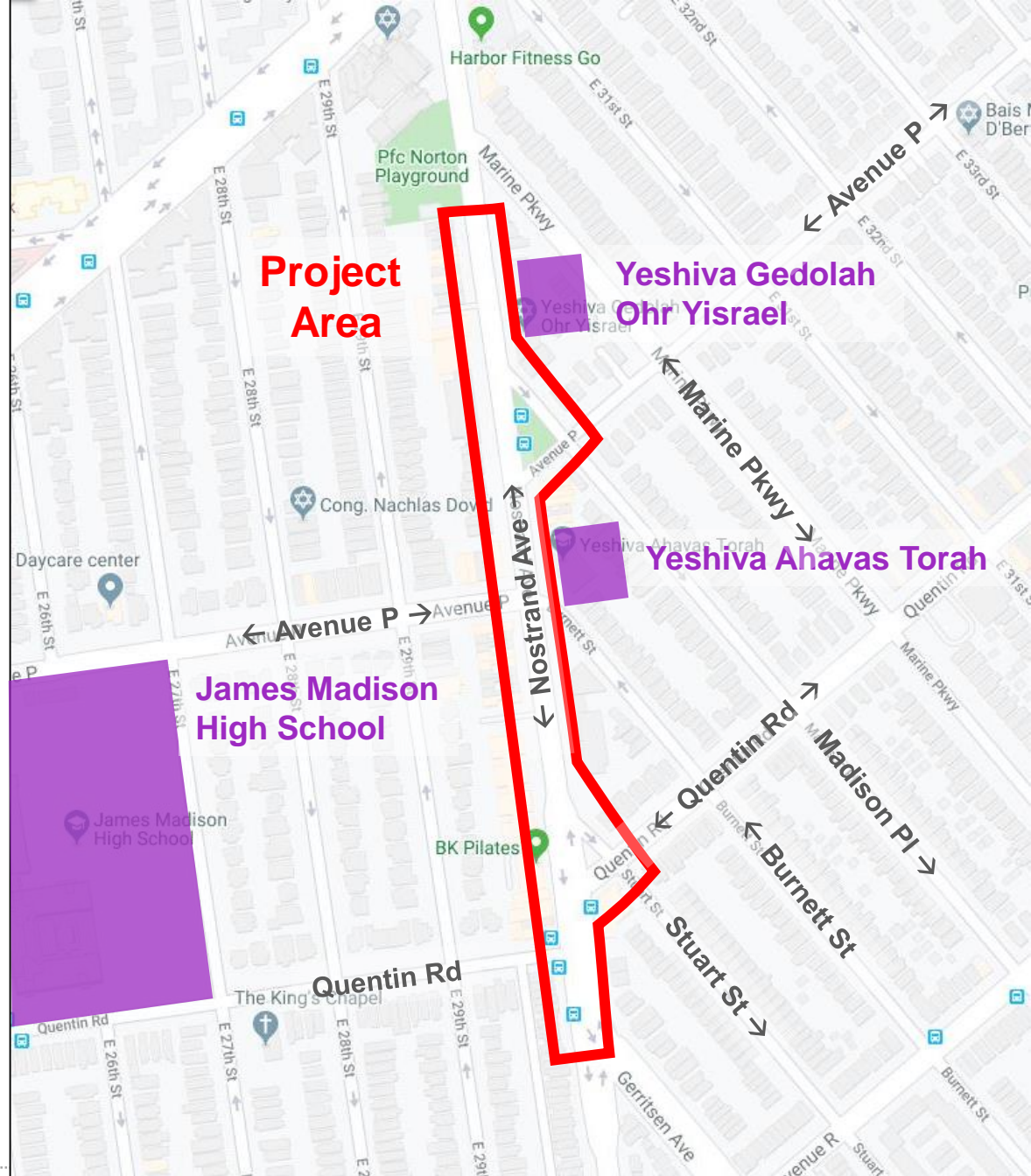
- Vision Zero
- Multi-agency effort to reduce traffic fatalities in NYC
- Borough Action Plans released in 2015
- Priority Intersections, Corridors, and Areas identified for each borough
- Nostrand Ave is a Vision Zero Priority Corridor



# Nostrand Ave (Marine Pkwy to Quentin Rd)

## Project Area

- The Nostrand Ave corridor is a wide, two-way street with high traffic volumes
- Project area used by students accessing Yeshiva Gedola Ohr Yisrael, Yeshiva Ahavas Torah, and James Madison High School
- Vehicles make wide, fast left turns onto southbound Madison Pl and Stuart Street
- Long crossings across skewed intersections
- Residential and light commercial land uses
- B44 runs along Nostrand Ave, access to B44 SBS at Kings Hwy and Ave R





# Nostrand Ave (Marine Pkwy to Quentin Rd)

## Safety Data, 2013-2017

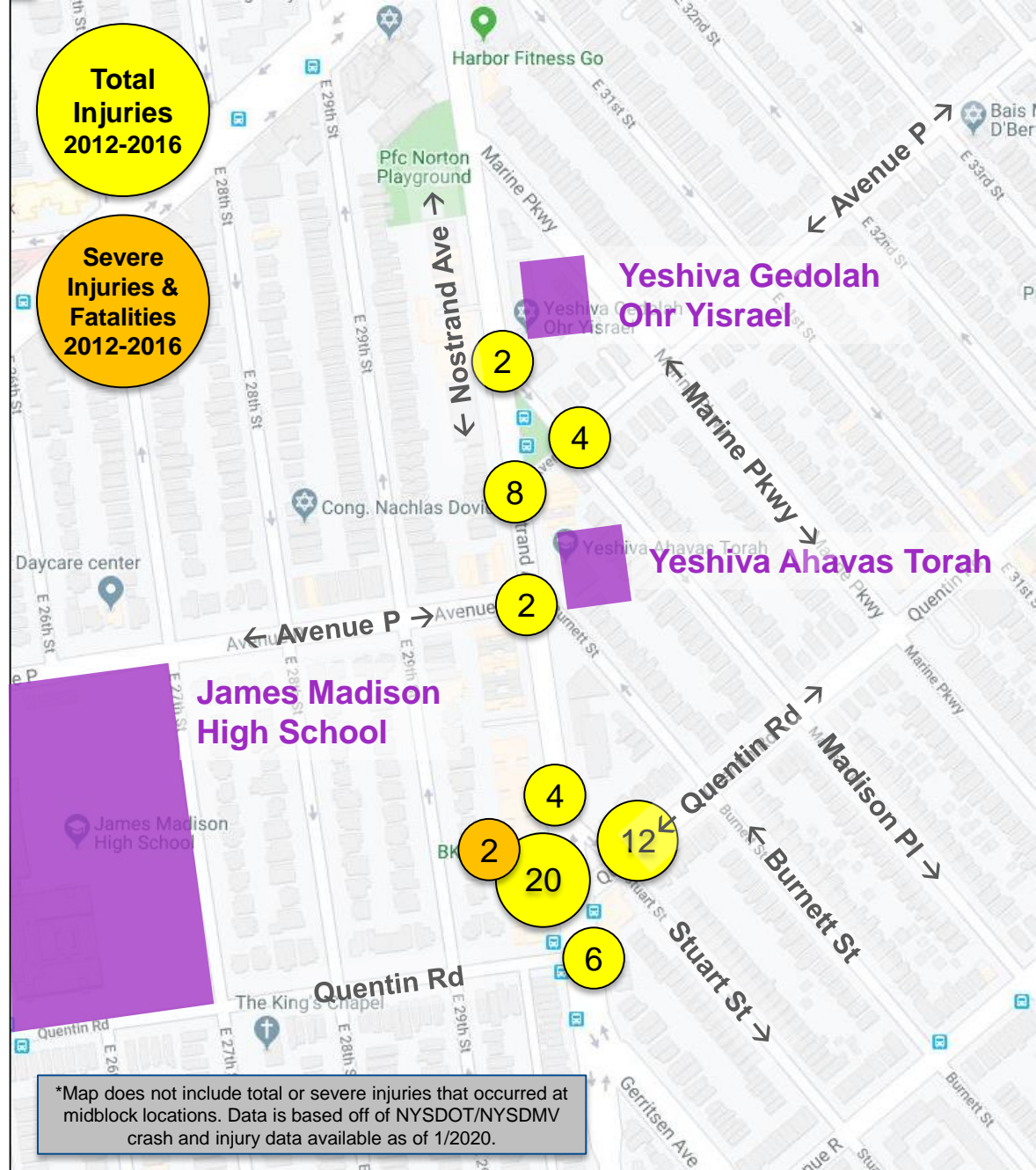
- 74 total injuries
- 2 severe injuries
- 16% of those injured were pedestrians
- School-aged pedestrian struck by a vehicle at Nostrand Ave & Madison Pl in 2017

Nostrand Ave - Marine Pkwy to Quentin Rd, BK  
Injury Summary, 2013-2017 (5 Years)

	Total Injuries	Severe Injuries	Fatalities	KSI
Pedestrian	12	1	0	1
Bicyclist	4	0	0	0
Motor Vehicle Occupant	58	1	0	1
Total	74	2	0	2

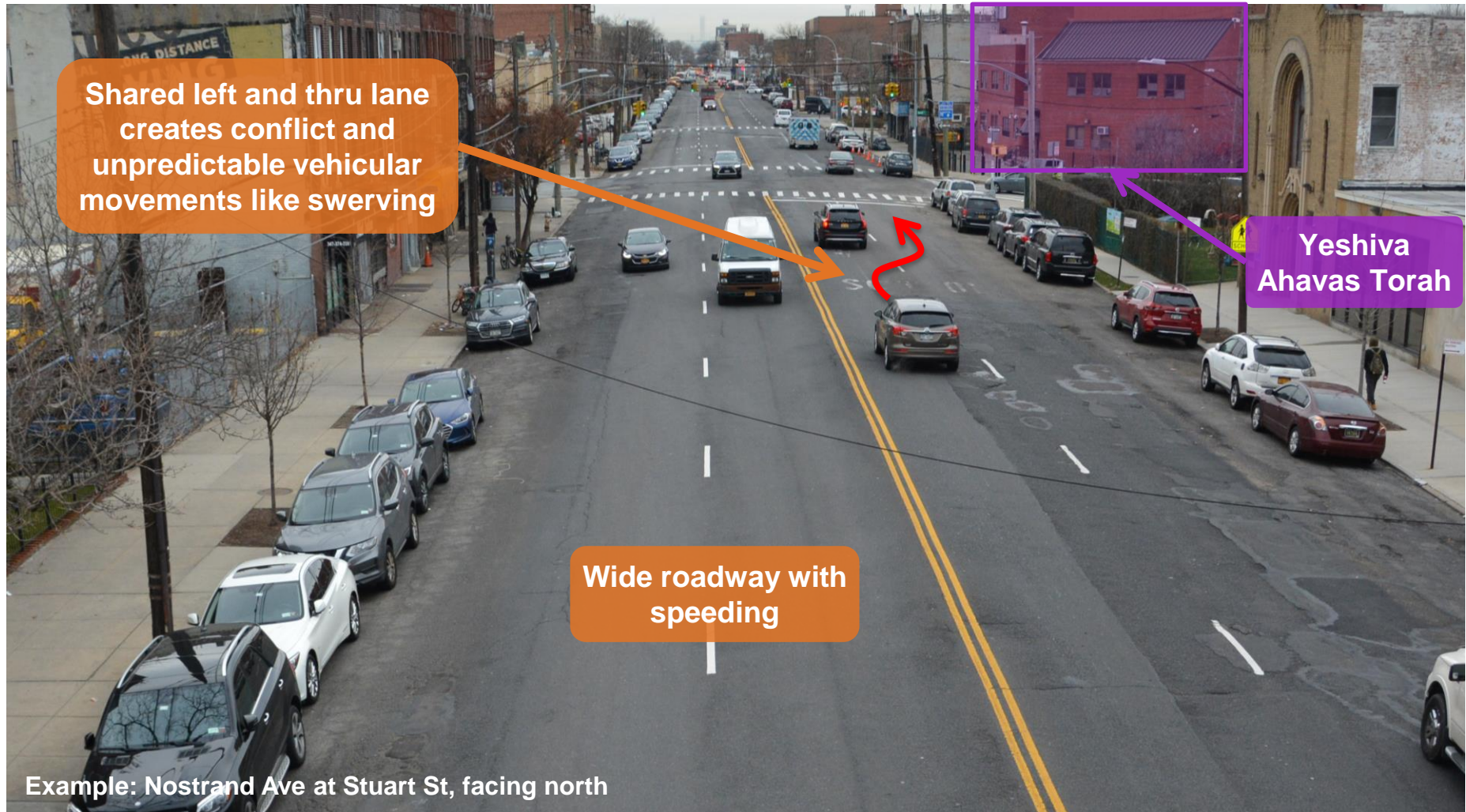
Fatalities, 01/01/2013-1/20/2020 : None

Source: Fatalities: NYCDOT  
Injuries: NYSDOT  
KSI: Persons Killed or Severely Injured



# Nostrand Ave (Madison Pl to Quentin Rd)

## Existing: Wide Roadway Encourages Speeding

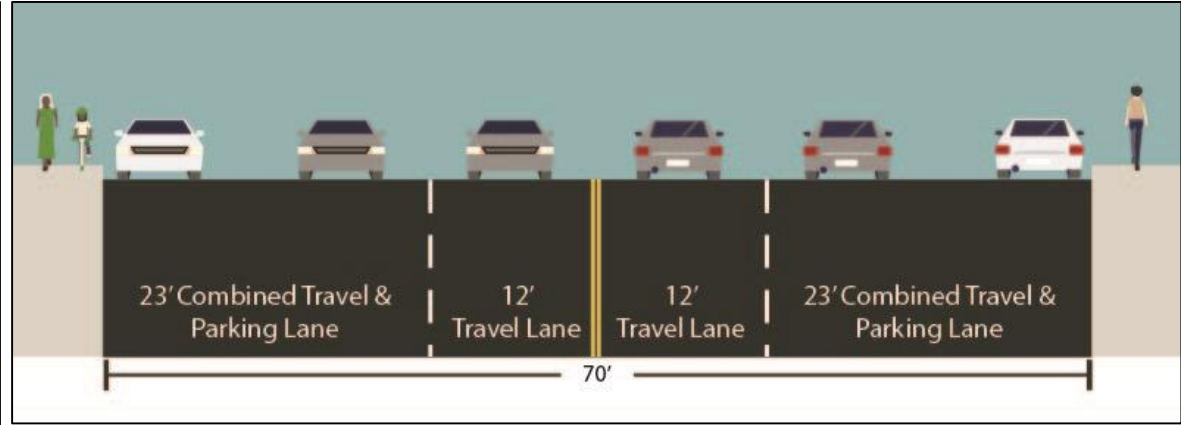




# Nostrand Ave (Madison Pl to Quentin Rd)

## Proposal: Organize Wide Roadway

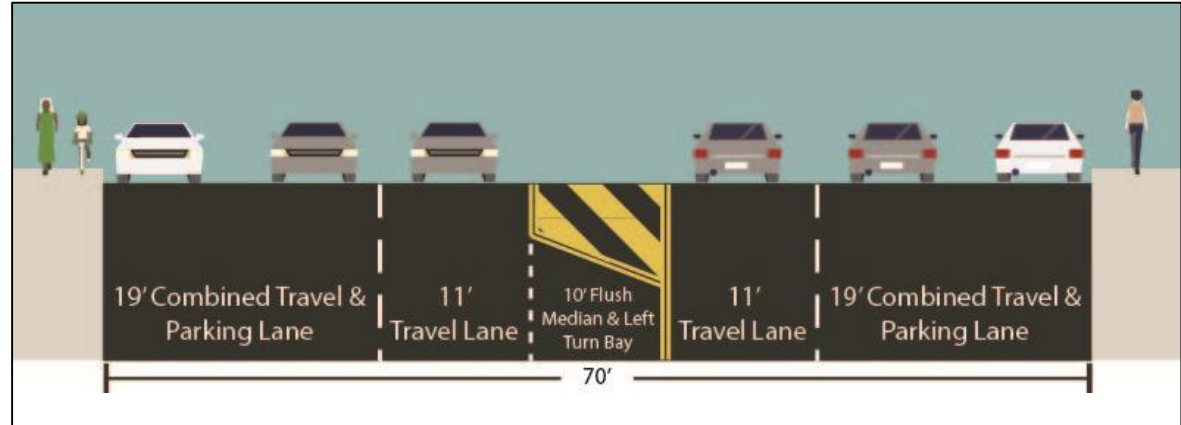
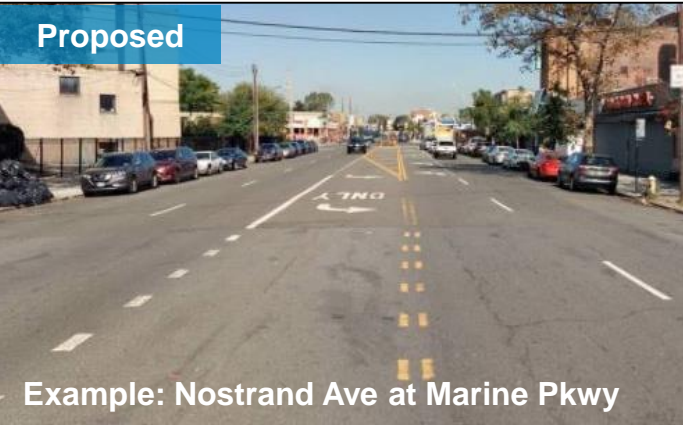
Existing



Narrower travel lanes discourage speeding and reduce unpredictable vehicular movements

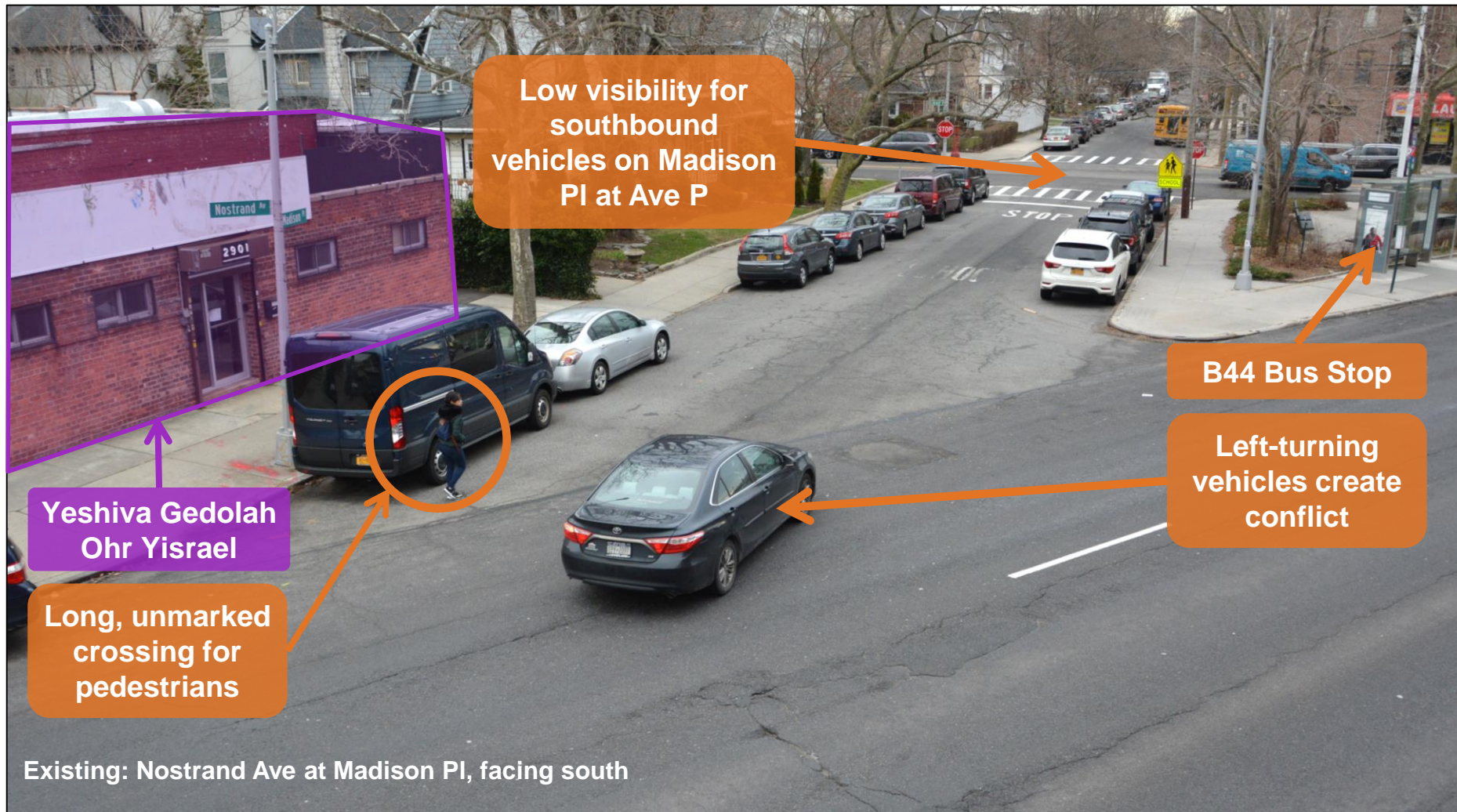
Flush painted median and left turn bays separate and organize traffic movements

Proposed



# Madison PI (Nostrand Ave to Ave P)

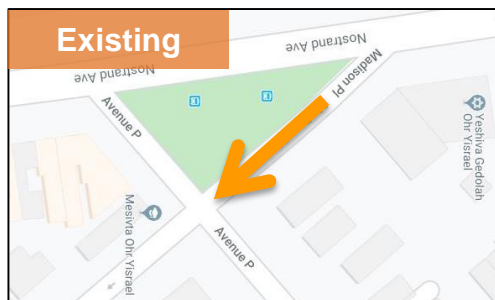
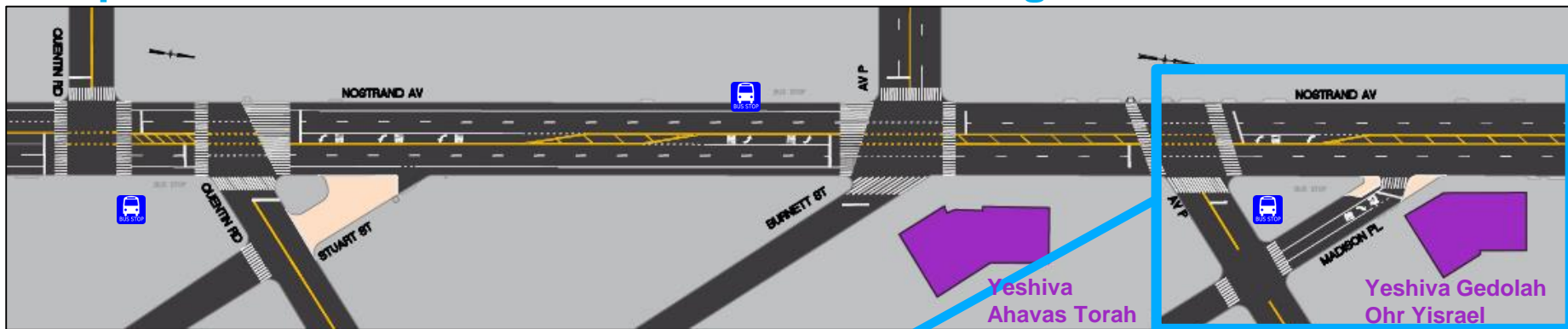
## Existing: Long, Unprotected Crossing





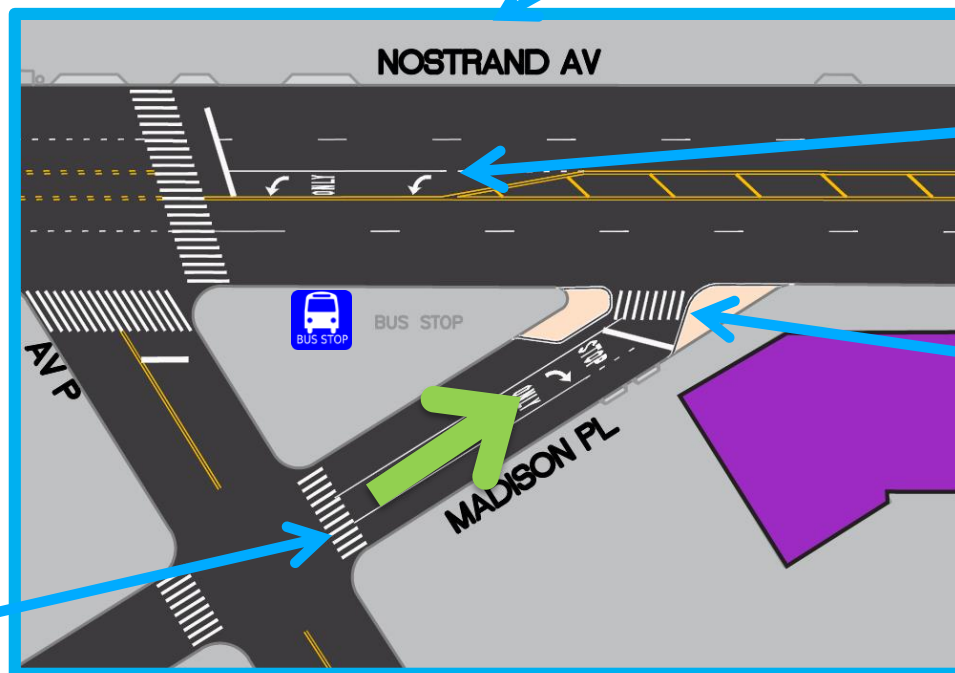
# Madison Pl (Nostrand Ave to Ave P)

## Proposal: Reverse Street and Shorten Crossing



Reversing Madison St to be northbound prevents fast, wide angle left turns from Nostrand Ave

Conversion reduces conflict at low-visibility intersection



Left-turning vehicle movements diverted into the left turn bay

Painted curb extensions shorten crossings and improve visibility for pedestrians



# Madison PI (Nostrand Ave to Ave P)

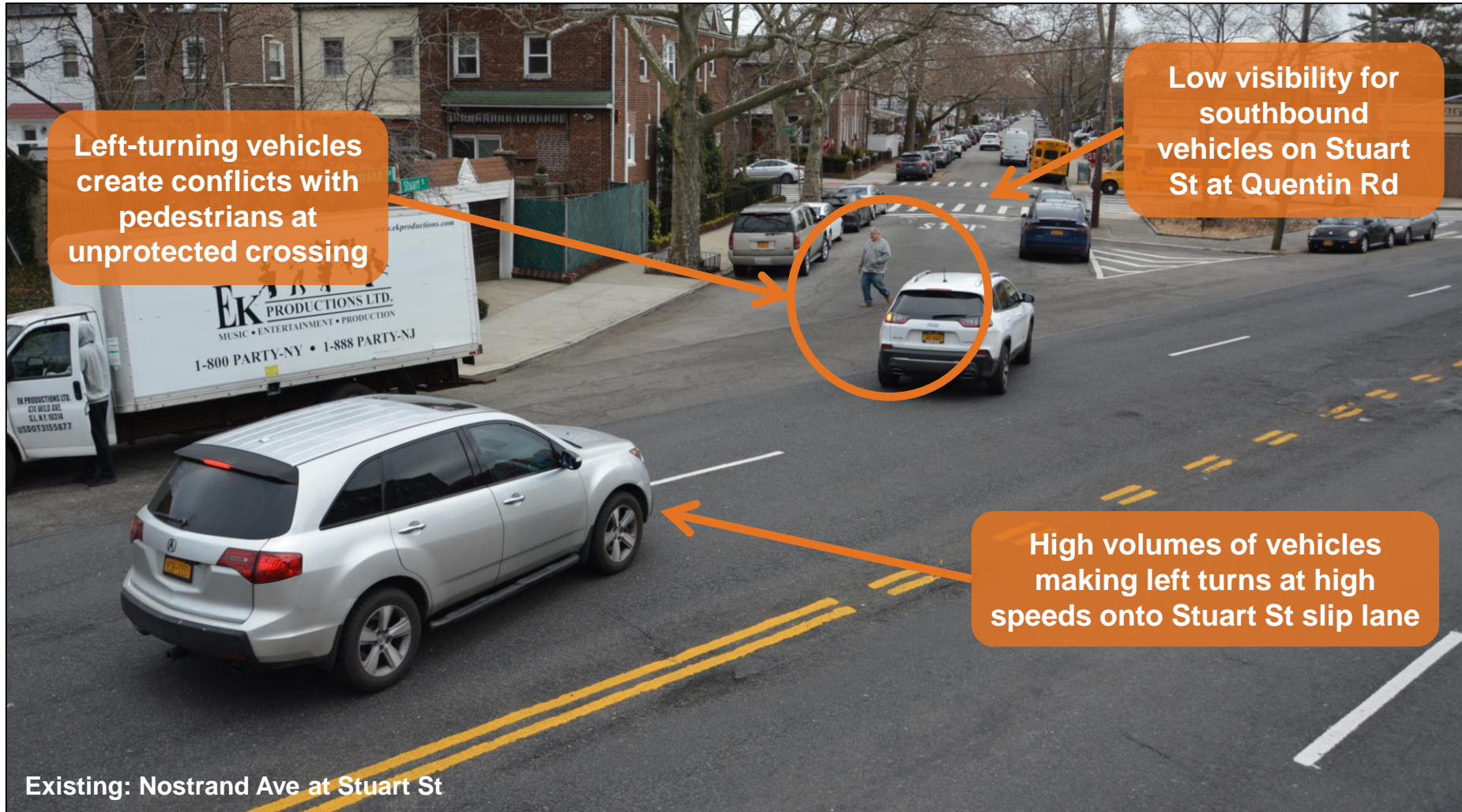
## Proposal Detail: Painted Curb Extensions





# Stuart St (Nostrand Ave to Quentin Rd)

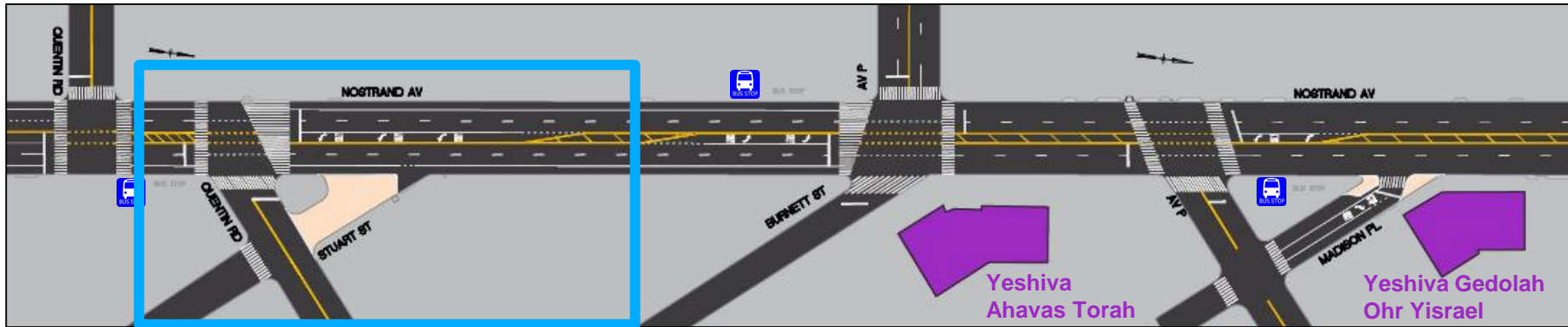
## Existing: Fast, Wide Turns Pose Safety Concerns





# Stuart St (Nostrand Ave to Quentin Rd)

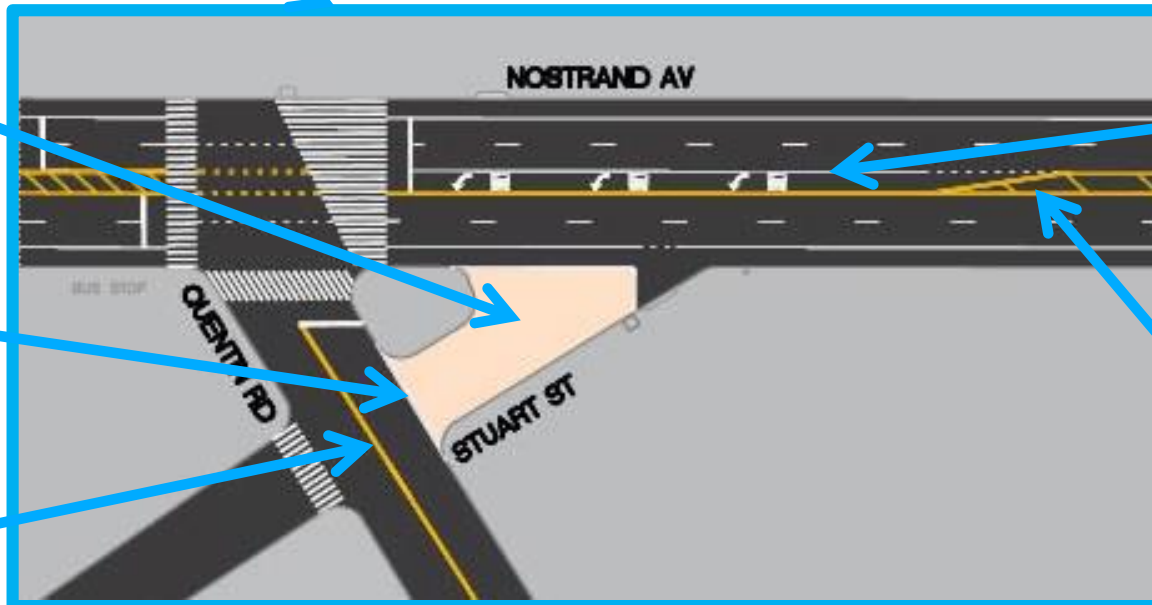
## Proposal: Close Slip Lane with Truffle Paint



Protect pedestrians at Stuart St by removing vehicular traffic

Conflict avoided at low-visibility intersection

Remove existing all-way stop control at intersection



Left-turning vehicle movements diverted into the left turn bay

Flush median narrows travel lanes and slows speeds

# Stuart St (Nostrand Ave to Quentin Rd)

## Proposal: Close Slip Lane with Truffle Paint





# Thank You!



Contact: NYC DOT BK Borough Commissioner's Office – (646) 892-1350



NYCDOT



nyc\_dot



nyc\_dot



NYCDOT