

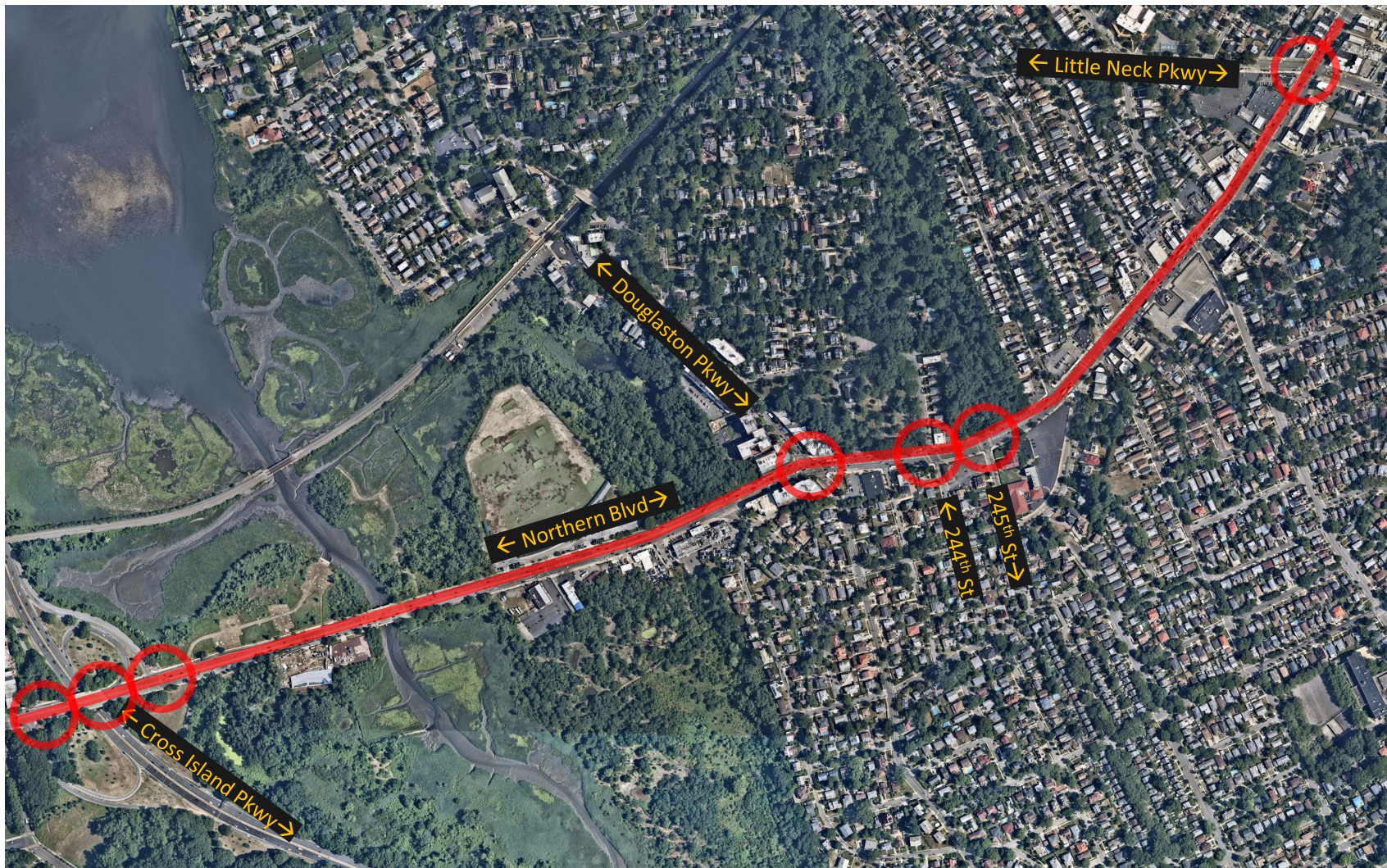


Northern Blvd, 223rd St to Little Neck Pkwy Street Improvement Project (PID 10217)

Community Board 11

March 23rd, 2023

Project Area



Existing Issues and Recommendations



Northern Blvd EB to Cross Island Pkwy SB Entrance Ramp



Issue:

- High speed right turn traffic conflict with pedestrian

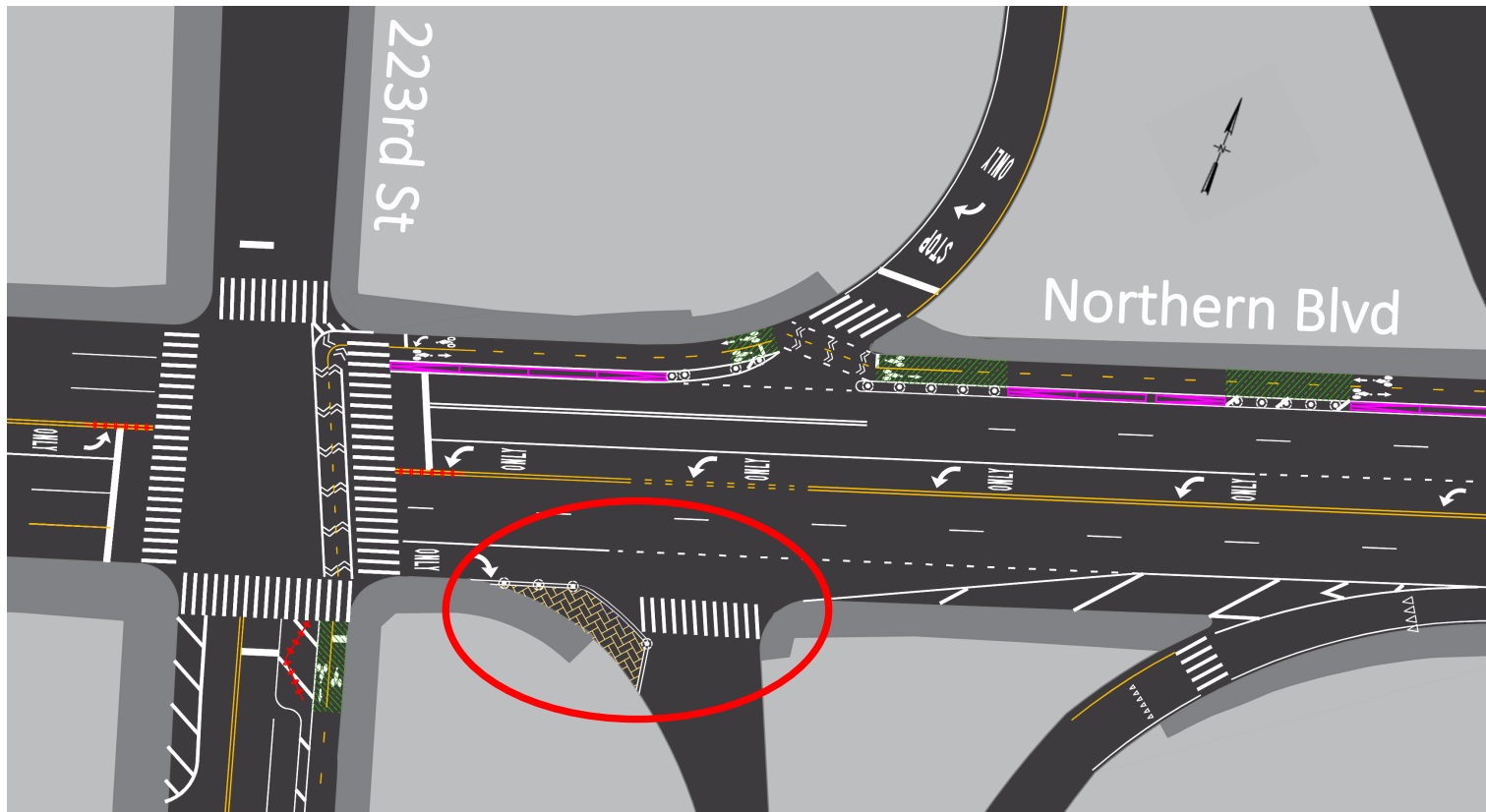


Northern Blvd looking west at Cross Island Pkwy SB Ent. Ramp

Northern Blvd EB to Cross Island Pkwy SB Entrance Ramp (Cont'd)

Improvement:

- Install painted curb extension at the southwest corner to help reduce pedestrian crossing distance and slow down the right turn traffic from Northern Blvd EB



Cross Island Pkwy NB Exit Ramp to Northern Blvd WB



Cross Island Pkwy NB Exit Ramp to Northern Blvd EB

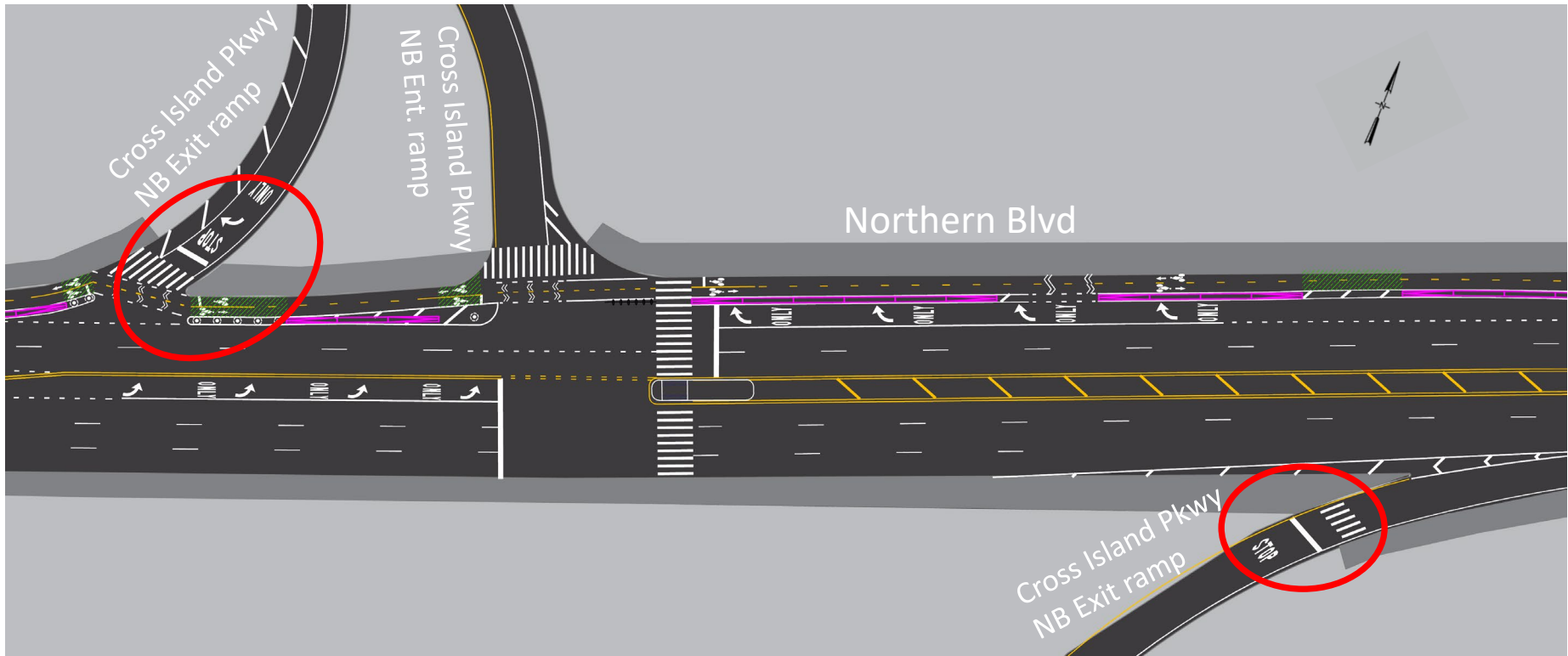


Northern Blvd looking east at Cross Island Pkwy NB Exit Ramp

Cross Island Pkwy NB Exit Ramp to Northern Blvd EB

Cross Island Pkwy NB Exit Ramp to Northern Blvd WB

Improvements



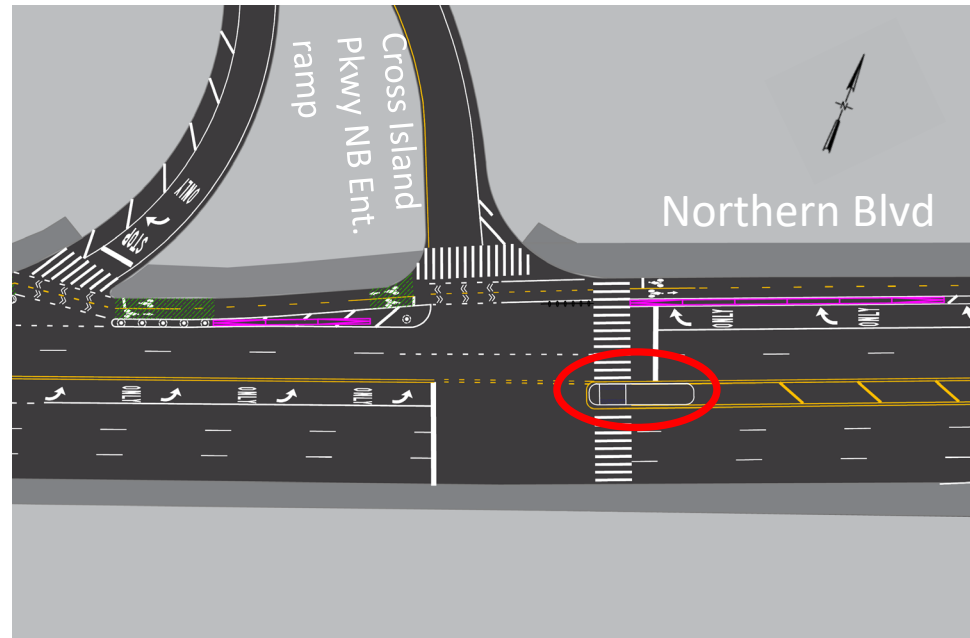
Northern Blvd at Cross Island Pkwy NB Entrance Ramp

Issue:

Long pedestrian crossing (70 ft) for pedestrians to access to the existing park walking path

Improvement:

Install pedestrian refuge island on the existing flush median



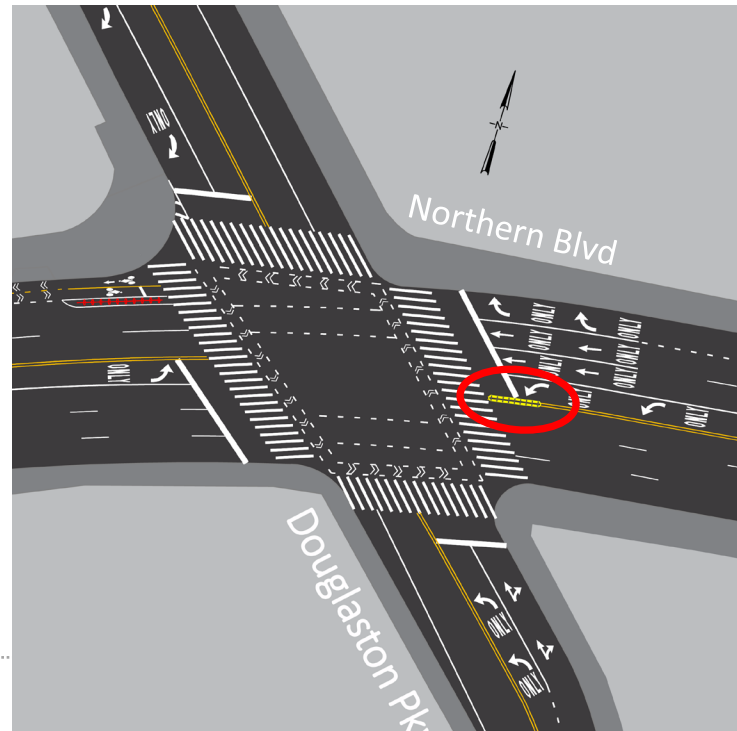
Northern Blvd and Douglaston Pkwy

Issue:

- Long pedestrian crossing (70 ft)
- Heavy left/right turn traffic conflicting with pedestrian

Improvements:

- Install harden centerline to slow down the turning traffic
- Install Leading Pedestrian Interval (LPI)



Northern Blvd at 244th and 245th Streets

Issue:

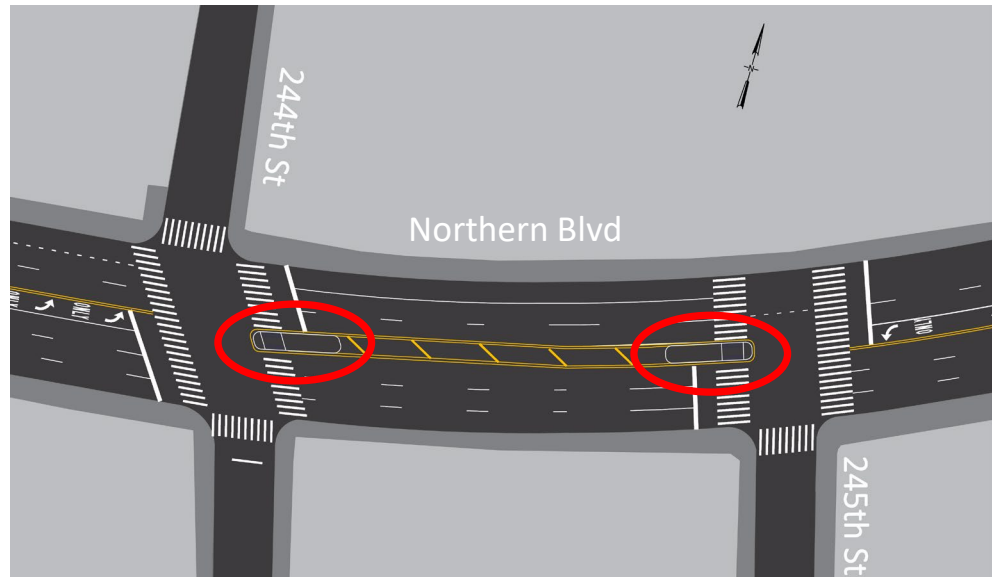
- Long pedestrian crossing (70 ft)
- A middle school located south of Northern Blvd with more than 60 pedestrians utilize the crosswalk during peak hour



Northern Blvd looking west at 245th St

Improvement:

Install pedestrian refuge island on the existing flush median



Northern Blvd and Little Neck Pkwy

Issues:

- Long pedestrian crossing (70 ft)
- Heavy left/right turn traffic conflicting with pedestrian

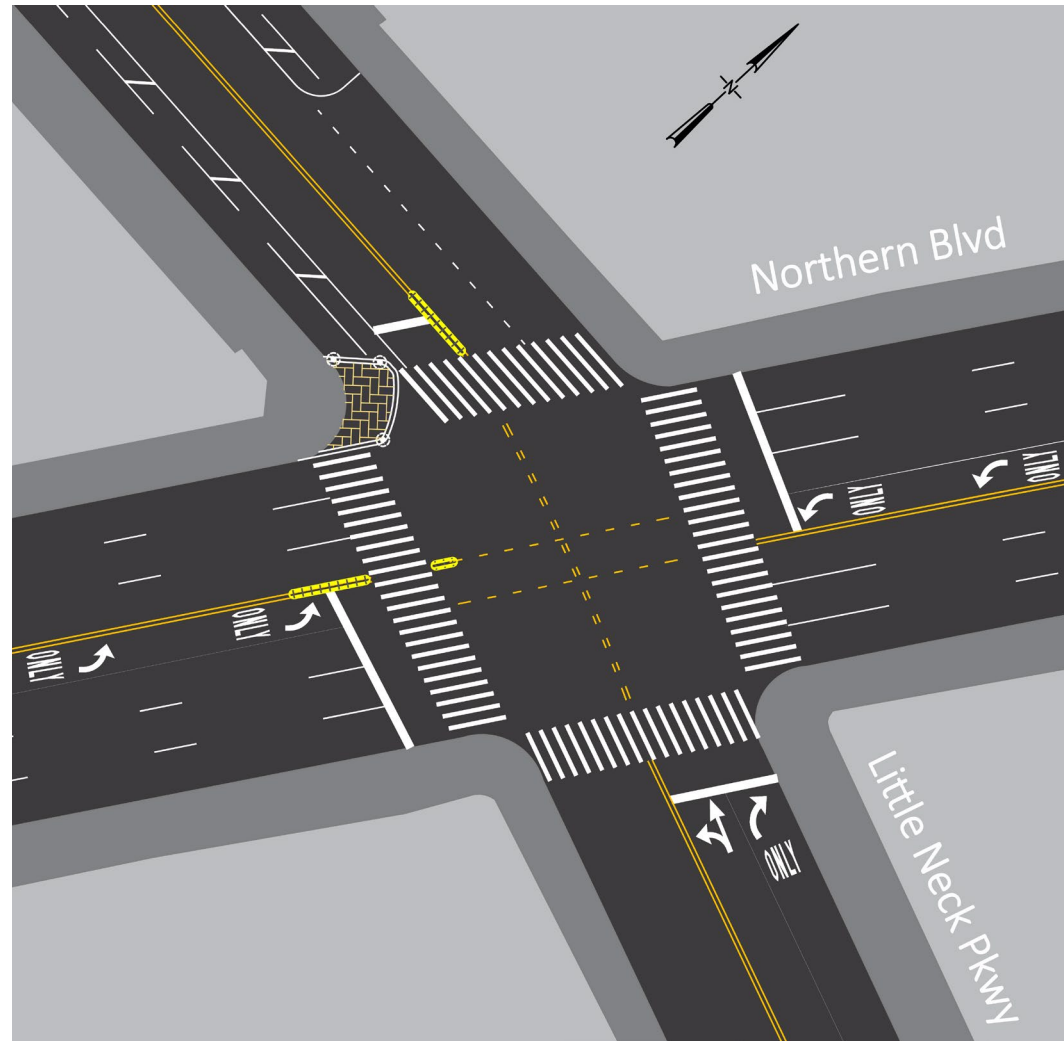


Northern Blvd westbound at Little Neck Pkwy

Northern Blvd and Little Neck Pkwy (Cont'd)

Improvements:

- Install harden centerline to slow down the turning traffic
- Install painted curb extension at the southwest corner of the intersection



Thank You!

Questions?



NYCDOT



nyc_dot



nyc_dot



NYCDOT