



NORTH 5TH STREET PLAZA PROPOSAL

Public Workshop, February 4, 2019

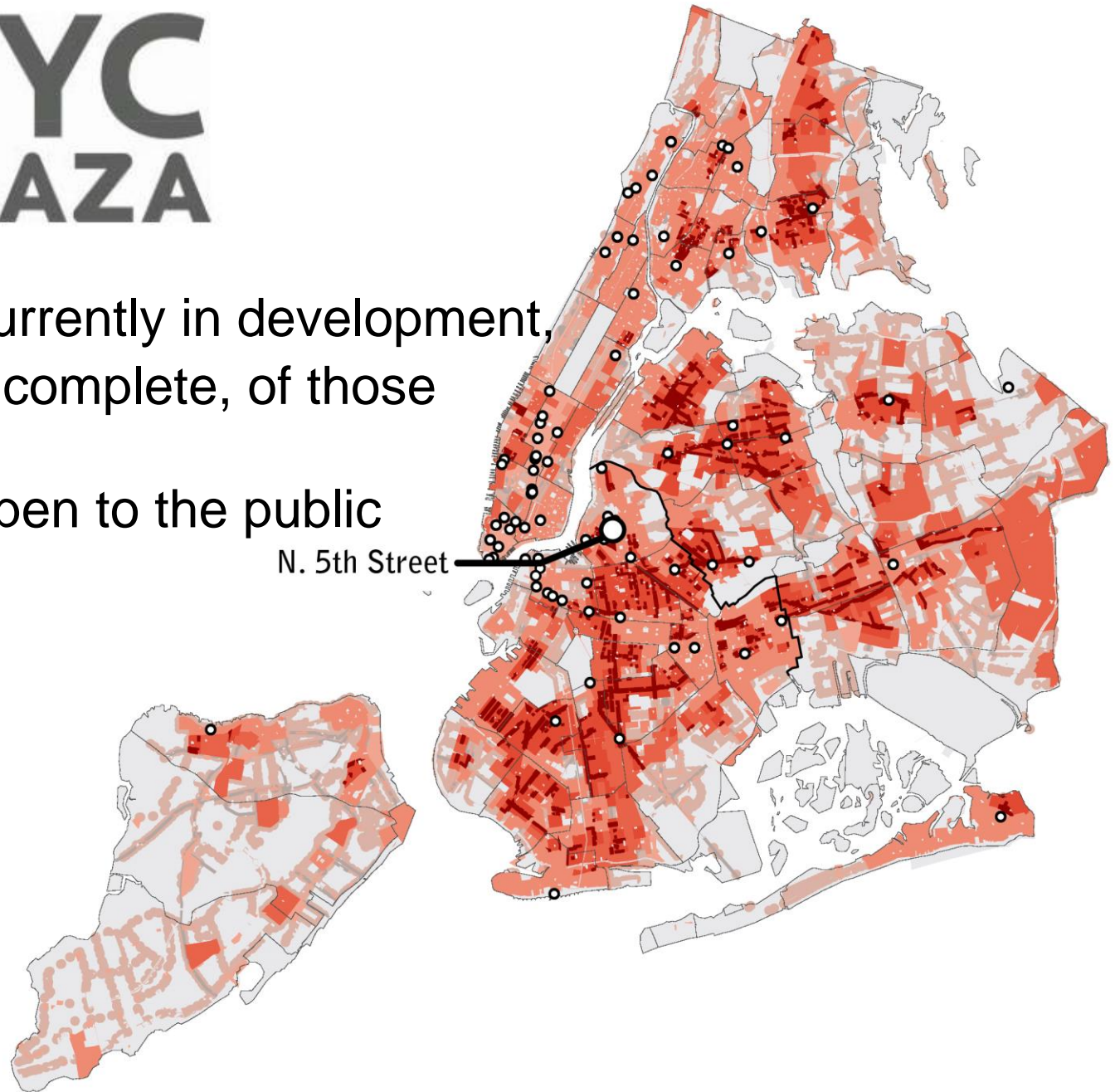
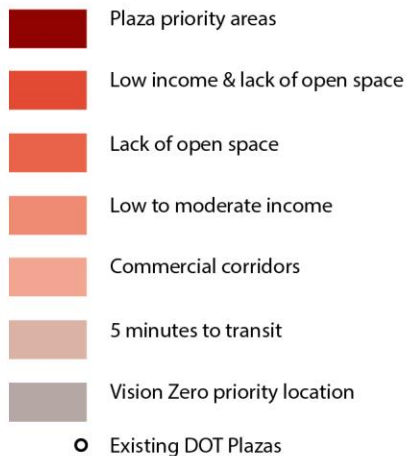




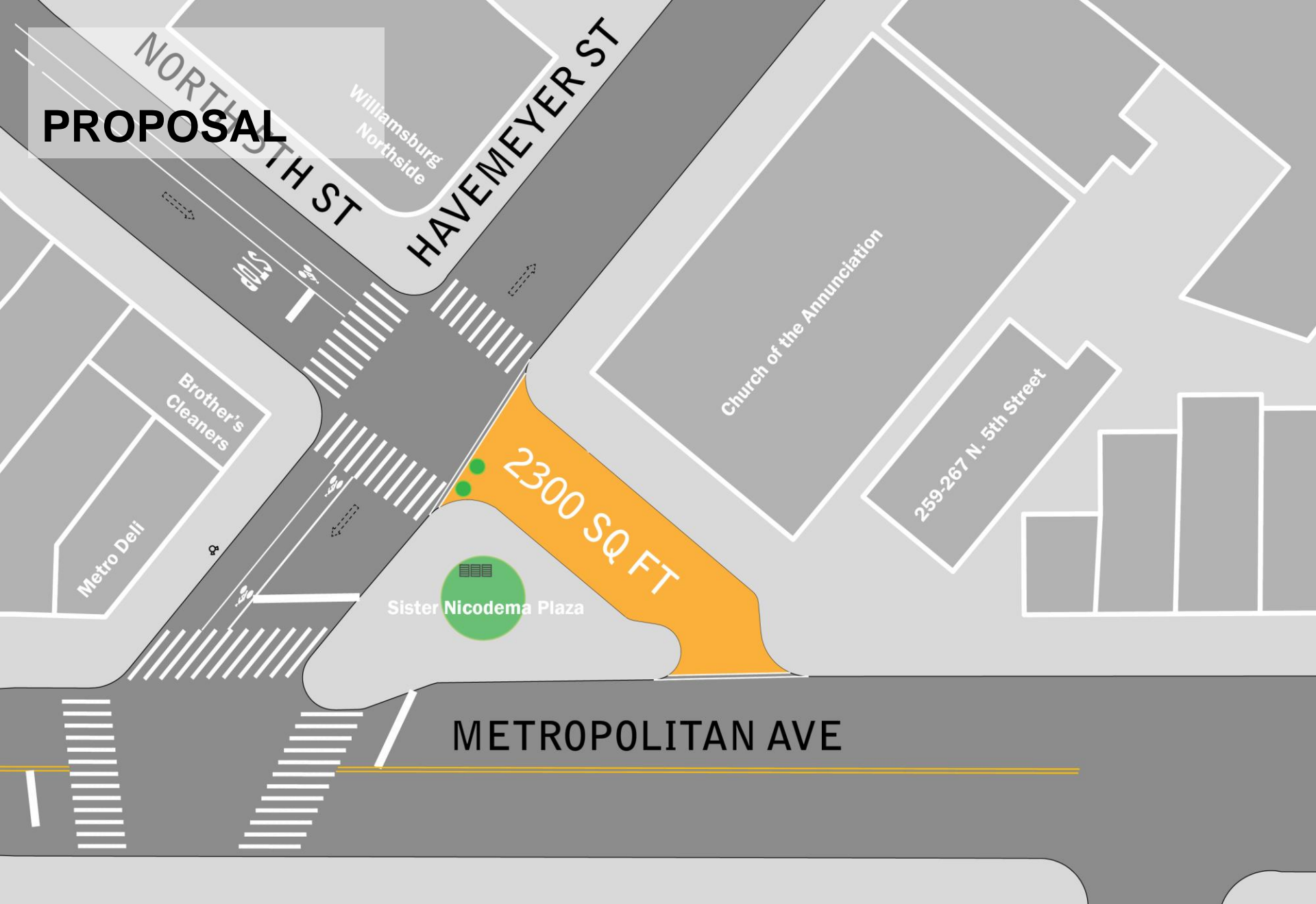
77 Plazas currently in development, construction, or complete, of those

59 Plazas open to the public

N. 5th Street



PROPOSAL



ONGOING PEDESTRIAN SAFETY PROJECTS

● 2016 Pedestrian Safety Project

● 2018 Pedestrian Safety Project

N. 5th PLAZA
PROPOSAL

2016 SAFETY PROJECT

2015



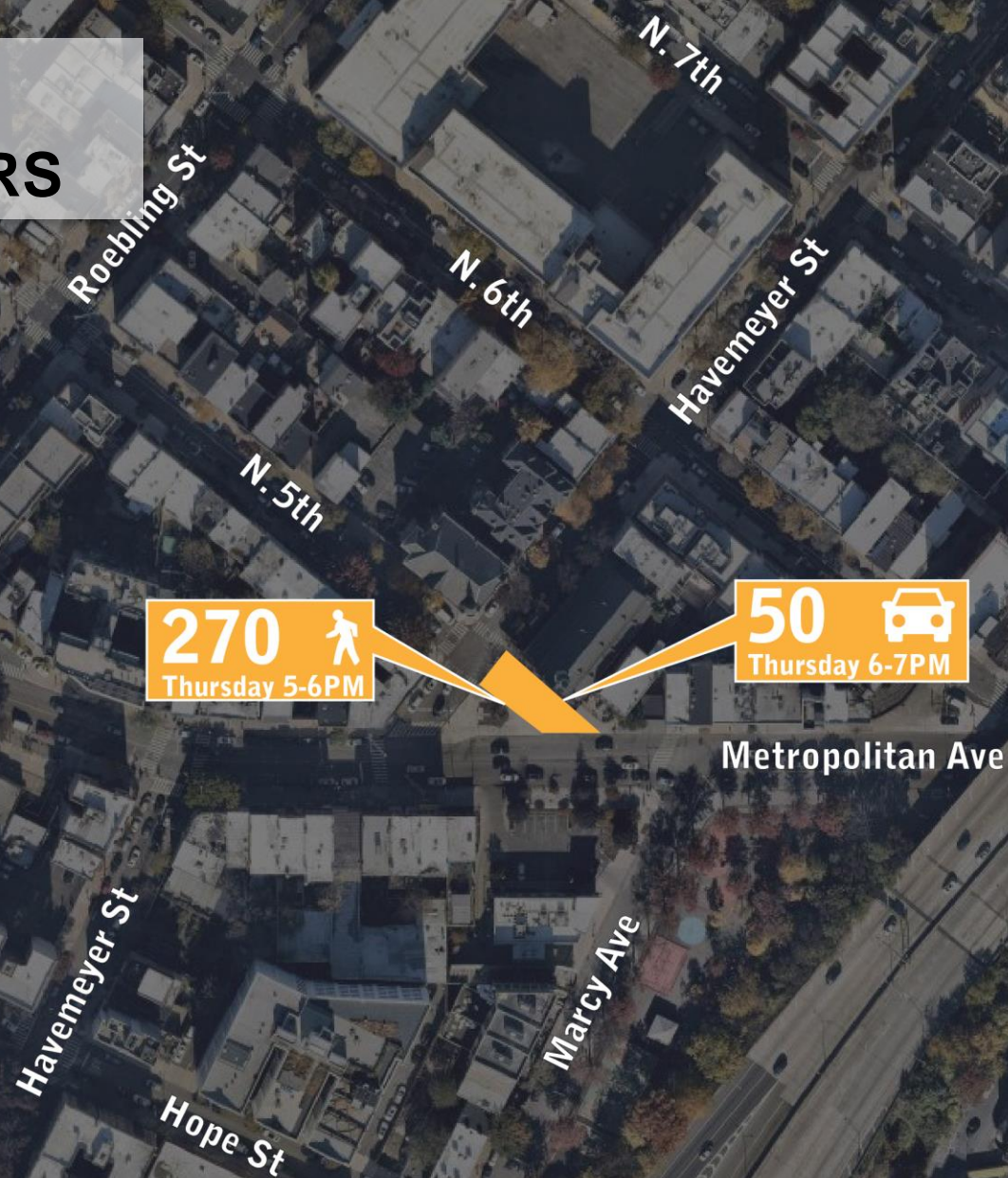
2017



SITE CONTEXT



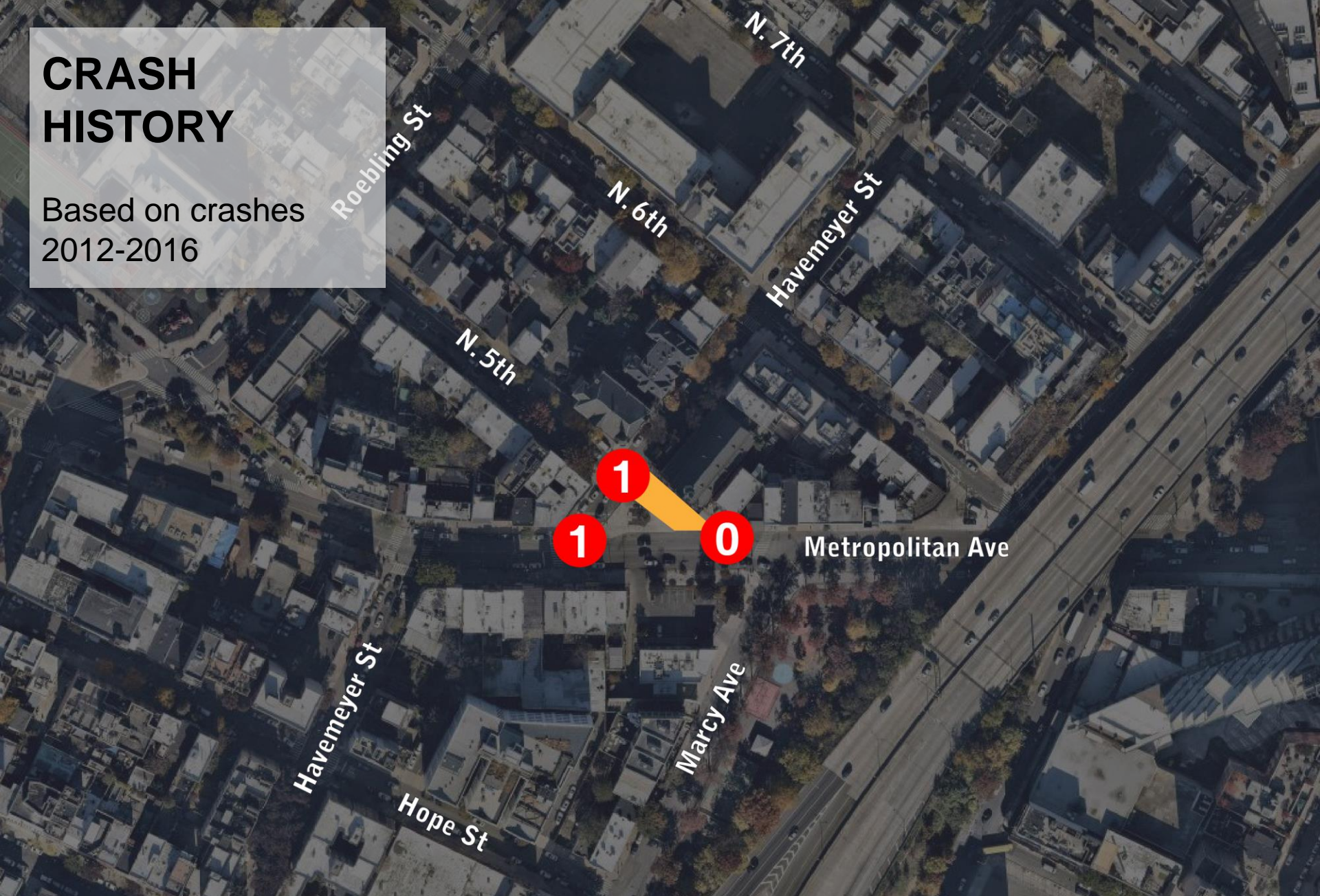
PEAK USERS



Based on data collected October 30 - November 4, 2018

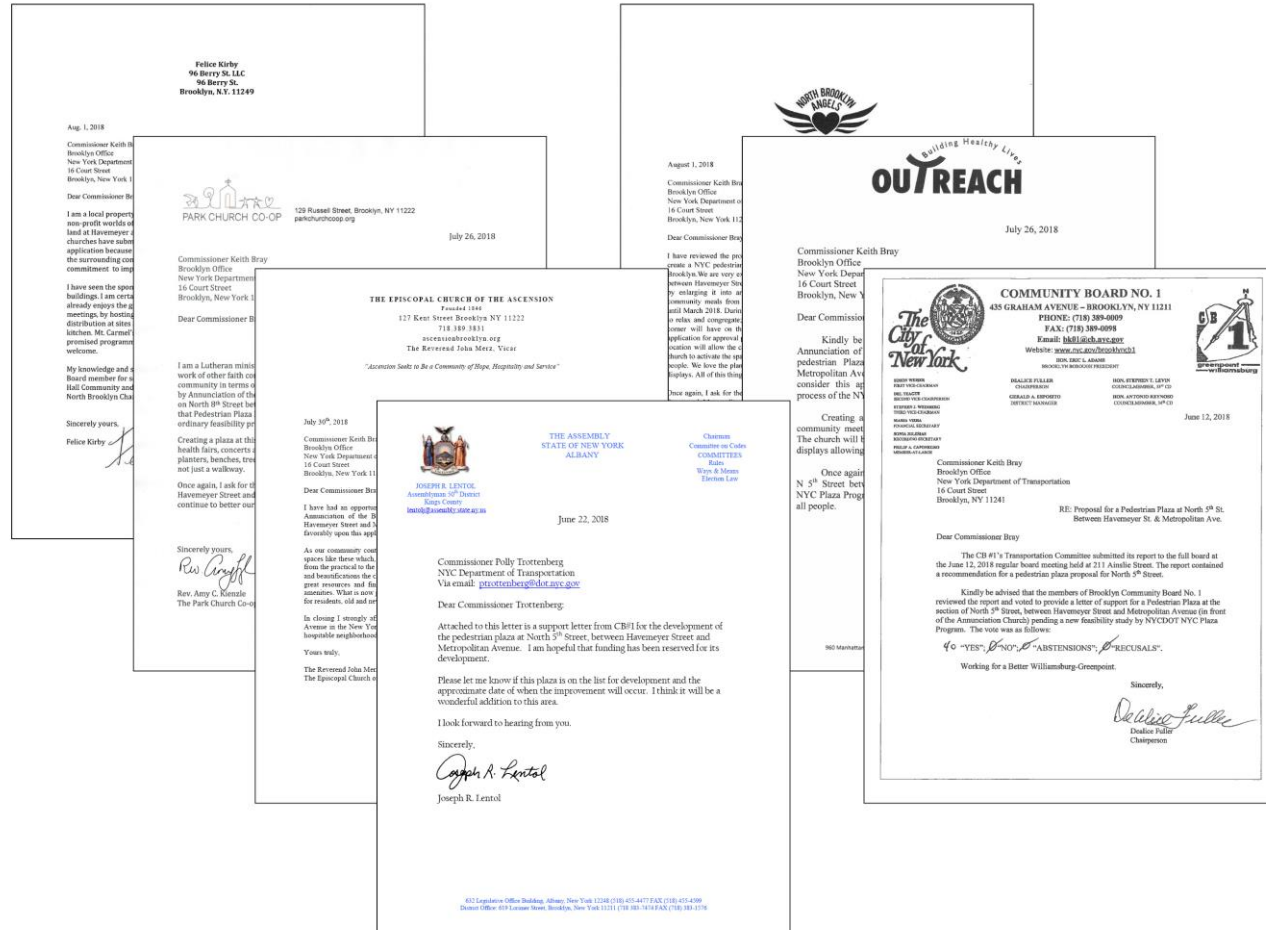
CRASH HISTORY

Based on crashes
2012-2016

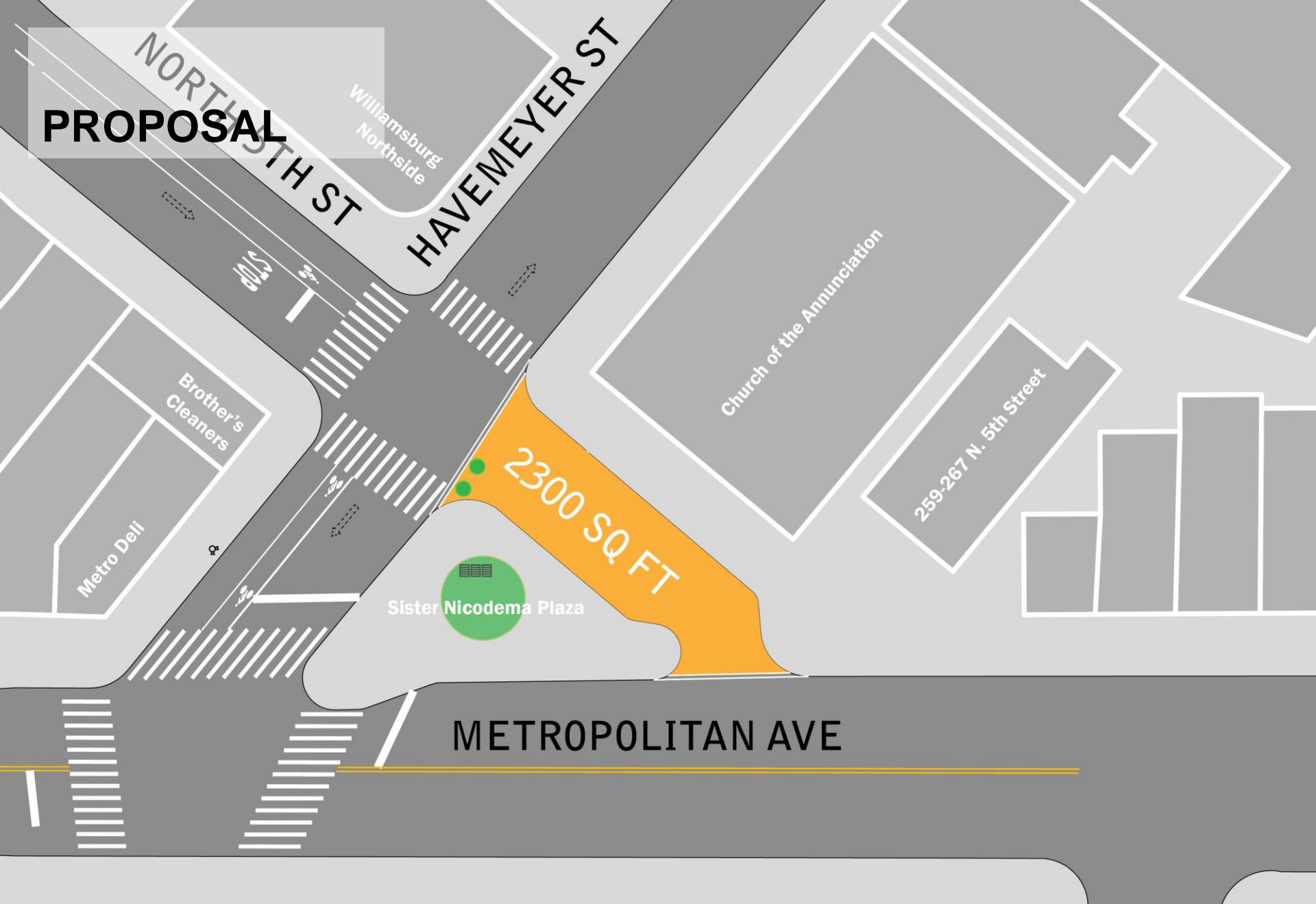


COMMUNITY SUPPORT

- Assembly Member Joseph Lentol
- CB1 Chairperson Dealice Fuller
- Reverend John Merz, The Episcopal Church of the Ascension
- Reverend Amy Kienzle, The Park Church Co-op
- Outreach NY
- Felice Kirby
- North Brooklyn Angels



PROPOSAL



EXISTING VOLUMES

Peak Hour, Thursday 6-7PM



Based on data collected October 30 - November 4, 2018

PROPOSED DIVERSION

Peak Hour, Thursday 6-7PM



Based on data collected October 30 - November 4, 2018

PROPOSED VOLUME TOTALS

Peak Hour, Thursday 6-7PM

Roebbling St

N. 7th

N. 6th

Havemeyer St

N. 5th

192

74

Metropolitan Ave

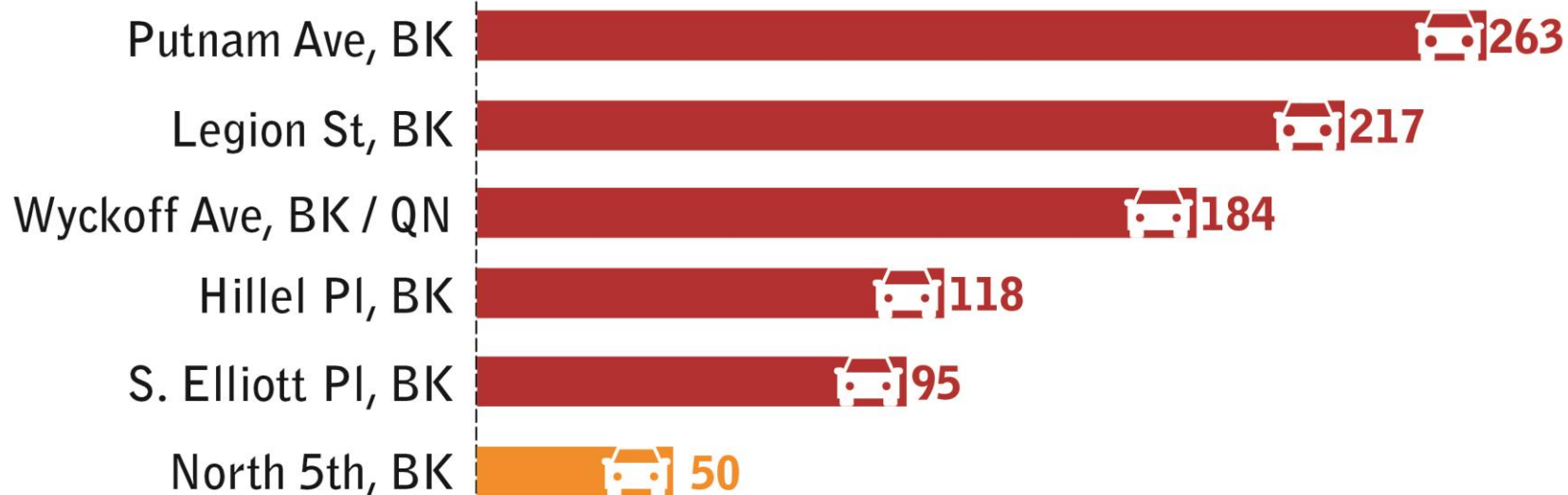
Based on data collected October 30 - November 4, 2018

EXISTING PLAZAS

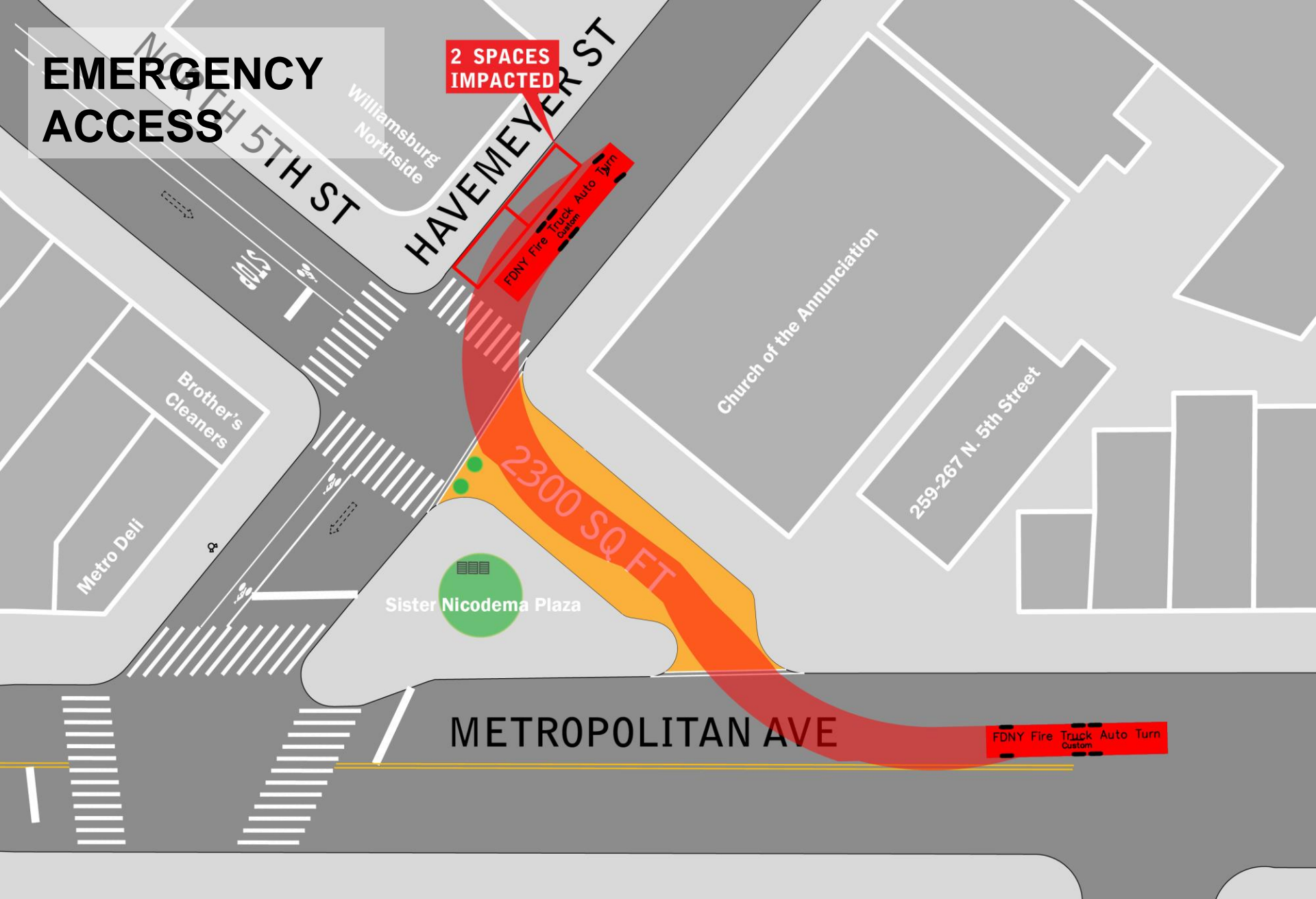
Volume Comparison

STREET CLOSURE

PEAK # OF VEHICLES / HOUR



EMERGENCY ACCESS



EXISTING PARKING



NET LOSS OF 4 SPOTS



PLAZA TOOLKIT

Fowler Square, Fort Greene, BK



UMBRELLAS

MOVABLE
FURNITURE

EPOXY
GRAVEL

FLEXIBLE
DELINEATORS

GRANITE
BLOCKS

PLANTERS

SAFETY TOOLKIT

Putnam Plaza, Clinton Hill, BK

GRANITE BLOCKS

FLEXIBLE
DELINEATORS

DOUBLE
WHITE LINES

PLAZA MAINTENANCE

Partner responsibilities include:

- Day-to-day maintenance
- Programming
- Coordination with agencies, officials, and local stakeholders



Putnam Triangle Plaza

Welcome!

We want you to have a safe and enjoyable time.
Be courteous and respectful to others, and
please keep the plaza clean.

Pedestrian Plaza Rules Prohibit:

- Obstruction of pedestrian traffic
- Destruction, removal or tampering of any property or equipment
- Camping
- Unattended property
- A person or their belongings taking up more than one seat
- Consumption of alcoholic beverages, except as otherwise permitted
- Skateboarding
- Feeding of undomesticated animals
- Spitting, urination, defecation
- Unreasonable noise
- Dogs off-leash



Permits are required for all events

Bicycle riding is only permitted on designated routes or
where indicated by signage or markings

OPEN TO THE PUBLIC

To learn more visit nyc.gov/plazas
or call 311

NEXT STEPS

FEBRUARY

Workshop

SPRING

CB1 Transportation Committee + Full Board Presentations

SUMMER

Potential Implementation pending CB support and maintenance agreement

THANK YOU!

Questions?



NYC DOT



NYC DOT



nyc_dot



NYC DOT