



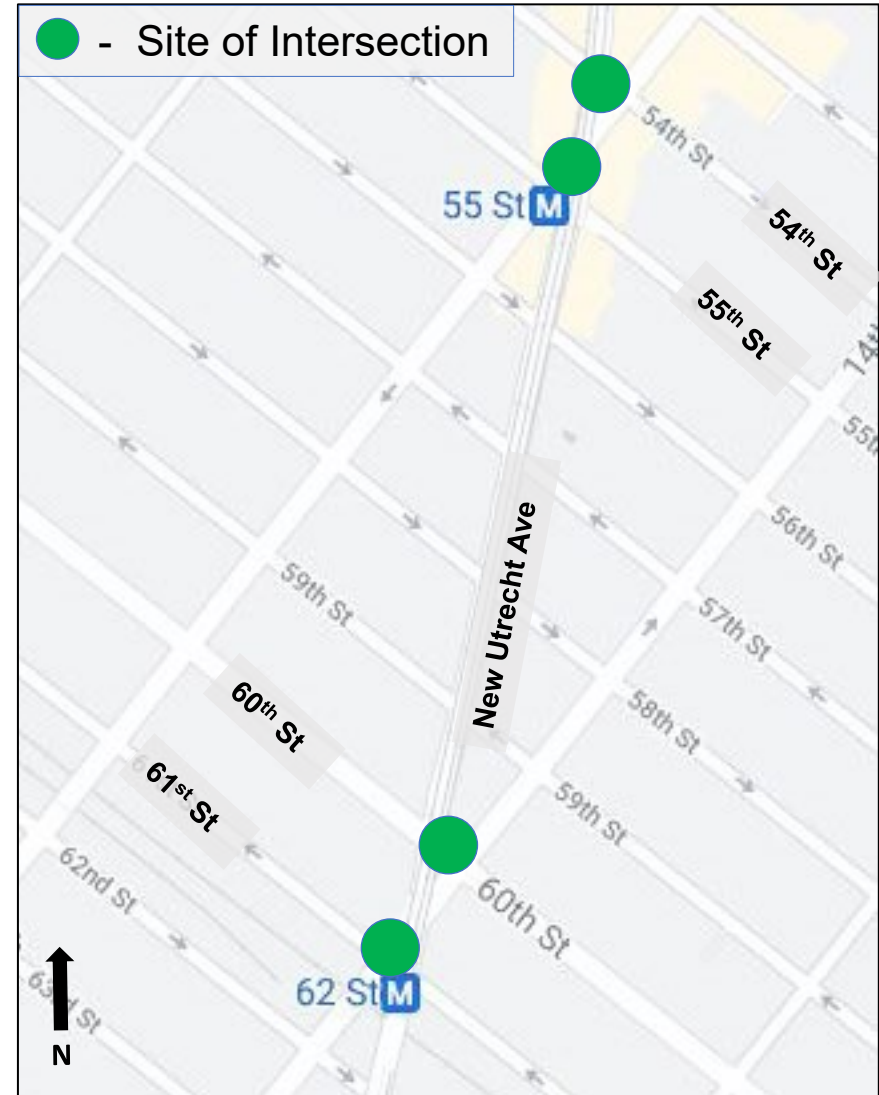
New Utrecht Avenue 54th & 55th St / 60th & 61st St

Brooklyn Community Board 12

January 24, 2023

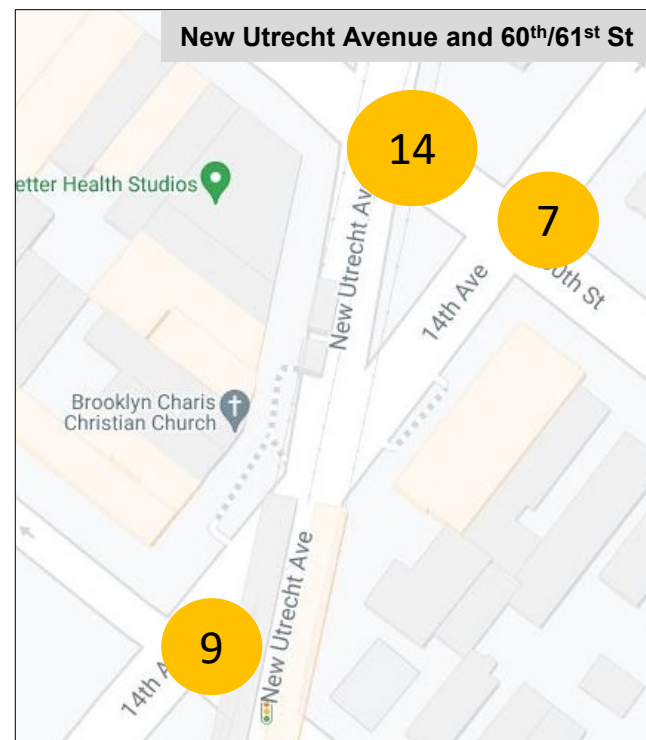
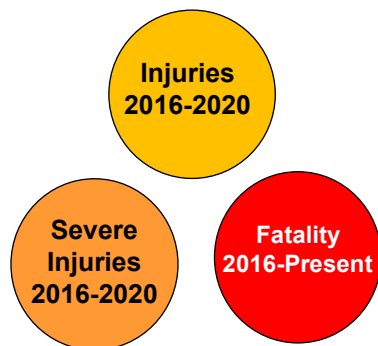
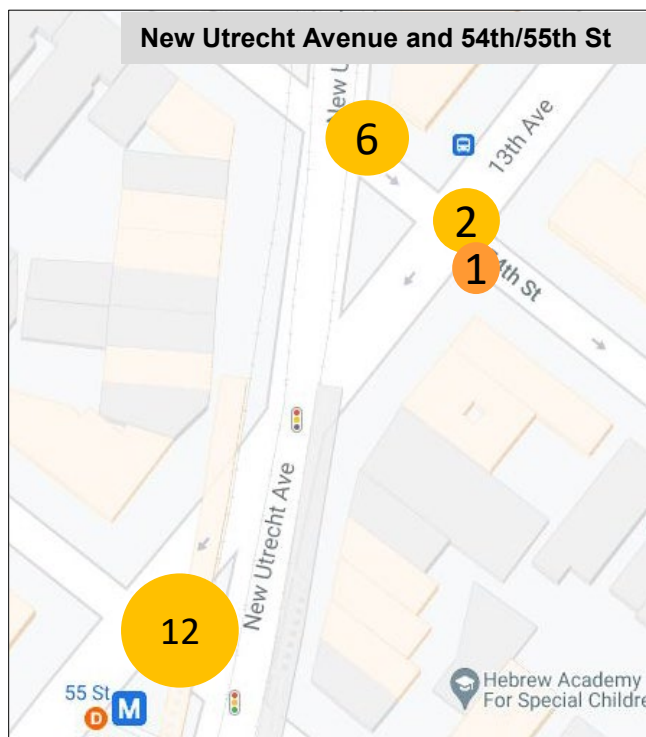
Project Location

- Four multi-leg intersections along New Utrecht Avenue in the Borough Park neighborhood
- B16 bus stop at 13th Avenue and 54th St, D train station located at 55th St & 61st St
- New Utrecht Avenue is a local truck route
- Busy commercial land use along New Utrecht Avenue with heavy pedestrian traffic
- Located within the Borough Park Senior Pedestrian Focus Area and a Vision Zero Priority Area



Safety Data

- 63% of crashes with injuries were vehicle on vehicle
 - Majority were right-angle, left turn, and rear end crashes
- Majority of pedestrian injuries involved a pedestrian crossing with the signal or involved a pedestrian crossing outside of the crosswalk
- 1/3 of all pedestrian and cyclist crashes involved a child under the age of 18



Existing Conditions



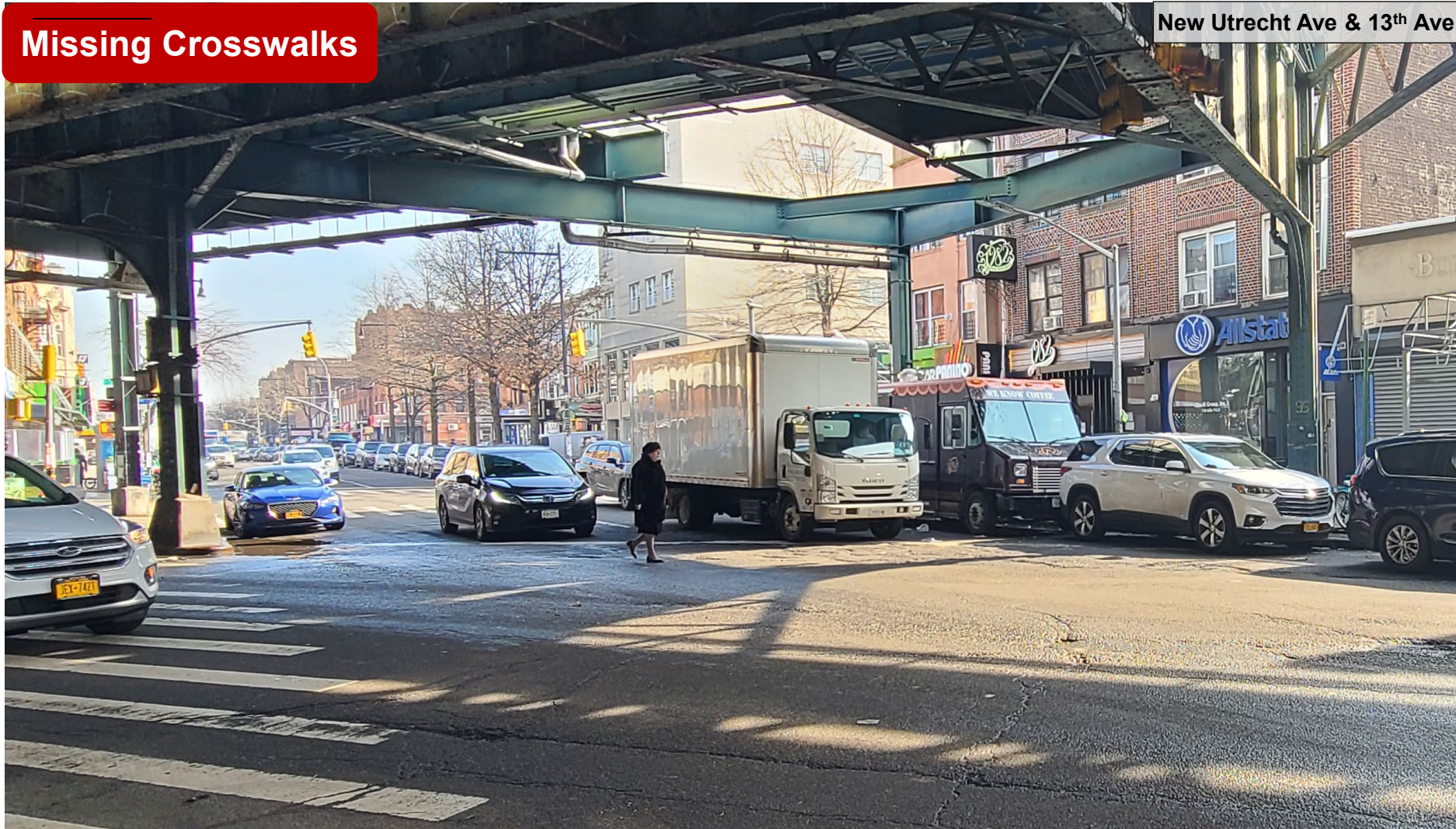
New Utrecht Ave & 13th Ave

Disorganized and unpredictable vehicle movements create conflicts between vehicles and pedestrians

Existing Conditions

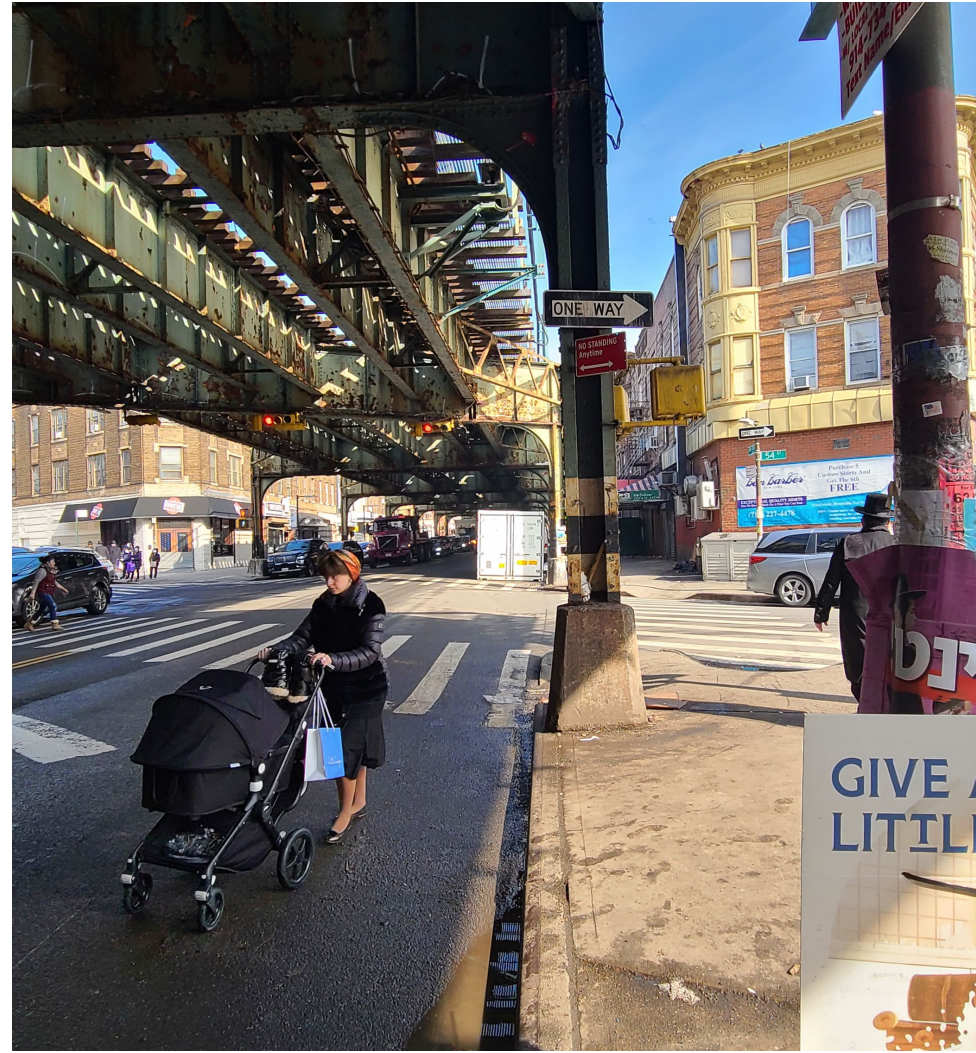
Missing Crosswalks

New Utrecht Ave & 13th Ave



Existing Conditions

Poor ADA accessibility



Existing Conditions

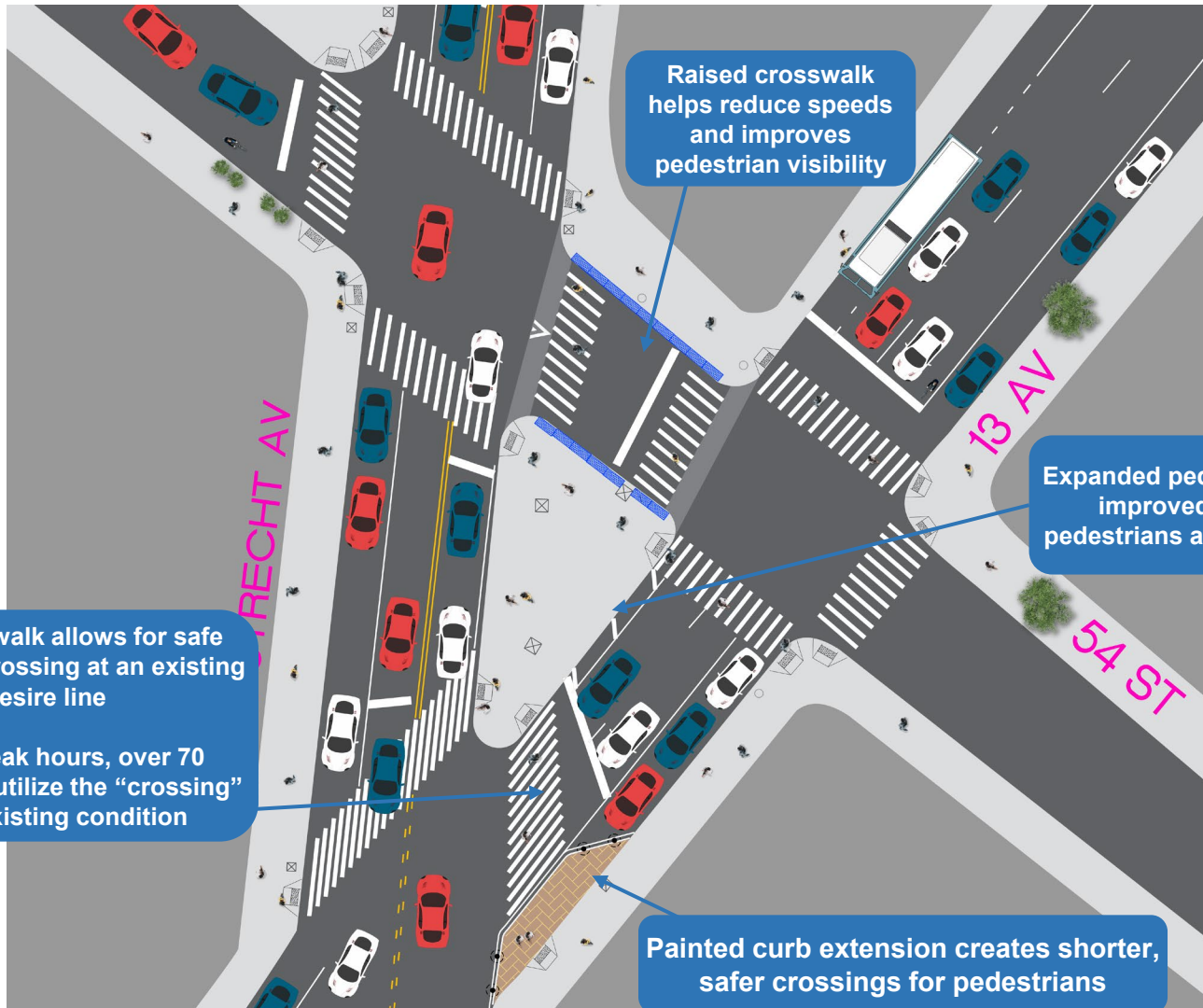


Existing Conditions



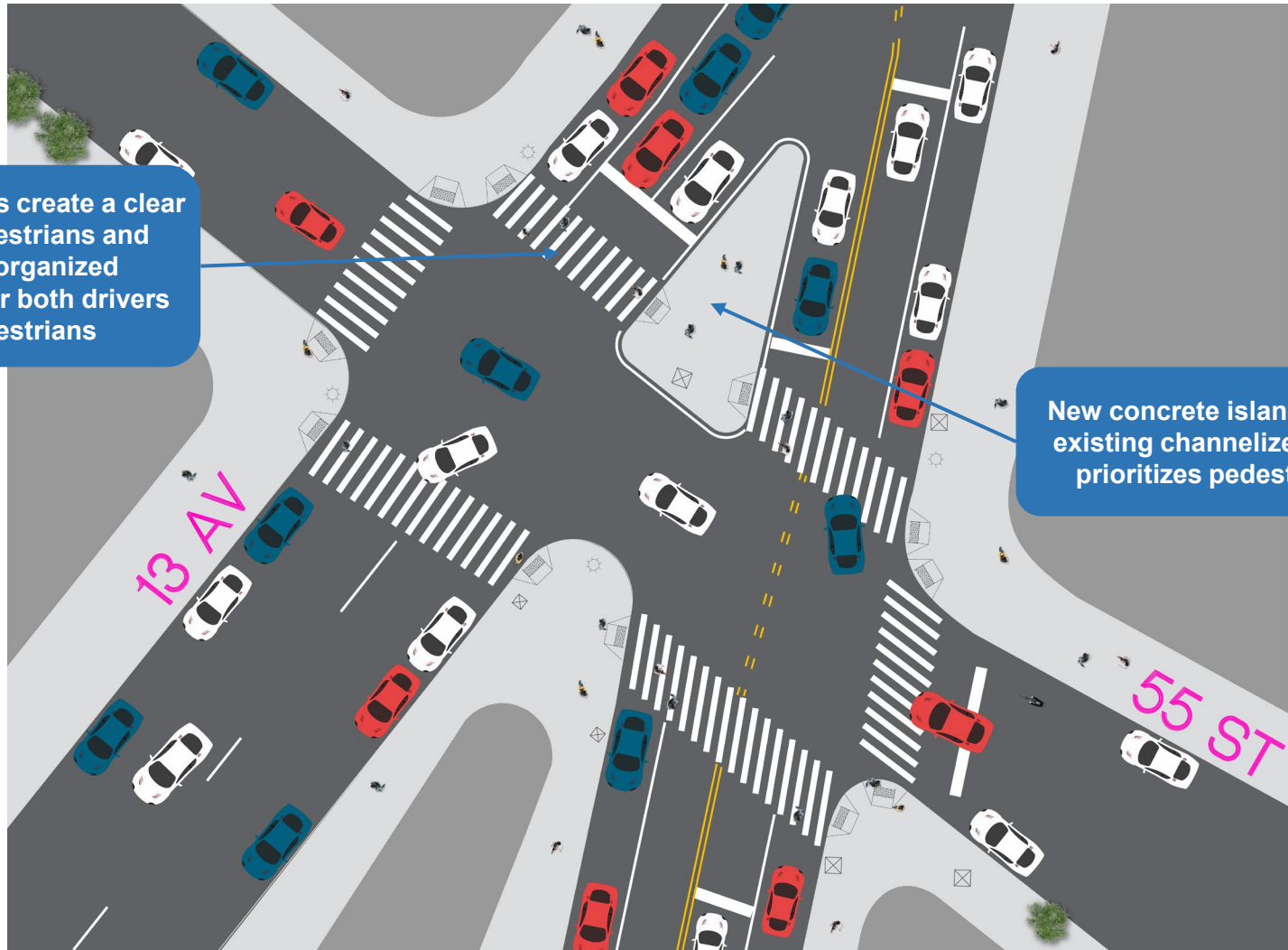
Proposal

New Utrecht Ave & 54th St



Proposal

New Utrecht Ave & 55th St



New crosswalks create a clear path for pedestrians and establish organized movements for both drivers and pedestrians

New concrete island repurposes existing channelized space and prioritizes pedestrian safety

Raised Crosswalks

- Similar to a speed hump, but with a flat top for the pedestrian crossing
- **Safety Benefits**
 - Reduce speeds – self enforcing speed control, like speed humps
 - Improve pedestrian visibility, particularly children pedestrians, by elevating the pedestrian to the height of the curb
 - Encourage motorist to yield to pedestrians
 - Increase accessibility – provide a level crossing for those with ambulatory disabilities and seniors

Location Selection

- Prioritize locations adjacent to child pedestrian generators (schools, parks, playgrounds) near transit, and where speeding is occurring



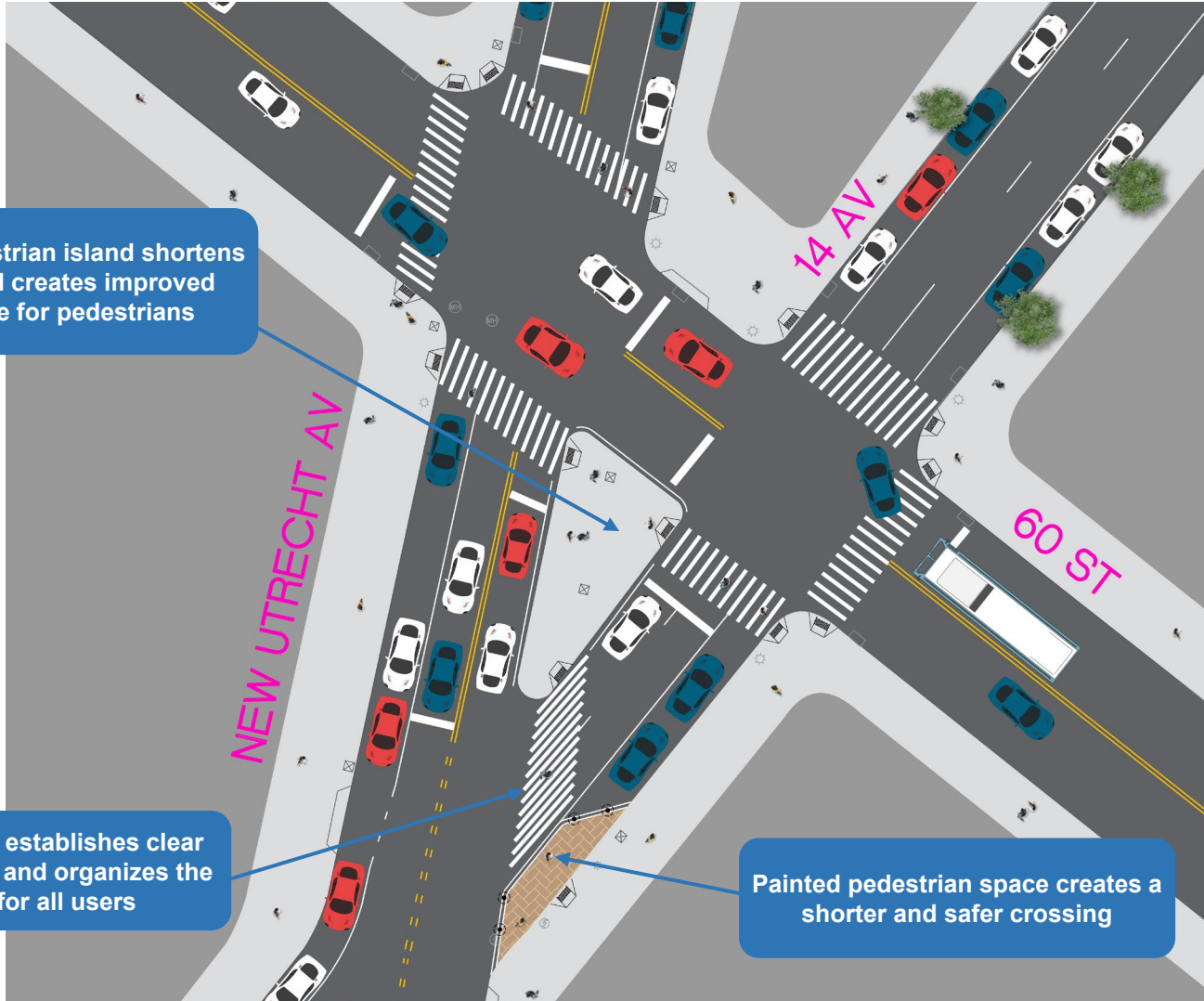
Proposal

New Utrecht Ave & 60th St

Expanded pedestrian island shortens crossings and creates improved refuge space for pedestrians

New crosswalk establishes clear pedestrian path and organizes the roadway for all users

Painted pedestrian space creates a shorter and safer crossing



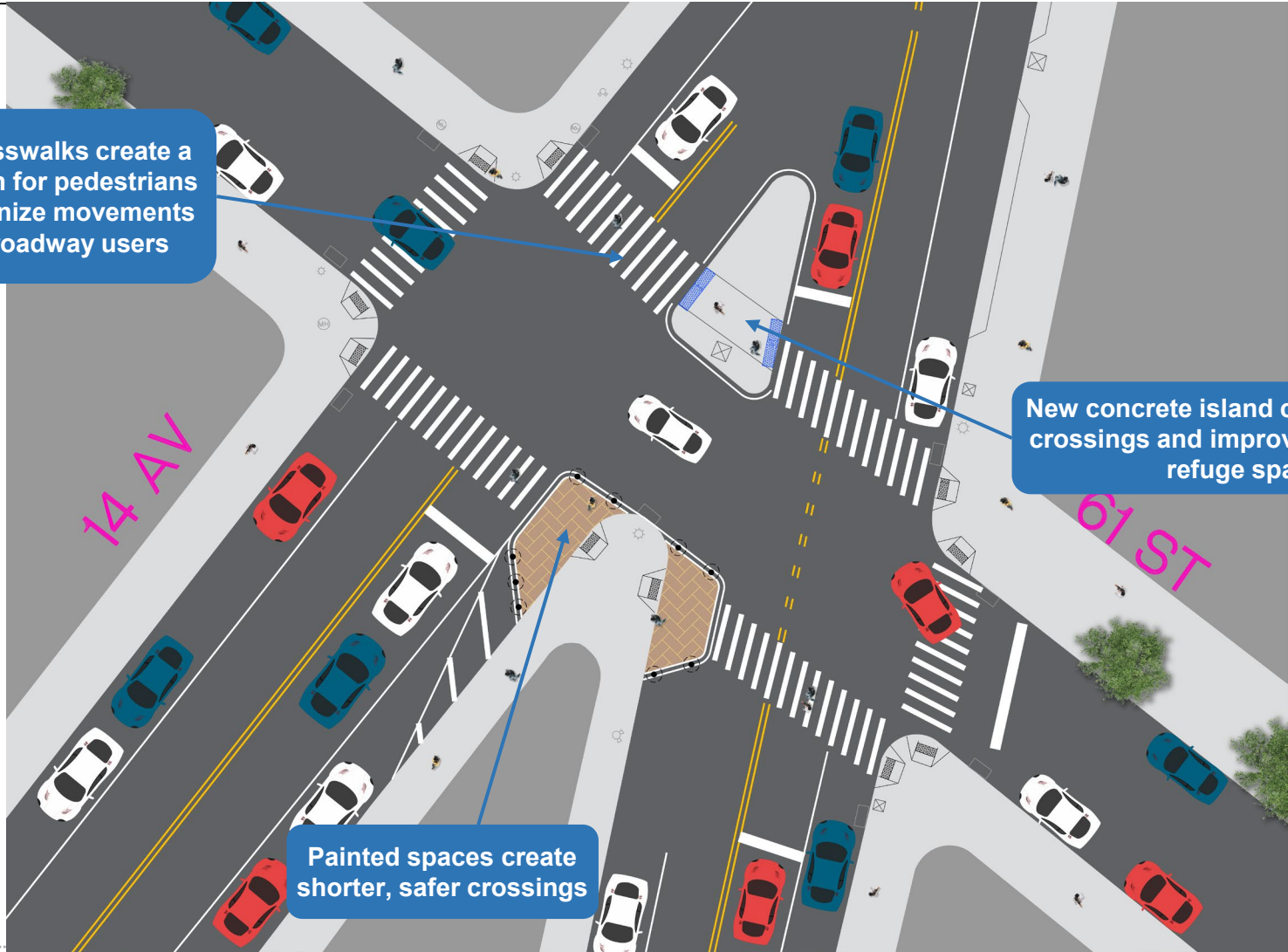
Proposal

New Utrecht Ave & 61st St

New crosswalks create a clear path for pedestrians and organize movements for all roadway users

New concrete island creates shorter crossings and improved pedestrian refuge space

Painted spaces create shorter, safer crossings



Summary

- New Utrecht Avenue is a busy commercial corridor that draws heavy pedestrian traffic
- Shortened crossing distances and improved pedestrian spaces provide safer and shorter crossings for pedestrians and seniors
- New crosswalks establish clear pathways for pedestrians to help organize the roadway for all users
- Improved crossing treatments, like the raised crosswalk, help discourage speeding and prioritize pedestrians at crossings



Woman walks with child in the middle of New Utrecht Ave due to poor access to pedestrian island



Man crosses 13th Ave at an existing desire line where no crosswalk exists

Thank You!

Questions?



NYCDOT



nyc_dot



nyc_dot



NYCDOT