



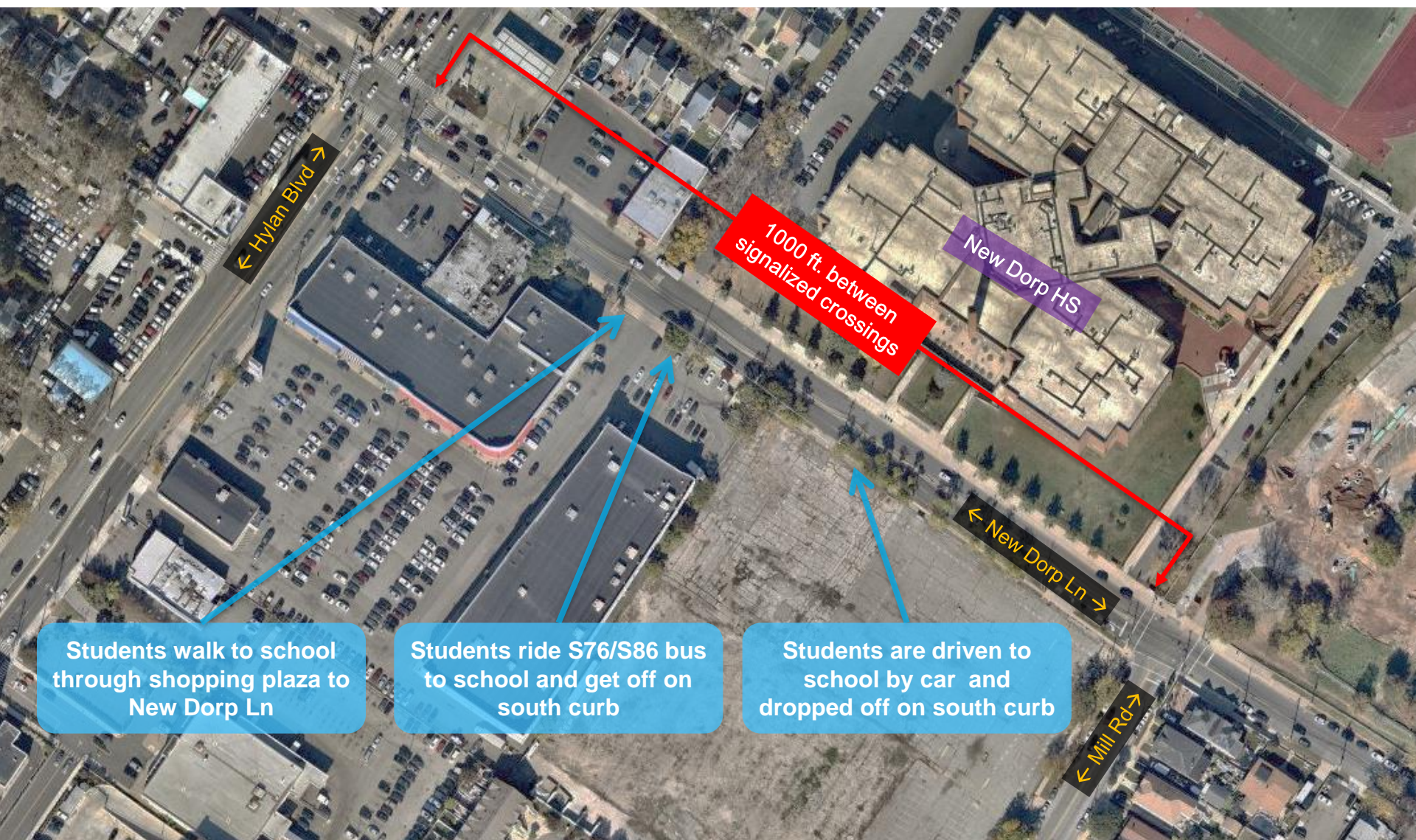
NEW DORP LANE MILL RD TO HYLAN BLVD

School Safety Improvements

Presentation for CB 2 | May 7, 2018

EXISTING CONDITIONS

- Students arrive to New Dorp High School on south side of New Dorp Ln
- Long distances to marked or controlled pedestrian crossings



EXISTING CONDITIONS

- Students walk shortest path across New Dorp Ln to New Dorp High School



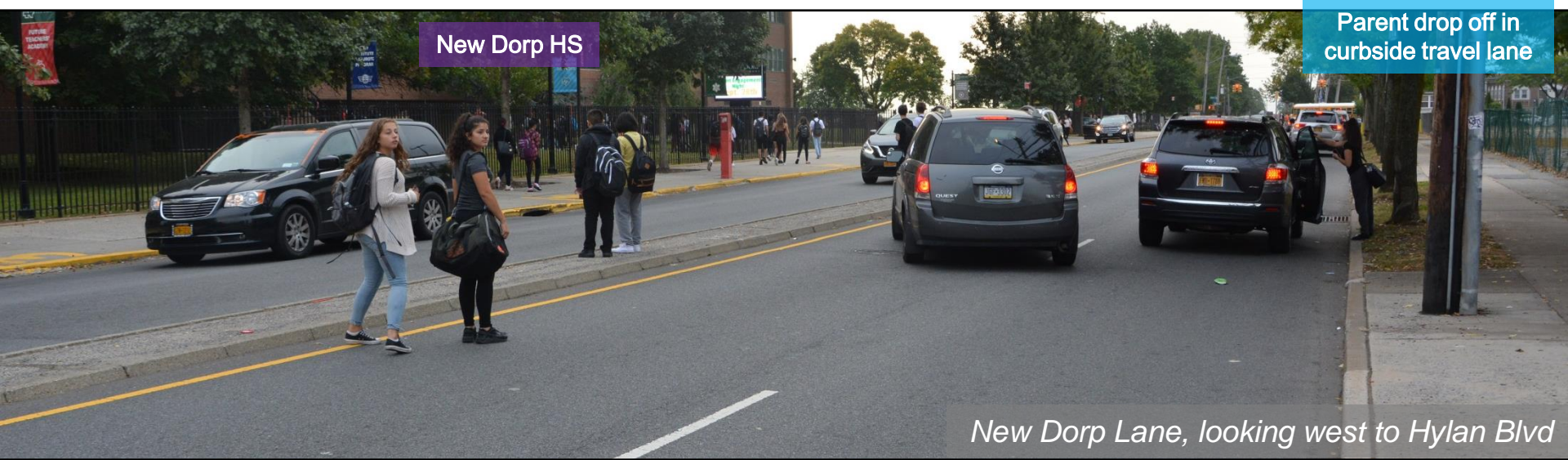
EXISTING CONDITIONS

- Students get off and cross in front of bus
- Poor visibility between pedestrians and passing drivers on New Dorp Ln



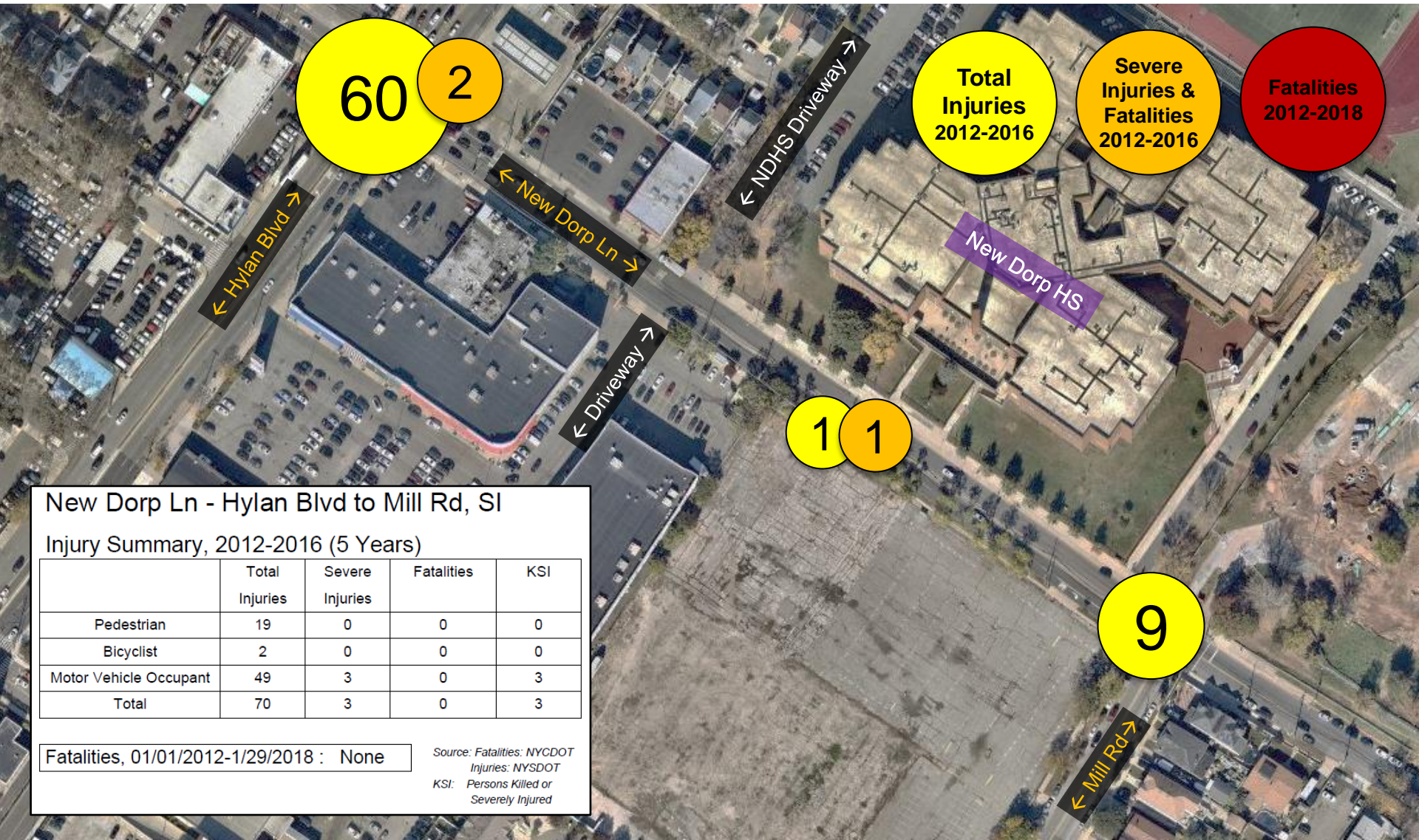
EXISTING CONDITIONS

- Students are driven by car and dropped off on south curb, crossing New Dorp Ln between stopped cars and gaps in traffic



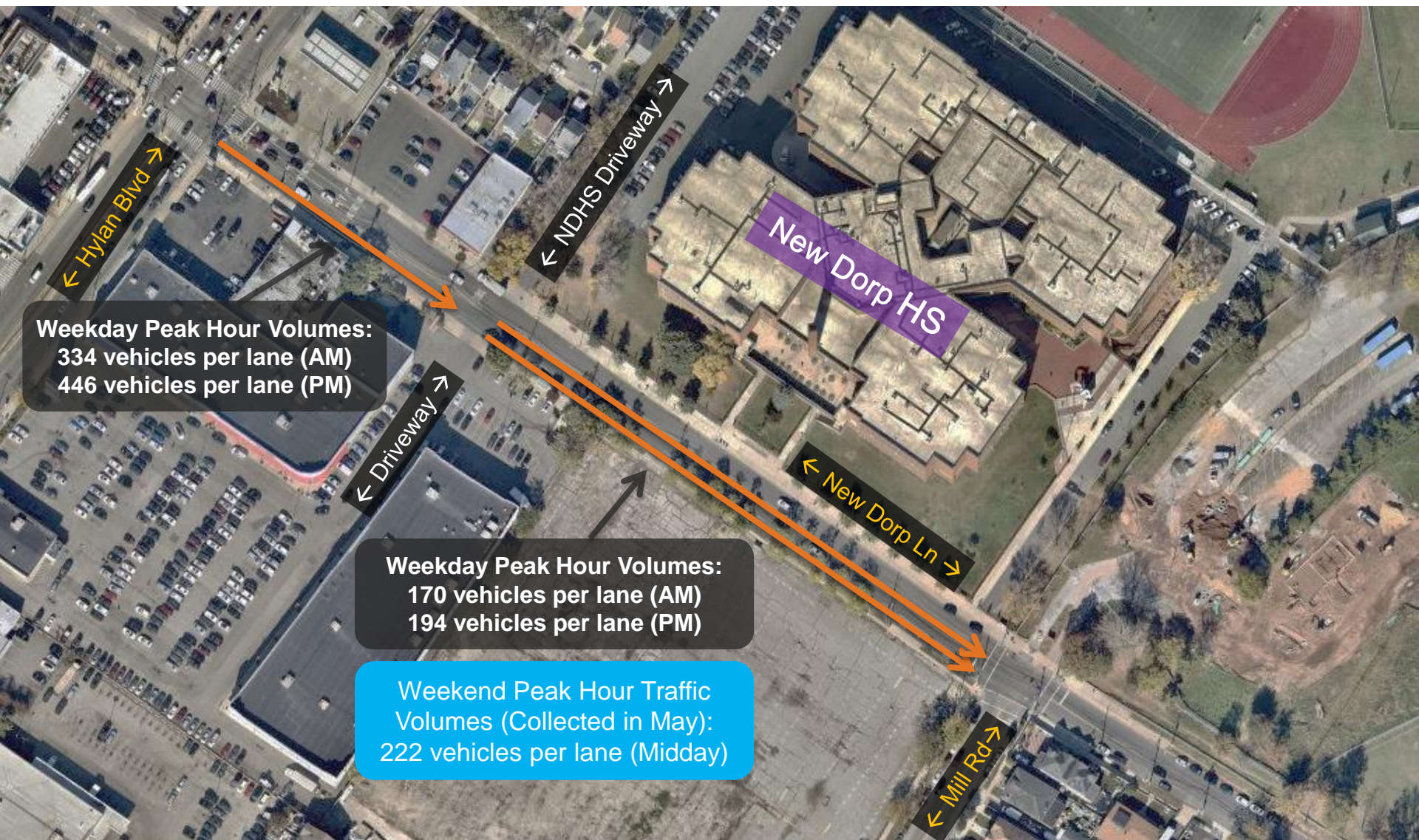
SAFETY DATA

- New Dorp Ln is a High Crash Corridor with 14.7 KSI per mile, ranking in the top 10% of Staten Island corridors (2012-2016)



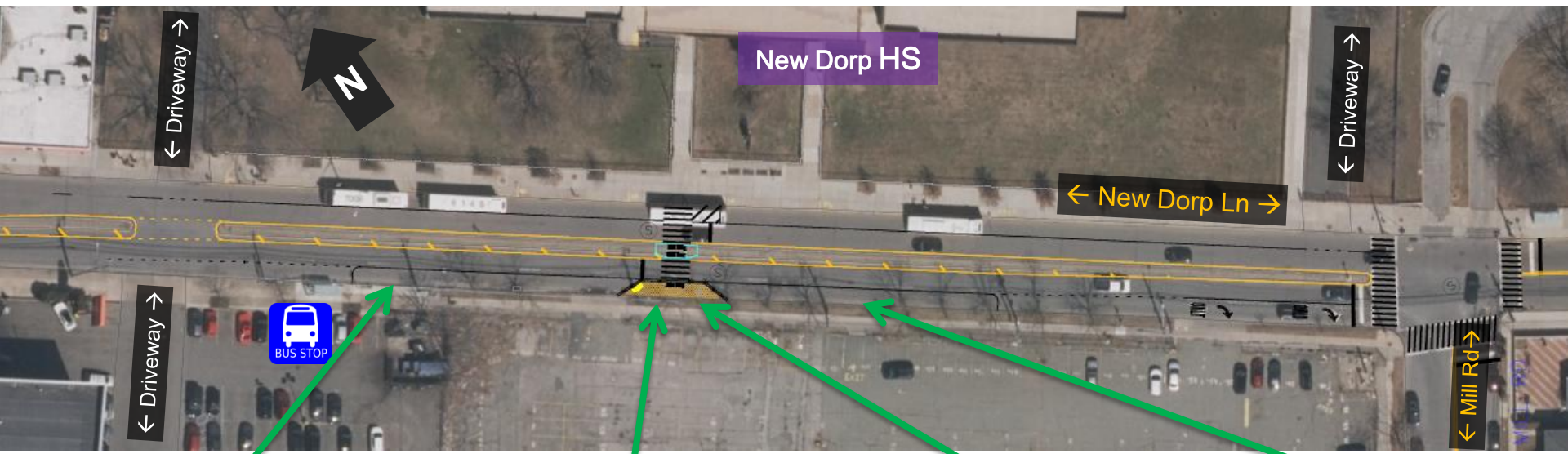
TRAFFIC VOLUME

- EB New Dorp Ln shifts from 1 lane to 2 lanes, carrying a maximum of 194 vehicles per lane per hour between shopping plaza driveway and Mill Rd



PROPOSAL

- Add safer, shorter pedestrian crossing to accommodate desire lines between school, bus stop, and drop-off on south curb



Remove one eastbound travel lane on New Dorp Ln, between shopping plaza driveway and Mill Rd (traffic analysis pending). Maintain one travel lane in each direction.

Install a signalized pedestrian crossing (approved) in front of NDHS. Expand narrow median to create ADA-accessible pedestrian crossing

Add painted curb extension to improved pedestrian visibility at crossing

Add a school loading zone on south curb of New Dorp Ln for students driven to school to unload directly to curb

THANK YOU!

Questions?



NYC DOT



NYC DOT



nyc_dot



NYC DOT