



# MYRTLE AVE AND BROADWAY

Brooklyn Community Board 3

May 6, 2019

# PROJECT BACKGROUND

- Myrtle Avenue and Broadway has a history of safety requests from public and from Community Board 3
- Located at the Myrtle Ave J/M/Z subway station, 3 bus stops at the intersection
- 58 Total injuries at the intersection
- 6 severe injuries and a 2011 pedestrian fatality
- Both Broadway and Myrtle Ave are Vision Zero Priority Corridors
- Myrtle Ave and Broadway are both local truck routes



Myrtle Ave At Broadway, BK  
Injury Summary, 2012-2016 (5 Years)

	Total Injuries	Severe Injuries	Fatalities	KSI
Pedestrian	19	1	0	1
Bicyclist	6	2	0	2
Motor Vehicle Occupant	33	3	0	3
Total	58	6	0	6

Fatalities, 01/01/2012-4/9/2018 : None

Source: Fatalities: NYCDOT  
Injuries: NYSDOT  
KSI: Persons Killed or  
Severely Injured

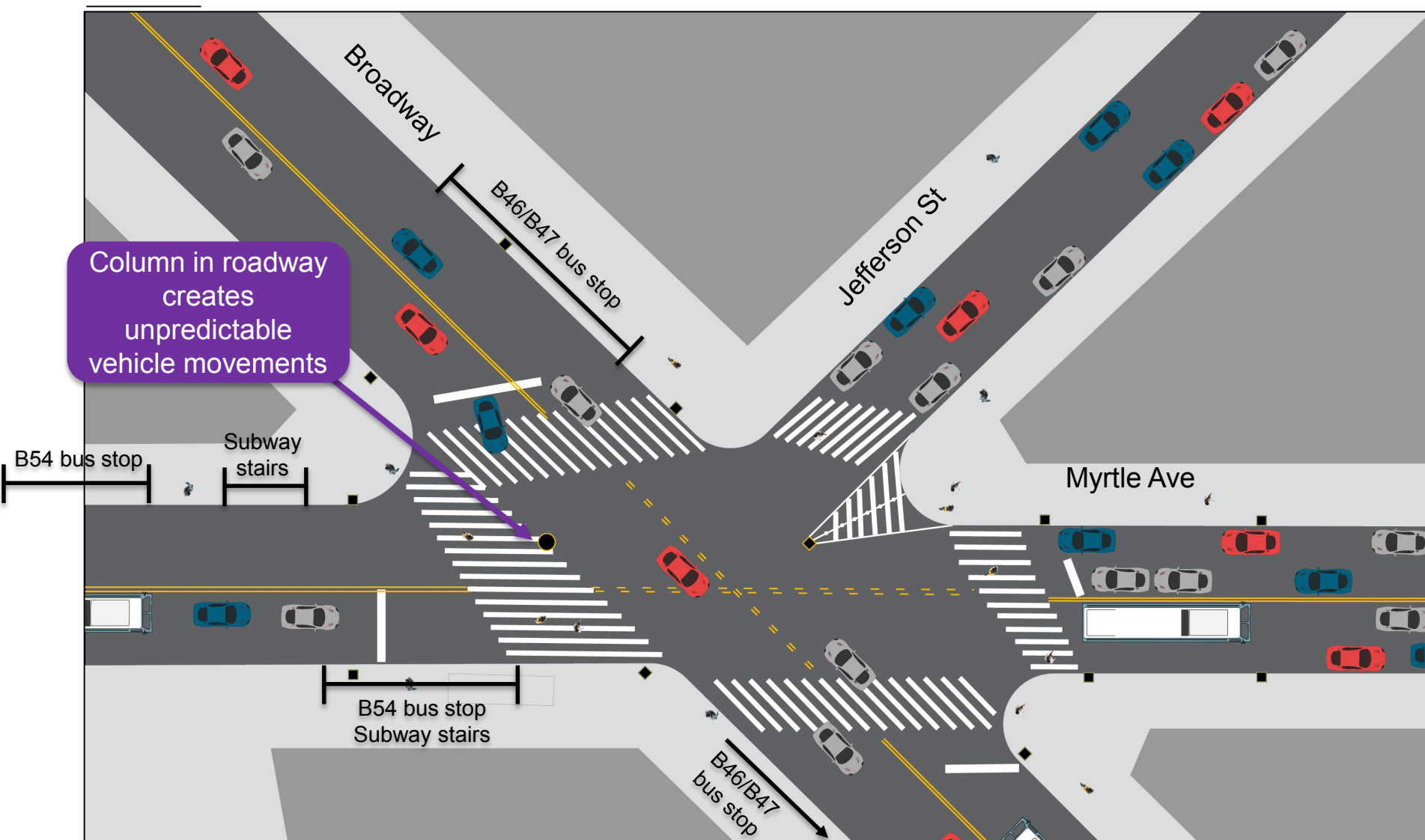


# EXISTING CONDITIONS

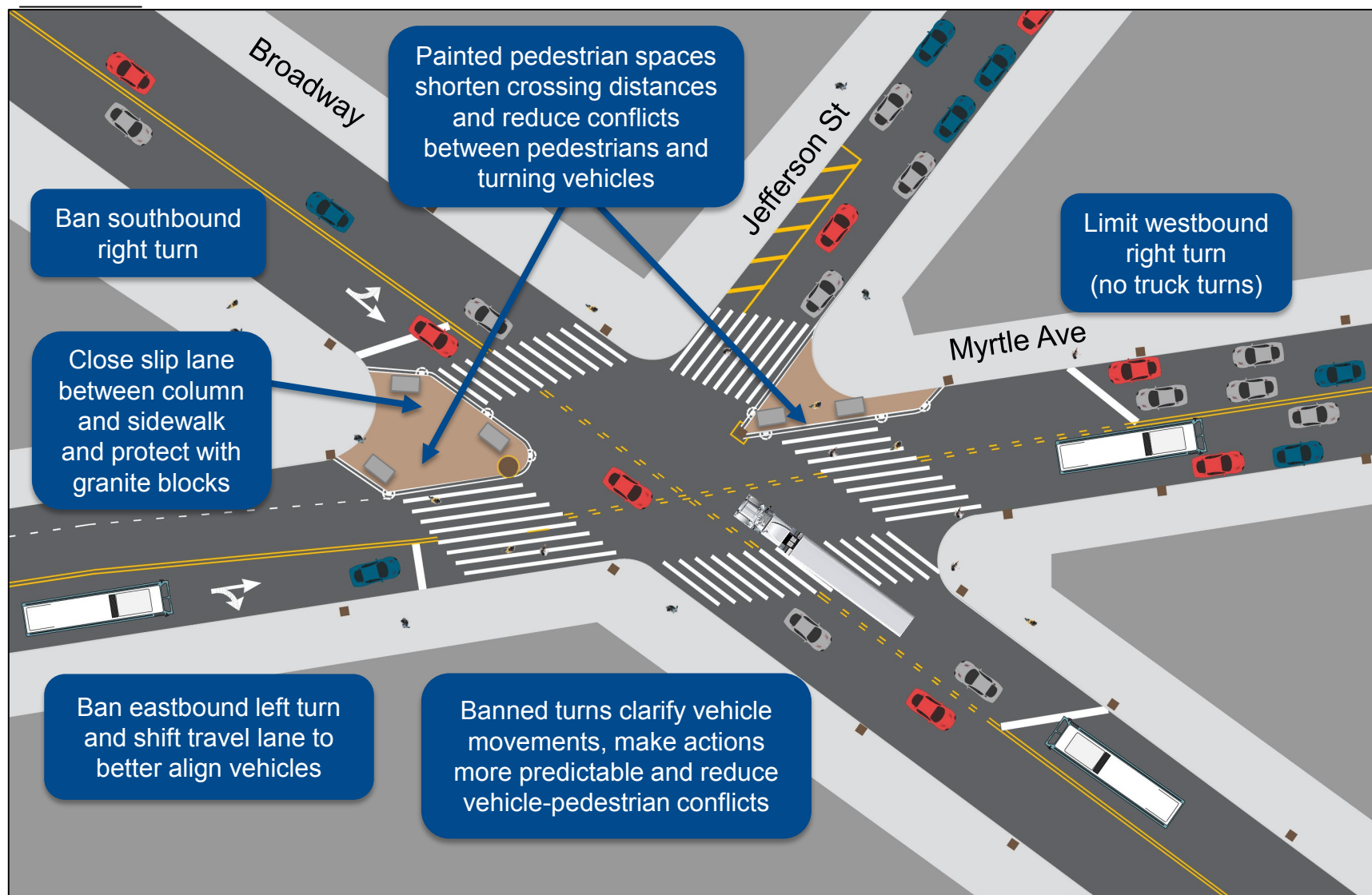
- Column located in the middle of westbound travel lane
  - Vehicles turn and drive around both sides of subway column
- Atypical angle of the intersection makes movements difficult and unpredictable
- Columns and overhead subway reduce visibility and increase conflicts between pedestrians and drivers at a crowded intersection



# EXISTING CONDITIONS

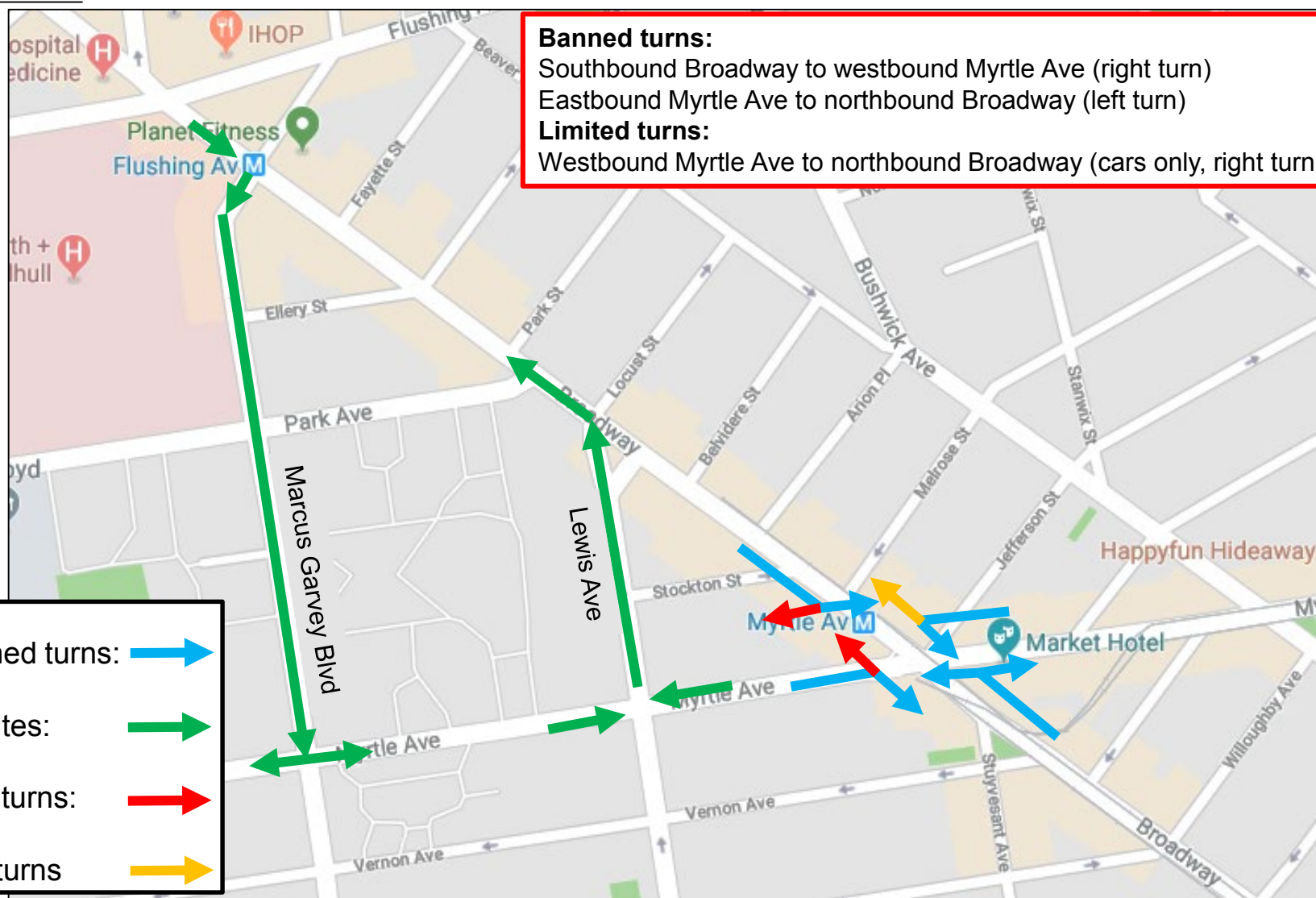


# PROPOSED CONDITIONS





# TURN BANS AND ALTERNATE ROUTES



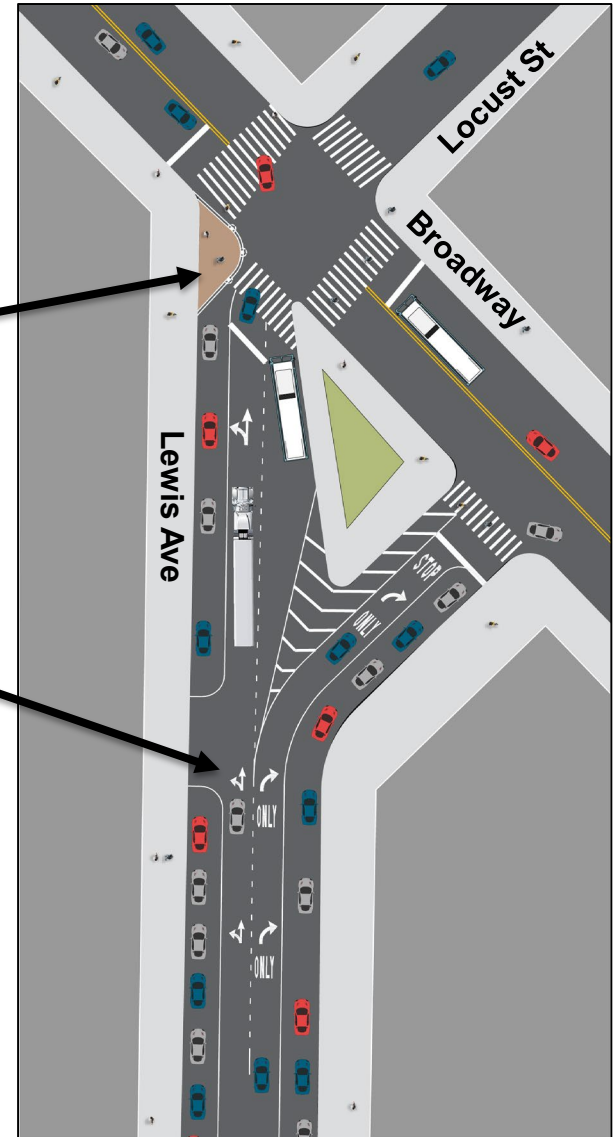
# ADDITIONAL SAFETY IMPROVEMENTS

## Lewis Ave

- Parking lane stripe between Myrtle Ave and Broadway organizes vehicles
- Painted curb extension at Lewis Ave and Broadway creates slower, safer turns and shortens pedestrian crossing distances
- Lane delineation and signage to clarify movements on Lewis Ave at Broadway
- Loss of 1 parking spot at intersection of Lewis Ave and Broadway

## Marcus Garvey Blvd

- Stripe parking lane to define travel lanes and organize vehicles between Broadway and Myrtle Ave



# BENEFITS OF PROPOSAL

- Realigns roadway to create simpler, safer movements through intersection by eliminating dangerous movements around subway columns
- Eliminates difficult turns with heavy vehicle/pedestrian conflicts
- Creates additional pedestrian space and shorter, safer crossings at a crowded transit hub
- Provides additional clarity and predictability at challenging intersection





# THANK YOU!

---

## Questions?



NYCDOT



nyc\_dot



nyc\_dot



NYCDOT

# CHANGES IN TRAFFIC VOLUMES

