



Murdock Ave and 180th Street

CB 12 Transportation Committee

April 9, 2024



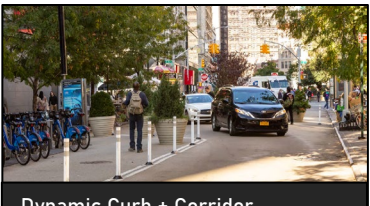
Public Realm Feedback Loop



Open Streets



Crossings + Intersections



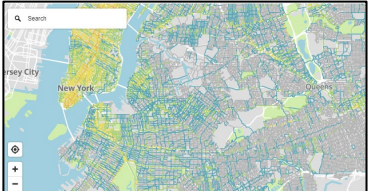
Dynamic Curb + Corridor Strategies



Community Partnership + Engagement



Premier Public Spaces



Comprehensive Planning + Policy



Equity Focused Maintenance



Programming + Concessions



Project Background

- Open Street since spring 2022 that is managed by the Addisleigh Park Civic Association
- As part of Open Streets, DOT evaluates successful locations and considers implementing design interventions that permanently transform the street into a space for pedestrians, cyclists, and the community



Addisleigh Park Civic Organization

- Mission is to promote civic pride in maintaining a stable, beautiful & desirable residential community, being active & direct liaison with community & city agencies



Existing Conditions

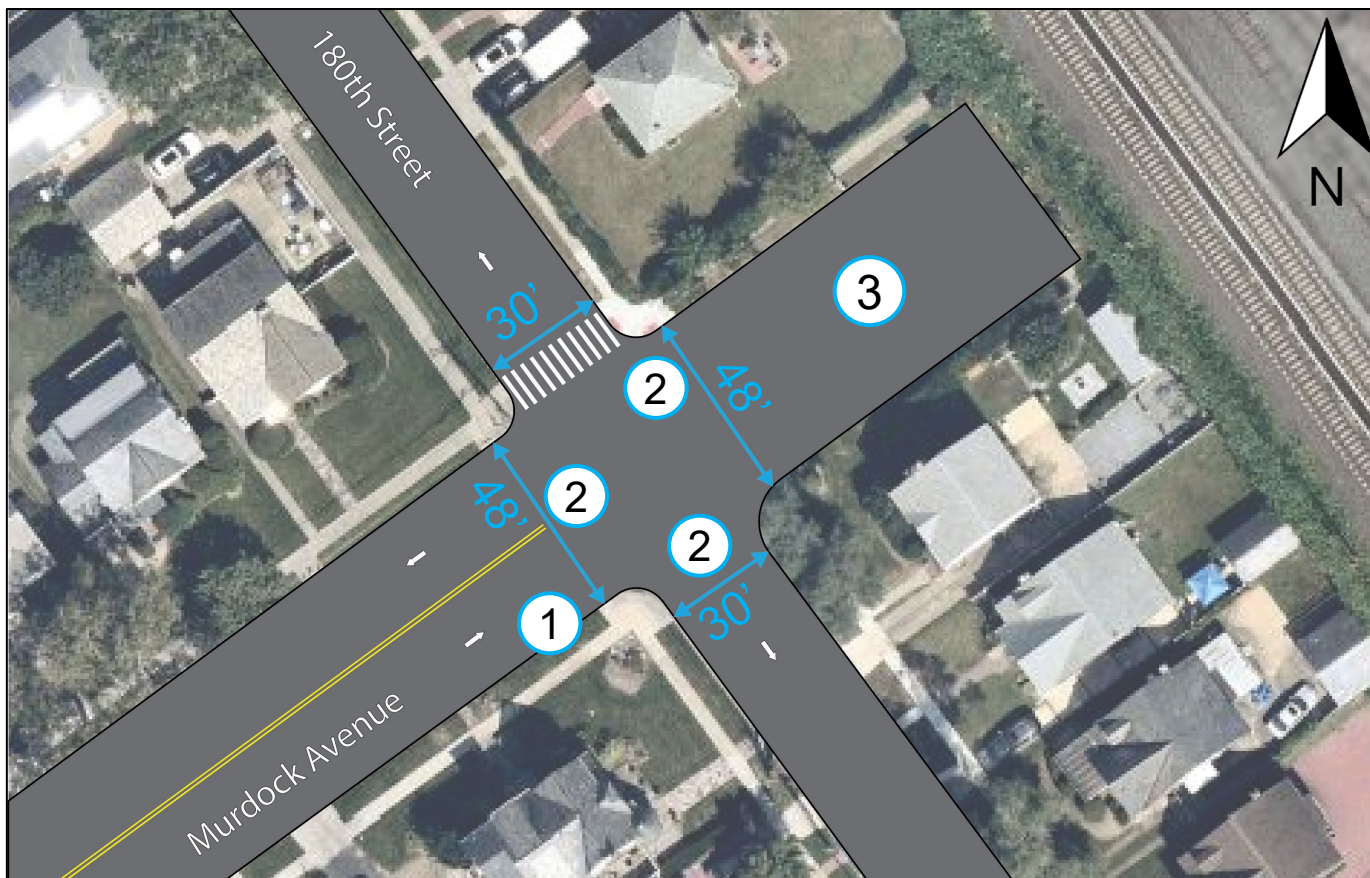


Existing Conditions



Existing Conditions

- 1 Uncontrolled intersection
- 2 Three unmarked pedestrian crossings
- 3 French barricades used as edge condition for Murdock Avenue Open Street



Proposed Design

2

Public Realm Toolkit



Asphalt Art



Flexible Delineators



Granite Blocks



Markings



Movable Furniture



Planters



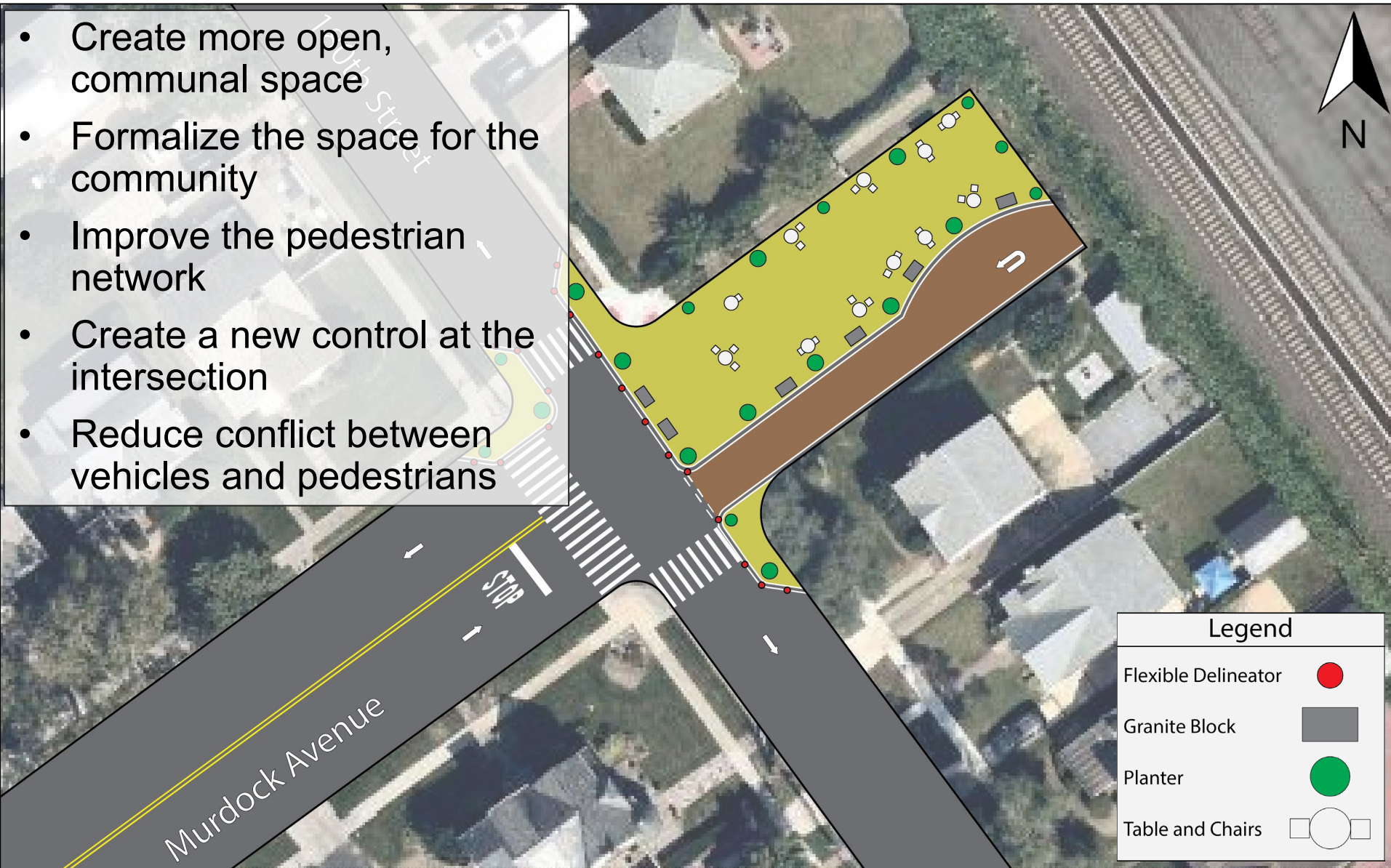
Umbrellas



Stop Controls

Project Goals

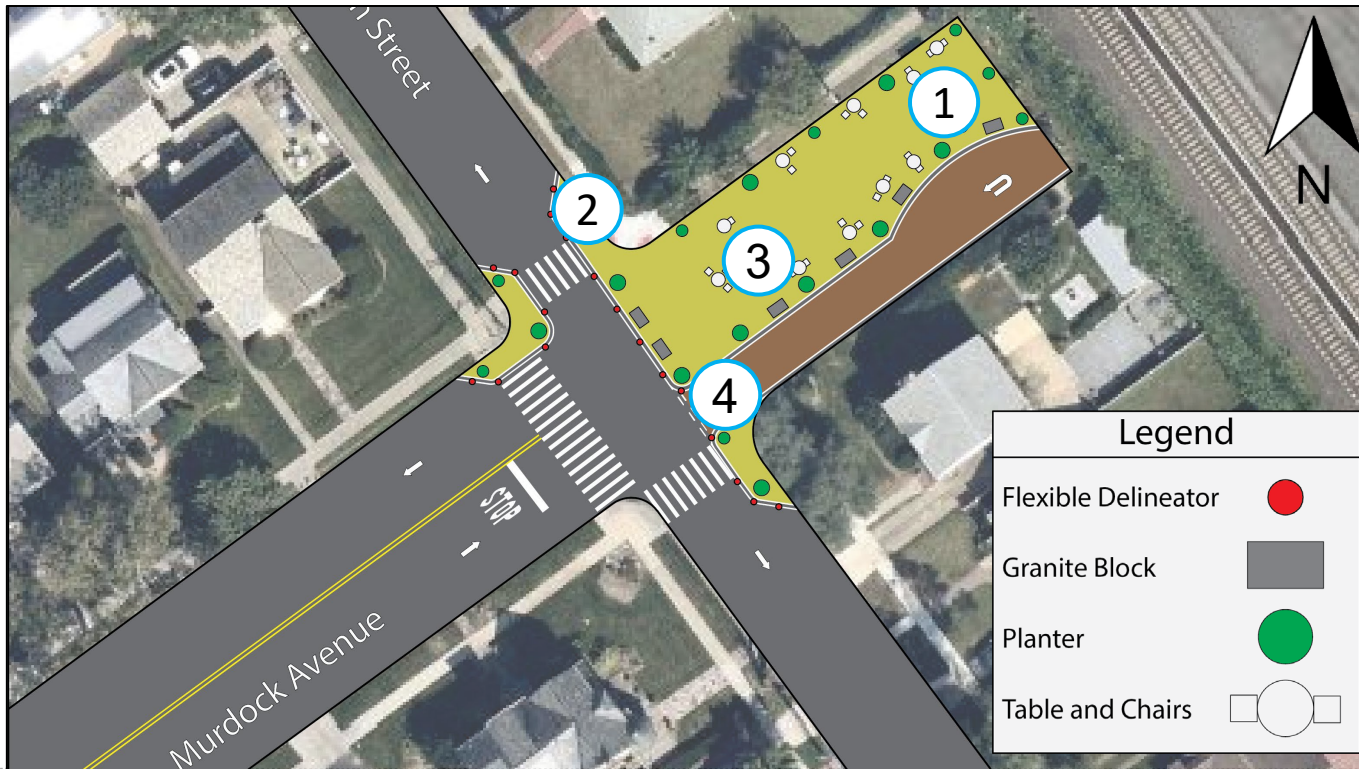
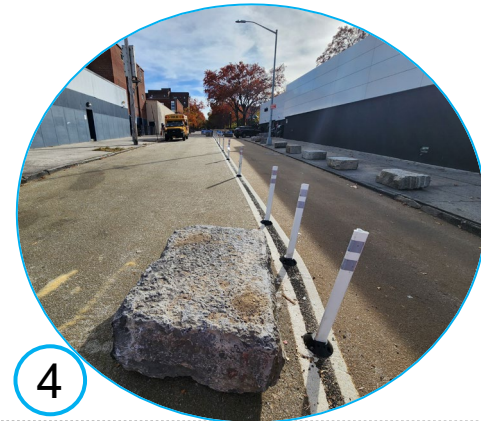
- Create more open, communal space
- Formalize the space for the community
- Improve the pedestrian network
- Create a new control at the intersection
- Reduce conflict between vehicles and pedestrians



Proposal

Plaza Features

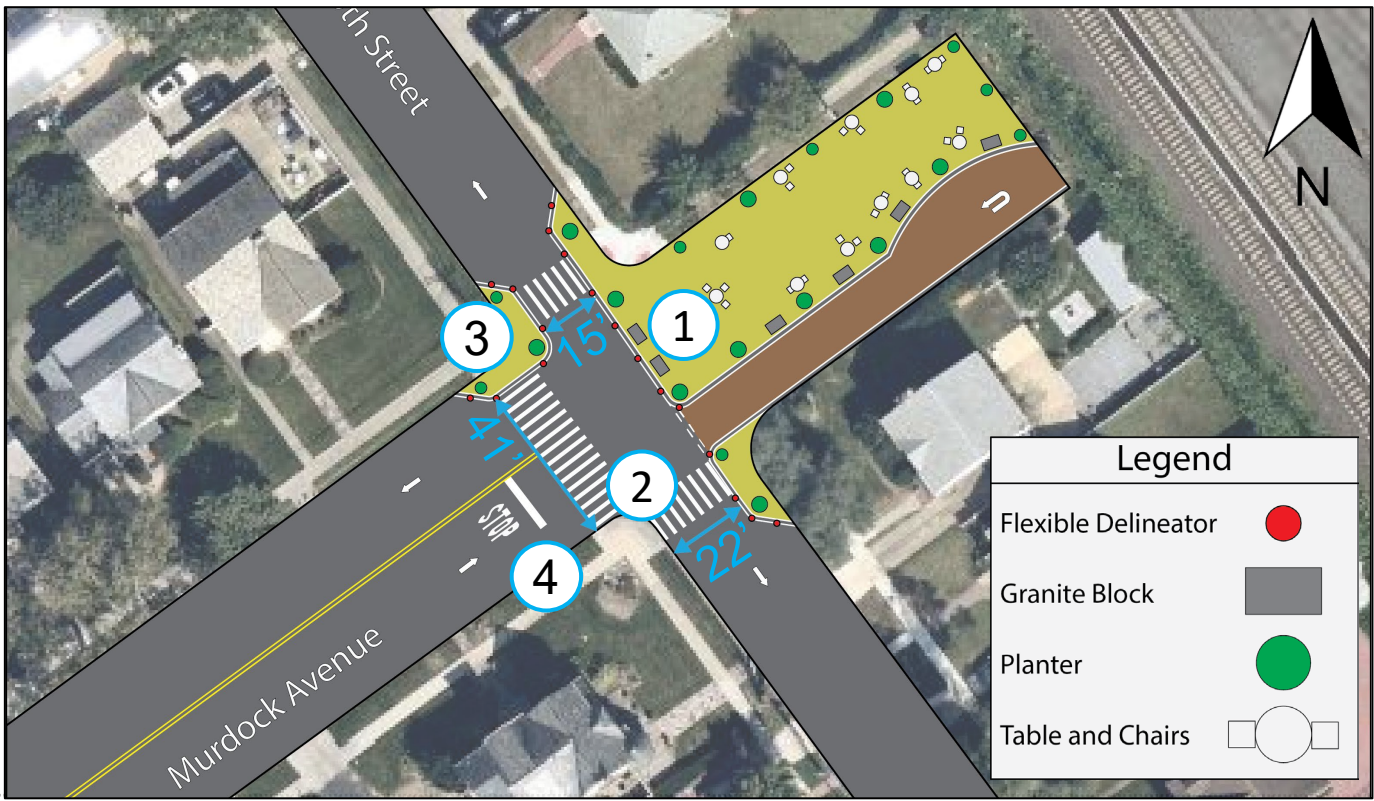
- 1 3,750 square foot plaza
- 2 Plaza edge protection with flexible delineators, granite blocks, and planters
- 3 Movable furniture
- 4 Shared street maintaining access to driveway



Proposal

Safety & Mobility Improvements

- ① Conflict free crossing to the North
- ② Crosswalk markings added to the East and South
- ③ Curb extension added to the West
- ④ Stop control added to intersection

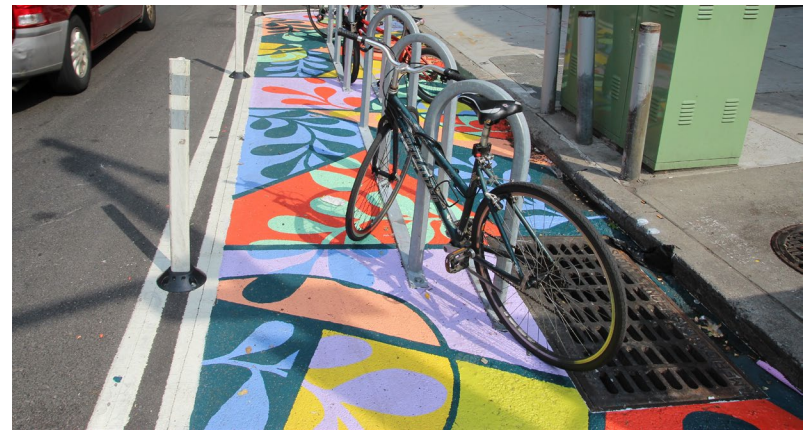


NYC DOT Art Asphalt Art

As part of NYC DOT's efforts to make our streets more pedestrian friendly, we plan on enhancing the plaza with asphalt art.

NYC DOT invites professional artists to paint temporary design treatments onto repurposed asphalt street spaces to help designate them as new safe spaces for pedestrian use and transform them into canvases for art.

NYC DOT and the Addisleigh Park Civic Organization are releasing a public RFP in the Spring.



Arterventions in partnership with 31st Avenue Open Street Collective
“Kaleidoscope” by Talisa Almonte, 2023
Astoria, Queens



Asphalt Art Activations
“Conversation at Beverley” by Misha Tyutyunik, 2023
Kensington, Brooklyn

Plaza Partnership & Management

3

Maintenance Responsibilities

The Partner is responsible for basic maintenance tasks including litter removal, snow clearance, furniture maintenance, and horticultural care.

NYC DOT works closely with all plaza partners to ensure successful public spaces.

The Public Space Equity Program provides operational and maintenance support including:

- Horticultural care
- Workforce development
- Community engagement
- Programming
- Grant writing and technical assistance



Programming

Partners are encouraged to program their plazas regularly in collaboration with local civic and cultural organization.

Any organization can apply for a SAPO permit to program the new plaza.



Programming at Avenue C Plaza in Kensington



Programming at the Beverley Open Street

Plaza Rules

- Pedestrian Plazas have specific, code of conduct rules
- These rules are part of the administrative code and are enforceable by NYPD



Jitu Weusi Plaza

Welcome!

We want you to have a safe and enjoyable time.
Be courteous and respectful to others, and
please keep the plaza clean.

Pedestrian Plaza Rules Prohibit:

- Obstruction of pedestrian traffic
- Destruction, removal or tampering of any property or equipment
- Camping
- Unattended property
- A person or their belongings taking up more than one seat
- Consumption of alcoholic beverages, except as otherwise permitted
- Skateboarding
- Feeding of undomesticated animals
- Spitting, urination, defecation
- Unreasonable noise
- Dogs off-leash



Permits are required for all events

Bicycle riding is only permitted on designated routes or
where indicated by signage or markings

OPEN TO THE PUBLIC

To learn more visit nyc.gov/plazas
or call 311

Next Steps

Spring

- NYC DOT and the Addisleigh Park Civic Organization are releasing a public RFP for asphalt art

Summer

- Street markings and delineators to be installed

Late Summer / Fall

- Asphalt art and street furniture to be installed

Thank You!

Questions?



NYCDOT



nyc_dot



nyc_dot



NYCDOT