



MOSHOLU PARKWAY & PAUL AV

Presentation to Community Board 7 Transportation Committee

March 1, 2018



PROJECT AREA

- Heavy pedestrian traffic generated by schools in area (DeWitt Clinton High School, Bronx Science)
- 4 train station at Mosholu Pkwy and Jerome Av
- Bx1/2, Bx10, Bx28 buses
- MTA Jerome Yard and Maintenance Shop
- High density residential nearby, including Tracey Towers
- Connections to major institutions such as Botanical Garden and Montefiore
- Access to Major Deegan (I-87) and Saw Mill Parkway



SAFETY DATA

- **16** total injuries from traffic crashes at Mosholu Parkway and Paul Ave intersection
- **2** pedestrian injuries
 - **1** fatality – December 26, 2011
 - Josbel Rivera, age 23, was killed in a hit and run. He was left lying in the street for two hours before someone noticed and called 911.

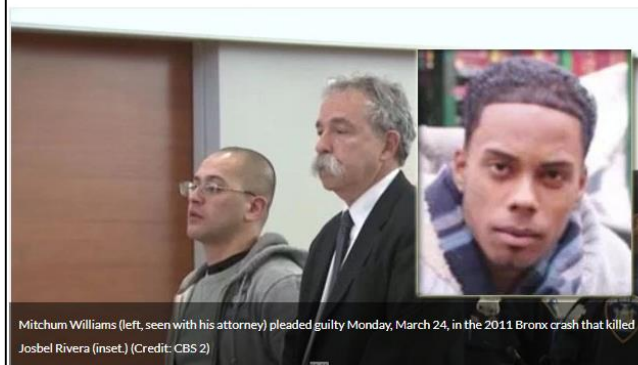
Mosholu Pkwy (Jerome Av to Sedgwick Av), Bronx Injury Summary, 2010-2014 (5 years)

	Total Injuries	Fatalities
Pedestrian	2	1
Bicyclists	0	0
Motor Vehicle Occupant	14	0
Total	16	0

Family Emotional As Man Pleads Guilty In Deadly 2011 Bronx Hit-And-Run

March 24, 2014 at 5:10 pm

Filed Under: 238th Street, Belkys Rivera, Bronx, fatal hit-and-run, Hit-and-Run, Jaasiel Rivera, John Slattery, Josbel Rivera, Kingsbridge, Mitchum Williams, Mos Parkway, Review Place, Suzuki Vitara, The Bronx, Vehicle Torched



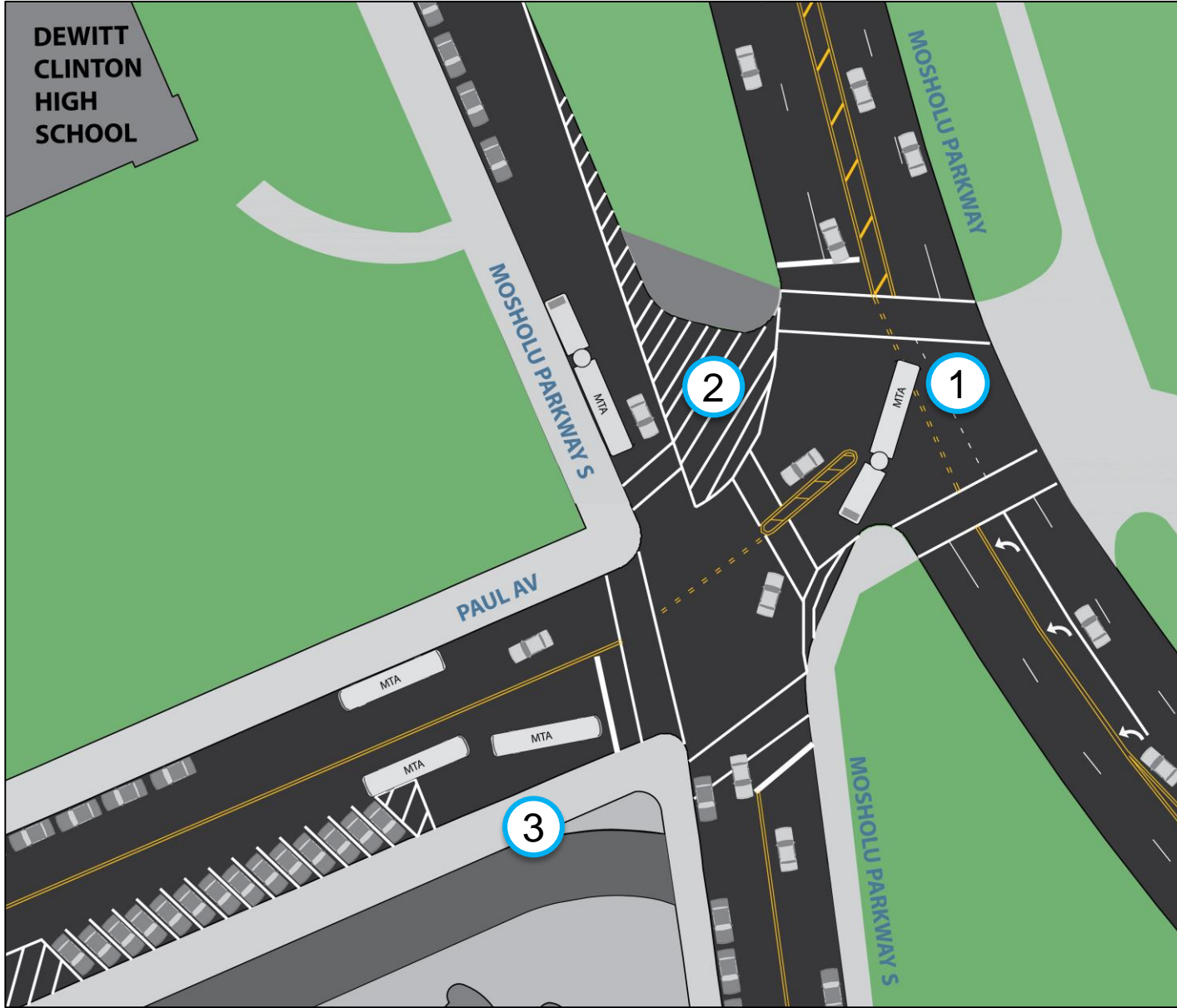
Mitchum Williams (left, seen with his attorney) pleaded guilty Monday, March 24, in the 2011 Bronx crash that killed Josbel Rivera (inset.) (Credit: CBS 2)

'JUSTICE FOR JOSBEL AND AN END TO PUNISHLESS CRIMES!' SAY ELECTED OFFICIALS, ADVOCATES



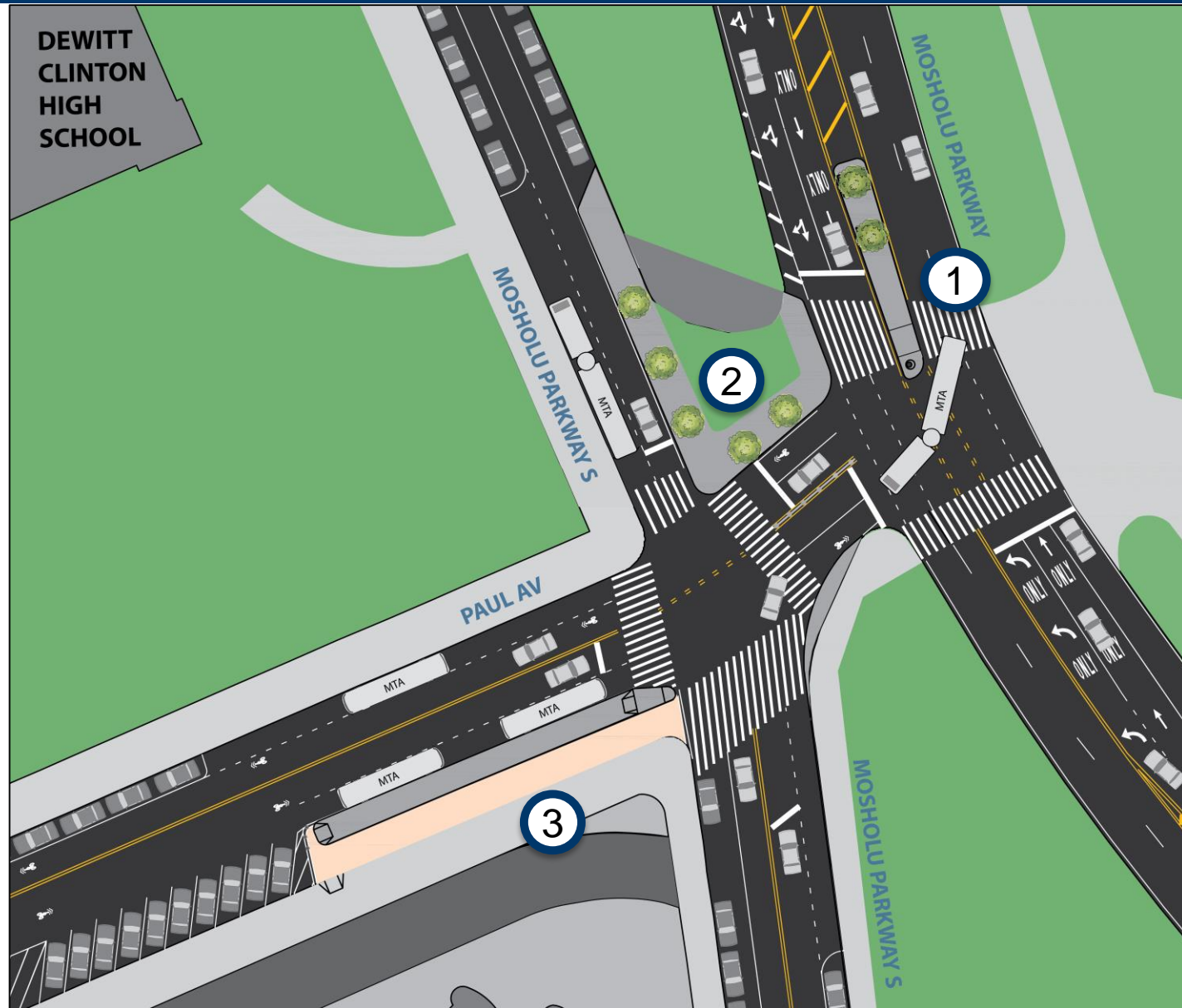
EXISTING CONDITIONS – MOSHOLU PKWY & PAUL AV

- 1 Head on conflicts with pedestrians from turning vehicles
- 2 Unprotected pedestrian space
- 3 Substandard bus operations



MOSHOLU PKWY & PAUL AV PROPOSAL – FUTURE BUILD

- 1 Add pedestrian island to shorten crossing distances and calm turns
- 2 Add concrete sidewalk extension with landscaping (under investigation)
- 3 Add concrete bus boarding island with painted sidewalk extension to improve bus operations

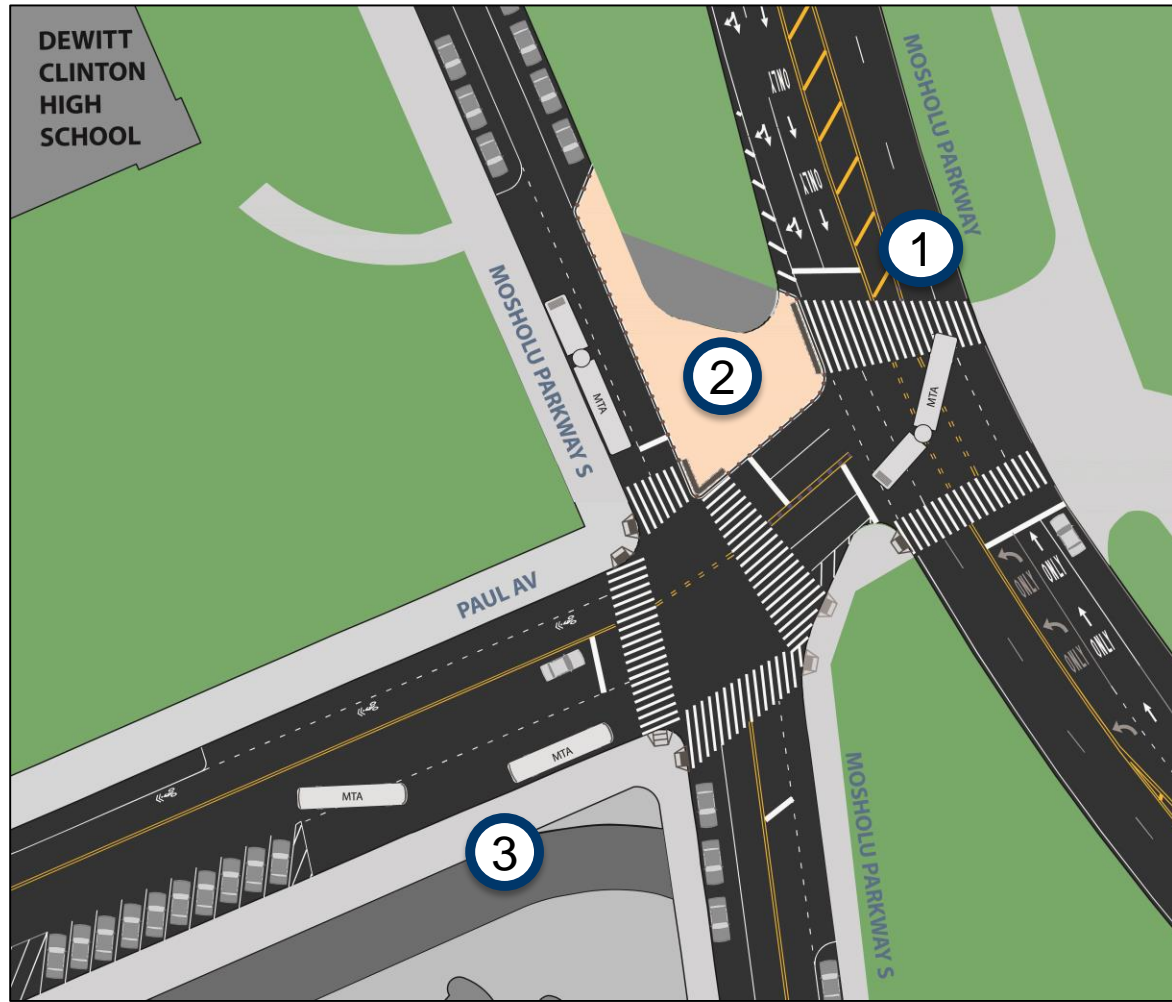
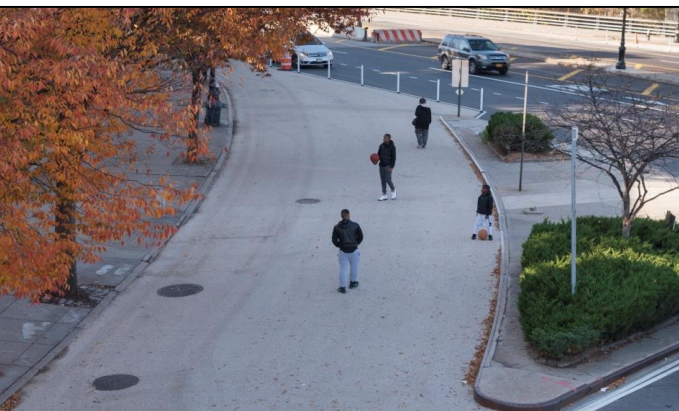


MOSHOLU PKWY & PAUL AV PROPOSAL – INTERIM (2018)

- 1 Install left turn traffic calming treatment



- 2 Install painted pedestrian space with flexible delineators



- 3 Install parking changes to ease bus movements.

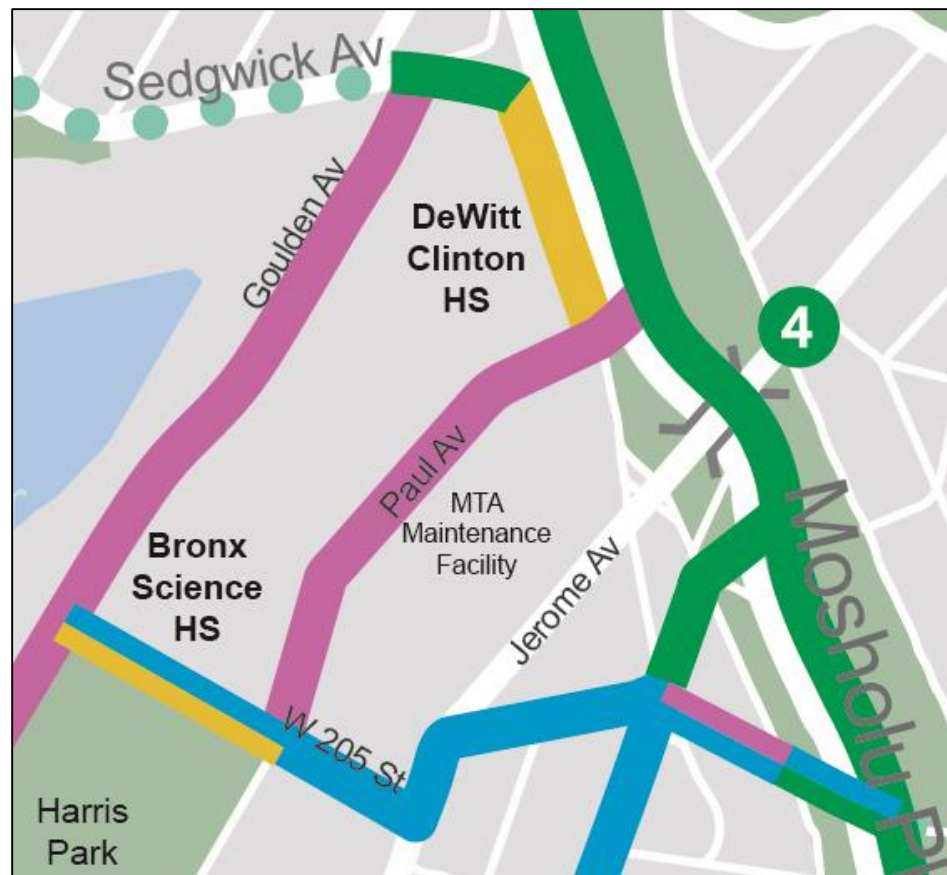
PROPOSED BICYCLE NETWORK UPGRADES

Upgrade signed route to shared lanes on Paul Av between W 205 St and Mosholu Parkway

- Provides wayfinding and indicates safe place on street to bike
- Alerts drivers to presence of people riding bikes
- No impact on parking or moving lanes



Crotona Av, Bronx



Protected Bicycle Lane



Conventional Bicycle Lane



Shared Lane



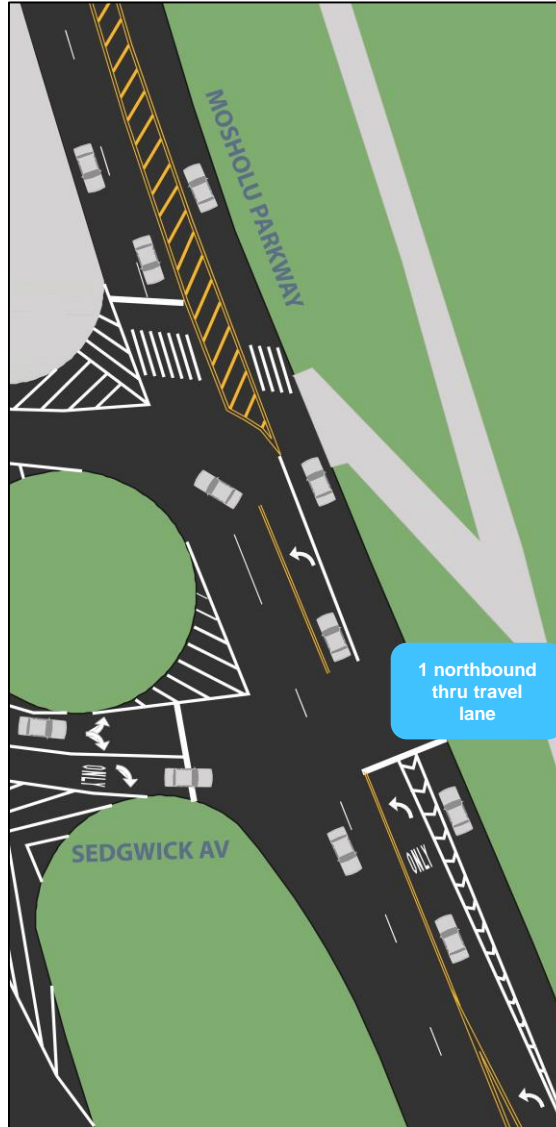
Signed Route

MOSHOLU PKWY & SEDGWICK AV PROPOSAL

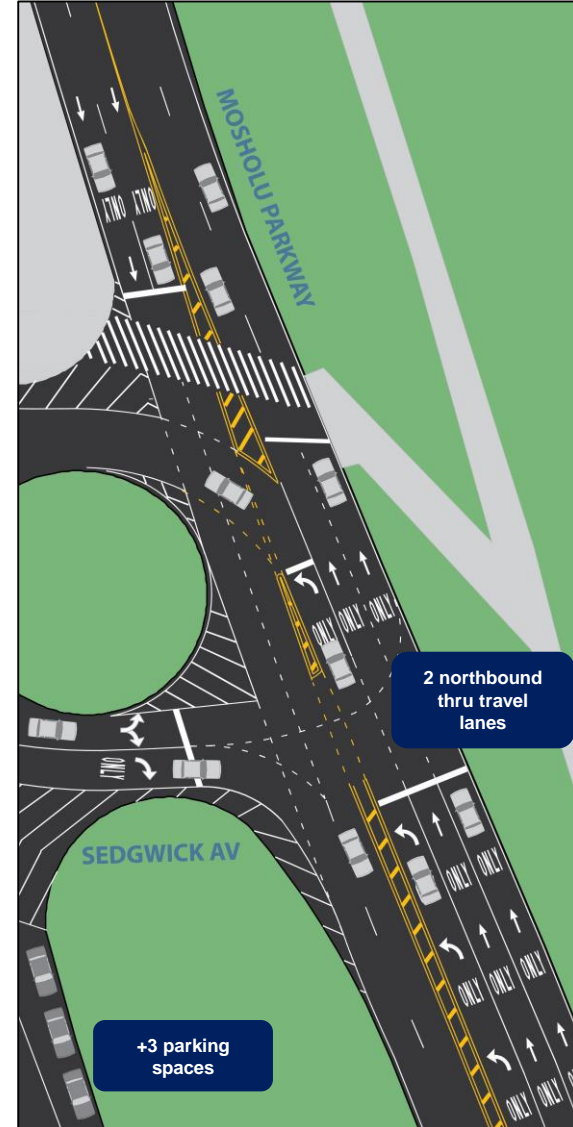
Re-align lanes to maintain 2 northbound travel lanes between Paul Avenue and Gun Hill Rd



EXISTING



PROPOSED





THANK YOU

Questions?



NYC DOT



NYC DOT



nyc_dot



NYC DOT