



# Morris Park Ave – Street Improvement Project

Bronx CB11 – May 11, 2026



# Morris Park Ave, from Yates Ave to Newport Ave SIP – Project Limits



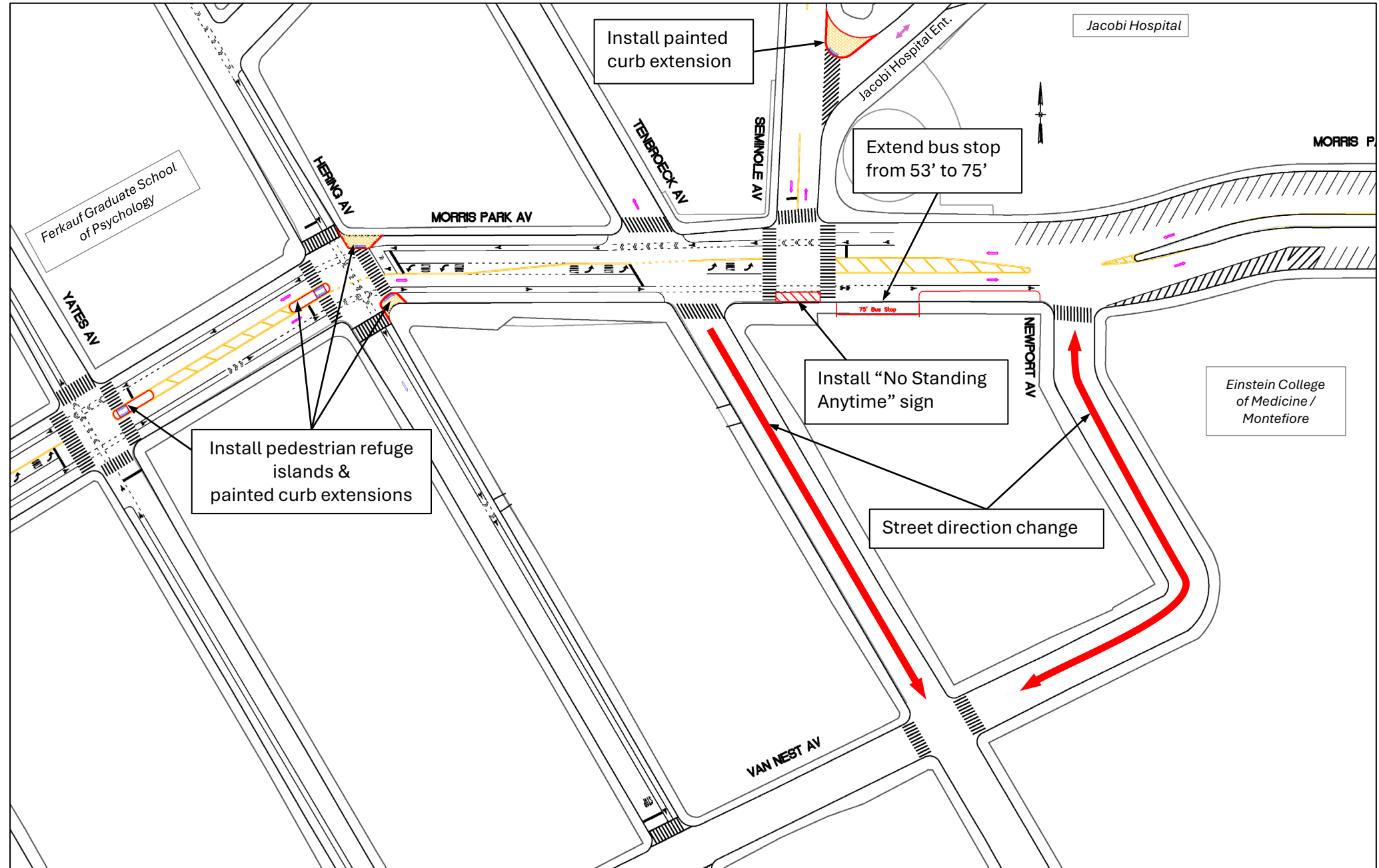
# Morris Park Ave, from Yates Ave to Newport Ave SIP - Issues

- Long pedestrian crossing distance on Morris Park Ave at Yates and Hering Avenues, near Ferkauf Graduate School of Psychology.
- Two closely spaced intersections (50-60 feet apart) on Morris Park Ave between Tenbroeck and Seminole Avenues create operational conflicts and EB queuing towards Seminole Ave (signalized).
- There are also challenging turning movements such as NB right turn from Tenbroeck Ave onto EB Morris Park Ave and left turns onto NB Seminole Ave.
- The EB far side bus stop on Morris Park Ave at Seminole Ave is undersized (53'). With two parked vehicles along the south curb of the T-intersection, buses are unable to fully access the stop, resulting in obstruction of through traffic and partial blockage of the through lane.
- Long crosswalk on Seminole Ave at the NE corner of Jacobi Hospital's SW entrance ramp.

## Morris Park Ave, from Yates Ave to Newport Ave SIP – Proposed Improvements

- Install one pedestrian refuge island at Morris Park Ave and Yates Ave (east leg) and upgrade all corners/with ADA ramps.
- Install two painted neckdowns (east leg) and one pedestrian refuge island (west leg) at the Morris Park Ave and Hering Ave intersection.
- Extend the EB far side bus stop on Morris Park Ave at Seminole Ave from 53' to 75'.
- Install “No Standing Anytime” regulation along the south curb of Morris Park Ave at the T-intersection.
- Reverse Tenbroeck Ave from one-way NB to one-way SB and convert Newport Ave from one-way SB to two-way between Morris Park and Van Nest Aves.
- Install one painted neckdown at the NE corner of Seminole Ave at Jacobs Hospital’s SW entrance ramp.

# Morris Park Ave, from Yates Ave to Newport Ave SIP - Proposed



---

# Questions

Thank You!



NYCDOT



nyc\_dot



nyc\_dot



NYCDOT