



MORRIS PARK AVE

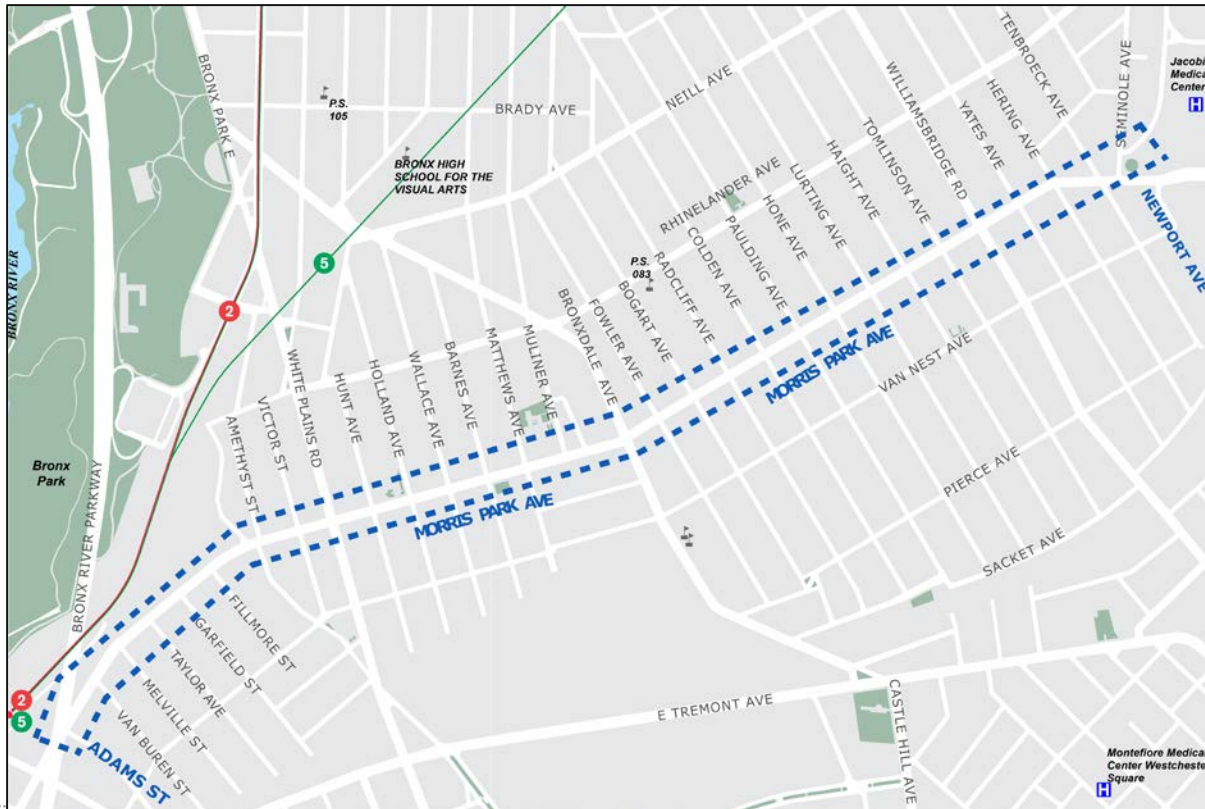
Presentation to Bronx Community Board 11
January 8, 2018



*Lily Gordon-Koven
Research, Implementation, & Safety*

PROJECT LOCATION

- Project limits: Morris Park Ave, Adams St to Newport Ave
- Community Board 11
- Retail commercial corridor
- Bx21 and Bx10 buses
- Local truck route

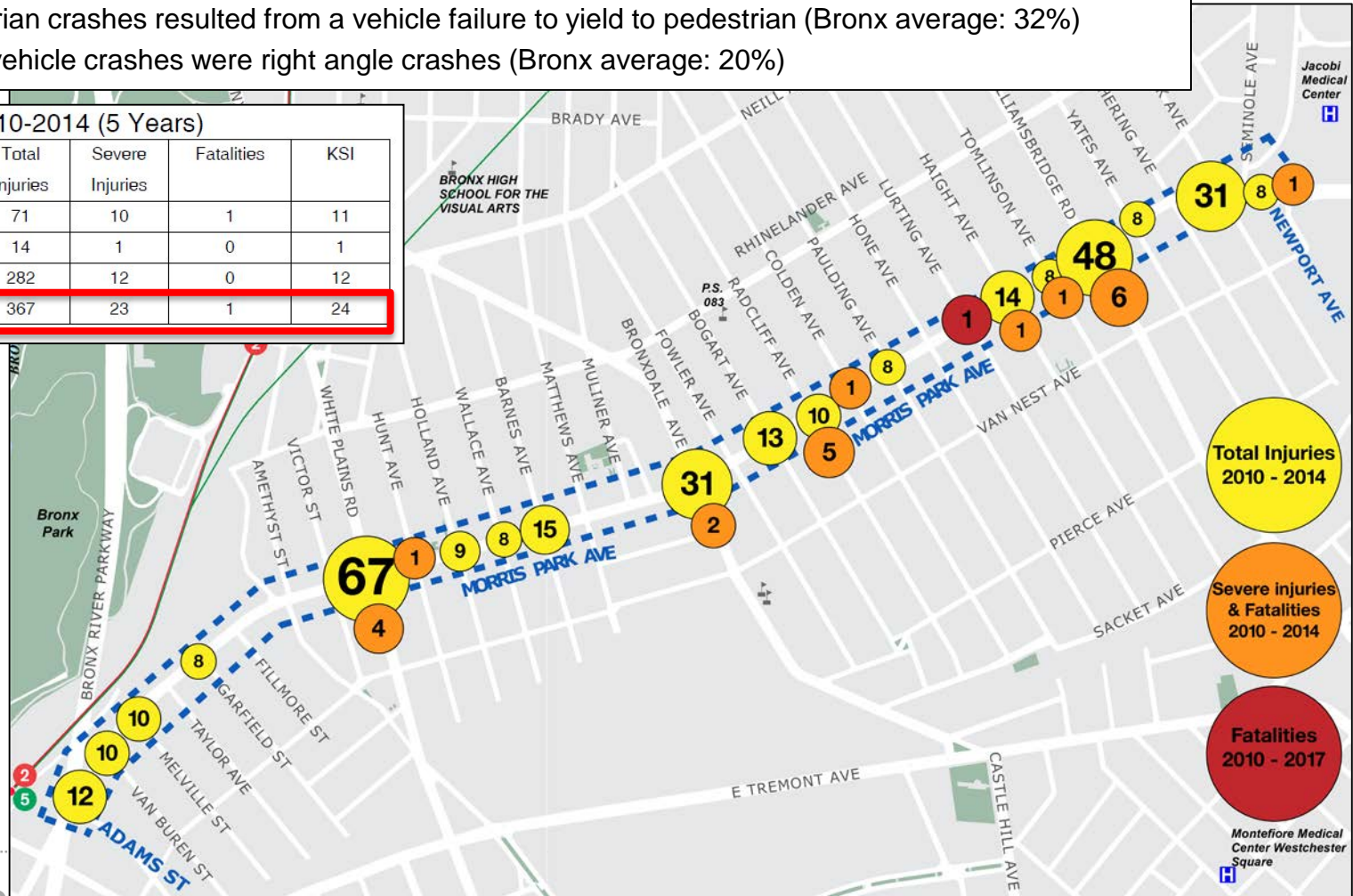


SAFETY DATA: 2010-2014

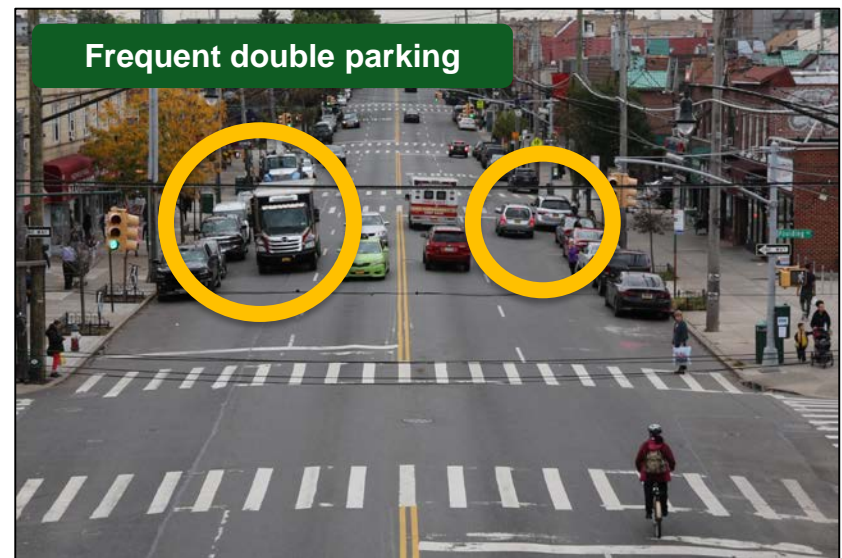
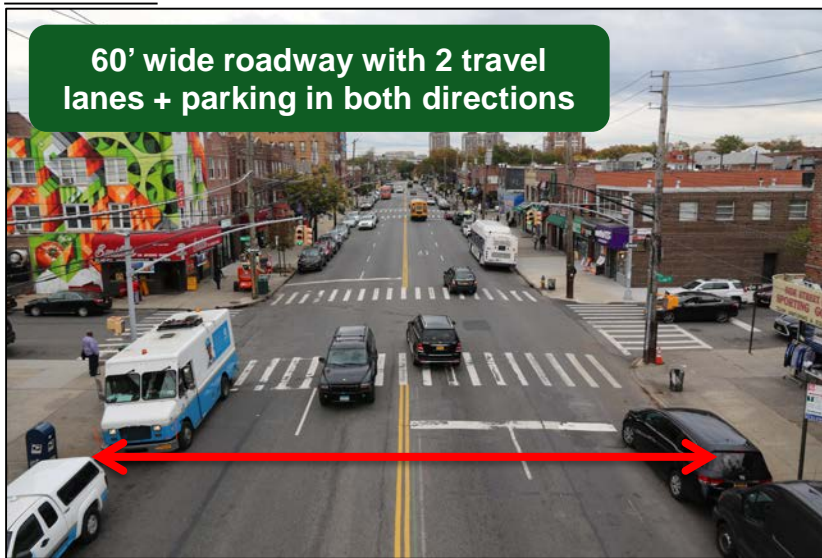
- Morris Park Avenue is a Vision Zero Priority Corridor with 7.6 pedestrians killed or severely injured per mile
- Morris Park Ave and White Plains Rd is a Priority Intersection
- High Pedestrian Crash Location at Morris Park Ave & Williamsbridge Rd
- 50% of pedestrian crashes resulted from a vehicle failure to yield to pedestrian (Bronx average: 32%)
- 27% of motor vehicle crashes were right angle crashes (Bronx average: 20%)

Injury Summary, 2010-2014 (5 Years)

	Total Injuries	Severe Injuries	Fatalities	KSI
Pedestrian	71	10	1	11
Bicyclist	14	1	0	1
Motor Vehicle Occupant	282	12	0	12
Total	367	23	1	24



EXISTING CONDITIONS

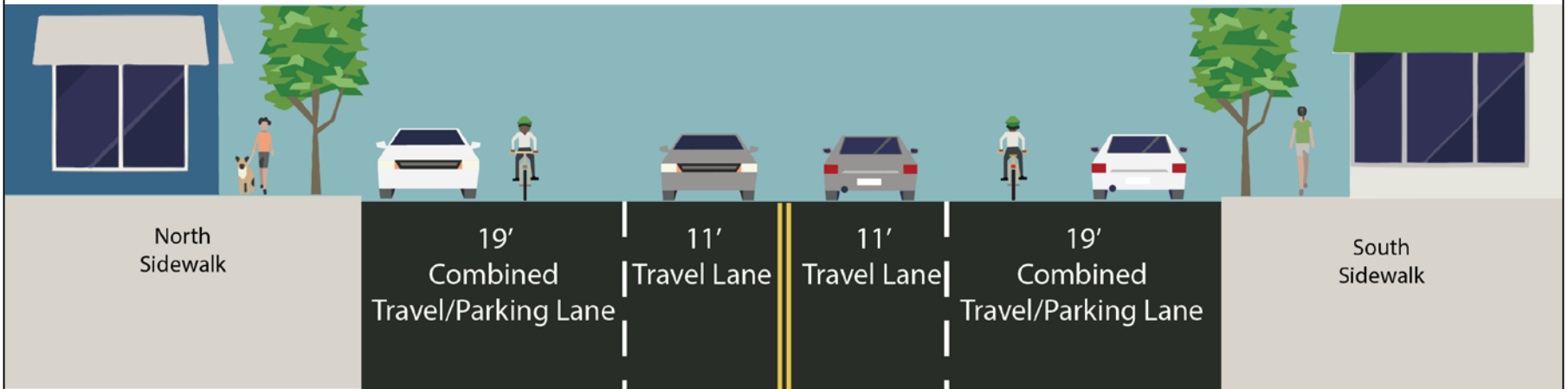


High speeds (27% of vehicles above speed limit)

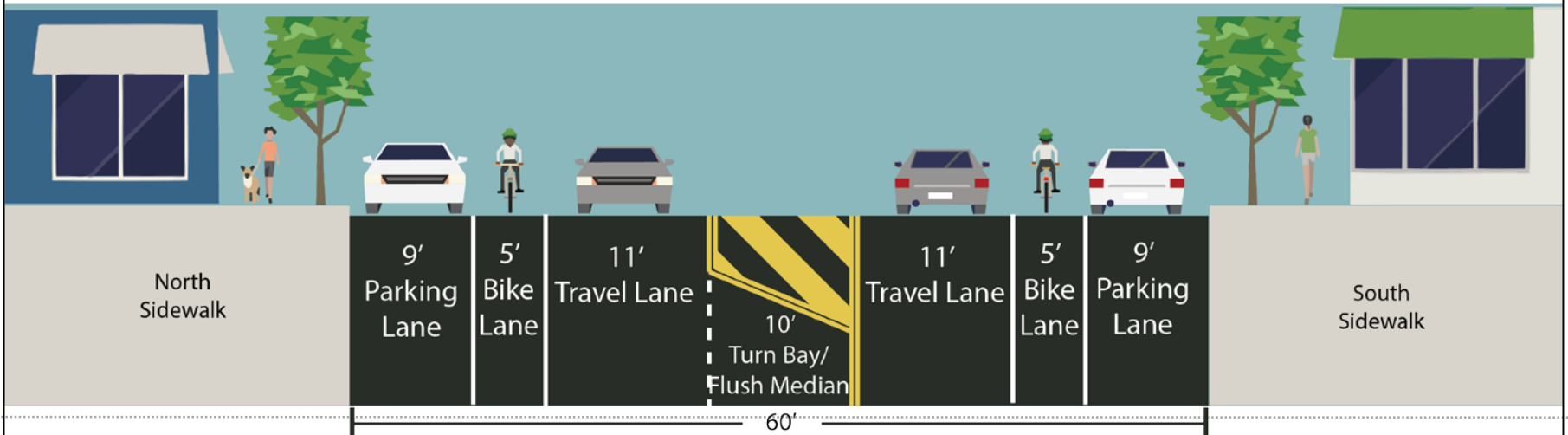
CORRIDOR PROPOSAL DETAILS

Melville St to Newport Ave

EXISTING

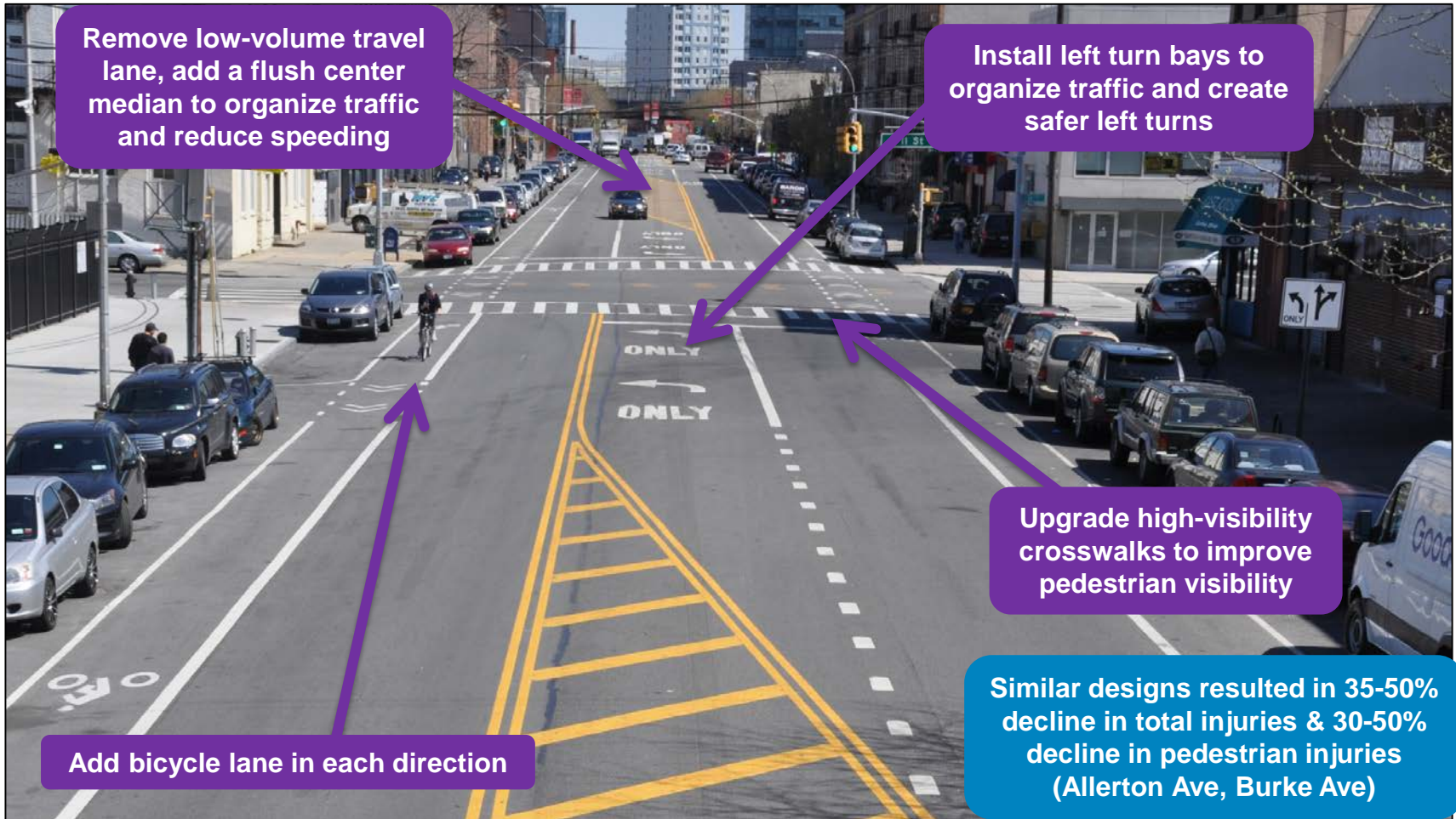


PROPOSED



CORRIDOR PROPOSAL DETAILS

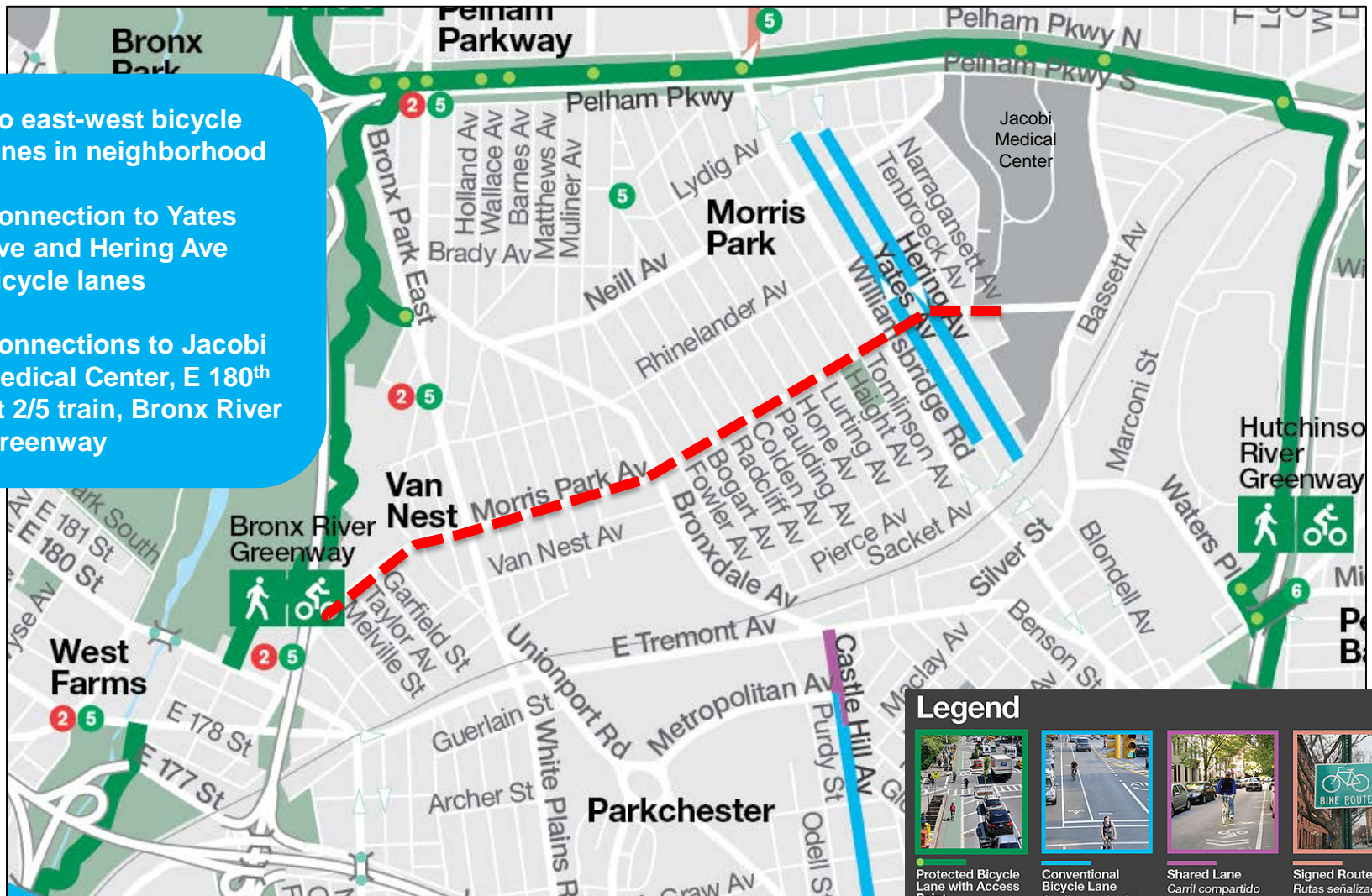
Melville St to Newport Ave



Example of Proposed Treatment: 44th Drive, Queens

LIMITED BICYCLE CONNECTIONS IN MORRIS PARK

- No east-west bicycle lanes in neighborhood
- Connection to Yates Ave and Hering Ave bicycle lanes
- Connections to Jacobi Medical Center, E 180th St 2/5 train, Bronx River Greenway



Legend

Protected Bicycle Lane with Access Point Camino protegido para bicicletas con punto de acceso 有出入口自行车专用道	Conventional Bicycle Lane Carril para bicicletas 腳踏車道	Shared Lane Carril compartido 共用車道	Signed Route Rutas señalizadas 未划分路段

DESIGN ADJUSTMENTS

Ban southbound left turns from Unionport Rd (create right turn only lane)



PROJECT OUTREACH

Merchant Surveys

- 111 businesses visited
- 88 surveys completed
- Key Findings:
 - 64% of delivery vehicles typically double-park when accessing businesses
 - Majority of businesses rely on on-street parking for customer access (only 7% have private parking lots)
 - 70% of deliveries take less than 15 minutes
 - 68% of businesses receive deliveries from box trucks

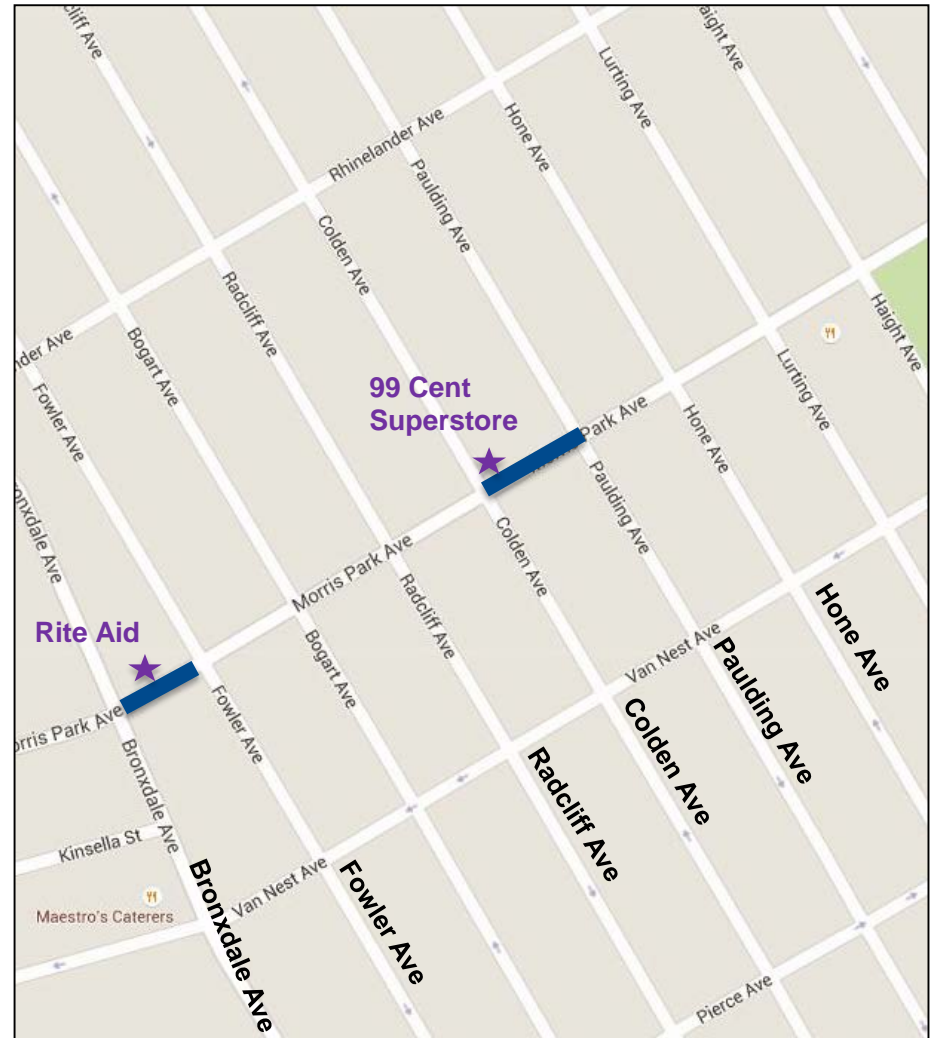


CORRIDOR PROPOSAL DETAILS

Add truck loading zones to address double parking

Locations

- Bronxdale Ave – Fowler Ave
 - Evening hours
 - 30' on north curb
- Colden Ave – Paulding Ave
 - Morning hours
 - 30' on north curb



BENEFITS OF PROPOSAL

- Proposed design organizes traffic, reduces speeding, and creates safer left turns
- Bicycle lane adds 1.4 miles to the bicycle network and creates safe bicycle connections in Morris Park neighborhood
- High visibility crosswalks make pedestrians more visible to drivers
- Loading zones minimize double parking on retail corridor



Proposed Conditions: Flush median and turn bay on Bronxwood Ave, Bronx

THANK YOU!

Questions?

Contact: Bronx Borough Commissioner's Office at (212) 748-6680 or kkalb@dot.nyc.gov



NYCDOT



nyc_dot



nyc_dot



NYCDOT