

Merrick Blvd Bus Lanes

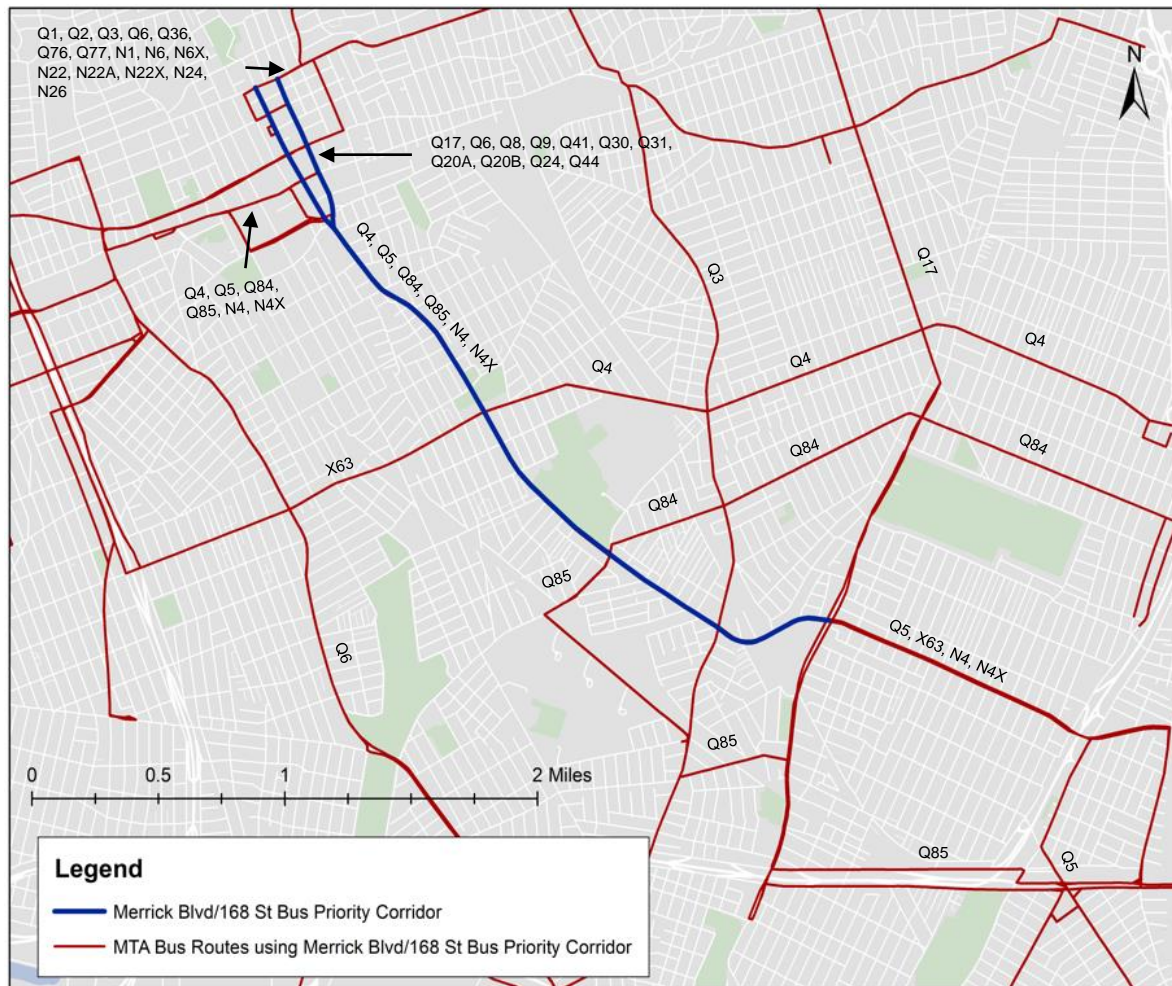
NYC DOT | Better Buses Restart | February 16, 2021

Merrick Blvd, Queens



Corridor Description

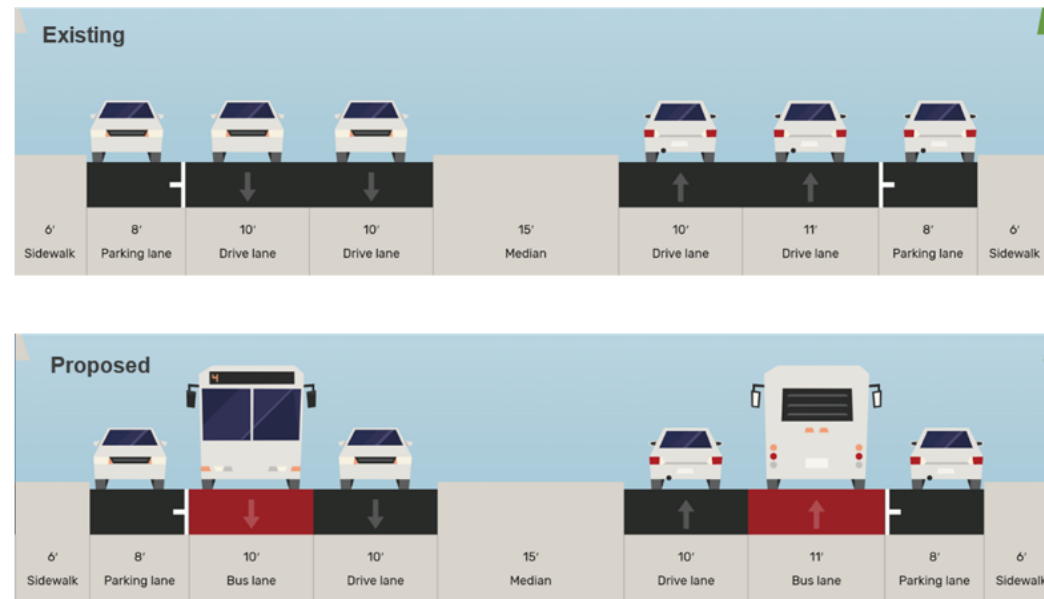
- Merrick Blvd and 168 St between Hillside Ave and Springfield Blvd
- 3.2 mile, mostly commercial corridor
- Served by Q4, Q5, Q84, Q85, X63, N4 and N4X routes south of Archer Ave
- Many more routes circulate on Merrick/168 St north of Archer Ave
- Serves 94,000 daily riders



Merrick Blvd Bus Lanes Plan

DOT Bus Lanes

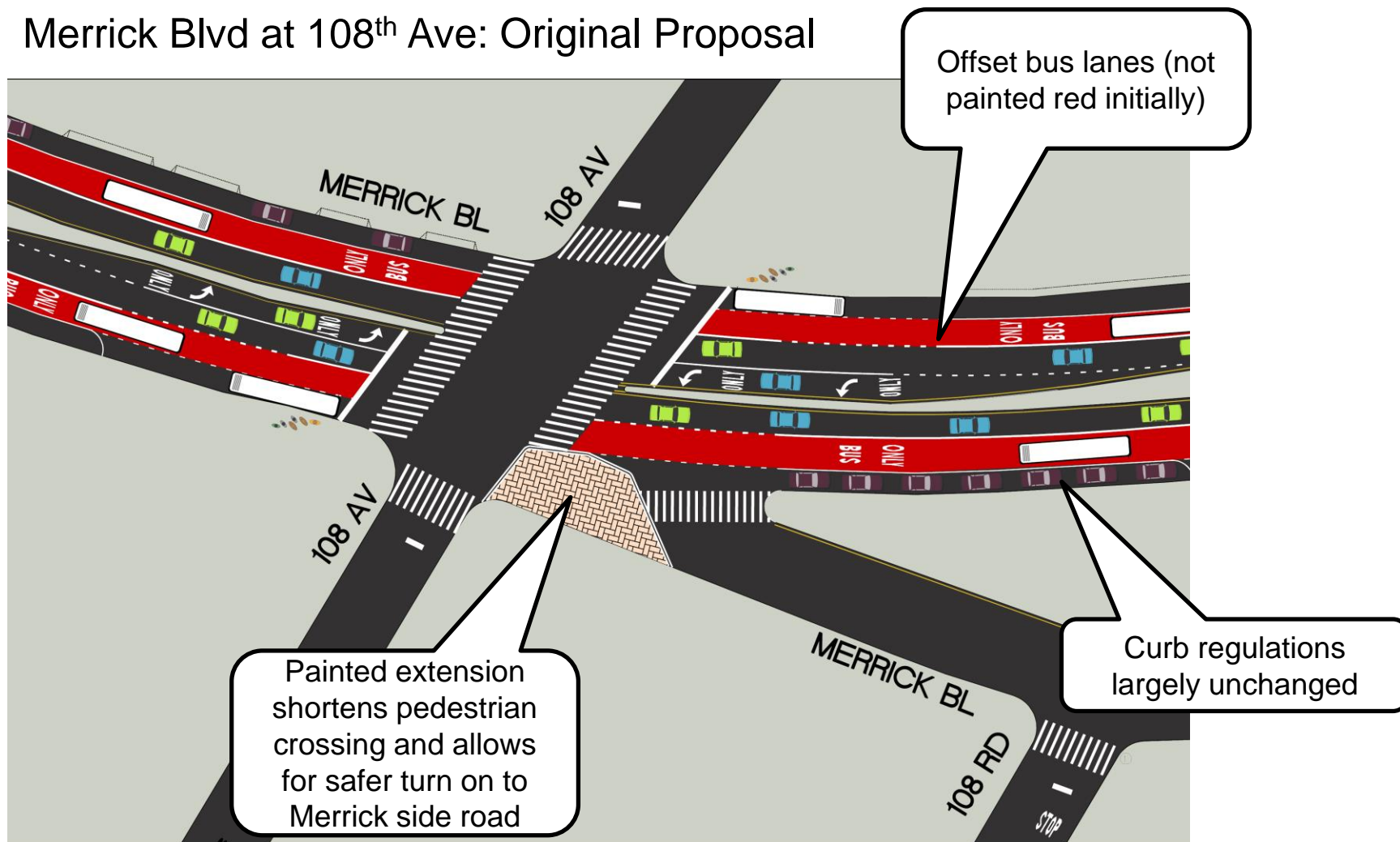
- Offset bus lanes (one lane out from the curb)
- 6.4 miles in total
- Enforcement cameras after implementation
- Pedestrian safety elements
- Revisions to bus stop spacing to improve speed and reliability



Merrick Blvd and 168th St between Springfield Ave and Archer Ave design concept

Merrick Blvd Bus Lanes Plan

Merrick Blvd at 108th Ave: Original Proposal



Implementation Progress

- White bus lane markings and signage are finished and bus lanes in effect
 - Except 0.5 mile section northbound between 109th Ave and Liberty Ave
- Added pedestrian extensions at Merrick Blvd & 108th Ave and Merrick Blvd & 109th Ave
- DOT and MTA monitoring bus and traffic conditions



109th Avenue-Liberty Avenue Gap

- After consultation with CAB, DOT postponed implementation of a 0.5 mile section northbound between 109th Avenue and Liberty Avenue
- DOT will be reevaluating to determine if a curbside or offset lane is the most effective design
- DOT has met with businesses along this stretch multiple times & continues to address parking concerns with PD/DSNY
- Outreach continues into Spring 2021



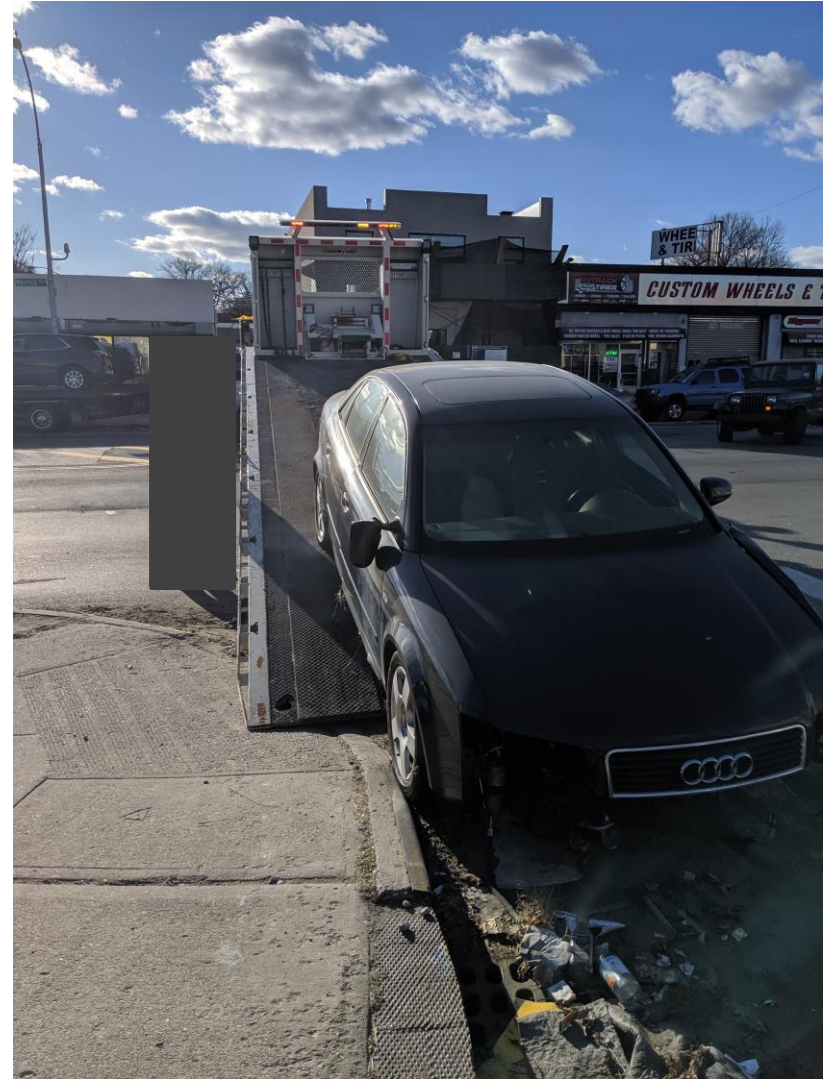
Outreach

- **6/8** – Mayor de Blasio announces Better Buses Restart projects
- **8/3** – Kickoff CAB Meeting
- **8/17** – DOT in-person outreach to businesses
- **8/27** – Second CAB Meeting
- **9/3** – DOT in-person outreach to businesses
- **9/17** – Walkthrough with DOT, CB 12
- **9/24** – Third CAB Meeting
- Late October – Implementation begins and What's Happening Here Flyer distributed
- **11/5** – Walkthrough with DOT, MTA, 103 Precinct, NYPD Transportation, CM Miller
- **11/18** – CB 12 Full Board Meeting
- **Fall/Winter 2020** - DOT/NYPD conducts multiple educational visits to businesses, NYPD continues ticket and tow operation



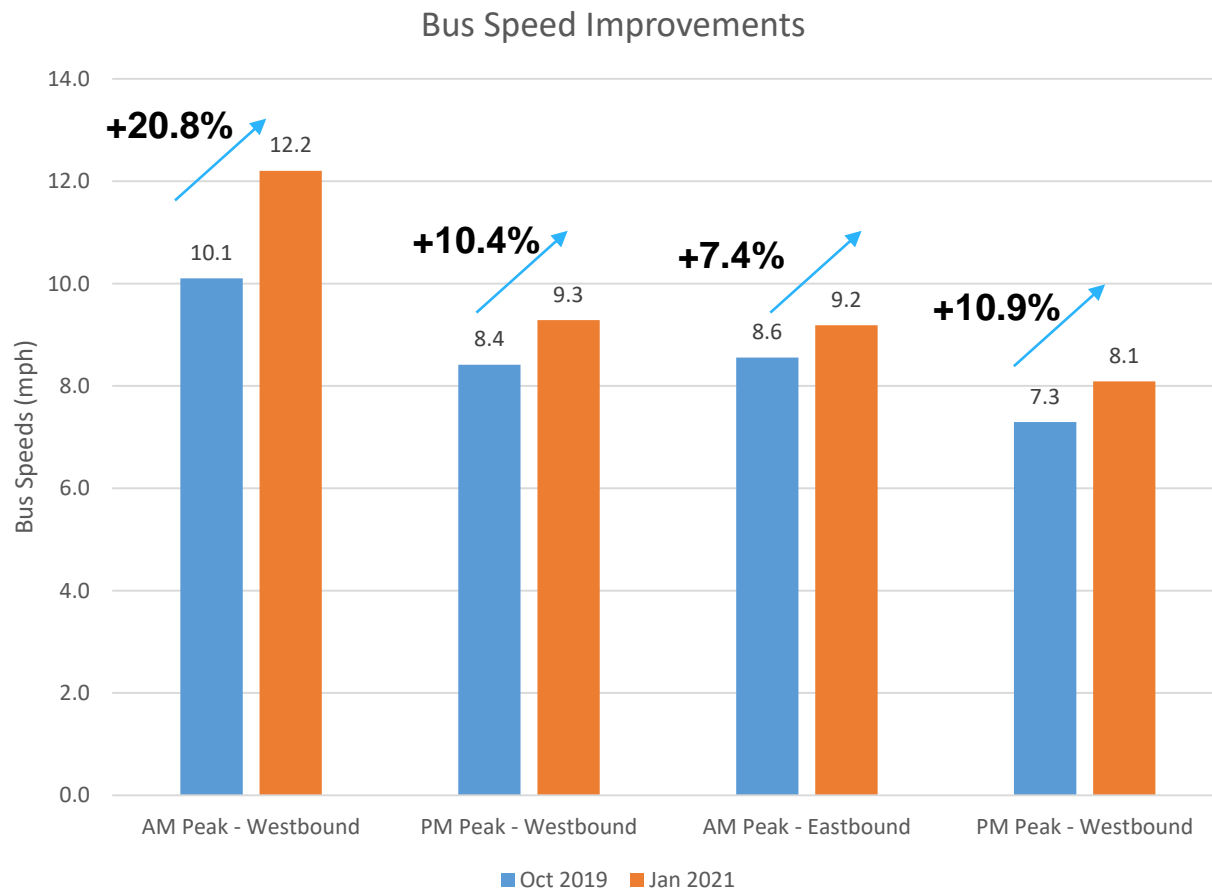
Enforcement

- In late November 2020, NYPD conducted educational outreach and handed out warning tickets
- NYPD continues ticketing vehicles parked in the bus lane
- NYPD and DSNY also continues towing derelict vehicles parked along the Merrick Blvd corridor



Merrick Boulevard Bus Speeds

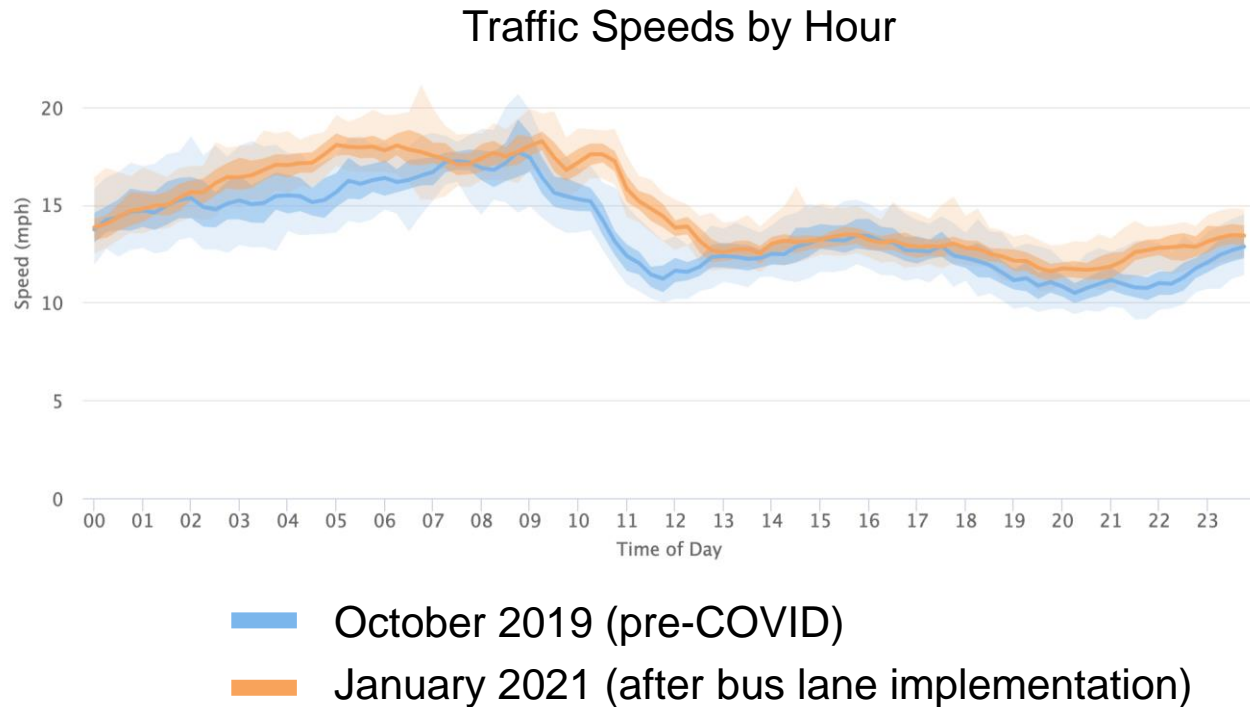
- Bus speeds increased across the board between October 2019 and January 2021
- MTA and DOT continuing to monitor bus speeds



Source: NYCT Bus Time data. Previous presentations displayed NYCT IVN data. Both data sources show faster bus speeds. MTA and DOT have revised methodology for consistency across all projects.

Merrick Boulevard and 168th St Traffic Speeds

- Traffic speeds on average 6% faster after implementation of bus lanes weekdays between 7 AM and 7 PM
- Traffic speeds throughout the day are similar to pre-COVID levels, with slightly higher speeds late morning and late evening
- DOT will continue to monitor traffic speeds



Source: Inrix. Data is from all weekdays in October 2019 and January 2021 between 7AM – 7PM.

Next Steps

DOT intends to complete the following tasks in Spring/Summer 2021

- Bus lane cameras to be added
- Adding flexible delineators to pedestrian spaces
- Complete the 109th Ave-Liberty Ave bus lane gap
- Bus stop spacing adjustments
- Curb regulation updates
- Red paint to be added



Thank You!

Questions?



NYC DOT



NYC DOT



nyc_dot



NYC DOT