

Merrick Blvd Bus Lanes

NYC DOT | Better Buses Restart | July 13, 2021

Merrick Blvd, Queens



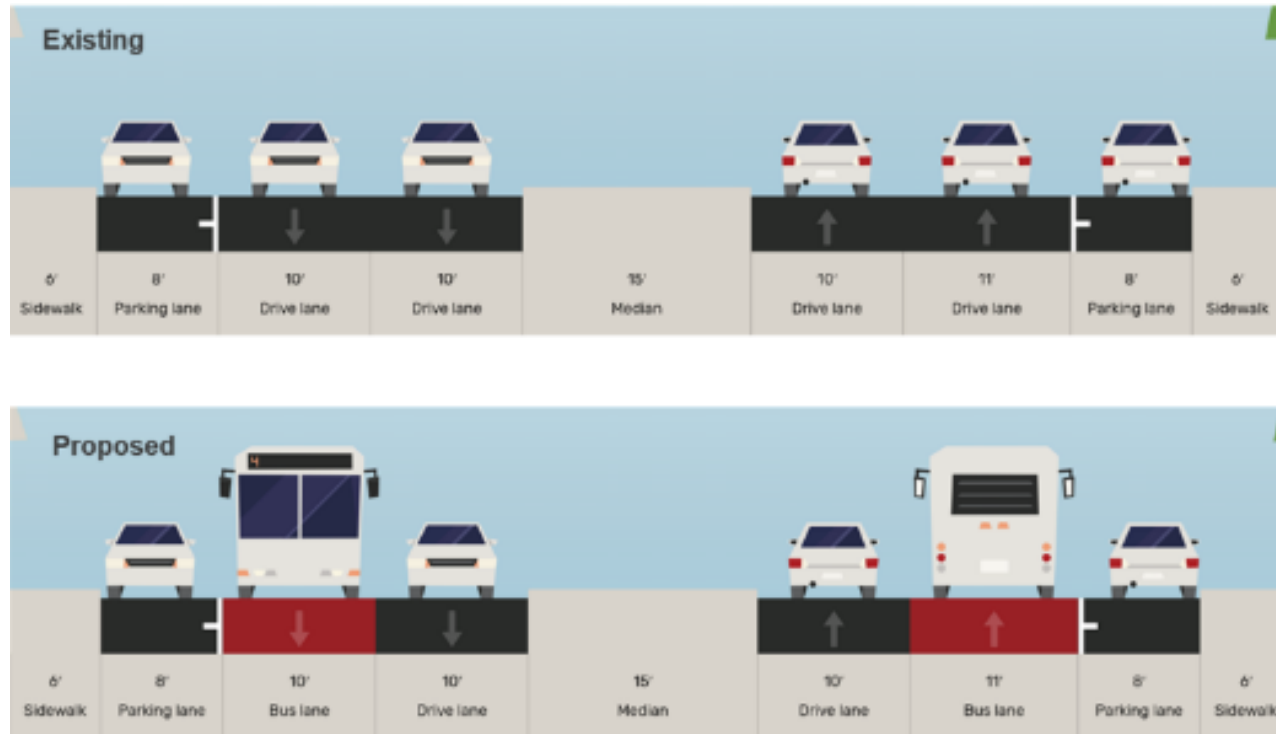
Corridor Description

- Merrick Blvd and 168 St between Hillside Ave and Springfield Blvd
- 3.2 mile, mostly commercial corridor
- Served by Q4, Q5, Q84, Q85, X63, N4 and N4X routes south of Archer Ave
- Many more routes circulate on Merrick/168 St north of Archer Ave
- Serves 94,000 daily riders



Merrick Blvd Bus Priority

- Offset bus lanes (one lane out from the curb)
- 6.4 miles in total
- Pedestrian safety elements
- Revisions to bus stop spacing to improve speed and reliability



Merrick Blvd and 168th St between Springfield Ave and Archer Ave design concept

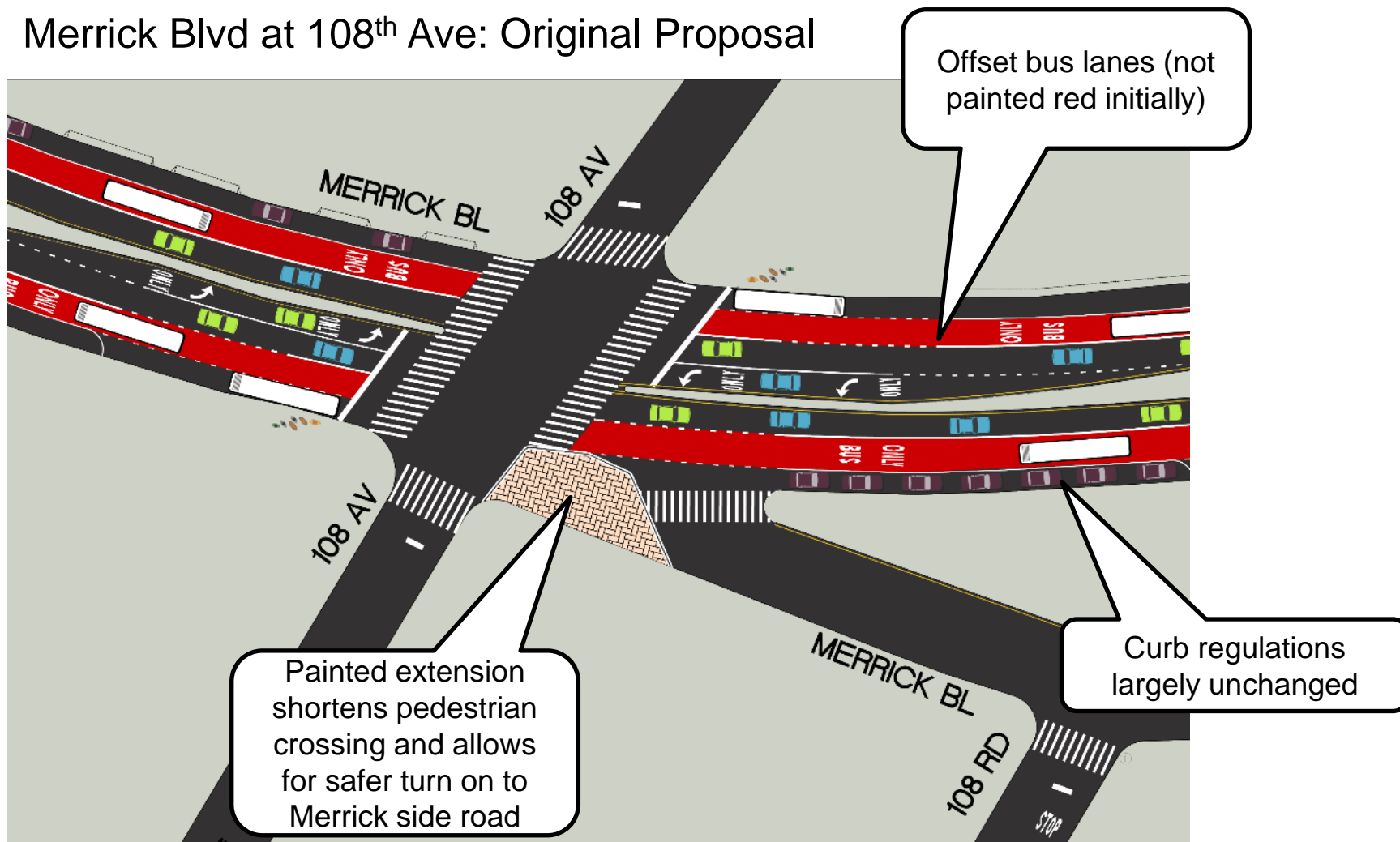
Implemented Bus Lane Improvements

- White bus lane markings and signage completed and bus lanes in effect
 - 0.5 mile section northbound between 109th Ave and Liberty Ave was deferred to allow for additional outreach
- Added vertical delineators to pedestrian extensions at Merrick Blvd & 108th Ave and Merrick Blvd & 109th Ave
- Bus stop spacing adjustments
- Commercial loading zones near Merrick Blvd & 91st Ave and Merrick Blvd & 108th Ave
- DOT and MTA monitoring bus and traffic conditions



Merrick Blvd Bus Lanes Plan

Merrick Blvd at 108th Ave: Original Proposal



109th Avenue-Liberty Avenue Gap

- After consultation with CAB, DOT initially postponed implementation of a 0.5 mile section northbound between 109th Avenue and Liberty Avenue
- DOT met with businesses along this stretch multiple times and conducted a meeting to discuss solutions
- After evaluating the design alternatives, DOT intends to move forward with an offset lane design consistent with the rest of the corridor
- Implementation of this bus lane will occur in July 2021



Improvements to Existing Bus Lanes

In July 2021:

- Reapply deteriorated white markings
- Add red paint to improve driver visibility
- Activate automated bus lane enforcement cameras
 - 60 day warning period for violations upon activation



Longer Term Improvements

Further improvements to be made in 2021:

- Installation of overhead gantry bus lane signs which make bus lanes more clearly visible to drivers
- Studying additional commercial loading zones to be implemented on Merrick Boulevard to accommodate truck and commercial loading to businesses



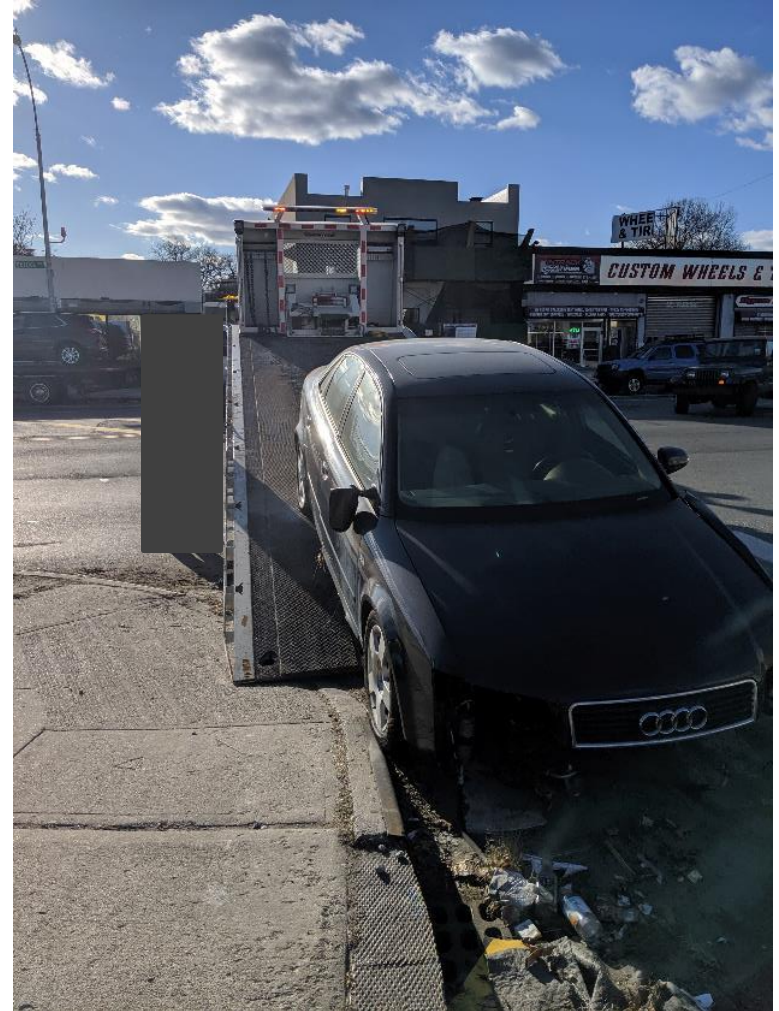
Outreach

- **2/16/21** – Met with CB 12 Transportation Committee March 2021 - Business outreach via phone
- **4/8/21** – Door to door business outreach, 109 Ave to Liberty Ave
- **4/28/21** – Virtual meeting with 109 Ave to Liberty Ave businesses
- **4/30/21** – Walkthrough with Commissioner Gutman and Councilmember Miller
- **6/9/21** – Virtual meeting with Merrick Blvd/Linden Blvd businesses



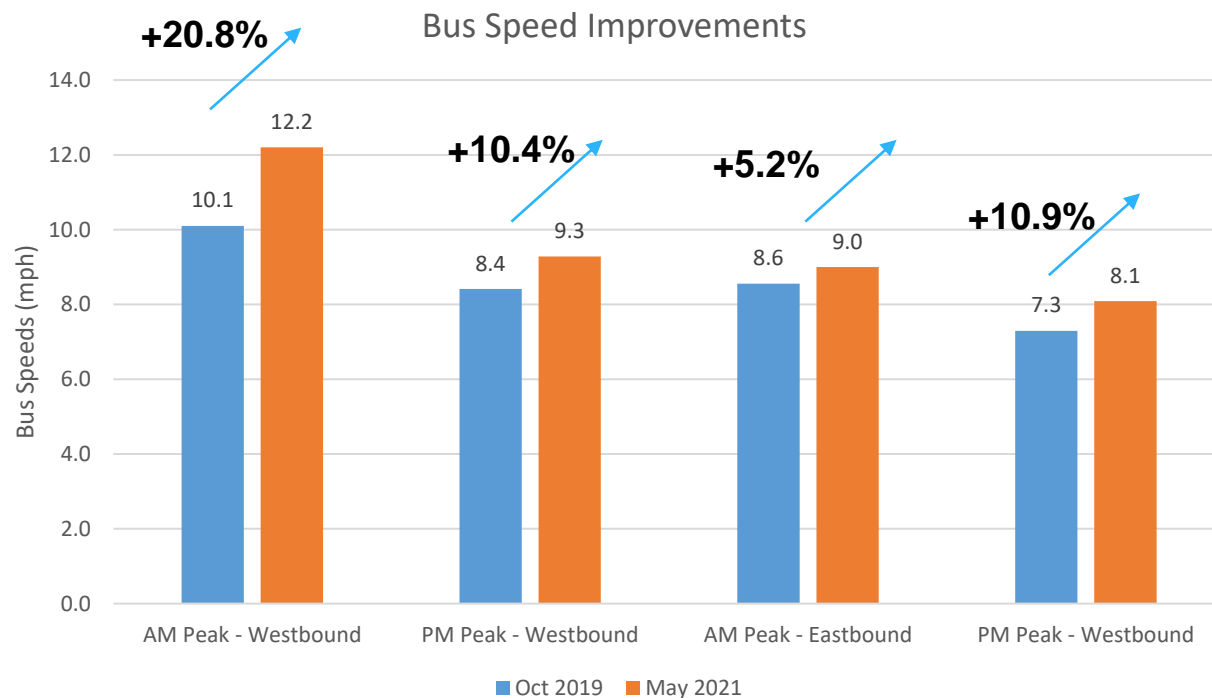
Enforcement

- **12/21/20** – Ticket and Tow with NYPD 103 and 113 Precincts
- **12/22/20** – Ticket and Tow with NYPD 103 and 113 Precincts
- **12/29/20** – Ticket and Tow with NYPD 103 Precinct and DSNY
- **5/26/21** – Ticket and Tow with NYPD 103 Precinct and DSNY
- **5/27/21** – Ticket and Tow with NYPD 103 Precinct and DSNY



Merrick Boulevard Bus Speeds

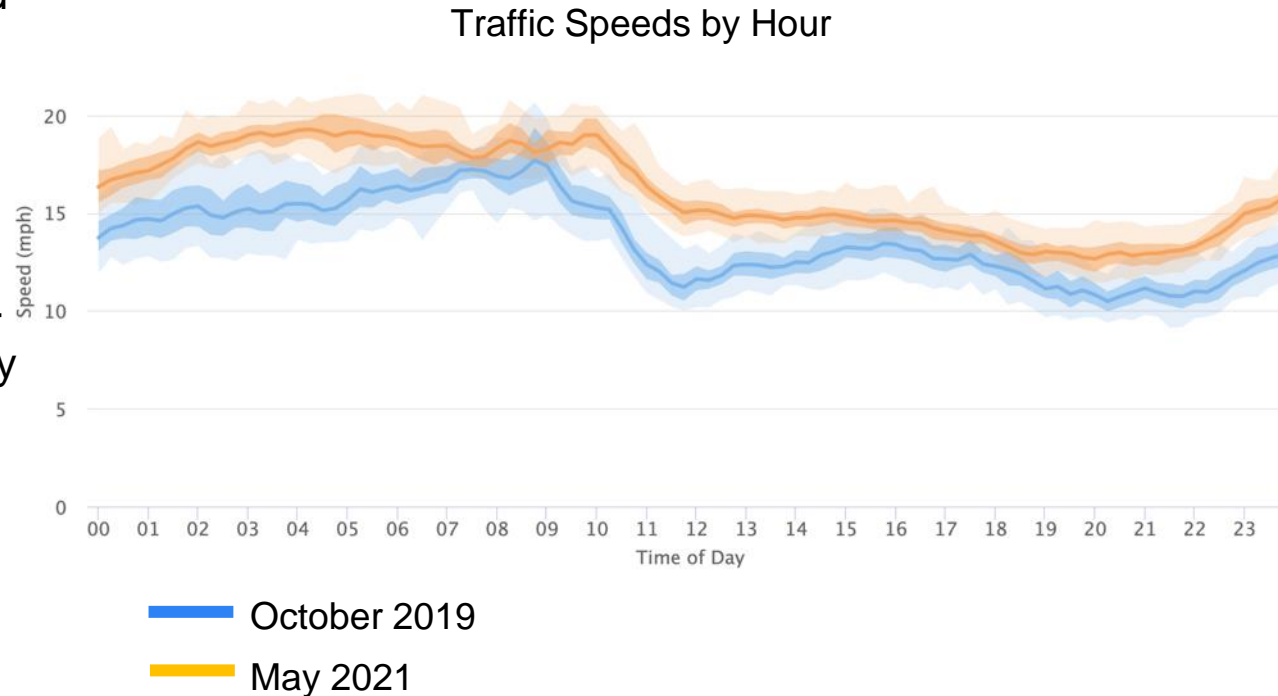
- Bus speeds increased across the board between October 2019 and May 2021
- MTA and DOT continuing to monitor bus speeds



Source: NYCT Bus Time data. Previous presentations displayed NYCT IVN data. Both data sources show faster bus speeds. MTA and DOT have revised methodology for consistency across all projects. Dwell times excluded from calculation.

Merrick Boulevard and 168th St Traffic Speeds

- Traffic speeds unchanged or faster after implementation of bus lanes weekdays between 7 AM and 7 PM
- Traffic speeds throughout the day are similar to pre-COVID levels, with slightly higher speeds late morning and late evening
- Traffic levels are close to pre-pandemic levels citywide
- DOT will continue to monitor traffic speeds



Source: Inrix. Data is from all weekdays in October 2019 and May 2021 between 7AM – 7PM.

Implementation

July 2021

- Complete the 109th Ave-Liberty Ave bus lane gap
- Reapply white pavement markings
- Add red paint to the existing bus lanes
- Activate bus lane cameras

Fall/Winter 2021

- Overhead bus lane signs



Thank You!

Questions?



NYC DOT



NYC DOT



nyc_dot



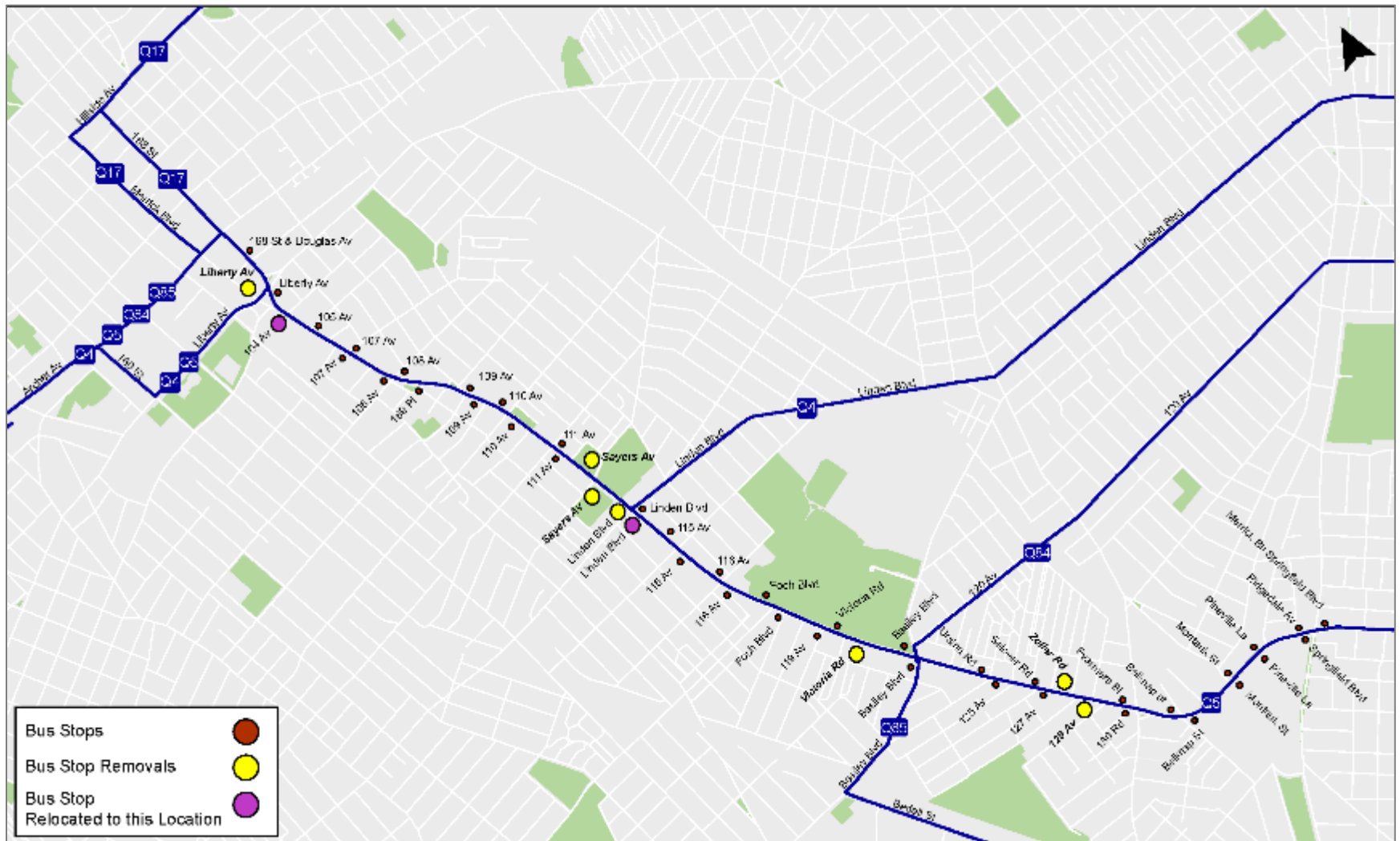
NYC DOT

Improved Bus Stop Spacing

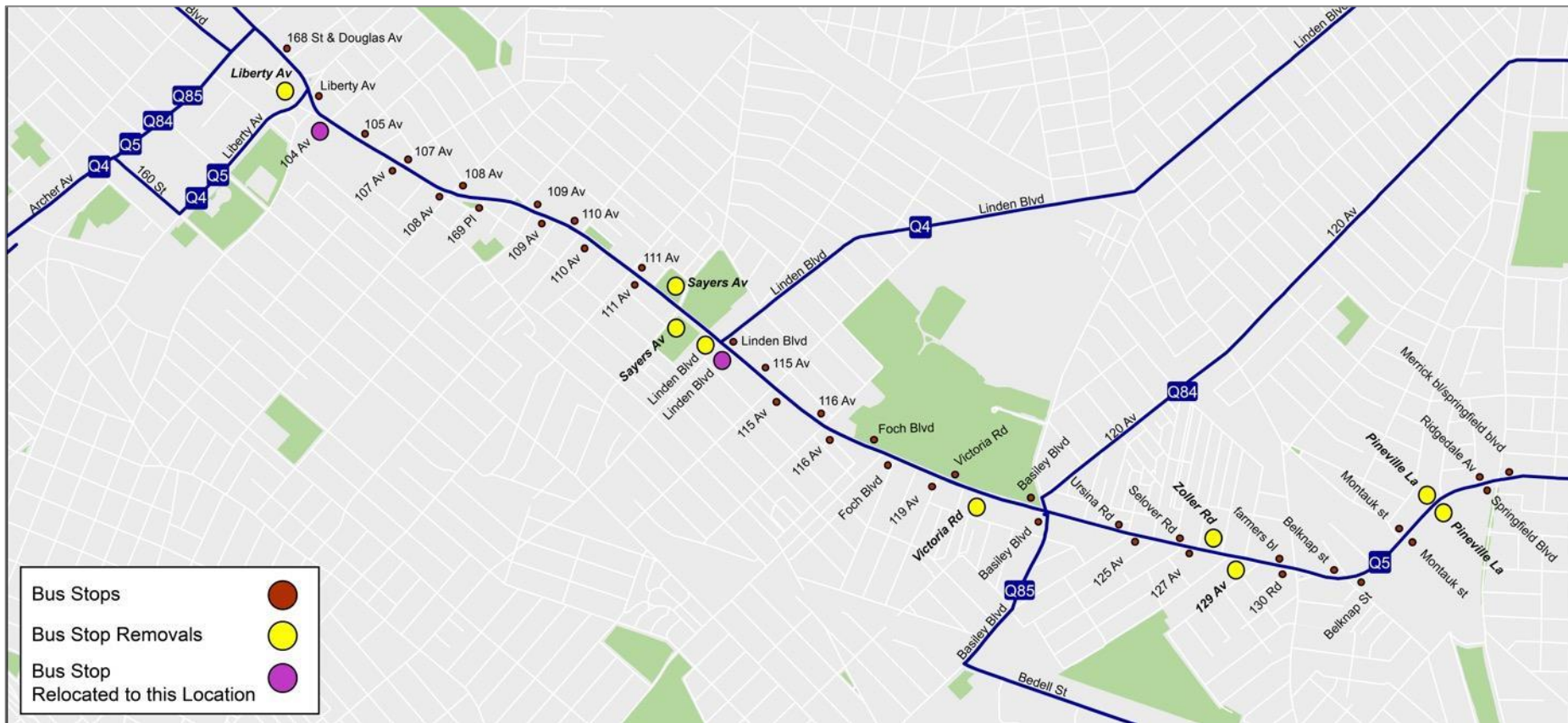
- Better, more consistent stop spacing can improve speed and reliability
- Adjusting stop locations at critical intersections can improve bus reliability and bus speed



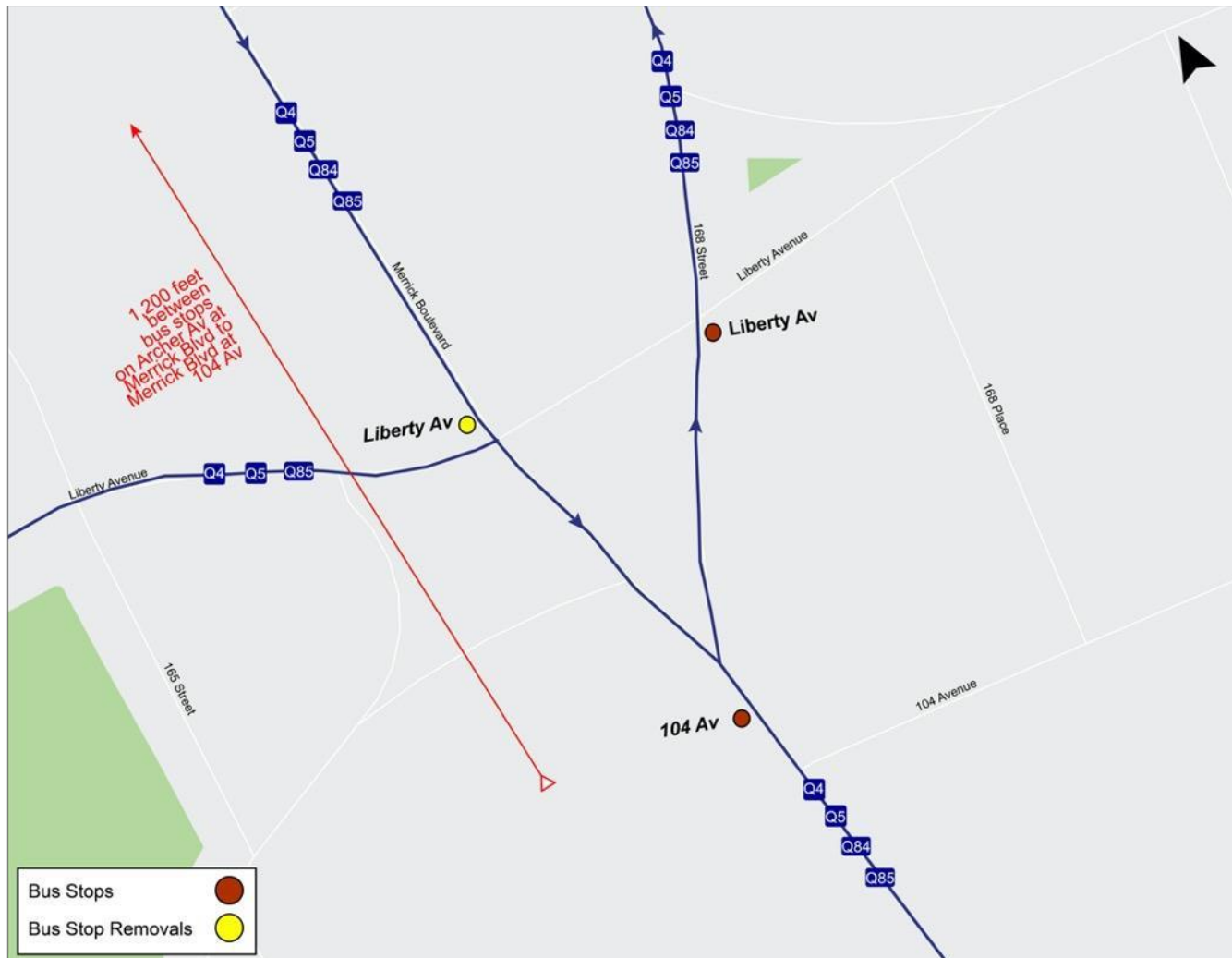
Improved Bus Stop Spacing - Overview



Improved Bus Stop Spacing - Overview



Improved Bus Stop Spacing – Liberty Av



Improved Bus Stop Spacing – Sayres Av



Merrick Blvd Bus Speeds

IVN Bus Speeds (mph)

	Oct 2019 AM Peak	Jan 2021 AM Peak	Oct 2019 PM Peak	Jan 2021 PM Peak
Westbound	10.5	11.9	9.7	10.9
Eastbound	10	10.8	9.3	10.3

Bus Time Bus Speeds (mph)

	Oct 2019 AM Peak	Jan 2021 AM Peak	Oct 2019 PM Peak	Jan 2021 PM Peak
Westbound	10.1	12.2	8.4	9.3
Eastbound	8.6	9.2	7.3	8.1