



MERRICK BLVD

(SPRINGFIELD BLVD TO HOOK CREEK BLVD)

Corridor Safety Improvements

April 4, 2017



citywide transit plan NYC

Help the NYC DOT understand how you use the transit system in NYC!

We want to know:

- Where you go
- Where you *want* to go
- How you get there

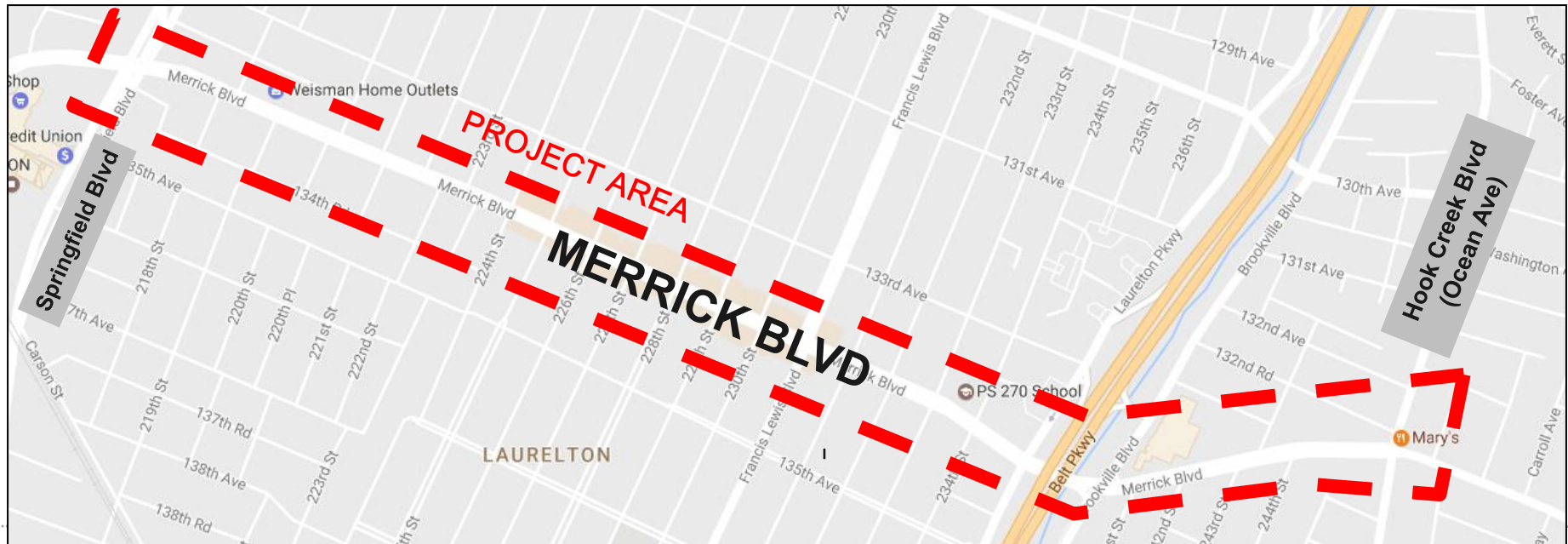
Take Our
Survey:

transitplan.nyc



PROJECT LOCATION

- Low-rise commercial corridor
- Q5, x63 and N4 buses run on Merrick Blvd
- PS 270 is located at 234th St
- Access to Belt Pkwy, connection to Nassau County

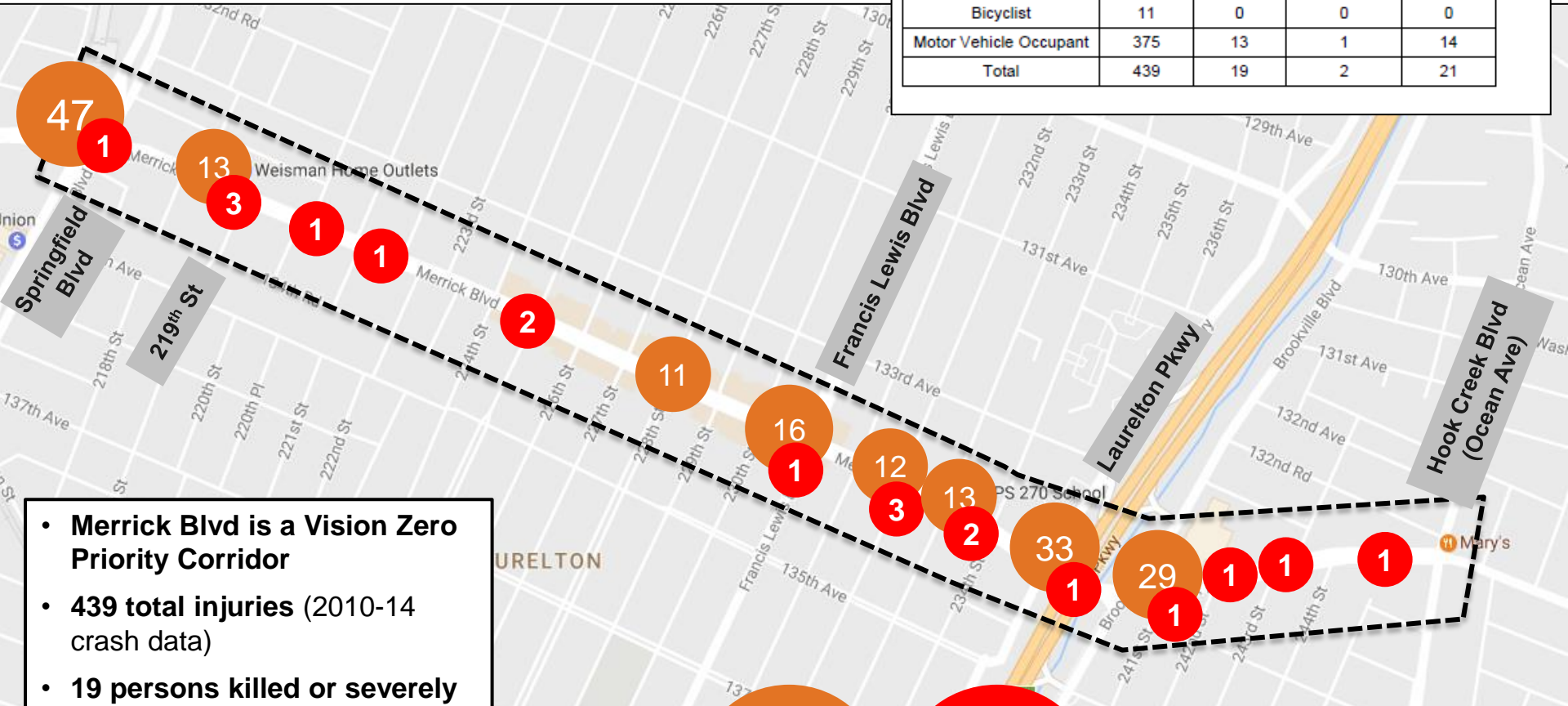


SAFETY DATA

Merrick Blvd - Springfield Blvd to Ocean Ave, QN

Injury Summary, 2010-2014 (5 Years)

	Total Injuries	Severe Injuries	Fatalities	KSI
Pedestrian	53	6	1	7
Bicyclist	11	0	0	0
Motor Vehicle Occupant	375	13	1	14
Total	439	19	2	21



- Merrick Blvd is a Vision Zero Priority Corridor
- 439 total injuries (2010-14 crash data)
- 19 persons killed or severely injured along 1.5 mile corridor (2010-2014 crash data)
 - 7 pedestrian severe injuries and 1 fatality

Injuries (10+) (2010-14)

Severe Injuries + Fatalities (2010-14)

EXISTING CONDITIONS



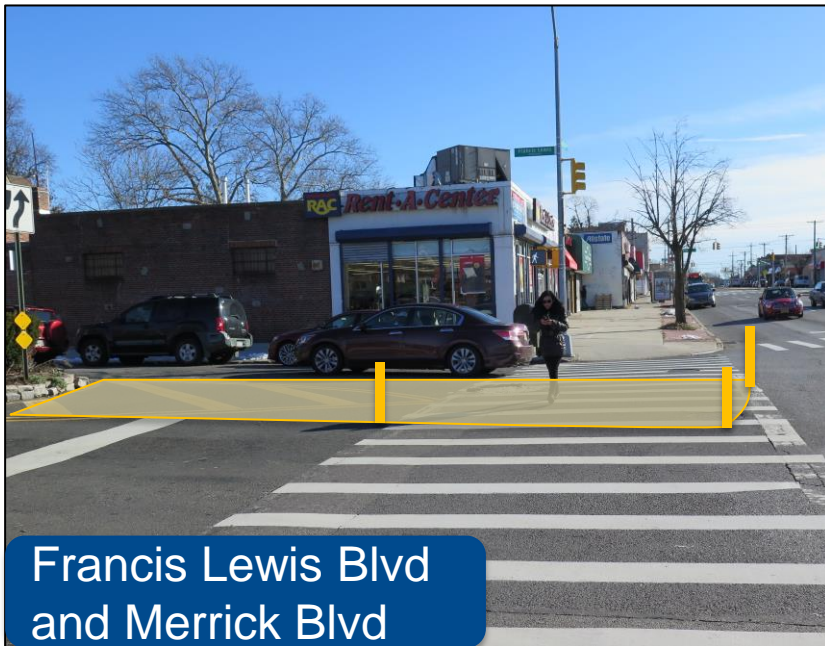
Long crossing distances and lack of pedestrian refuge space



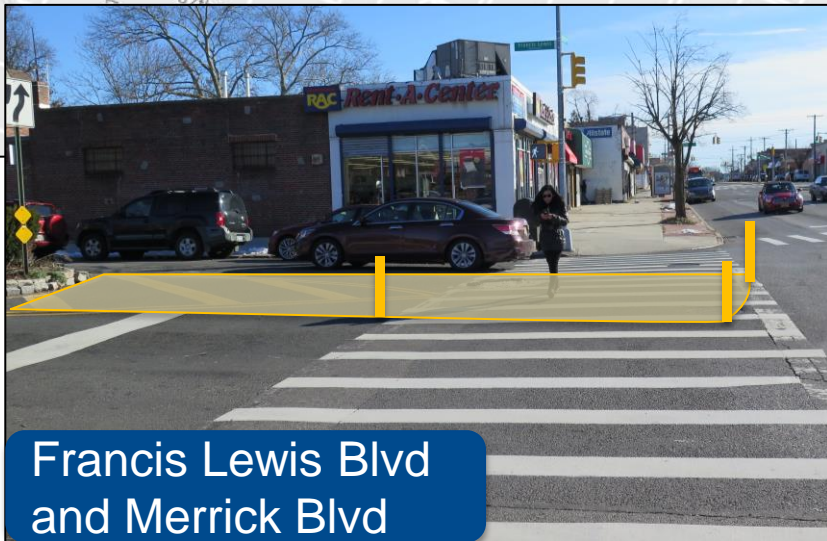
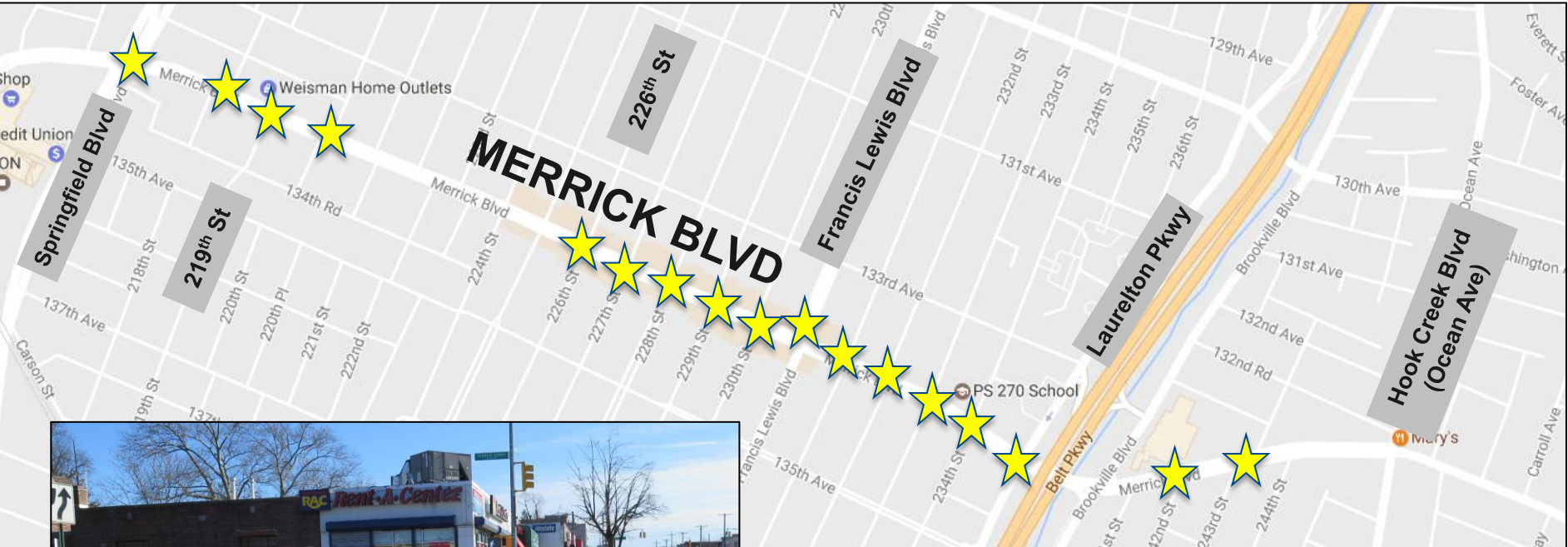
Missing pedestrian ramps and median cut-throughs

PROPOSAL

- Add painted median tip extensions at 17 locations on Merrick Blvd
- Add median tip in closed turn bay at 234th St, in front of PS 270
- Add parking lane stripe on Merrick Blvd (Springfield Blvd to Hook Creek Blvd)
- Add new crosswalks, ADA cut-throughs and pedestrian ramps at 219th St

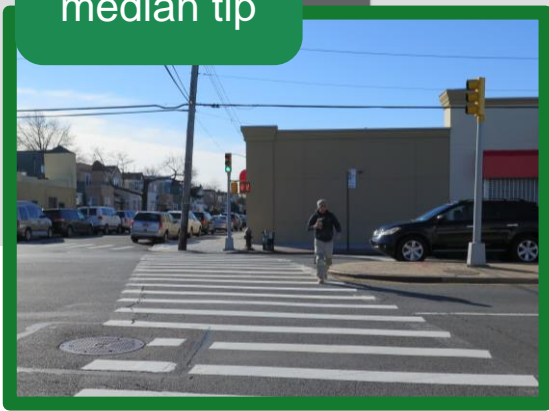
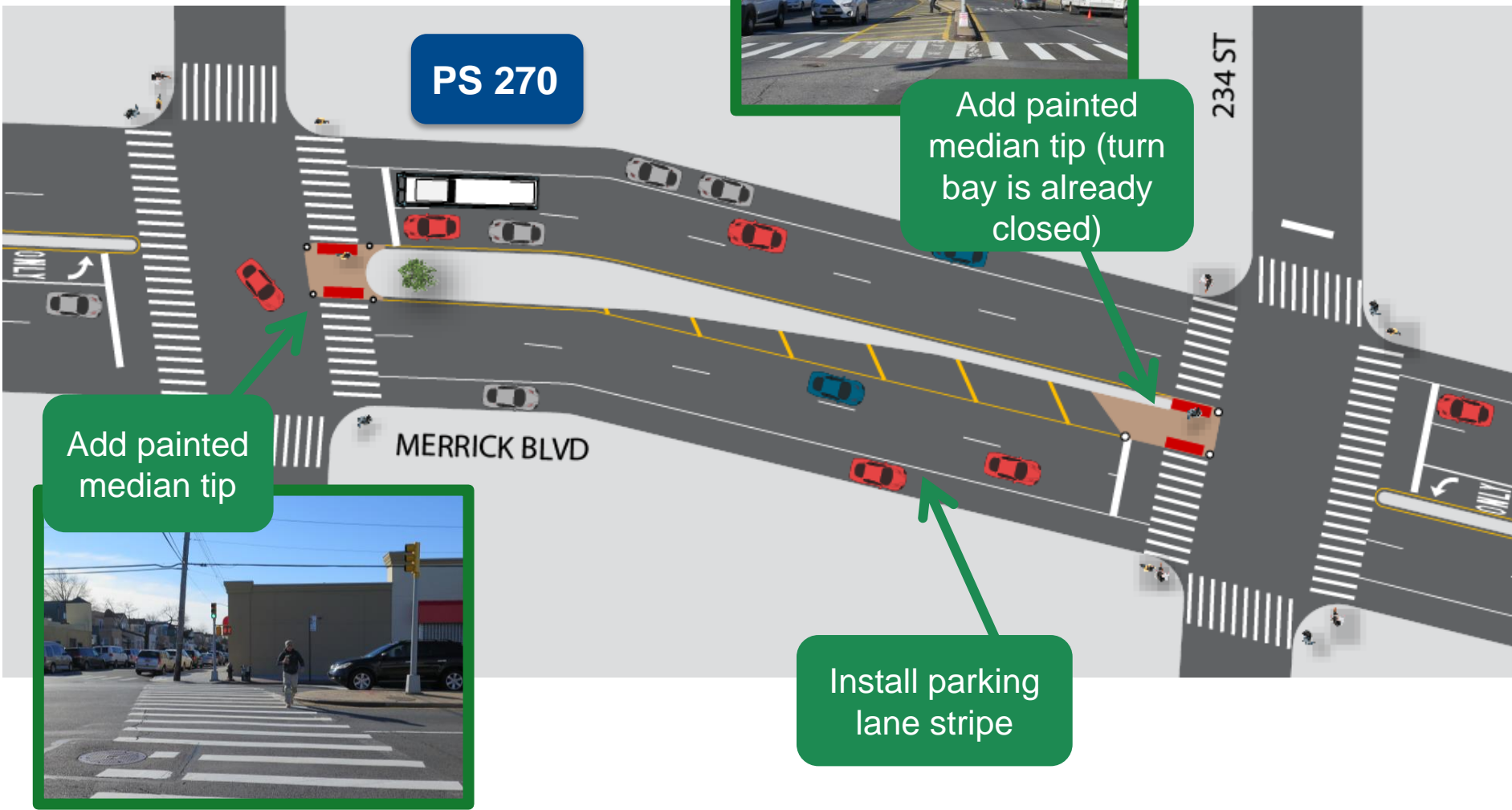


MEDIAN TIP LOCATIONS



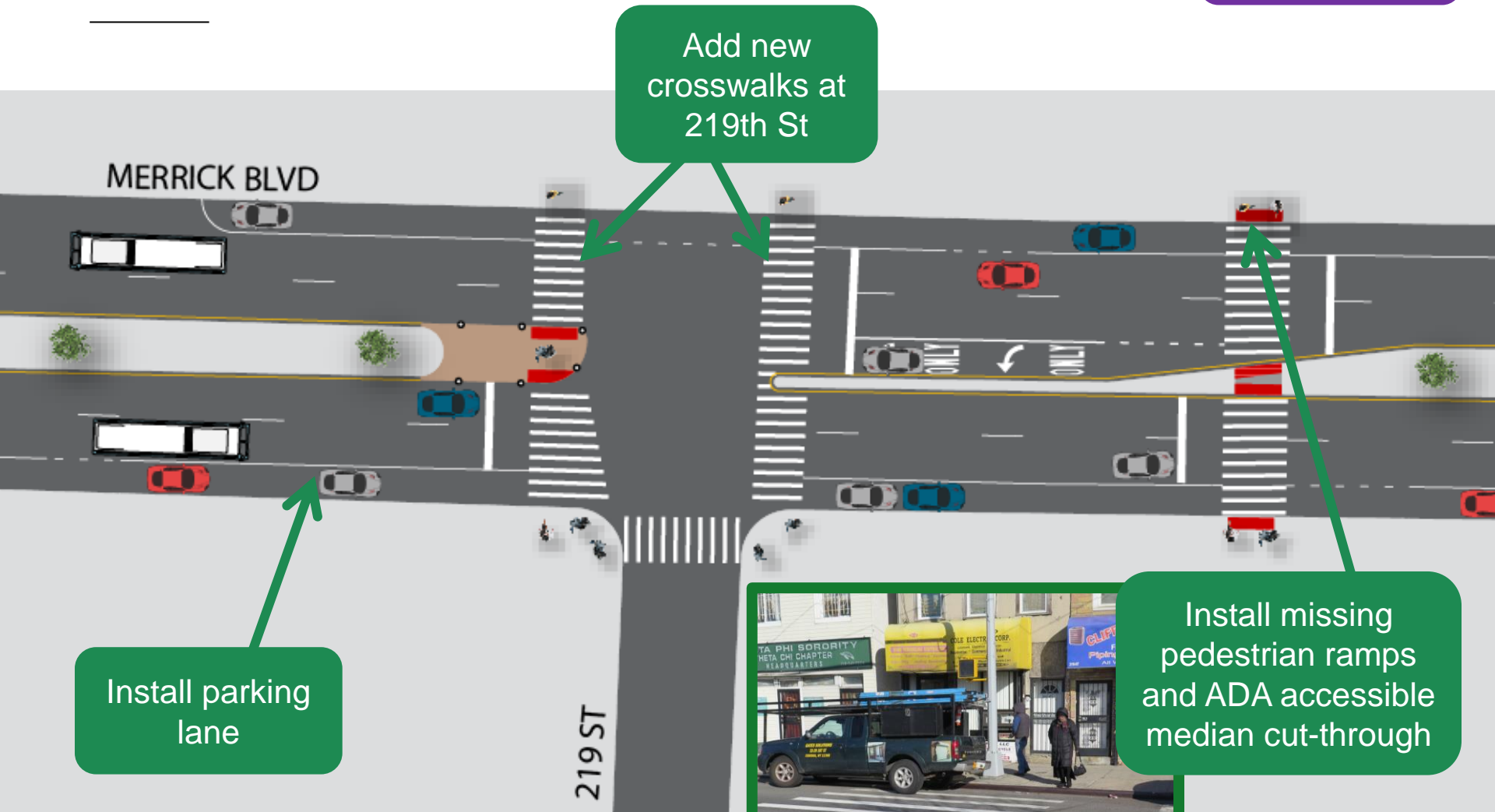
- Extended medians give pedestrians a safe place to wait, encourage slower/safer vehicle turns
- All locations reviewed by the FDNY

PROPOSAL



PROPOSAL

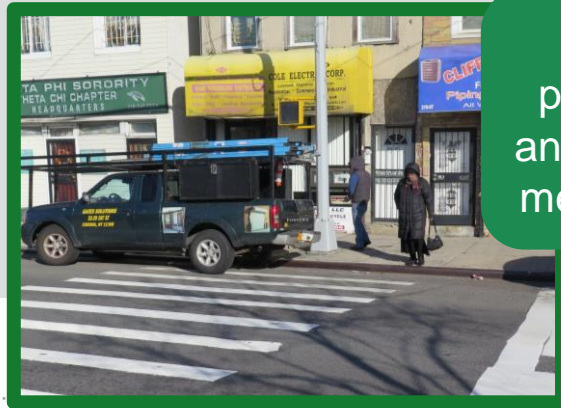
Under Study



Add new crosswalks at 219th St

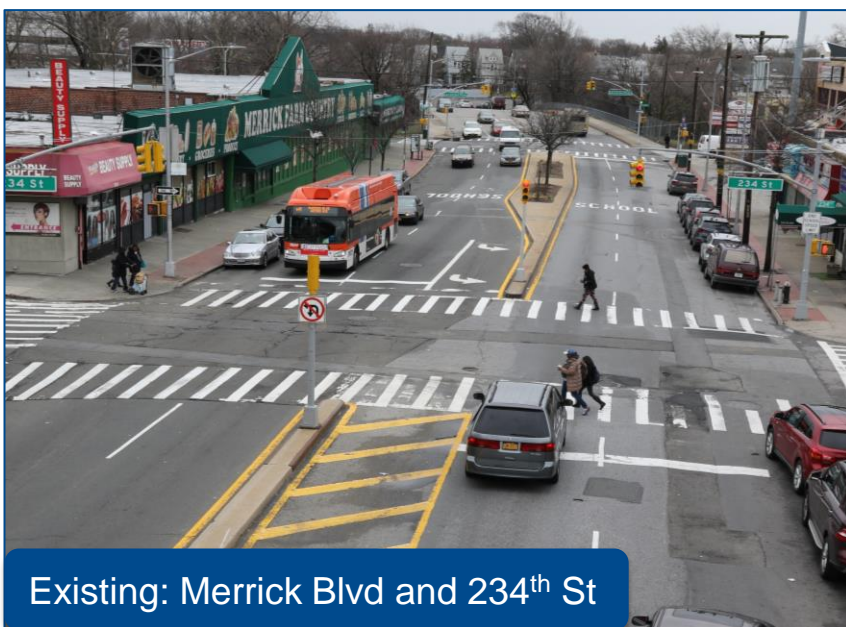
Install parking lane

Install missing pedestrian ramps and ADA accessible median cut-through



BENEFITS OF PROPOSAL

- Median tips shorten crossing distance for pedestrians and gives safe place to wait
- Extended median encourages slower, safer left and right turns
- New crosswalk under study at 219th St discourages mid-block crossing
- Upgraded markings clarify vehicle movements and discourage speeding



Existing: Merrick Blvd and 234th St



Example of Proposed:
4th Avenue, Brooklyn

THANK YOU!

Questions?



NYC DOT



NYC DOT



nyc_dot



NYC DOT