

# Madison Avenue at E 96 Street

Traffic, Bus, and Safety Improvements

Spring  
2016





# Project Area



Project Area

# Background

- Long queues for general traffic and buses during rush hour – coming to and from the park
- Long pedestrian crossings with heavy turn traffic
- Blocked intersections
- Poor visibility at corners for pedestrians and drivers



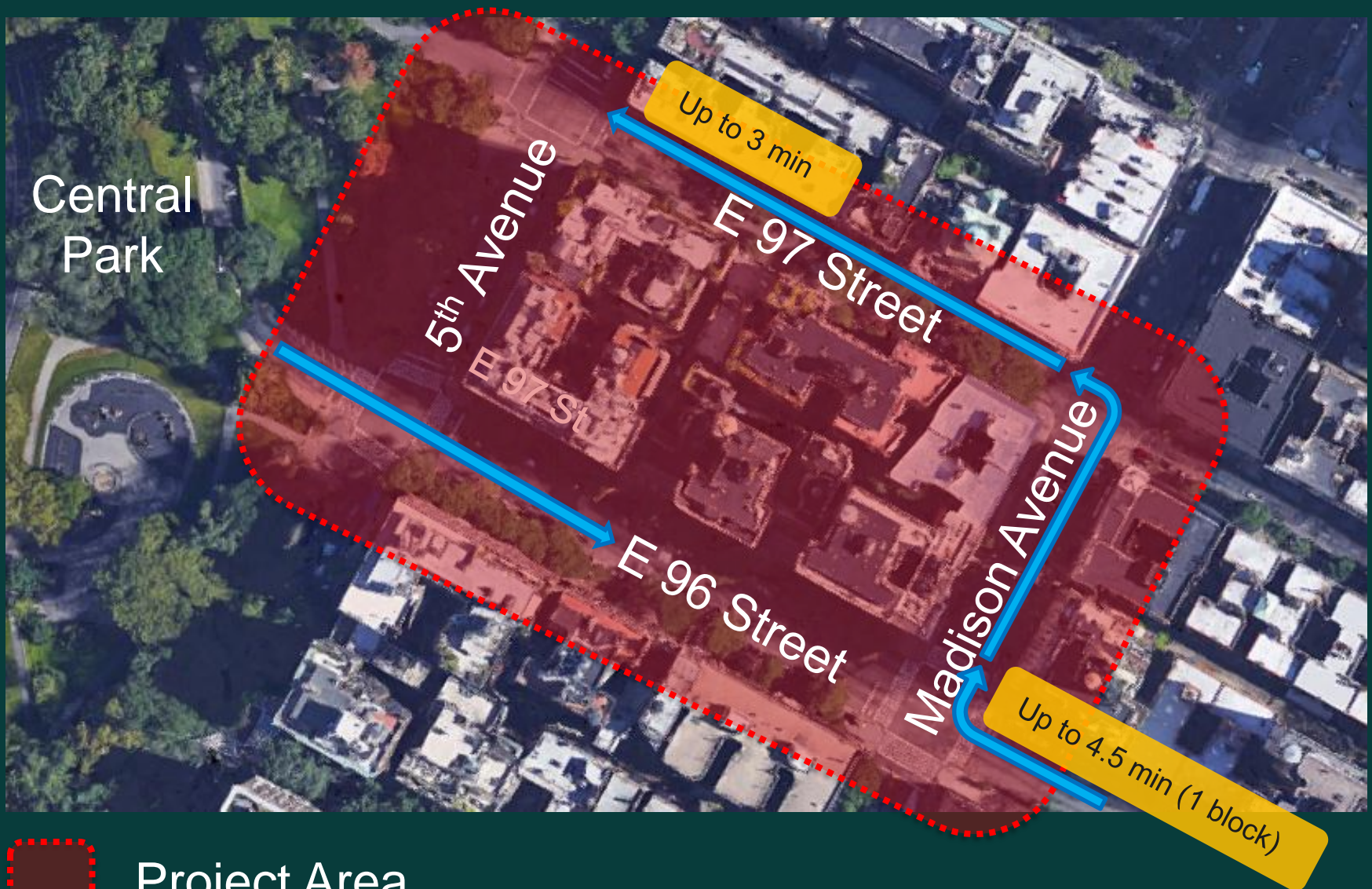
*E 96 St at Madison Ave, looking east*



*E 97 St at Madison Ave, looking west*

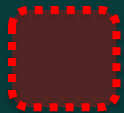


# Background





# Background



Project Area

# E 96 Street at 5<sup>th</sup> Avenue

## Issues

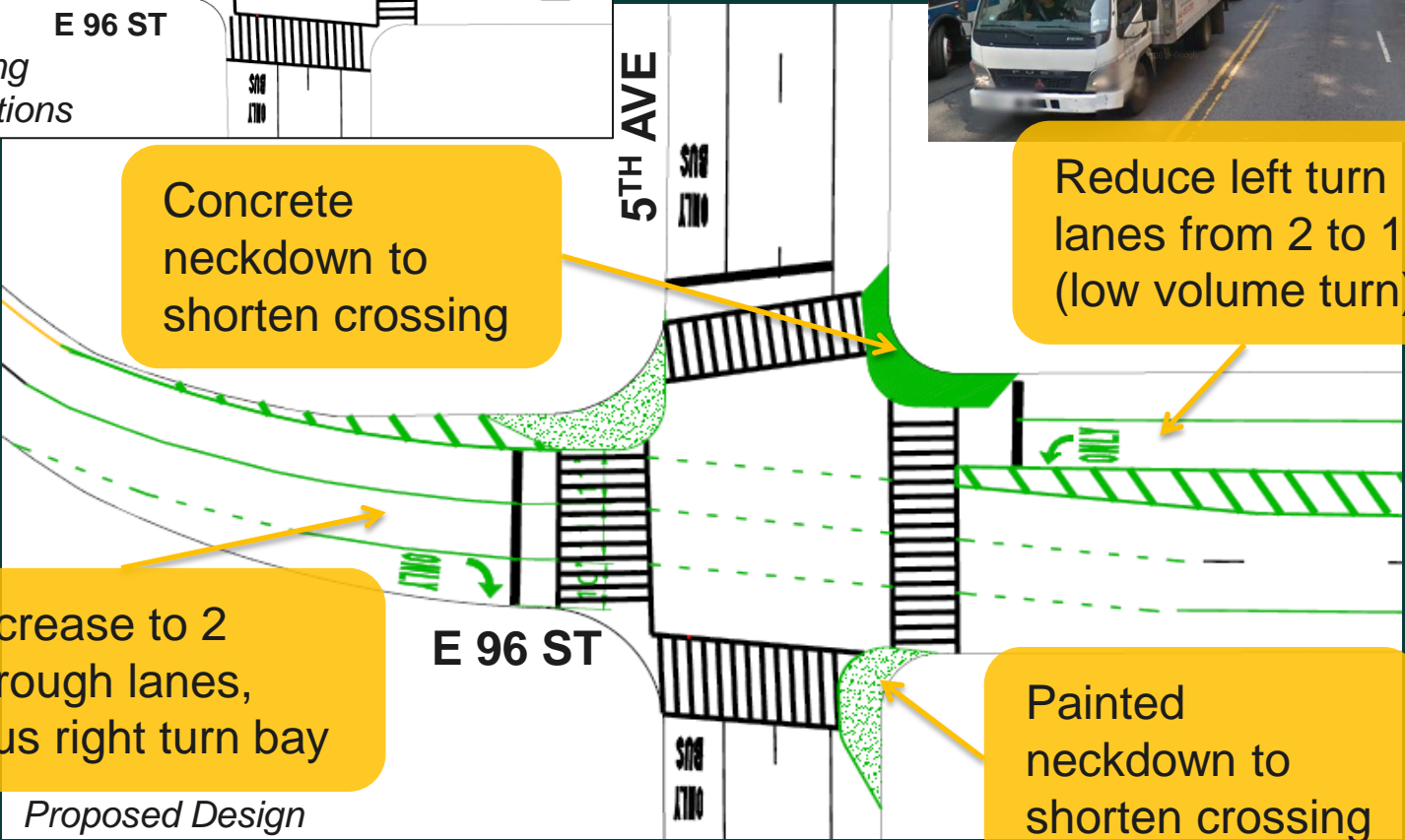
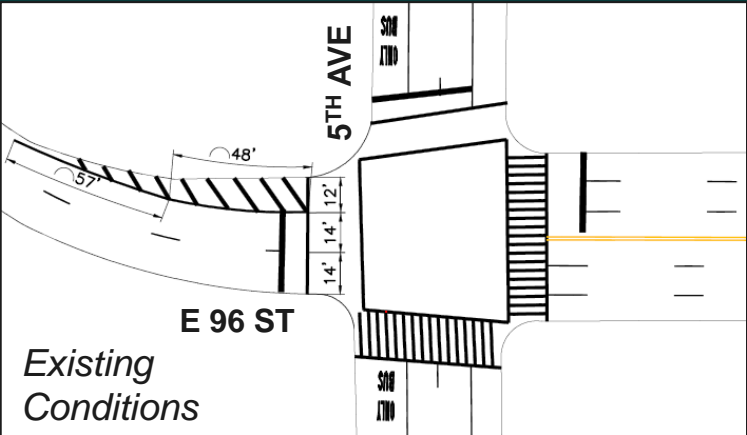
- Eastbound traffic backs up into park
- Long pedestrian crossings
- Heavy right turns onto 5<sup>th</sup> Ave leaves one through lane out of the park



*E 96 St at 5th Ave, looking west*



# E 96 Street at 5<sup>th</sup> Avenue



Concrete neckdown to shorten crossing

Reduce left turn lanes from 2 to 1 (low volume turn)

Increase to 2 through lanes, plus right turn bay

Painted neckdown to shorten crossing

# E 96 Street at Madison Avenue

## Issues

- Heavy right turns from E 96 St to Madison Ave
- Long and difficult pedestrian crossings with heavy turning traffic
- Illegal right turns from E 96 St onto Madison Ave using through lane
  - Pedestrian safety and traffic safety issue

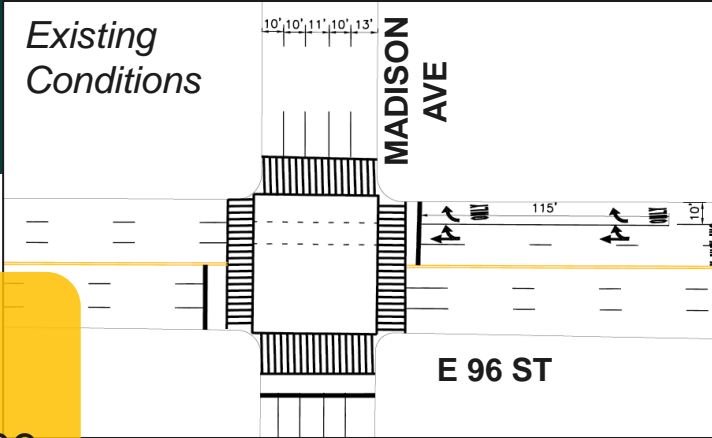
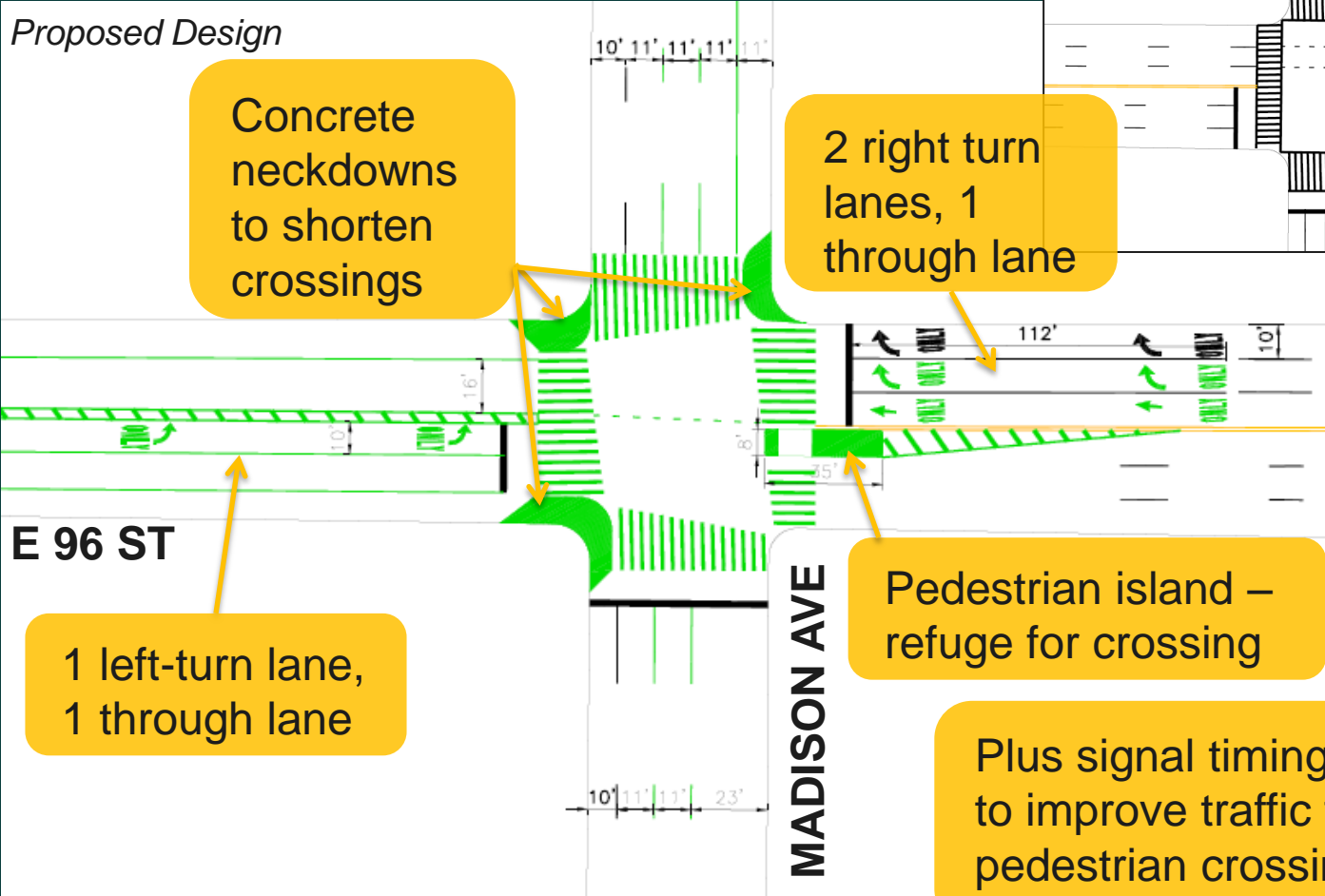


*E 96 St at Madison Ave, looking east*



# E 96 Street at Madison Avenue

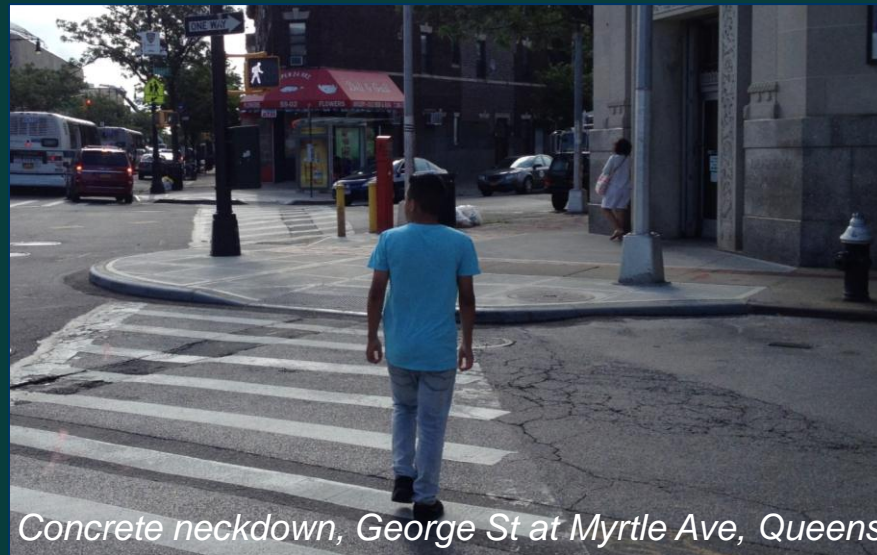
*Proposed Design*



# E 96 Street at Madison Avenue



*Pedestrian island, Caton Ave, Brooklyn*



*Concrete neckdown, George St at Myrtle Ave, Queens*



*Painted neckdown, 21st St at 31st Rd, Queens*



# E 97 Street at Madison Avenue

## Issues

- Heavy left turns onto E 97 St from Madison Ave, difficult turn for buses
- Short, congested block on Madison Ave to make left onto E 97 St
- E 97 St traffic backs up, blocks intersection
- Long and difficult pedestrian crossings

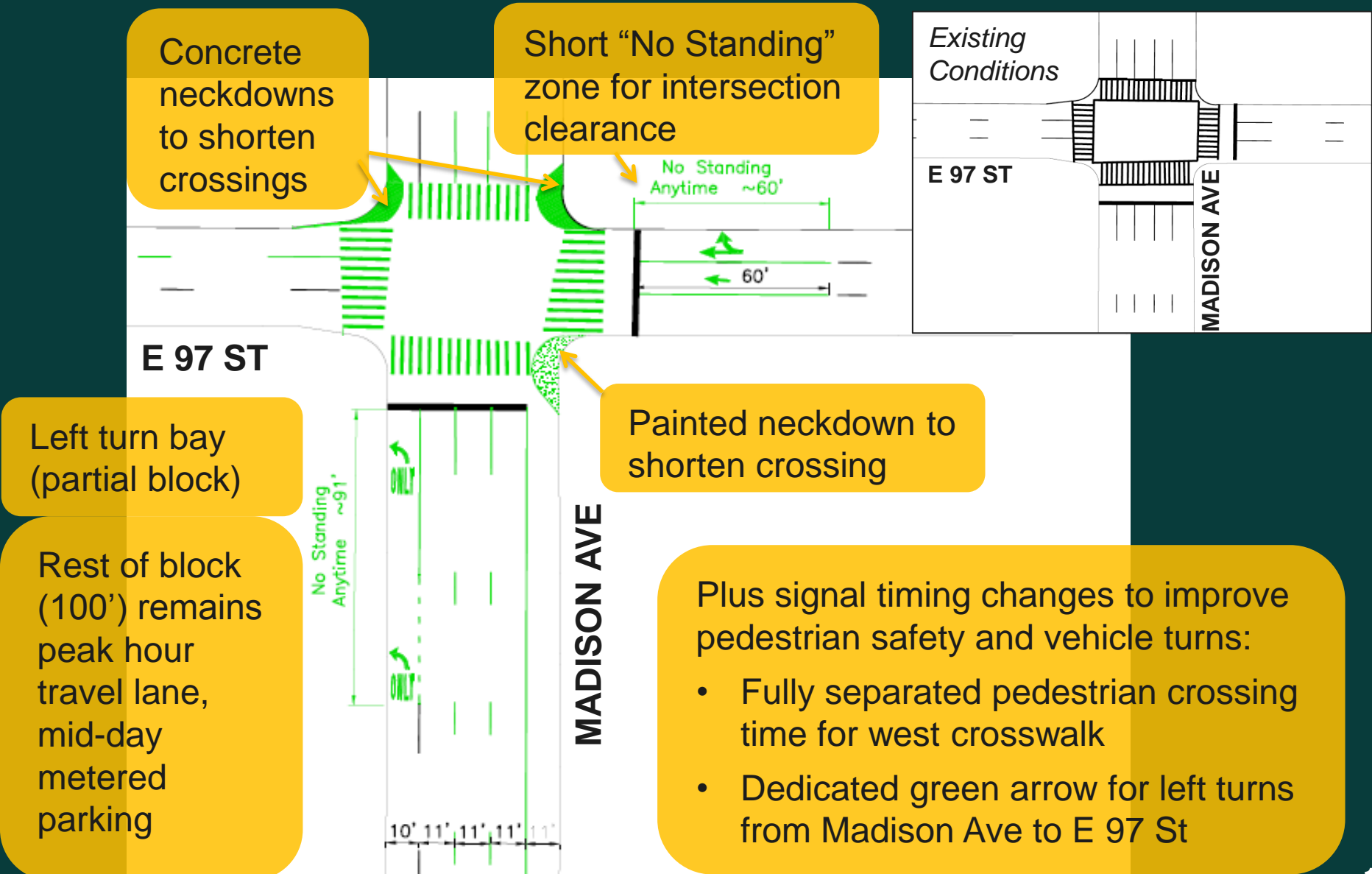


*E 97 St at Madison Ave, looking west*



*Madison Ave at E 97 St, looking south*

# E 97 Street at Madison Avenue





# E 97 Street at 5<sup>th</sup> Avenue

## Issues

- M96 bus has trouble maneuvering to reach bus stop
- Timing mismatch for the rush hour lane from Madison Ave to E 97 St
- Lanes not clearly marked – leads to inefficient use of road space



*E 97 St at Madison Ave, looking south*



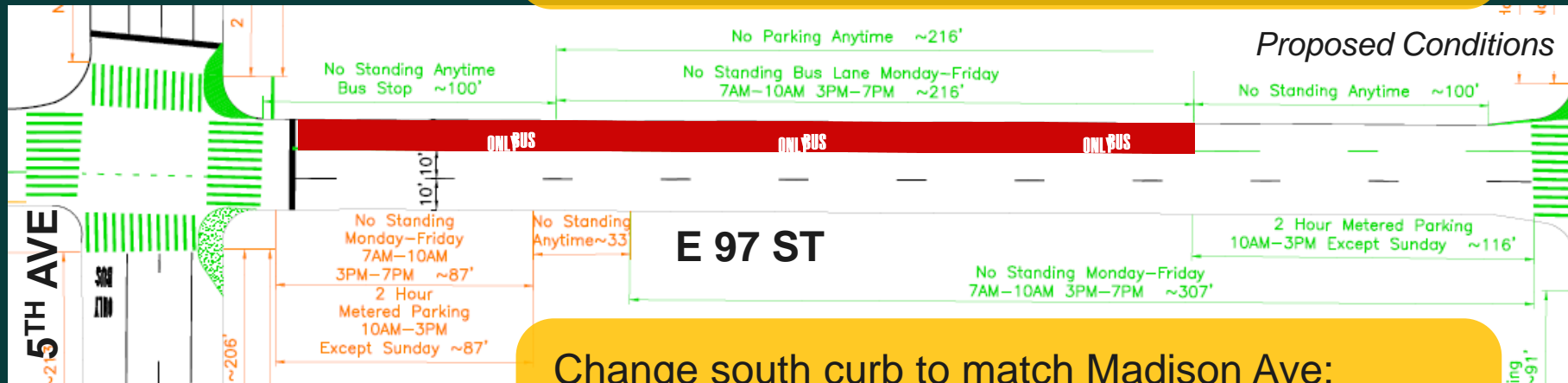
*E 97 St at 5th Ave, looking east*

# E 97 Street at 5<sup>th</sup> Avenue



Keep existing “No Parking Anytime” and add:

- AM & PM peak hour bus lane
- “No Standing” segment for bus & truck turns



Change south curb to match Madison Ave:

- No Standing 7-10 AM, 3-7 PM
- Parking other times



# E 97 St from Madison to 5<sup>th</sup> Avenue: Example Curbside Bus Lane

## Benefits

- Helps bus pull into bus stop
- Improves bus speeds and reliability
- Keeps curb clear during rush hours (benefits adjacent traffic)



# Next Steps

- Ongoing: Design proposal presentations and review
- Target implementation: Spring 2016





[www.nyc.gov/dot](http://www.nyc.gov/dot)

Thank  
You

Questions or comments?

Contact the DOT Manhattan Borough Office at 212-839-6210 or [mforgione@dot.nyc.gov](mailto:mforgione@dot.nyc.gov)