



# LINDENWOOD TRIANGLE

---

Presentation to Community Board 10

April 5, 2018

---

# BACKGROUND

# 1

# PROJECT AREA

- Residential area tucked between Conduit Ave and Belt Pkwy
- Light commercial uses west of project area
- PS 232 600' west of project site
- 3 bus routes run southeast of project area along 155<sup>th</sup> Ave



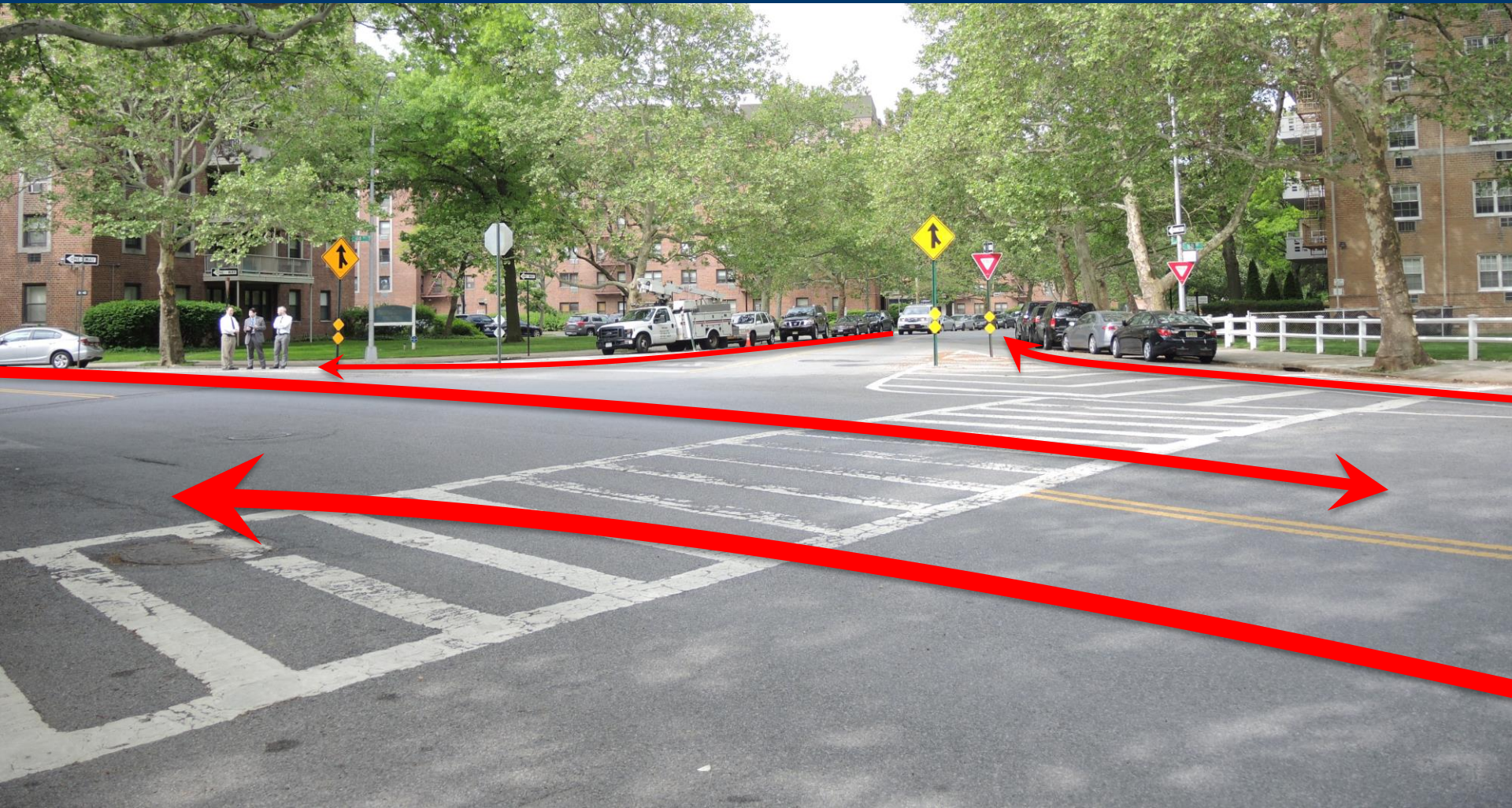
---

## EXISTING CONDITIONS

# 2



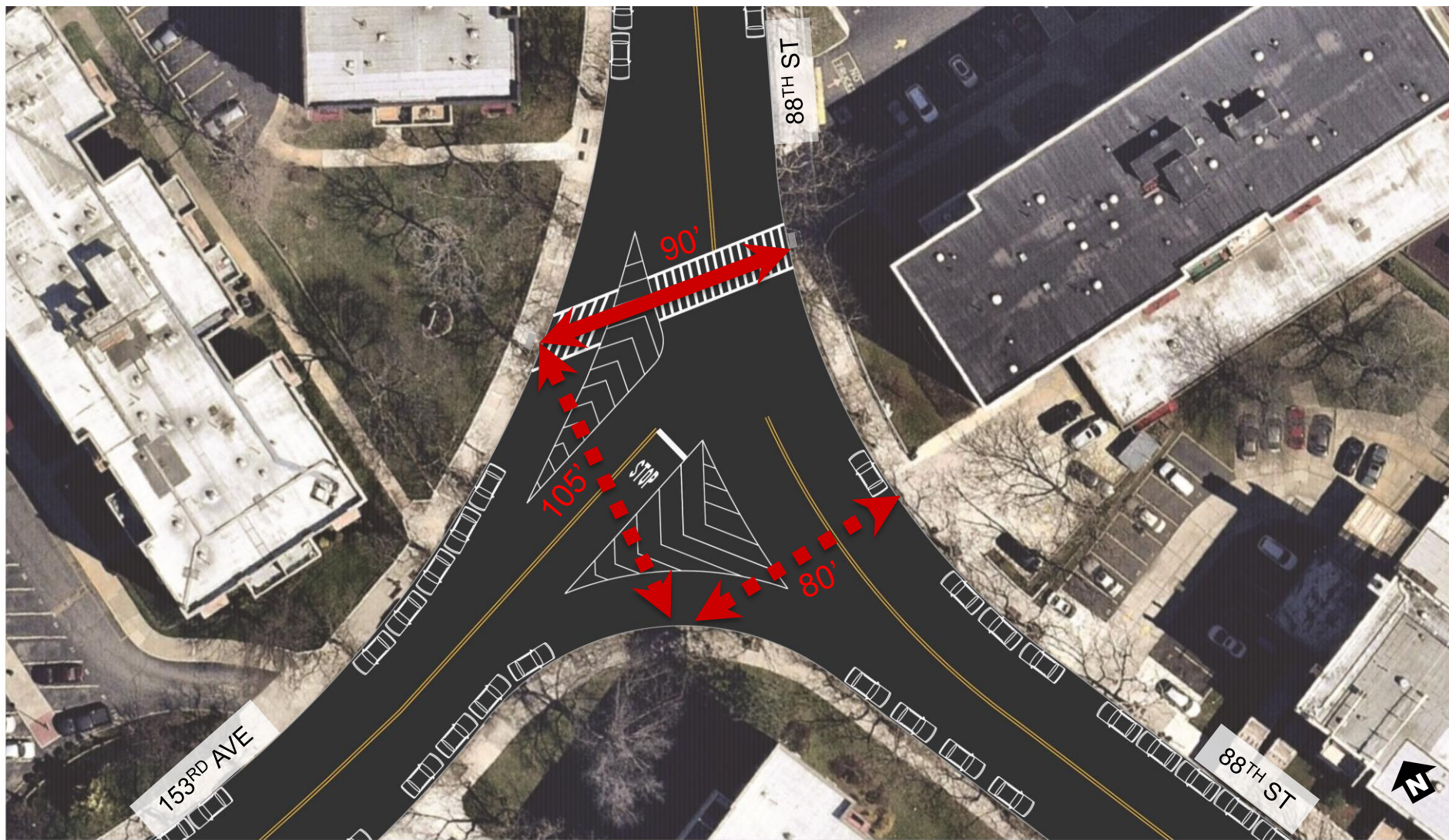
# EXISTING CONDITIONS – VEHICLE MOVEMENTS



- Excess road bed
- Soft turns enable speeding



# EXISTING CONDITIONS – PEDESTRIAN CROSSINGS



Missing  
crossings



Uncontrolled  
school crossing

---

PROPOSAL

3



# PROPOSAL – MINI ROUNDABOUT

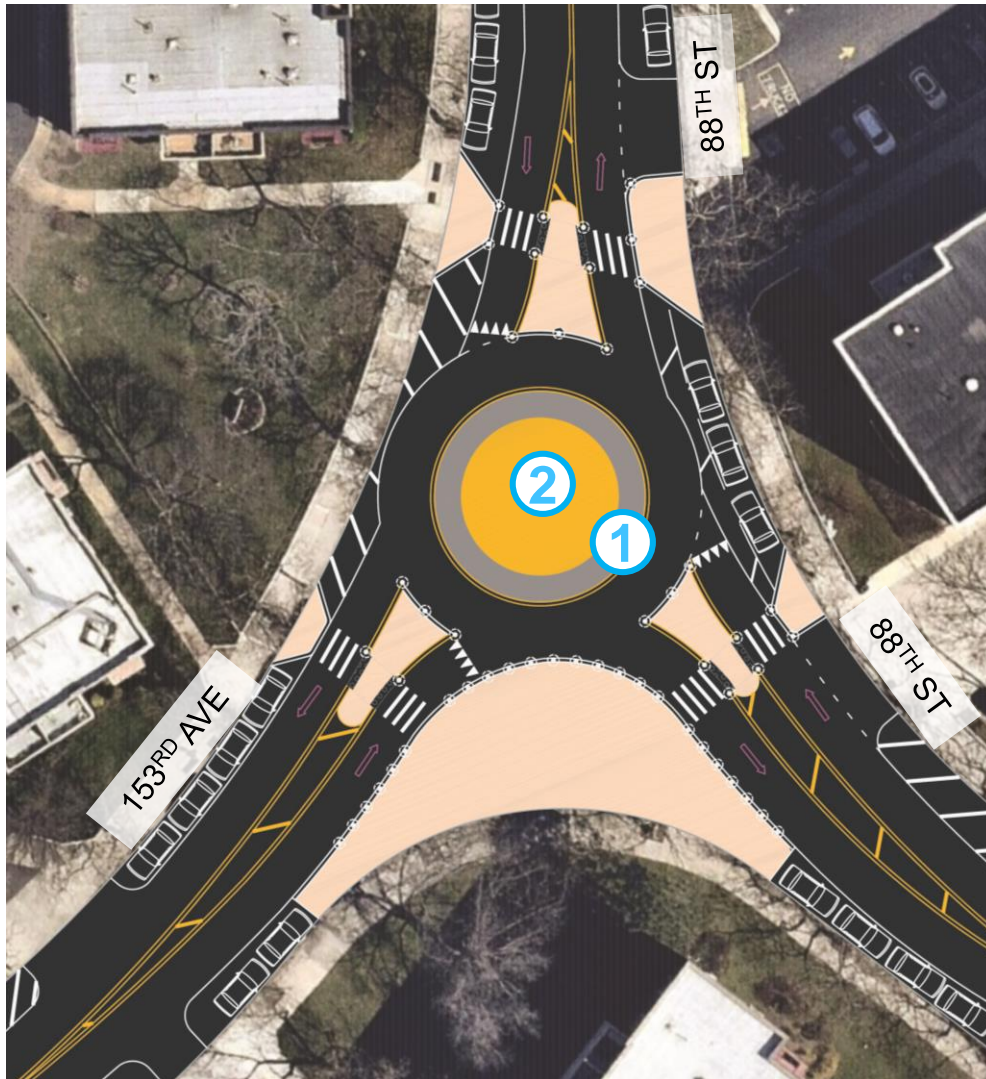


- ① Mini Roundabout
- ② New crossings with painted refuge islands and curb extensions
- ③ Additional pedestrian space
- ④ Flush median
- ⑤ Parking lane stripe



# PROPOSAL – MATERIALS

## Mini Roundabout



Example: Elmira, NY

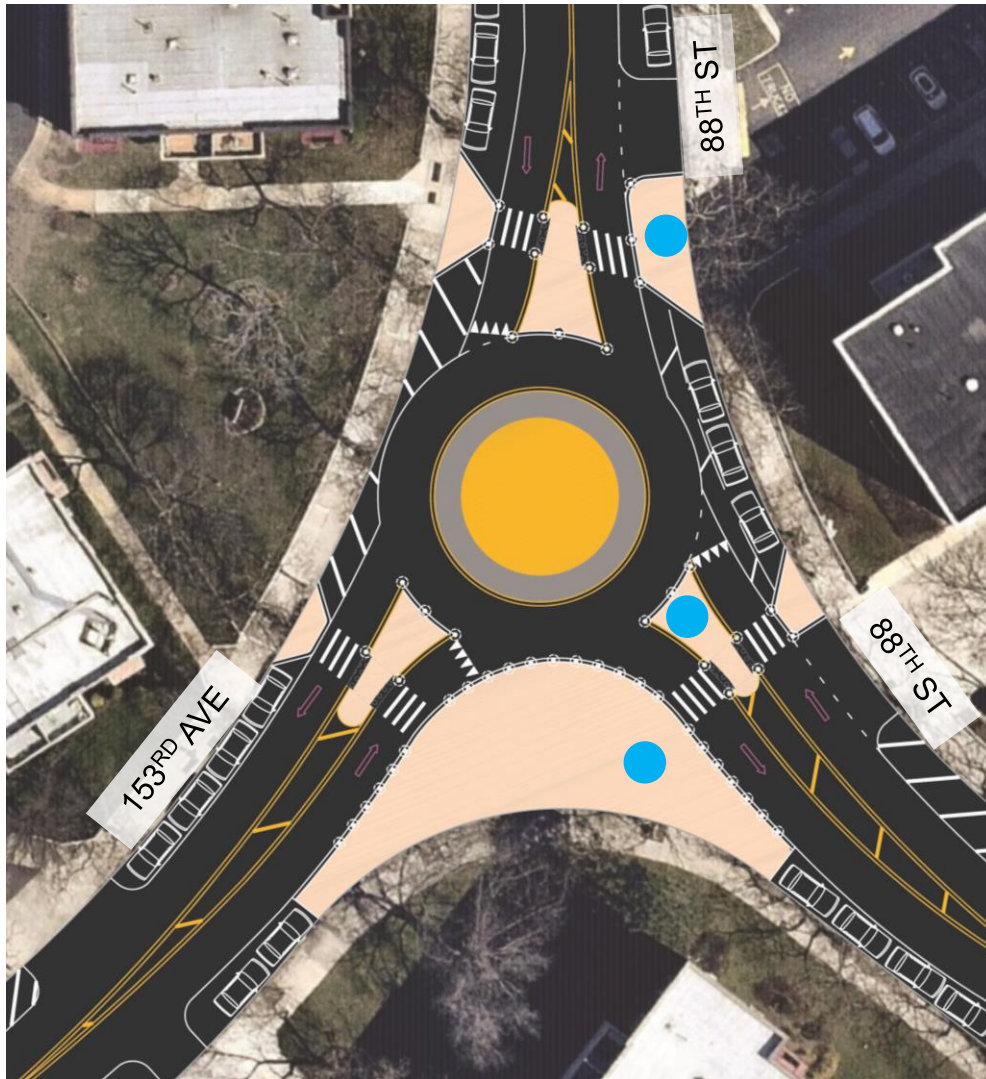
- ① Outer apron of center circle proposed in paint or other temporary mountable material\*
- ② Inner circle proposed in non-mountable material\*

(\*Materials to be determined)



# PROPOSAL – MATERIALS

## Curb Extensions and Refuge Islands



- Refuge islands and curb extensions proposed in paint and flexible delineators



# PROPOSAL – MATERIALS

## Signage



①



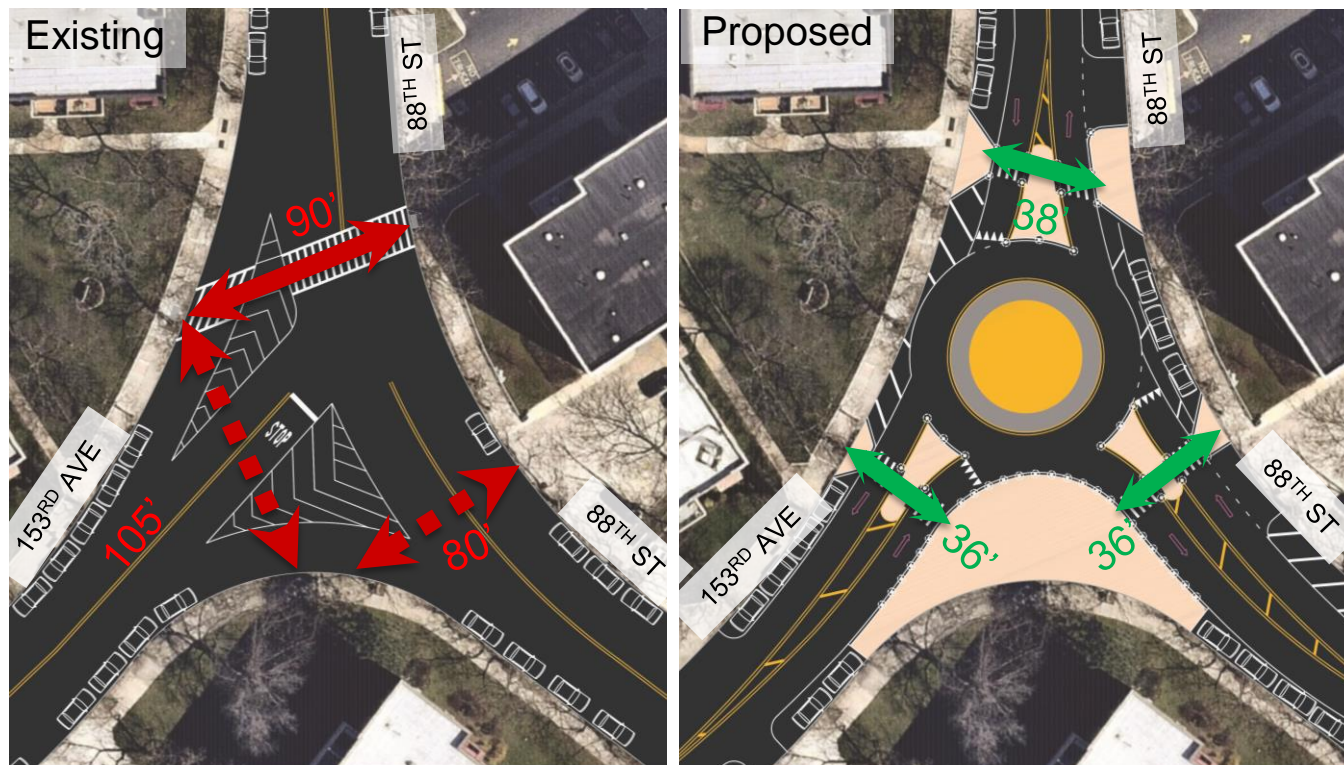
Yield Signage to be installed at all entrances to roundabout

②



Pedestrian warning signage to be installed in advance of crosswalks

# BENEFITS



- New shorter crossings clarify pedestrian paths and expand the pedestrian network
- Calms traffic on all approaches to intersection
- Reduces speeding by narrowing travel lanes through the addition of painted parking lanes and flush medians
- Large painted pedestrian space provides a new public space to the community



# NEARBY ENHANCED CROSSINGS – UNDER STUDY

5 additional Enhanced Crossings under study:

- 151<sup>st</sup> Ave and 85<sup>th</sup> St
- 151<sup>st</sup> Ave and 89<sup>th</sup> St
- 155<sup>th</sup> Ave and 86<sup>th</sup> St
- 155<sup>th</sup> Ave and 88<sup>th</sup> St
- 155<sup>th</sup> Ave and 89<sup>th</sup> St

Standard Enhanced Crossings treatment:



Pedestrian  
Warning Signage

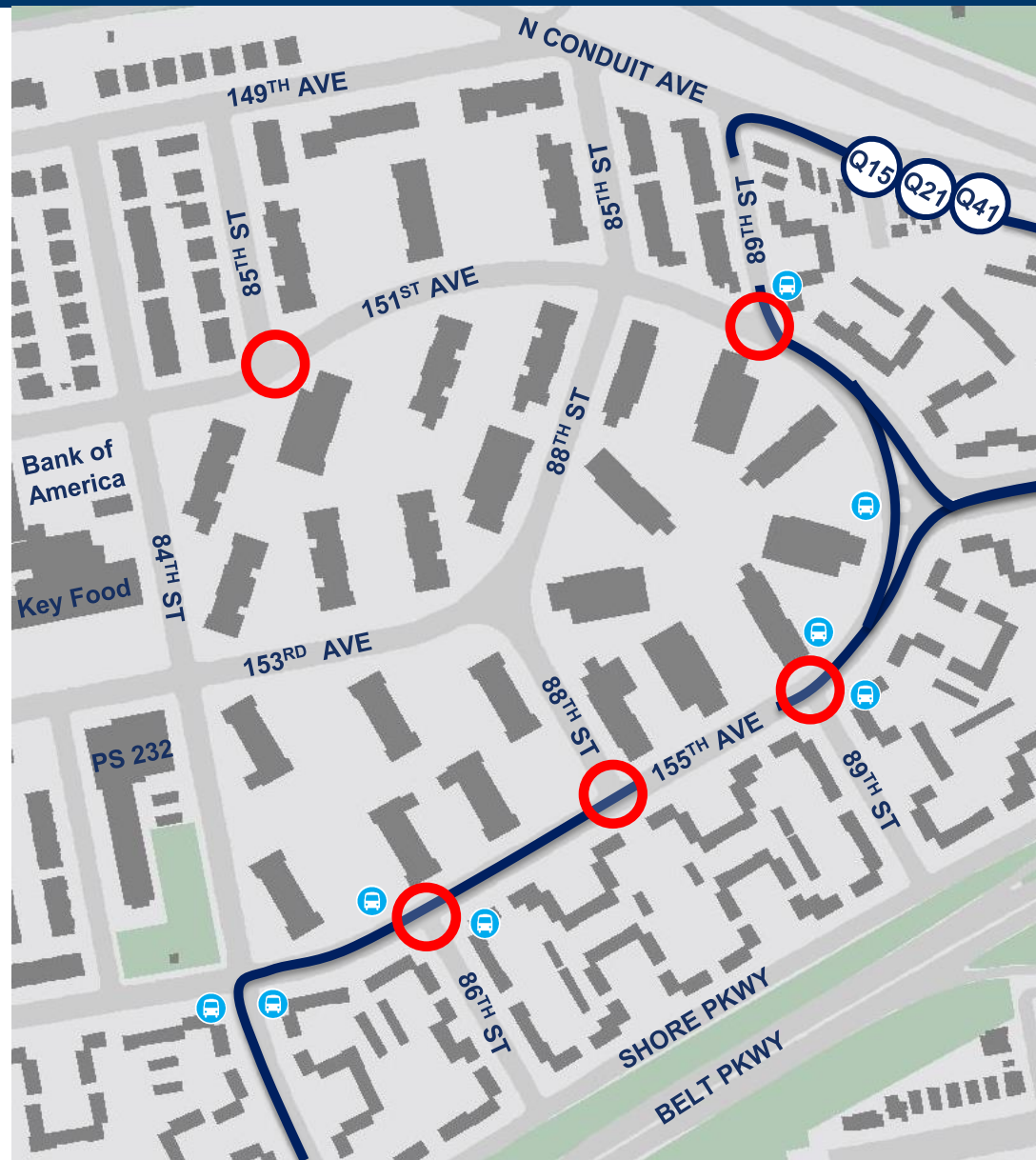


Americans with  
Disabilities Act  
(ADA)  
Compliant  
Pedestrian  
Ramps



High-Visibility Crosswalks  
and Daylighting

EC study  
locations   
Bus Stops 



# SUMMARY

- Reconfigure intersection as mini roundabout, relocating all turn movements to the circle
- Add marked crossings on each leg of roundabout
- Add painted neckdowns and pedestrian refuge islands at crossings
- Add large pedestrian space on south side of 153<sup>rd</sup> Ave and 88<sup>th</sup> St intersection
- Add parking lanes along length of 153<sup>rd</sup> Ave and 88<sup>th</sup> St
- Study additional enhanced crossings on 151<sup>st</sup> and 155<sup>th</sup> Aves





# THANK YOU!



## QUESTIONS?



NYC DOT



NYC DOT



nyc\_dot



NYC DOT