



# Liberty Avenue

---

Sutphin Blvd to Merrick Blvd

Queens CB 12 TC | June 2025

# Project Location

## Liberty Avenue

Sutphin Blvd to Merrick Blvd, 1.1 mi

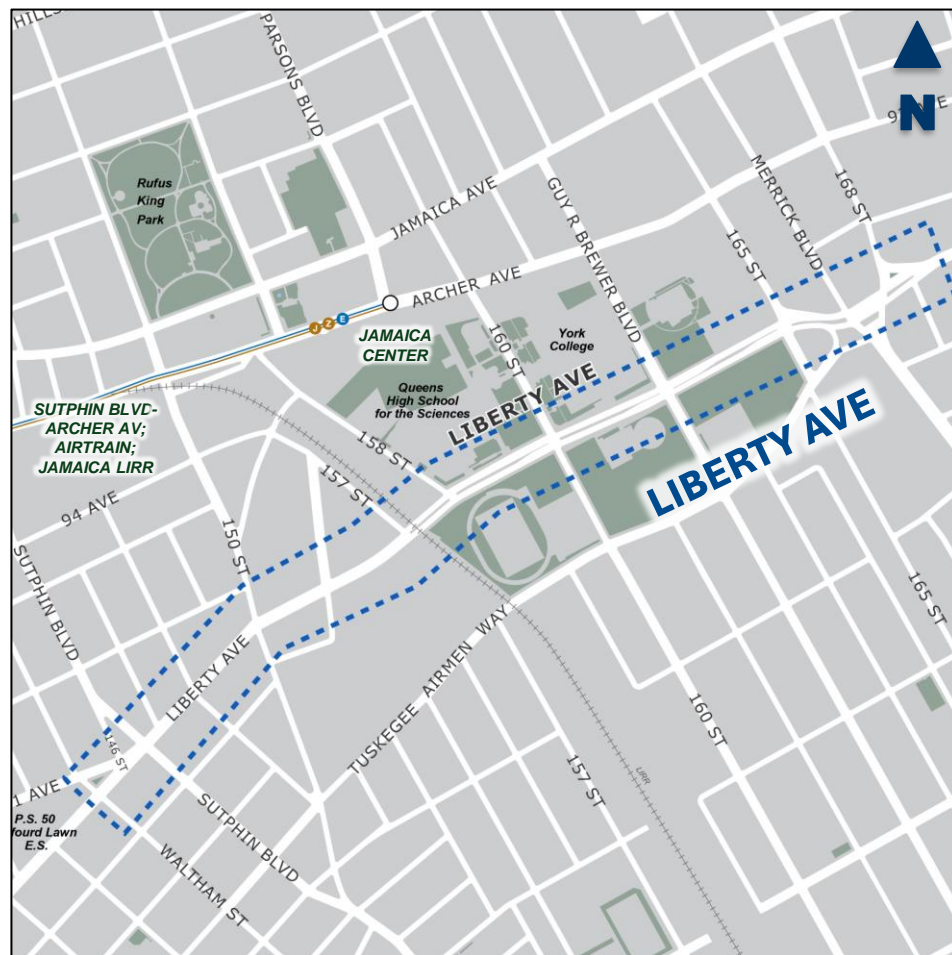
### South Jamaica Neighborhood

- Light industrial, institutional, and commercial along street
- Residential to the South
- Downtown Jamaica and Jamaica Center transit hub to the North

### High need for improvements:

- **Vision Zero Priority Corridor**
- **Vision Zero Priority Area**
- **Two VZ Priority Intersections**
  - Liberty Ave & Sutphin Blvd,
  - and Liberty Ave & 160<sup>th</sup> St
- **Crosses VZ Priority Corridors:**
  - Sutphin Blvd, 160<sup>th</sup> St, Guy R. Brewer Blvd, and Merrick Blvd
- **Tier 1 Priority Investment Area**

## Liberty Avenue, from Sutphin Blvd to Merrick Blvd





# Safety Data

Rates of fatalities and severe injury on Liberty Ave. are in the **top 10%** in Queens

Last 5 years:

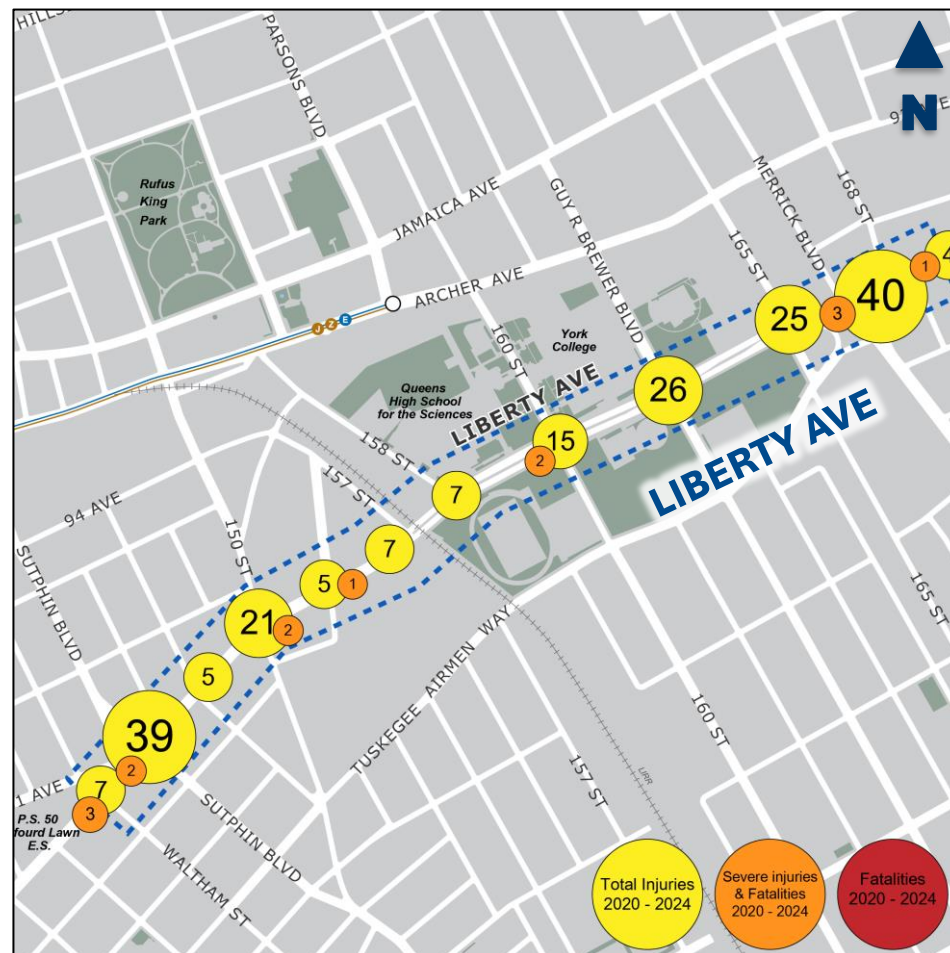
- **14 people killed or severely injured** in crashes
- 201 total injuries
  - 75% motor vehicle occupants

Injury Summary, 2020-2024 (5 Years)

Mode	Total Injuries	Severe Injuries	Fatalities	KSI
Pedestrian	33	6	0	6
Bicyclist	13	1	0	1
Motor Vehicle Occupant	148	6	0	6
Other Motorized	7	1	0	1
Total	201	14	0	14

Source: Fatalities: NYCDOT, Injuries: NYPD FORMS database KSI: Persons Killed or Severely Injured

## Crashes resulting in injuries, 2020-2024



# Crash Trends

## Fast vehicle speeds and pedestrian exposure to traffic

- **62% pedestrian injuries** occurred with pedestrian in the **crosswalk with the walk signal**
  - **Queens-wide: 36%** ped injuries in the crosswalk with the signal
- **52% motor-vehicle injuries** were due to **right-angle and rear-end crashes**
  - **Queens-wide: 46%** MV injuries
  - Indicative of **speeding on the corridor**





# Existing Conditions

---

**Wide, disorganized lanes,  
long pedestrian crossings  
and high speeds**

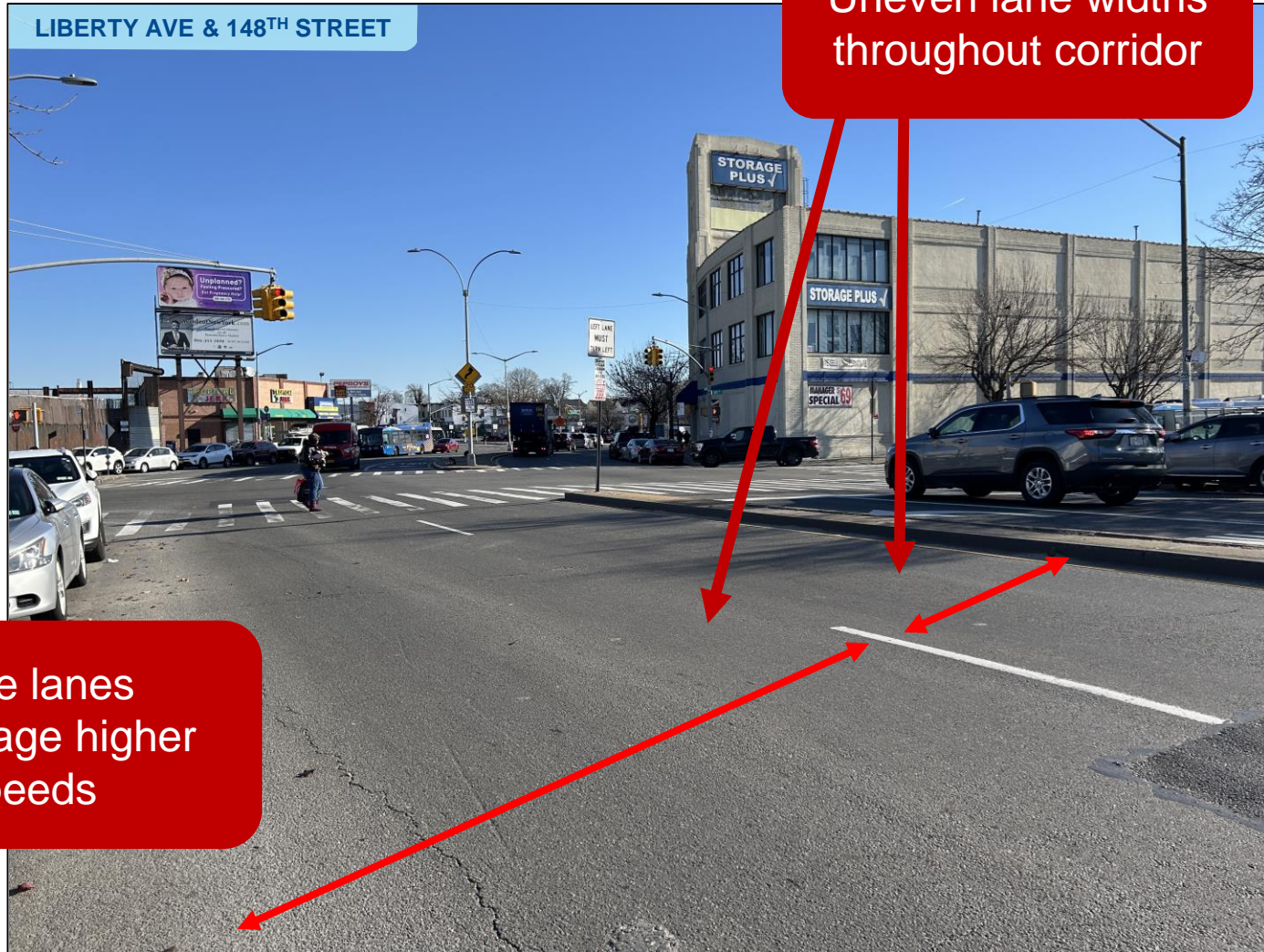
- **Wide street** encourages high vehicle speeds
- **Lack of markings** reduces roadway organization
- **Large intersections with fast turns and lack of pedestrian refuges** creates dangerous conditions for pedestrians



LIBERTY AVE & 148<sup>TH</sup> STREET

# Existing Conditions

Wide roadway with lack of markings





# Existing Conditions

Long crossing distances with no protection for pedestrians



Faded crosswalk

Long crossing distances  
with no safe place to wait;  
No protection from turning  
vehicles

# Proposed Improvements

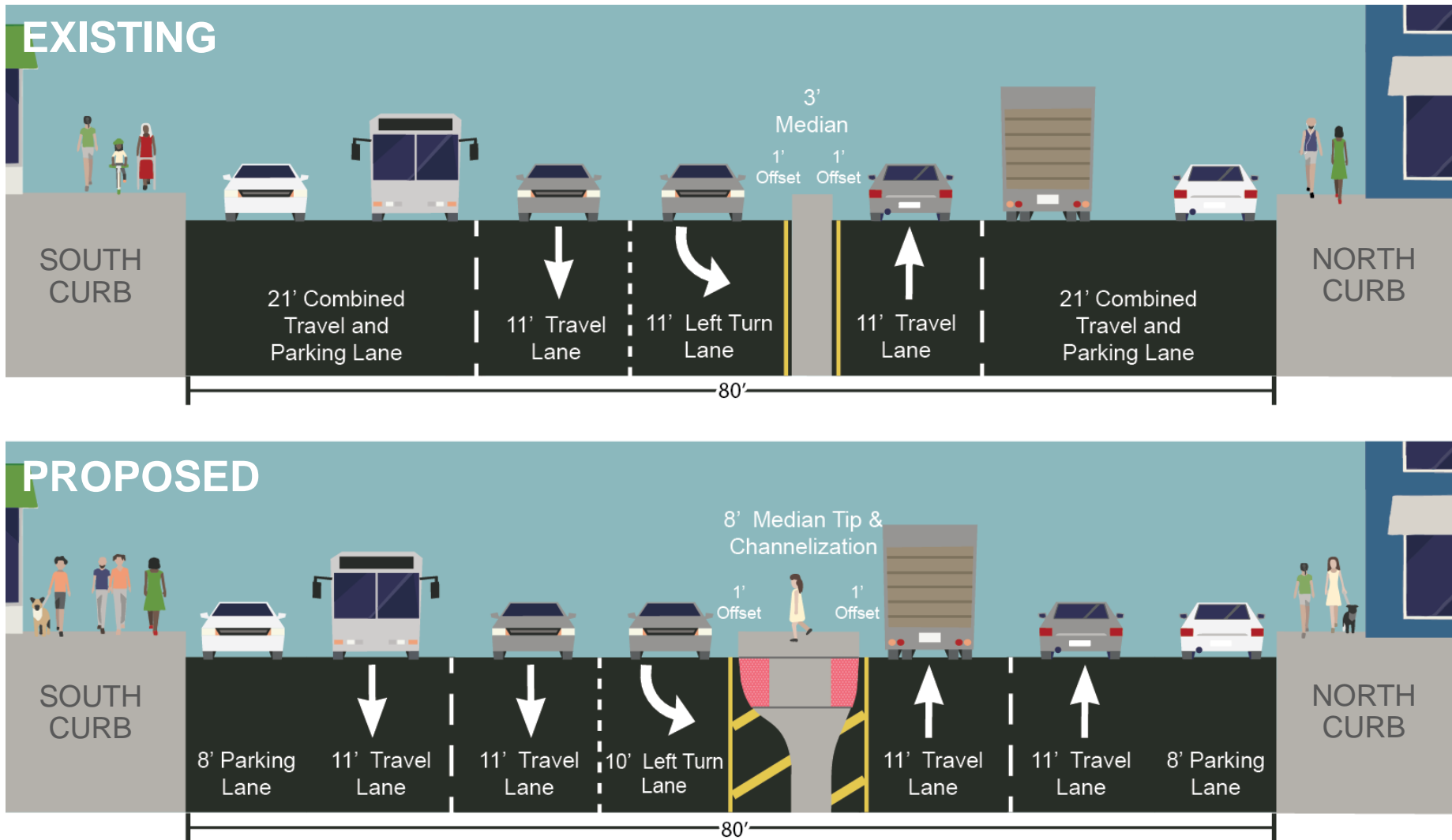
- **Install median tips and pedestrian refuge islands** to increase yielding to pedestrians, slow down turning traffic, and provide a safe place to wait mid-crosswalk
- **Add curb extensions** to increase yielding to pedestrians, shorten crossing distances, provide a safe place to wait, and improve visibility to drivers
- **Update lane markings** to create consistent 11' wide travel lanes, which calm speeds and help organize the roadway to improve predictability and safety



JAMAICA AVENUE, QUEENS

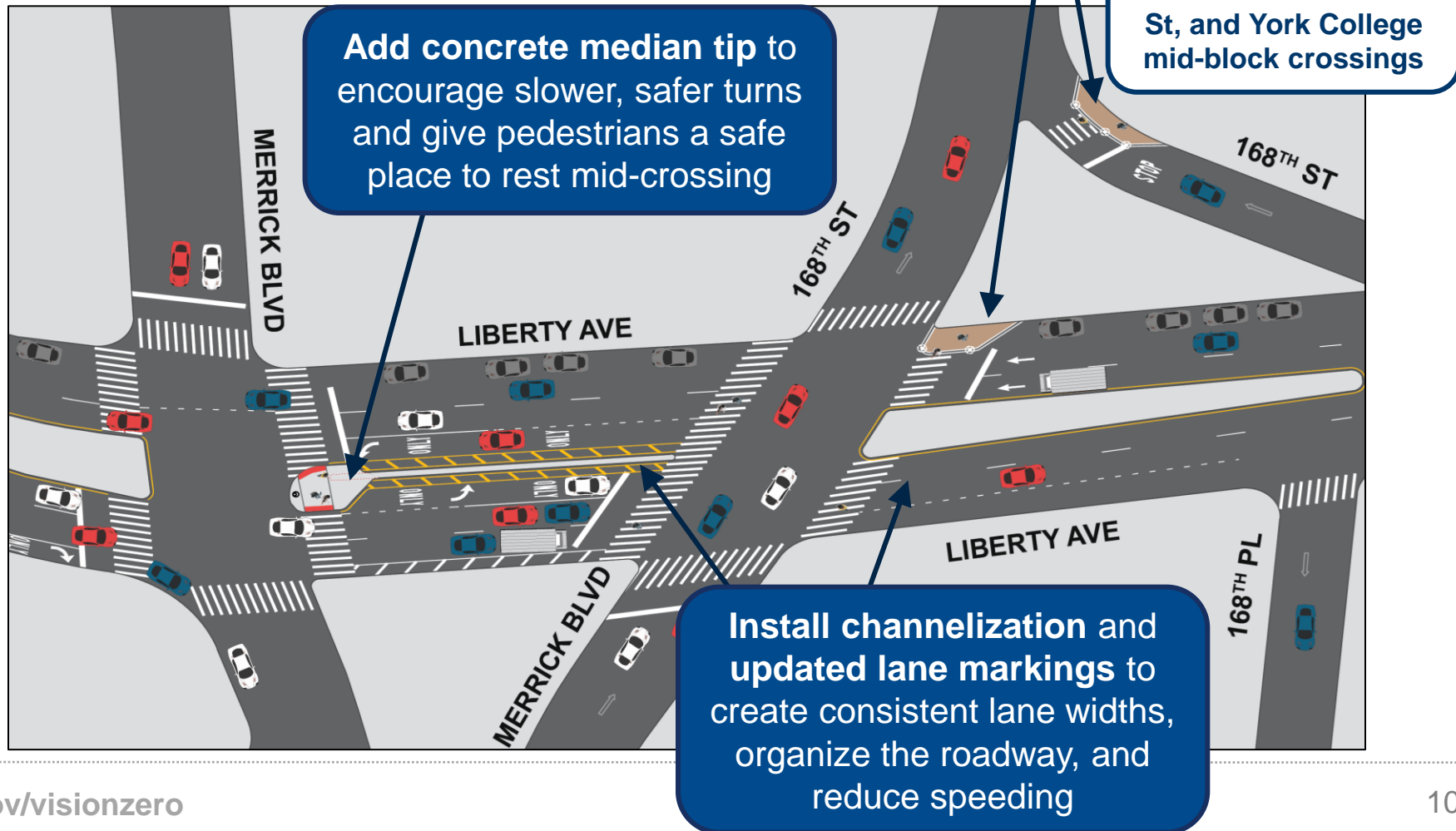


# Liberty Avenue Typical Intersection



# Proposed Improvements

## Merrick Boulevard/168<sup>th</sup> Street





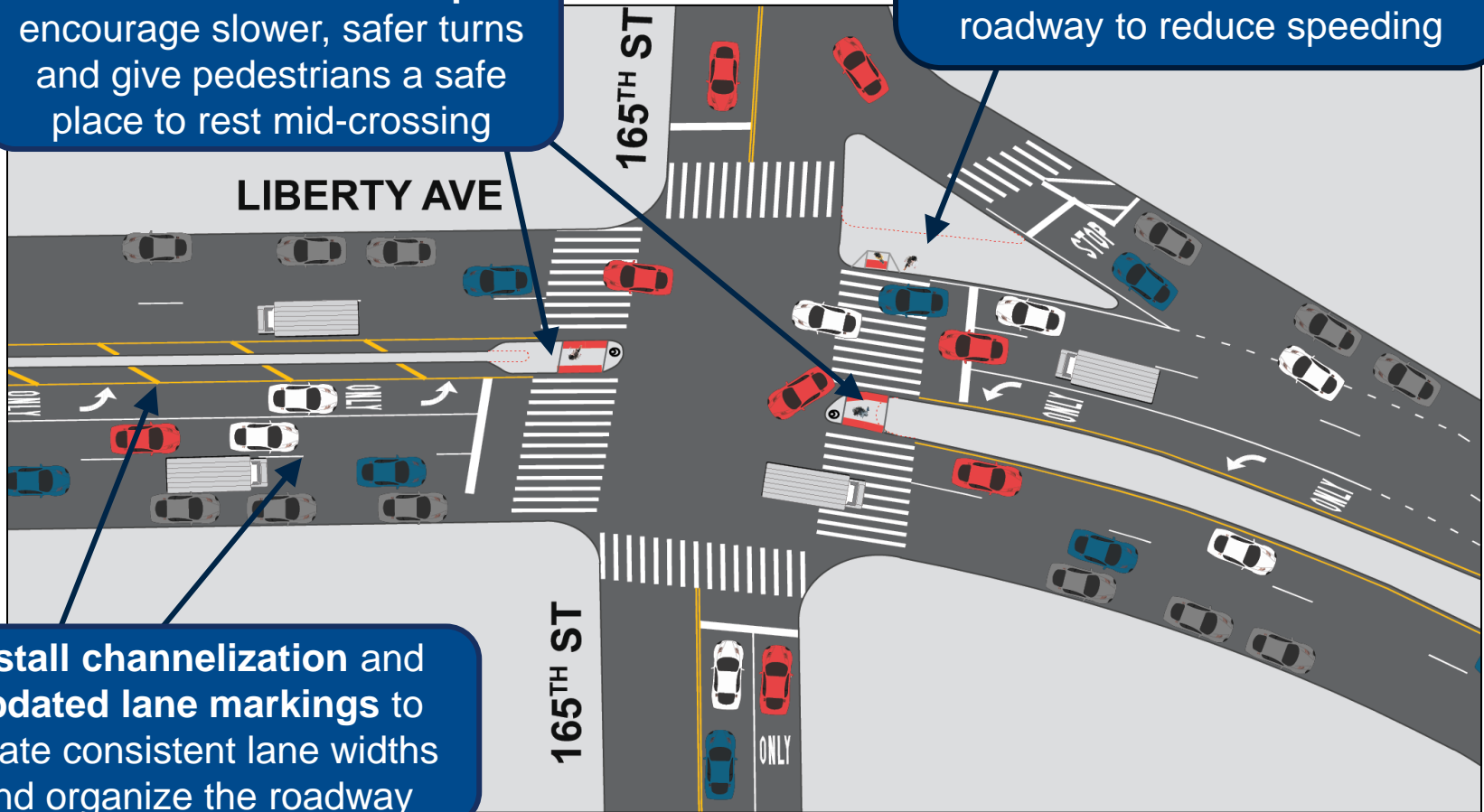
# Proposed Improvements

## 165<sup>th</sup> Street

**Add concrete median tip** to encourage slower, safer turns and give pedestrians a safe place to rest mid-crossing

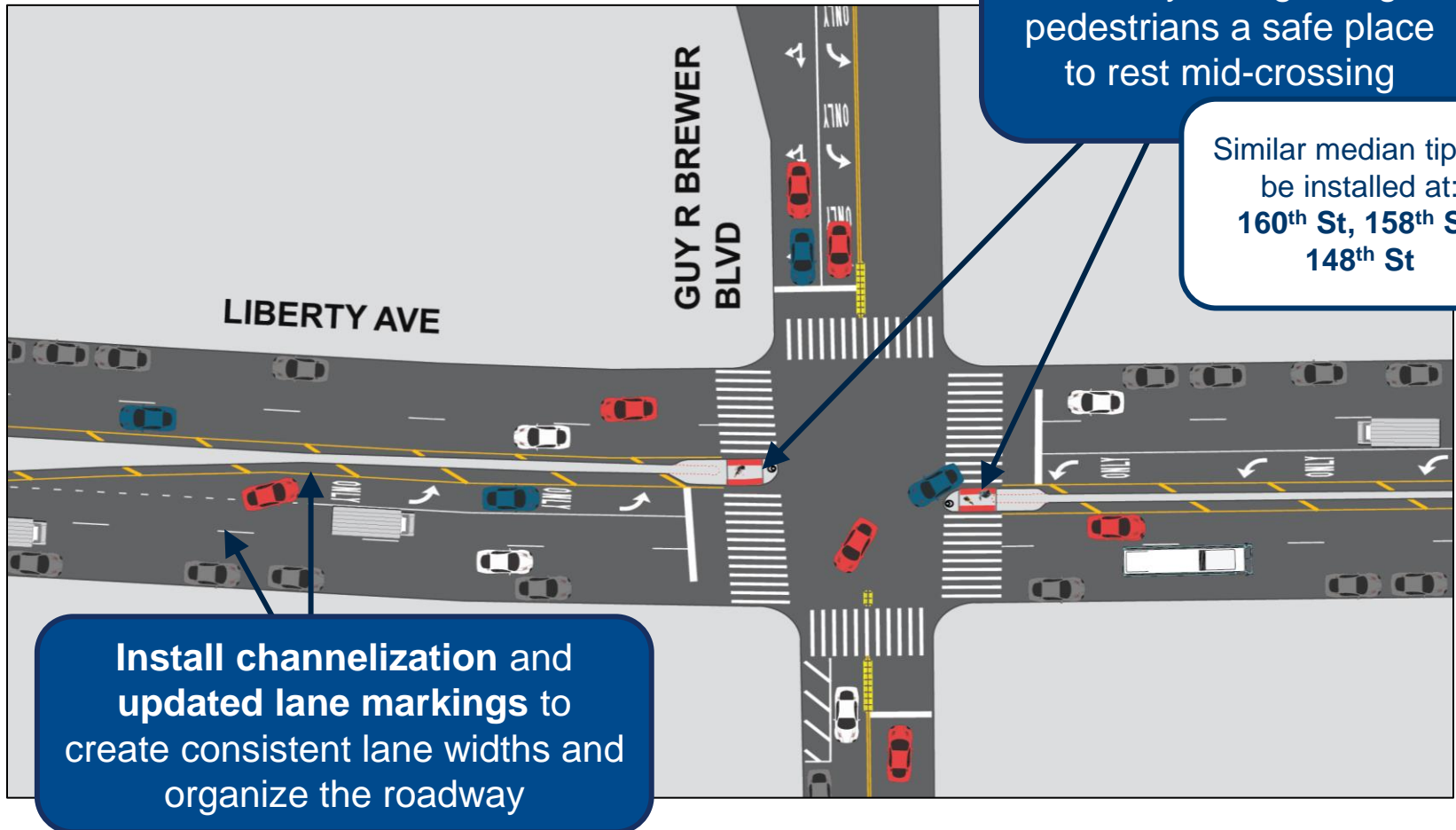
**Add concrete curb extension** on the pedestrian refuge island to shorten crossing distances and narrow the roadway to reduce speeding

**Install channelization and updated lane markings** to create consistent lane widths and organize the roadway



# Proposed Improvements

## Guy R. Brewer Blvd





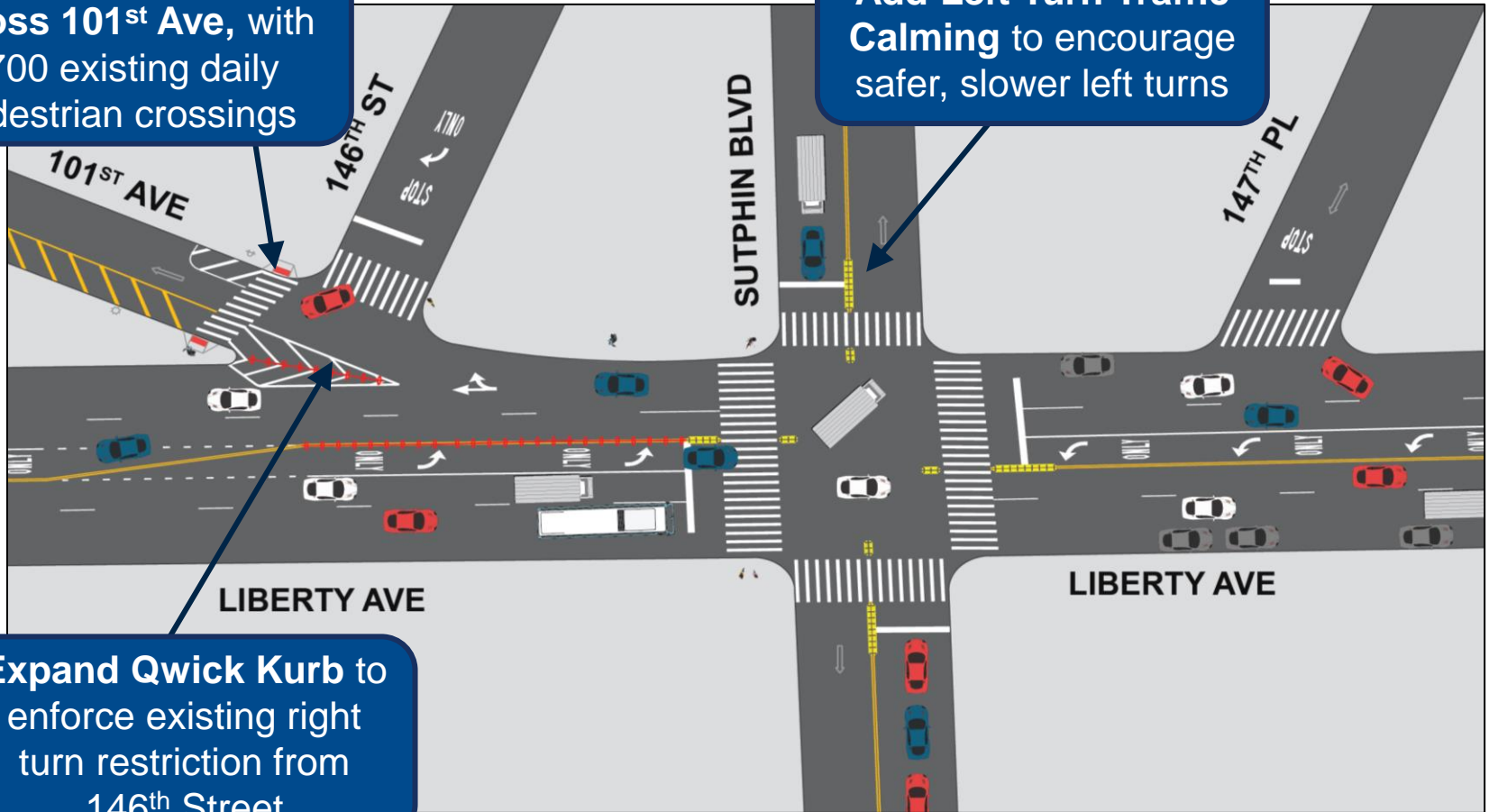
# Proposed Improvements

## Sutphin Blvd, 101<sup>st</sup> Avenue, and 146<sup>th</sup> Street

**Add new crosswalk**  
across 101<sup>st</sup> Ave, with  
~700 existing daily  
pedestrian crossings

**Add Left Turn Traffic  
Calming** to encourage  
safer, slower left turns

**Expand Qwick Kurb** to  
enforce existing right  
turn restriction from  
146<sup>th</sup> Street



# Project Benefits

- **Concrete Median Tips**
  - Provide pedestrian refuge and encourage slower, safer vehicle turns and increase yielding at 5 intersections
- **Concrete Refuge Islands**
  - Provide pedestrian refuge and encourage slower, safer vehicle turns and increase yielding at 148<sup>th</sup> St
- **Curb Extensions**
  - Shorten crossing distances and encourage slower, safer vehicle turns at 5 crossings
- **Left Turn Traffic Calming + Qwick Kurb**
  - Calm turns to improve pedestrian safety at 2 intersections
- **Updated Markings**
  - Organize the roadway and reduce speeding across the corridor



E 144<sup>th</sup> ST & GRAND CONCOURSE, BRONX



# Thank You!

Questions?



NYCDOT



nyc\_dot



nyc\_dot



NYCDOT