



LOWER EAST SIDE SCHOOL SAFETY IMPROVEMENTS

Presentation for CB 3

June 19, 2019

LES School Safety Street Improvements Project

Pre-Meetings with Schools Within Project Area

- P.S. 134
- P.S. 110
- P.S. 184
- University Neighborhood High School
- University Neighborhood Middle School
- East River Child Development Center
- Orchard Collegiate Academy
- NYC Center for Aerospace and Applied Mathematics
- Manhattan Charter School II



LES School Safety Improvements

Vision Zero

- Multi-agency effort to reduce traffic fatalities in NYC
- Borough Action Plans released in 2019
- Priority Intersections, Corridors, and Areas identified for each borough

Grand St

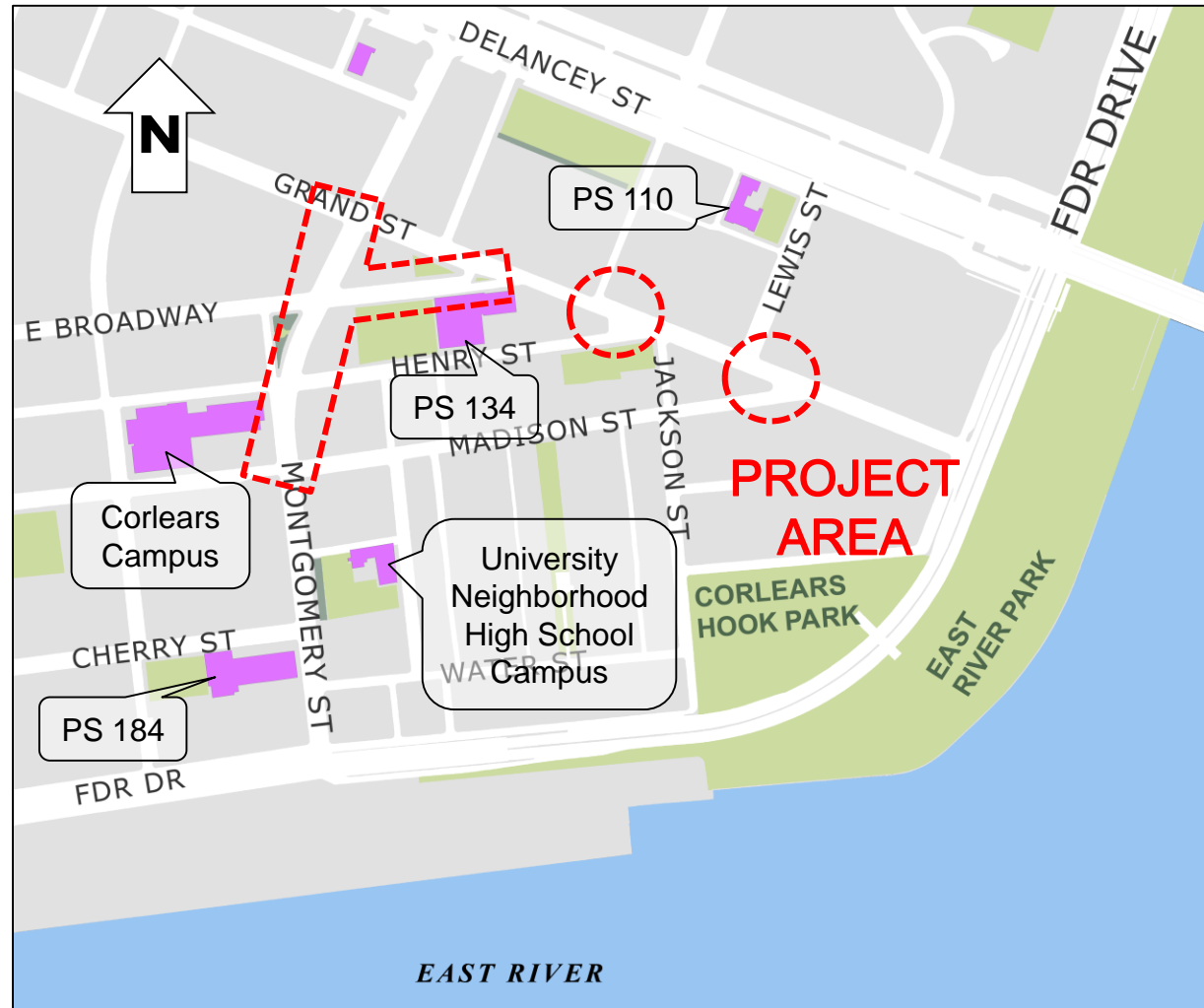
- Grand Street is a Vision Zero Priority Corridor



LES School Safety Improvements

Project Area

- Community request for safety improvements at East Broadway/Grand St by P.S. 134
- Project area used by students accessing nearby schools
- Erratic driving at intersections heavily used by students
- Senior safety area



Montgomery St and Grand St Crash Data (2013-2017)

- 80 total injuries
- 8 severe injuries
- 50% of severe injuries were pedestrians

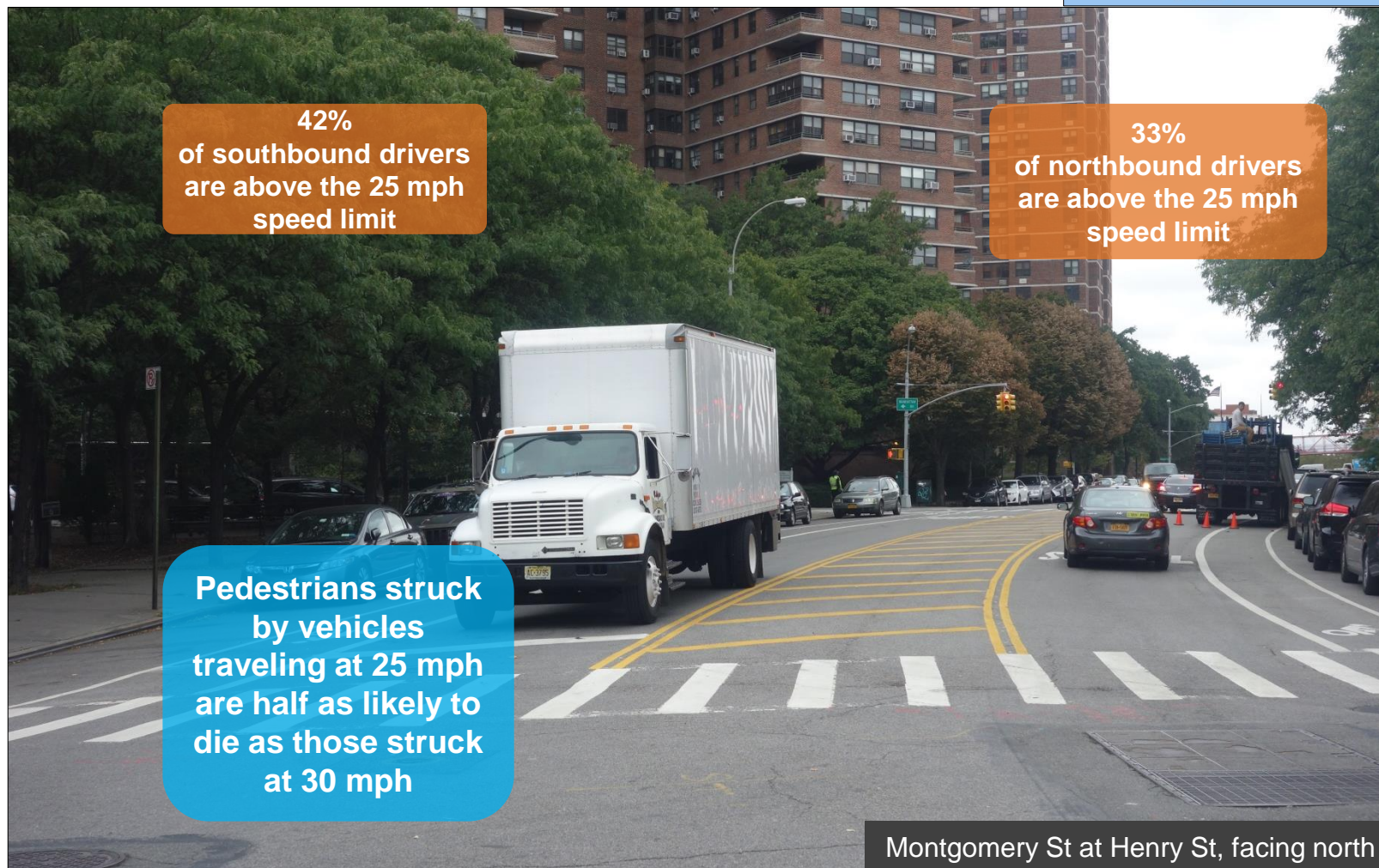
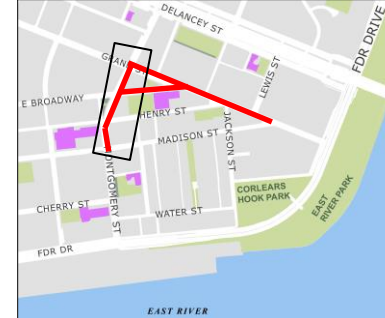
Injury Summary 2013-2017	(5 Years)			
	Total Injuries	Severe Injuries	Fatalities	KSI
Pedestrian	13	4	0	4
Bicyclist	21	3	0	4
Motor Vehicle Occupant	46	1	0	1
Total	80	8	0	9

Source: Fatalities: NYCDOT
Injuries: NYSDOT
KSI: Persons Killed or Severely Injured



Montgomery St (Madison St to Grand St)

Existing: Wide Roadway Encourages Speeding



Montgomery St (Madison St to Grand St)

Existing: Large Intersection with Fast Vehicle Turns



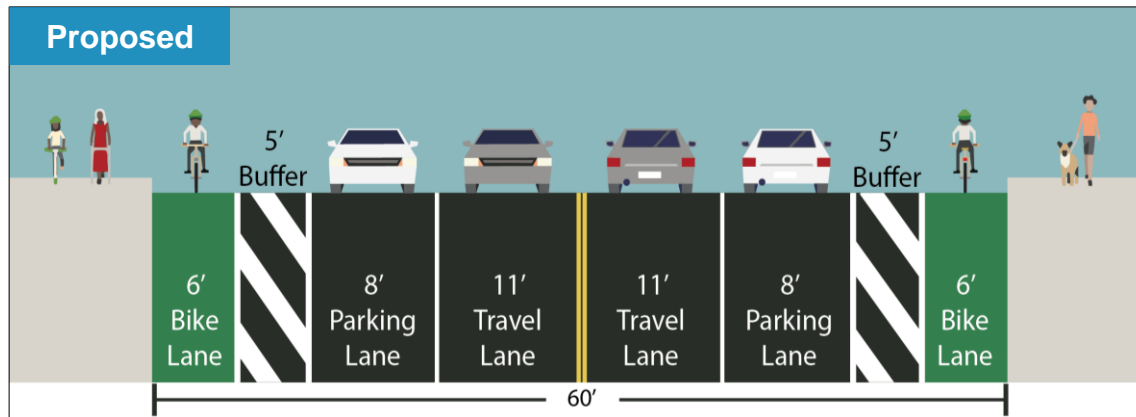
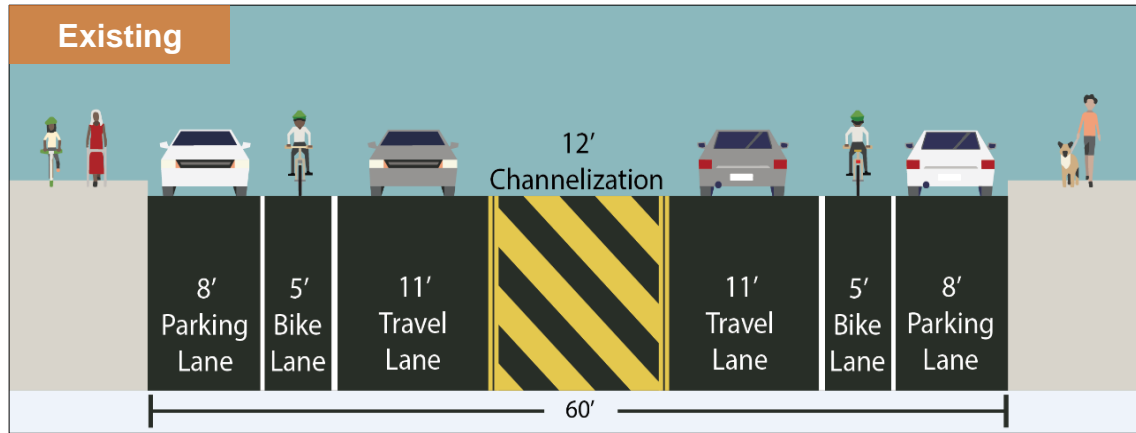
Large intersections encourage fast vehicle turns

Long crossing distances

Montgomery St at Henry St

Montgomery St (Madison St to Grand St)

Proposal: Lane Reconfiguration



Narrower roadway encourages lower vehicle speeds and shortens pedestrian crossings

New protected bike lanes provide dedicated, safer space for cyclists

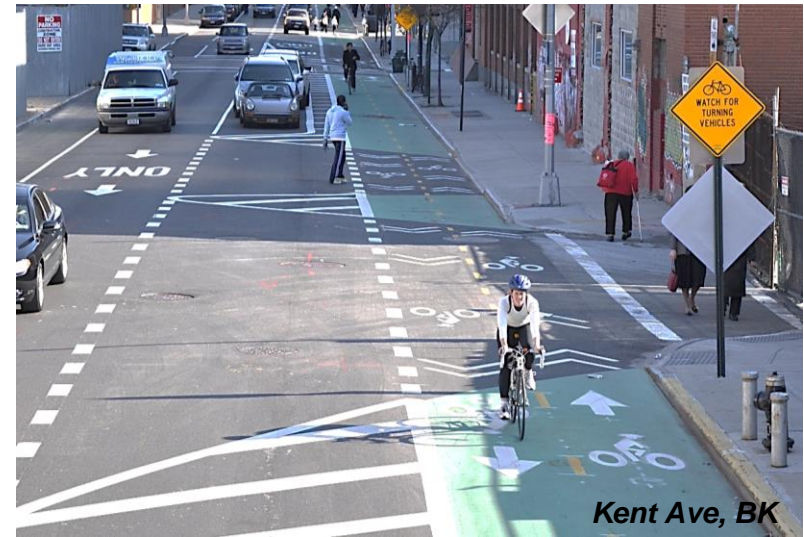
Safety – Protected Bike Lanes

Street designs that include protected bike lanes increase safety for all users

-15% drop in all crashes with injuries

-21% drop in pedestrian injuries

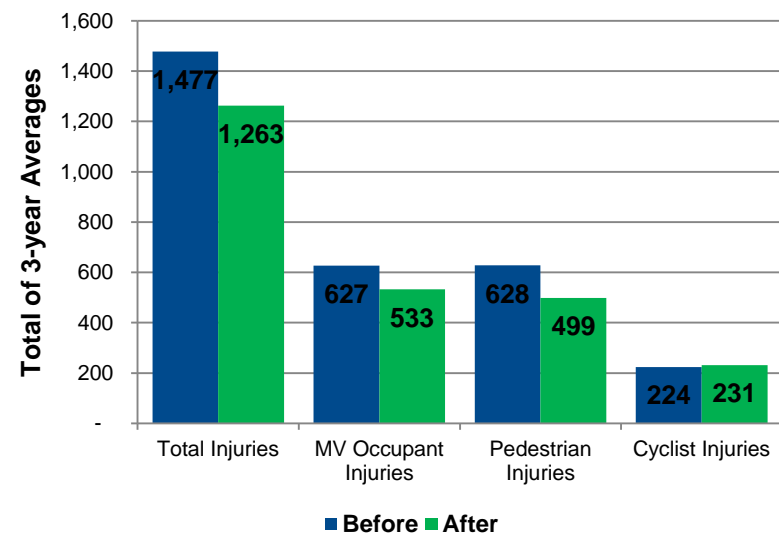
on streets where protected bike lanes were installed 2007-2017



Kent Ave, BK

Protected Bike Lanes

Before and After Crash Data, 2007 - 2017



Prospect Park W, BK

Data from 25 separate protected bicycle lane projects installed from 2007-2014 with 3 years of after data. Includes portions of 1 Ave, 2 Ave, 8 Ave, 9 Ave, Broadway, Columbus Ave, Hudson St, Lafayette St / 4 Ave, Sands St, Allen/Pike St, Kent Ave, Prospect Park West, Flushing Ave, Bruckner Blvd & Longfellow Ave, Imlay St / Conover St, Paerdegat Ave. Only sections of projects that included protected bike lanes were analyzed.
Source: NYPD AIS/TAMS Crash Database

Montgomery St (Madison St to Grand St)

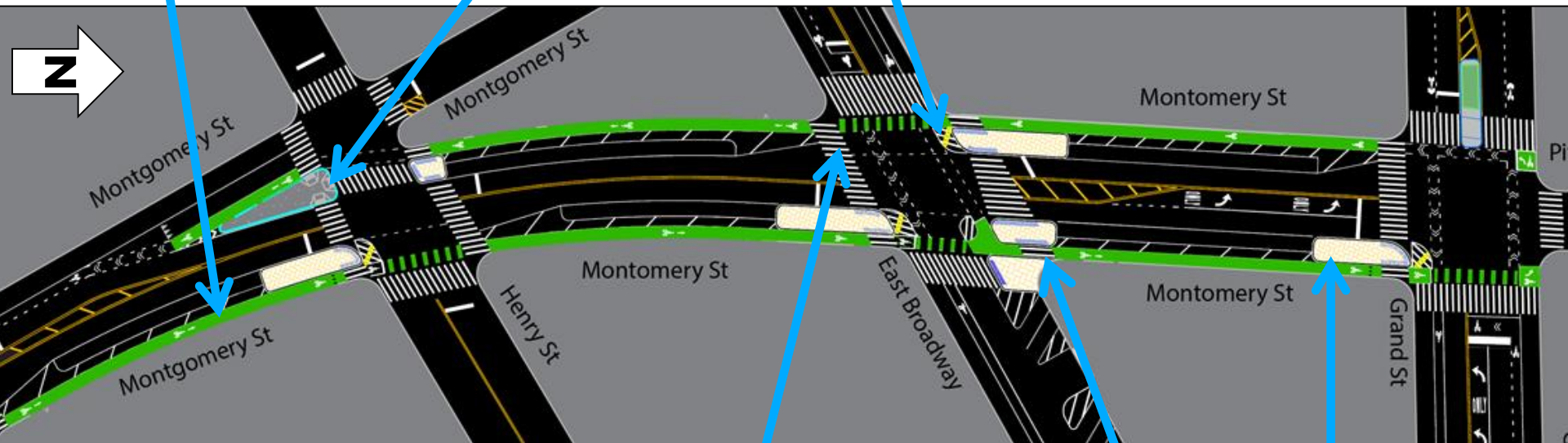
Proposal: Traffic Calming and Pedestrian Treatments



Upgrade standard bike lanes to protected bike lanes

Construct concrete pedestrian island

Install rubber speed bumps to slow turns



Shorter crossings

Install painted pedestrian islands



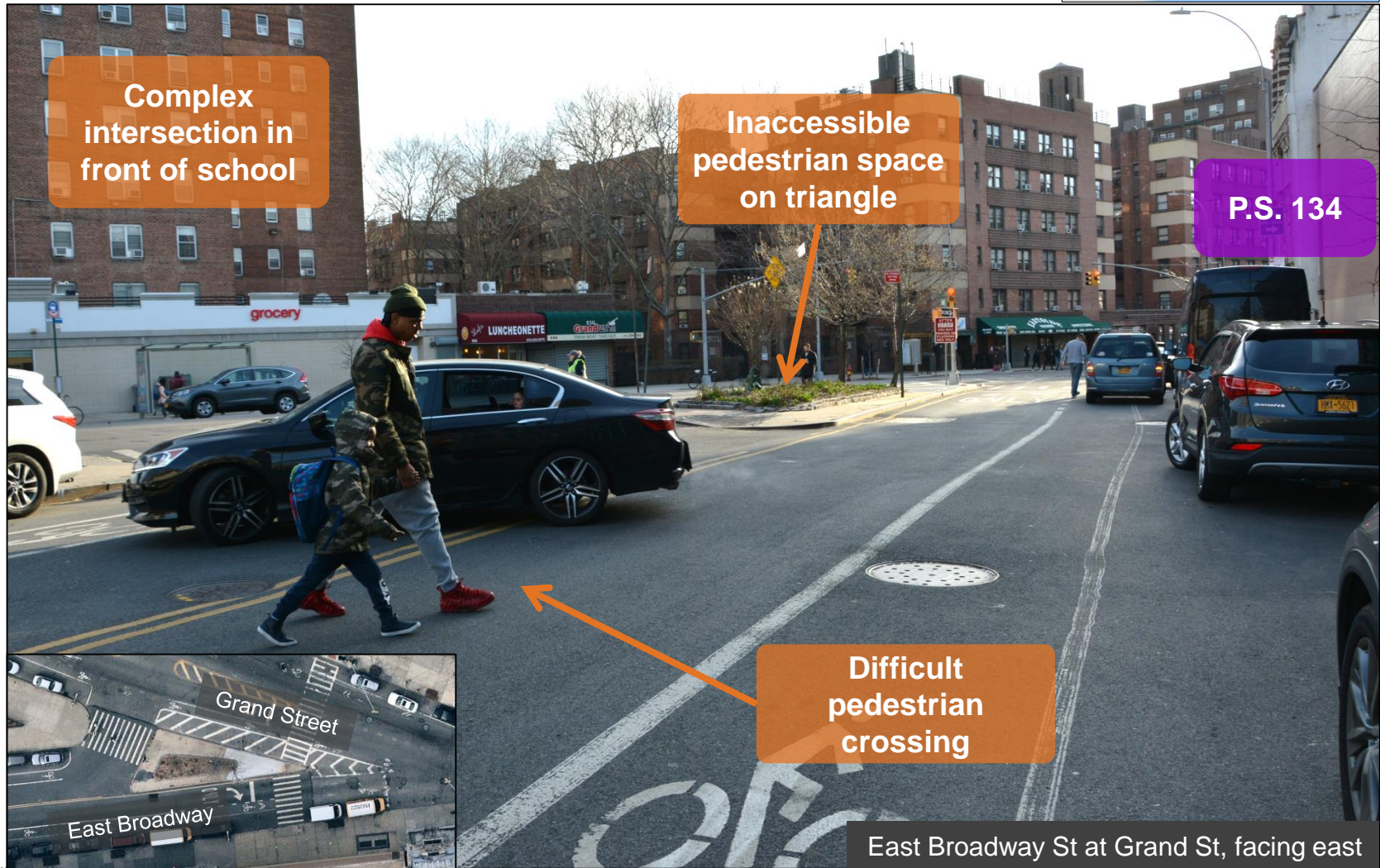
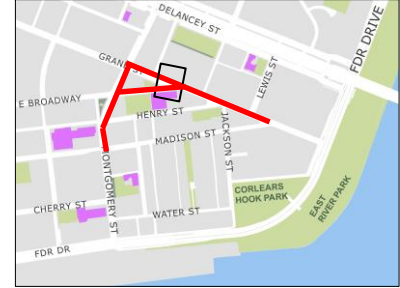
Montgomery St (Madison St to Grand St)

Traffic Calming: Rubber Speed Bumps



East Broadway and Grand St

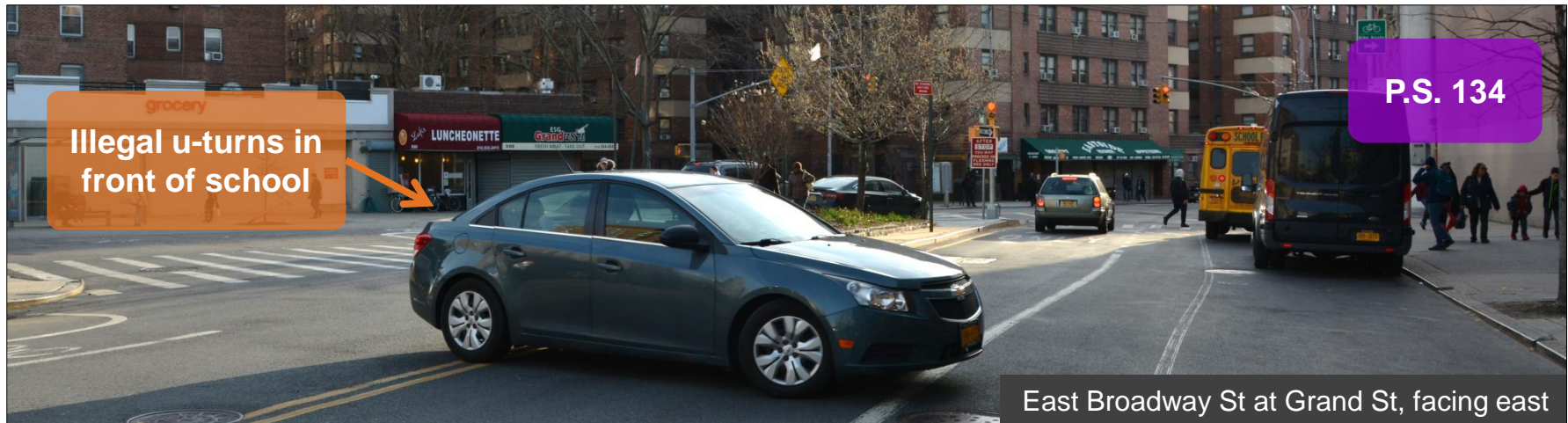
Existing: Difficult Pedestrian Crossing by School



East Broadway St at Grand St, facing east

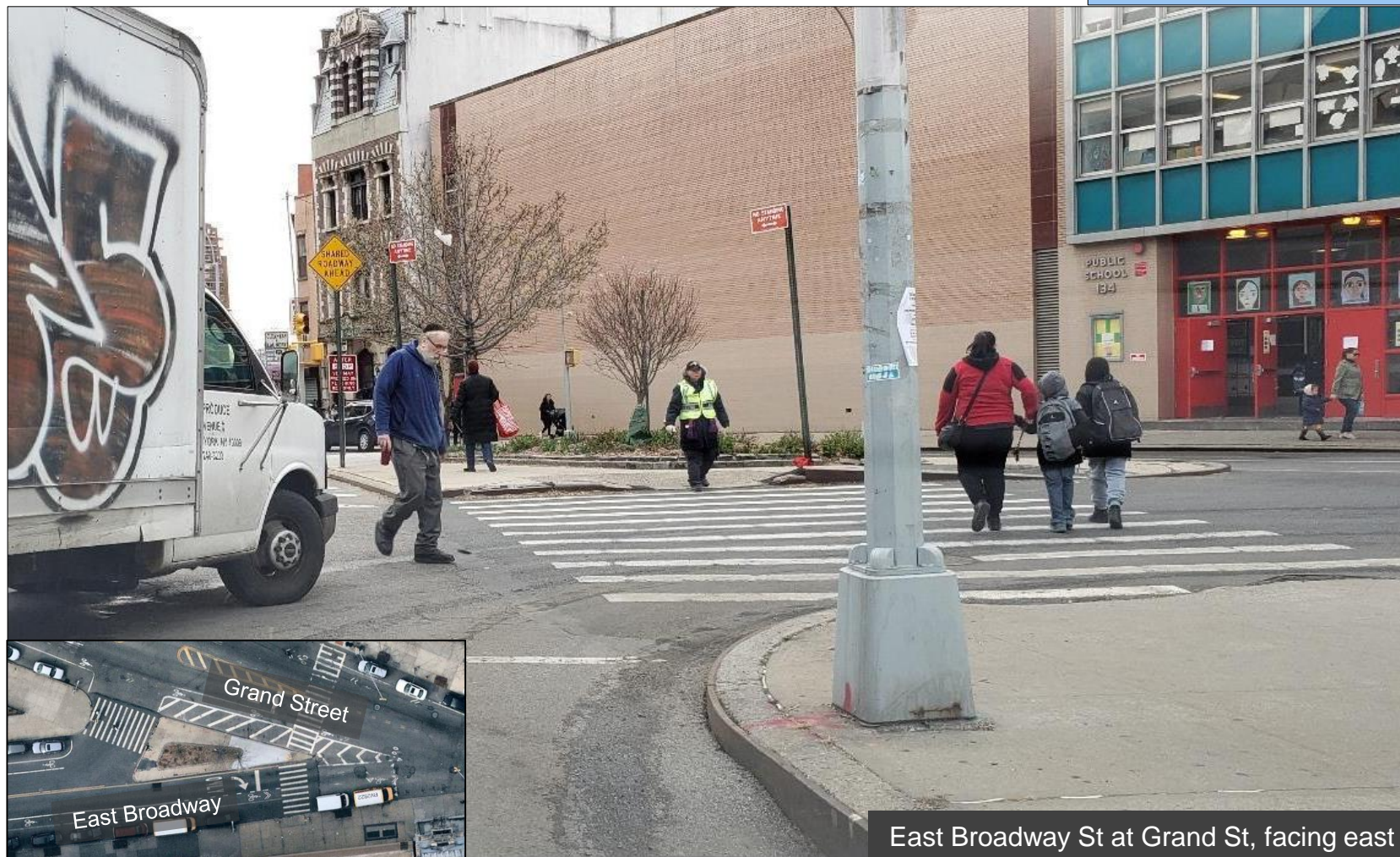
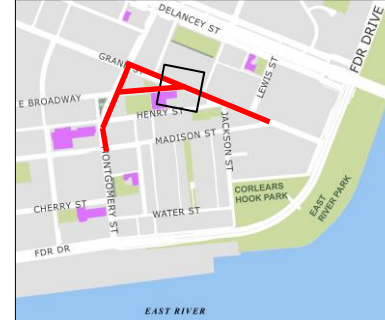
East Broadway and Grand St

Existing: Dangerous Vehicle Maneuvers by School



East Broadway and Grand St

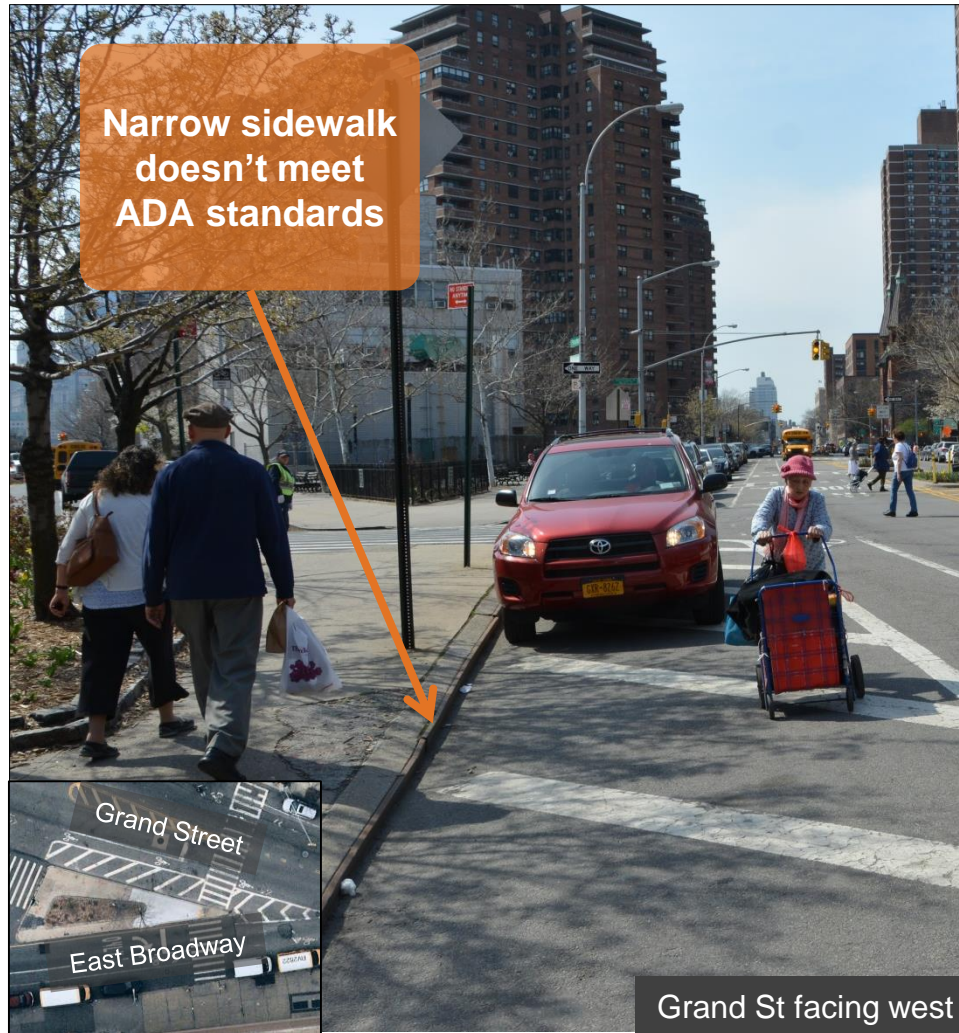
Existing: Difficult Pedestrian Crossing by School



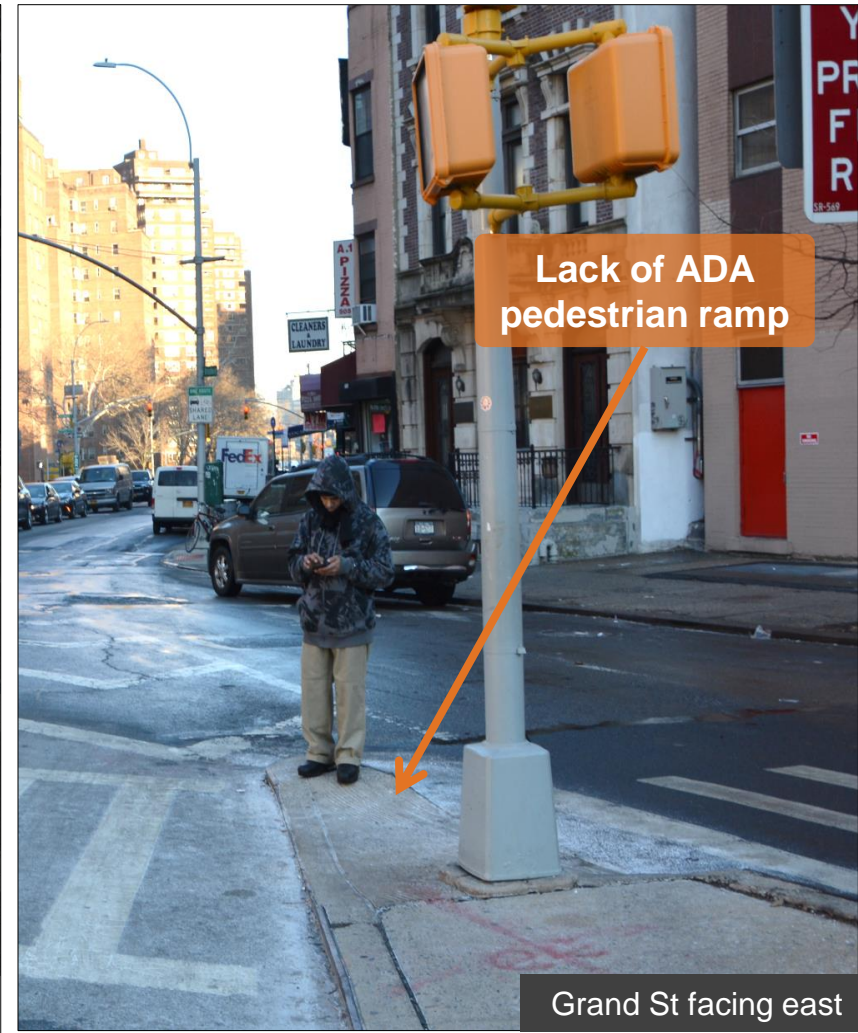
East Broadway St at Grand St, facing east

East Broadway and Grand St

Existing: Inaccessible Pedestrian Island



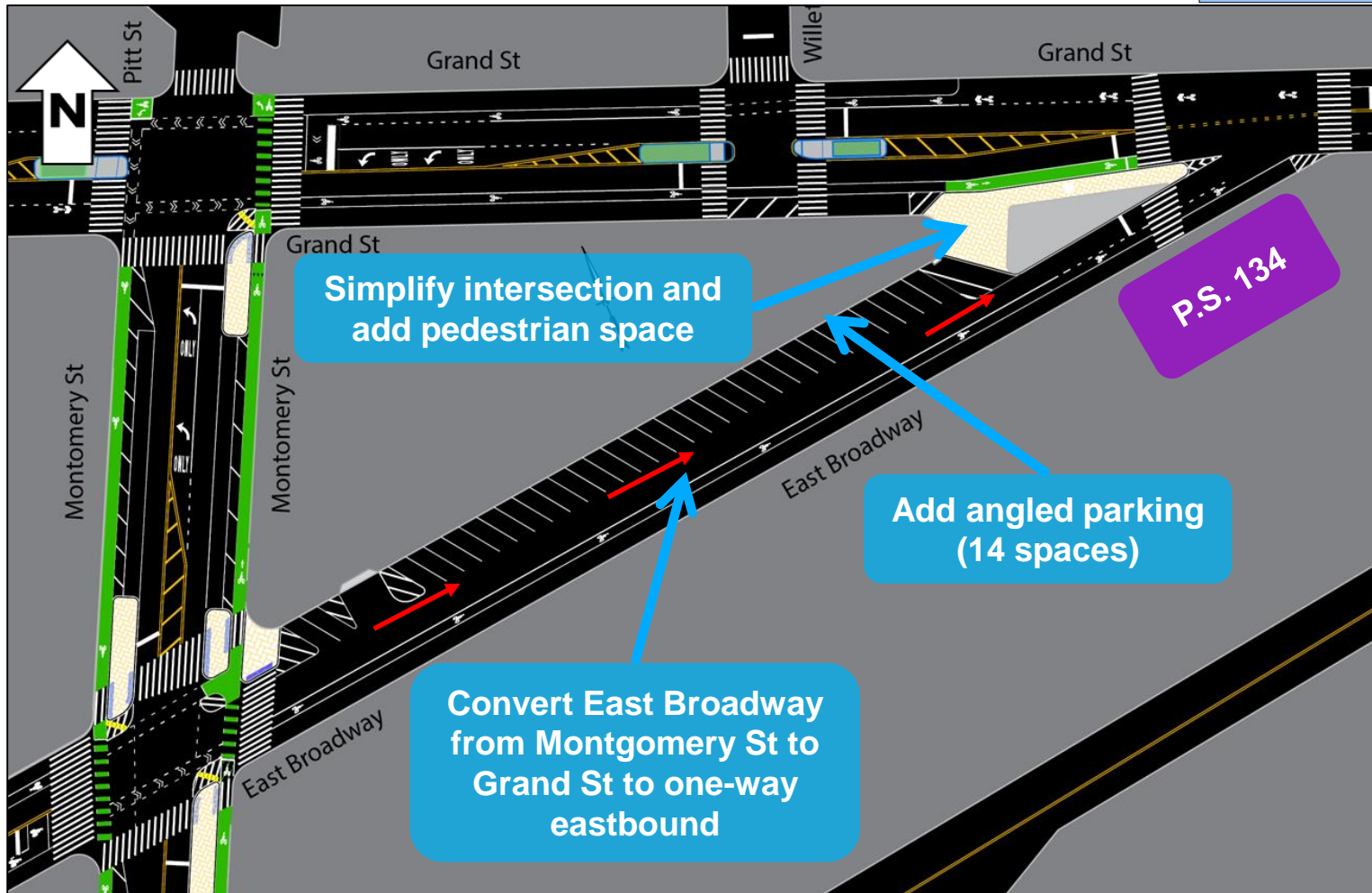
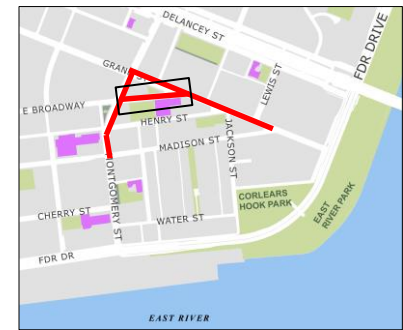
Grand St facing west



Grand St facing east

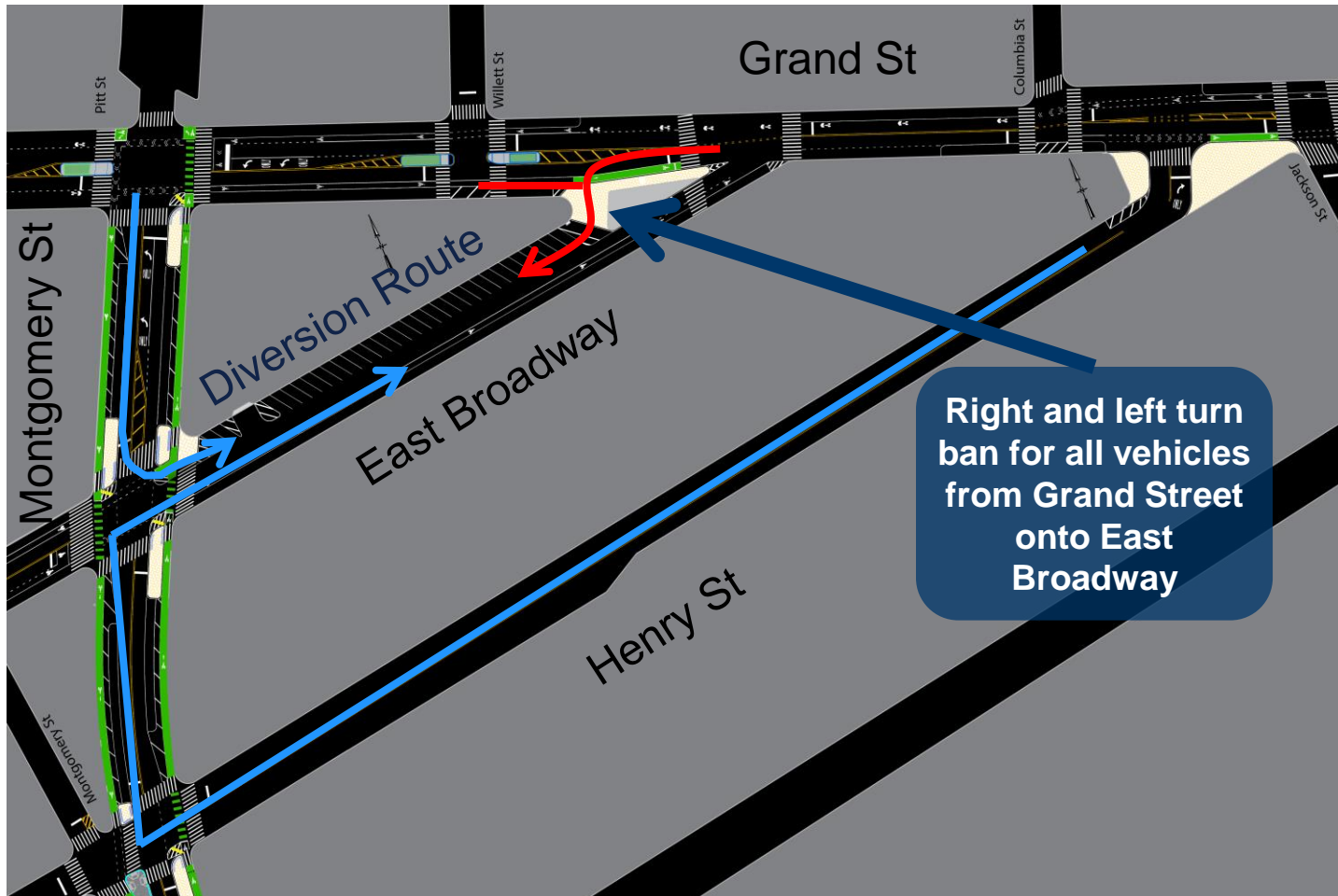
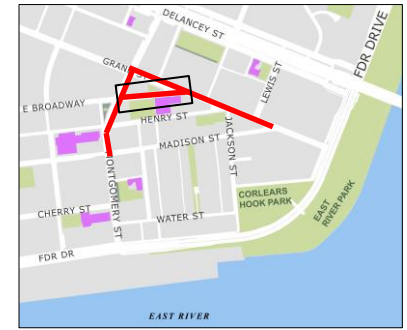
East Broadway (Montgomery St to Grand St)

Proposal: One-Way Conversion to Simplify Intersection



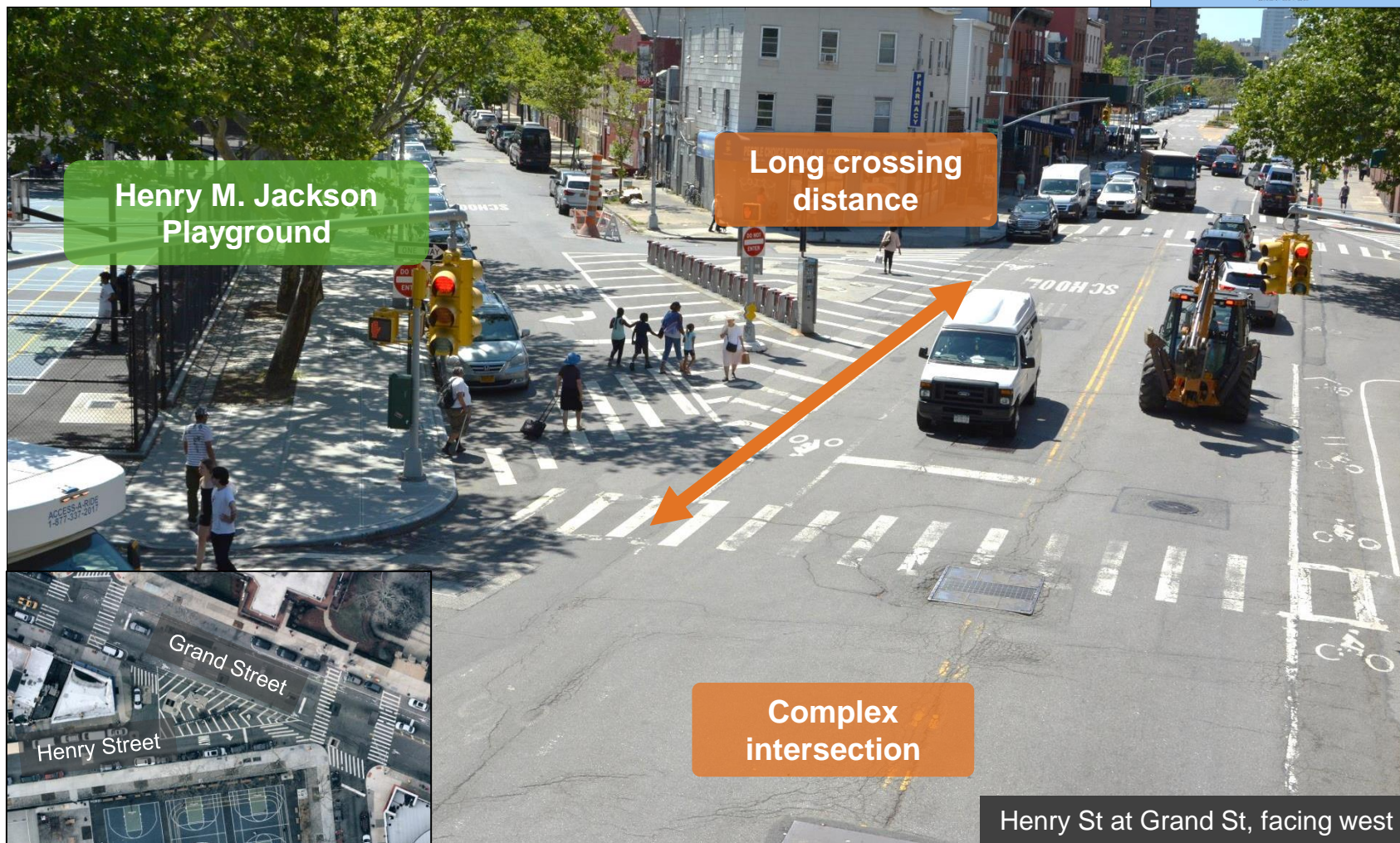
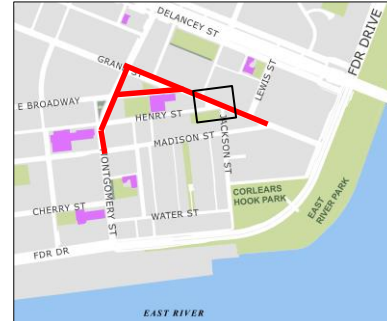
East Broadway (Montgomery St to Grand St)

Proposal: Traffic Calming and One Way Conversion



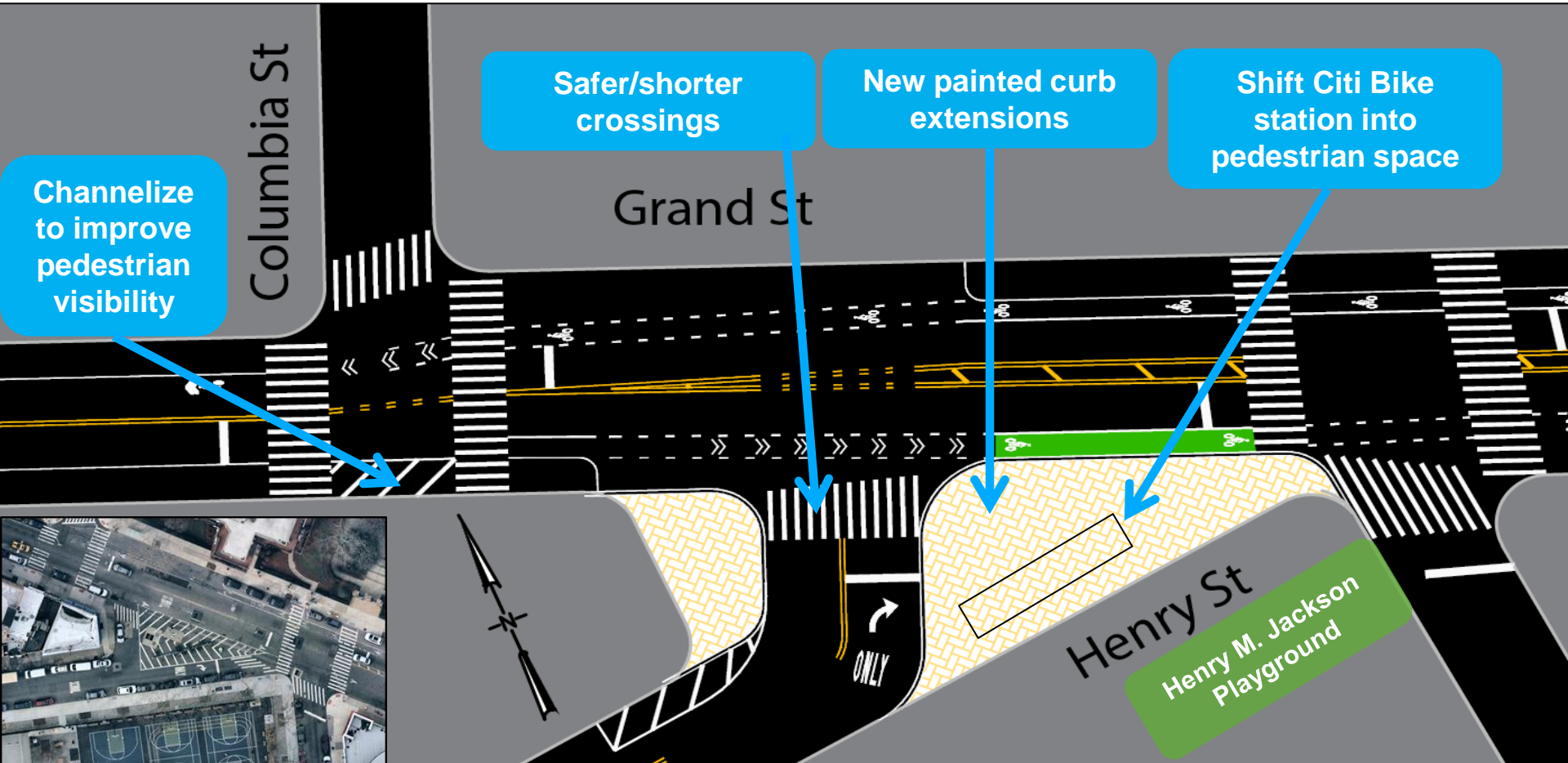
Henry St and Grand St

Existing: Complex Intersection



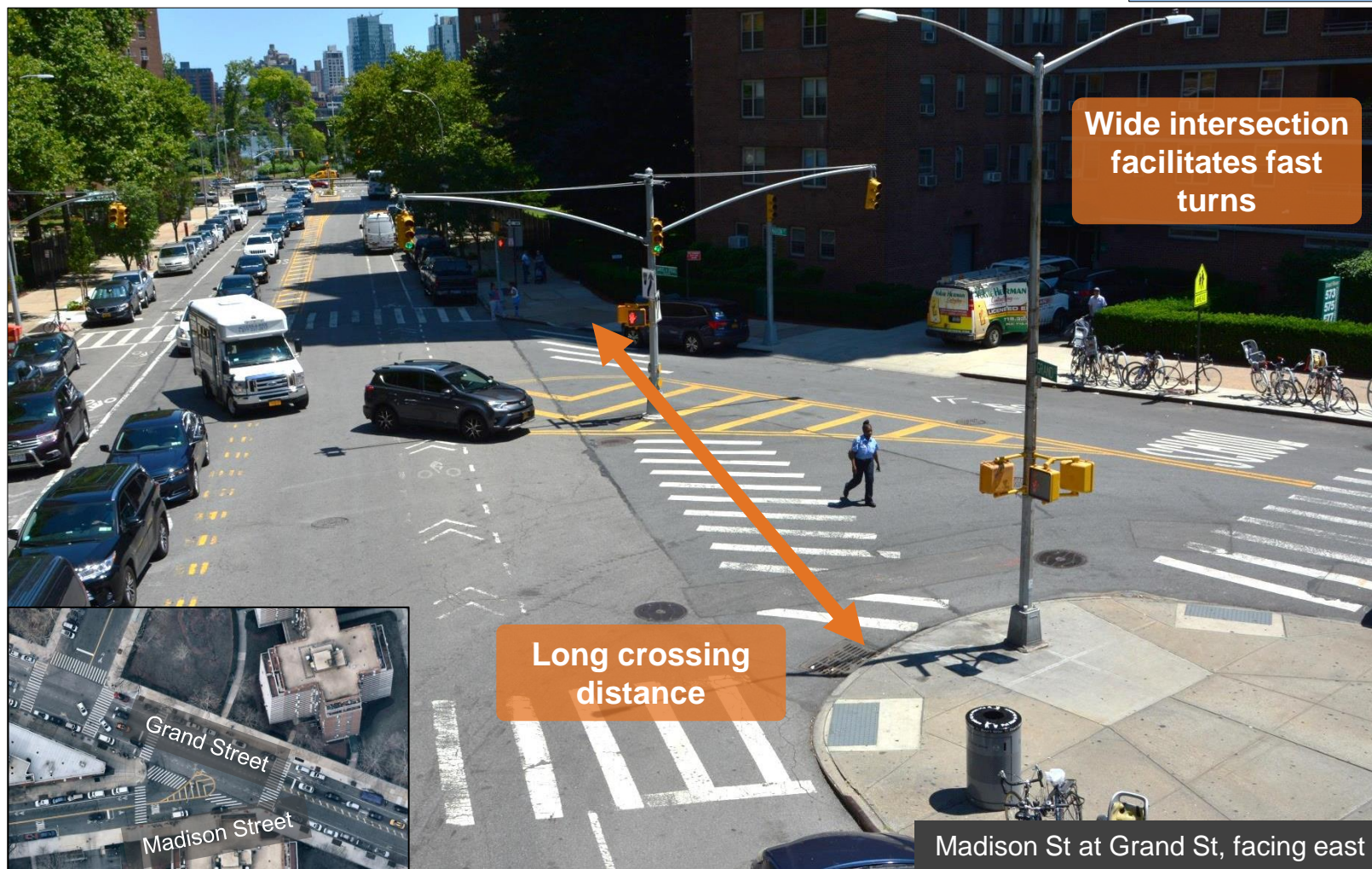
Henry St and Grand St

Proposal: New Curb Extensions



Madison St and Grand St

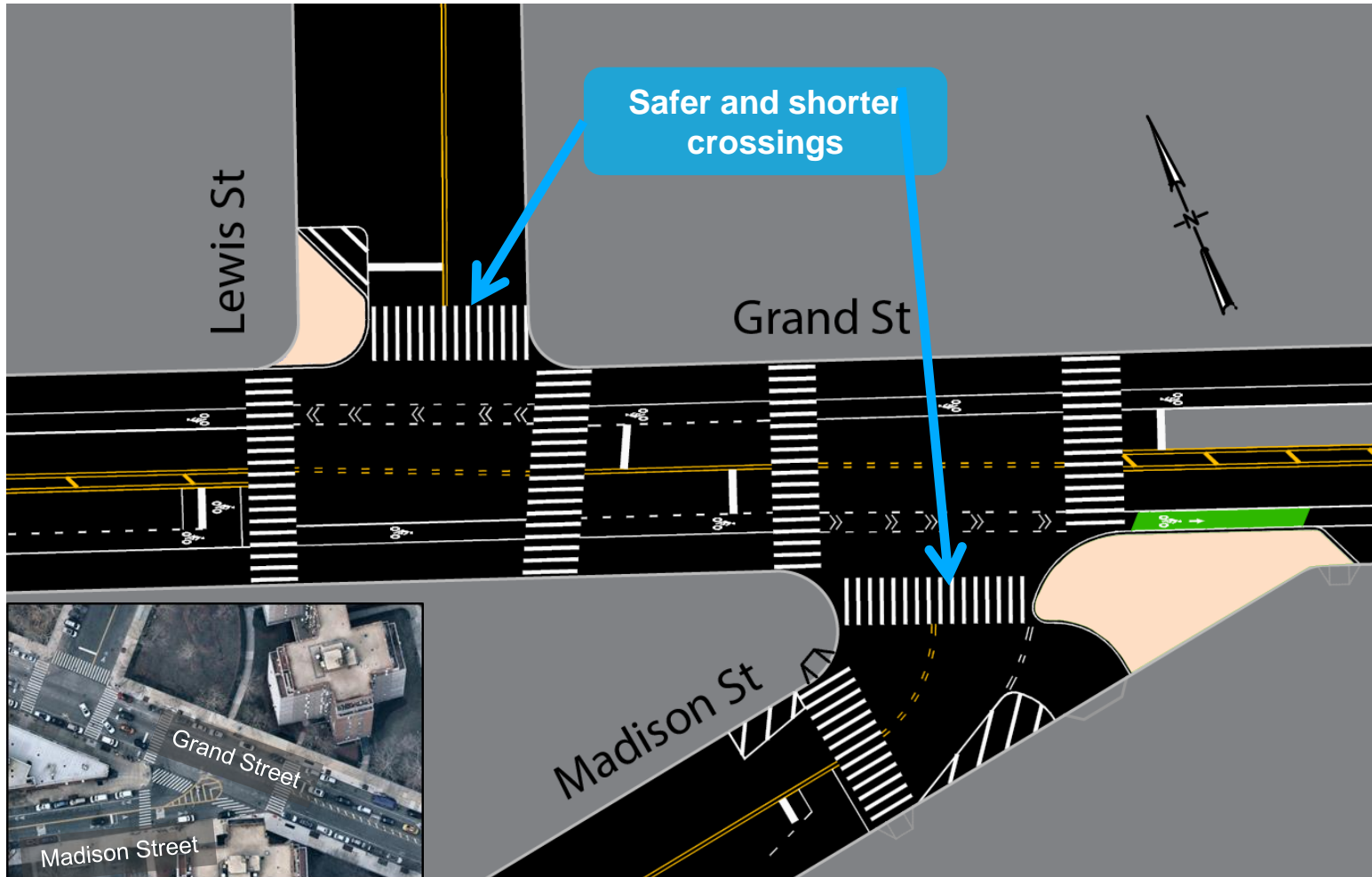
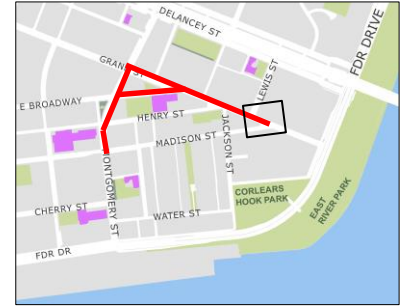
Existing: Complex Intersection



Madison St at Grand St, facing east

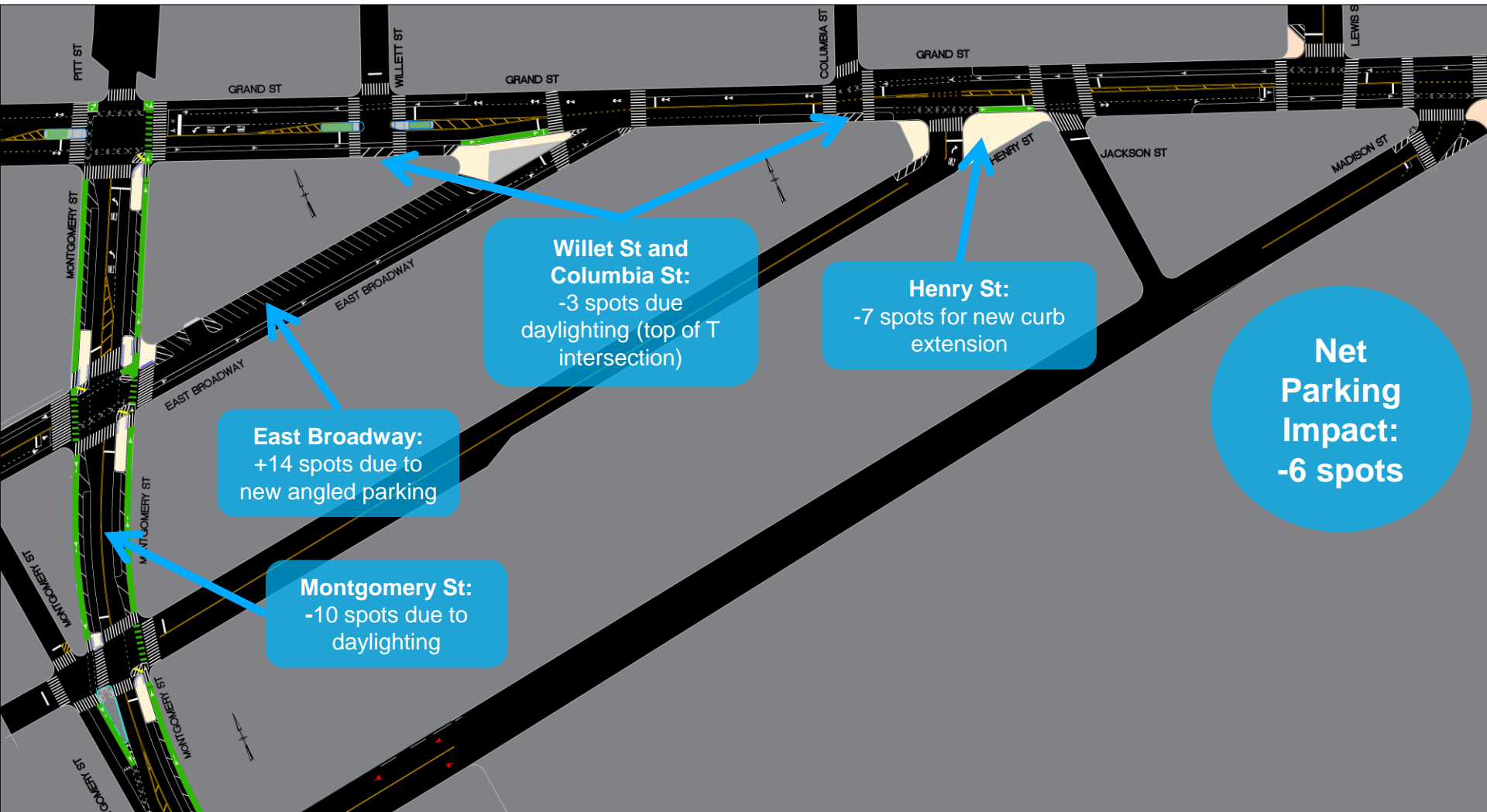
Madison St and Grand St

Proposed: Curb Extensions to Normalize Intersection



LES School Safety Improvements

Proposal: Parking Summary



LES School Safety Improvements

Summary

- Calm Montgomery Street by upgrading existing bike lanes to protected bike lanes
- Improve intersection safety on Montgomery Street by adding painted pedestrian islands and rubber speed bumps to calm turns
- Construct concrete pedestrian refuge island on Montgomery Street and Henry St
- Convert East Broadway to one way east bound and add angle parking
- Normalize irregular intersections on Grand Street at East Broadway, Henry Street and Madison Street



Montgomery Street and East Broadway

Thank you!



Contact: NYCDOT Manhattan Borough Commissioner's Office – (212) 839-6210



NYC DOT



NYC DOT



nyc_dot



NYC DOT