

W 125th St at Lenox, St Nicholas

High Pedestrian Crash Locations

2010



Lenox Ave and W 125th St

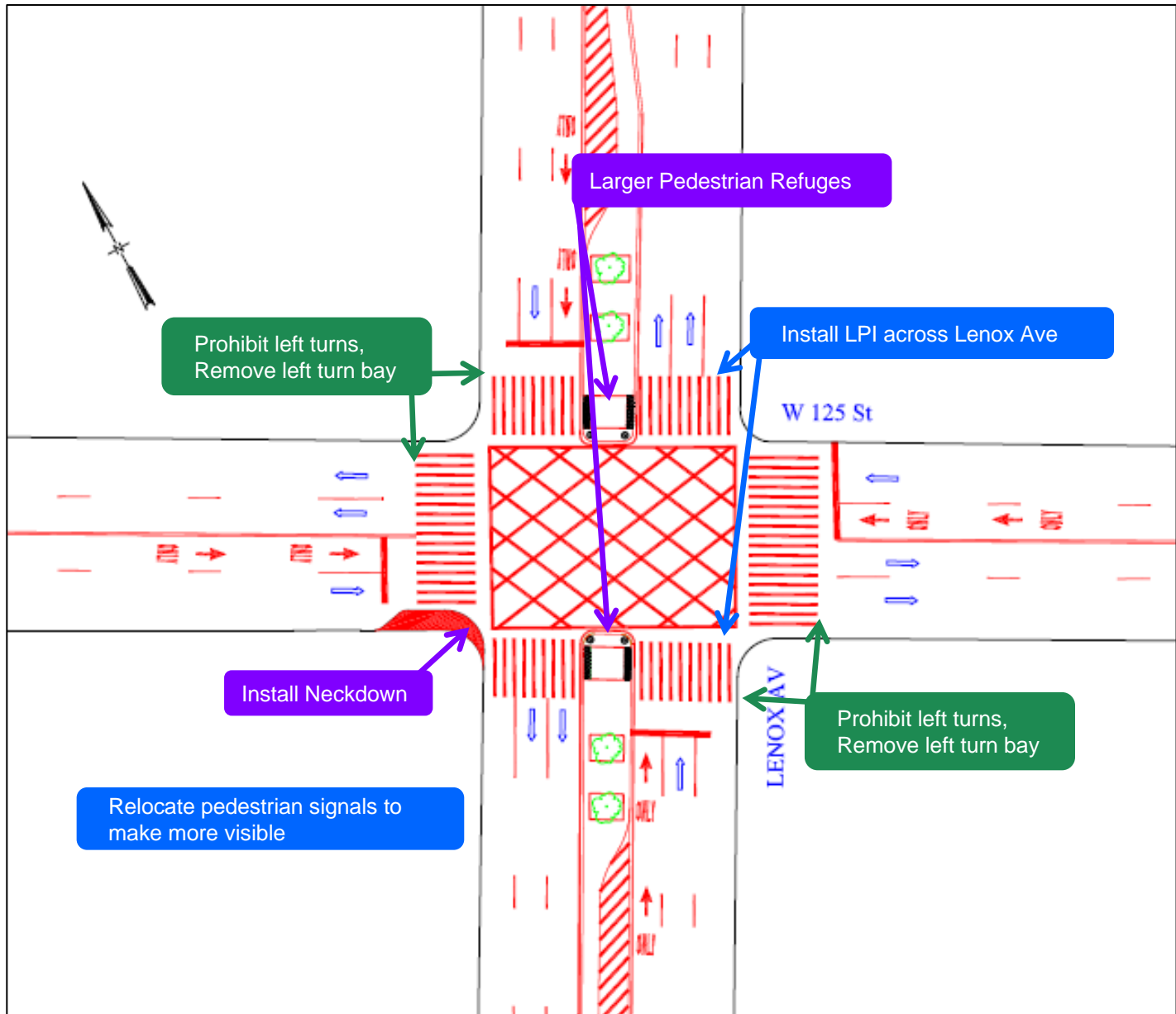
- High Pedestrian Crash Location citywide in 2008
- Busy retail corridor and local truck route
- High pedestrian volumes
- High subway ridership (2/3 stop)
- Some bus stops block visibility of pedestrian signals
- Long crossing distance across Lenox Ave
- Lenox left turns banned 8am-8pm, but there is still a turn bay
- W 125 lefts banned from left thru lane 7-10am, 4-7pm

Lenox Ave at West 125 St

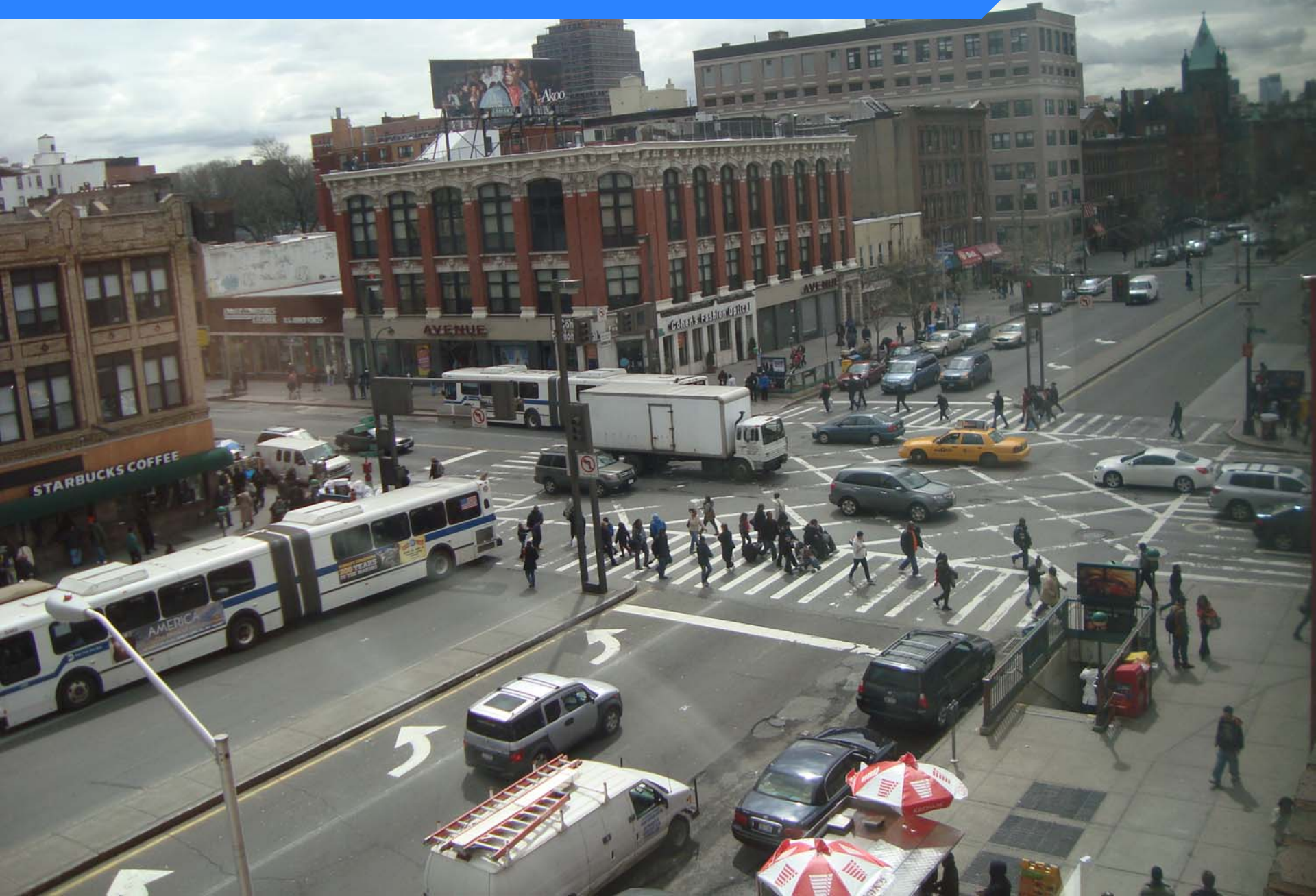
	Total Injuries	Avg Inj/Yr
Pedestrian	21	4.2
Bicyclist	3	0.6
Motor Vehicle Occupant	32	6.4
Total Injuries	56	11.2

Fatalities (2004-2009): 1

Proposal



Existing



Proposed



BENEFITS

- Eliminates conflicts between turning vehicles and pedestrians
- Enhances visibility for pedestrians and vehicles
- Improves vehicular flow
- Reduces crossing distance across Lenox Ave
- Provides safer pedestrian crossings

St. Nicholas Ave and W 125th St

- High Pedestrian Crash Location citywide in 2007
- Busy retail corridor and local truck route
- High pedestrian volumes
- High subway ridership (A/B/C/D stop)
- Rush hour left turn bans
- Faded markings
- Long crossing distances

St Nicholas Ave at West 125 St

	Total Injuries	Avg Inj/Yr
Pedestrian	12	2.4
Bicyclist	2	0.4
Motor Vehicle Occupant	36	7.2
Total Injuries	50	10

Fatalities (2004-2008): None

St. Nicholas Ave and W 125th St

High Pedestrian Crash Location

Existing



Proposed



BENEFITS

- Reduces crossing distance in all crosswalks
- Provides safer pedestrian crossings
- No lost parking spaces

Questions?

Thank
You