



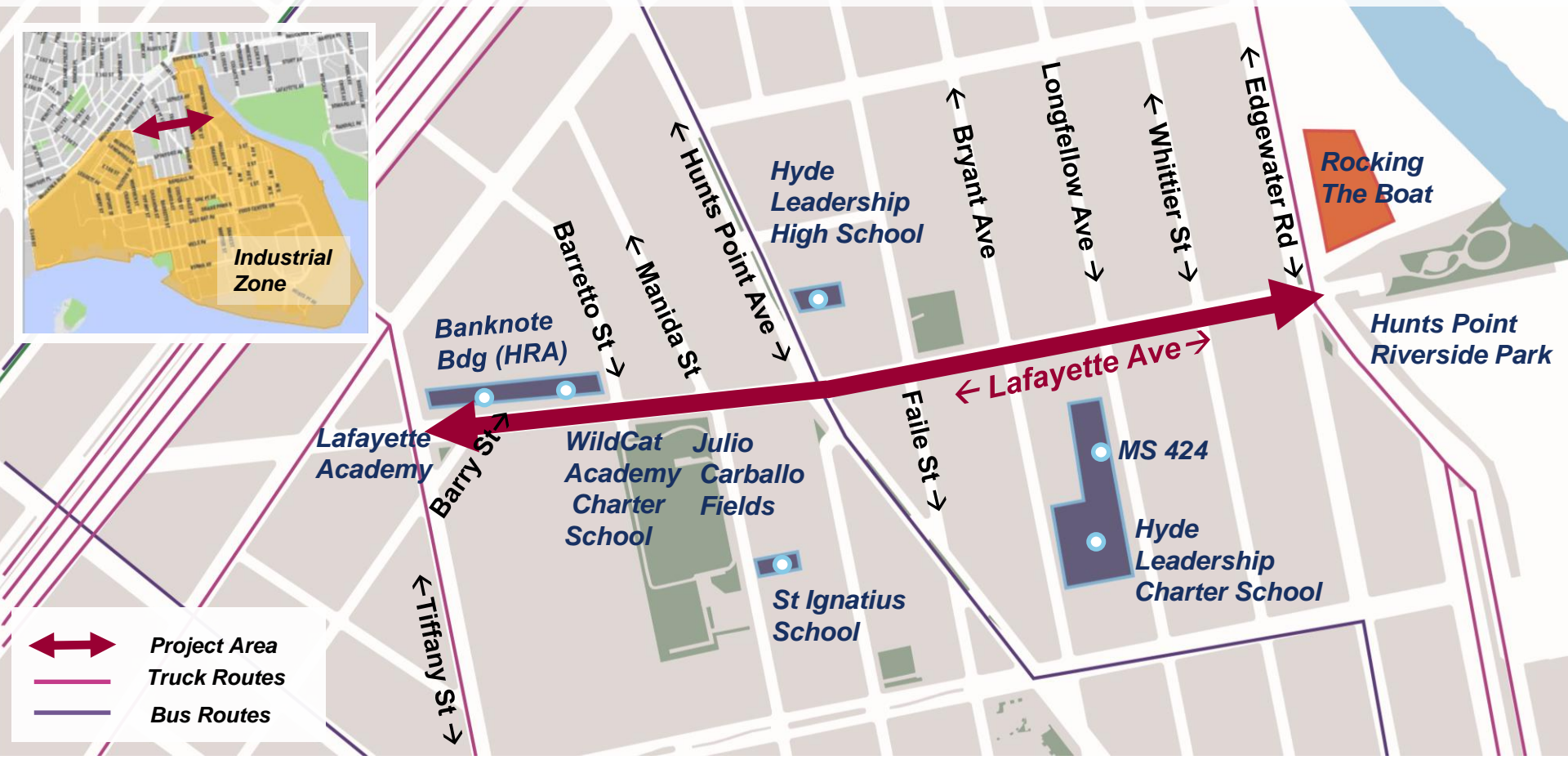
LAFAYETTE AVE: TIFFANY ST TO EDGEWATER RD

School Safety Improvements
Presentation for CB 2 | May 9, 2018

PROJECT BACKGROUND

1

- Community requests for stop controls & pedestrian crossings on Lafayette Ave at Manida St and Barretto St
- Residential area adjacent to Hunts Point Industrial Business Zone
- Multiple schools on Lafayette Ave



Lafayette Ave (Tiffany St – Edgewater St)

Injury and Fatality Summary, 2012 - 2016

1

Fatality

6

Severe Injuries

83

Injuries



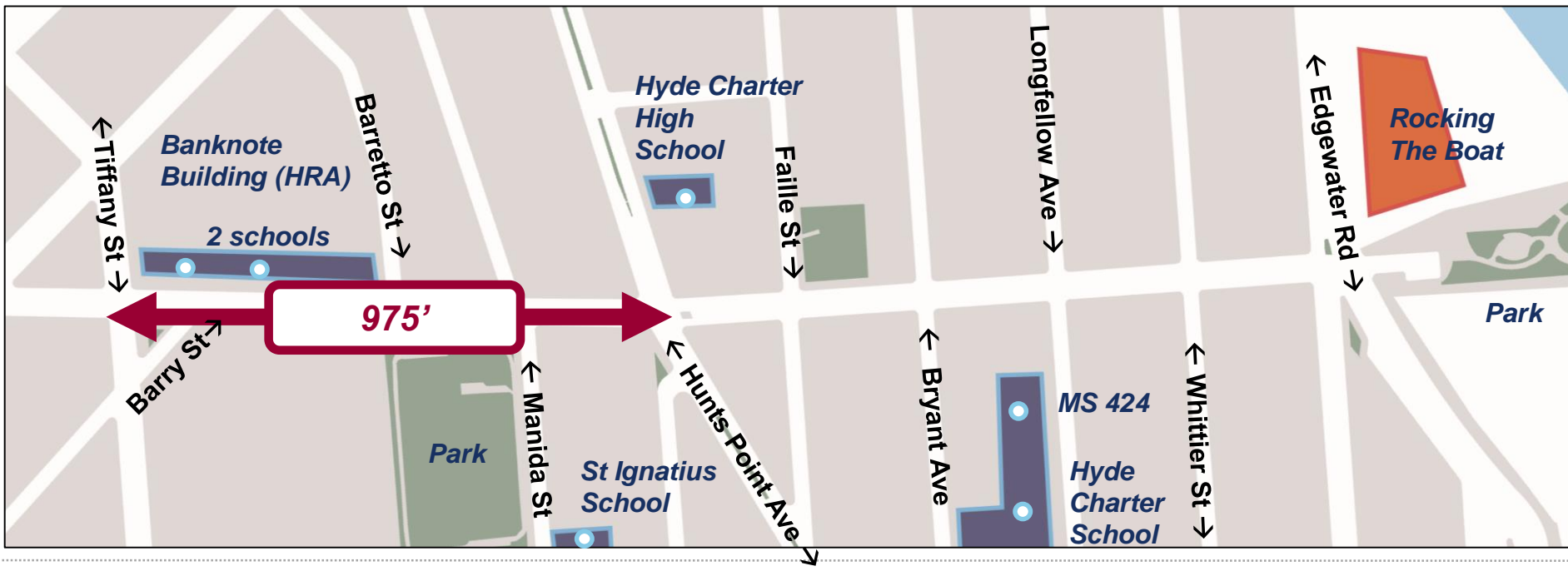
	Total Injuries	Severe Injuries	Fatalities
Pedestrian	19	2	1
Bicyclist	4	1	0
Motor Vehicle Occupant	60	3	0
Total	83	6	1

EXISTING CONDITIONS

2

Existing Conditions

1. Long distances between marked or controlled pedestrian crossings
2. Wide roadway (60 feet)



Lafayette Ave (Tiffany St to Barry St)

Slip lane from the truck route allows for high speed turns

← Tiffany St →

**Banknote Building
(HRA)**

WildCat Academy
Charter
School

Lafayette
Academy

← Lafayette Ave →

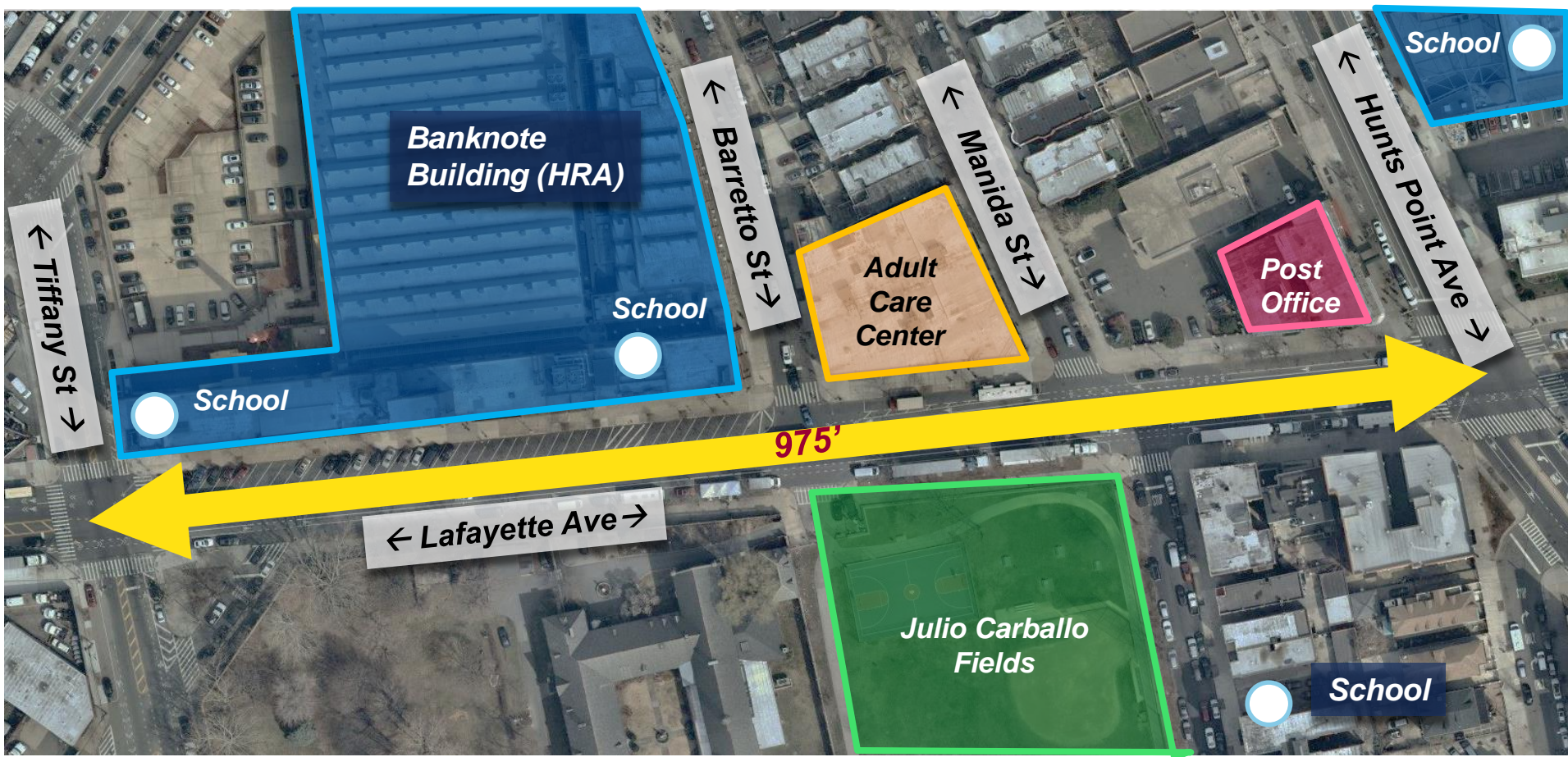
Barry St →

Combination of slip lane and angular parking – poor pedestrian visibility

Lafayette Ave (Tiffany St to Hunts Point Ave)

975' distance between
nearest existing crossings

High pedestrian volumes
around 4 schools



Lafayette Ave (Hunts Point Ave to Longfellow Ave)



60' long crossing
with fast vehicle
turns

← Lafayette Ave →



Missing
crosswalk
on school
block

← Hunts Point Ave →

Longfellow Ave →

MS
424

Hyde
Charter
School

Existing Conditions

Lafayette Ave at Edgewater St



Rocking
The Boat

Park

← Edgewater St →

← Lafayette Ave →

Long two-part crossings

Multiple unpredictable vehicle turning movements

44'

60'

Complicated wide intersection

Setback median allows for fast vehicle turns that conflict with pedestrians

Proposal

3

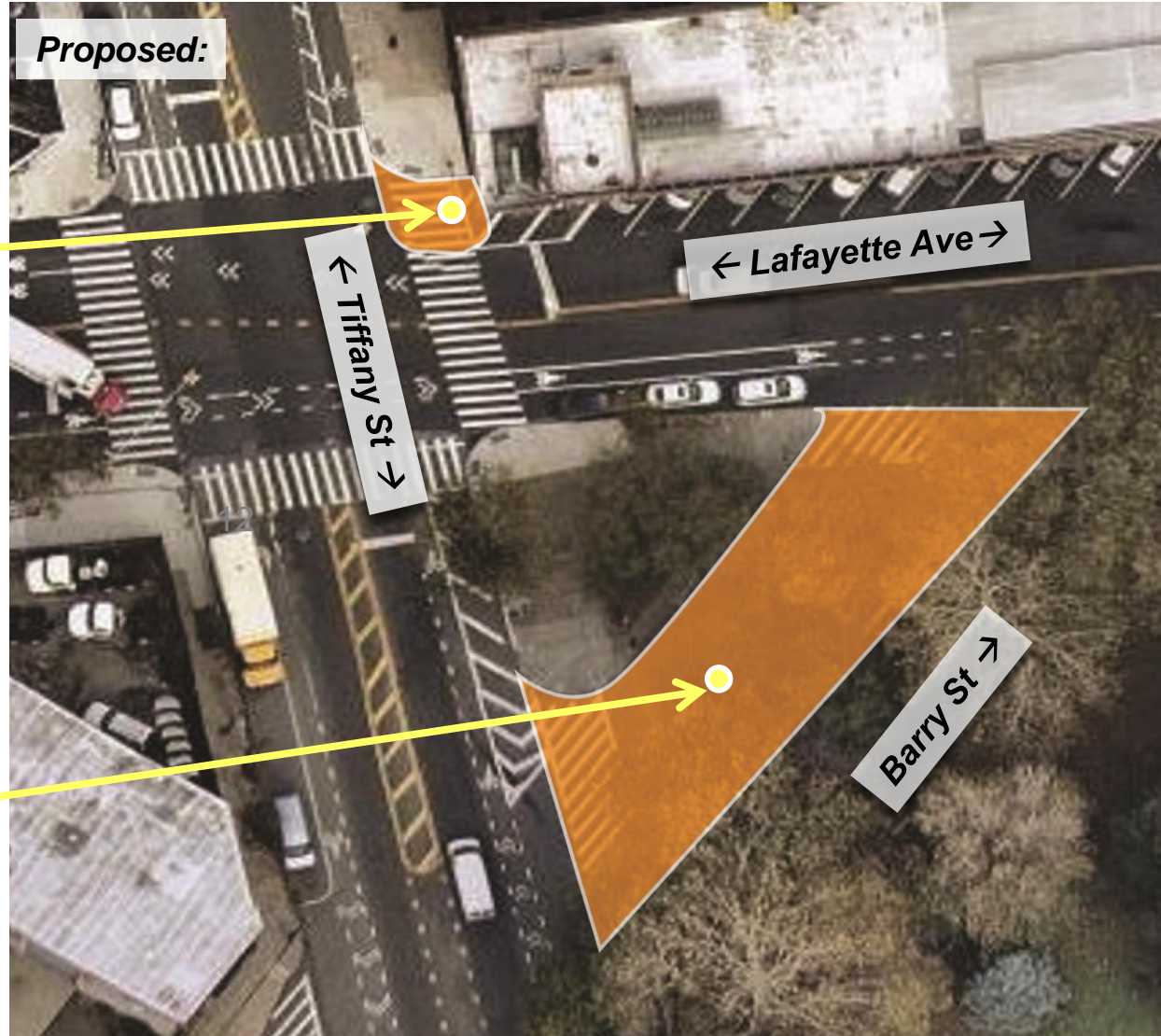
Proposal – Lafayette Ave at Tiffany St & Barry St



Painted Curb Extension



Proposed:

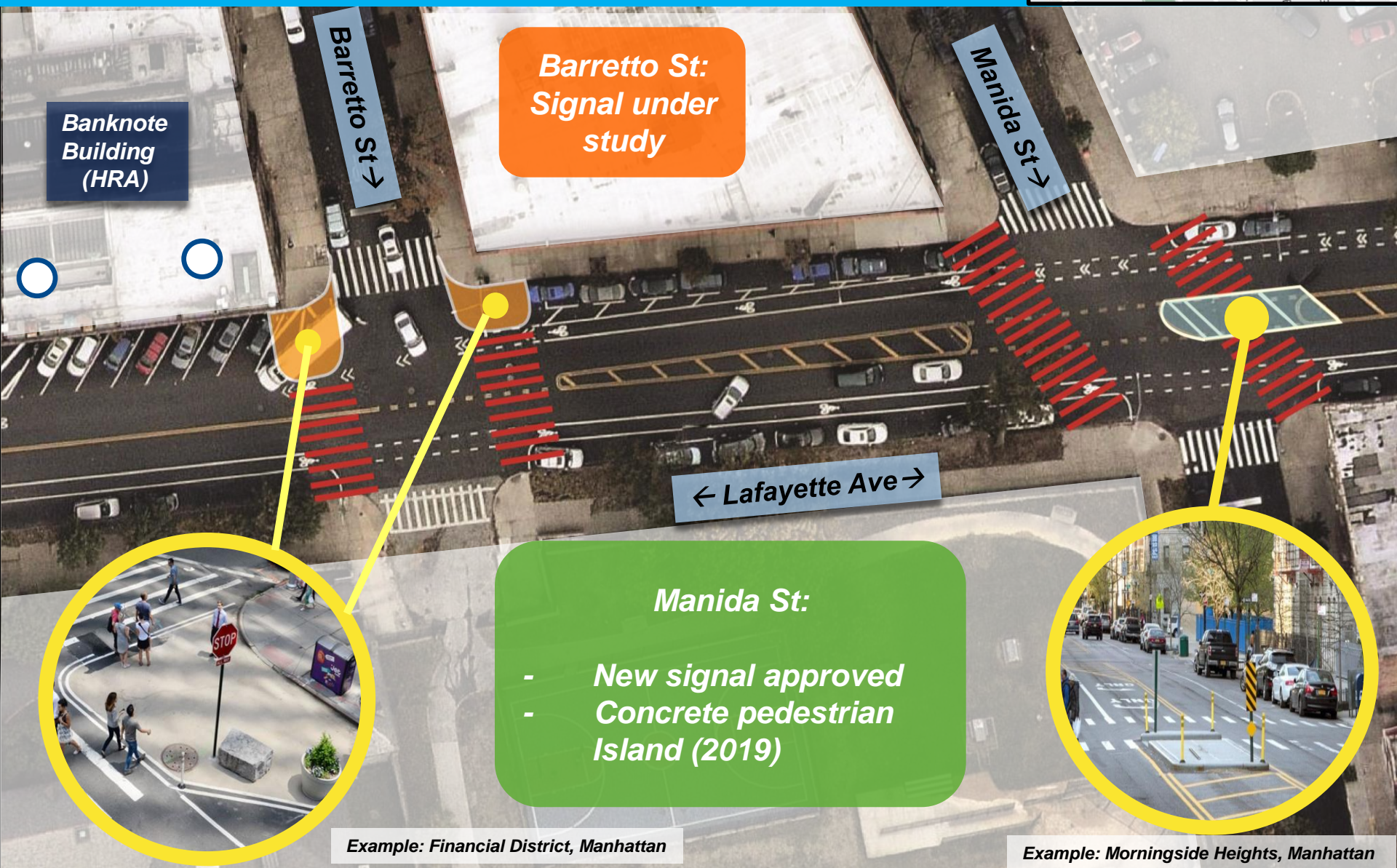


Slip Lane Closure

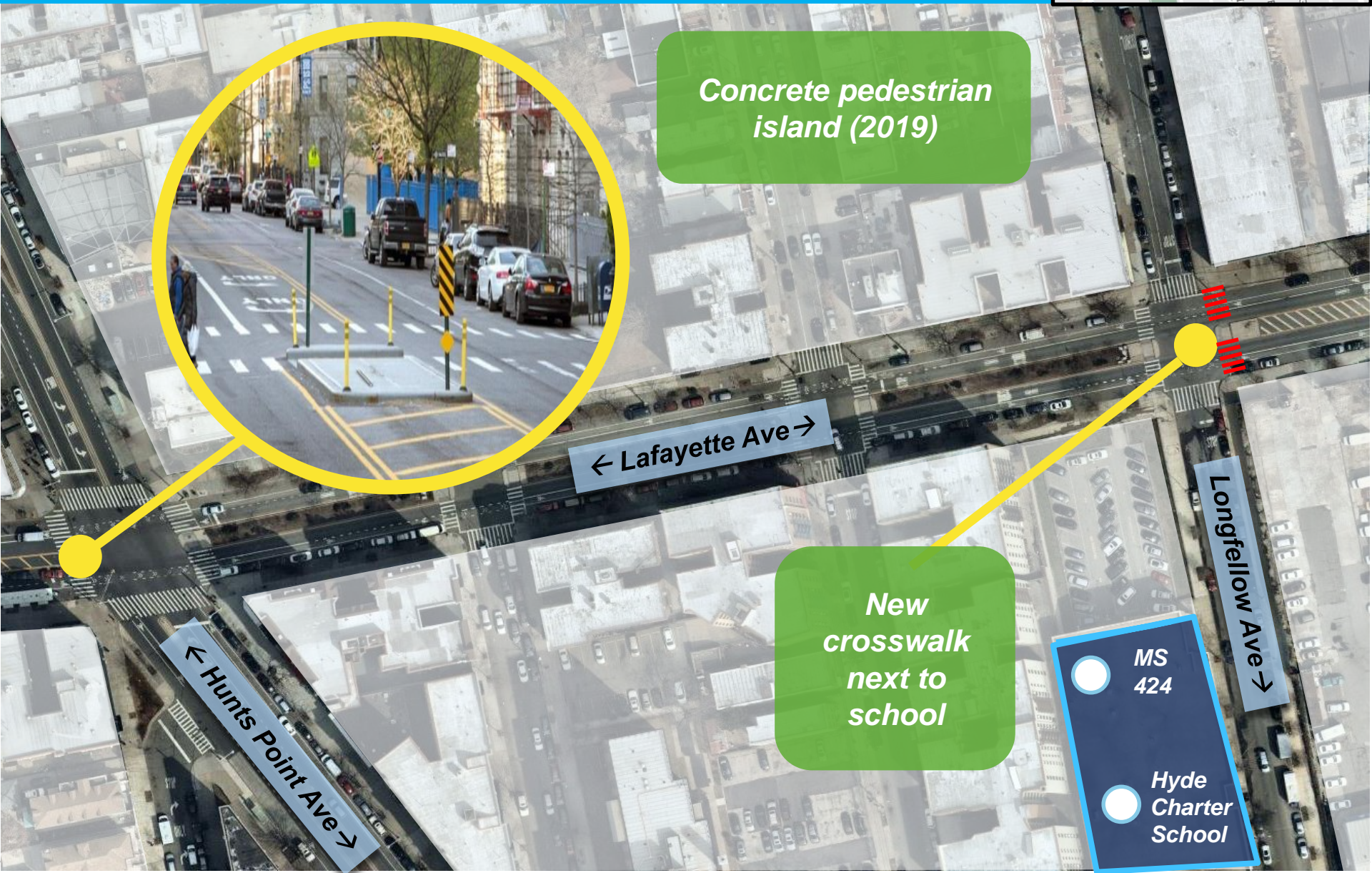


Example: Grand Concourse, Bronx

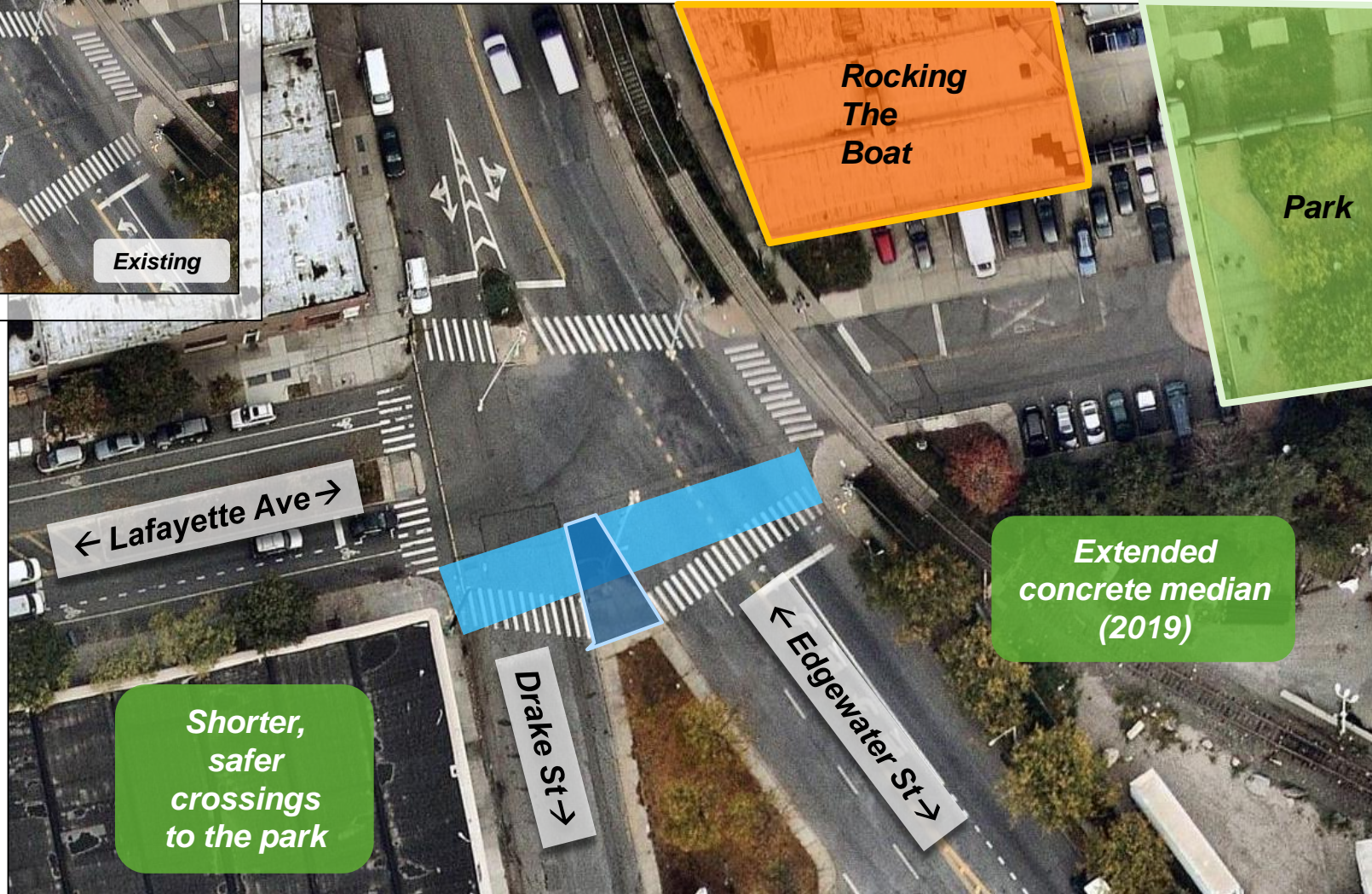
Proposal – Lafayette Ave at Barretto St and Manida St



Proposal – Lafayette Ave at Hunts Point Ave & Longfellow Ave



Proposal – Lafayette Ave at Edgewater St



Painted Curb Extensions and Pedestrian Spaces

Painted pedestrian space proposed at:

- 1) **Lafayette Ave and Tiffany St**
- 2) **Lafayette Ave and Barretto St**
- 3) **Barry St, Tiffany St to Lafayette Ave**



Example: painted pedestrian space without a community partner



Example: painted pedestrian space with a community partner

Painted pedestrian space can be accessed by DSNY vehicles for sweeping and shoveling

Community partner responsible for sweeping, shoveling, weeding/planting

Proposal – SUMMARY

Painted Curb Extensions

Concrete Pedestrian Islands

Redesigned Crossing & Extended Concrete Median

Banknote building:
HRA/Two schools

Barretto St →

← Manida St

School

← Hunts Point Ave →

← Lafayette Ave →

Faile St →

← Bryant Ave

Two schools

Longfellow Ave →

← Whittier St →

Rocking
The
Boat

← Edgewater Rd →

← Tiffany St →

Barry St →

Park

School

Closed Slip Lane

New Signalized Crossings:

(Manida St approved; Barretto St under study)

Add Missing Crosswalk



NYC DOT



NYC DOT



nyc_dot



NYC DOT