

An aerial photograph of a city intersection. A white bus with the number 3386 and an advertisement for 'STILL IN NEW YORK' is on the left. Several cars are in the intersection, including a white sedan, a dark SUV, and a red car. Pedestrians are crossing the street. Traffic lights and various street signs are visible at the intersection.

KAPPOCK STREET

Presentation to Bronx CB 8 Transportation Committee

May 17, 2016

PROJECT AREA

KAPPOCK STREET

- Mostly residential area with some retail stores
- Nearby school and senior center
- Bx10, Bx20, BxM1, BxM2 and BxM18 buses
- Exits and entrances to Henry Hudson Pkwy



BACKGROUND

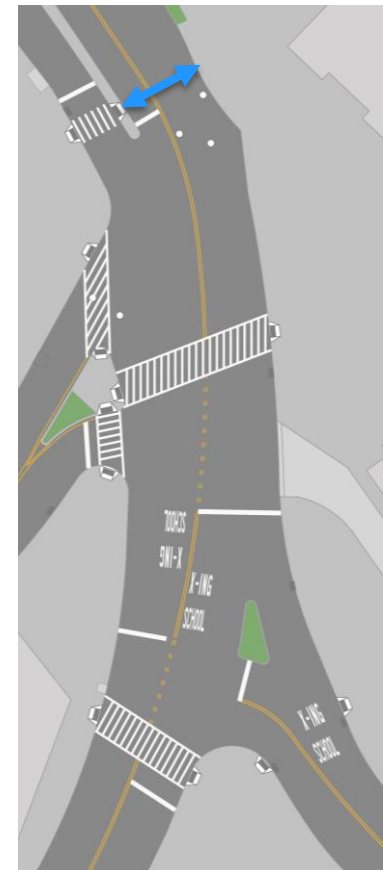
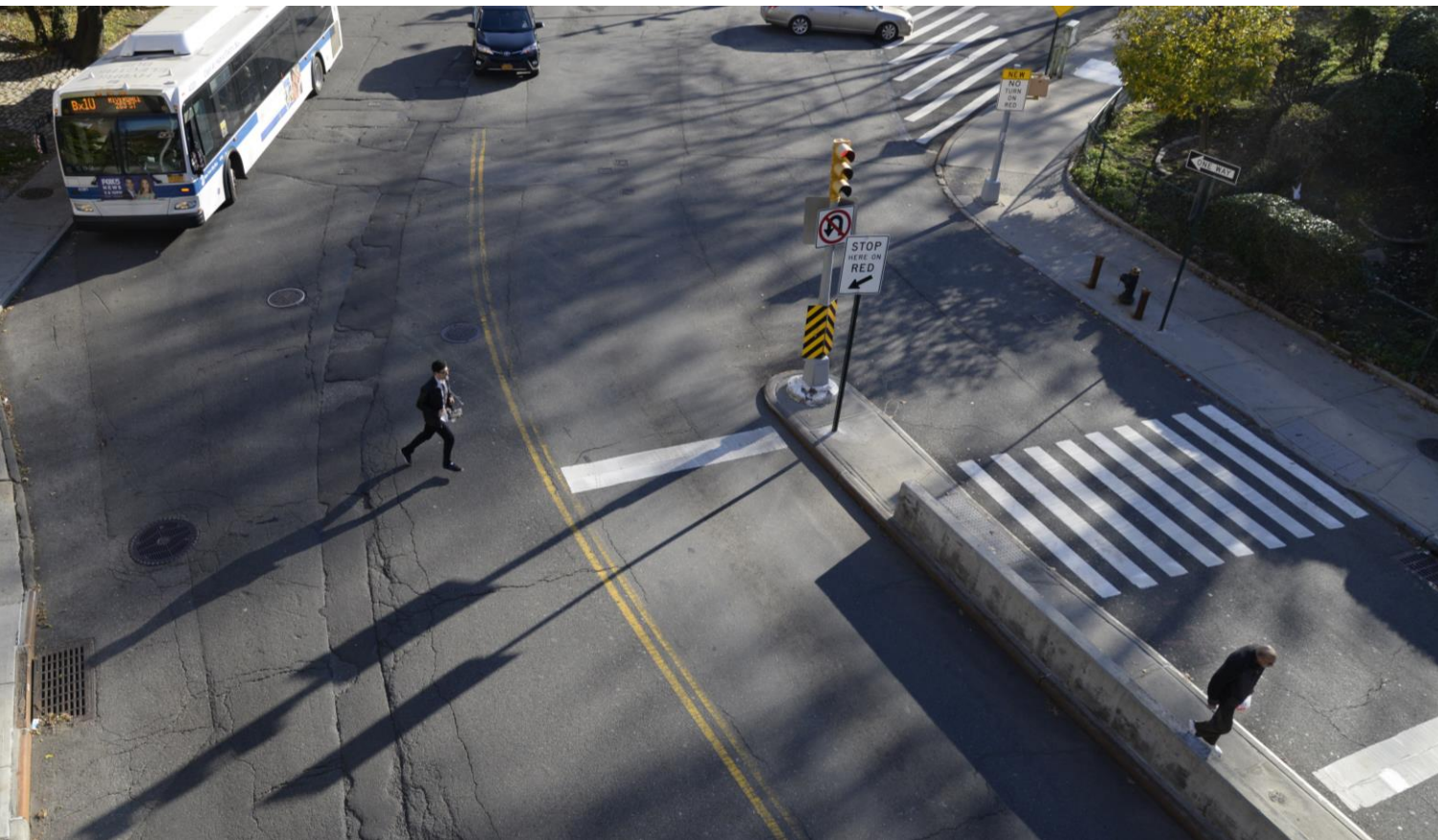
KAPPOCK STREET

- Irregular, wide, two-part intersection
- Request from CM Cohen to clarify intersection for pedestrians
- Requests from community, Riverdale Senior Center members and students of the Kinneret Day School for marked crosswalks



EXISTING CONDITIONS

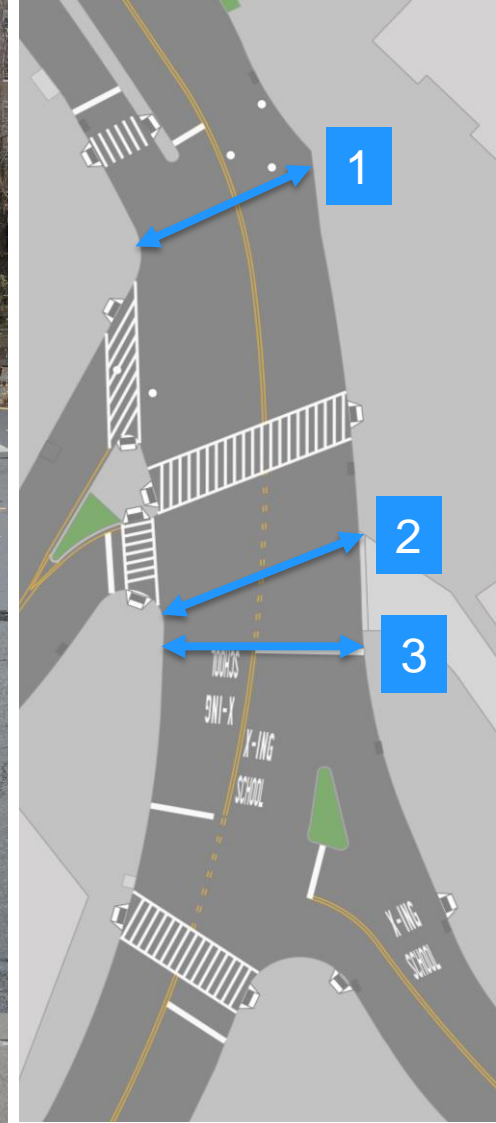
Crosswalk only marked on west side of intersection



Kappock St at Henry Hudson Pkwy Exit, Looking South

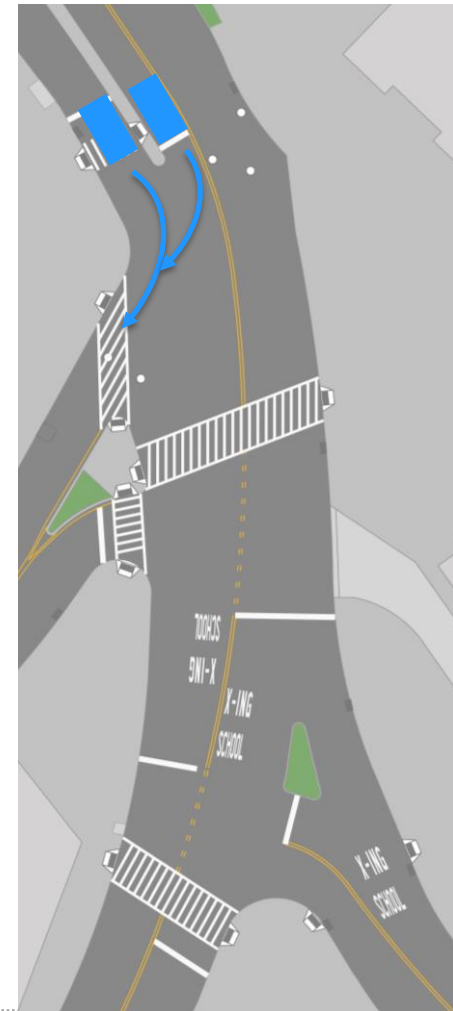
EXISTING CONDITIONS

Existing crosswalks do not match pedestrian desire lines



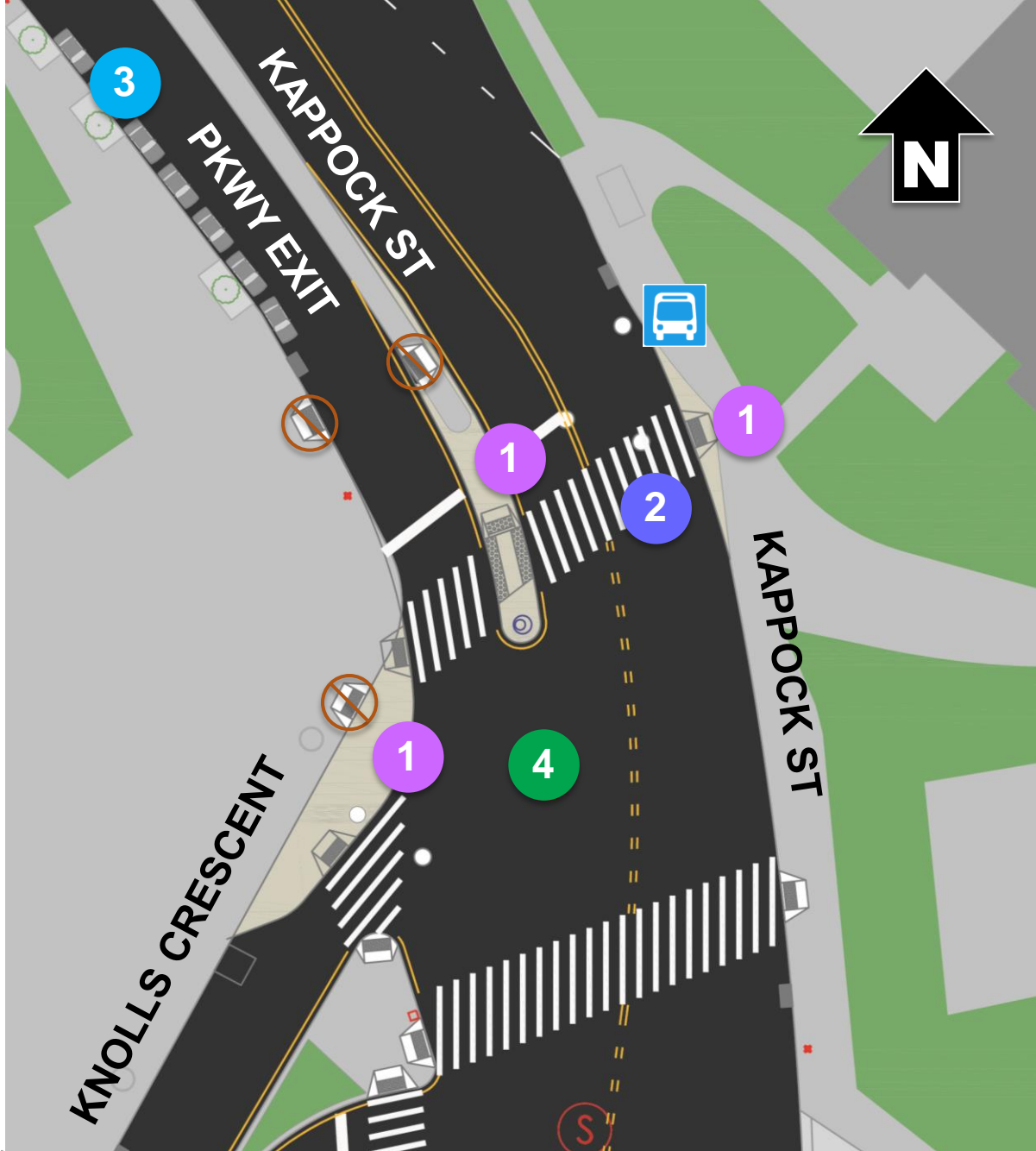
EXISTING CONDITIONS

Conflicts between vehicles turning rights onto Knolls Crescent from Henry Hudson Pkwy exit and Kappock St



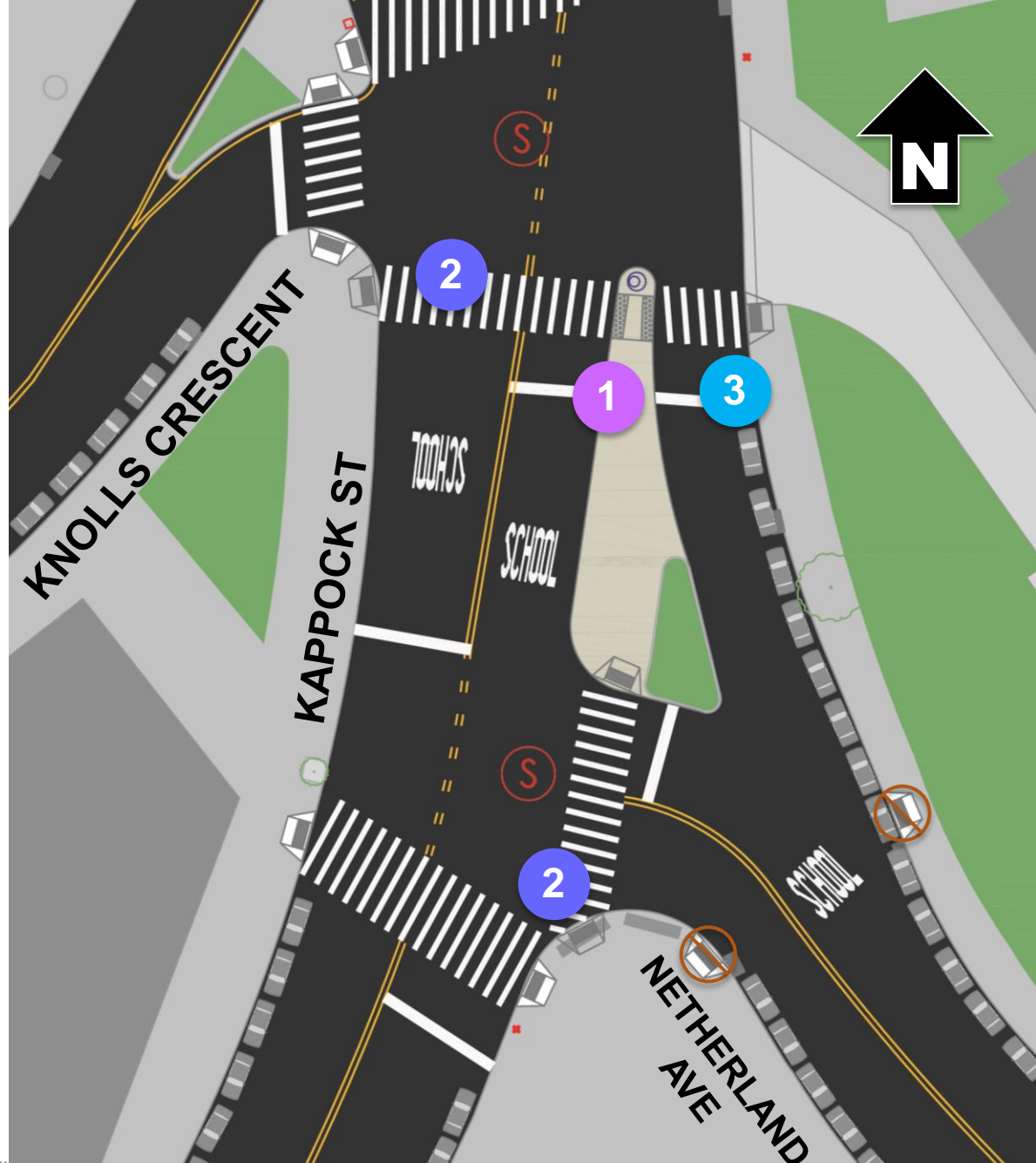
PROPOSAL

1. Concrete curb extensions
2. Mark missing leg of crossing and move crossing south to meet pedestrian desire line
3. Add 70 ft. of new parking
4. Separate movements with new signal phasing



PROPOSAL

1. New concrete pedestrian space
2. Mark new crosswalks
3. Remove one parking spot



BENEFITS

- Tightens intersection
- Marks new crosswalks
- Shortens pedestrian crossing distances
- Adds new pedestrian space
- Reduces vehicle turning conflicts
- Adds parking





SUMMARY

- Extend concrete median between Henry Hudson Pkwy exit and Kappock St
- Build-out curb adjacent to bus stop near Henry Hudson Pkwy entrance
- Separate southbound vehicle movements from Kappock St and Henry Hudson Pkwy exit with new signal phasing
- Concrete curb extension at Knolls Crescent and Kappock St
- Expand existing Greenstreets triangle at Kappock St and Netherland Ave to create new concrete pedestrian space
- Add 70' of new parking at Henry Hudson Pkwy exit
- Mark eastside of crosswalk on Kappock at Knolls Crescent
- Mark new crosswalk on Kappock St just south of Knolls Crescent
- Mark new crosswalk on Netherland Ave at Kappock St

THANK YOU!

Questions?



NYC DOT



NYC DOT



nyc_dot



NYC DOT