



Jerome Ave (W 192nd St and E 205th St)

Bus Stop Improvements

Bronx Community Board 7

Spring 2024



Bus Stops Under the El

- Federally-funded program to improve safety at bus stops located under elevated subway lines
- Addresses unsafe waiting conditions, non-ADA compliant bus stops, and intersection safety
- Construction of bus boarding islands or curb extensions improves bus service and safety
- Improves bus operations and better organizes traffic and creates more predictability for vehicles, pedestrians, and transit riders



Above: Bus riders wait in the street at White Plains Rd and E 215th St in the Bronx
Below: Bus riders safely board at a newly constructed concrete island at White Plains Rd and E 215th St in the Bronx

Project Location

Jerome Ave

- Intersections: W 192nd St and E 205th St
- Commercial and residential land use
- Subway Stations located at Fordham Rd, Kingsbridge Rd, Bedford Park Blvd that service the 4, B, and D trains; Bx32 and Bx10 buses
- Existing Westchester Bee-Line 4, 20, and 21 routes also along the corridor



Jerome Ave, W 192nd St and W 205th St

Bus Stops Under the EI Issues

Bus stops located in roadway



Poor visibility of bus riders



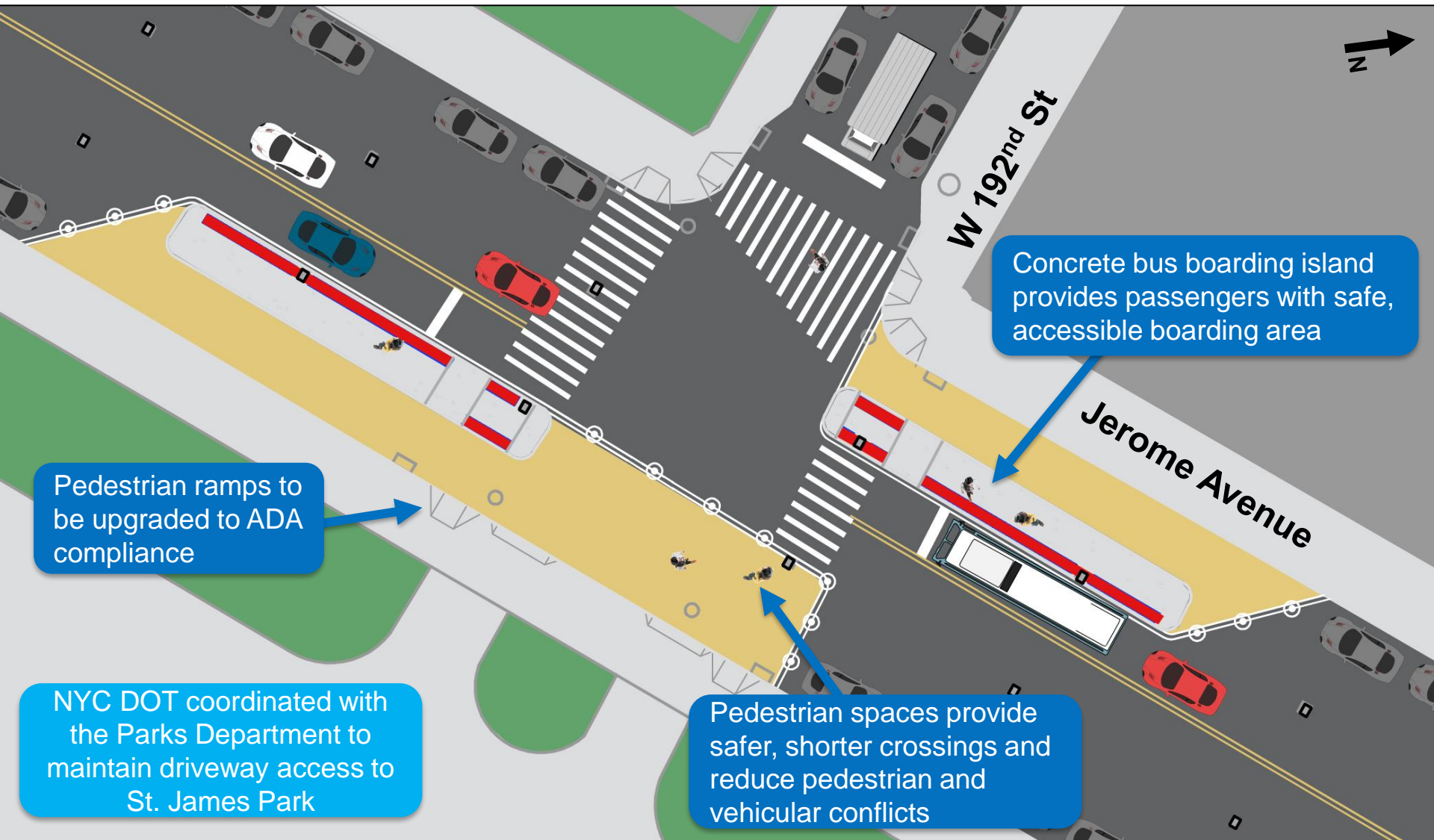
Accessibility issues for bus riders



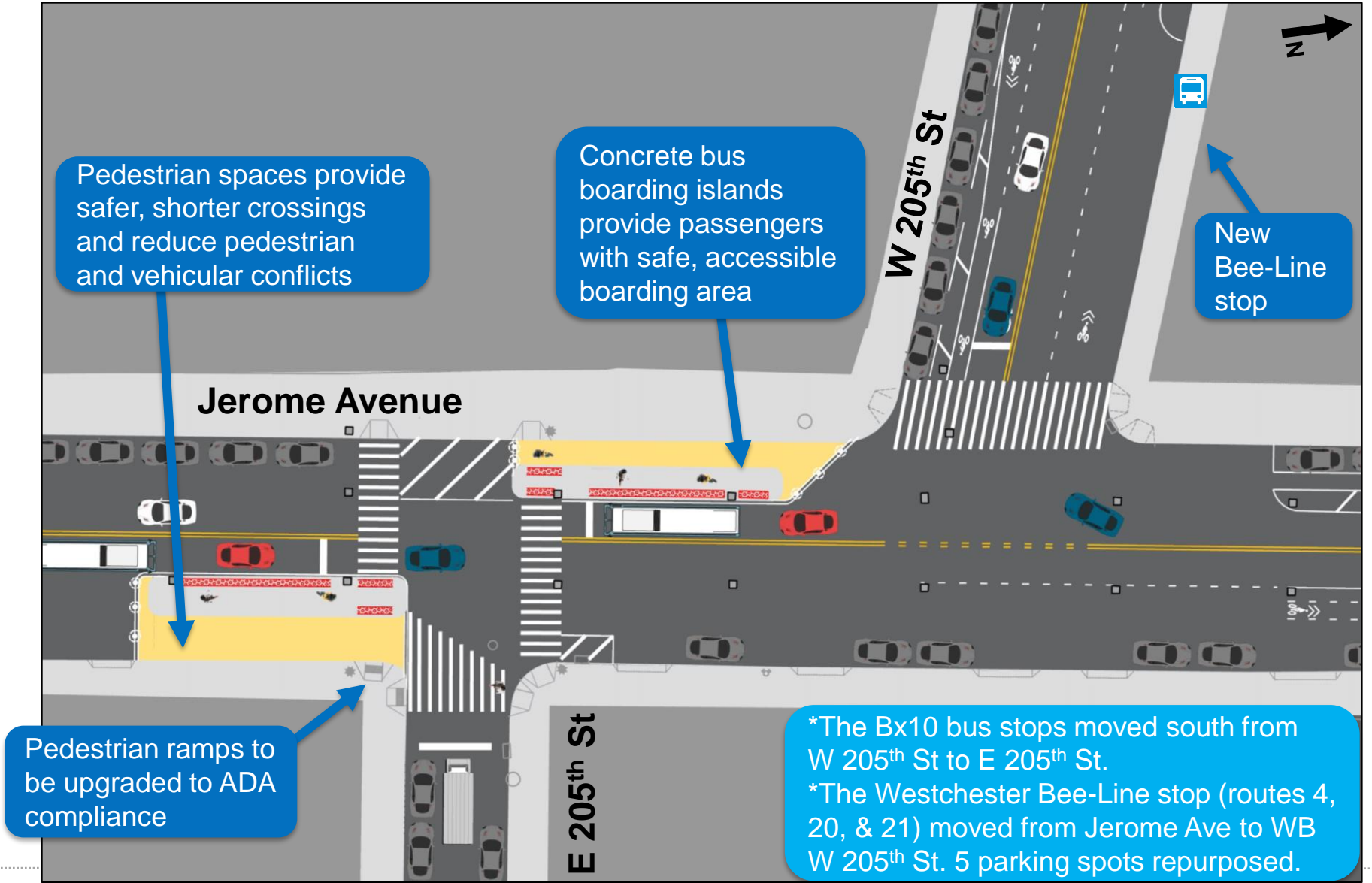
Vehicle and bus rider conflicts



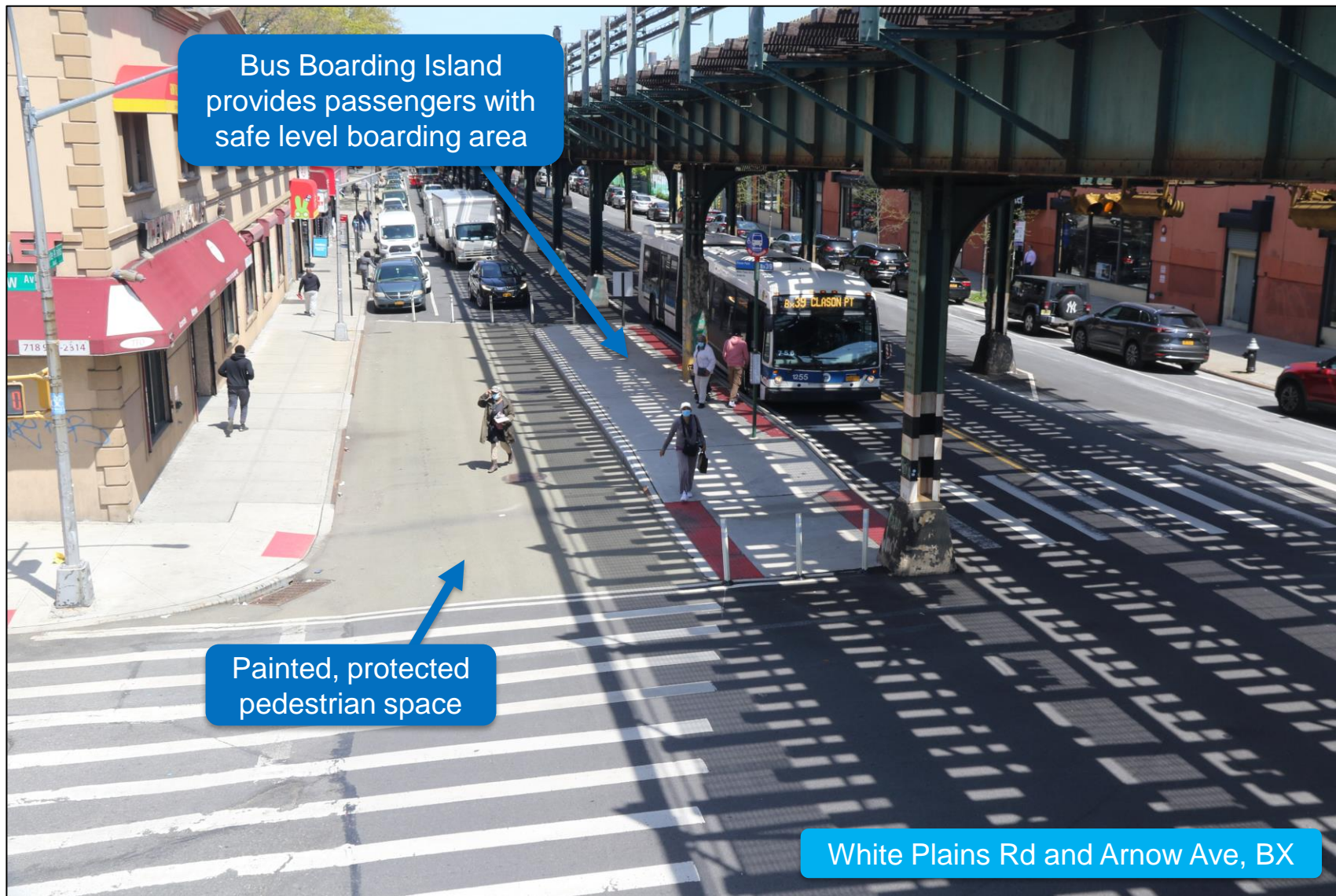
Proposed Conditions: W 192nd St



Proposed Conditions: E 205th St



Example of Proposed Conditions



Project Benefits

- Bus boarding islands at W 192nd St and E 205th St improve ADA accessibility and safety for riders
- Better organizes traffic and creates more predictability for vehicles, pedestrians and transit riders
- Shorter, safer crossings for pedestrians and improved pedestrian refuge space
- Improves bus operations



Similar Configuration: Westchester Ave, BX

Thank You!



NYCDOT



nyc_dot



nyc_dot



NYCDOT