



# JEROME AVENUE AND CROSS BRONX EXPRESSWAY

School Safety Improvements  
Community Board 5    March 8, 2017





# VISION ZERO PRIORITY

## Bronx Priority Geographies

### Vision Zero

- Multi-agency effort to reduce traffic fatalities in NYC
- Borough Action Plans released in 2015
- Priority Intersections, Corridors, and Areas identified for each borough

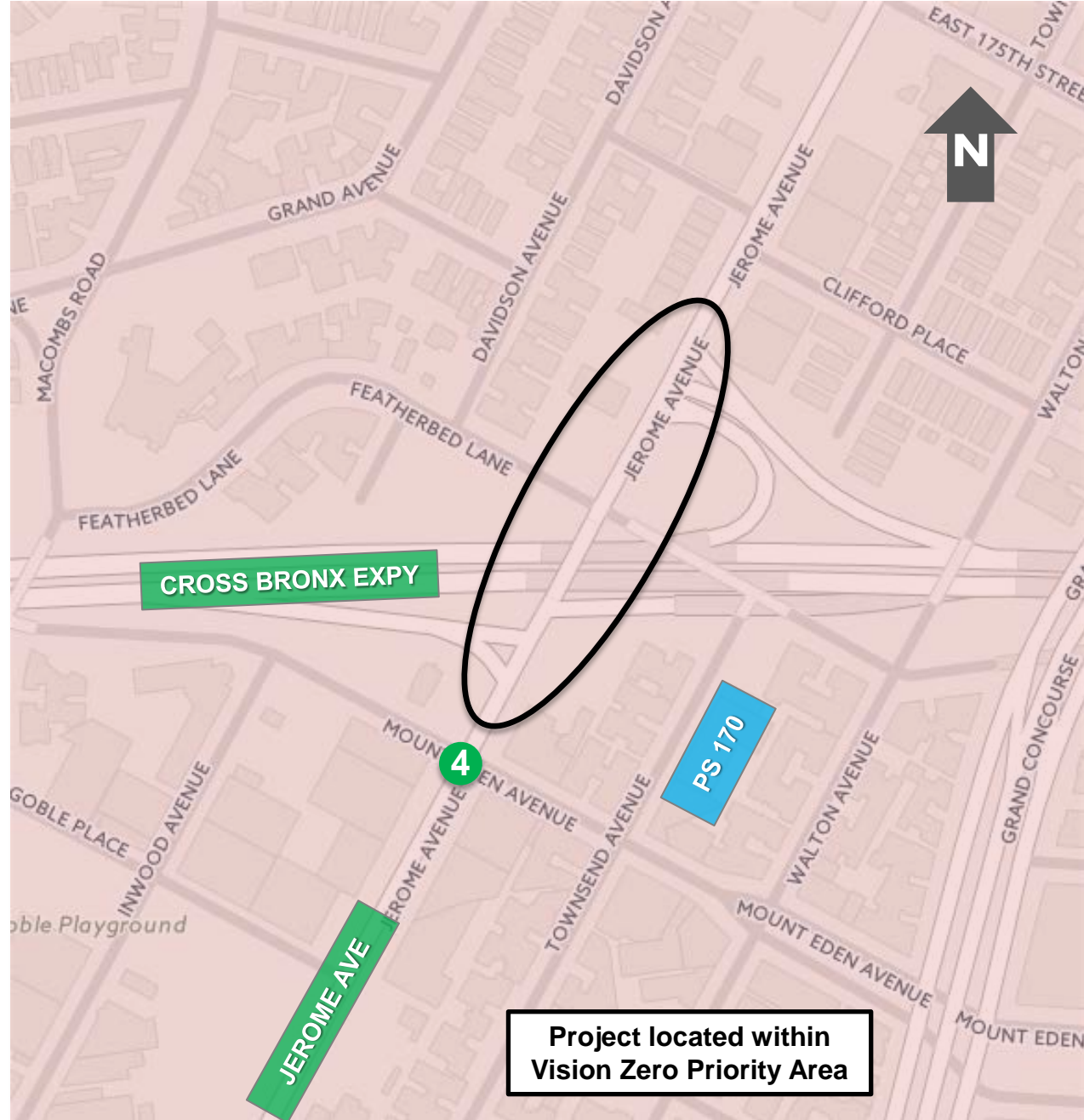
### Jerome Ave

- Inside Priority Area



# PROJECT LOCATION

- Jerome Ave at the Cross Bronx Expressway
- Inside Vision Zero Priority Area
- Project area used by students accessing PS 170
- 4 train stop on Jerome at Mt Eden Ave; nearby B and D trains, BX1, BX2 on Grand Concourse

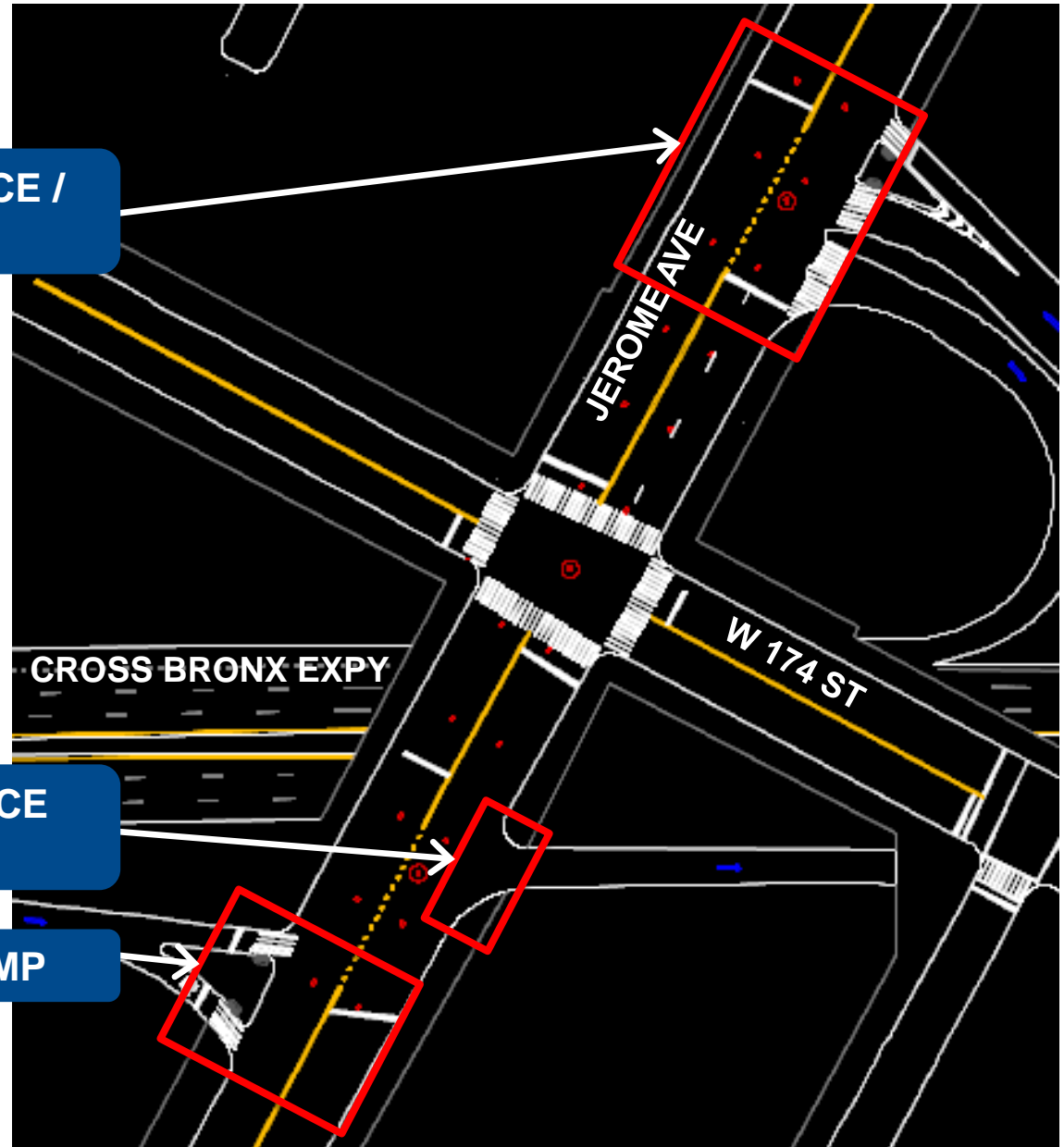


# FOCUS AREAS

1. WESTBOUND ENTRANCE /  
EXIT RAMP

2. EASTBOUND ENTRANCE  
RAMP

3. EASTBOUND EXIT RAMP





# EXISTING CONDITIONS: JEROME AVE AND CROSS BRONX EXPY WESTBOUND ENTRANCE / EXIT



**INADEQUATE PEDESTRIAN  
REFUGE SPACE**

*Jerome Ave at the Cross Bronx Expy westbound entrance ramp, facing north*



# PROPOSAL: JEROME AVE AND CROSS BRONX EXPY WESTBOUND ENTRANCE / EXIT

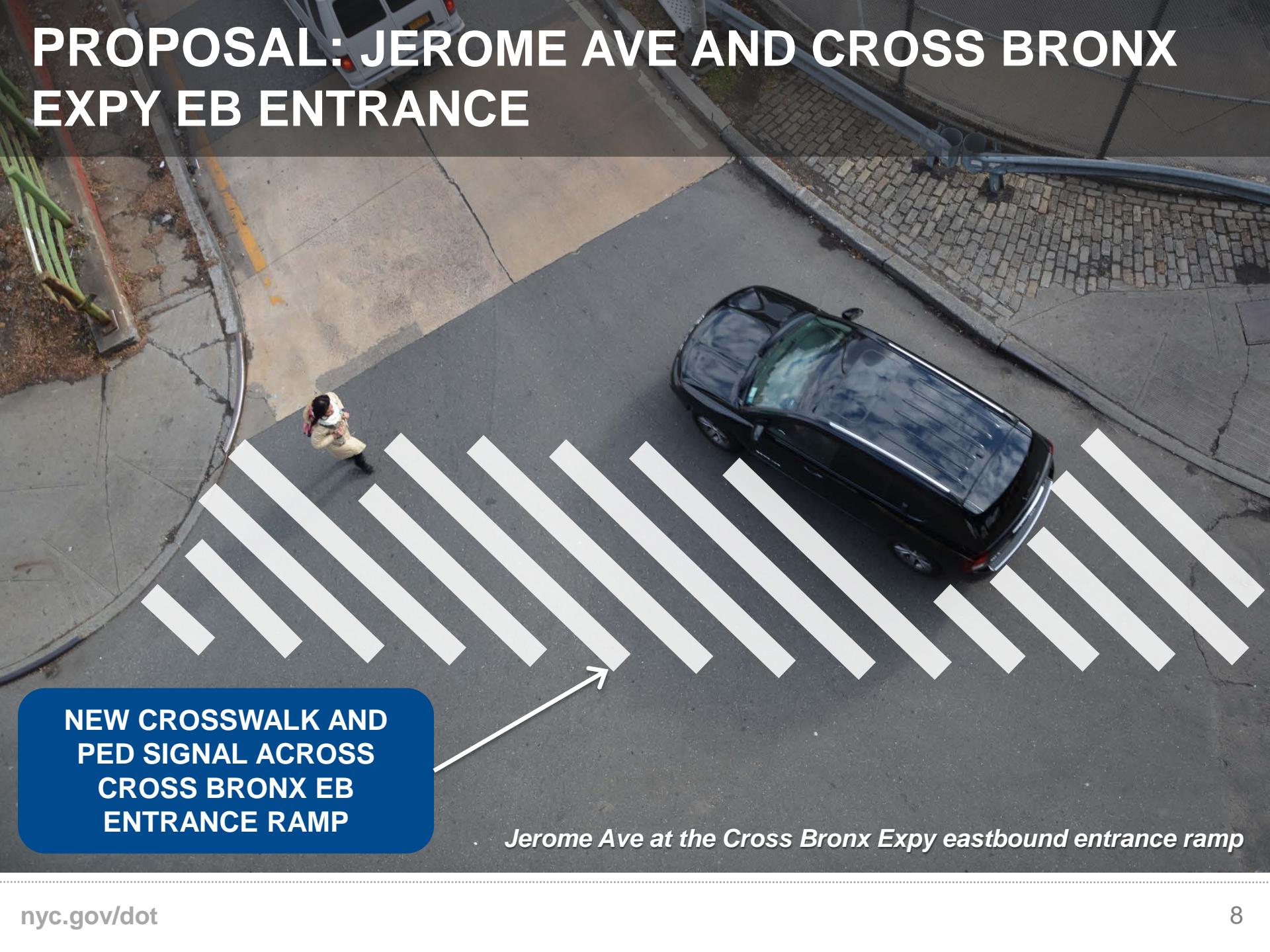


# EXISTING CONDITIONS: JEROME AVE AND CROSS BRONX EXPY EB ENTRANCE





# PROPOSAL: JEROME AVE AND CROSS BRONX EXPY EB ENTRANCE

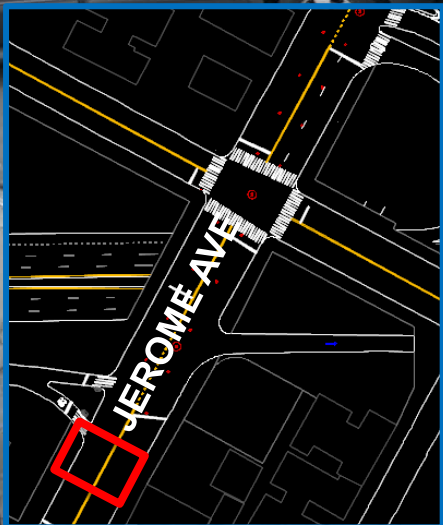
An aerial photograph of a street intersection. A black SUV is driving on the road, which has a series of white diagonal stripes painted across it. A person is walking on the sidewalk to the left of the road. A blue callout box with white text is in the bottom left, and a white arrow points from it to the stripes on the road.

**NEW CROSSWALK AND  
PED SIGNAL ACROSS  
CROSS BRONX EB  
ENTRANCE RAMP**

*Jerome Ave at the Cross Bronx Expy eastbound entrance ramp*



# EXISTING CONDITIONS: JEROME AVE AND CROSS BRONX EXPY EB EXIT

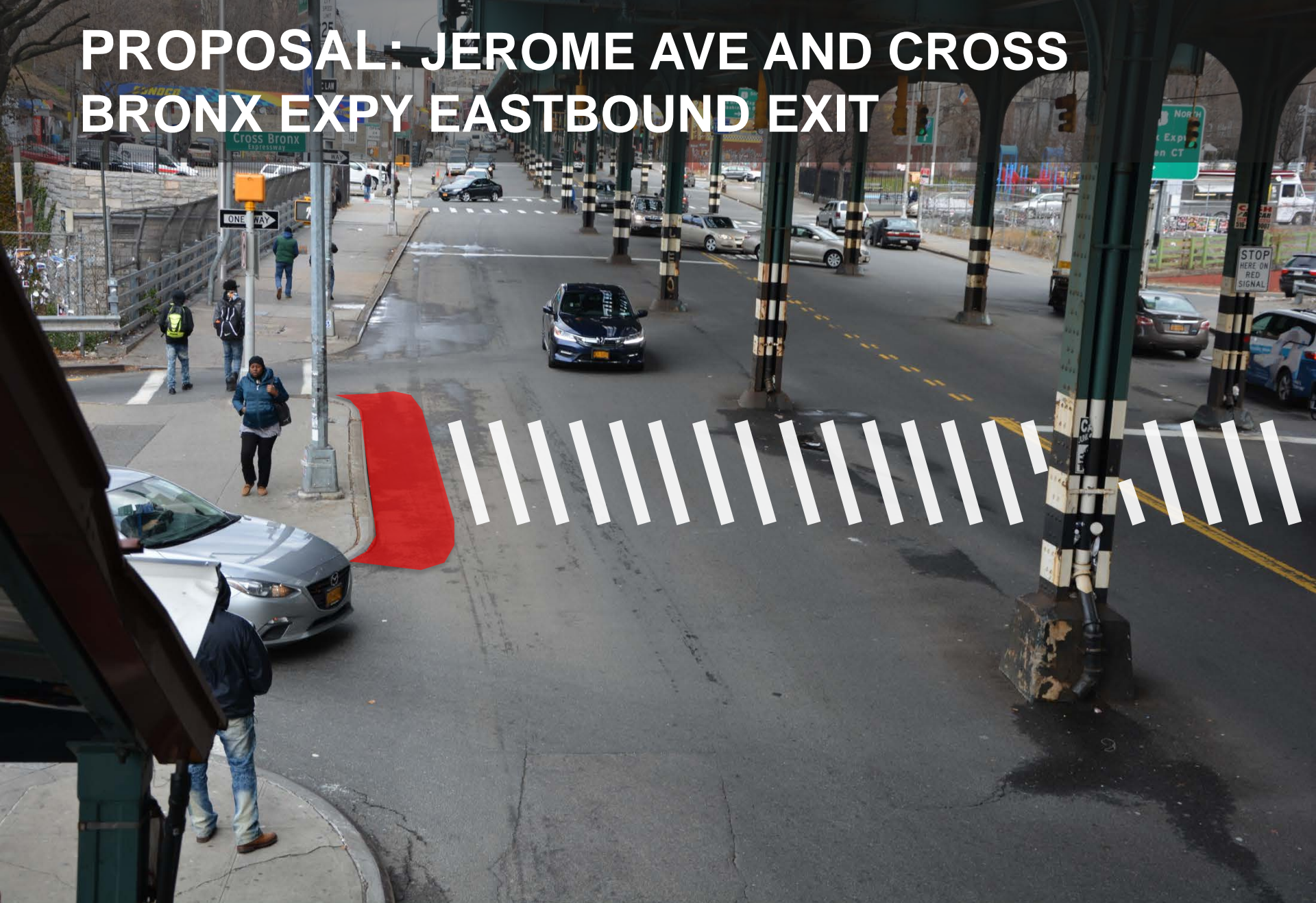


**LONG DISTANCE BETWEEN  
CROSSWALKS ACROSS JEROME  
AVE LEADS TO JAYWALKING**

*Jerome Ave at the Cross Bronx Expy eastbound exit ramp, facing north*



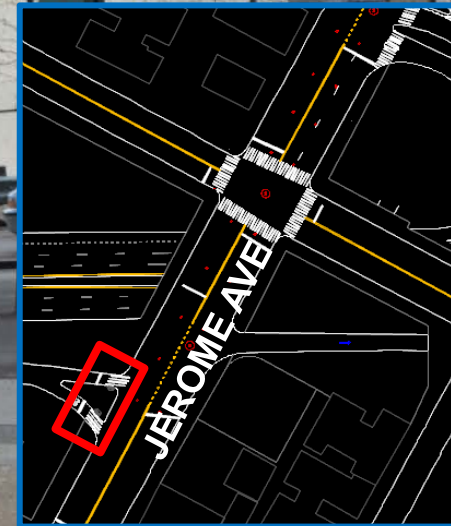
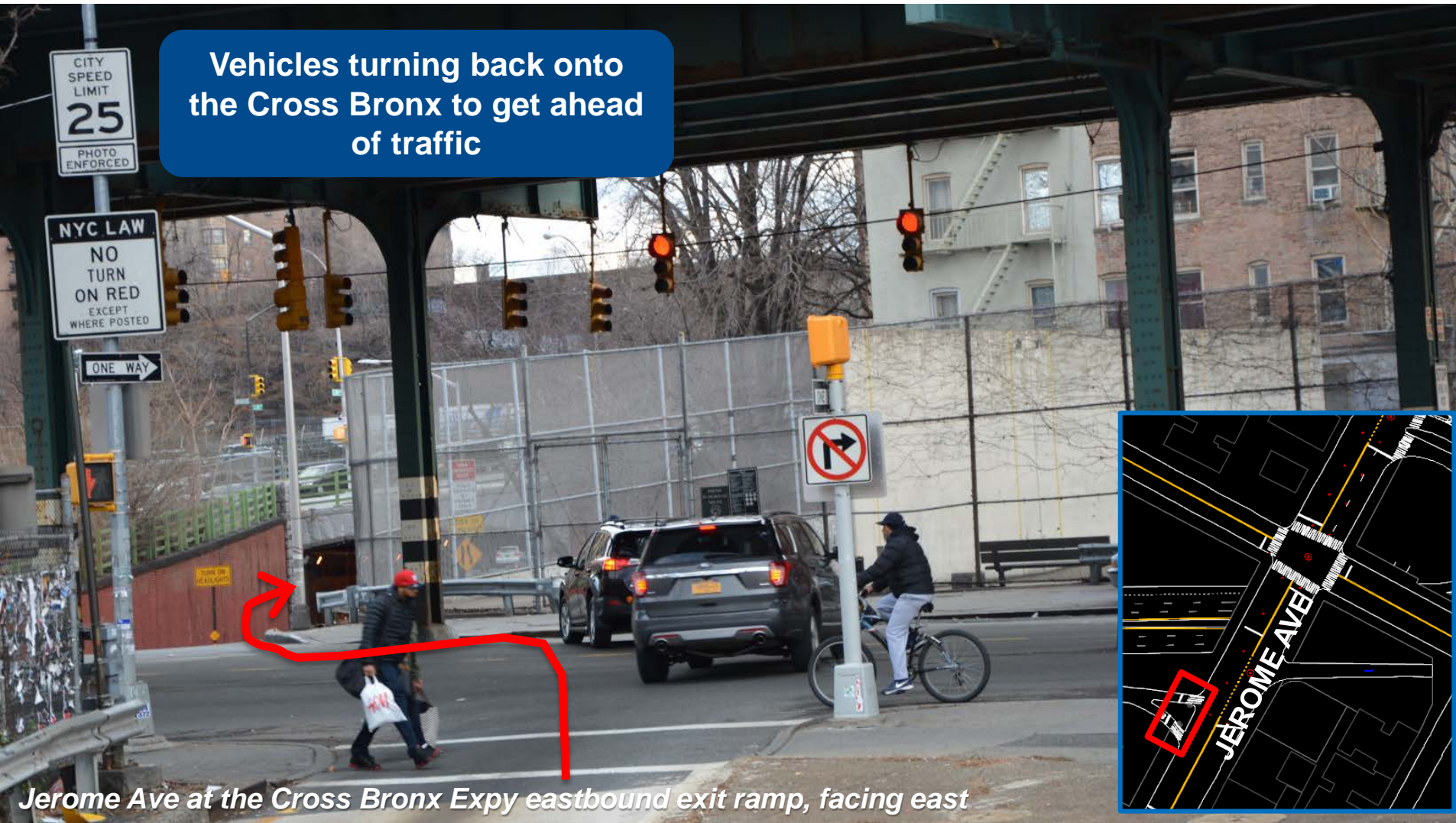
# PROPOSAL: JEROME AVE AND CROSS BRONX EXPY EASTBOUND EXIT





# EXISTING CONDITIONS: JEROME AVE AND CROSS BRONX EXPY EASTBOUND EXIT

Vehicles turning back onto the Cross Bronx to get ahead of traffic



*Jerome Ave at the Cross Bronx Expy eastbound exit ramp, facing east*



# PROPOSAL: SIGNAL CHANGES

Change signal to clarify that all vehicles must turn onto Jerome

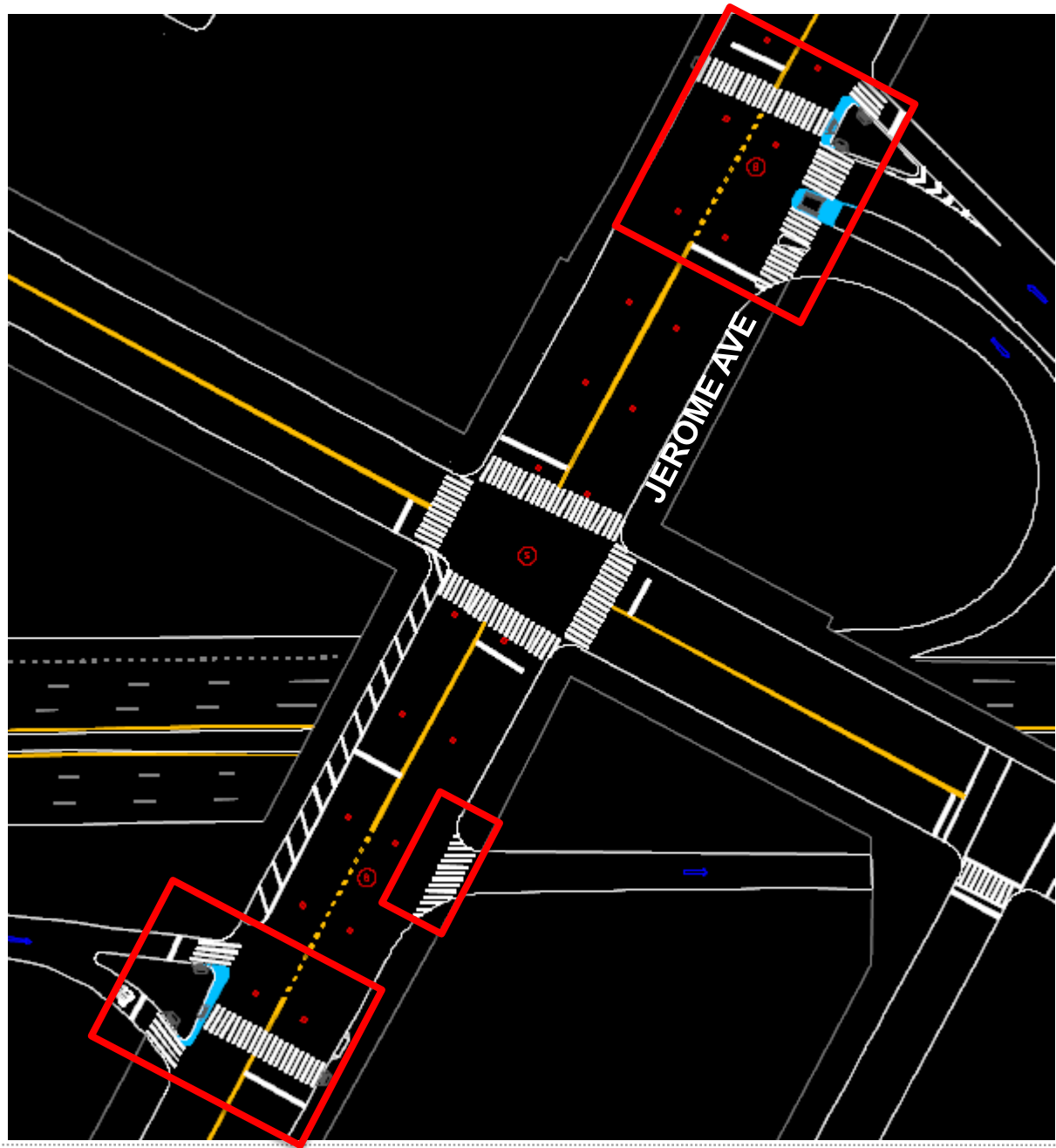


*Jerome Ave at the Cross Bronx Expy eastbound exit ramp, facing east*



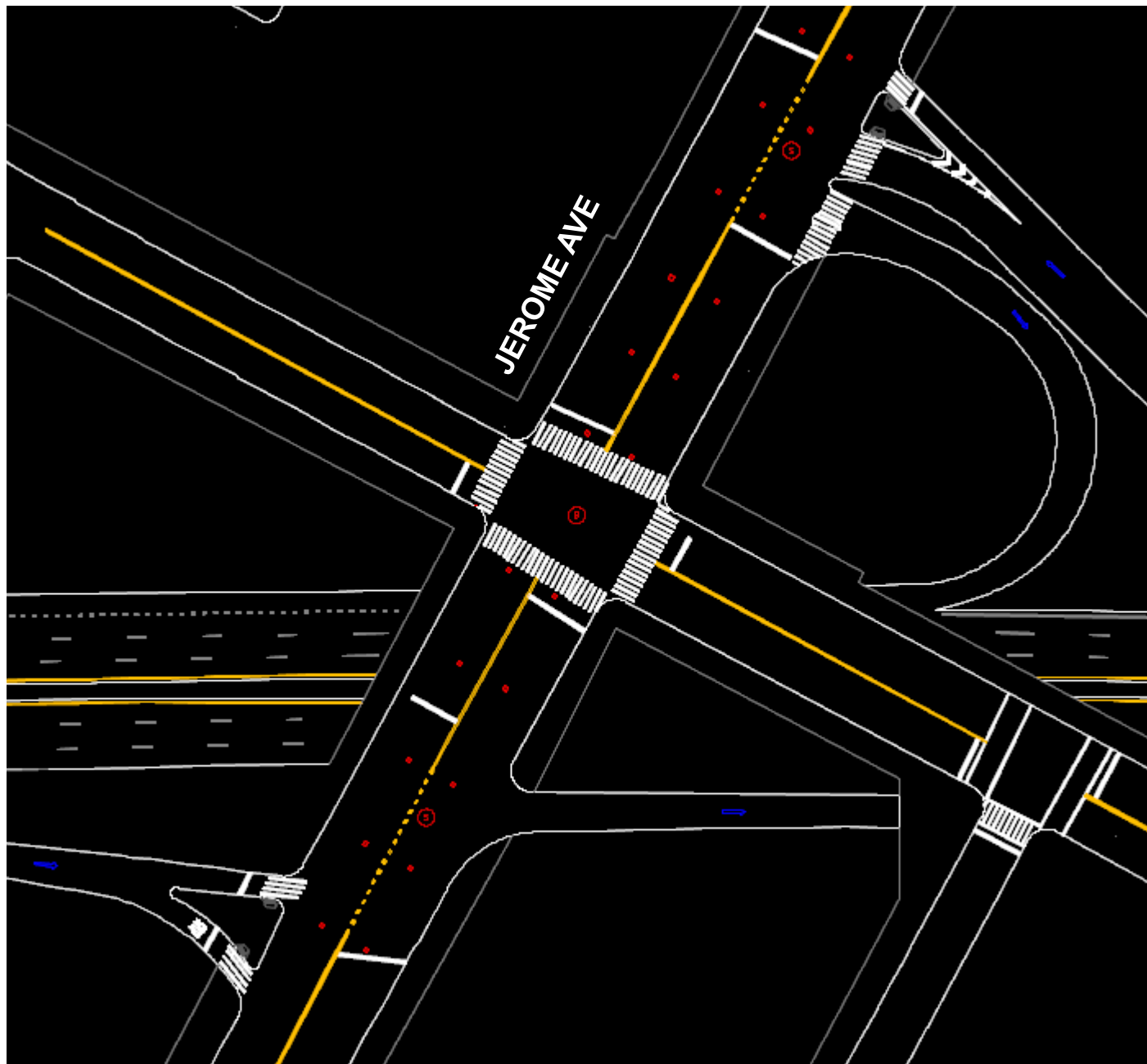
# BENEFITS OF PROPOSALS

- Improves pedestrian safety at busy highway entrance/exit ramps
- Safer, shorter, ADA-compliant pedestrian crossings at locations used by students
- Provides missing crosswalks where people are currently crossing



# EXISTING

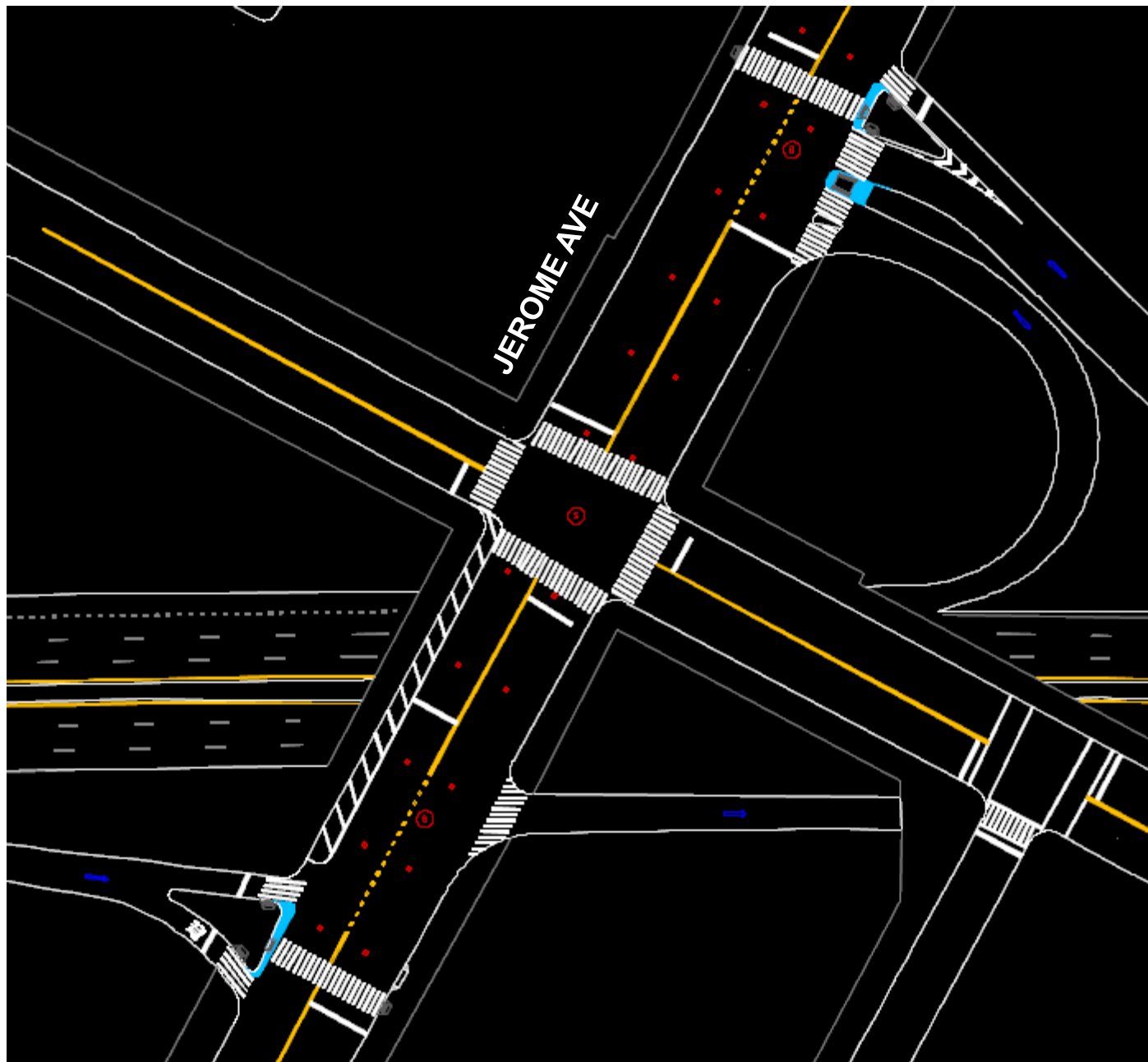
---





# PROPOSED

---



# THANK YOU!

## Questions?



Contact: Bronx Borough Commissioner's Office at (212) 748-6680



NYC DOT



NYC DOT



nyc\_dot



NYC DOT