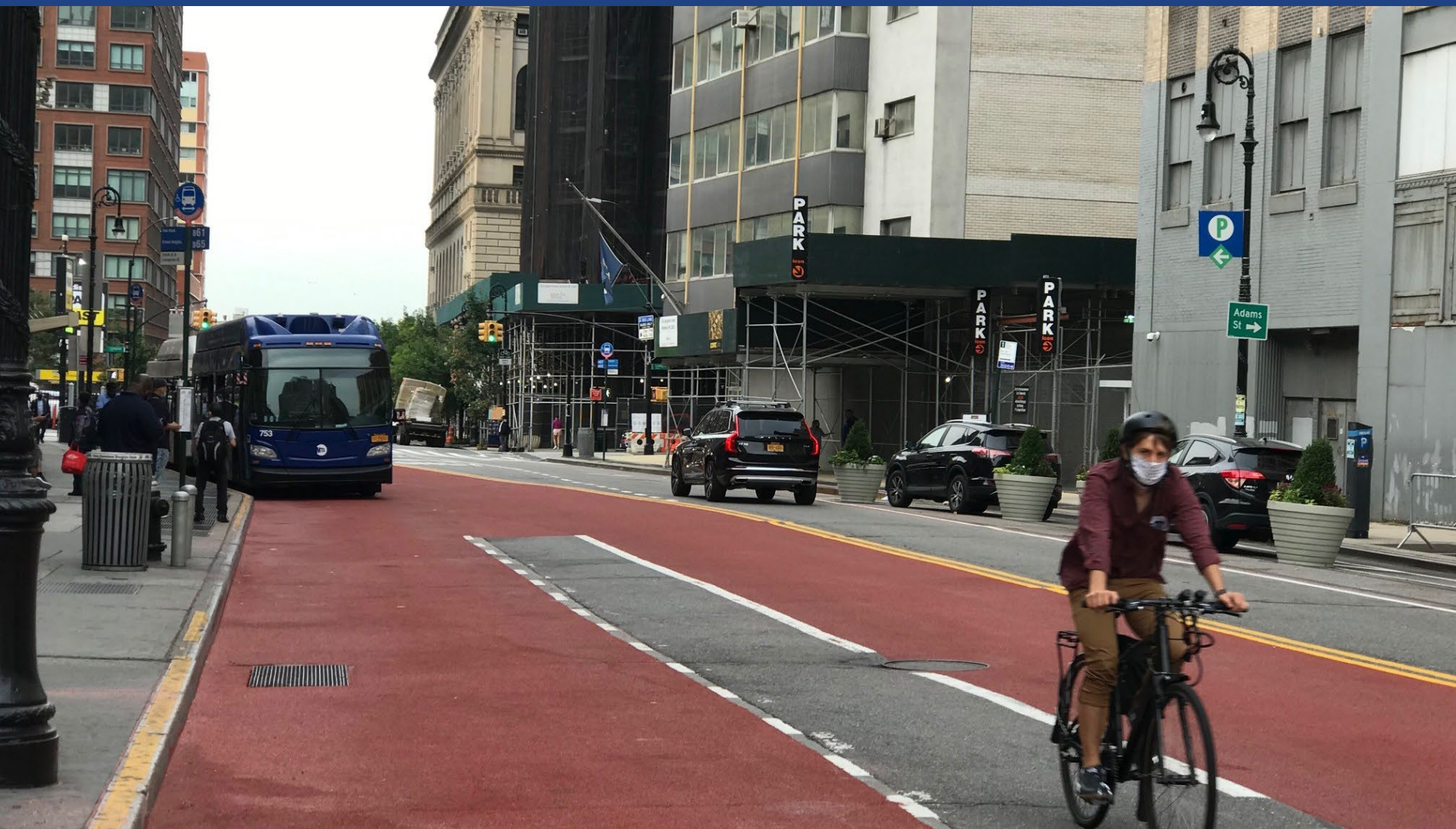


# Jay Street Busway Pilot

Community Advisory Board Meeting #4

October 8, 2020



# Outline

---

- Implementation
- Monitoring and Observations
- Public Feedback
- Ongoing Areas of Focus
- Discussion

# Implementation

## Signs



**Smith St and Atlantic Ave**



**Adams St and Johnson St**



# Implementation

## Pavement Markings



**Tillary St and Jay St**



**Smith St and Livingston St**

# Implementation

Opening – August 31



Smith St and Livingston St



# Implementation

Opening – August 31



Tillary St and Jay St

# Implementation

Opening – August 31



Jay Street



# Implementation

## Red Bus Paint



**MetroTech Lay-by**



**Tillary St Turn Bay**



# Implementation

## Remaining Items

- Complete painting
  - green bike lanes
  - tan pedestrian islands
- Install plastic bollards



# Monitoring and Observations

## General Observations

- Reduced traffic volumes on Jay Street
- Increases in bus speeds
- Limited observed congestion
- Learning curve for drivers to avoid Jay Street
- Illegal parking reduced but still an issue





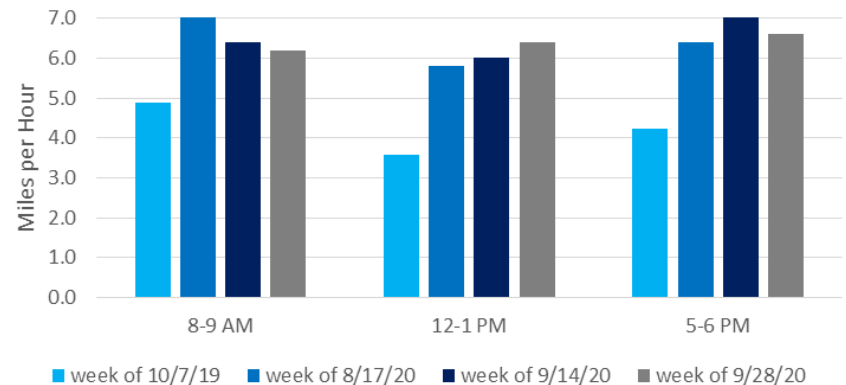
# Monitoring and Observations

## Bus Speeds

- **Post-implementation speeds much faster than 2019**
  - Southbound 27% to 79% increase
  - Northbound 45% to 81% increase
- **Changes in speeds from mid-August to mid-September varies across time periods**
  - Fare collection resumed August 31<sup>st</sup> – impacted bus travel times.
- **The challenge** – maintain speeds as background traffic continues to rebound.

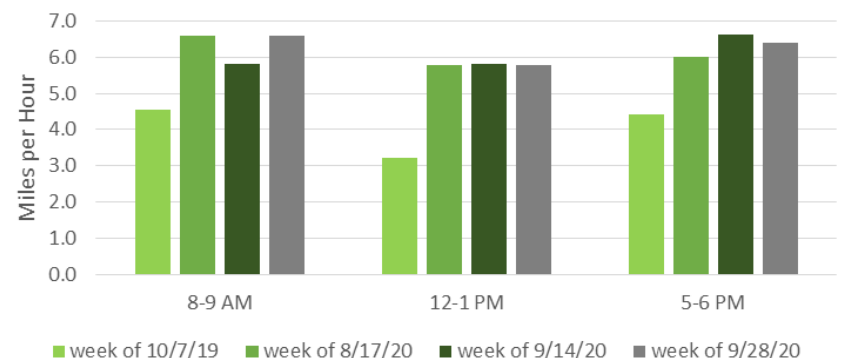
### Jay Street Weekday Bus Speeds

Tillary St to Fulton St(SB)



### Jay Street Weekday Bus Speeds

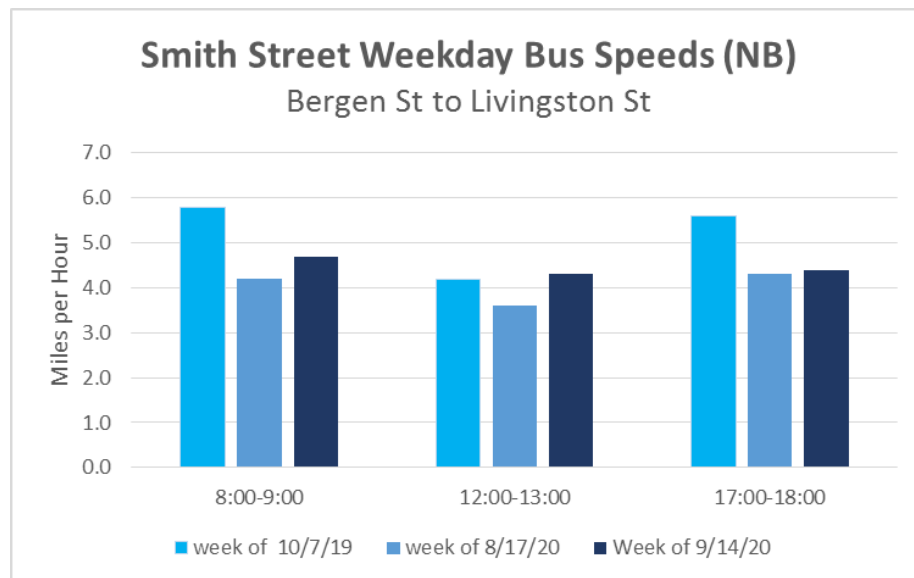
Fulton St to Tillary St (NB)



# Monitoring and Observations

## Bus Speeds – Smith Street

- **June - Temporary protected bike lane reduces Smith Street NB approach from two lanes to one**
- **Permanent bike lane design maintains one approach lane. Busway pilot intended to reduce Smith Street NB volumes.**
- **Bus speeds fell from October 2019 to August 2020 and rebounded in September 2020**
- **Will continue to monitor bus speeds on Smith Street NB**

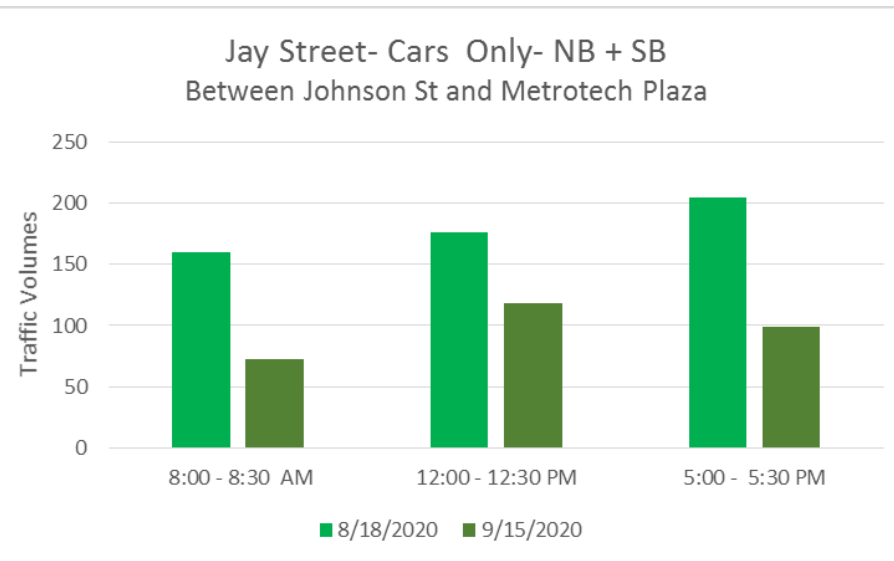
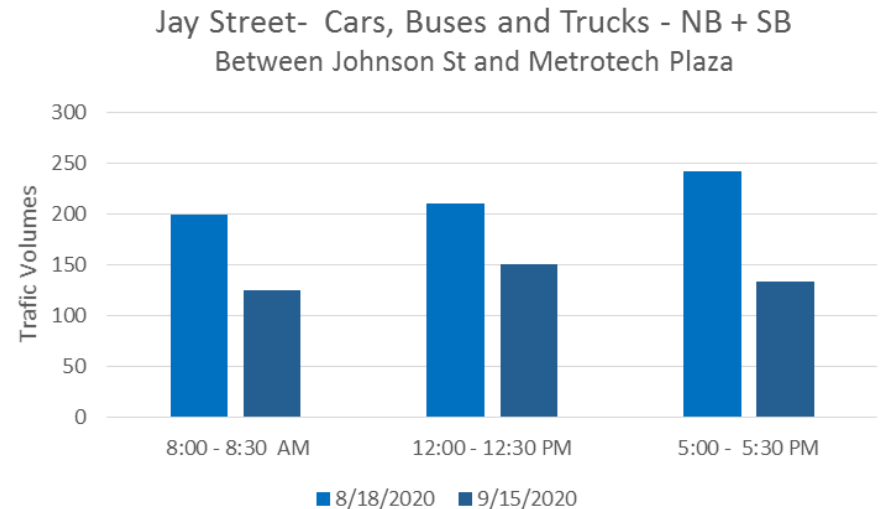




# Monitoring and Observations

## Traffic Volumes

- **Reduction in overall traffic and car volumes across all Busway time periods**
- **Greatest reduction in AM and PM peak hours**
- **28 to 45% reduction in all traffic on Jay Street**
- **33 to 54% reduction in car traffic on Jay Street**



# Monitoring and Observations

## Diversions

- **Average vehicles in queue manually counted in AM peak at identified diversion locations**

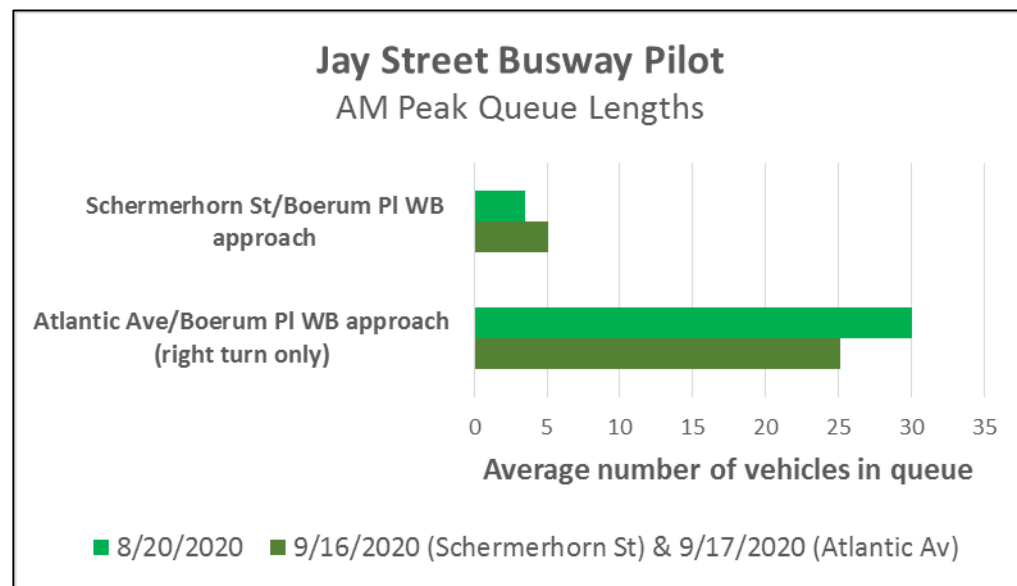
- Schermerhorn St WB approach to Boerum Place
- Atlantic Ave WB right turn on to Boerum PI

- **Results:**

- Schermerhorn St = slight increase to queue but volumes remained low.
- Atlantic Ave = Decrease to average queue from 30 to 25 vehicles

- **Other Observations**

- Livingston St east of Smith St has periodic congestion
- Tillary St has periodic congestion eastbound and westbound





# Monitoring and Observations

## Illegal Parking and Standing

- **Illegal parking and standing observed between MetroTech Rdwy and Johnson St in AM, midday, and PM**
  - Included double parking and parking in bus stop
  - Did not count placard parking at curb
- **Results**
  - AM: 35% reduction
  - MD: 5% reduction
  - PM: 47% reduction
- **Other observations**
  - Double parking in front of 330 Jay St (MCU ATM) still prevalent
  - Parking in MetroTech bus layby impedes buses and bikes



# Monitoring and Observations

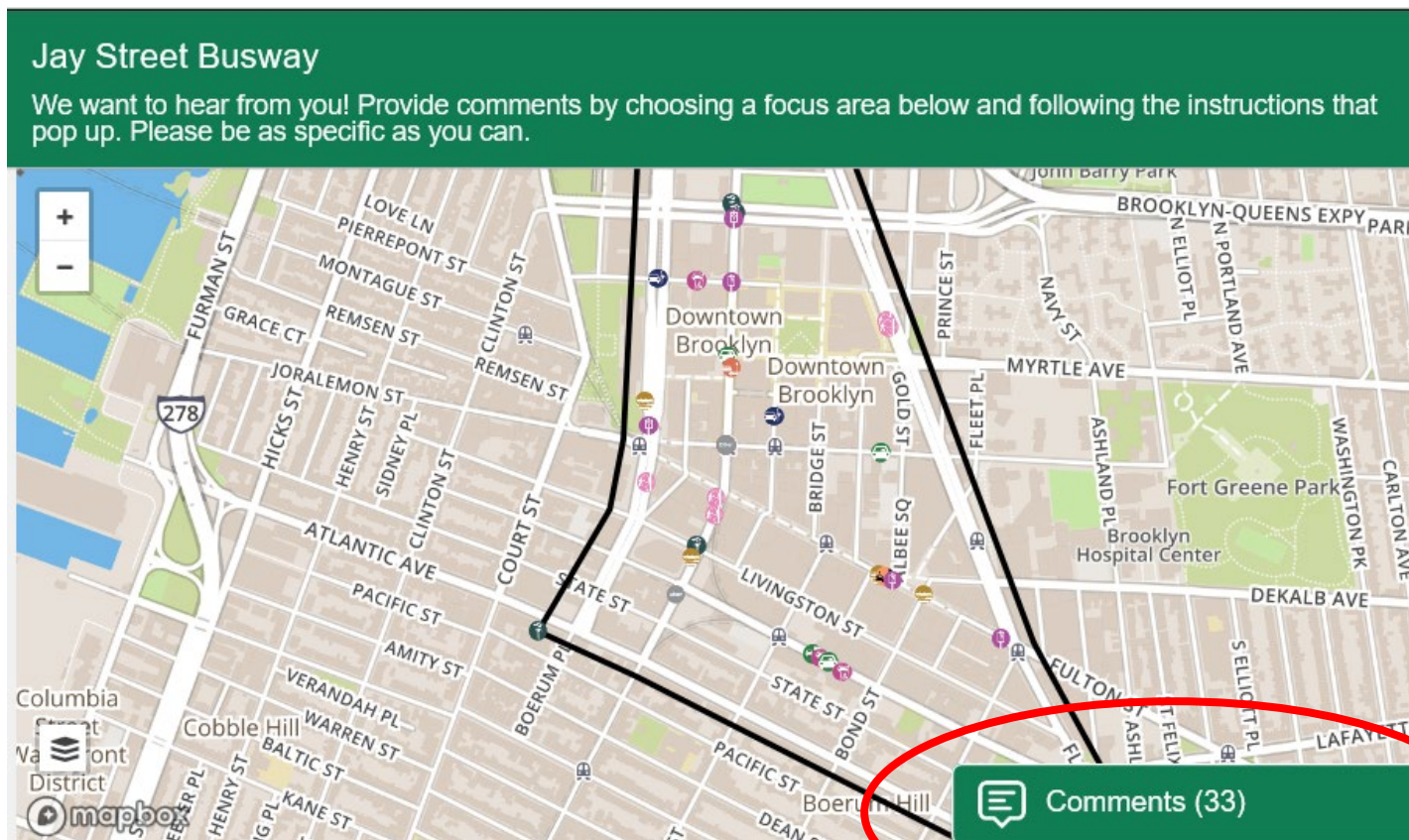
---

## Next Steps

- Continue ongoing informal observations, especially after markings and vertical elements are completed
- Conduct another formal round of observations before Thanksgiving
- Let us know what **you** are seeing

# Public Feedback

## Feedback Portal





# Public Feedback

## Feedback Portal

Category	Number of Comments	Specific Concerns
Signage Problems	5	Not enough signs, signs too small on Fulton Mall, Jay Street
Inaccessible Destination	5	Concerns about access for business deliveries. Concerns about placard parking.
Parking In Bike Lane	4	Locations identified include Schermerhorn St, new Johnson St bike lane, Jay Street
Bus Stuck in Traffic	4	Locations identified include Smith St, Adams St, and Fulton Mall,
Difficult Turn/Crossing	4	Locations identified include Tillary/Jay intersection, Adams Street

*Comments received as of 10/1/2020*

# Ongoing Areas of Focus

---

- Signage
- Enforcement
- Congestion

# Ongoing Areas of Focus

## Signage

- Additional signage at both gateways
- Additional advance signage on Tillary Street





# Ongoing Areas of Focus

## Enforcement

- Traffic Enforcement Agents
  - No longer posted at gateways
- Bus Lane Cameras
  - To be installed at gateways
  - Installation in November



# Ongoing Areas of Focus

## Congestion

- Will continue to monitor:
  - Diversion routes
  - Smith St approach



# Discussion

---

What have **you** observed?

What have **you** heard from others?

What else should **we** be focusing on?



# Thank You!

---

## Questions?



NYC DOT



NYC DOT



nyc\_dot



NYC DOT