

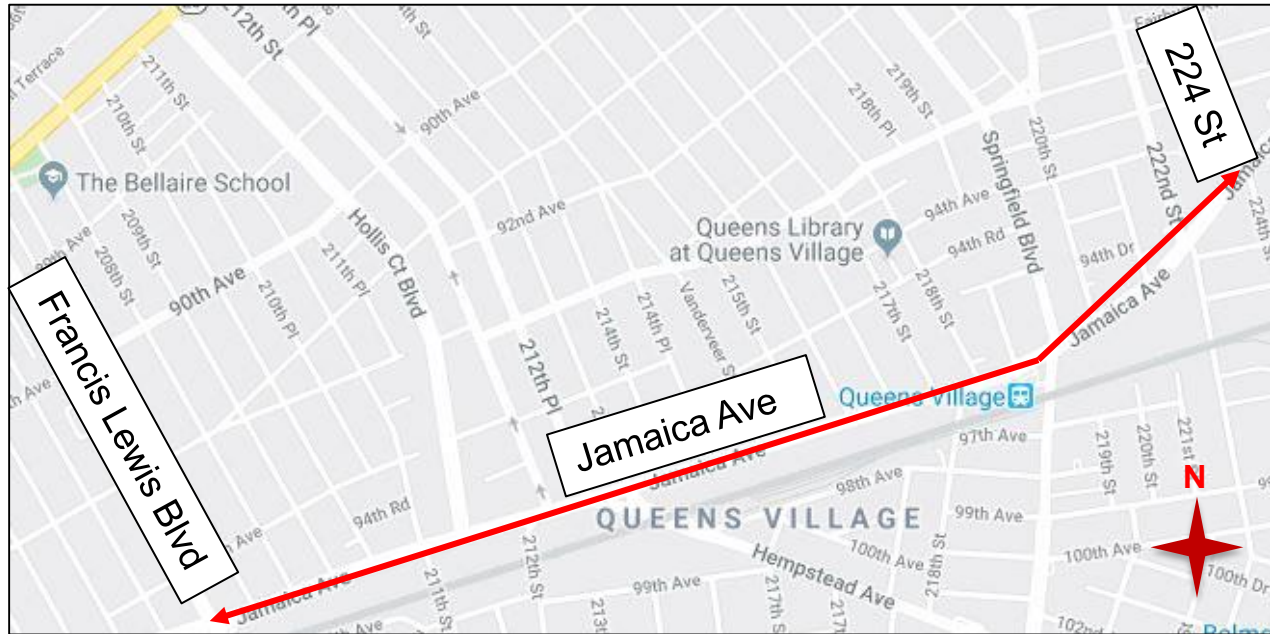


JAMAICA AVENUE

Francis Lewis Blvd to 224th St
Queens CB 13, June 8, 2020

PROJECT LOCATION

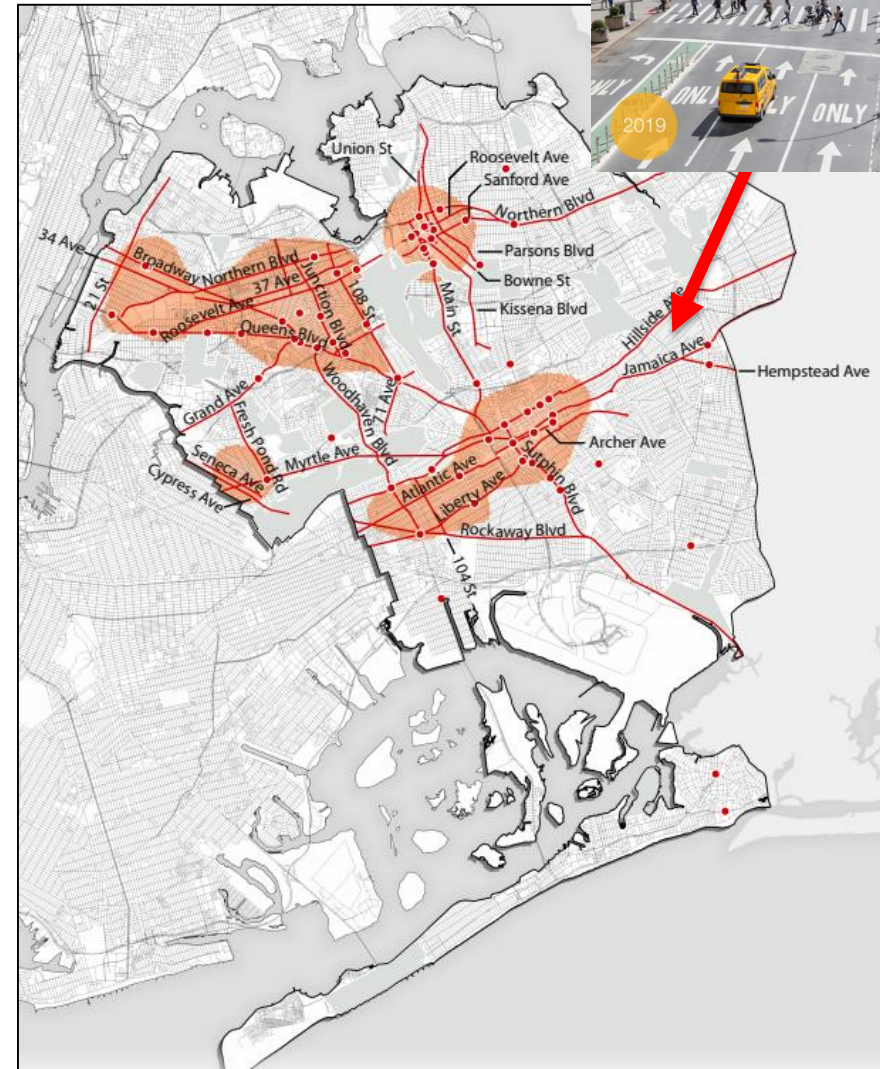
- Project limits: Francis Lewis Blvd to 224 St
- Residential and commercial land use
- Truck routes on Jamaica Ave, Springfield Blvd, and Hempstead Ave
- Q1, Q88, Q27, Q27 LTD bus stops, LIRR station
- Previous safety improvements on Jamaica between 168 St and Francis Lewis Blvd in 2018



SAFETY DATA

Vision Zero

- Jamaica Ave is a Vision Zero Priority Corridor
- Jamaica Ave & Springfield Blvd is a Vision Zero Priority Intersection



SAFETY DATA

- High crash corridor with 16.7 persons killed or seriously injured per mile
- Ranked in the top 10% of Queens corridors, 2013-2017

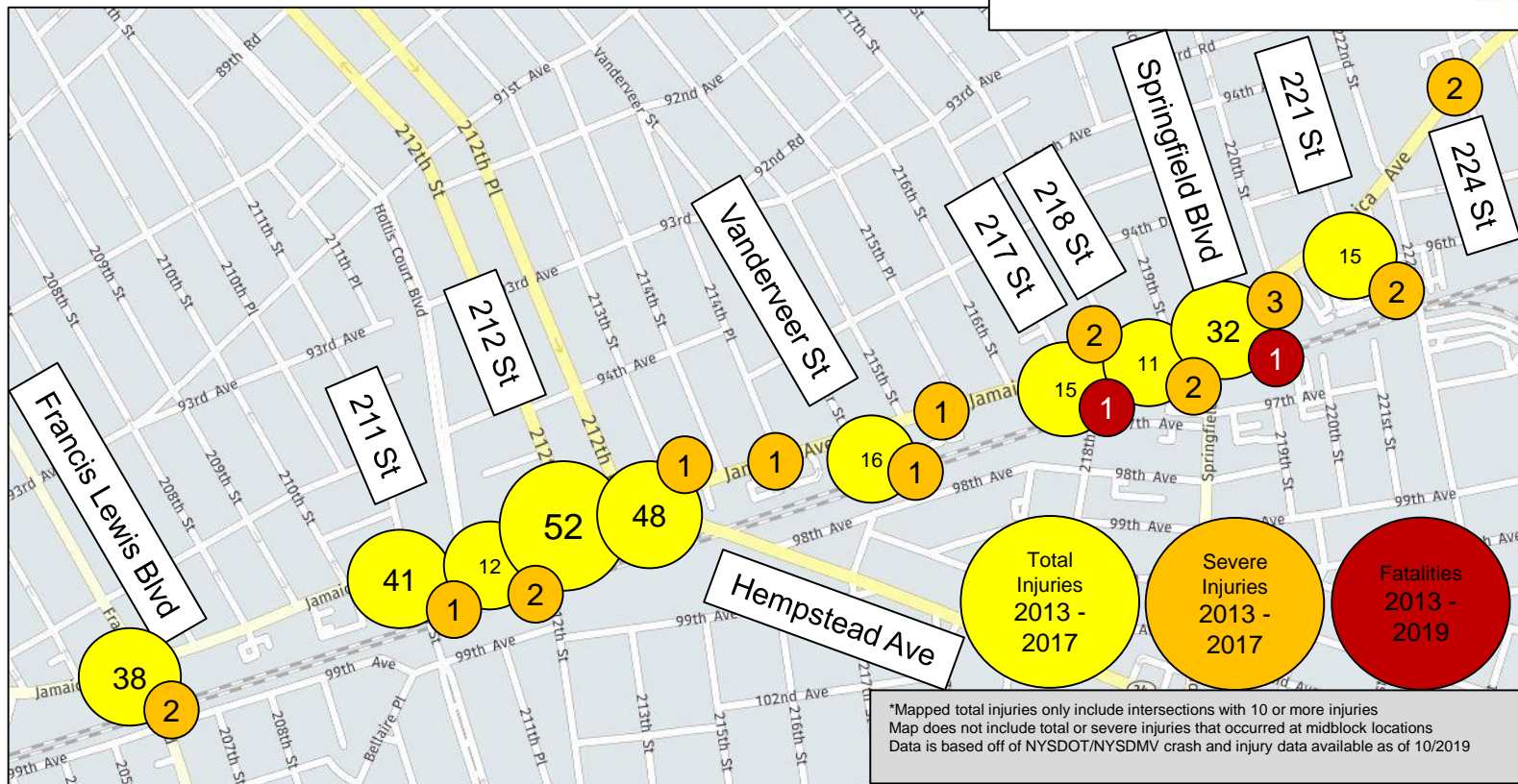
Jamaica Ave - Francis Lewis Blvd to 224 St, QN

Injury Summary, 2013-2017 (5 Years)

	Total Injuries	Severe Injuries	Fatalities	KSI
Pedestrian	58	9	1	10
Bicyclist	8	0	0	0
Motor Vehicle Occupant	337	11	1	12
Total	403	20	2	22

Fatalities, 01/01/2013-10/21/2019 : 2

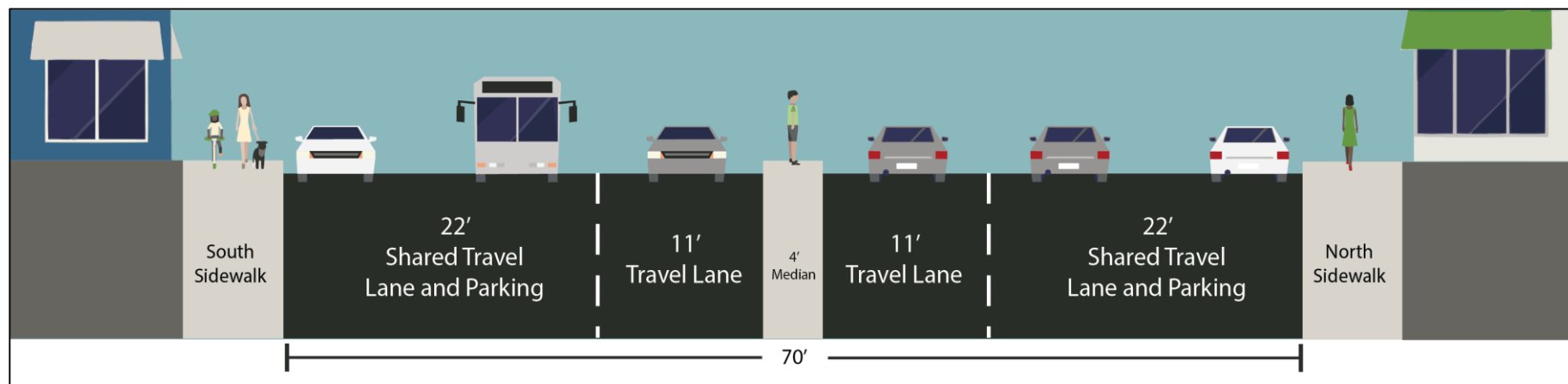
Source: Fatalities: NYCDOT
Injuries: NYSDOT
KSI: Persons Killed or
Severely Injured



EXISTING CONDITIONS

Francis Lewis Blvd – 224 St

- Jamaica Ave is 70' wide with two moving lanes, a 4' concrete median, and parking in each direction
- Wide travel lanes and lack of marked parking lane encourage speeding and unpredictable vehicle movements



EXISTING CONDITIONS

Francis Lewis Blvd – 224 St



**Wide travel lanes encourage speeding,
unpredictable vehicle movements**

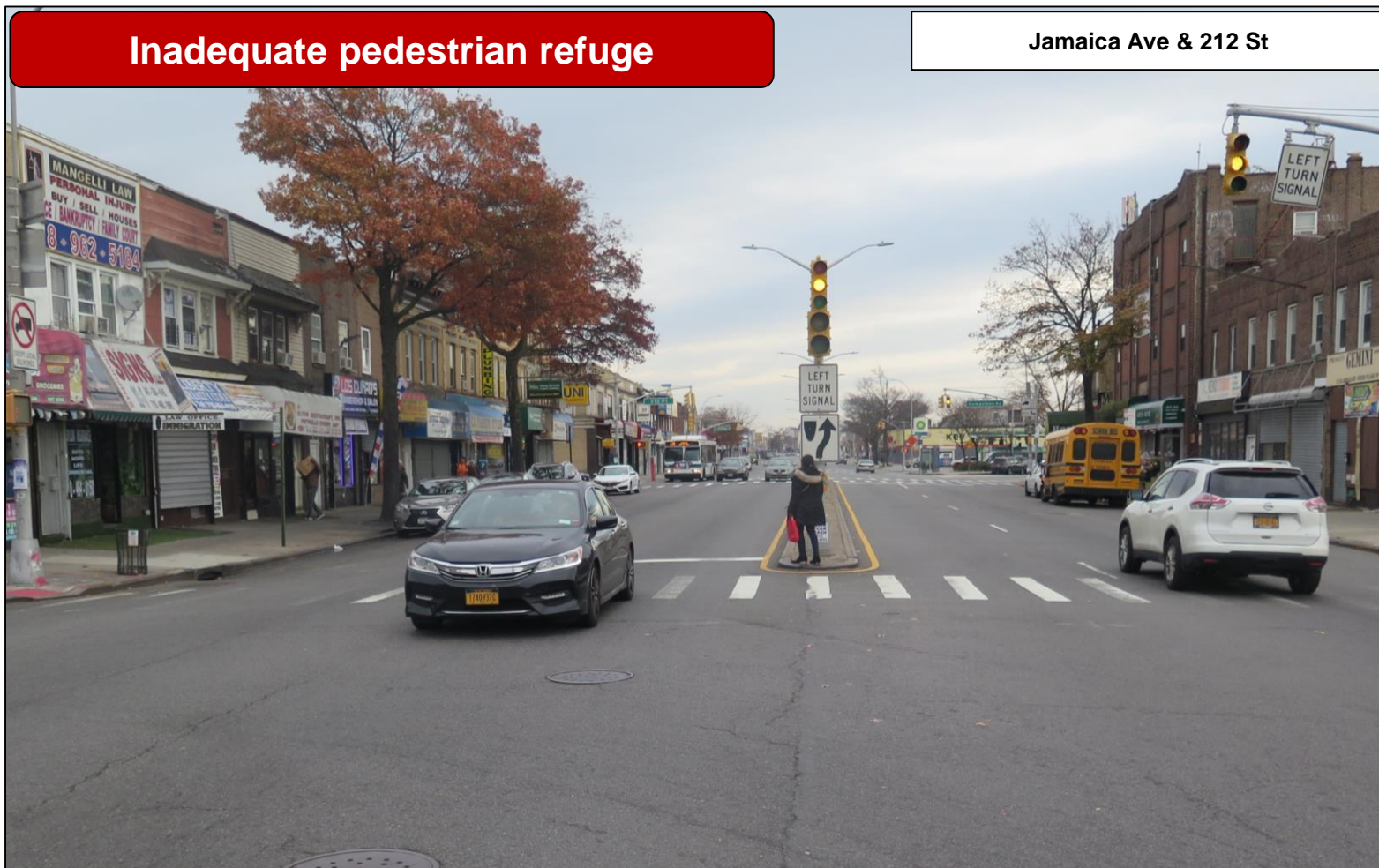
Jamaica Ave & 212 St

EXISTING CONDITIONS

Francis Lewis Blvd – 224 St

Inadequate pedestrian refuge

Jamaica Ave & 212 St



EXISTING CONDITIONS

Jamaica Ave & Springfield Blvd



EXISTING CONDITIONS

Jamaica Ave & Springfield Blvd

Overlapping left turns cause conflict between vehicles and pedestrians

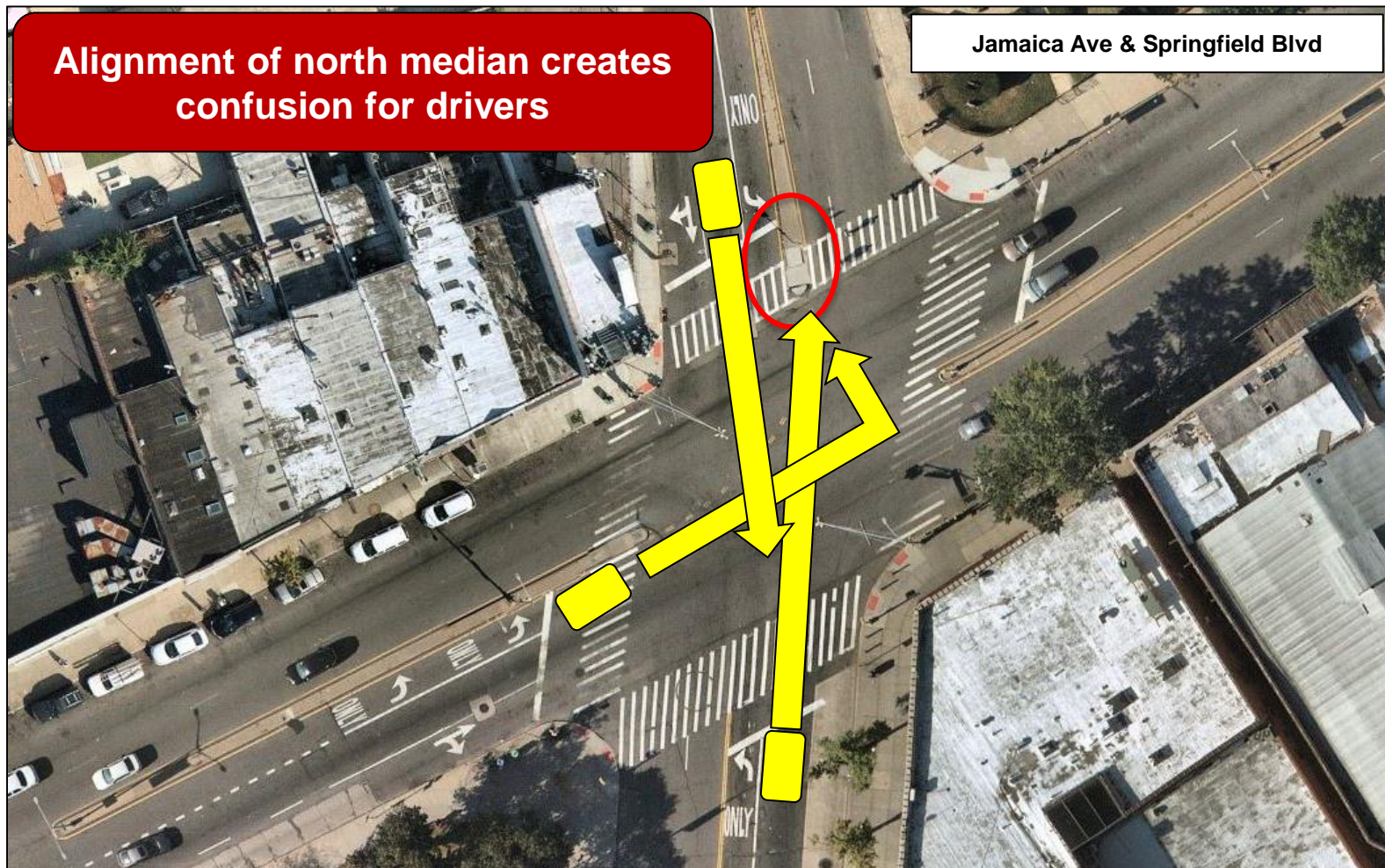
Jamaica Ave & Springfield Blvd

80% of pedestrian injuries at this intersection are caused by a failure to yield



EXISTING CONDITIONS

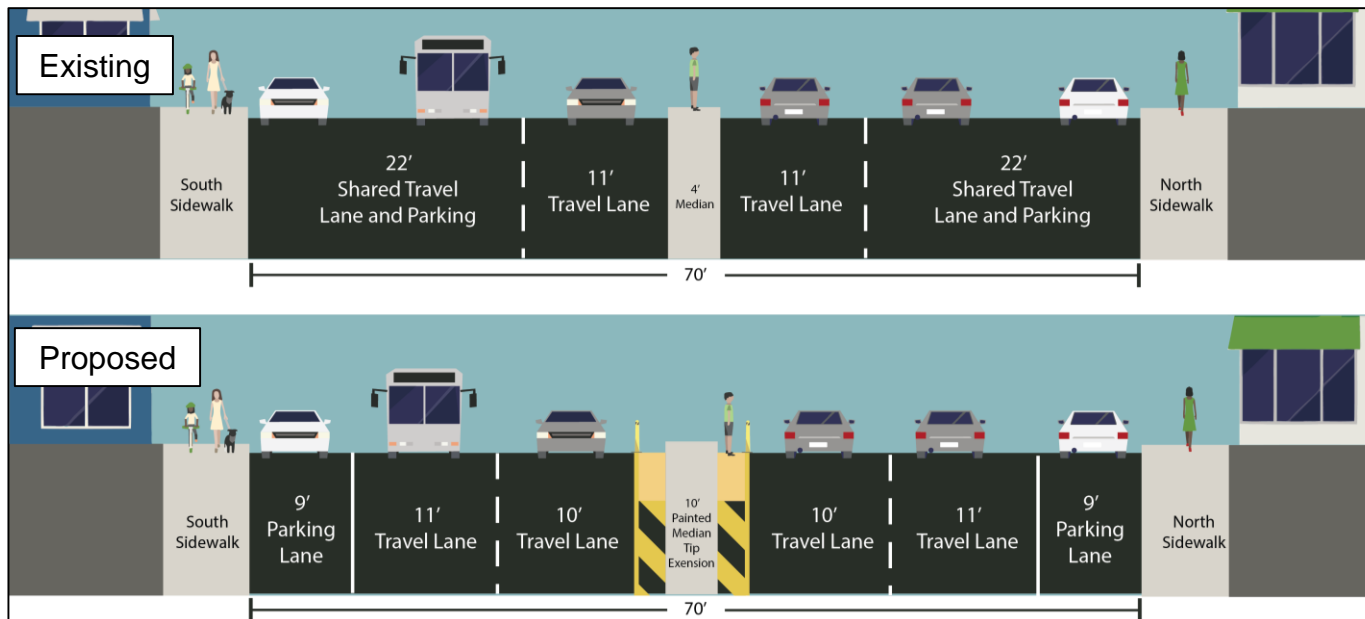
Jamaica Ave & Springfield Blvd



PROPOSED IMPROVEMENTS

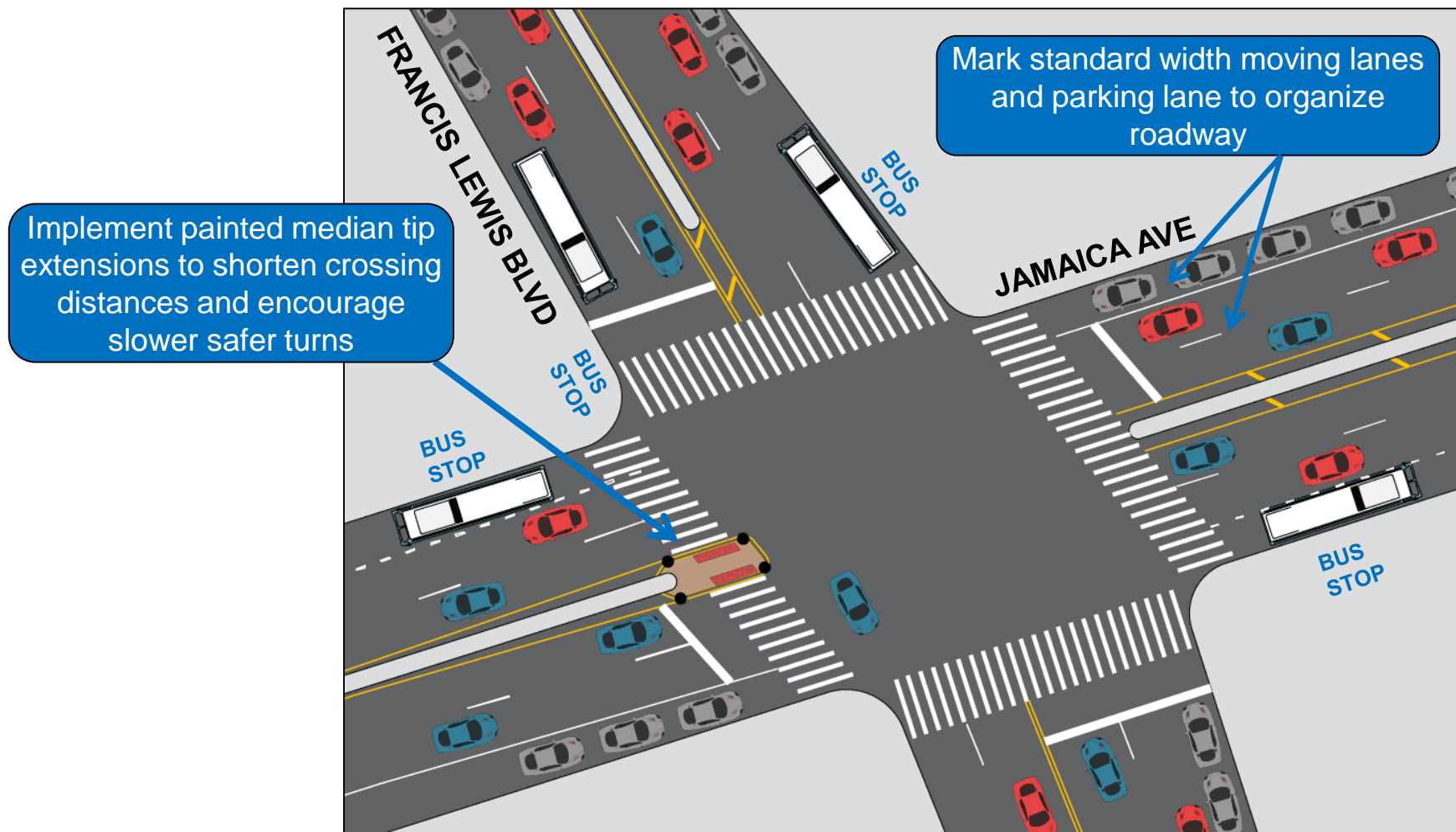
Francis Lewis Blvd – 224 St

- Installing markings to visually clarify parking and moving lanes along the corridor discourages speeding and unpredictable vehicle movements
- Painted median tip extensions provide pedestrian refuge at 10 intersections: Francis Lewis Blvd, 207 St, 209 St, 211 St, Hollis Court Blvd, 212 St, 212 Pl, 214 Pl, 216 St, and 217 St



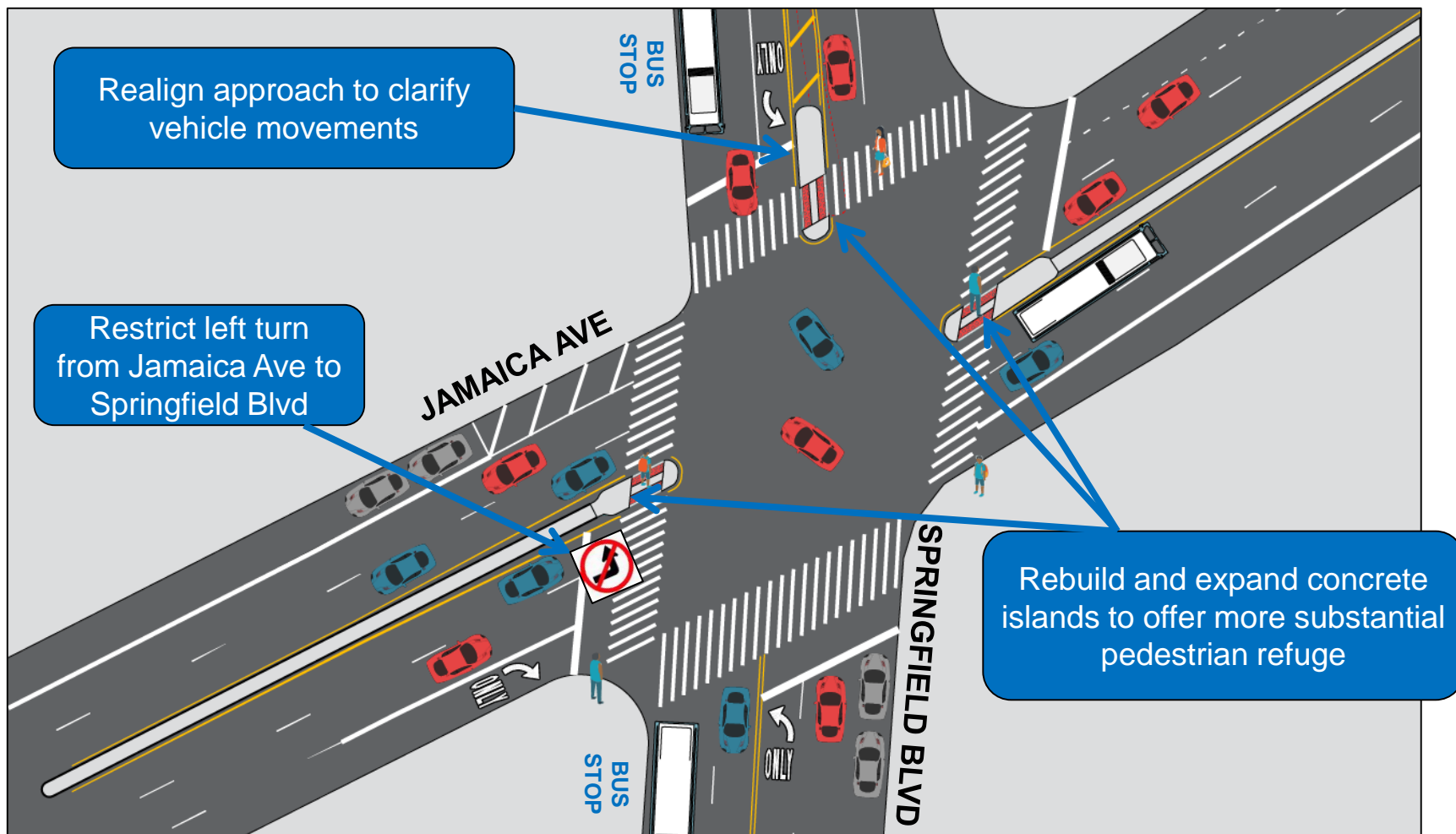
PROPOSED IMPROVEMENTS

Francis Lewis Blvd – 224 St



PROPOSED IMPROVEMENTS

Jamaica Ave & Springfield Blvd



SUMMARY

- Expanded median tips shorten crossing distances and provide refuge for pedestrians
- Expanded median tips encourage slower, safer turns by vehicles
- Standard width moving lanes and marked parking lane discourage speeding
- Restricting left turn at Springfield Blvd simplifies turning movements and minimizes conflict for pedestrians

Existing: Jamaica Ave at Springfield Blvd



Proposed: Jamaica Ave at 176 St



THANK YOU!

Questions?



NYC DOT



NYC DOT



nyc_dot



NYC DOT