

Better Buses Restart: Jamaica Busway

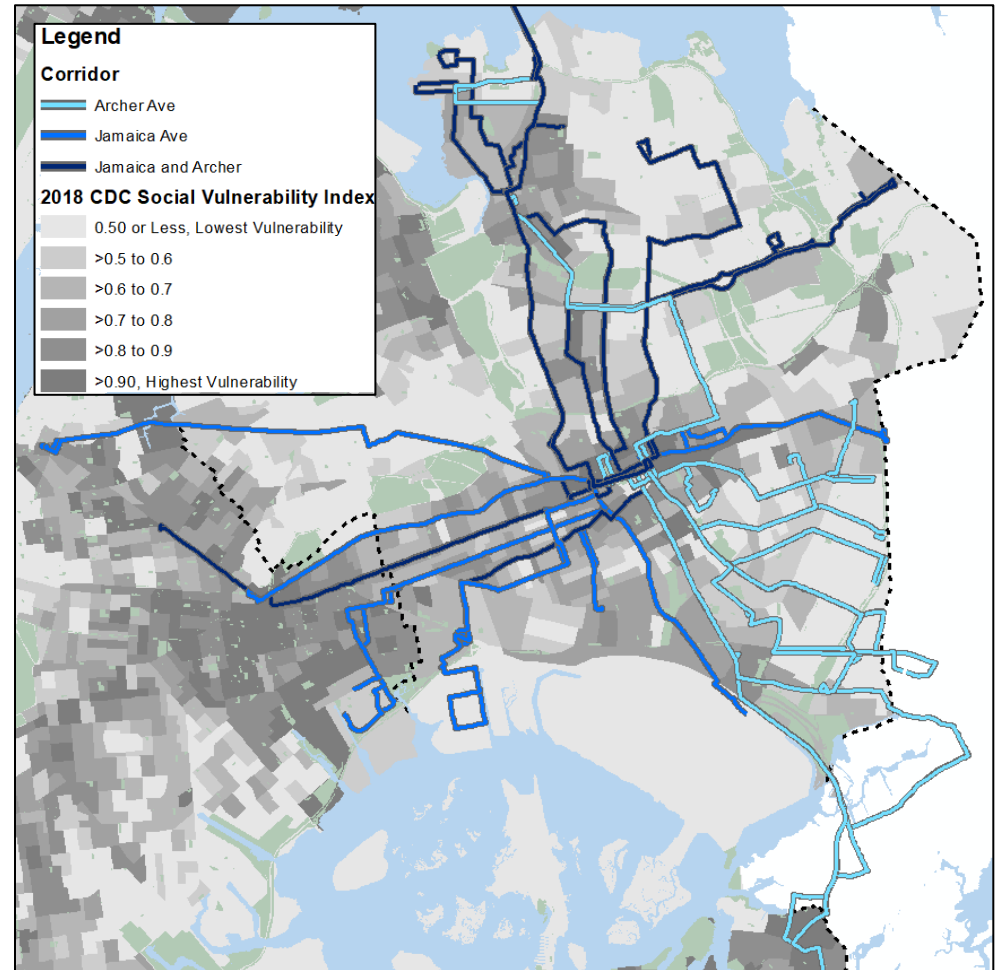
Monitoring Update – November 2022



Why Jamaica and Archer Aves?

- Jamaica Ave
 - Serves 139,000 daily riders
 - 14 bus routes
 - Pre-busway speeds of 6.8 MPH (PM)
- Archer Ave
 - Serves 189,000 daily riders
 - 19 bus routes
 - Pre-busway speeds of 5.3 to 6.1 MPH (PM)
- Congestion is a major issue for buses, passenger vehicles, and pedestrians
- Many of these bus routes travel through neighborhoods that rank high on the CDC's Social Vulnerability Index (SVI)

Jamaica Ave and Archer Ave NYCT and MTA Bus Routes*

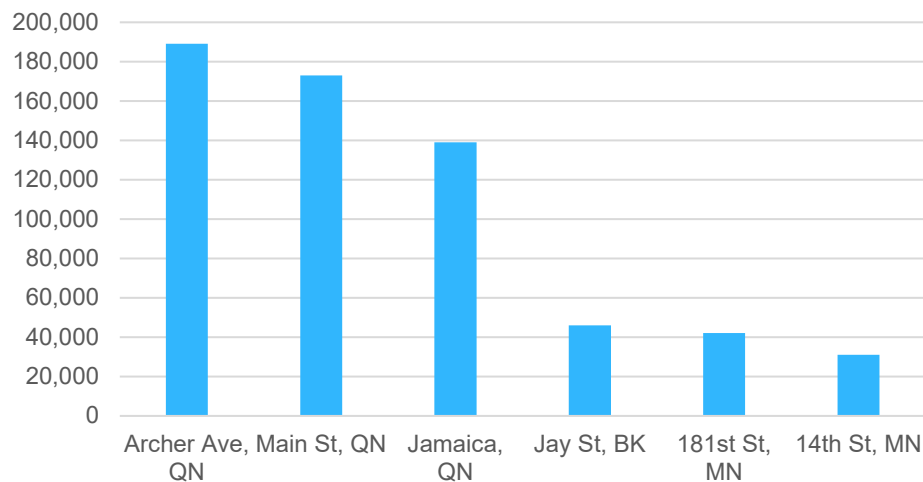


*Routes running between Sutphin Blvd & 168 St only

Bus Corridors Citywide

- Jamaica Ave is one of the highest corridors for bus ridership in the city

Avg. Daily Bus Ridership



Corridor	Daily Ridership	Hours
Archer Ave, QN	189,000	All Days, 24/7
Main St, QN	173,000	All Days, 6AM-7PM
Jamaica, QN	139,000	All Days, 6AM-8PM
Jay St, BK	46,000	Weekdays, 7AM-7PM
181st St, MN	42,000	All Days, 6AM-8PM
14th St, MN	31,000	All Days, 6AM-10PM

Source: MTA

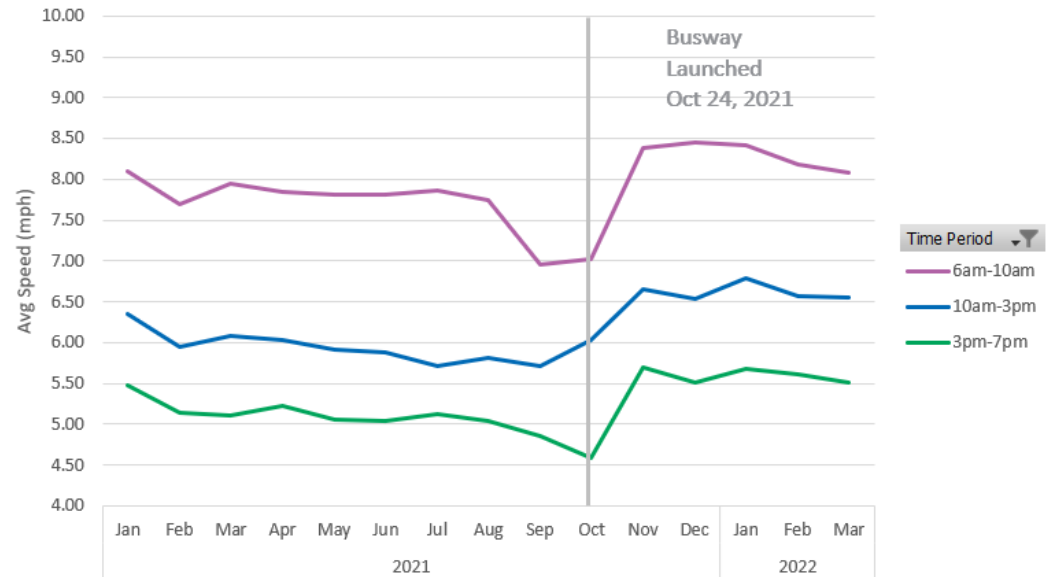
Busway Pilot Monitoring

- NYCDOT has been monitoring the following metrics to evaluate busway success:
 - Bus Speeds
 - Private Vehicle Speeds
 - Safety Metrics
 - Community Feedback
 - Business Feedback

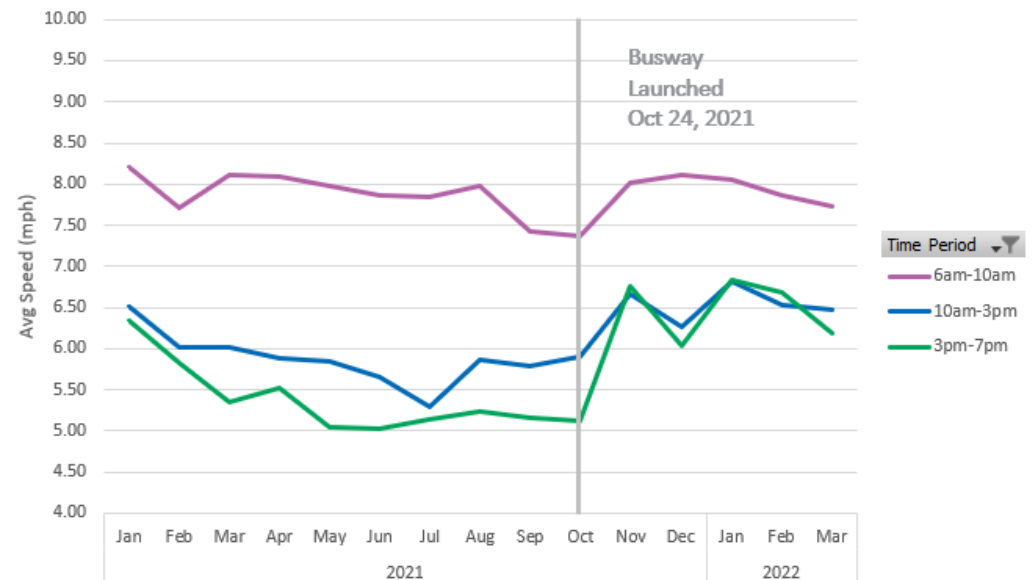
Bus Speed Trends – Jamaica Avenue

- Busway launch has reversed 2021 trend of declining bus speeds

Jamaica Av (WB) Monthly Average Speeds



Jamaica Av (EB) Monthly Average Speeds



Source: MTA

Bus Speeds – Jamaica Avenue

- Greatest bus speed gains are in the westbound direction
- Compared to 2019, bus speeds are over 12%-18% faster in the AM and PM peaks
- Saturday speed gains are concentrated in the midday and PM hours

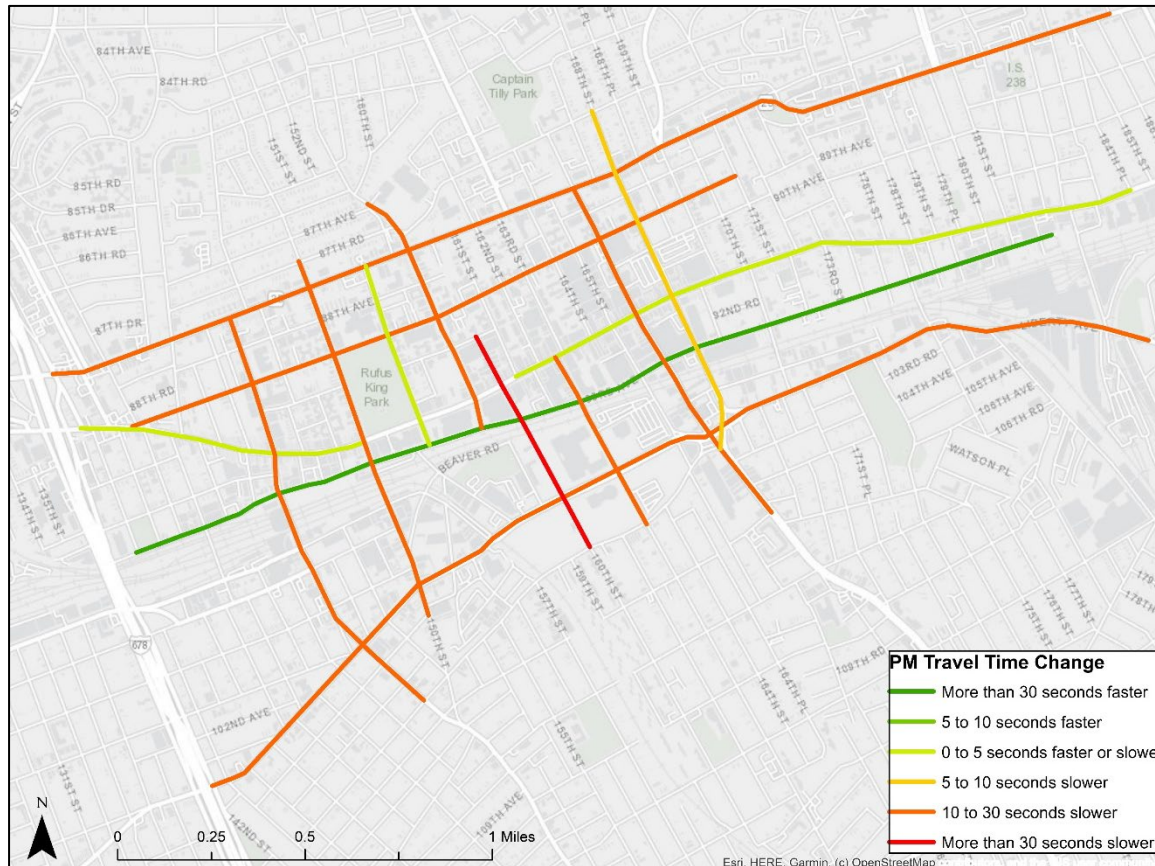
Jamaica Ave Busway - Percentage Speed Change Pre-Busway and Post-Busway (May 2019 vs. May 2022)

Time Period	Eastbound			Westbound		
	Weekday Speed Change	Saturday Speed Change	Sunday Speed Change	Weekday Speed Change	Saturday Speed Change	Sunday Speed Change
AM Peak (6-10 AM)	+12%	+3%	+0%	+17%	+9%	+4%
Midday (10AM-3PM)	+12%	+11%	+1%	+18%	+15%	+5%
PM Peak (3-7PM)	+15%	+9%	+8%	+17%	+11%	+7%
Late PM (7-10PM)	+4%	+12%	+3%	+13%	+15%	+8%
Overnight (10PM-6AM)	+4%	+4%	+6%	+6%	+8%	+12%
Daily	+8%	+7%	+4%	+12%	+11%	+8%

Source: MTA

PM Peak Vehicular Travel Times in Jamaica

Pre-implementation compared to Post-implementation



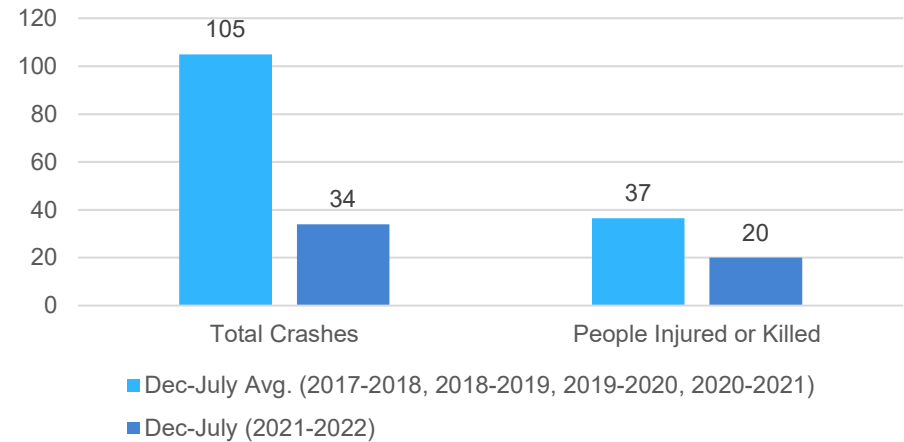
- Travel times on parallel routes (89th Ave, Hillside Ave, and Liberty Ave) increased from 15-30 seconds.
- Travel times on all cross-streets increased less than 30 seconds, except for 160th St with a 36 second increase.

Source: Inrix Data

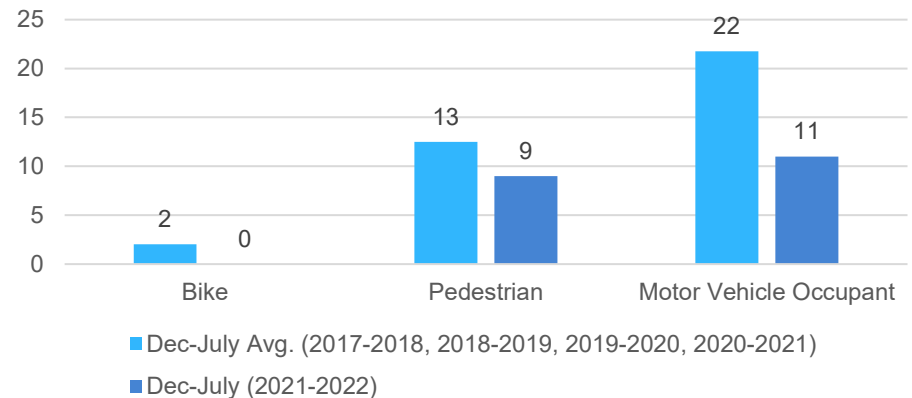
Safety – Jamaica Avenue

- Jamaica Ave has seen a reduction in crashes and injuries since busway launch.
 - Total crashes down 68%
 - People injured or killed down 45% (60% decrease for serious injuries)
 - -100% for cyclists
 - -28% for pedestrians
 - -49% for motor vehicle occupants

Crashes Before/After Busway Launch
Jamaica Avenue



Yearly Traffic Injuries Pre/Post
Implementation
Jamaica Avenue



Source: NYPD Crash Data

Door-to Door Business Outreach

March 21 & 25, 2022

- DOT's Street Ambassadors went door-to-door on Jamaica Ave to hear concerns about the Busway from the business community
- **Businessowner concerns:**
 - Difficult to receive deliveries due to lack of commercial loading, unpredictable delivery times, and cars with placards blocking loading zone spaces
 - Street vendors and dollar vans taking loading space
 - Inconvenient to access busway via taxi
 - Merchants felt business revenue and customer traffic has suffered



Pedestrian Survey

April 18 – 22, 2022:

- DOT conducted on-street outreach with pedestrians on Jamaica Ave to gather feedback on their experience with the Busway

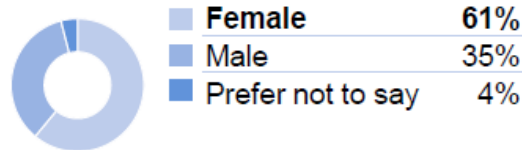


Pedestrian Survey

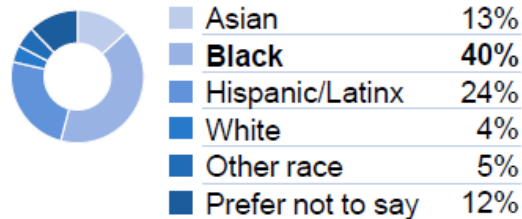
Respondent Demographics:

- 62% of respondents lived or worked in Jamaica
- 61% of respondents relied on the bus as their main form of transportation
- Shopping was the most common reason for their visit to Jamaica Ave
- 80% of people were visiting Retail, Food/beverage, and service businesses

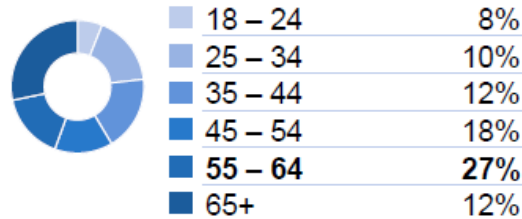
Gender



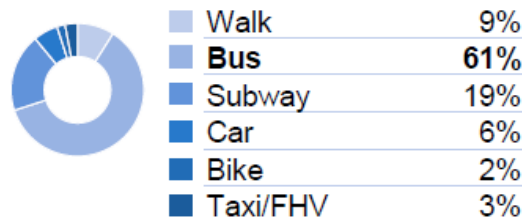
Race



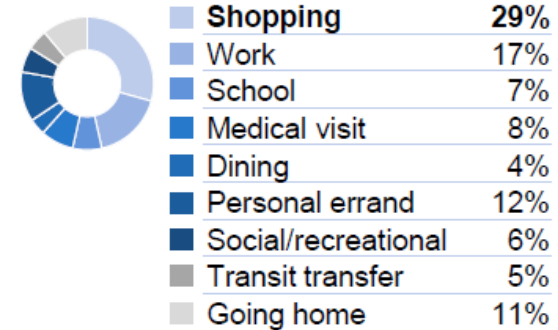
Participant Age



Typical Transportation Mode(s)



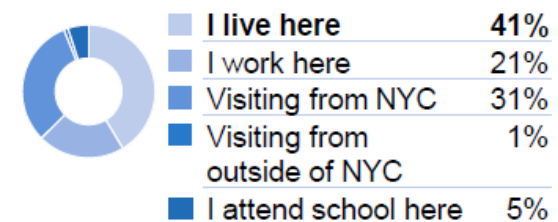
What brings you to Jamaica Ave today?



Which type of businesses do you frequent on Jamaica Ave?



Relationship to Jamaica Ave

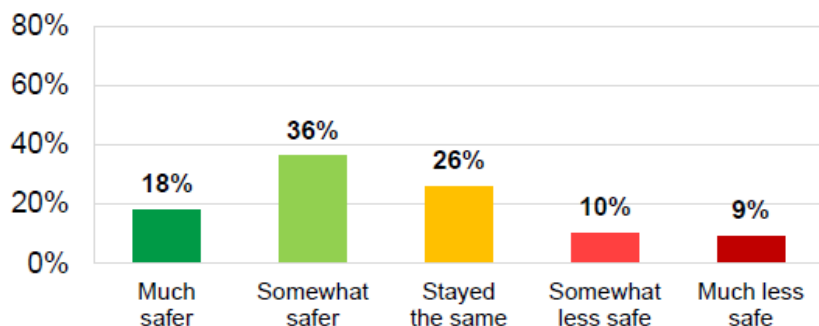


Pedestrian Survey

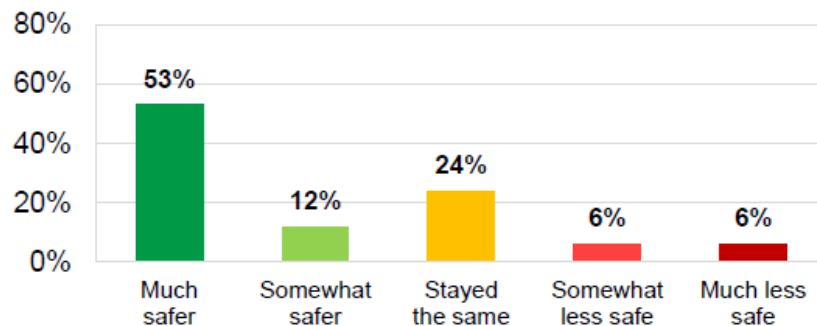
Experience crossing down Jamaica Ave feels...



For those who identified as Pedestrians



For those who identified as seniors (62+) and persons with disabilities



Bus Trips and Service along Jamaica Ave...

Bus service feels...	<i>More frequent</i>	<i>Stayed the same</i>	<i>Less frequent</i>	<i>I don't know</i>
	57%	31%	10%	2%
Bus travel is...	<i>Faster</i>	<i>Stayed the same</i>	<i>Slower</i>	<i>I don't know</i>
	55%	30%	11%	4%