



HUDSON MANOR TERRACE W 236 ST TO W 239 ST

School Safety Improvements

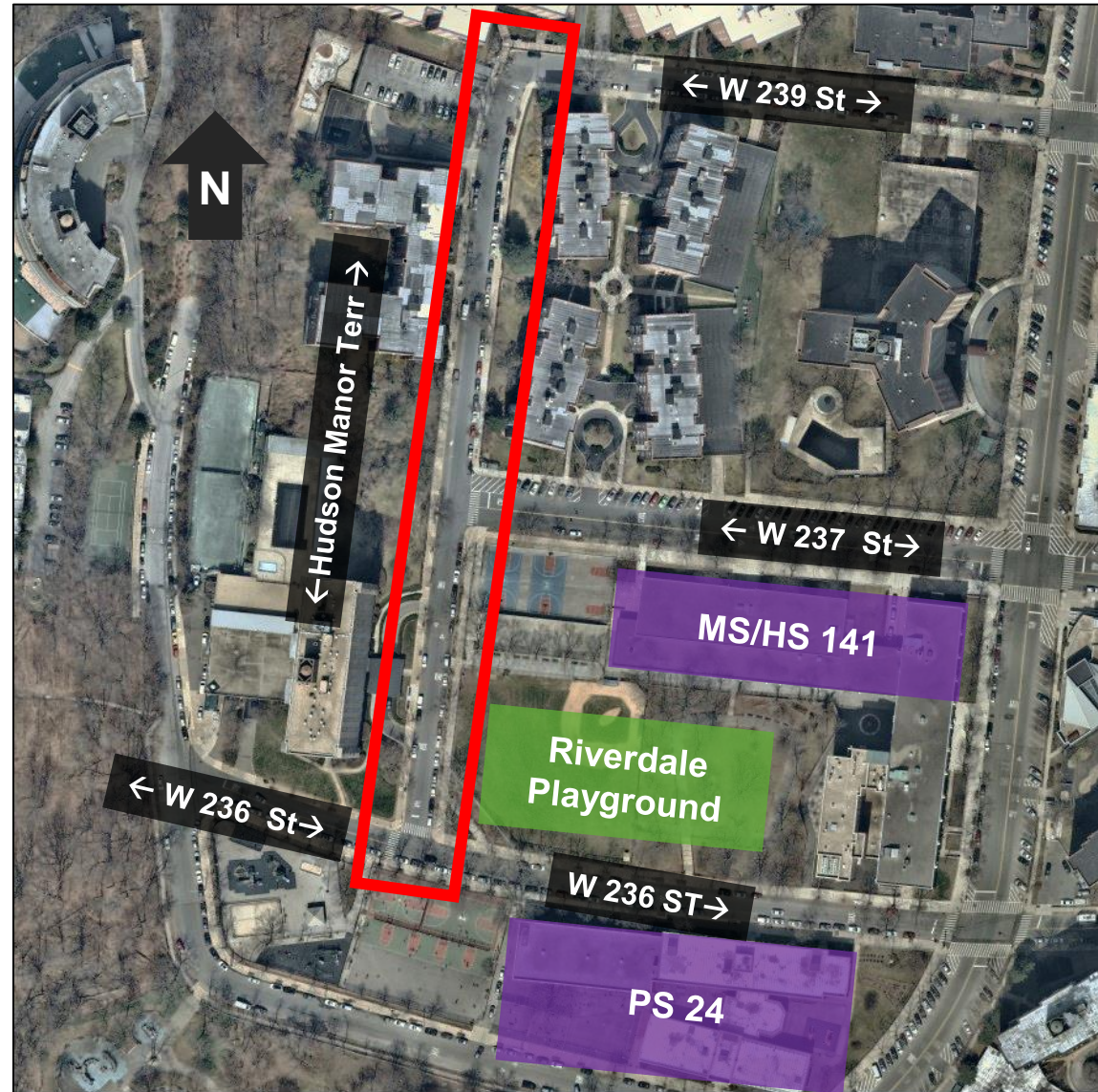
Presentation to CB 8 – March 21, 2019



Hudson Manor Terrace, W 236 St to W 239 St

Project Area

- Requests for new crosswalks and all-way stop controls at W 236 St, W 237 St, and W 239 St by community members and former State Senator
- Project area used by students accessing:
 - MS/HS 141
 - PS 24
- Adjacent to the Riverdale Playground, Spuyten Duyvil Playground, Raoul Wallenberg Forest and Seton Park



Hudson Manor Terrace, W 236 St to W 239 St

Existing Conditions

- Poor visibility and pedestrians crossing at unmarked crosswalks at W 236 St, W 237 St, and W 239 St
- Intersections do not meet warrants to add all-way stop or traffic signal controls



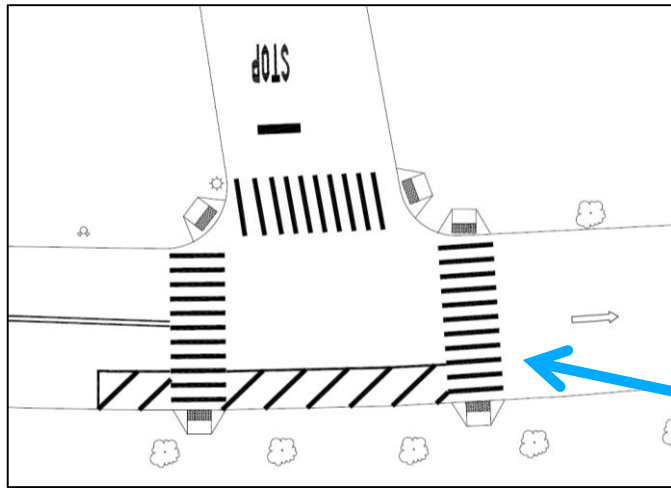
Hudson Manor Terrace, W 236 St to W 239 St

Proposal: Enhanced Crossing Treatment



Hudson Manor Terrace, W 236 St to W 239 St

Proposal Detail at W 236 St

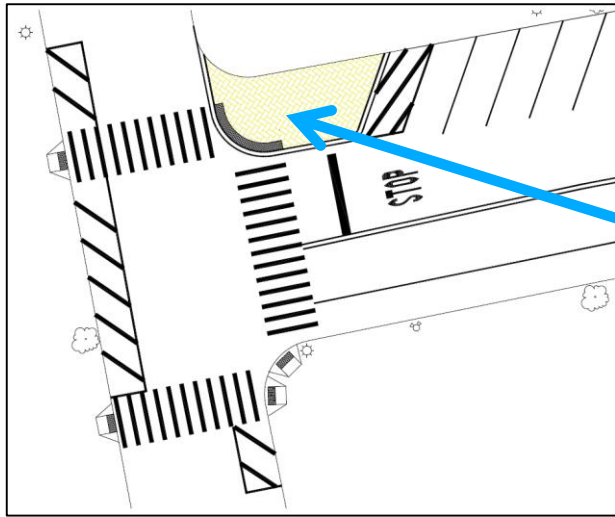


- Add an enhanced crosswalk in the east leg
- Add daylighting the top of the intersection to improve visibility of crossing pedestrians



Hudson Manor Terrace, W 236 St to W 239 St

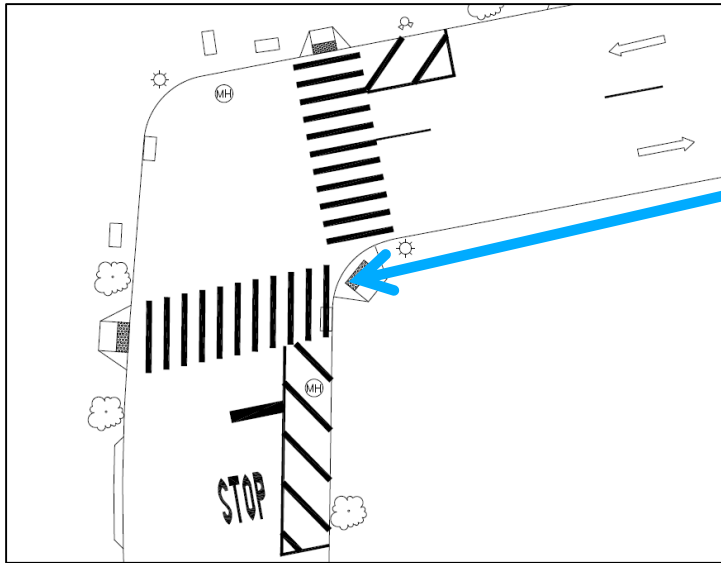
Proposal Detail at W 237 St



- Add enhanced crossings at the north and south leg at W 237 St
- Add painted curb extension at W 237 St to shorten crossing distances
- Add daylighting at the top of the intersection to improve visibility of crossing pedestrians

Hudson Manor Terrace, W 236 St to W 239 St

Proposal Detail at W 239 St

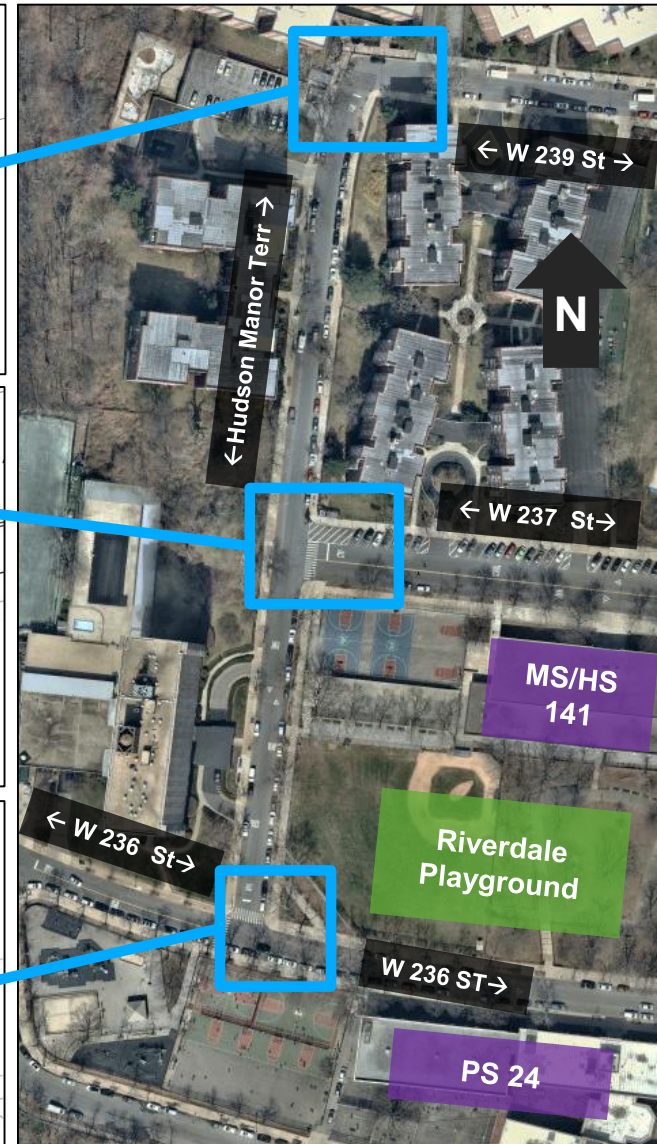
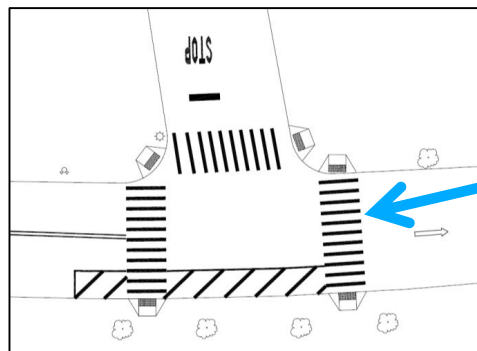
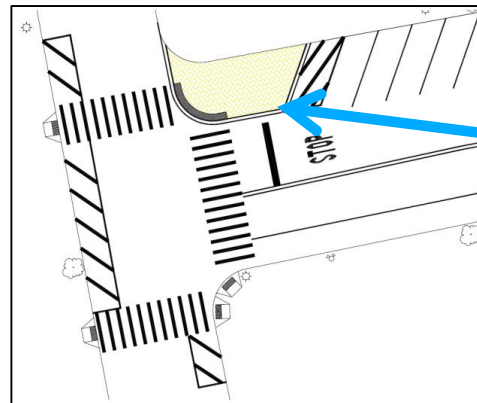
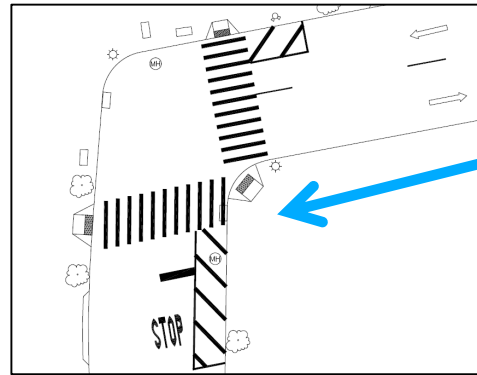


- Add enhanced crossings in the south and east legs of W 239 St
- Add daylighting to improve visibility of crossing pedestrians

Hudson Manor Terrace, W 236 St to W 239 St

Proposal Summary

- Add enhanced crossings at W 236 St, W 237 St, and W 239 St
- Add painted curb extension at W 237 St shorten crossing distances
- Enhanced crossings, daylighting, and curb extension improve visibility of crossing pedestrians



Thank You!

Questions?



Contact: NYCDOT Bronx Borough Commissioner's Office – (212) 748-6680



NYCDOT



nyc_dot



nyc_dot



NYCDOT