



# SOUTH BROOKLYN PEDESTRIAN SAFETY IMPROVEMENTS

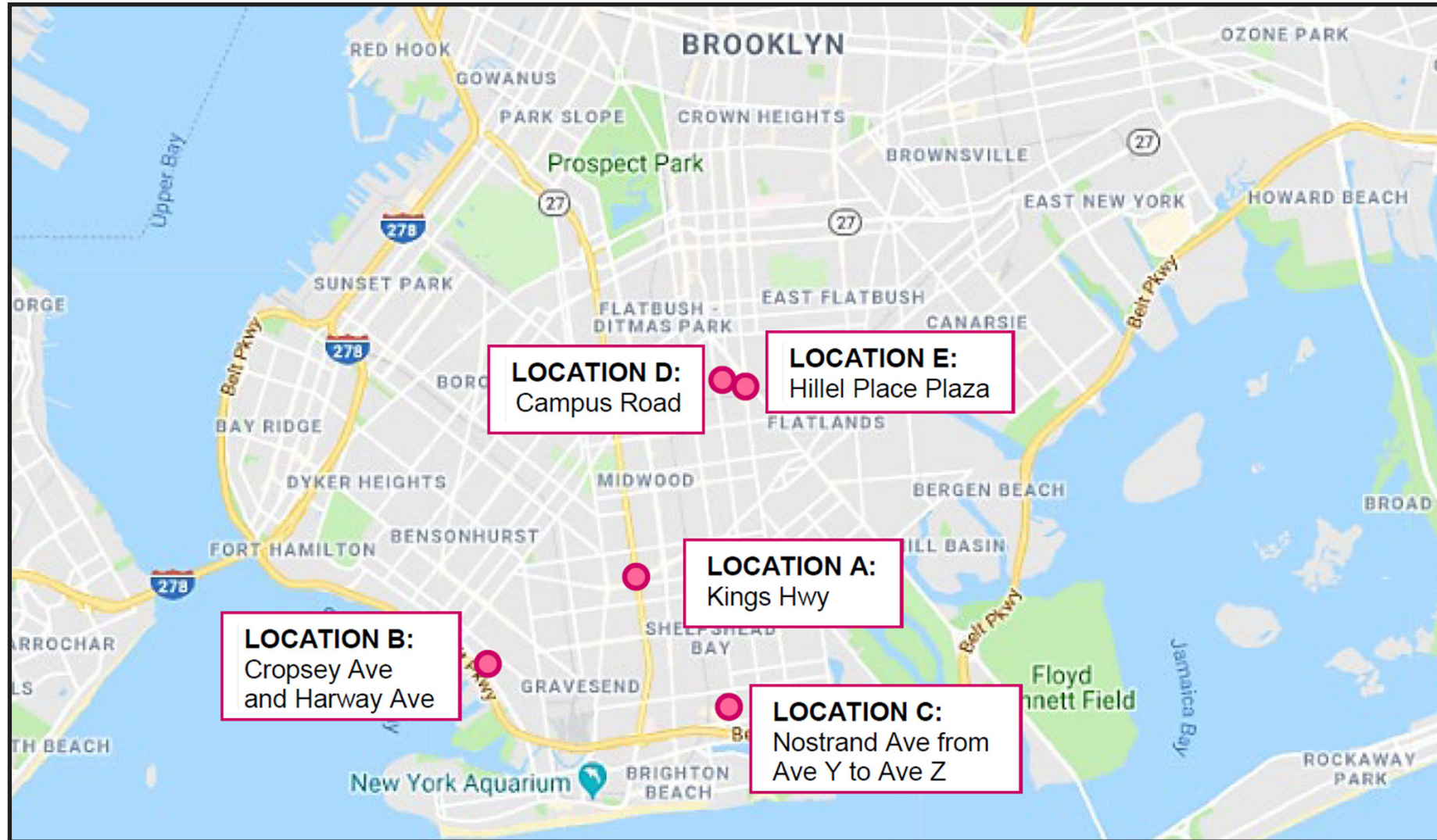
## BOROUGH OF BROOKLYN

PROJECT ID: HWK1673

COMMUNITY BOARD #14 PRESENTATION

# PROJECT LOCATIONS

## Proposed Safety Improvements at Five Targeted Locations



### GENERAL WORK INCLUDES:

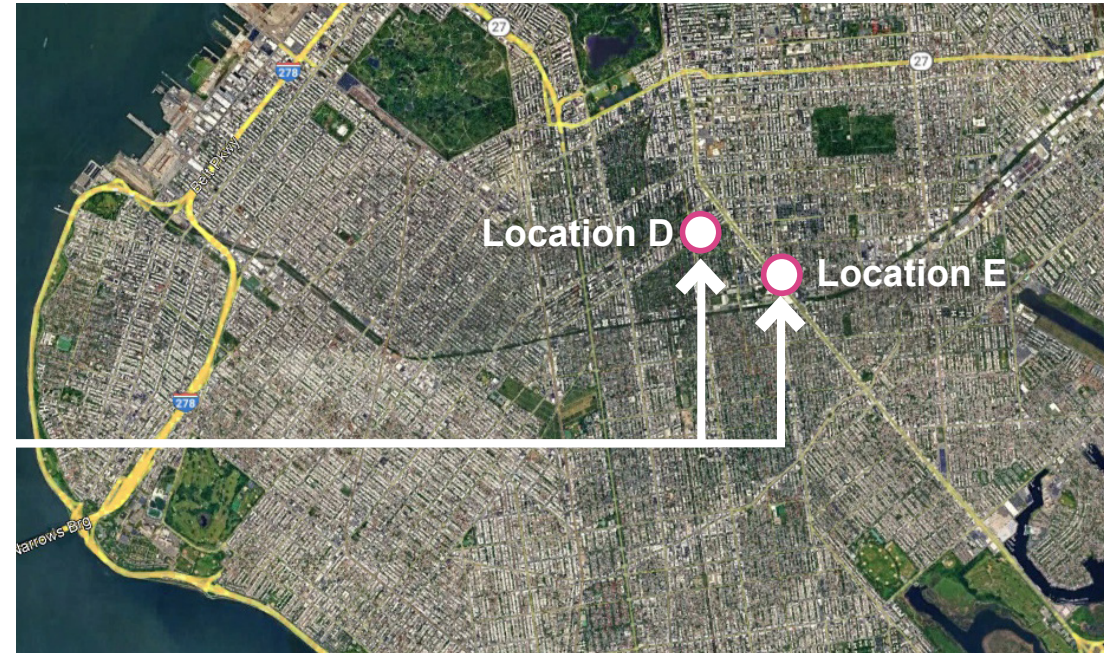
- Curb extensions
- Greenstreet triangle expansion
- Median tip and island construction
- Expanded median with new street trees
- Pedestrian island
- Raised intersections
- New permanent plaza
- ADA-compliant pedestrian ramps

# PROJECT LOCATIONS D & E



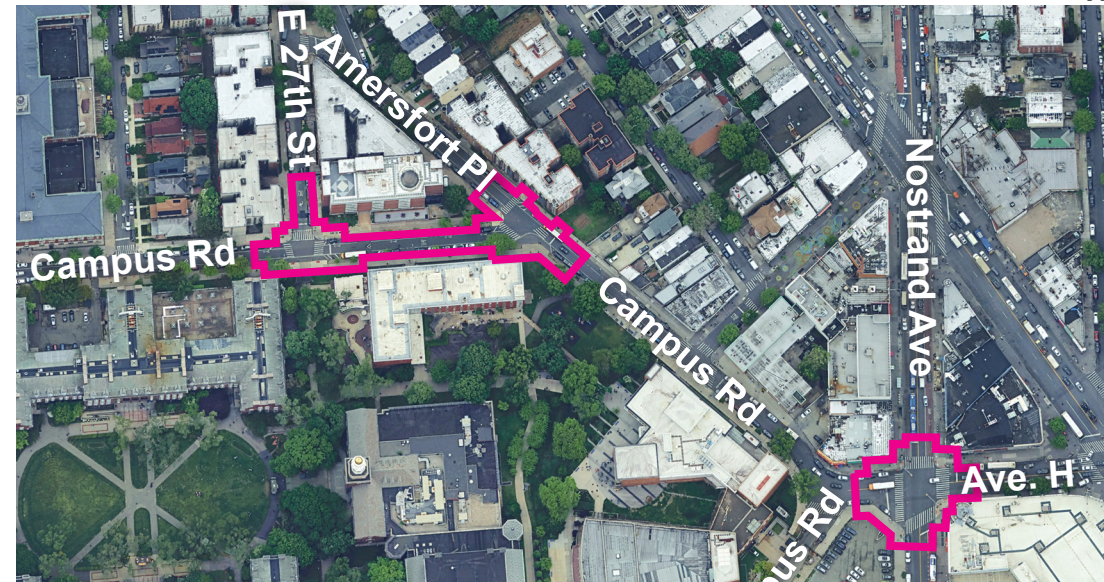
City

NTS



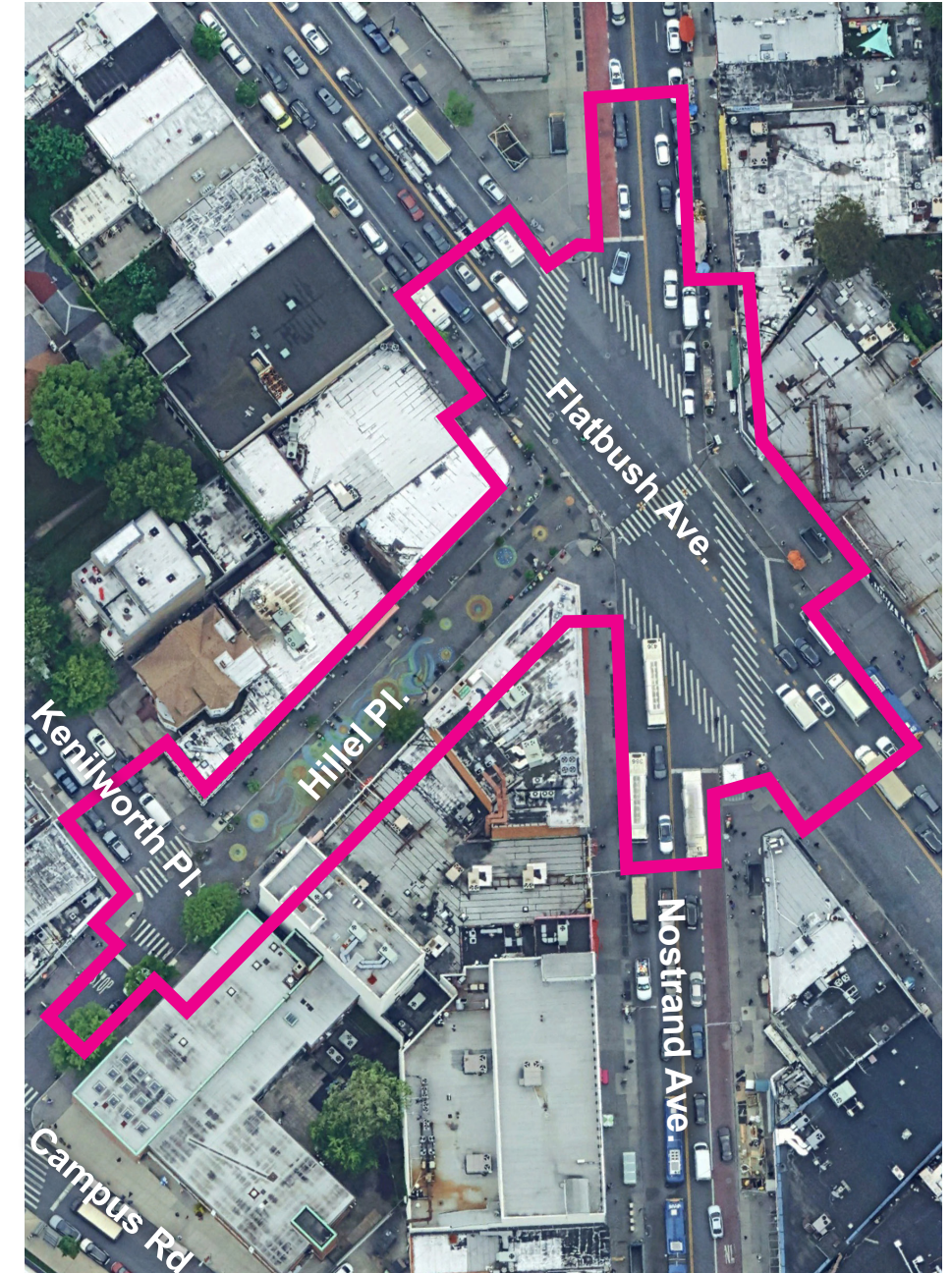
Borough

NTS



Site : Location D

0' 50' 100'



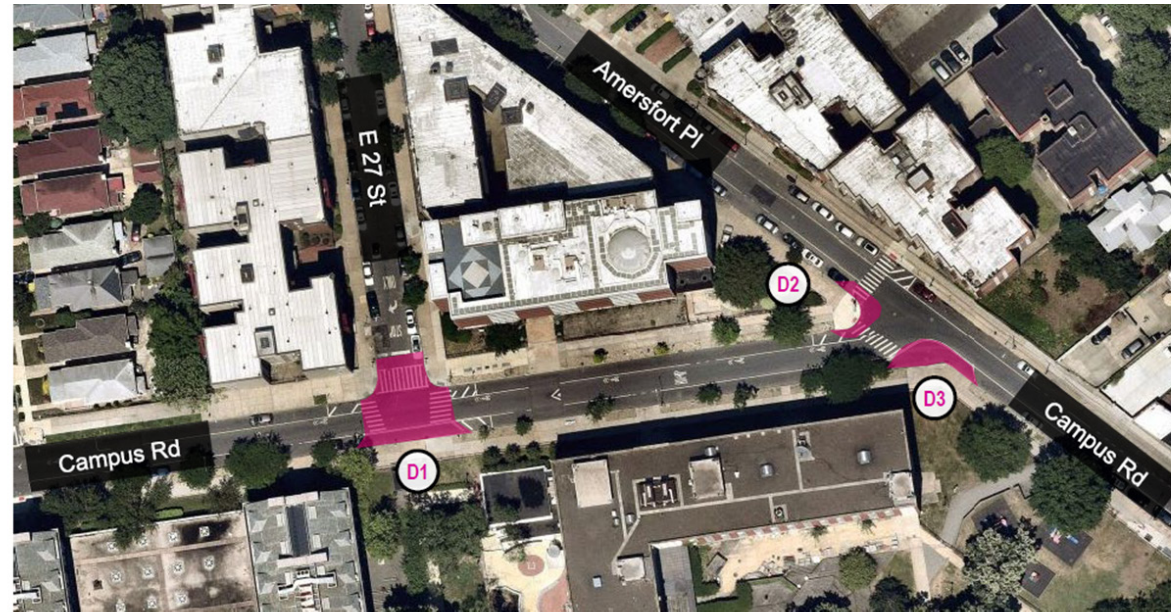
Site : Location E

0' 40' 80'

# EXISTING CONDITIONS - LOCATION D



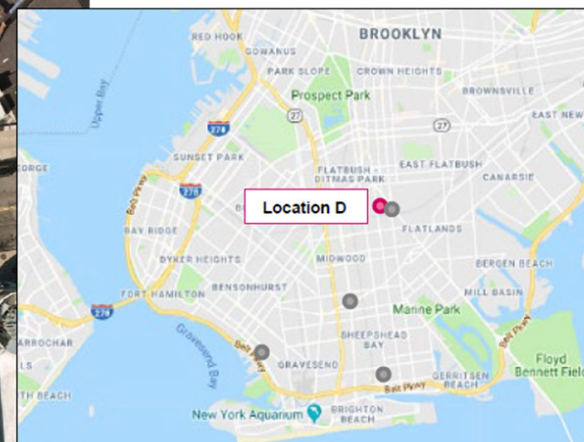
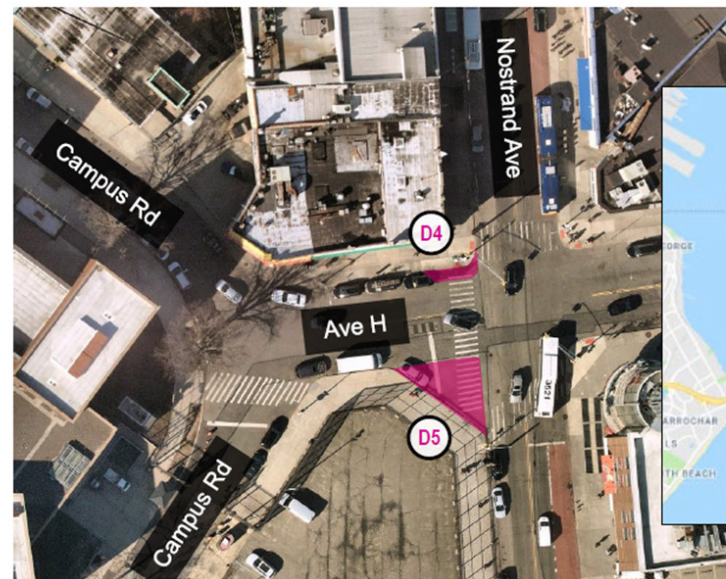
Location D: Campus Road at E 27th Street and Amersfort Place;  
Ave H and Nostrand Ave



After 2016 Street Improvement Project (SIP) implementation, Campus Road and E 27th Street, aerial view



After 2016 SIP implementation, Campus Road and Amersfort Place, aerial view



0' 25' 50' N

0' 25' 50' N



Nostrand Ave at Ave H, looking west

# EXISTING CONDITIONS - LOCATION D



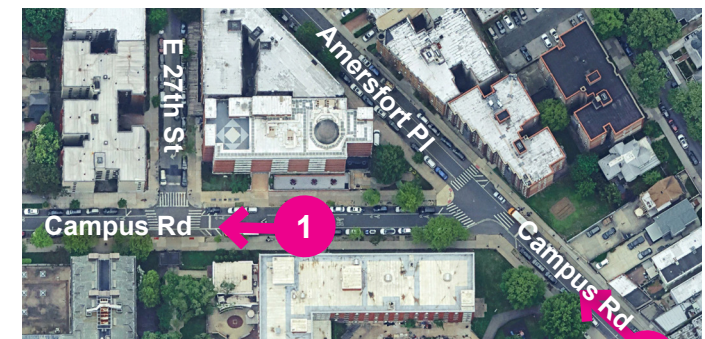
Joint Venture



1 - Campus Road and East 27 St.



2 - Campus Road and Amersfort Pl.



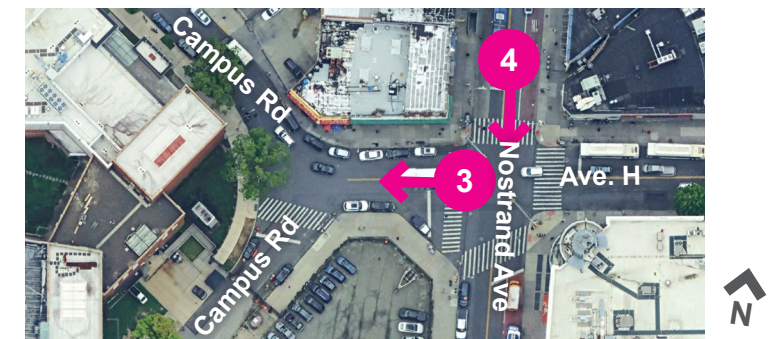
# EXISTING CONDITIONS - LOCATION D



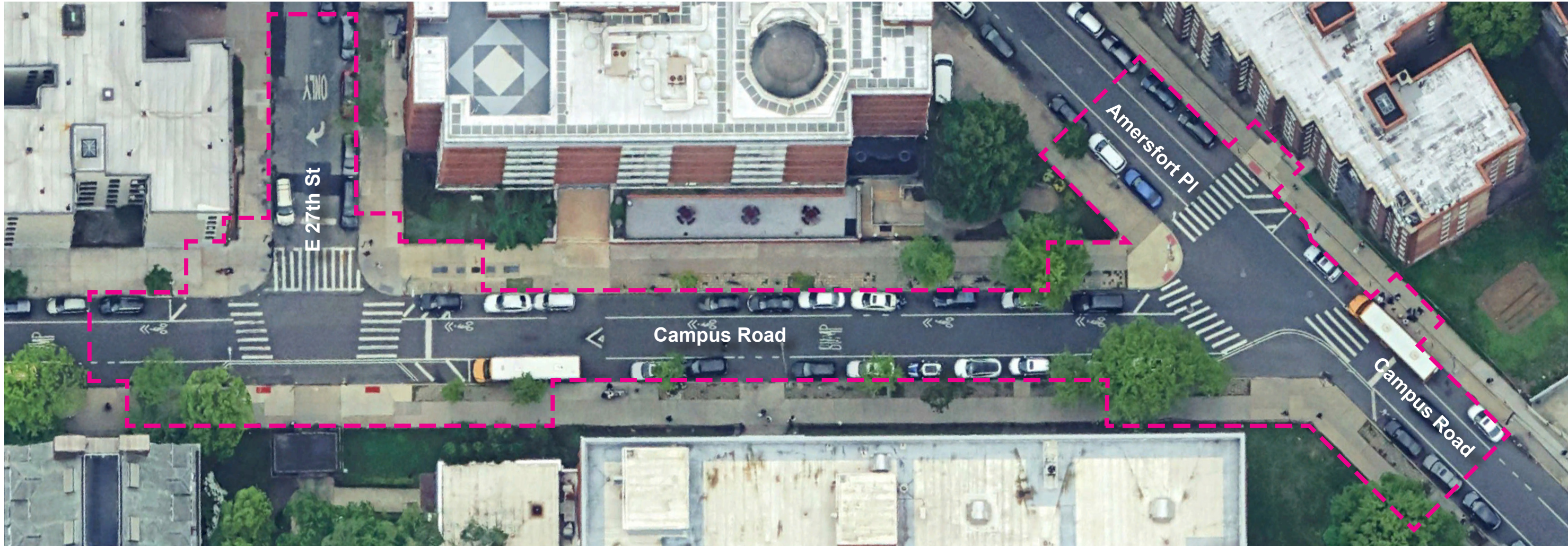
3 - Nostrand Ave. and Ave. H



4 - Nostrand Ave. and Ave. H



# EXISTING CONDITIONS - LOCATION D



## Legend

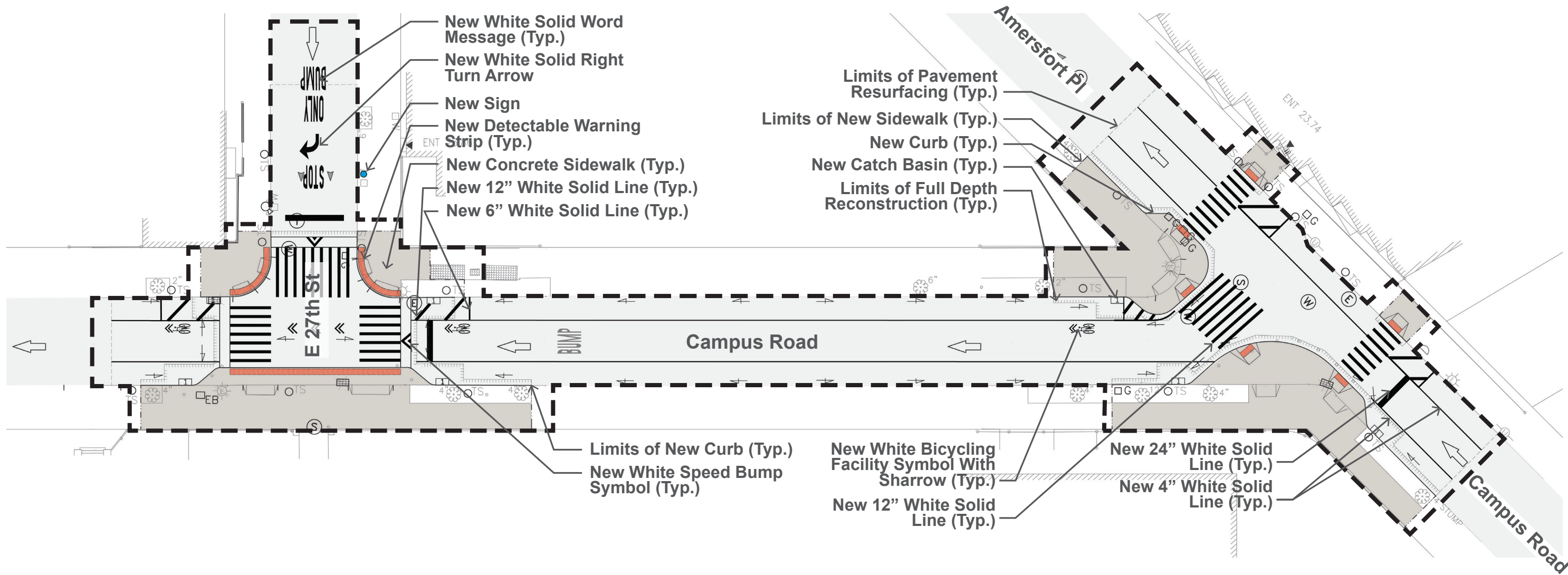
--- Project limit

## High Pedestrian Volumes from Adjacent Schools:

- Brooklyn College
- Midwood High School
- PS 152, PS K315
- Nearby transit lines



# PROPOSED CONDITIONS - LOCATION D



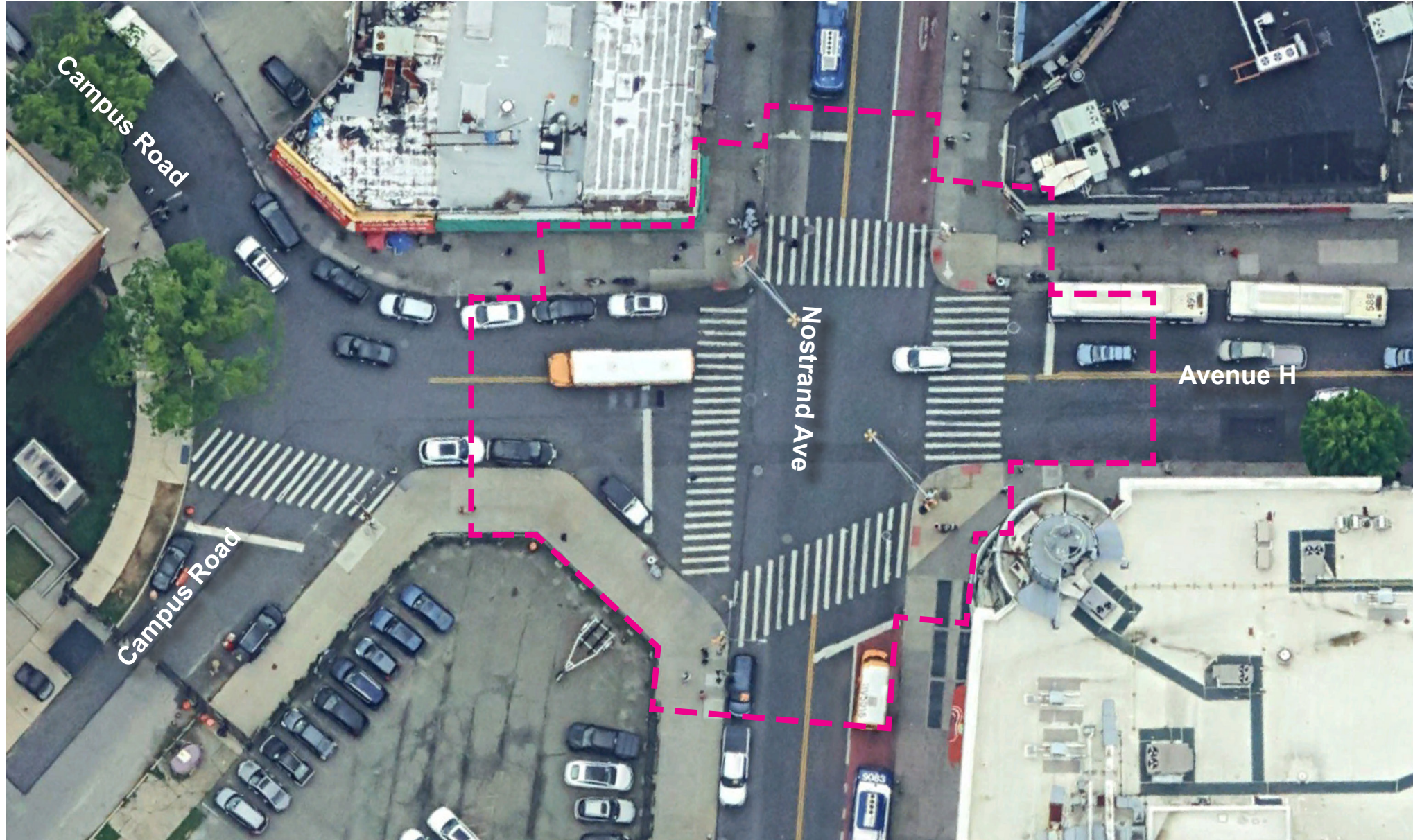
**Legend**

- Project limit
- Sign

- Safety Improvements:**
- Revise to build out of the top of the T-curb extension
  - Raised intersection
  - Corner curb extensions
  - Traffic calming
  - ADA-compliant pedestrian ramps
  - Reduce crossing distances



# EXISTING CONDITIONS - LOCATION D



## Legend

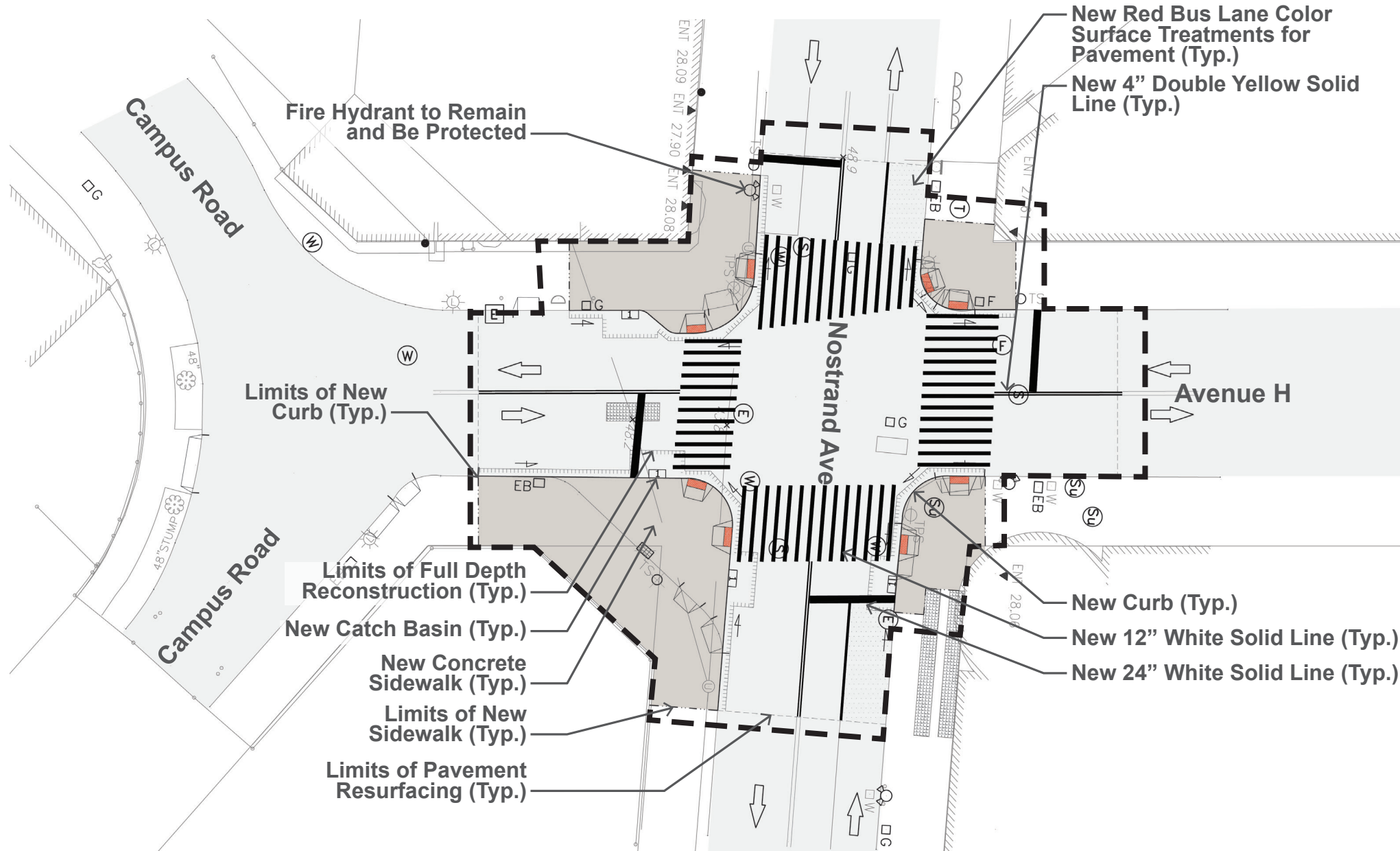
--- Project limit

## High Pedestrian Volumes from Adjacent Schools:

- Brooklyn College
- Midwood High School
- PS 152, PS K315
- Nearby transit lines



# PROPOSED CONDITIONS - LOCATION D



## Legend

--- Project limit

## Safety Improvements:

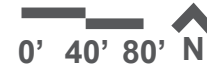
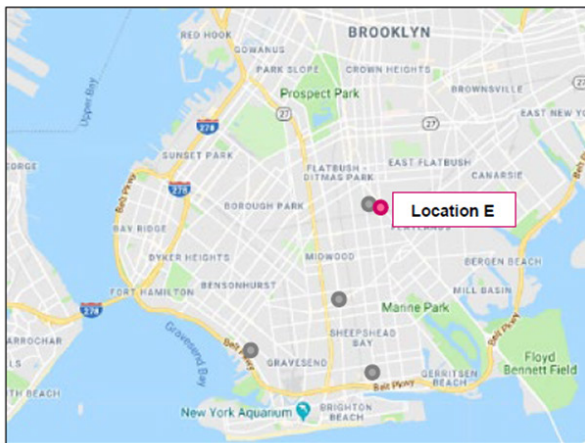
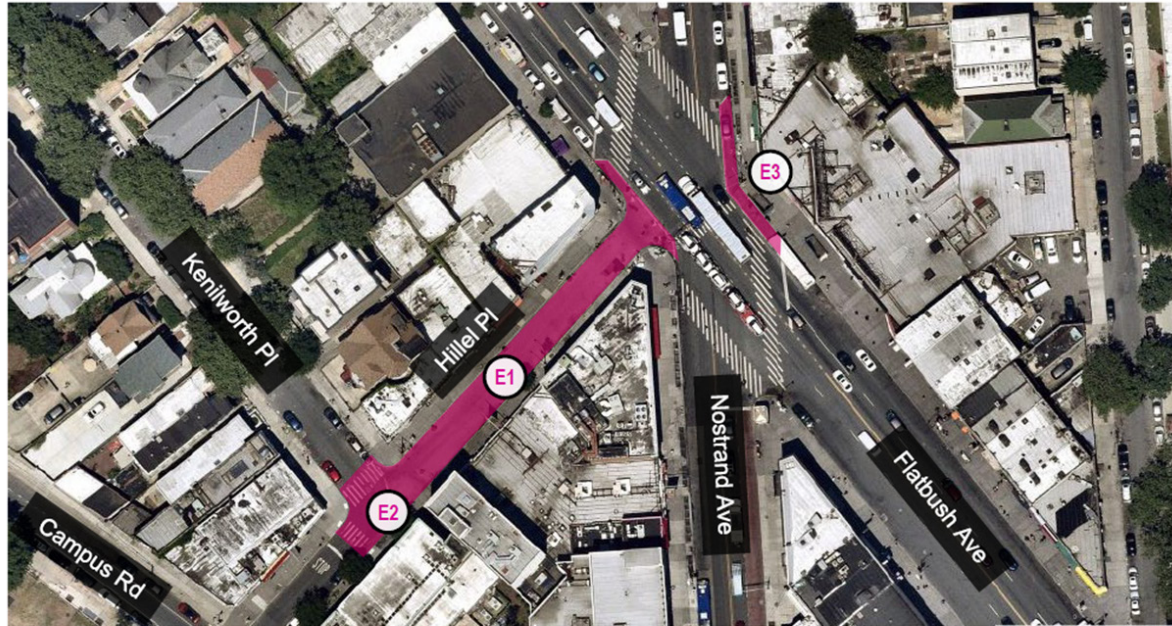
- Corner curb extensions
- Normalize Avenue H intersection
- Traffic calming
- ADA-compliant pedestrian ramps
- Reduce crossing distances



# EXISTING CONDITIONS - LOCATION E



Location E: Hillel Place Plaza



Hillel Place Plaza SIP – Looking Southwest



Painted Curb Extension – Flatbush and Nostrand (Southwest Corner)



Hillel Place Plaza SIP – Looking Northeast



Painted Curb Extension – Flatbush and Nostrand (Northeast Corner)

# EXISTING CONDITIONS - LOCATION E



1 - Subway entrance



2 - Plaza entrance with boulders, stepped planters and flexible bollards at the front



# EXISTING CONDITIONS - LOCATION E



3 - DOT stepped planters located throughout the site



4 - Empty tree pit with granite block



# EXISTING CONDITIONS - LOCATION E



Joint Venture



5 - Locked tables and chairs located along the site



6 - A shade structure at the end of the street, approximately 24 feet wide by 80 feet long, accompanied by a mural graphic on the asphalt paving



# EXISTING CONDITIONS - LOCATION E



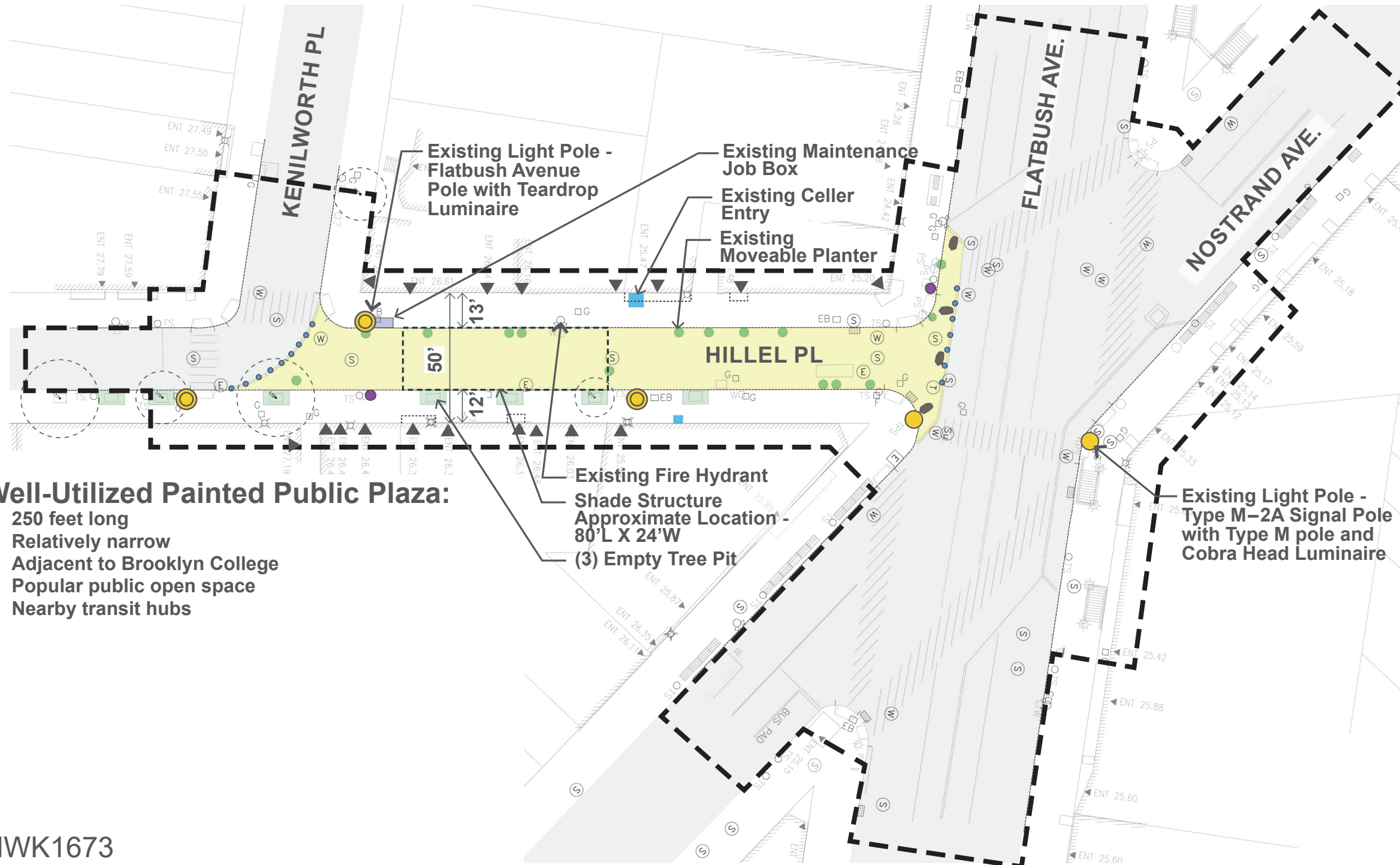
7 - Storage box at the street corner



8 - Flexible bollards at the end of the plaza, about half missing; Flatbush Avenue light pole in front



# EXISTING CONDITIONS - LOCATION E



## Legend

- Project limit
- Building Egress
- Existing Tree to Remain
- Existing Cobble-Lined Tree Pit
- Existing Moveable Planter
- Existing Flexible Bollard
- Existing Light Pole - Type M-2A Signal Pole with Type M pole and Cobra Head Luminaire
- Existing Light Pole - Flatbush Avenue Pole with Teardrop Luminaire
- Existing Waste Receptacles
- Existing Granite Block
- Existing Catch Basin
- Building Overhang

### Well-Utilized Painted Public Plaza:

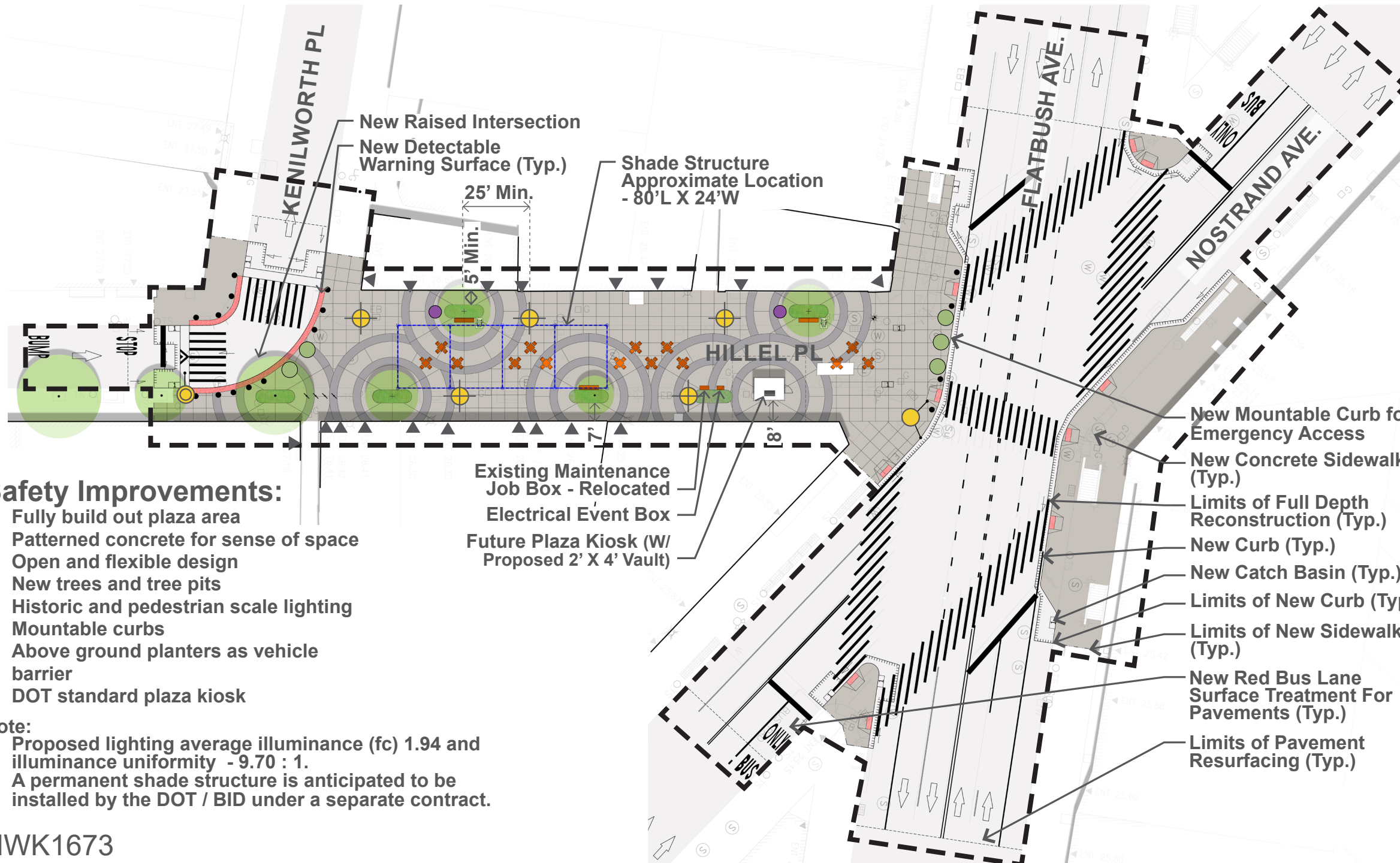
- 250 feet long
- Relatively narrow
- Adjacent to Brooklyn College
- Popular public open space
- Nearby transit hubs

Existing Fire Hydrant  
 Shade Structure  
 Approximate Location -  
 80' L X 24' W  
 (3) Empty Tree Pit

Existing Light Pole -  
 Type M-2A Signal Pole  
 with Type M pole and  
 Cobra Head Luminaire



# PROPOSED CONDITIONS - LOCATION E



- ### Legend
- Project limit
  - Building Egress
  - Standard DOT Unpigmented Concrete Pavement
  - Standard DOT Pigmented (Dark) Concrete Pavement
  - Existing Tree
  - + Proposed Tree
  - Planter with Stainless Steel Planting Edge
  - DOT Step Planter - Relocated
  - DOT Pipe Bollard
  - Existing Light Pole - Type M-2A Signal Pole with Type M pole and Cobra Head Luminaire
  - Existing Light Pole - Flatbush Avenue Pole with Teardrop Luminaire
  - + NYC DOT Flushing Meadows Pole + LED Luminaire
  - x Movable Table and Chair
  - DOT "Citybench" - Backed
  - DOT "Cityrack"
  - DOT Waste Receptacles - Relocated

## Safety Improvements:

- Fully build out plaza area
- Patterned concrete for sense of space
- Open and flexible design
- New trees and tree pits
- Historic and pedestrian scale lighting
- Mountable curbs
- Above ground planters as vehicle barrier
- DOT standard plaza kiosk

### Note:

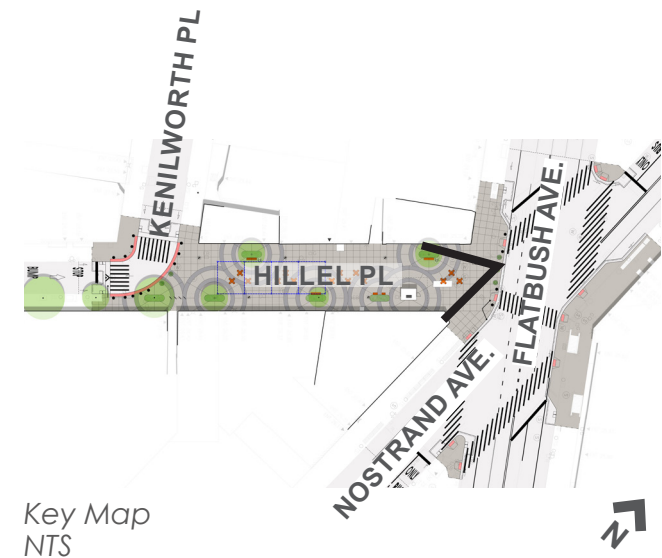
1. Proposed lighting average illuminance (fc) 1.94 and illuminance uniformity - 9.70 : 1.
2. A permanent shade structure is anticipated to be installed by the DOT / BID under a separate contract.



# RENDERING



Note:  
Shade structure shown is anticipated to be reinstalled by others separate from this capital project.



# SECTION A-A'



Note:  
Shade structure shown is anticipated to be reinstalled by others separate from this capital project.



30' X 30' Staging Area



Key Map  
NTS



7' to 8'  
Store Frontage

9' x 12'  
Plaza Kiosk

15' Clearance  
FDNY Vehicle Outrigger

20'  
Program Plaza - DOT Standard  
Unpigmented / Pigmented Concrete

5'  
Tree Bed

Min. 5'  
Store Frontage

# PAVING MATERIALS AND SITE FURNISHINGS



*Precedent Image: Corona Plaza (NYC DOT) - Two-toned concrete paving design precedent*



**NYC DOT Standard Unpigmented Concrete**



**NYC DOT Standard Pigmented Concrete-Dark**



**NYC DOT Flushing Meadows Pole + LED Luminaire With Integrated Electrical Outlet**



**NYC DOT CityBench, Backed**  
Dimensions: 7'-6" Lg. x 20.5" Dp.



**Stainless Steel Planting Edge**

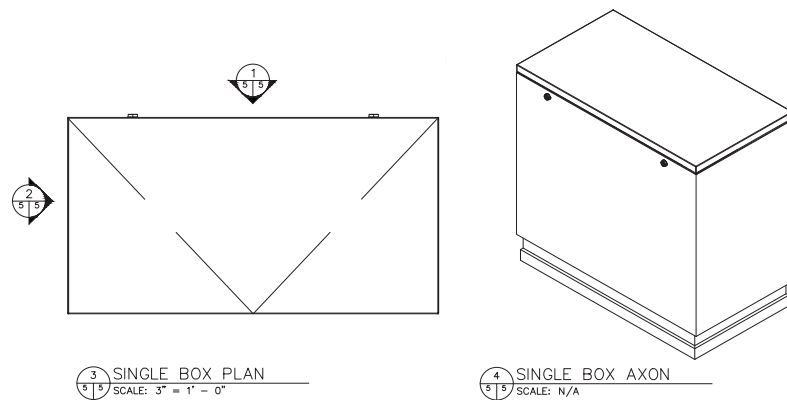
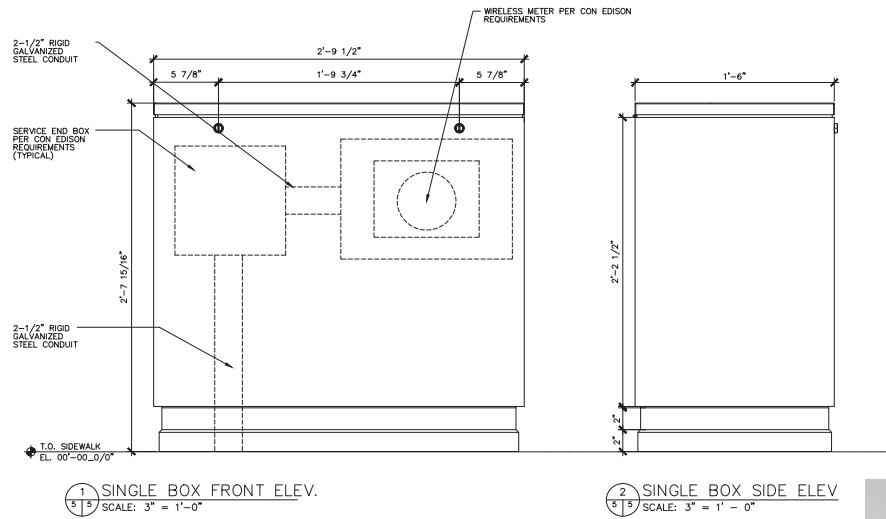


**NYC DOT CityRack**  
Dimension: 33.7" diameter  
Cast Metal



**Planting Buffer (In Planters / At Grade)**  
DOT Step Planter

# PAVING MATERIALS AND SITE FURNISHINGS



## Electrical Event Box for panel board and power receptacle outlets (with top loading)

Size: 2'-9" Wd. x 1'-6" Dp. x 2'-8" Ht.  
Finish: Stainless Steel  
Mounting: Concrete Base

HWK1673



Provided for Reference to Material Finishes Only



## Moveable Tables + Chairs

Manufacturer: Landscape Forms  
Product: Parc Centre Line  
Color(s): Equal Mix of Buttercup, Cranberry & Grass  
Chair Dimensions: 22" Wd. x 21" Dp. x 33" Ht.  
Table Dimensions: 28" Square x 30" Ht.



## Maintenance Job Box

Dimension: 42"Wd. x 19"Dp. x 23 3/8"Ht.



## NYC DOT Pipe Bollard

Dimension: 37 5/8" Ht., 5 9/16" diameter  
Color: Black



## Relocated NYC DOT Standard Waste Receptacles

Manufactured: Maglin Site Furniture  
Product: 600 Series  
Dimensions: 22 3/8" Dia. x 36 1/4" Ht.  
Capacity: 32 Gal., Standard

---

# PROJECT SCHEDULE

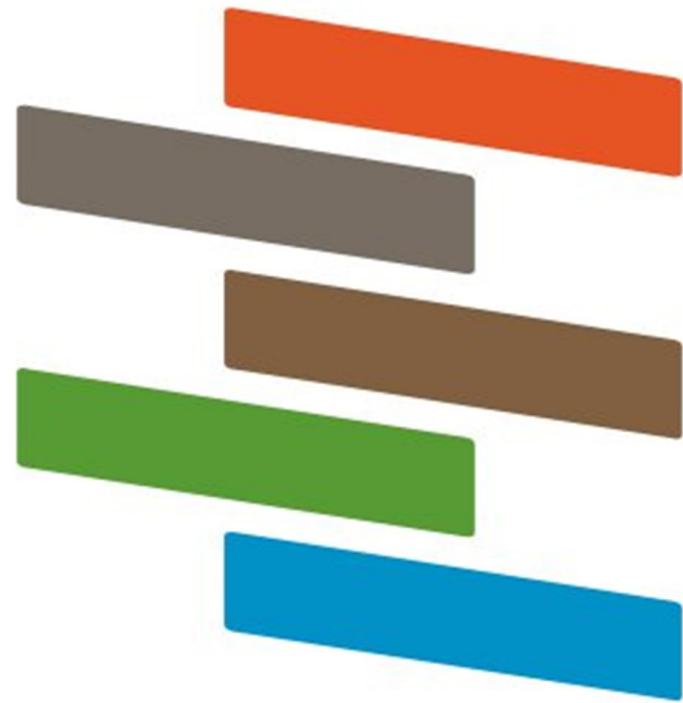


- Anticipated Design Completion: August 2027
- Anticipated Construction Start: Summer 2028
- Anticipated Construction Completion: End of 2030



# ISI ENVISION SUSTAINABILITY FRAMEWORK

# ISI ENVISION SUSTAINABILITY FRAMEWORK



ENVISION

- Framework that includes 64 sustainability and resilience indicators organized around 5 categories
- Address areas such as human well being, mobility, community development, collaboration, and resilience resource conservation and carbon reduction
- Applicable to a wide variety of infrastructure assets



## Energy

Distribution  
Hydroelectric  
Coal  
Natural Gas  
Wind  
Solar  
Biomass



## Water

Treatment  
Distribution  
Capture / Storage  
Stormwater  
Flood Control  
Nutrient Management



## Waste

Solid waste  
Recycling  
Hazardous  
Waste  
Collection & Transfer



## Transportation

Airports  
Roads / Highways  
Bikes / Pedestrians  
Railways  
Transit  
Ports  
Waterways



## Landscape

Public Realm  
Parks  
Ecosystem Services  
Natural Infrastructure  
Environmental Remediation



## Information

Telecom  
Cables  
Internet  
Phones  
Data Centers  
Sensors

# ENVISION CATEGORIES AND LEVEL OF ACHIEVEMENT



**Quality of Life**

Wellbeing, Mobility, Community



**Leadership**

Collaboration, Planning, Economy



**Resource Allocation**

Materials, Energy, Water



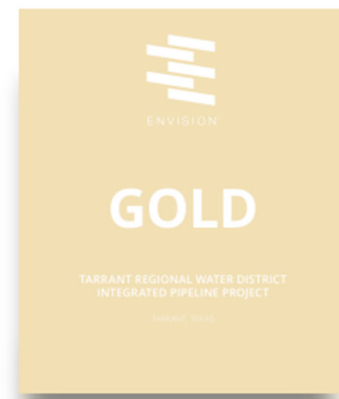
**Natural World**

Siting, Conservation, Ecology



**Climate & Resilience**

Emissions, Resilience





# COMMUNITY OUTREACH

# COMMUNITY OUTREACH DURING CONSTRUCTION

Stakeholder and community outreach activities will continue throughout the construction phase, to alert you of upcoming construction work, advisories, completion of milestones and activities, as well as community engagement events:

## COMMUNITY OUTREACH PROCESS:



# COMMUNITY OUTREACH



## Community Construction Liaison (CCL) responsibilities are as follows:

- First point of contact, maintain on-site presence and communications.
- Identify, resolve, and/or proactively address issues and inquiries.
- Distribute advisories and weekly construction activities newsletter.
- Provide 72-hour and 24-hour (confirmation or cancellation) advisories for work impacts by email and door to door.
- Attend community board monthly DSC meetings.

# COMMUNITY CONSTRUCTION LIAISON INVOLVEMENT



## Keeping You Informed.

The on-site CCL works directly with the project team. CCL will address community concerns, respond to inquiries, attend meetings, as needed, as well as distribute project related materials to keep the community informed and notified.

### PROJECT INFORMATION CARD (PIC)



### ADVISORIES

Department of Design and Construction  
 OFFICE OF COMMUNITY OUTREACH AND NOTIFICATION  
[www.nyc.gov/ddc](http://www.nyc.gov/ddc)  
[twitter.com/nycddc](mailto:twitter.com/nycddc)

## COMMUNITY ADVISORY

PROJECT NAME: Installation of Non-Standard Pedestrian Ramps - Manhattan  
 PROJECT#: HWPR19MC2      BOROUGH: Manhattan      ADVISORY ISSUED: 12-12-2025

# No Parking

## Modify Catch Basin and Install Chute Connections

**Mon, Dec 15 thru Fri, Dec 19, 2025**  
**Work Hours: 7:00 AM - 3:30 PM**

**Locations include northwest corners of**  
 - Avenue A and East 3rd Street  
 - 1st Avenue and East 3rd Street

Curbside parking restrictions in effect near work zones; vehicles will be towed. Please observe posted signage. These temporary restrictions support ramp improvements. Anticipate machinery, noise, and dust during work hours.

If you have any questions, concerns, or would like to learn more about this DDC Project, please call the Community Construction Liaison:

Elizabeth (Liz) Baptiste, CCL  
 Field Office: 54 W 39th St, Suite 702  
 Office: 646-455-0623 Ext. 1  
 Cell: 908-307-0465  
 Email: [hwpr19mc2.ccl@gmail.com](mailto:hwpr19mc2.ccl@gmail.com)

During non-construction hours please contact 311 for non-emergency city services.

PLEASE NOTE: Due to unforeseen conditions (weather, bid conditions, etc.) it may become necessary to change some scheduled work locations and operations.

Eric Adams Mayor  
 Eduardo N. del Valle Acting Commissioner

### WEEKLY LOOK AHEAD BULLETIN

Department of Design and Construction  
 OFFICE OF COMMUNITY OUTREACH & NOTIFICATION

## WEEKLY CONSTRUCTION BULLETIN

08/06/18 - 08/10/18

Installation Water Main Extension and Replacements      PROJECT #: MED645      BOROUGH: MANHATTAN      DATE ISSUED: 08/06/18

The following is an anticipated work schedule for the upcoming week. However, due to unforeseen field and weather conditions, it may become necessary to change some scheduled work locations, operations and dates.

DATE	WORK HOURS	LOCATION	OPERATION
08/06/18 - 08/07/18	7:00 am - 4:00 pm	East Side of Brewery Between Grand Street and Broome Street	Excavation for the purpose of water main replacement.
08/07/18	7:00 am - 4:00 pm	South Side of West 1st Street Between 1st Ave and Washington Street	WPT work
08/08/18	6:00 am - 4:00 pm	East Side of Brewery Between Grand Street and Broome Street	Water shut down for the purpose of water main replacement.
08/09/18 - 08/10/18	7:00 am - 4:00 pm	South Side of West 1st Street Between 1st Ave and Washington Street	Clamping operation for the purpose of water main replacement.
08/09/18	7:00 am - 4:00 pm	East Side of Brewery Between Grand Street and Broome Street	Hoisting/Installation operations.
08/09/18 - 08/10/18	7:00 am - 4:00 pm	South Side of West 1st Street Between 1st Ave and Washington Street	Water Main Installation.

CE to Beate Rigo  
 Lynise Gibb Commissioner  
[www.nyc.gov/ddc](http://www.nyc.gov/ddc)

### PROJECT UPDATES

Department of Design and Construction  
 OFFICE OF COMMUNITY OUTREACH & NOTIFICATION  
 Eric Adams Mayor      Eduardo N. del Valle Acting Commissioner

## Project Update

Manhattan  
 October 2025  
 Project ID: MED645

### Installation of Distribution Water Main Various Locations

The New York City Department of Design and Construction (NYC DDC) continues to manage the Multi-location distribution water main installation project, MED645. Work includes, but is not limited to, water main installation at various locations, utility upgrades, and the installation of new hydrants.

Please note that NYC DDC is managing this project on behalf of our sponsor agency, the New York City Department of Environmental Protection (NYC DEP).

Work Completed as of October 2025

**Chelsea (W. 21st Street between 10th Avenue and 11th Avenue)**  
 All infrastructure work has been completed, and the contractor is finalizing the punch list.

**Flatiron District (W. 15th St. b/w 5th and 6th Avenues)**  
 All infrastructure work has been completed, and the contractor is finalizing the punch list.

**NoMad (E. 29th Street b/w Madison and 5th Avenue)**  
 The contractor completed part of the utility restoration and continued hand care excavations moving west toward Fifth Avenue.

**Union Square (E. 16th Street to E. 18th Street on Irving Place)**  
 The contractor is performing hand care excavations to install the gas main and make way for our water main.

Fourth Quarter 2025: The anticipated work is as follows:  
 The construction crew will continue hand excavation work to restore existing utility facilities. A scheduled water shutdown will take place to facilitate the replacement and installation of a new water main on W. 29th Street, between Madison Avenue and 5th Avenue.

Construction completed on the Flatiron Location (W. 15th Street between 5th Avenue and 6th Avenue)



THANK YOU

Q & A