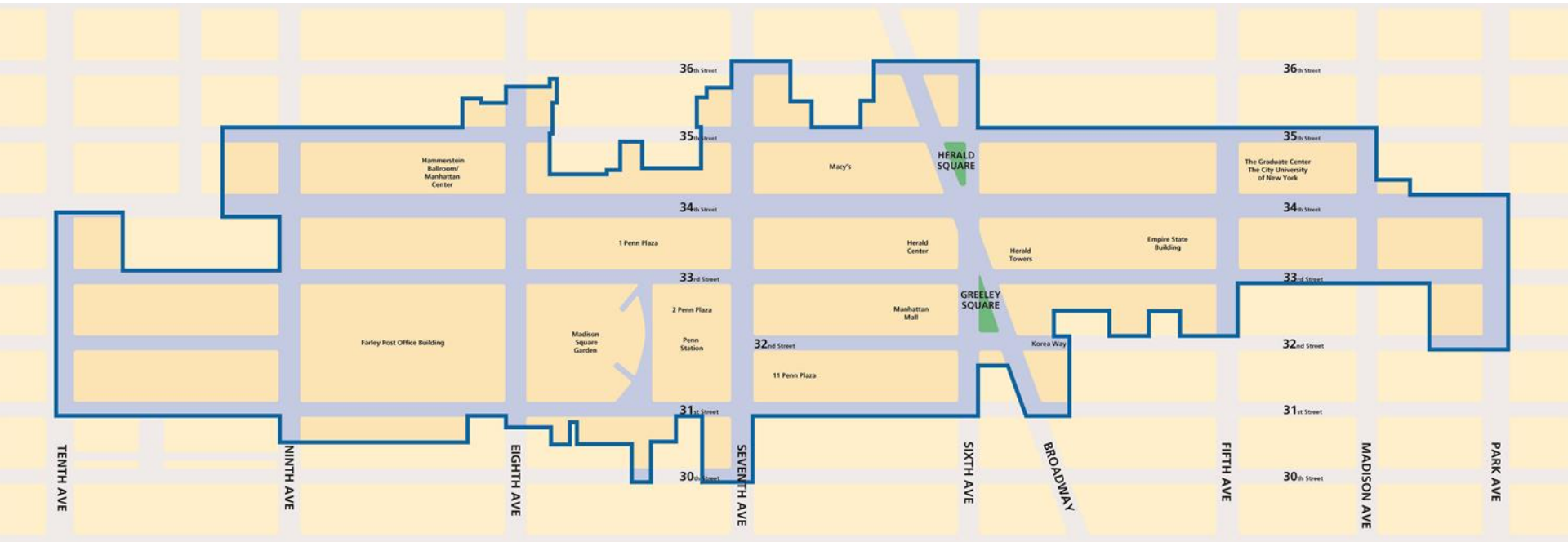




**34th Street  
Partnership**

# District Map



# Public Space Management





# Broadway Boulevard







# HERALD + GREELEY SQUARE ENHANCEMENTS

Public Workshop, January 2019

© NYC DOT

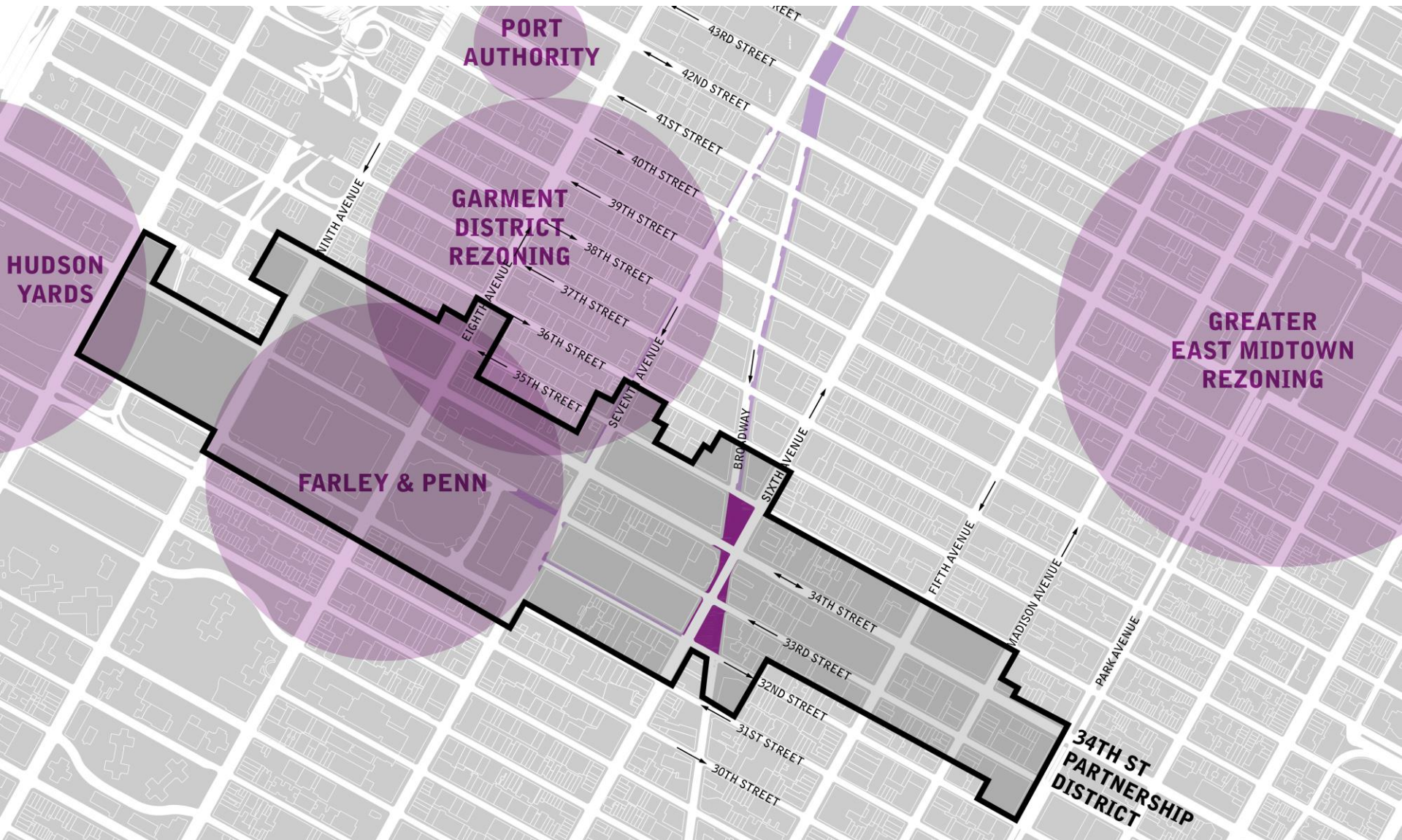


---

## Planning for the Future

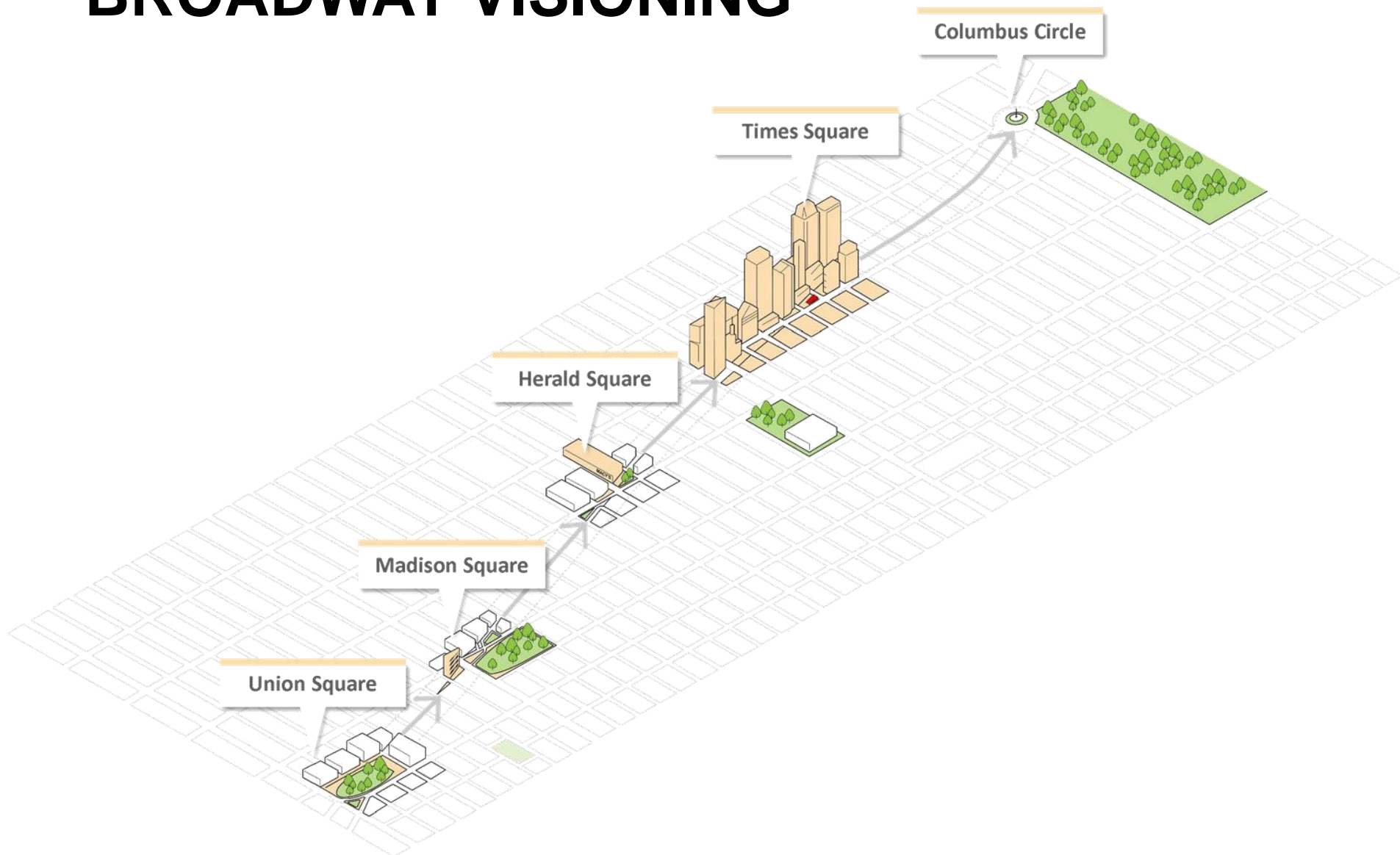


# ONGOING DEVELOPMENT IN THE DISTRICT





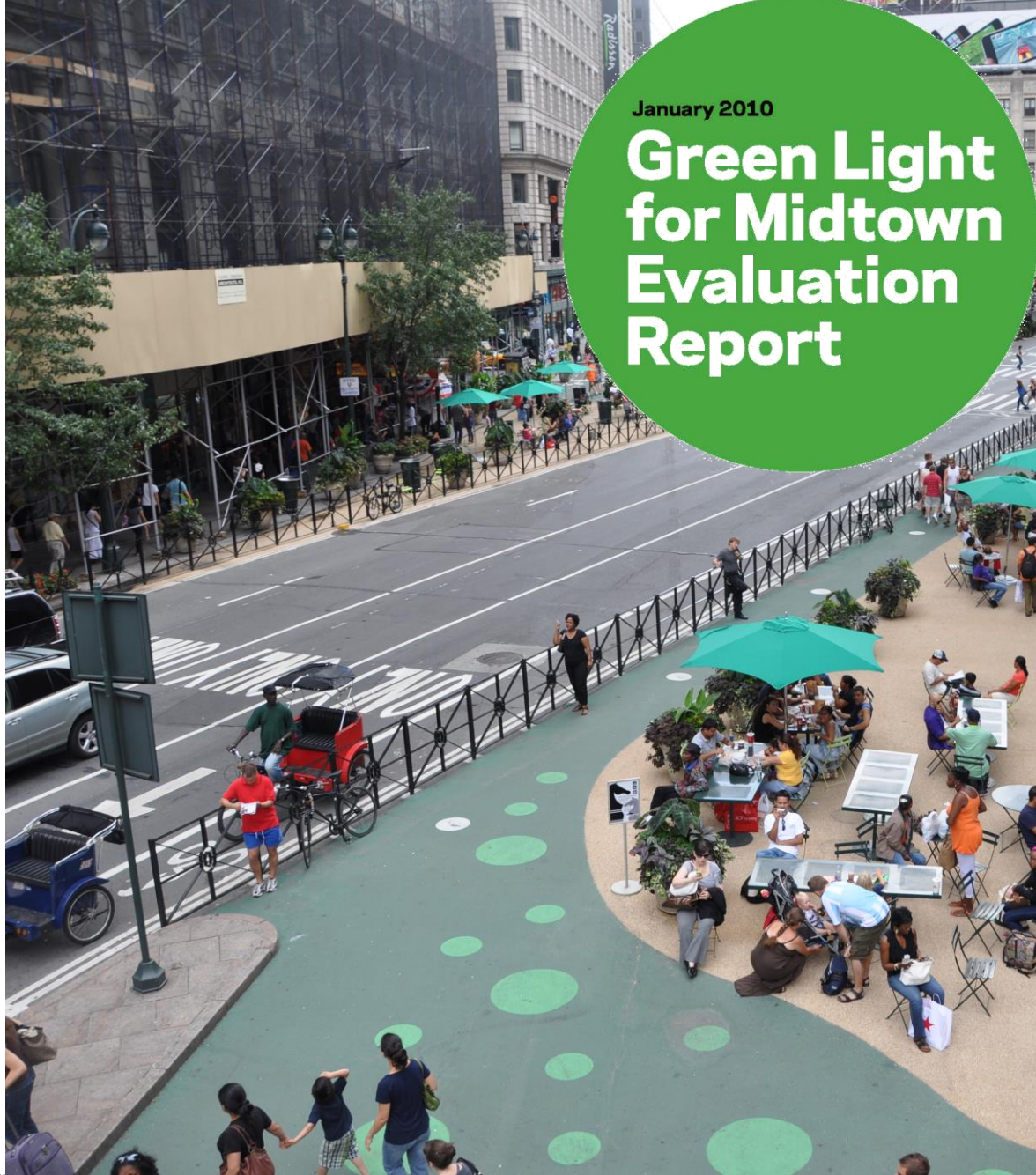
# BROADWAY VISIONING



---

## DOT Projects & Outcomes Since 2009

# GREEN LIGHT FOR MIDTOWN



January 2010

## Green Light for Midtown Evaluation Report

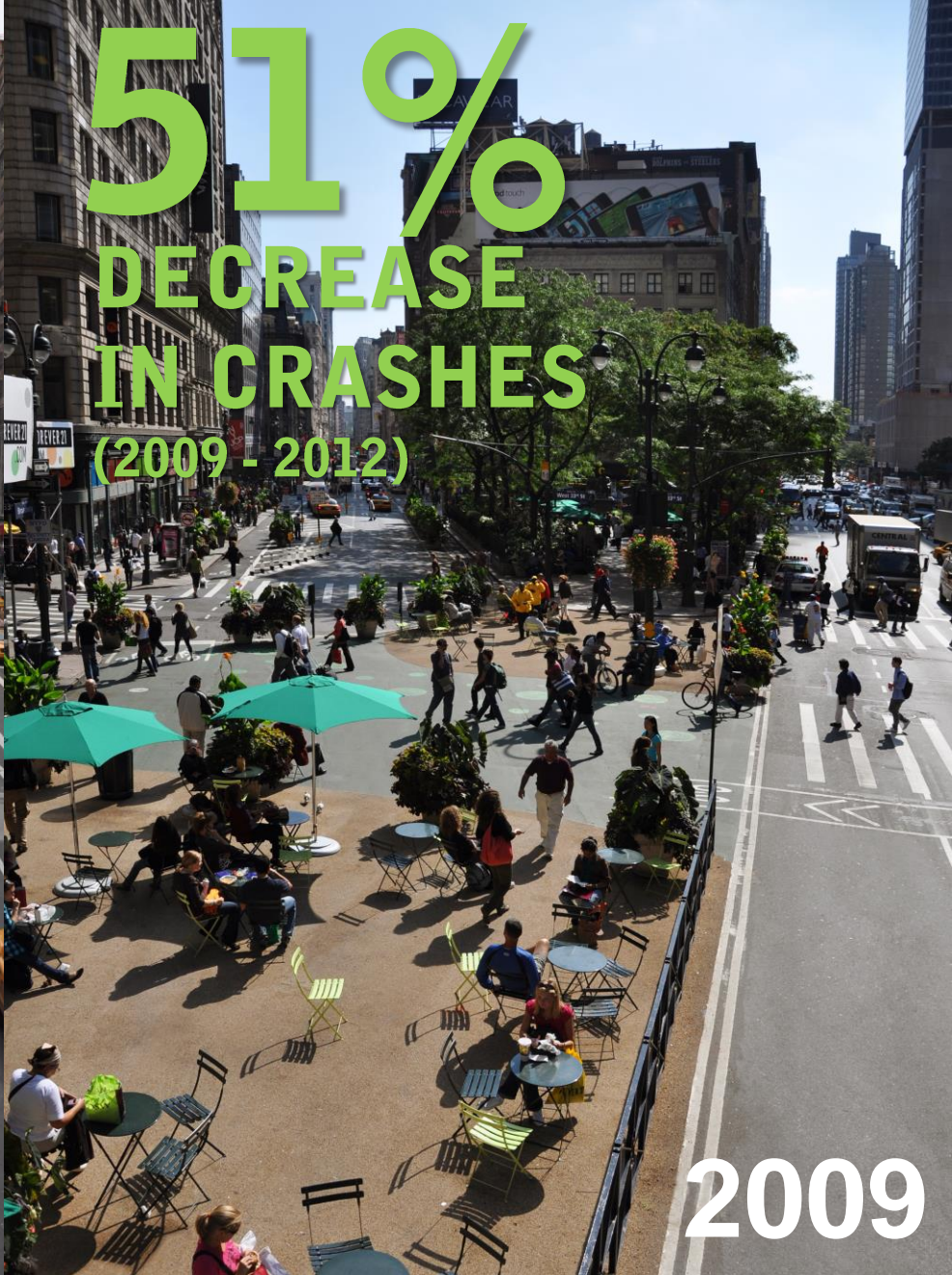


**267**  
**CRASHES**  
(2006 - 2009)



**2008**

**51%**  
**DECREASE**  
**IN CRASHES**  
(2009 - 2012)



**2009**



# DOT PROJECTS IN THE DISTRICT SINCE 2009



---

## Feedback & Goals



# THE PLAZA IS WELL USED

What is your relationship to the neighborhood?

46% Work

20% Shop

16% Live

5% Other

4% Study

How often do you come to the plaza?

32% Daily

32% Several times a week

22% Several times a month

11% Less often

3% First visit

Did you plan to visit the plaza today?

51% Yes, I planned to come to the plaza today

30% I happened to pass by

15% Yes, on my way someplace else

4% Yes, as part of my daily commute



Based on 98 surveys collected in the plaza on May 14 & 18 and October 14 & 15, 2018



# IMPROVEMENTS ARE NEEDED

What could be improved regarding the bike connections?

28% Additional Buffers

28% Markings

27% Alignment through pedestrian areas

What could be improved in the Herald Square & Greeley Square area?

19% More public space

16% More seating options

15% More space for circulation

15% Cleanliness



Top responses based on 98 surveys collected in the plaza on May 14 & 18 and October 14 & 15, 2018



# PROJECT GOALS

## Expand Pedestrian Space





# PROJECT GOALS

## Repair Damaged Surface





# PROJECT GOALS

## Clarify & Enhance Bike Lanes





# PROJECT GOALS

## Reduce Turn Conflicts

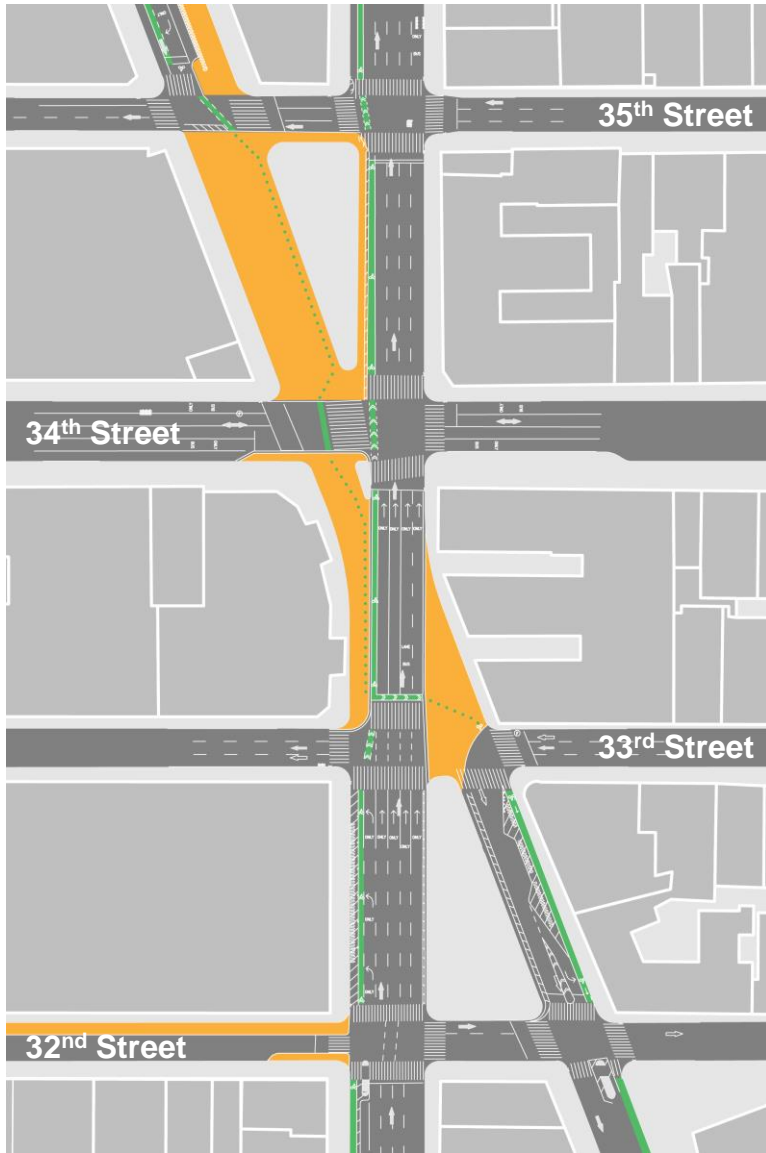




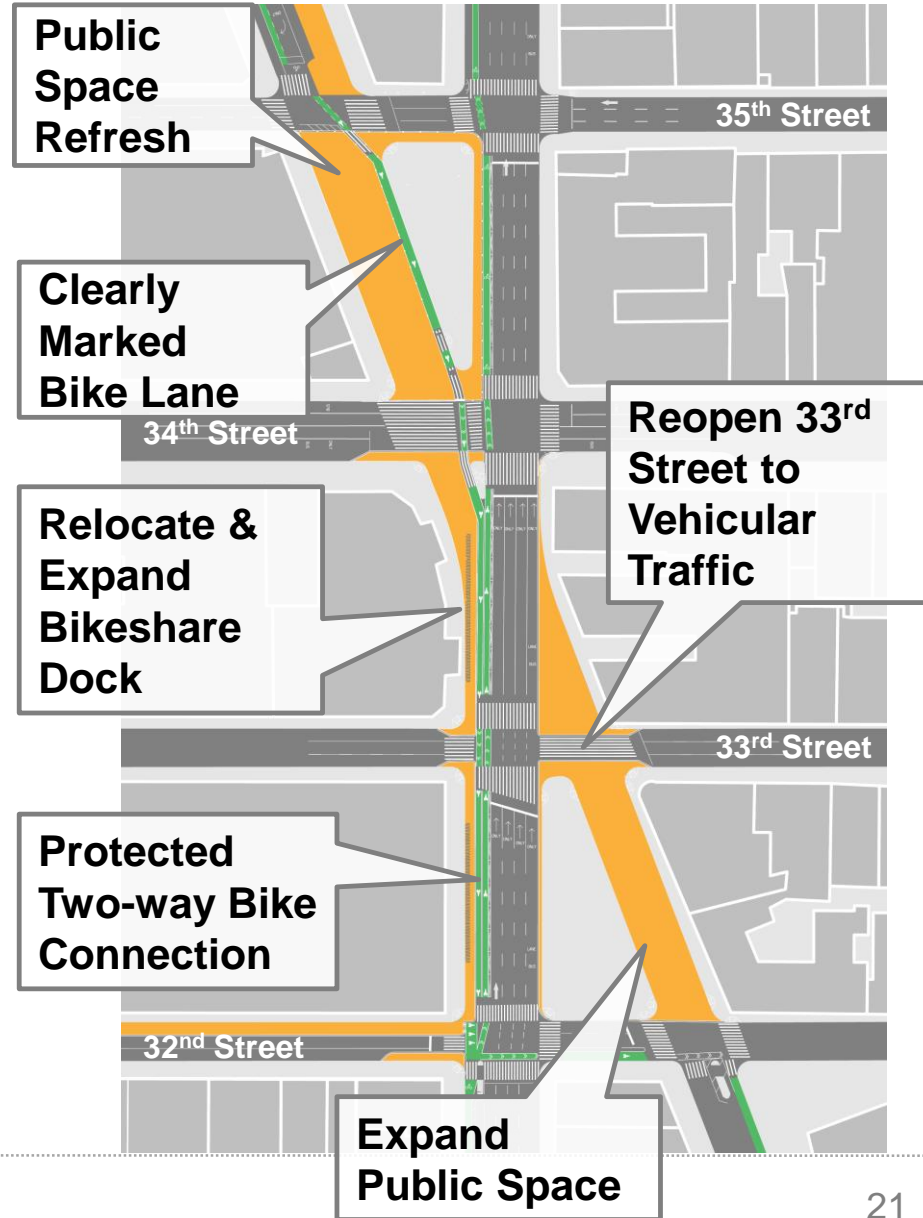
---

## Proposal & Impacts

# EXISTING



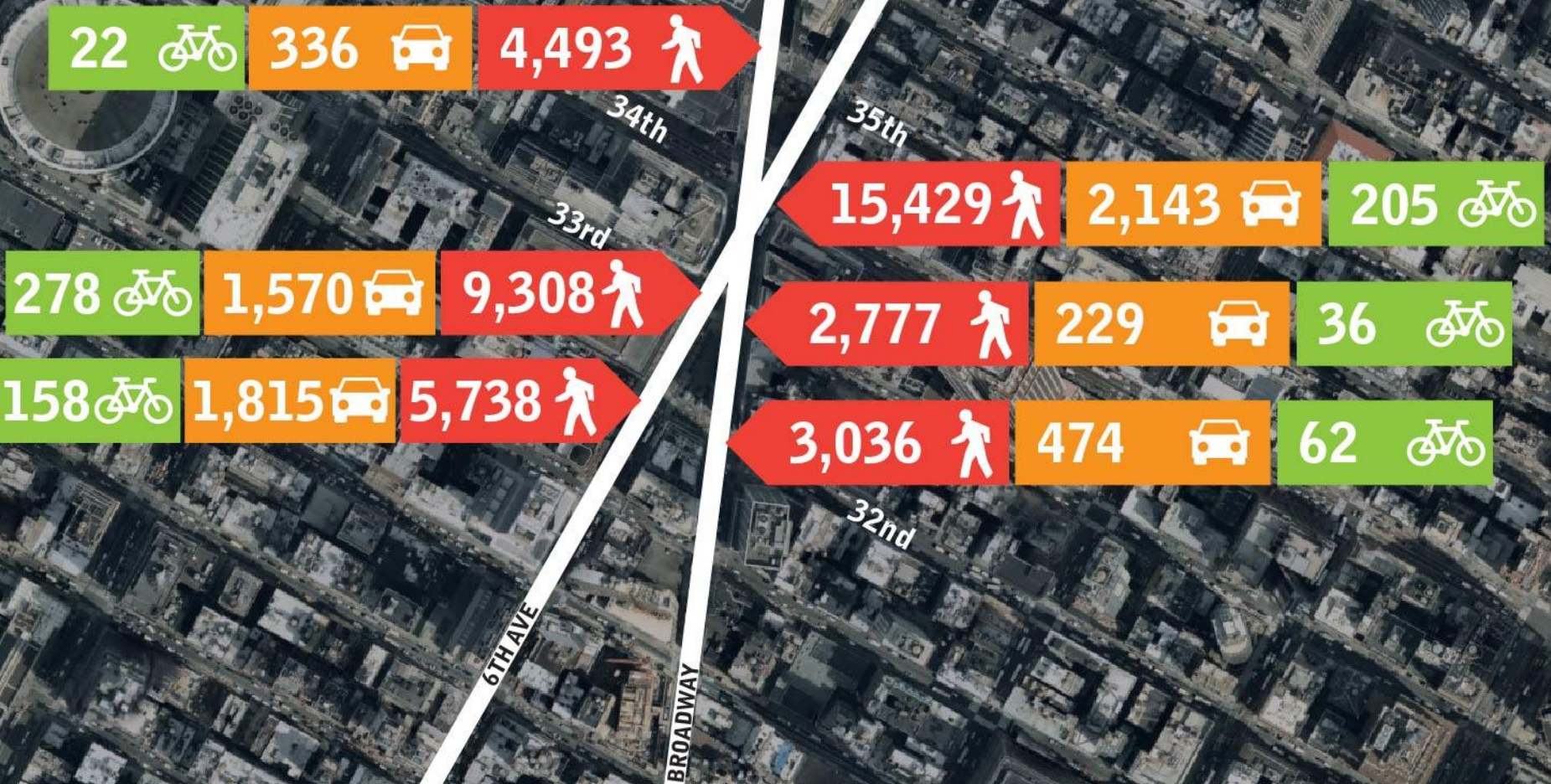
# PROPOSED





# BROADWAY VS 6<sup>TH</sup> AVE

## Peak Hour Peds & Vehicles

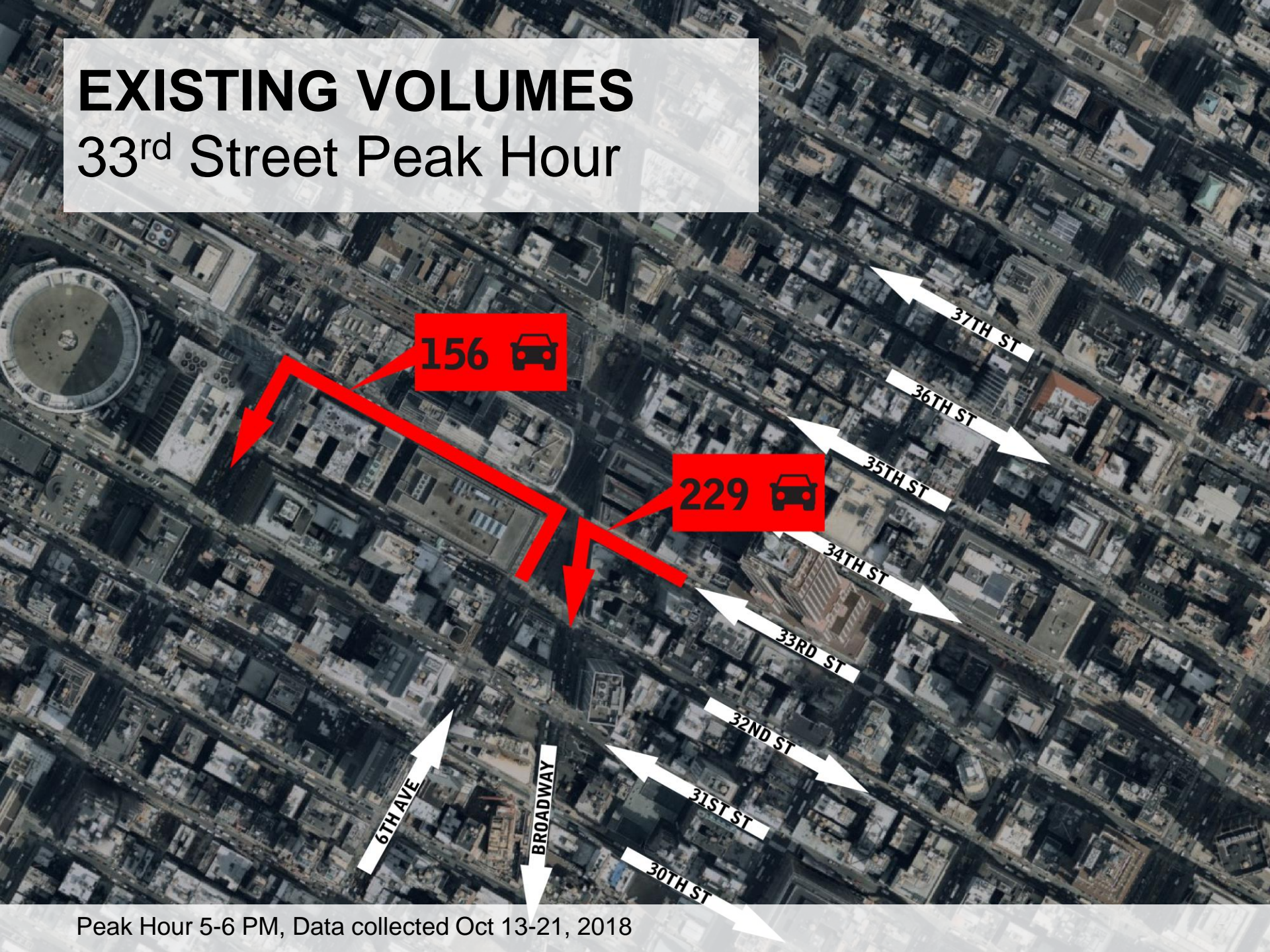


Peak Hour 5-6 PM, Data collected Oct 13-21, 2018



# EXISTING VOLUMES

## 33<sup>rd</sup> Street Peak Hour



Peak Hour 5-6 PM, Data collected Oct 13-21, 2018



# FUTURE VOLUMES

## 33<sup>rd</sup> Street Peak Hour



228 

228 

6TH AVE

BROADWAY

37TH ST

36TH ST

35TH ST

34TH ST

33RD ST

32ND ST

31ST ST

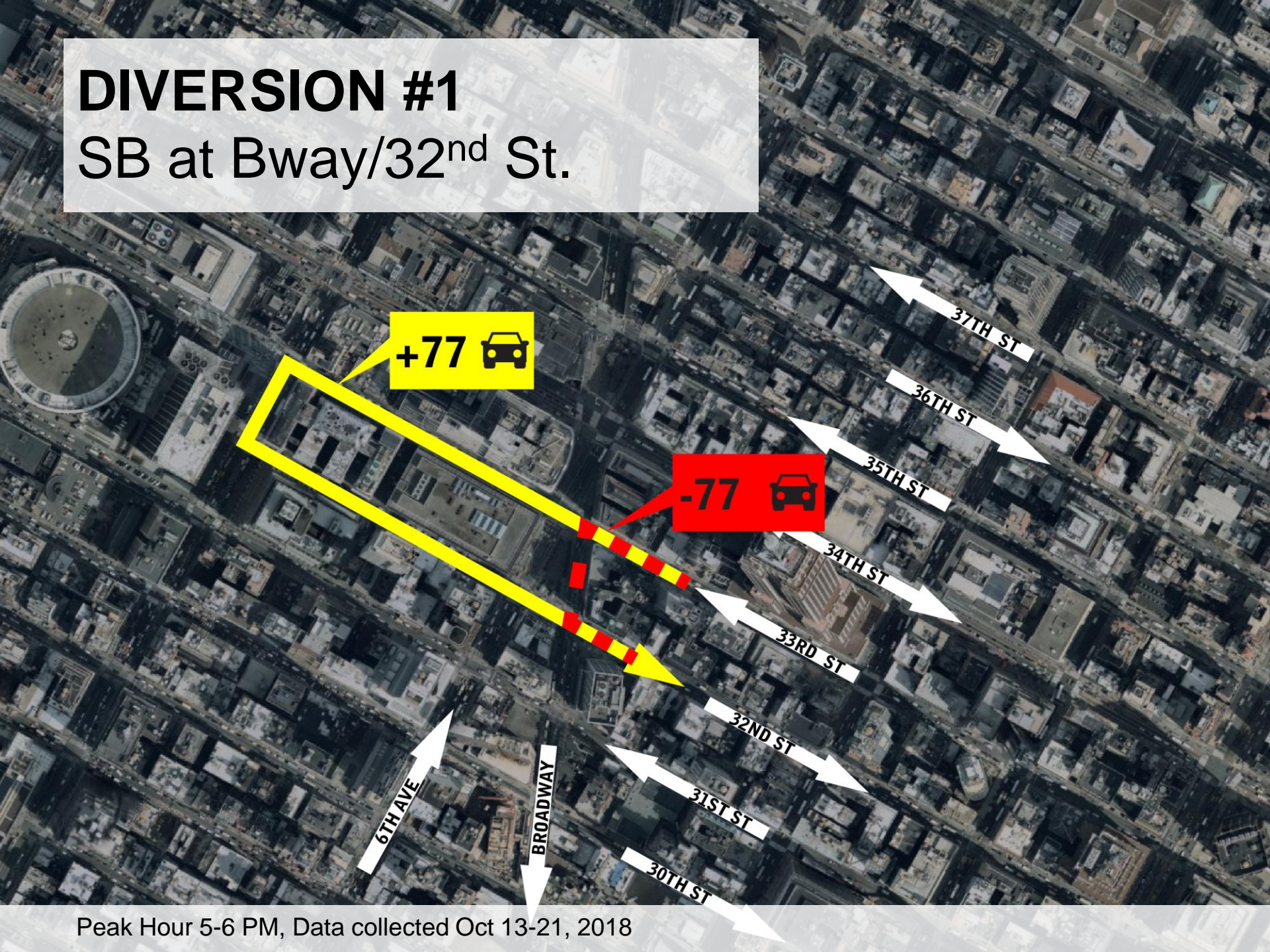
30TH ST

Peak Hour 5-6 PM, Data collected Oct 13-21, 2018



# DIVERSION #1

SB at Bway/32<sup>nd</sup> St.

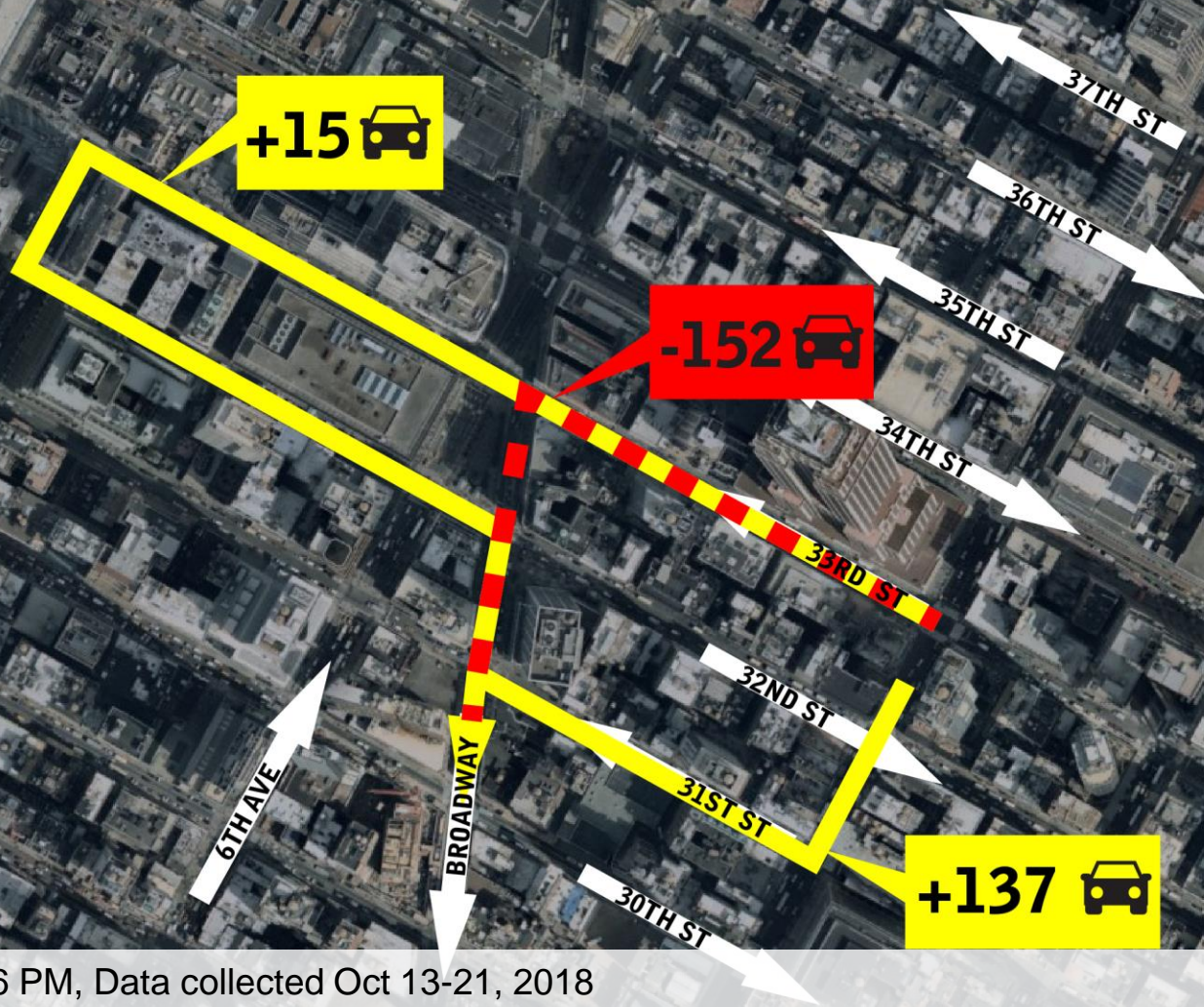


Peak Hour 5-6 PM, Data collected Oct 13-21, 2018



# DIVERSION #2

## SBT at Bway/W 32<sup>nd</sup> St.

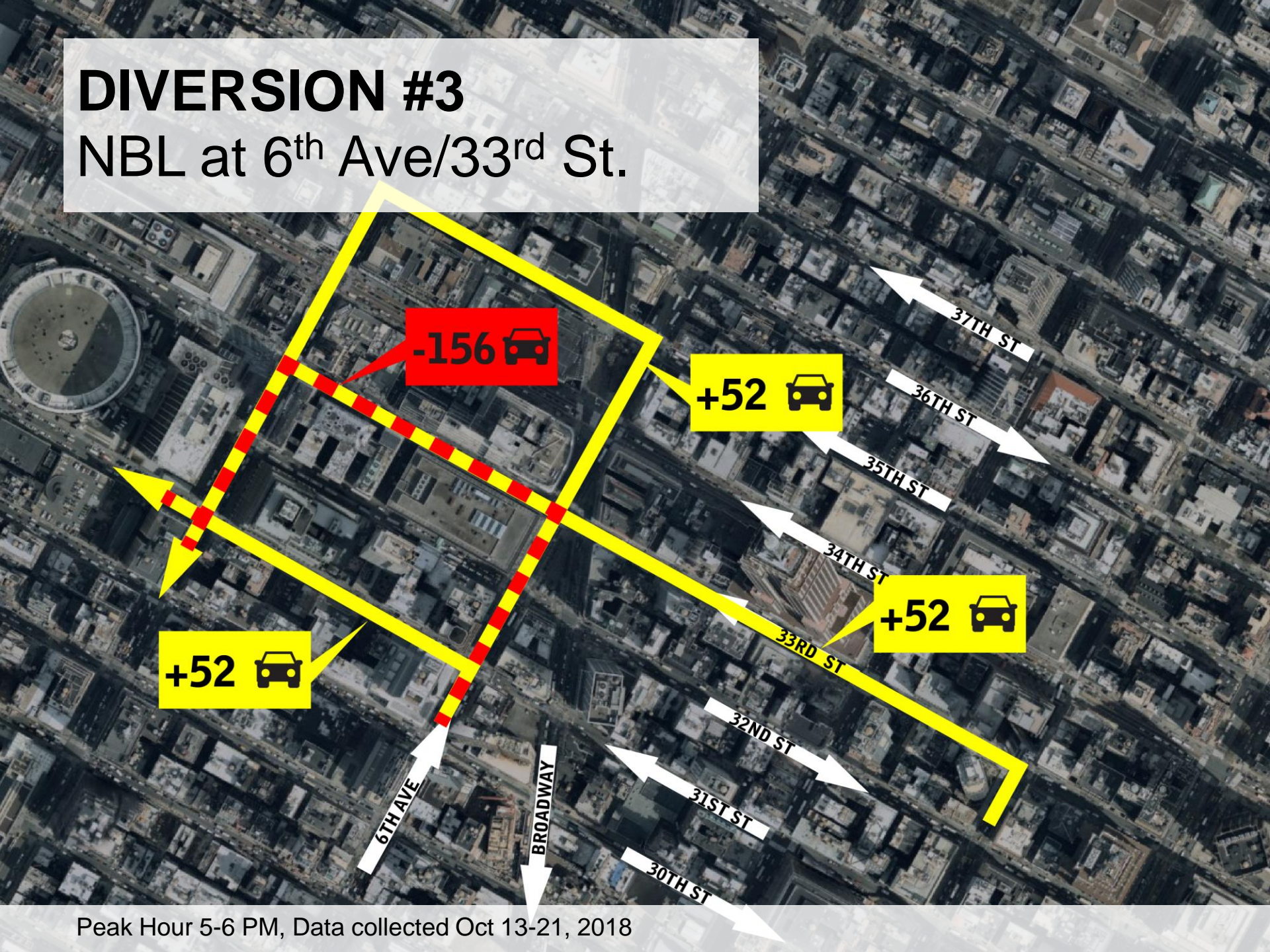


Peak Hour 5-6 PM, Data collected Oct 13-21, 2018



# DIVERSION #3

NBL at 6<sup>th</sup> Ave/33<sup>rd</sup> St.

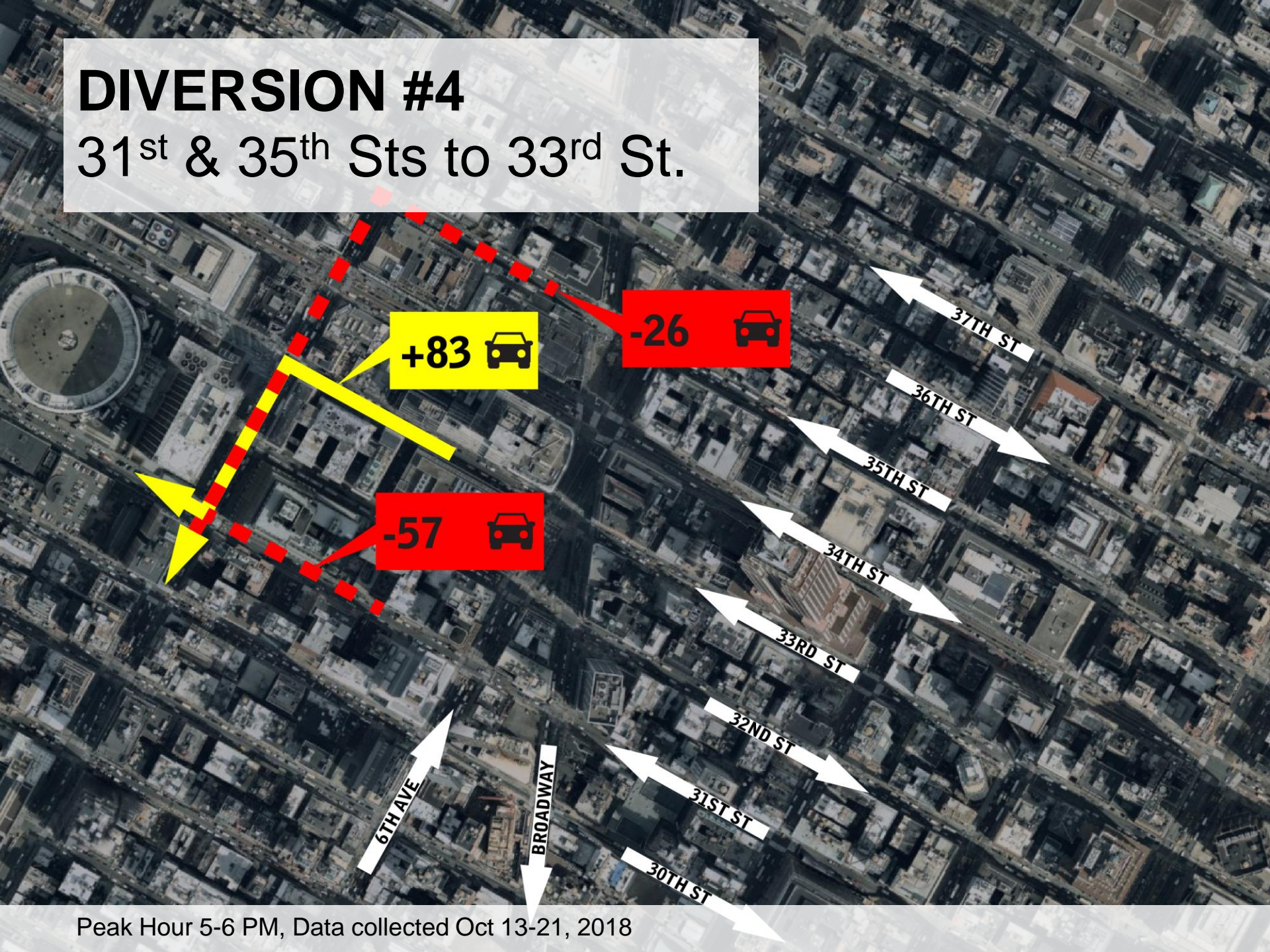


Peak Hour 5-6 PM, Data collected Oct 13-21, 2018



# DIVERSION #4

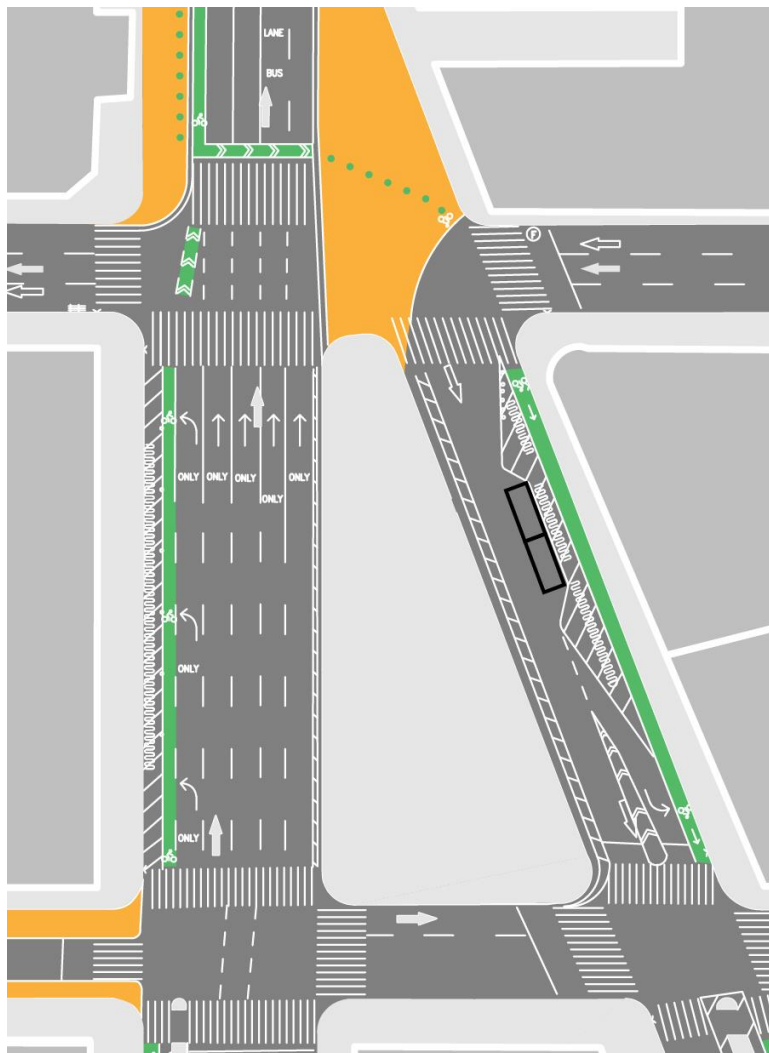
31<sup>st</sup> & 35<sup>th</sup> Sts to 33<sup>rd</sup> St.



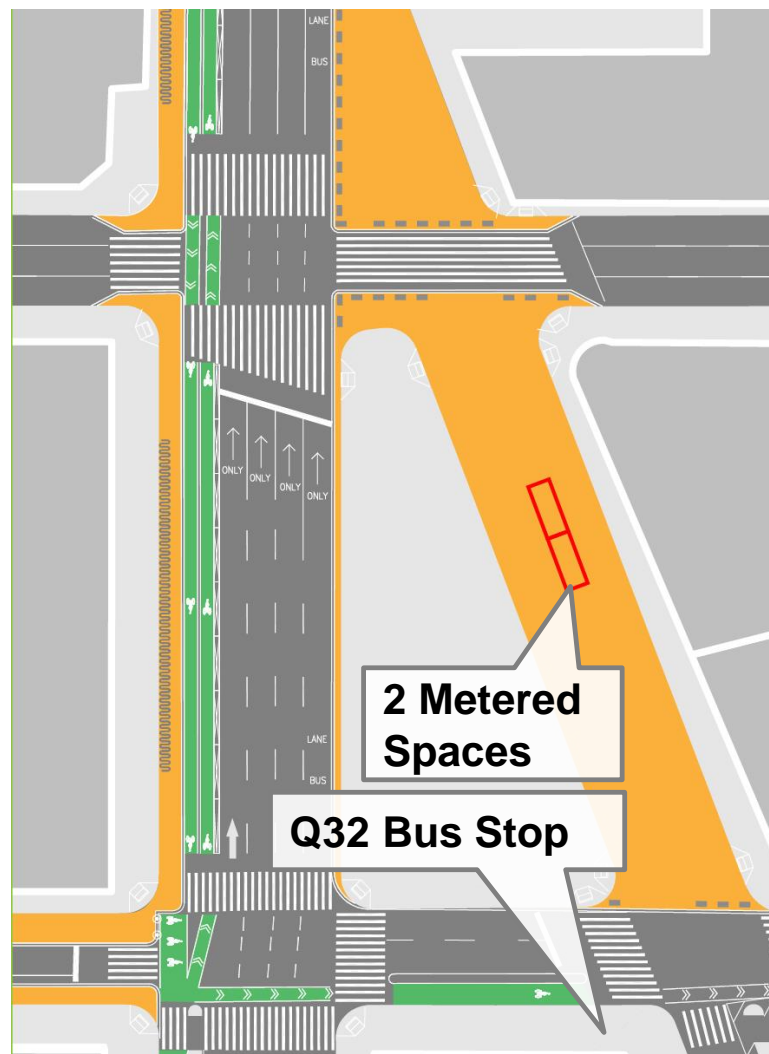
Peak Hour 5-6 PM, Data collected Oct 13-21, 2018



# CURB IMPACTS EXISTING

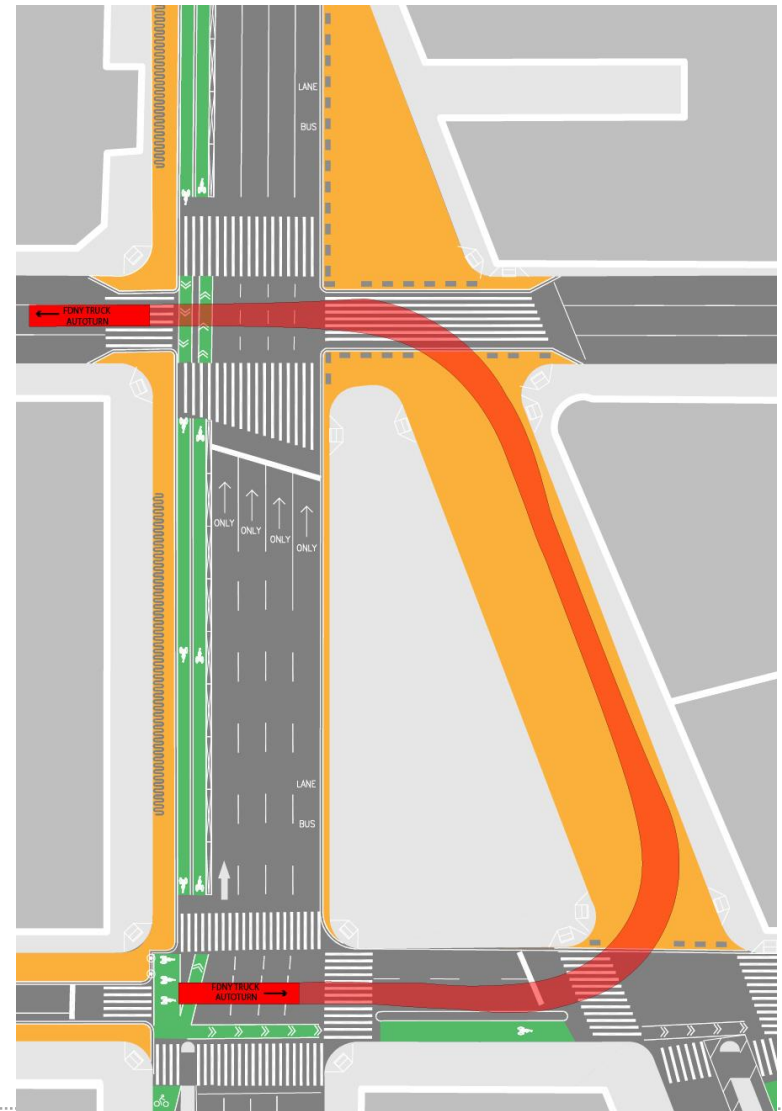
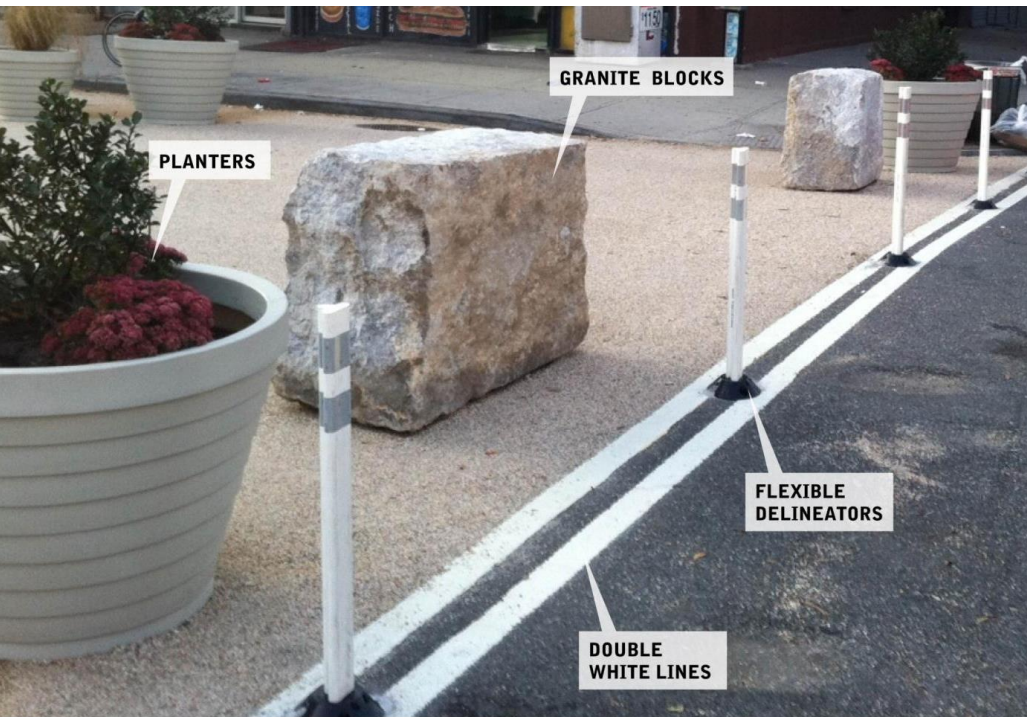


# PROPOSED





# SAFETY PERIMETER & EMERGENCY ACCESS





---

We Need Your Input



# NEXT STEPS

---

## Outreach

<b>January</b>	2 Public Workshops
<b>February</b>	CB5 Joint Parks/Transportation Meeting
<b>March</b>	CB5 Full Board

## Implementation

<b>Spring 2019</b>	Implementation, Pending CB5 Approval
<b>Fall 2019</b>	Traffic Study Update to CB5 and Ongoing Considerations



# THANK YOU!

---

## Questions?



NYC DOT



NYC DOT



nyc\_dot



NYC DOT