

Hanson Place & Third Avenue Safety Improvements

Presentation to Community Board 2,
Transportation and Public Safety
Committee

October 21, 2008



Janette Sadik-Khan, Commissioner



Janette Sadik-Khan, Commissioner

Hanson Place/Third Avenue Safety Improvements

- Hanson Place
 - Close uncontrolled slip from Flatbush/Fourth Avenues; construct median
 - Convert Hanson Place to two-way (between Ashland Place and South Portland Avenue)
 - Install temporary multi-way Stop-controlled crosswalks on Hanson Place at St. Felix Place
 - Construct **Greenstreets** at Fulton Street/So. Oxford Street



Janette Sadik-Khan, Commissioner

Hanson Place

Closure of uncontrolled slip from Flatbush/Fourth Avenues

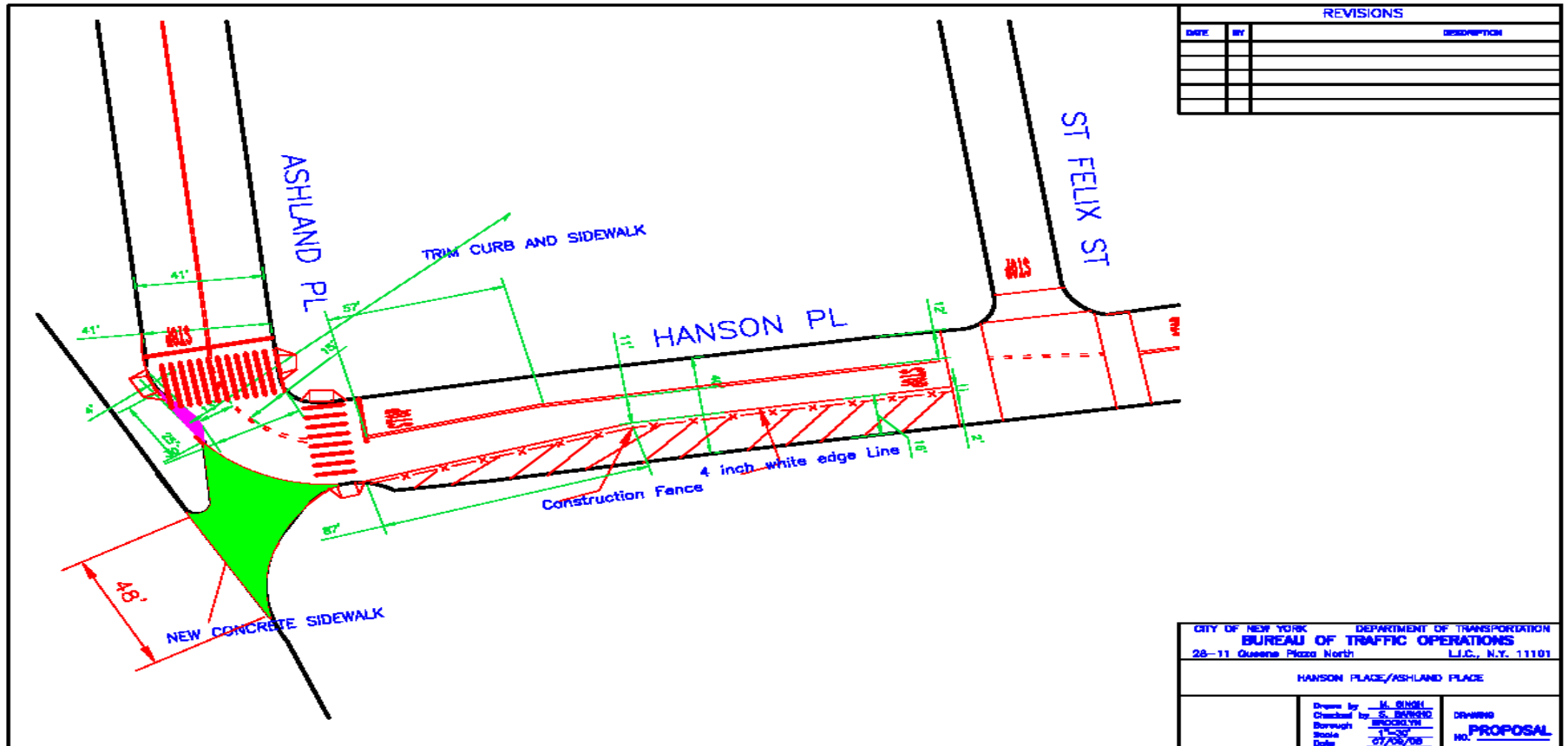


Flatbush Avenue Uncontrolled Slip



Janette Sadik-Khan, Commissioner

Hanson Place



- Closure of Slip ramp
- Construction of median

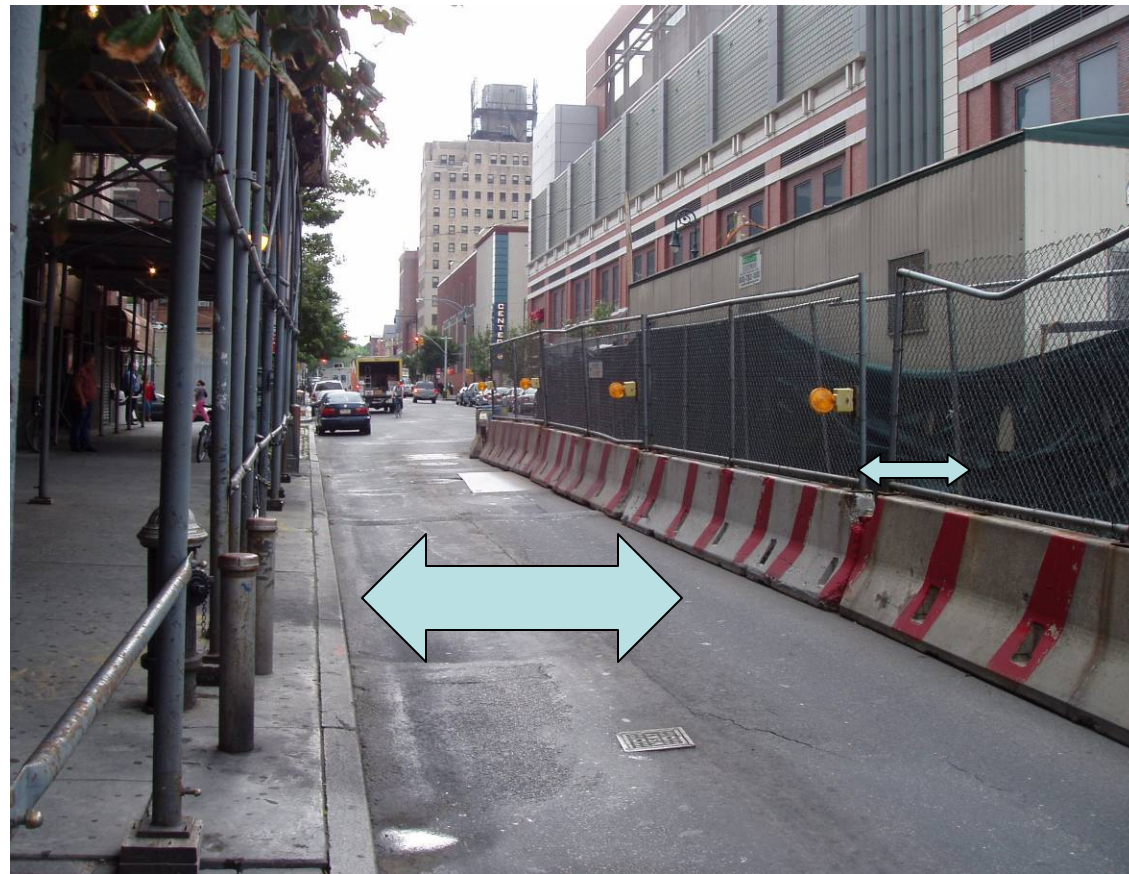


Janette Sadik-Khan, Commissioner

Hanson Place

Widening Hanson Place at construction site of LIRR Terminal

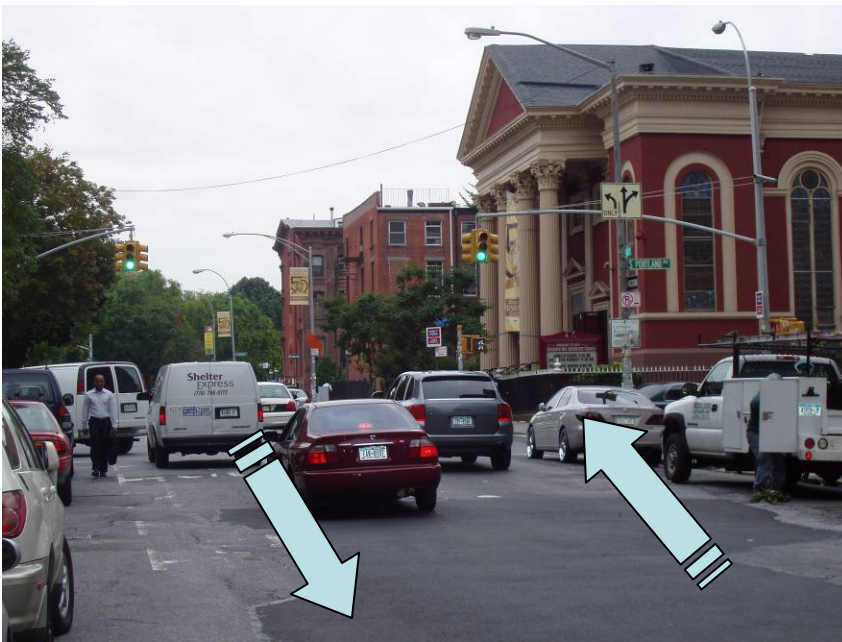
Looking east
from Ashland
Place



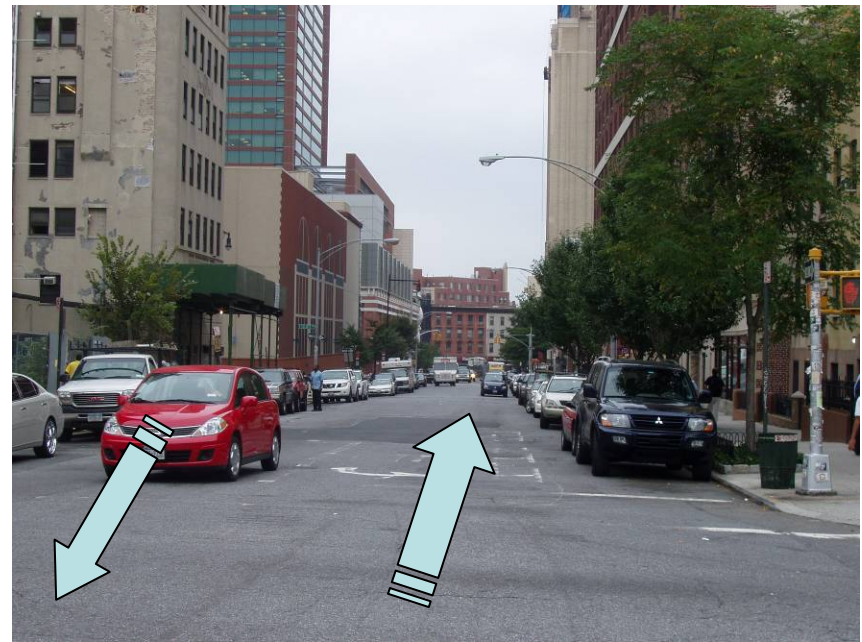
Janette Sadik-Khan, Commissioner

Hanson Place

Conversion to two-way operation from Ashland Place to So. Portland Avenue



Looking east at So. Portland Ave.



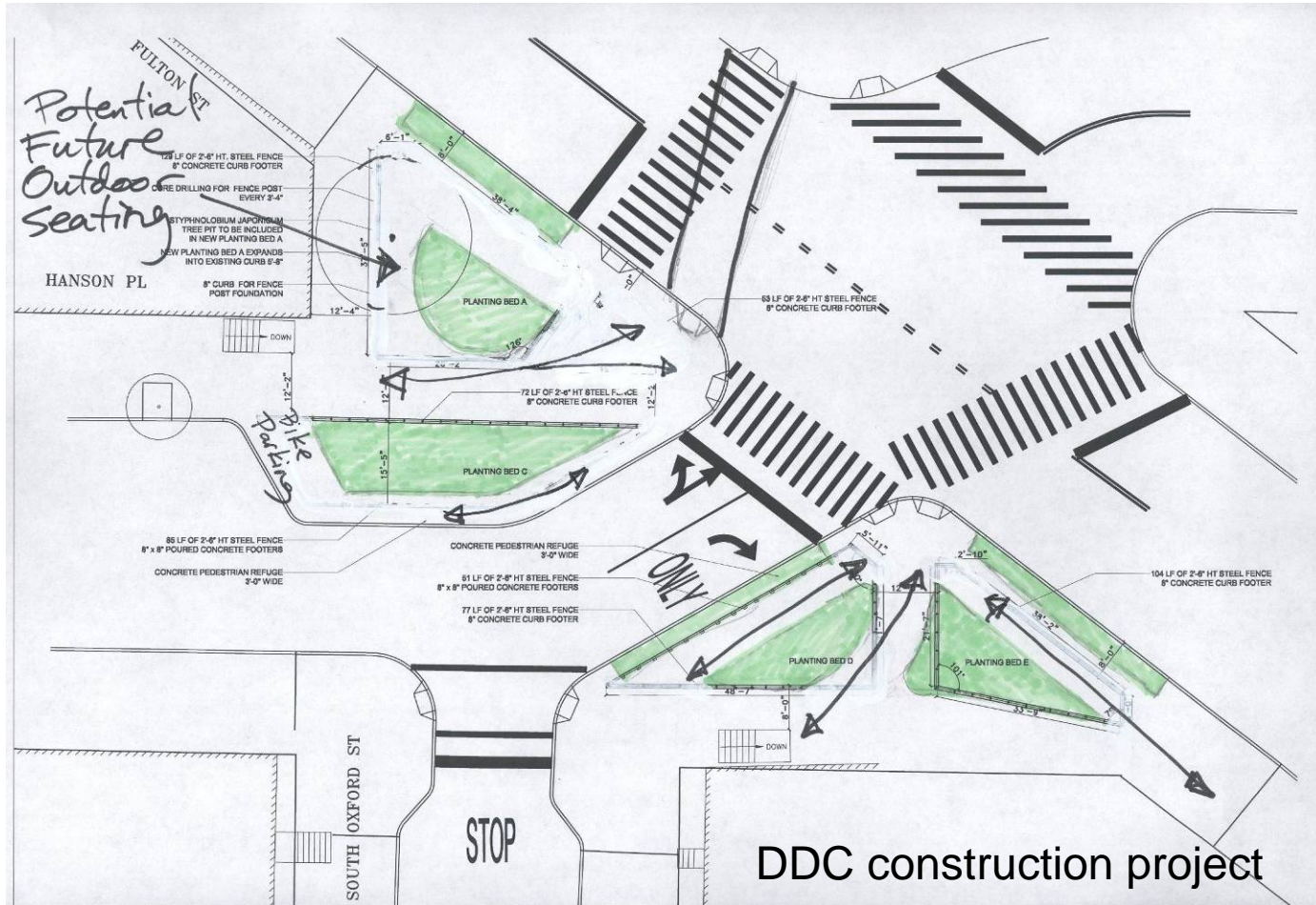
Looking west at So. Portland Ave.



Janette Sadik-Khan, Commissioner

Hanson Place

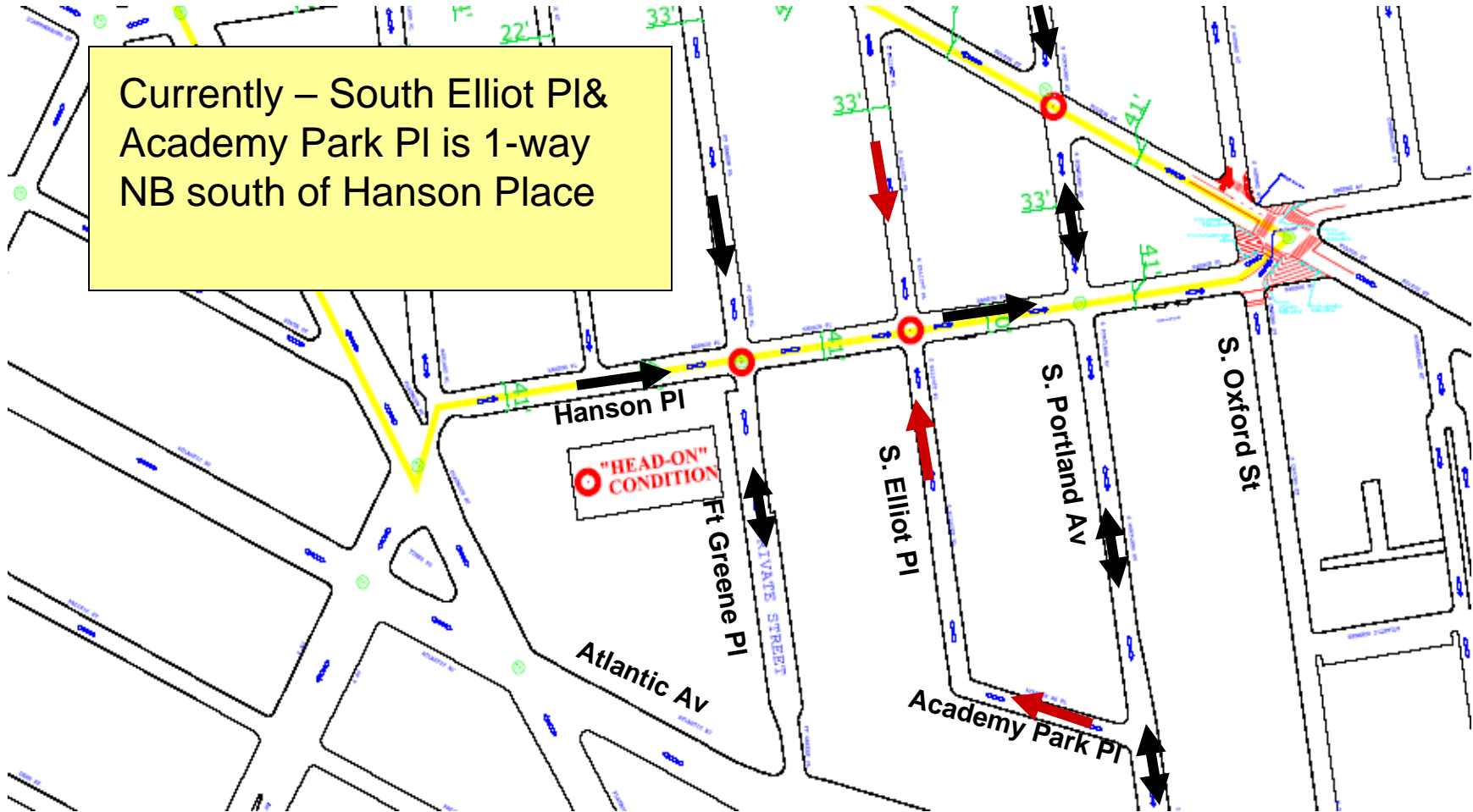
- Greenstreets at Hanson Pl/Fulton St/So. Oxford St



Janette Sadik-Khan, Commissioner

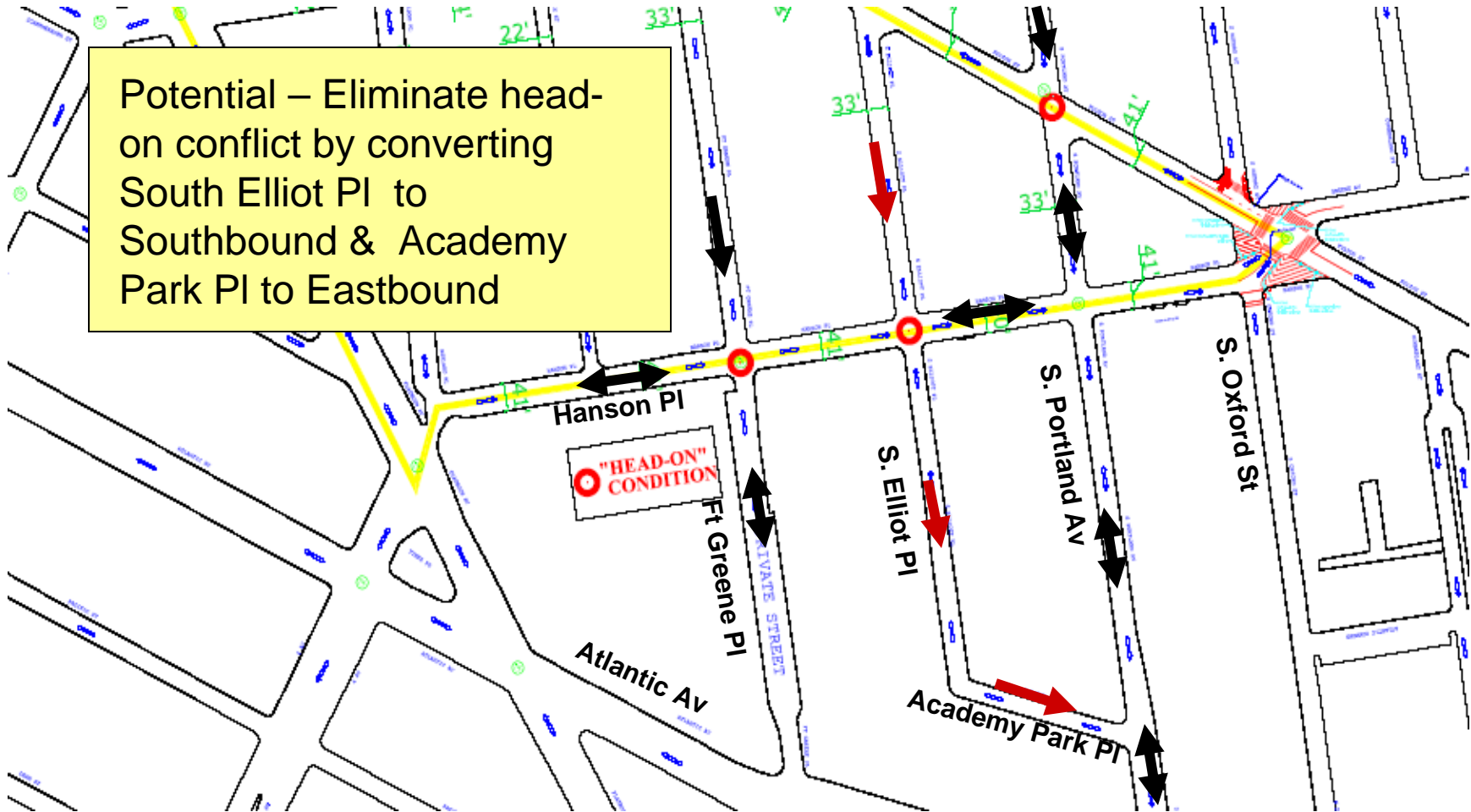
South Elliot Pl/Academy Park Pl

Potential Conversion from NB to SB



South Elliot Pl/Academy Park Pl

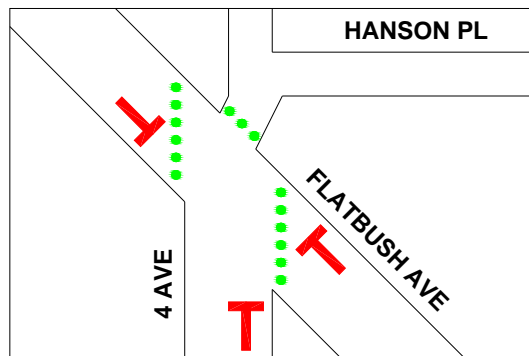
Potential Conversion from NB to SB





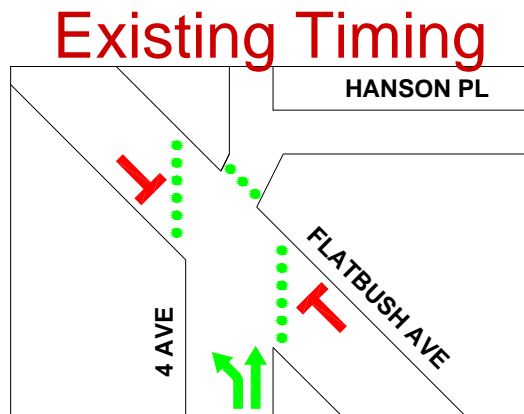
Janette Sadik-Khan, Commissioner

Signal Phasing 4th/Flatbush



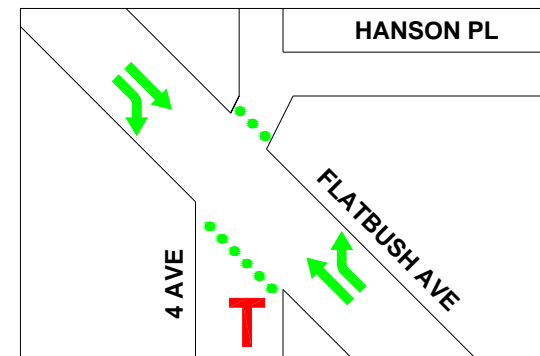
PHASE 1

AM 8 sec; PM 8 sec



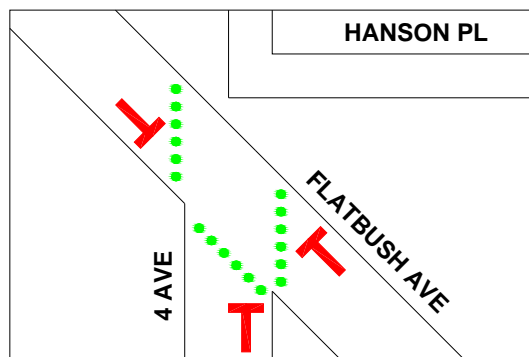
PHASE 2

AM 40 sec; PM 40 sec



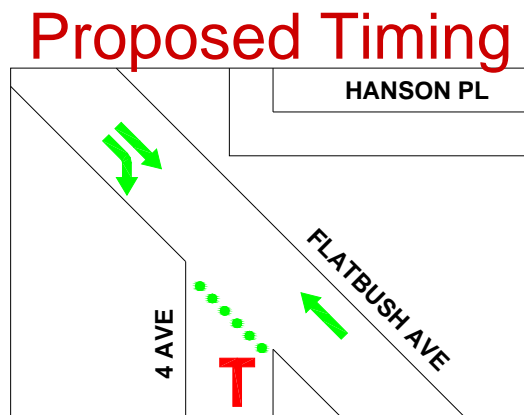
PHASE 3

AM 72 sec; PM 72 sec



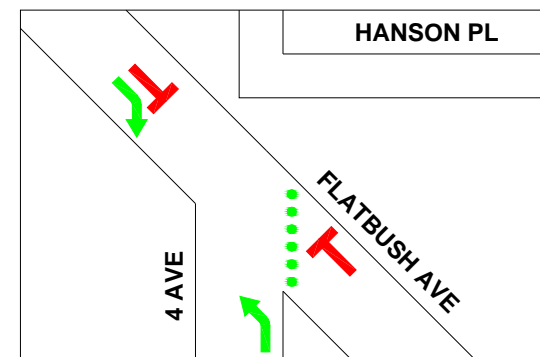
PHASE 1

AM 31 sec; PM 31 sec



PHASE 2

AM 61 sec; PM 65 sec



PHASE 3

AM 28 sec; PM 24 sec



Janette Sadik-Khan, Commissioner

Hanson Place/Third Avenue Safety Improvements

- Third Avenue
 - Convert Third Avenue to one-way northbound between Atlantic Avenue and Flatbush Avenue
 - Permit left turn onto Atlantic Avenue
 - Remove “peak hour” curbside parking regulations
 - Close slip ramp from Flatbush Avenue/expand Temple Square



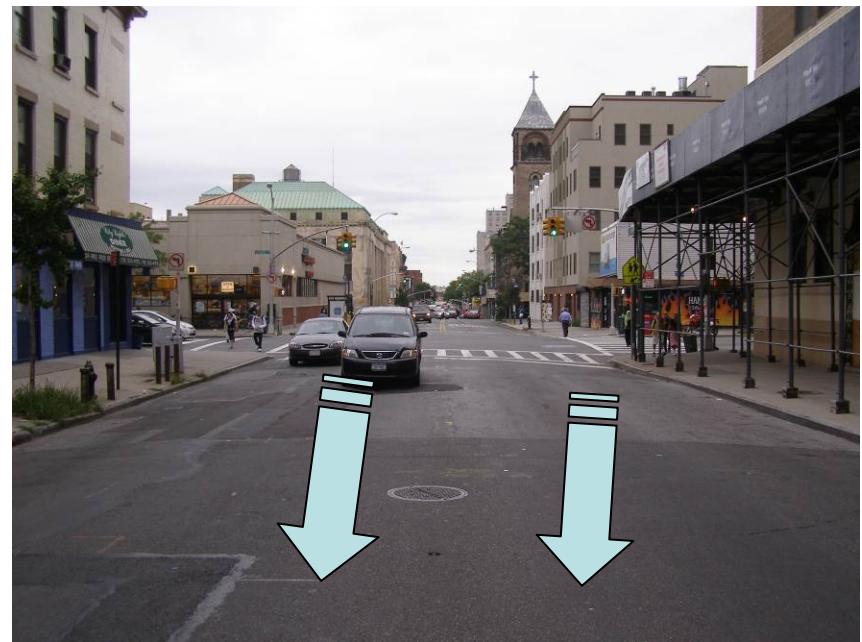
Janette Sadik-Khan, Commissioner

Third Avenue

- Conversion to one-way northbound operation between Atlantic Avenue and Schermerhorn Street



Looking south from Schermerhorn St.



Looking south at Atlantic Avenue



Janette Sadik-Khan, Commissioner

Third Avenue

- Permit left turn at Atlantic Avenue



Looking north at Atlantic Avenue



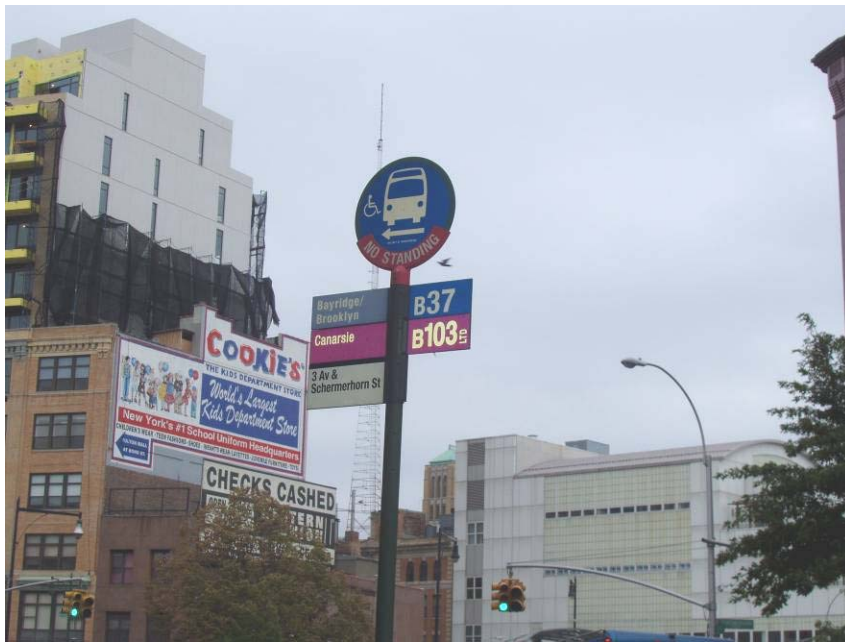
Looking east at Atlantic Avenue



Janette Sadik-Khan, Commissioner

Third Avenue

Re-routing of B37 & B103 to Fourth Avenue

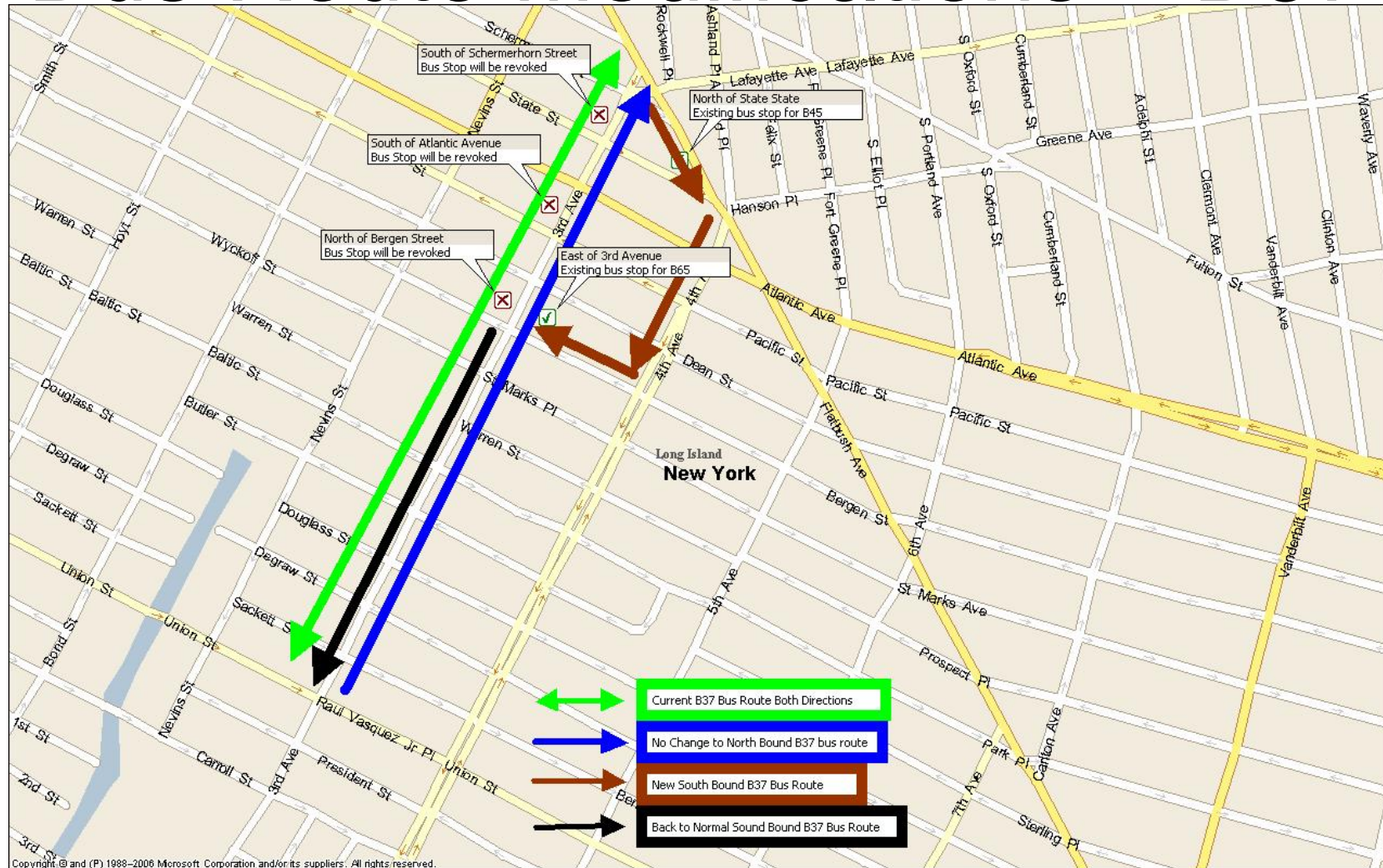


Bus Stop at Schermerhorn Street



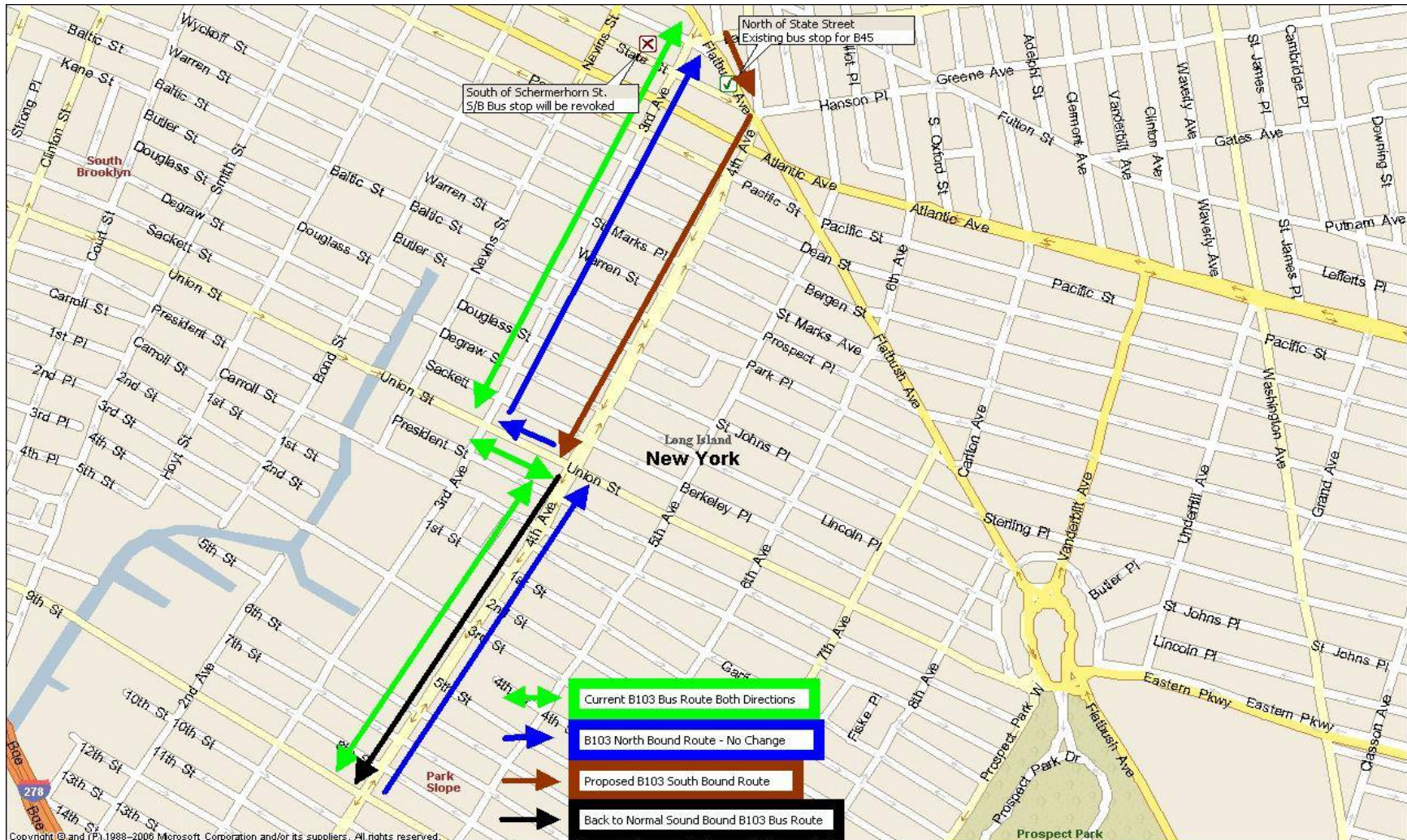
Janette Sadik-Khan, Commissioner

Bus Route Modifications – B37



Janette Sadik-Khan, Commissioner

Bus Route Modifications – B103



Janette Sadik-Khan, Commissioner



Janette Sadik-Khan, Commissioner

Temple Square

Closure of west slip from Flatbush Avenue



Looking east at Flatbush Avenue,
West Slip

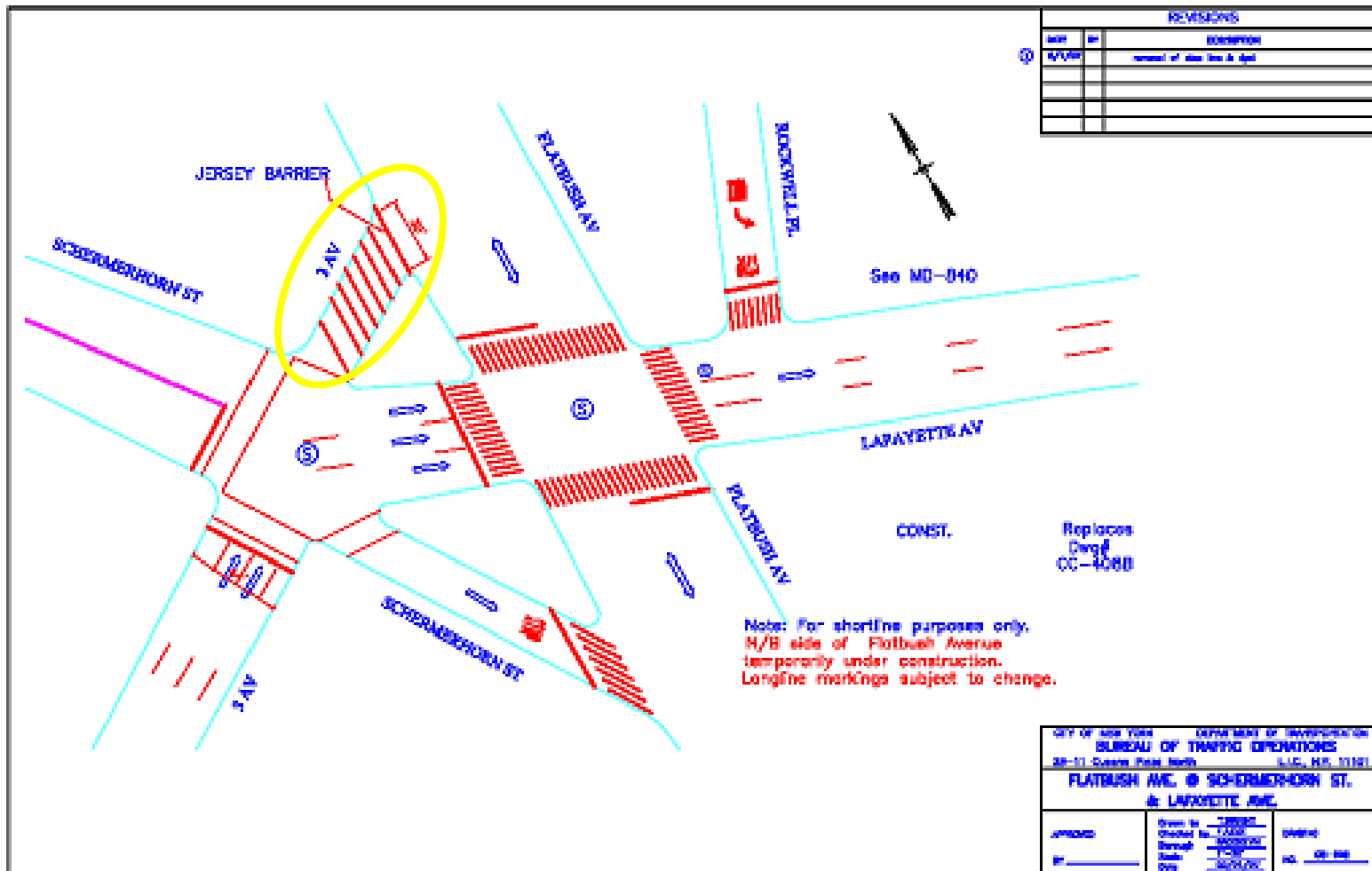


Looking south at Flatbush Avenue,
West Slip



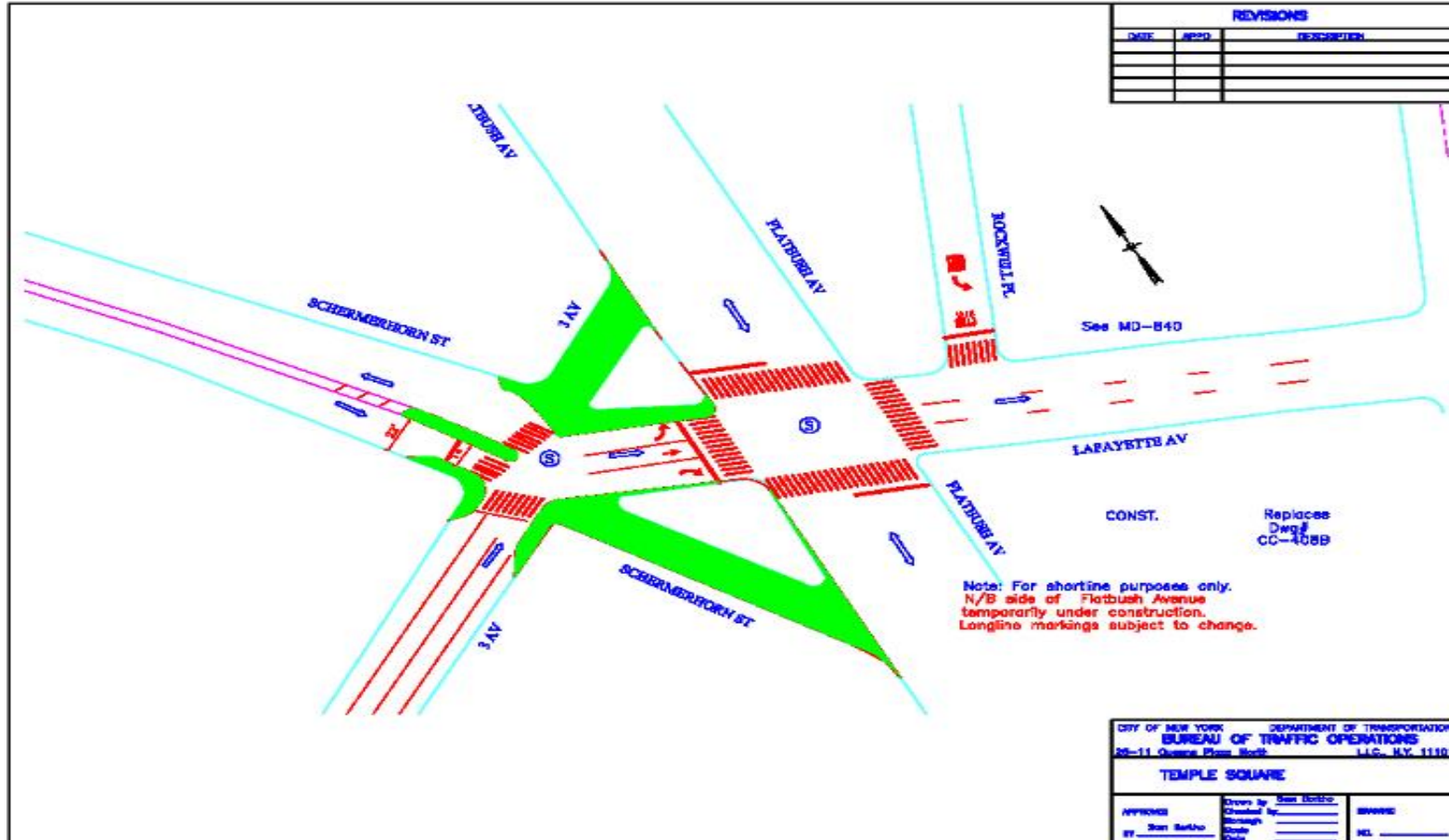
Janette Sadik-Khan, Commissioner

Temple Square – Slip Closure



Janette Sadik-Khan, Commissioner

Temple Square – Future Concept



Janette Sadik-Khan, Commissioner