

Grand St and Driggs Ave - Williamsburg Bridge Access



Office of Alternative Modes
Traffic Operations Bureau

March 17, 2009
Brooklyn CB1
Board Meeting

Greenpoint-Williamsburg Bicycle Subnetwork

Location	Limits	Lane Miles
Leonard St - Manhattan Ave Pair - May 2008		
Leonard St	Greenpoint Ave - Moore St	1.9
Wallabout St	Leonard St - Harrison Ave	0.2
Harrison Ave	Wallabout St - Flushing Ave	0.1
Tompkins Ave	Flushing Ave - Myrtle Ave	0.3
Broadway - Williamsburg Bridge & Waterfront - May 2008		
Broadway	Bedford Ave - Kent Ave	0.5
Manhattan & Greenpoint Avenues - Greenpoint Network - July 2008		
Manhattan Ave	Commercial St - Greenpoint Ave	1.0
Greenpoint Ave	West St - Kingsland Ave	1.8
Franklin St	Dupont St - Commercial St	0.1
Commercial Street	Franklin St - Manhattan Av	0.4
Ash St	Manhattan Ave - McGuinness Blvd	0.1
Box Street	Commercial St - McGuinness Blvd	0.3
McGuinness Blvd	Ash St - Box St	0.1
Paidge Ave	McGuinness Blvd - Provost St	0.3
Provost St	Paidge Ave - Greenpoint Ave	0.8
Franklin/Wythe - Southbound Brooklyn Backbone - August 2008		
Wythe Ave	Wallabout St - N 14 St	1.5
Franklin Ave	Bergen St - Wallabout St	2.0
Kent Ave & West St - Interim Brooklyn Waterfront Greenway - October 2008		
Division Street	Kent Ave - Wythe Ave	0.1
Division Street	Wythe Ave - Bedford Ave	0.1
Kent Avenue	Clymer St - Franklin St	3.1
Franklin Street	Kent Ave - Cayler St	0.4
Franklin Street	Cayler St - Oak St	0.1
Oak Street	Franklin St - West St	0.1
Cayler Street	Franklin St - West St	0.1
West Street	Cayler St - Oak St	0.1
West Street	Oak St - Freeman St	0.9
West Street	Freeman St - Eagle St	0.1
Grand & Driggs Aves- Williamsburg Subnetwork - May 2009		
Grand St	Boriquen Pl - Metropolitan Ave Bridge	2.5
Boriquen Pl	Grand St - Williamsburg Bridge Approach	0.4
Broadway	Driggs Ave - Havenmeyer St	0.2
Havenmeyer St	Broadway - S 4 St	0.1
Driggs Ave	Division Ave - Lorimer St	1.2
Bedford Ave	Division Ave - South 5th St	0.3
South 5th Street	Bedford Ave - South 5th Pl	0.1
Total		20.9

21 Miles of bicycle routes planned and installed

Key Connections

- Pulaski Bridge
- Williamsburg Bridge



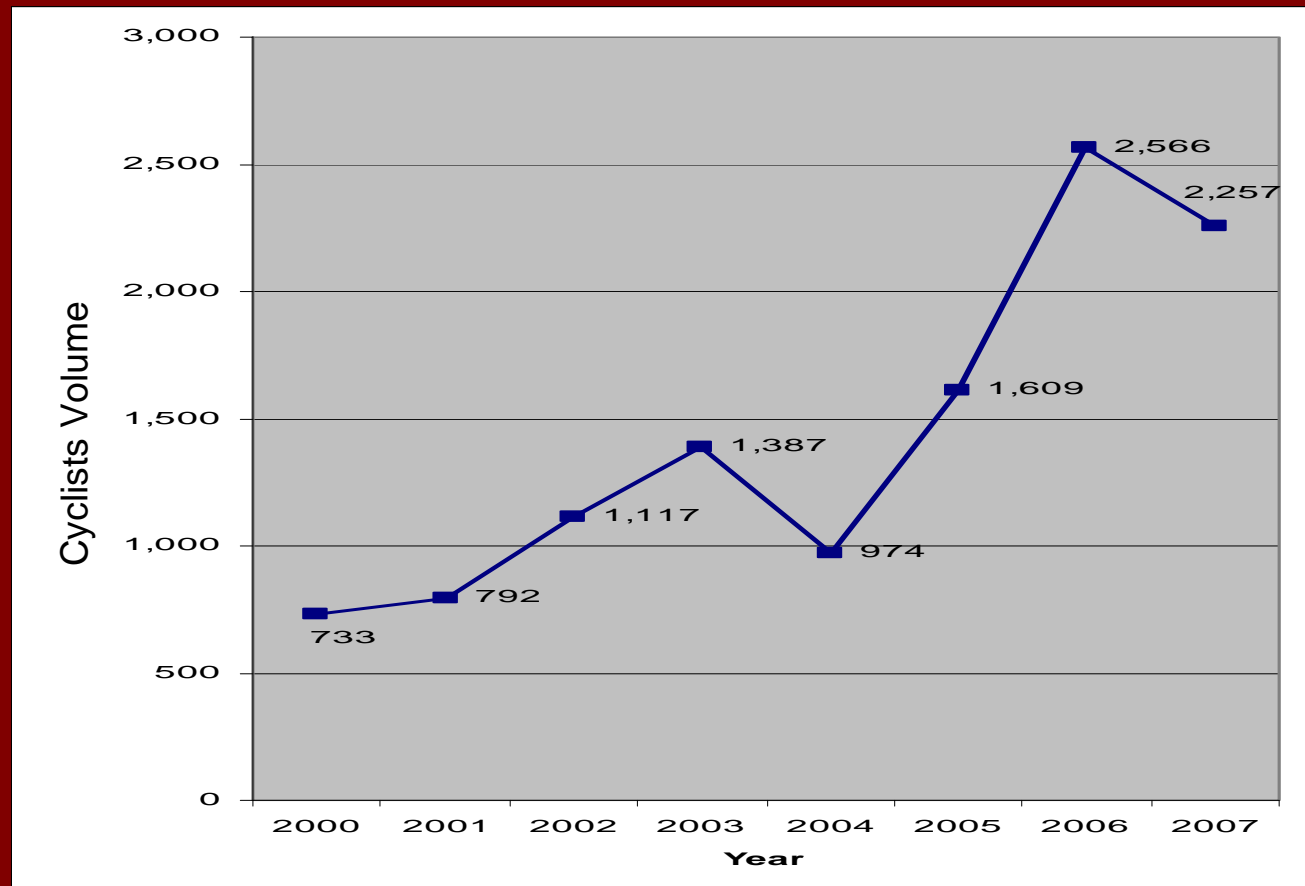
Cycling Demand in CB1

Williamsburg Bridge

2008 = 3,001 cyclists

(Average Screenline count (May,
July/August, Sept.)

– 12 hour



Source: NYC Bicycle Screenline Count

Cycling more than **tripled** between 2000 and 2007

Grand Street and Driggs Avenue

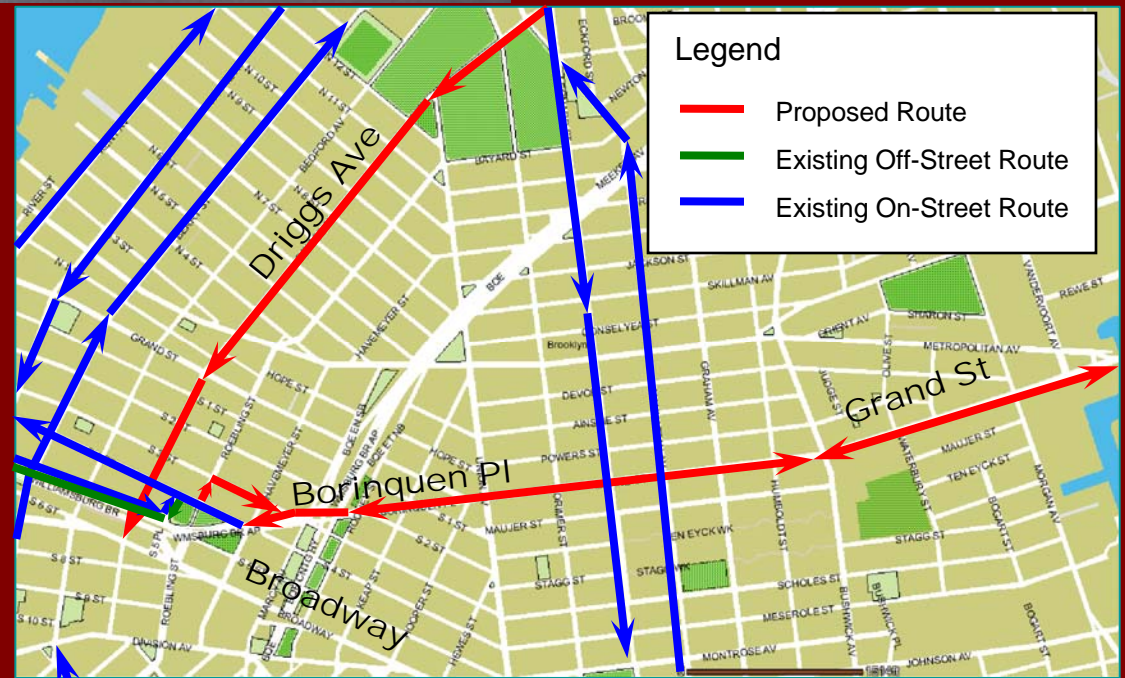


Planned Treatment for Driggs Avenue

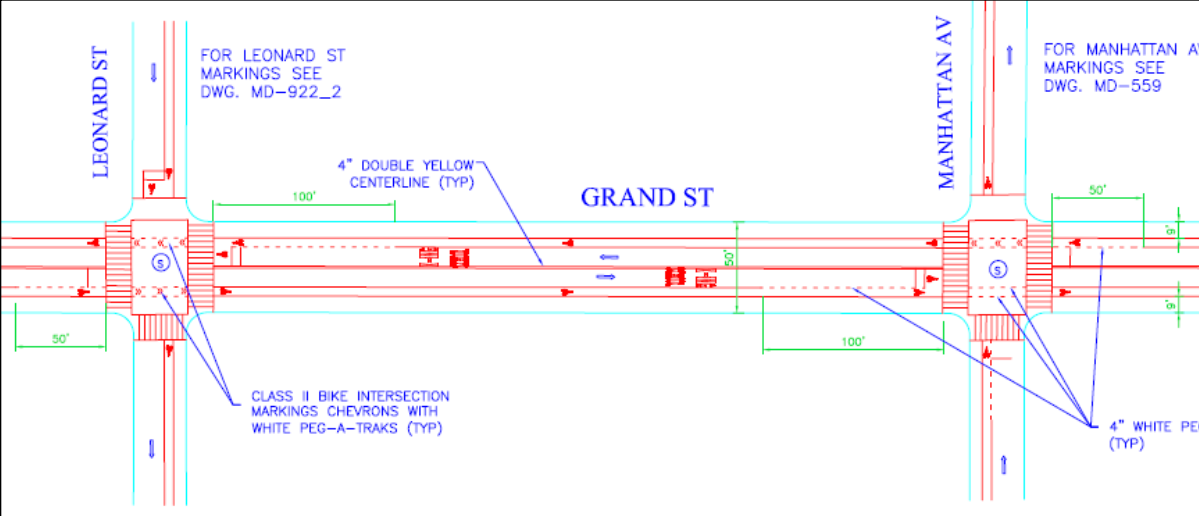
Implementation is scheduled for Spring 2009

Clinton Street, Brooklyn – Typical 5' wide, striped bicycle lane

4.6 Miles of bicycle routes to improve Williamsburg Bridge access

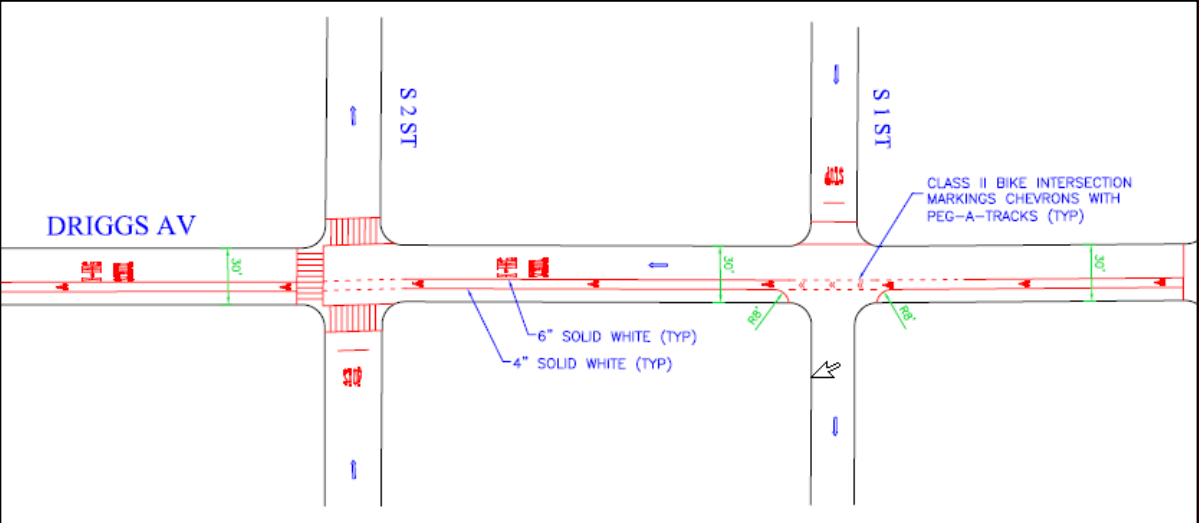


Design of Grand St and Driggs Av



Improvements:

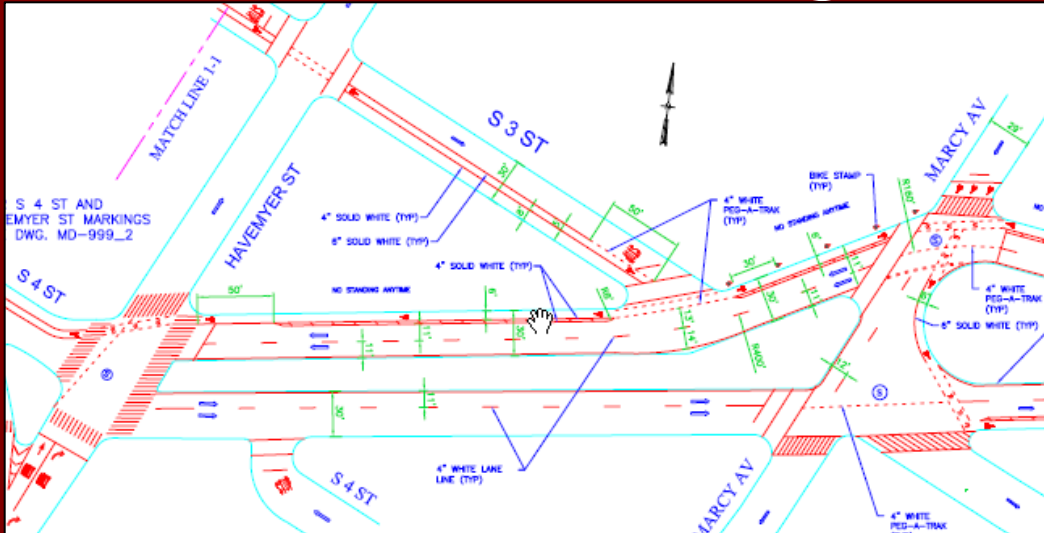
- bike lanes



Improvements:

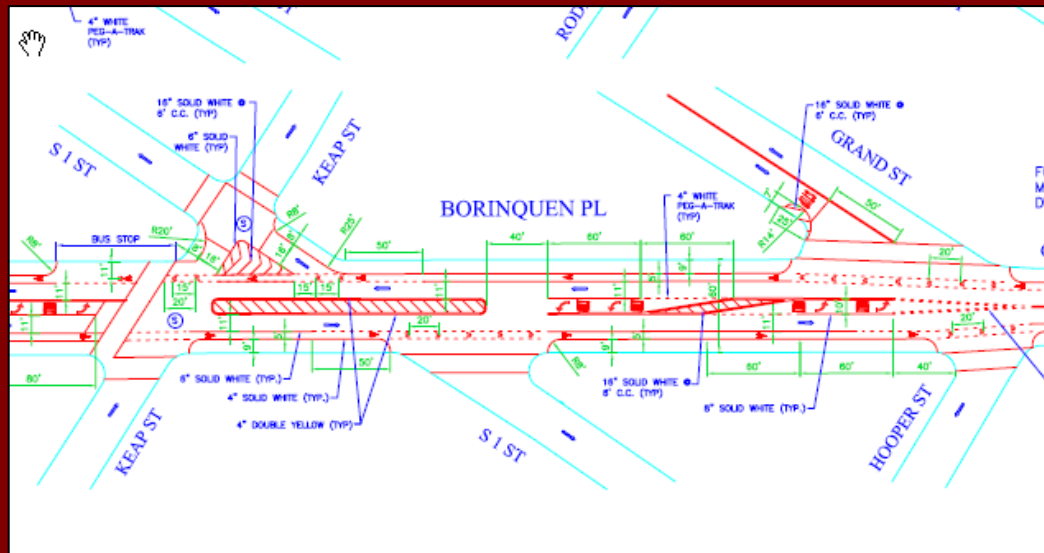
- bike lane

Design (Cont.)



Improvements:

- bike stamps on sidewalk between S. 3rd St and Marcy Av. (for eastbound direction)
- curb side bike lane (for westbound direction)
- approx. 10 parking spaces removed between Marcy Av. and Havemyer St.



Improvements:

- convert 4 travel lanes to 3 lanes
 - one lane in each direction
 - left-turn lane
- bike lanes