

# WILLIAMSBURG BRIDGE APPROACH TRAFFIC CONCERNS

Traffic Town Hall

January 2018

---

# Recent projects around Williamsburg Bridge approach



# DOT'S RECENT PROJECTS

2007

- Grand Street Road Diet, 4 to 3 with bike lanes

2008

- Pedestrian refuge islands added on Grand at Clinton, Pitt, & Willett St
- Clinton St bike facility
  - Converted Clinton from Delancey to Grand to two-way from one-way NB
  - Added bike lanes between Grand and E Broadway
  - Sharrows added between Delancey and Grand
  - Northside bike lane added between Delancey and E Houston



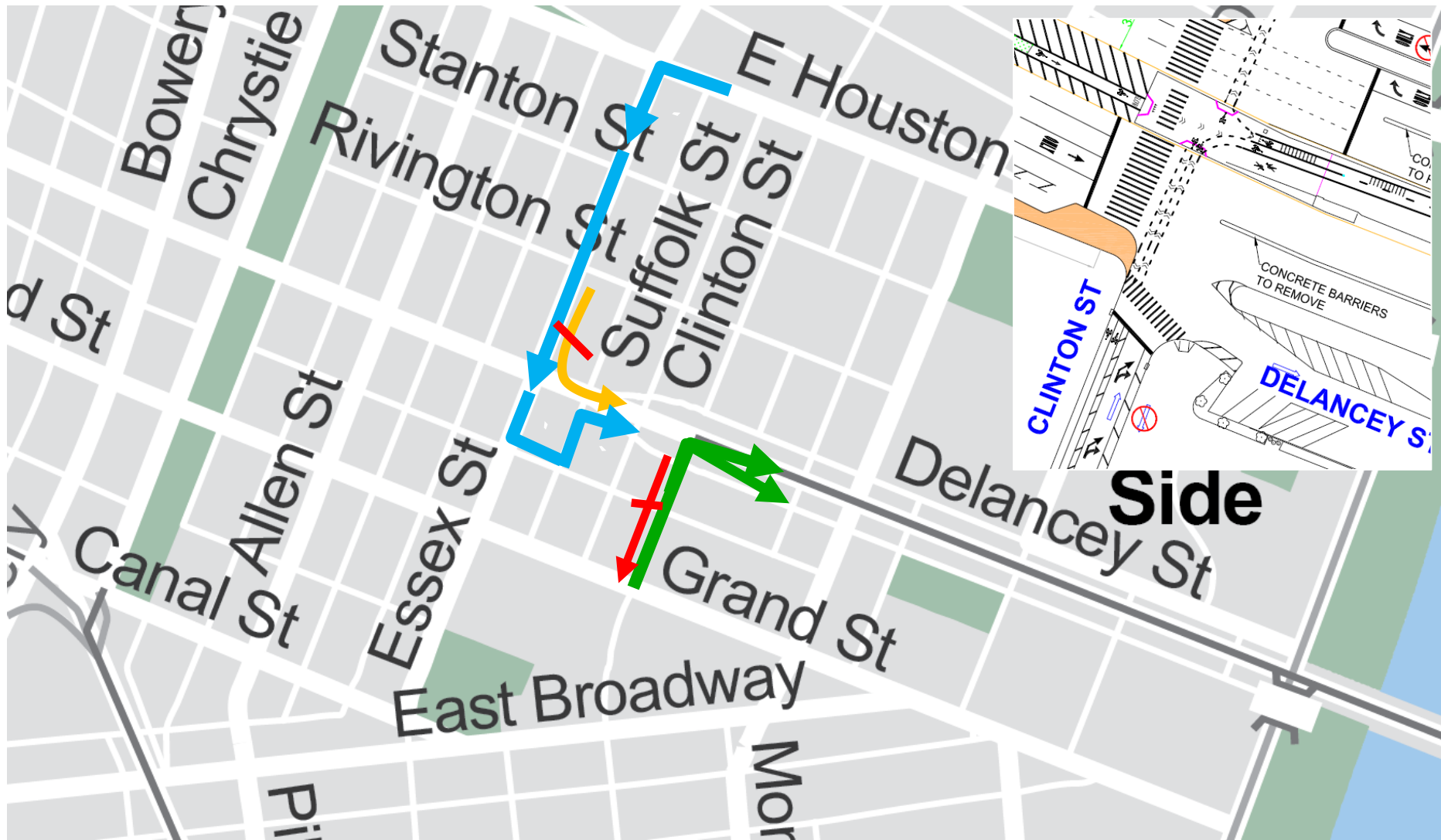
# DOT'S RECENT PROJECTS

## 2012 Project

- 14 curb extensions added along Delancey
- Left turn from Essex onto Delancey banned
- Travel lane alignment improvements along Delancey
- Clinton St
  - Bridge access opened (signed route was from Grand to Norfolk) to allow easier and conflict-free access to the bridge
  - Converted Clinton between Grand and Delancey to one-way NB & added two-way bike facility
- Reallocated excess roadway space on Delancey into plaza space



# DOT'S RECENT PROJECTS: 2012 ACCESS MODIFICATIONS

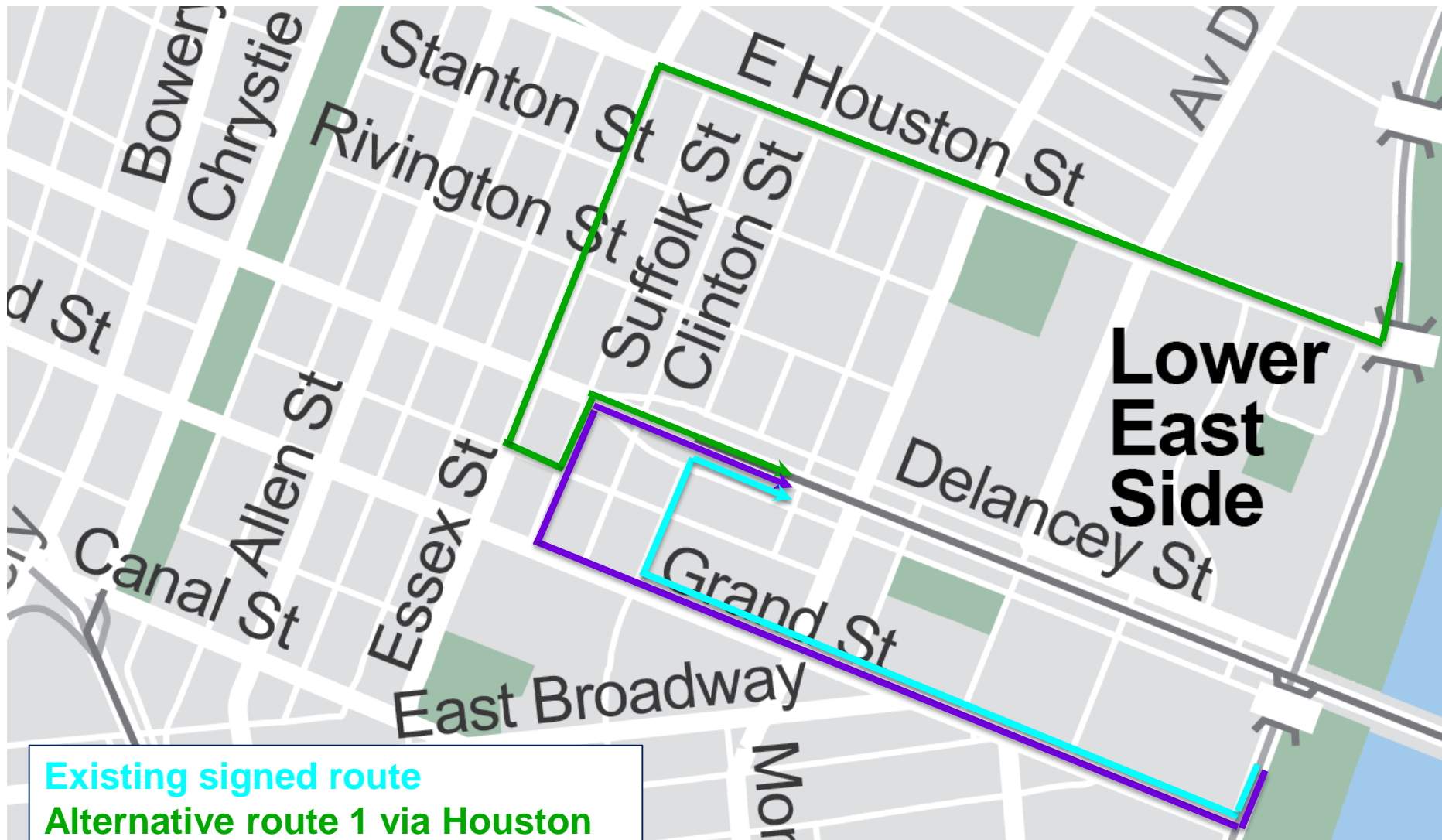


# DOT'S RECENT PROJECTS

## 2013-2014

- Issues:
  - Bridge-bound vehicles on Clinton back up through Grand St intersection
  - Long queues on Grand and Clinton
  - Pedestrians having difficult time crossing Grand St due to traffic
- Mitigation:
  - Increase the amount of green signal time for N/B Clinton
  - Add 2<sup>nd</sup> W/B travel lane on Grand to allow vehicles to bypass the right turning queue
    - Extended turn bay back to Pitt to improve ability to bypass queue
    - Install guide signs along Grand to alert motorists to alternate bridge route via Norfolk
  - Install guide signs along FDR Drive and Houston to alert motorists to alternate routes to Williamsburg Bridge

# DOT'S RECENT PROJECTS: 2014 ACCESS MODIFICATIONS

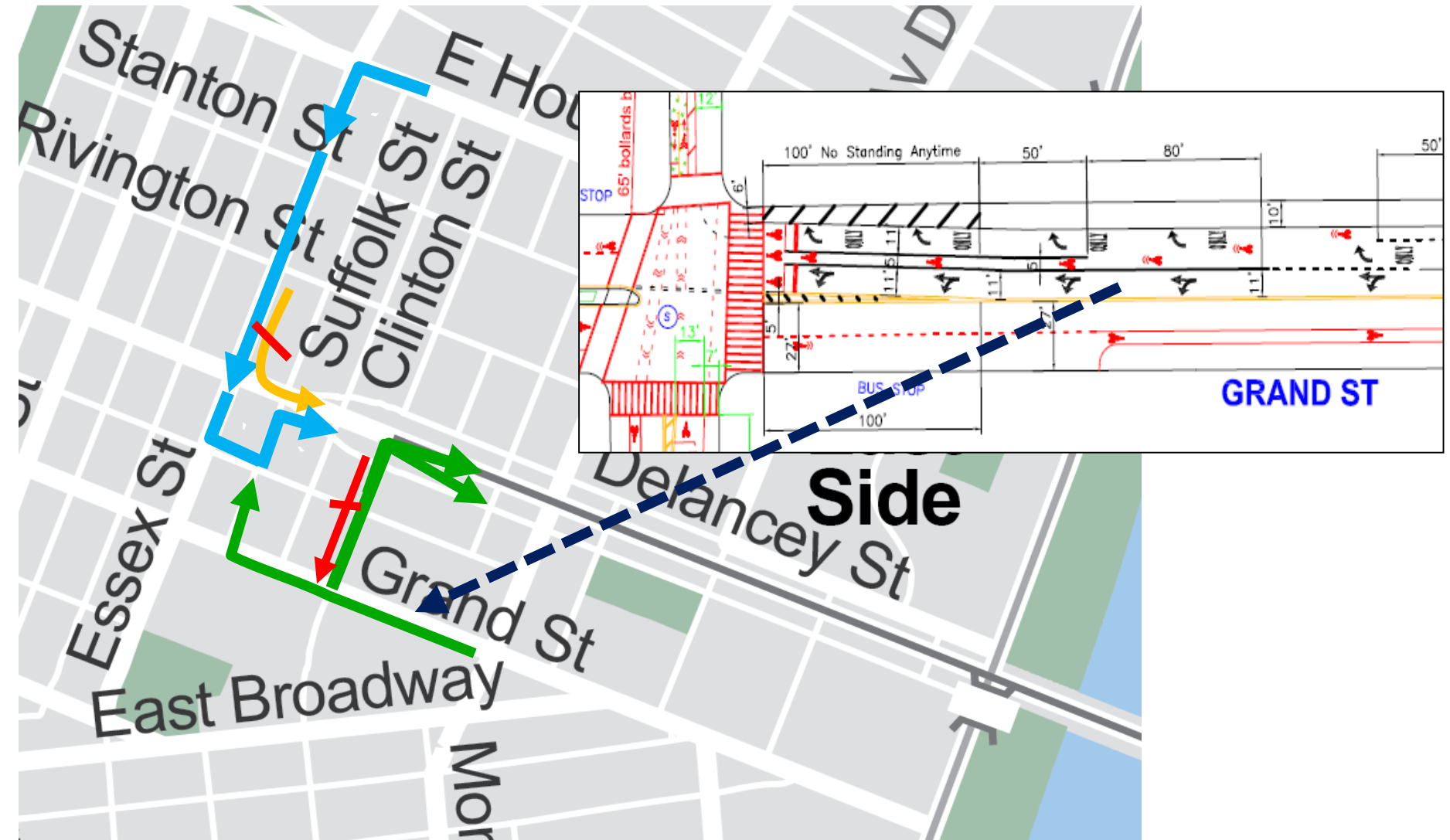


Existing signed route

Alternative route 1 via Houston

Alternative route 2 via Norfolk

# DOT'S RECENT PROJECTS: 2014 ACCESS MODIFICATIONS



# DOT'S RECENT PROJECTS

## 2013-2014 Project Mitigation Results

1. Processing over 10% additional volume during peak periods → *increased capacity*
2. Signed diversions are moving some vehicles to alternate routes → *reduced demand*
3. Signed diversions allow drivers to make better informed decisions approaching Williamsburg Bridge
4. Improved signal coordination between Grand and Clinton minimizes spillback through the intersection



# DOT'S RECENT PROJECTS

## 2015 & 2016

- Two-way bike path installed on Clinton between Grand & South (2015)
- Added new signal at Clinton and South (2015)
- Installed midblock crosswalk on Clinton between Grand and East Broadway (2016)



# DOT'S RECENT PROJECTS

## 2017 Mitigation

- Issue: Continued traffic congestion on Grand St causing diversions onto surrounding network including E Broadway and Clinton St (both N & S of Grand)
- Mitigation
  - Traffic signal progression adjusted on Houston from FDR Drive to Avenue C and on Essex between E Houston and Rivington to improve travel times on the ALT route to the bridge
  - Majority of construction on Houston is complete
- Results: Inconclusive but generally ineffective at changing travel patterns or improving travel times.



# DOT'S RECENT PROJECTS: 2017 MITIGATION



---

## Community Feedback and Next Steps

2

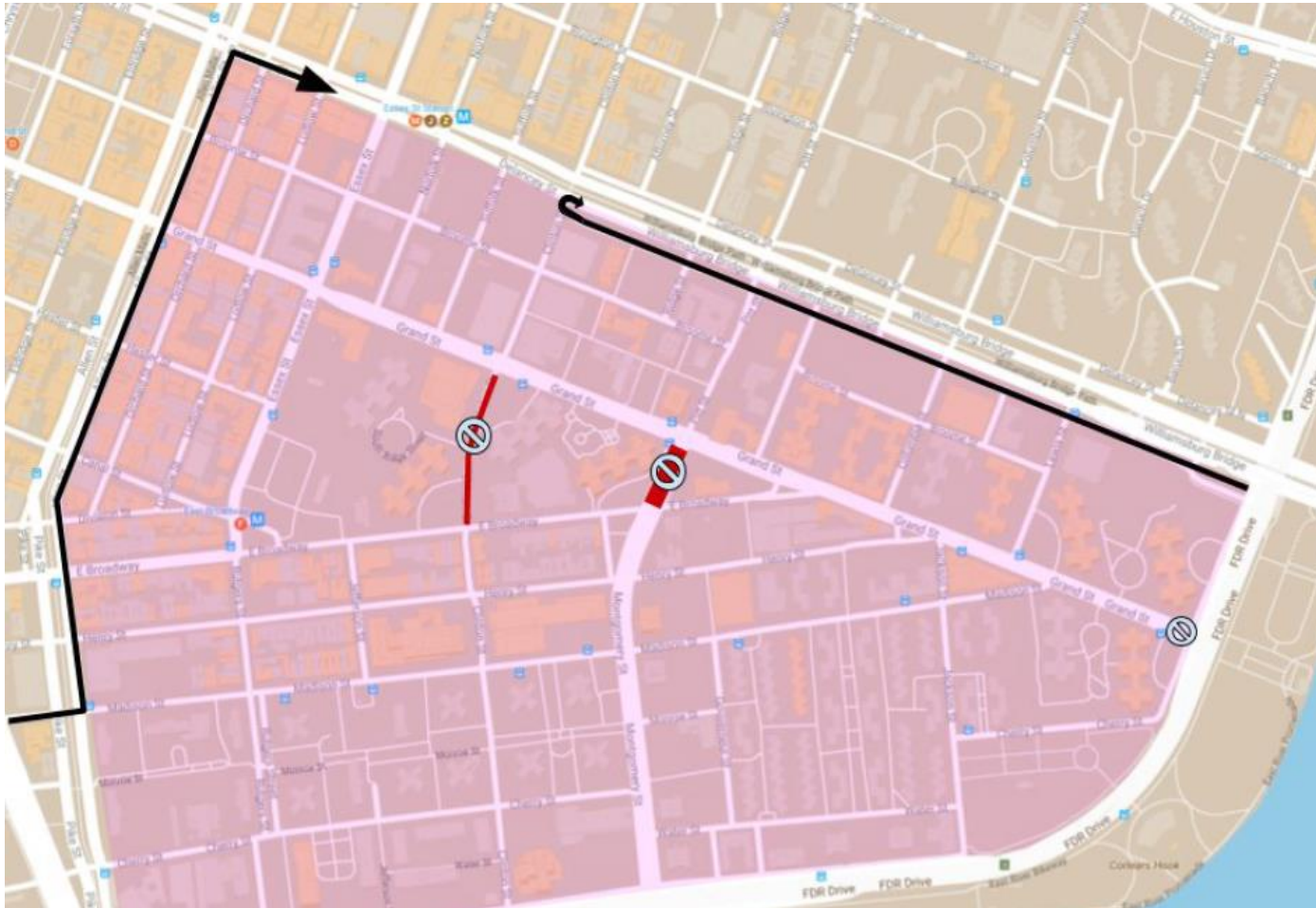
# NEXT STEPS: SHORT TERM ACTIONS

- ❑ Walk through with community – Complete
- ❑ Remove construction barrels on Broome Street – Complete
- ❑ Complete review of signage in area to ensure guide signage is accurate (community request) - Complete
- ❑ Add quick curb on Grand Street between through and left turn lanes on approach to Clinton (community request) – Under investigation
- ❑ Clarify bridge wayfinding signage to encourage using Norfolk for bridge access from Grand – Under investigation
  - Need to coordinate with Essex Crossing construction
- ❑ Move VMS ‘no honking’ sign further upstream of Clinton on Grand – NYPD
- ❑ Add traffic agent at Clinton and East Broadway (community request) – NYPD

# NEXT STEPS: LONG TERM ACTIONS

- ☐ Investigate restoration of Norfolk as primary bridge access from Grand
- ☐ Investigate using Suffolk as additional bridge access from Grand
- ☐ Investigate storing vehicles on redesigned FDR exit ramp
- ☐ Investigate using Delancey St South Service Road as main access point for bridge traffic from FDR exit (community request)
- ☐ Investigate converting Clinton between Grand and E. Broadway to one-way southbound (community request)
- ☐ Review Broome St direction and travel patterns to improve neighborhood circulation
- ☐ Investigate whether a protected left turn could be added to Essex/Delancey

# NEXT STEPS: LONG TERM ACTIONS



Long-term options

From “Recommendations for Grand & Clinton traffic study”  
Grand Street Dems, January 2018.

# OTHER CONSIDERATIONS

- L Train shutdown
- Delancey St bicycle network project
- Essex Crossing: Ongoing construction is ongoing requiring various lane closures and diversions
  - Impacts overall travel times in area
  - Suffolk St 32 month closure
  - Norfolk reduced to one lane for duration of construction

# THANK YOU!

## Questions?



NYC DOT



NYC DOT



nyc\_dot



NYC DOT