



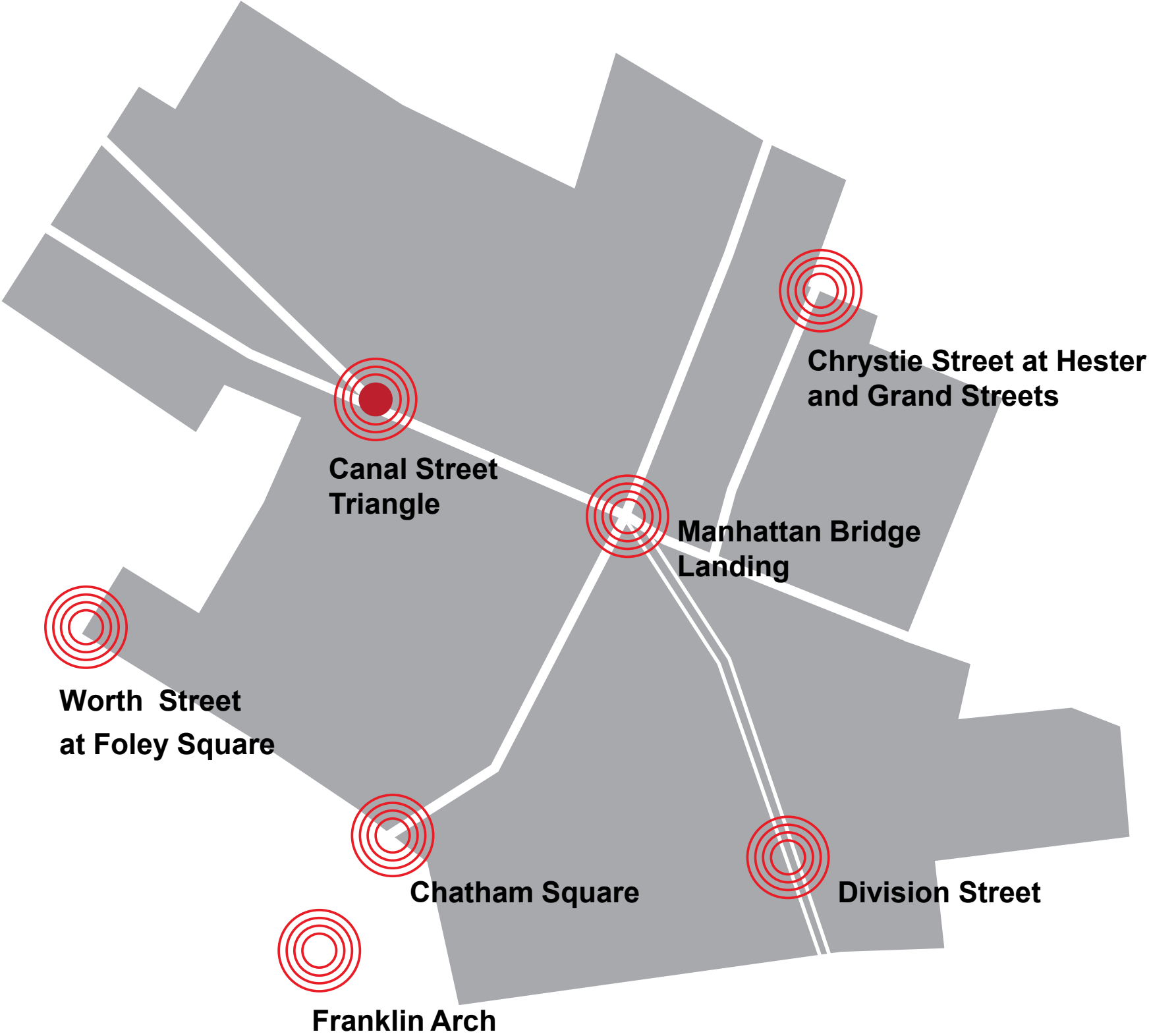
唐人街
GATE
WAYS
→ TO ←
CHINA
TOWN
之道

CANAL
STREET
TRIANGLE

**CONCEPTUAL
DESIGN**

COMMUNITY STAKEHOLDER
MEETING
DECEMBER 2, 2020

GATEWAYS TO CHINATOWN



GATEWAYS TO CHINATOWN: DECADES IN THE MAKING



CANAL STREET TRIANGLE

PROJECT LOCATION



CANAL STREET TRIANGLE

INTRODUCTION



CANAL STREET TRIANGLE

HISTORIC CONTEXT



EXISTING KIOSK: HISTORY



- Originally funded by the Lower Manhattan Development Corporation (LMDC) post 9/11 as part of an overall effort to improve tourism in Chinatown.
- Completed in late 2004
- Managed by the Chinatown Partnership Local Development Corporation
- Updated with WalkNYC map in 2017
- Retrofitted with exterior screens in 2019

COMMUNITY OUTREACH AND PRIORITIES

PUBLIC DESIGN FORUM (2016)



REQUEST FOR PROPOSALS (2017)



WAYFINDING AND ORIENTATION



CULTURAL IDENTITY



**COMMUNITY INFORMATION AND
DIGITAL CONNECTIVITY**

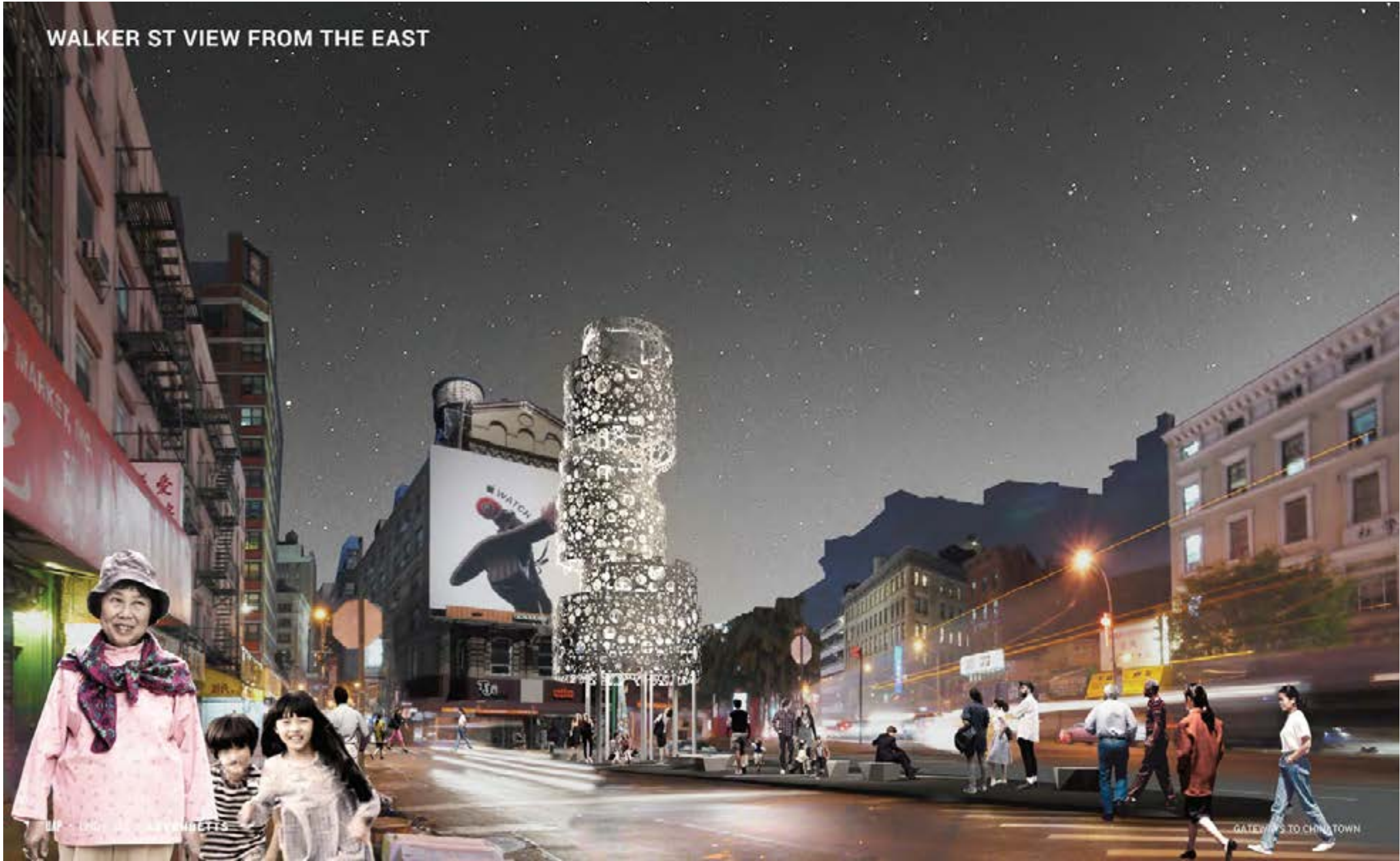
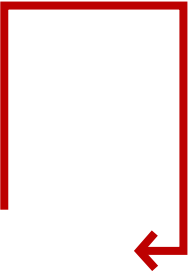


GREEN SPACE



SOCIAL INTERACTION

RFP RESPONSE: 2019 UAP DESIGN PROPOSAL (REFERENCE ONLY)



COMMUNITY OUTREACH AND PRIORITIES (2018-2019)



DESIGN GOALS AND OBJECTIVES (2020/2021)



ENHANCED CIRCULATION



PLANTED BUFFER



PROGRAMMABLE SPACE

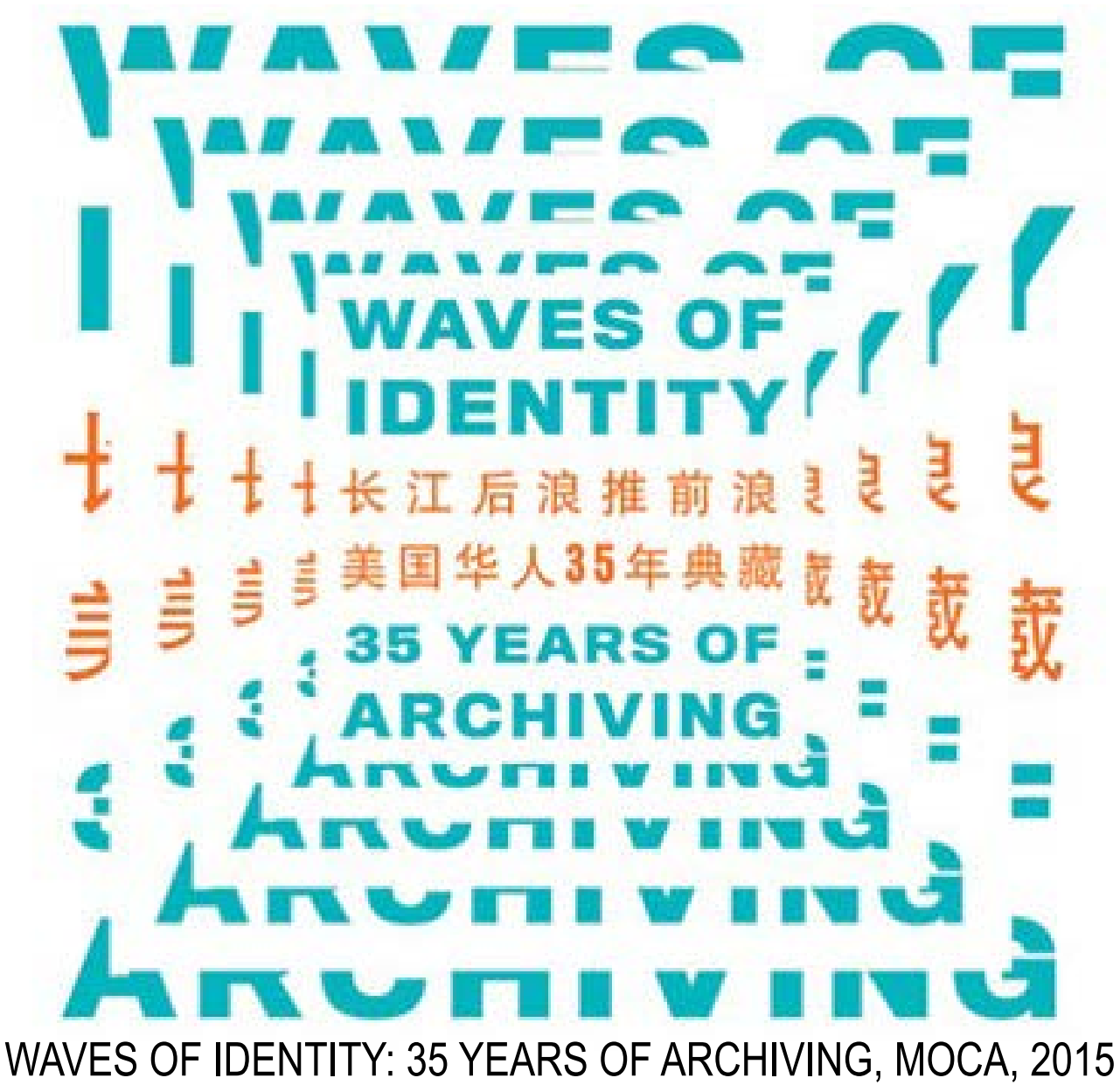


DESIGN GOALS AND OBJECTIVES (2020/2021)

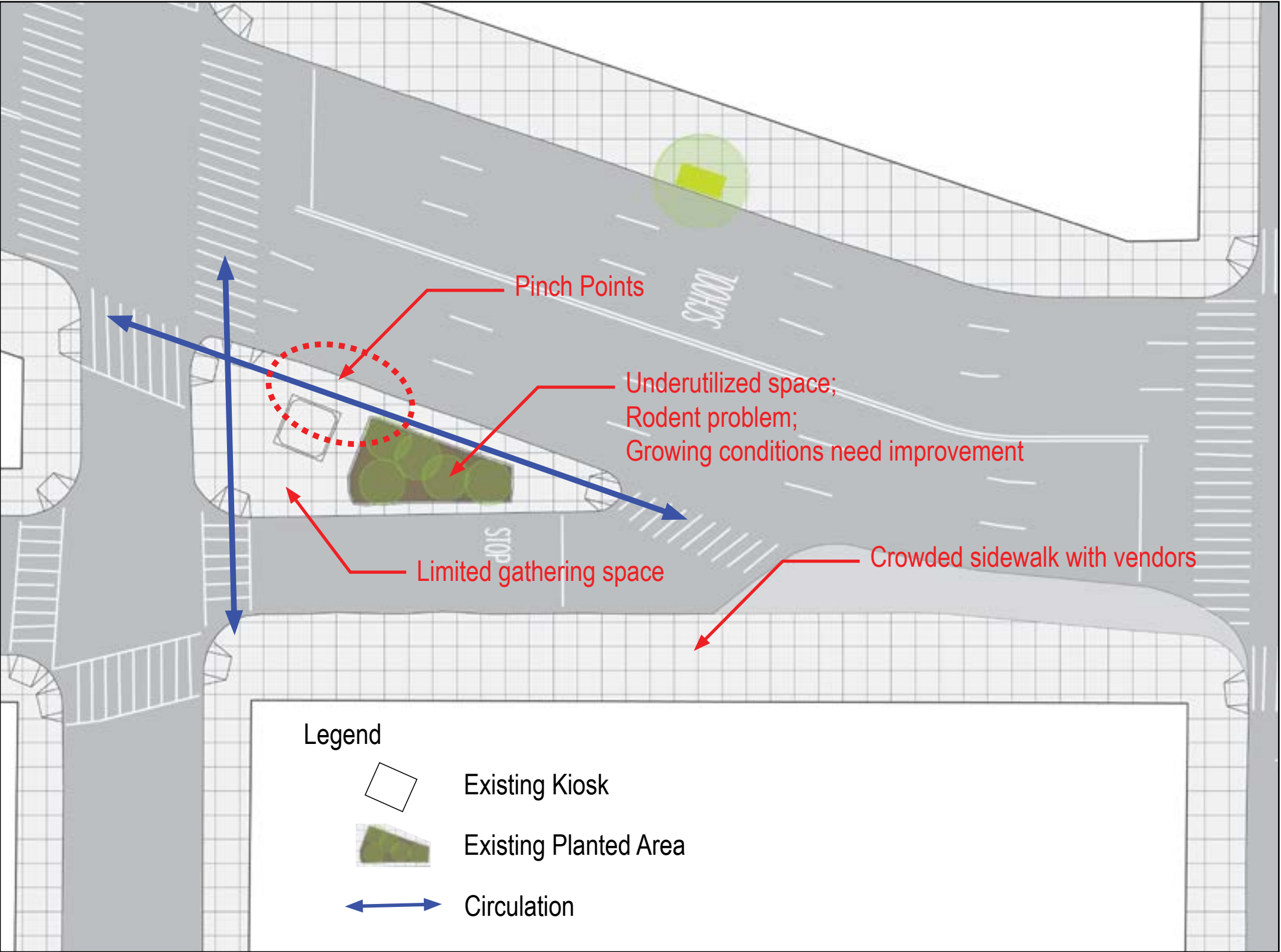
PLACE OF EXCHANGE



NEIGHBORHOOD IDENTITY



EXISTING CONDITIONS: SITE CONSTRAINTS



CANAL STREET TRIANGLE

EXISTING CONDITIONS: SITE CONSTRAINTS

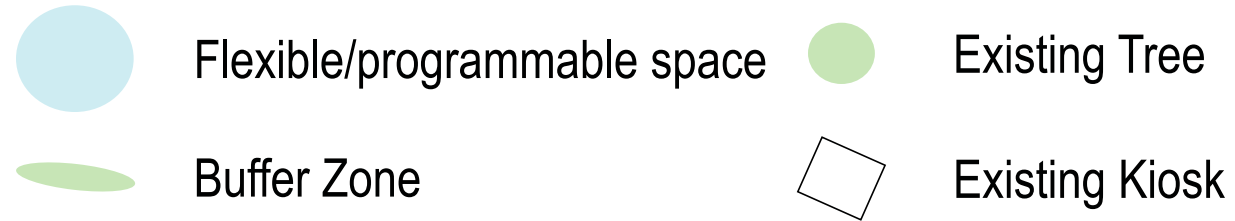


EXISTING CONDITIONS: SITE CONSTRAINTS

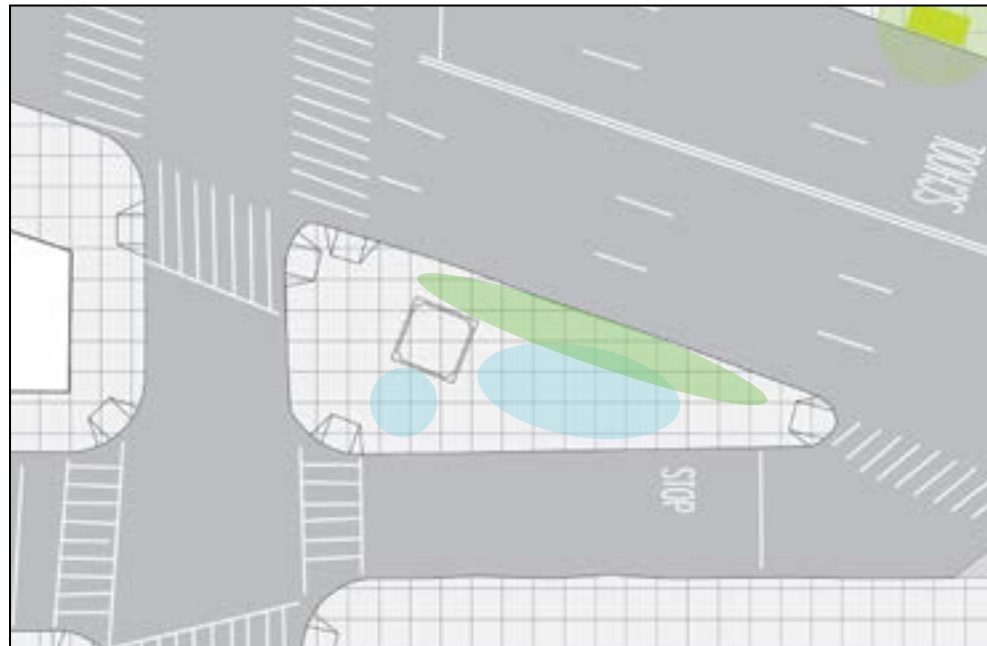


CONCEPTUAL DESIGN OPTIONS

Legend

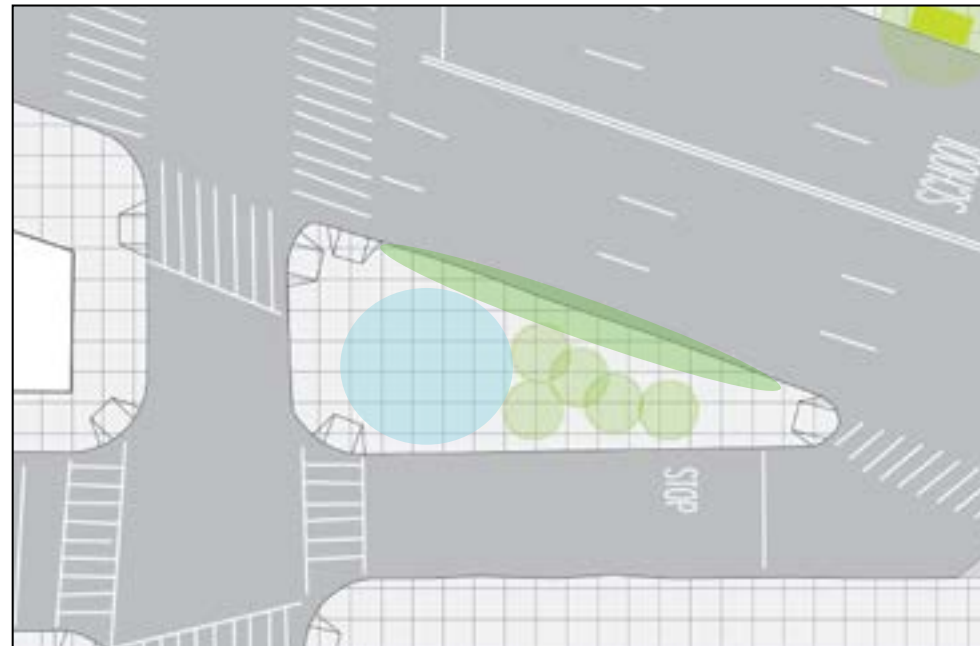


KIOSK



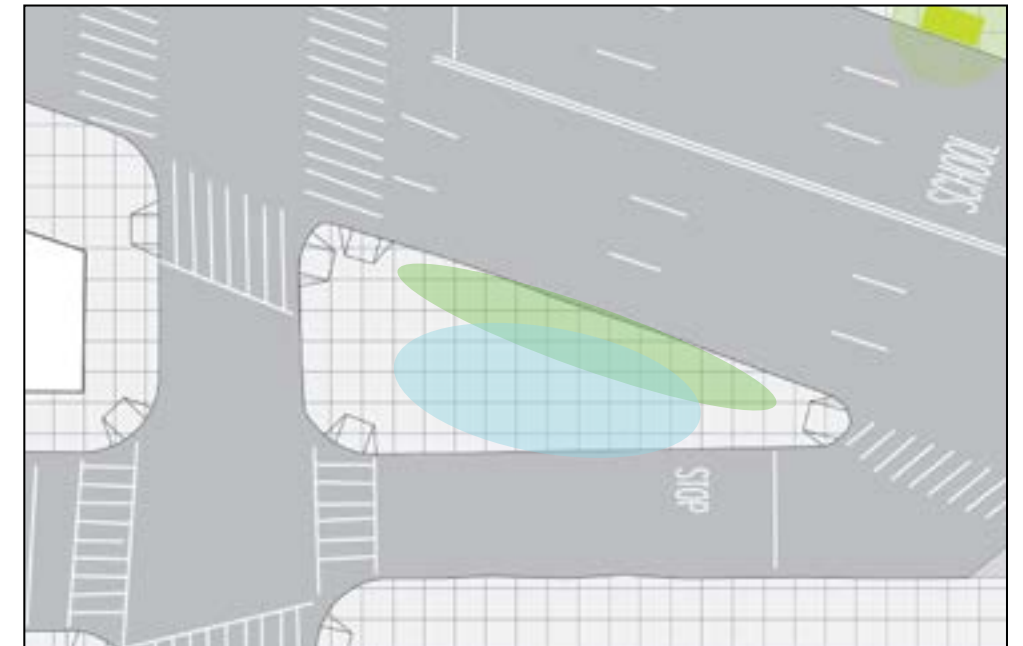
- Preserve existing kiosk
- Buffer integrated with existing kiosk creates a respite from busy Canal Street
- Multiple flexible/programmable spaces created while improving circulation
- Preserve existing kiosk to provide information and other community services

BOSQUE



- Preserve existing trees
- Planted buffer that could include interpretive signage, history, or other programming
- Existing trees are preserved, but create a space for gathering and circulation
- Large programmable space now afforded with the removal of the kiosk

PROCESSION



- Clear the triangle
- Larger buffer afforded with the removal of the trees and kiosk. Can include interpretive signage, history, or other programming
- Large flexible/programmable space

CONCEPTUAL DESIGN OPTIONS: KEY THEMES

Planted Buffer

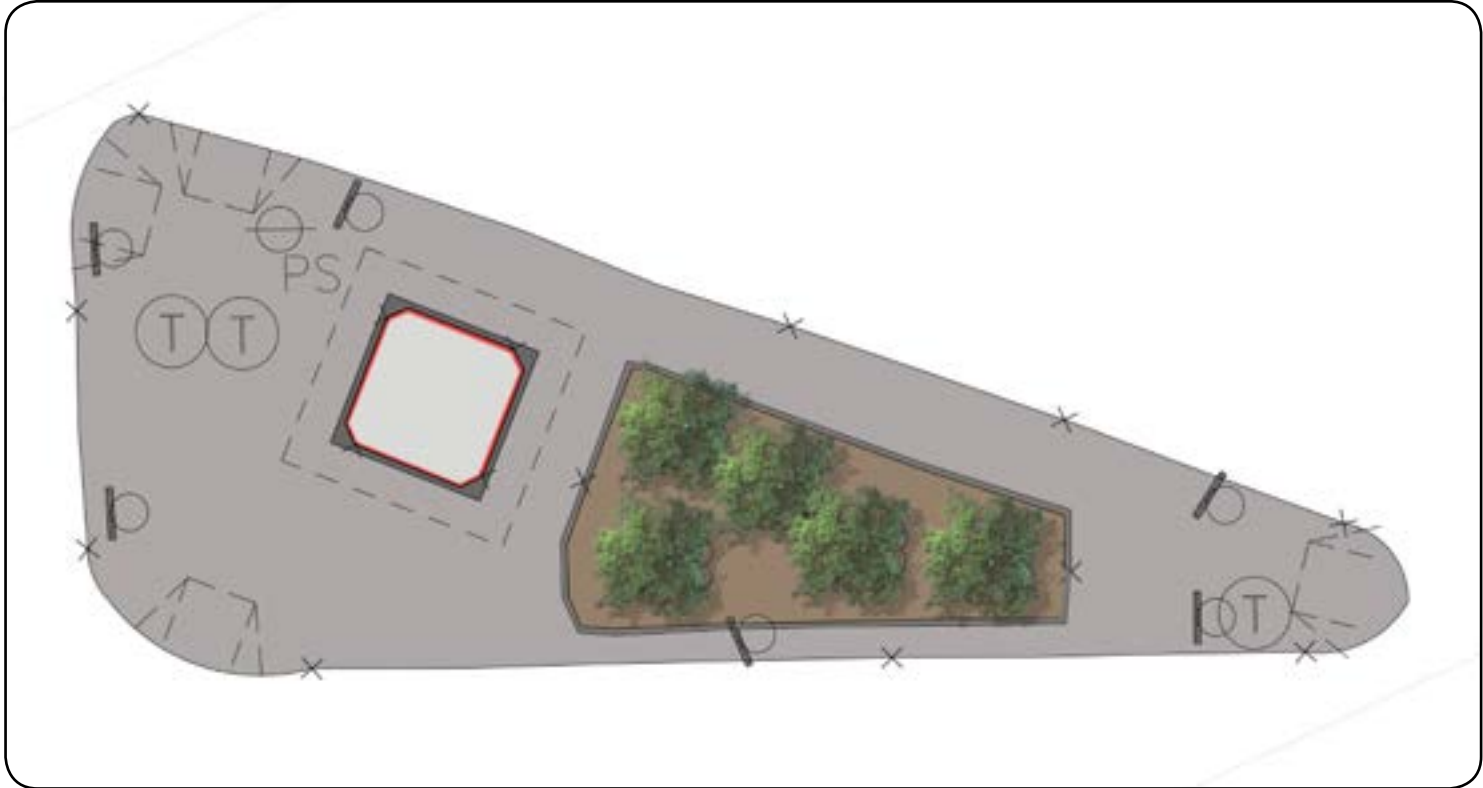


Storyboard

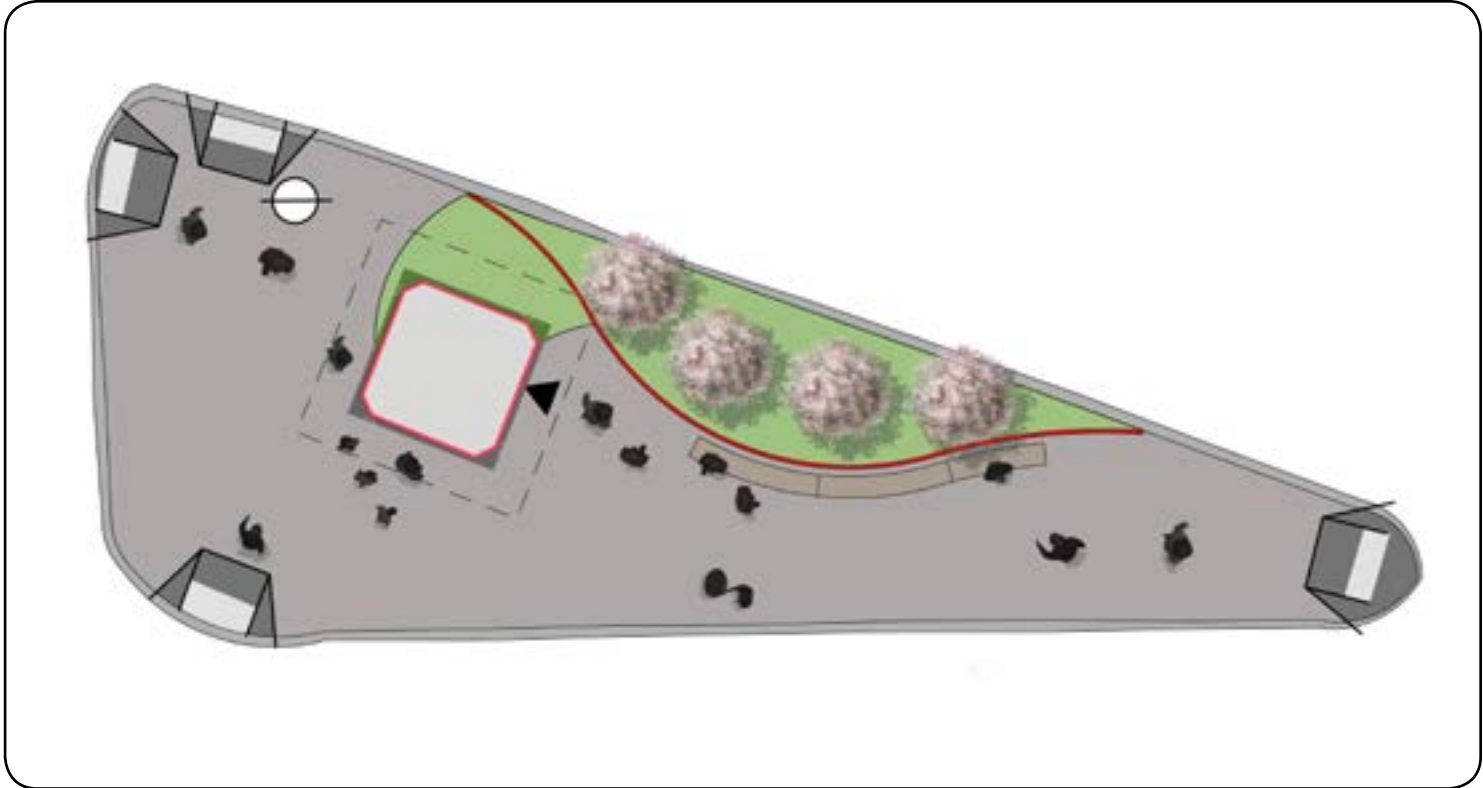


CANAL STREET TRIANGLE

CONCEPT DESIGN: KIOSK



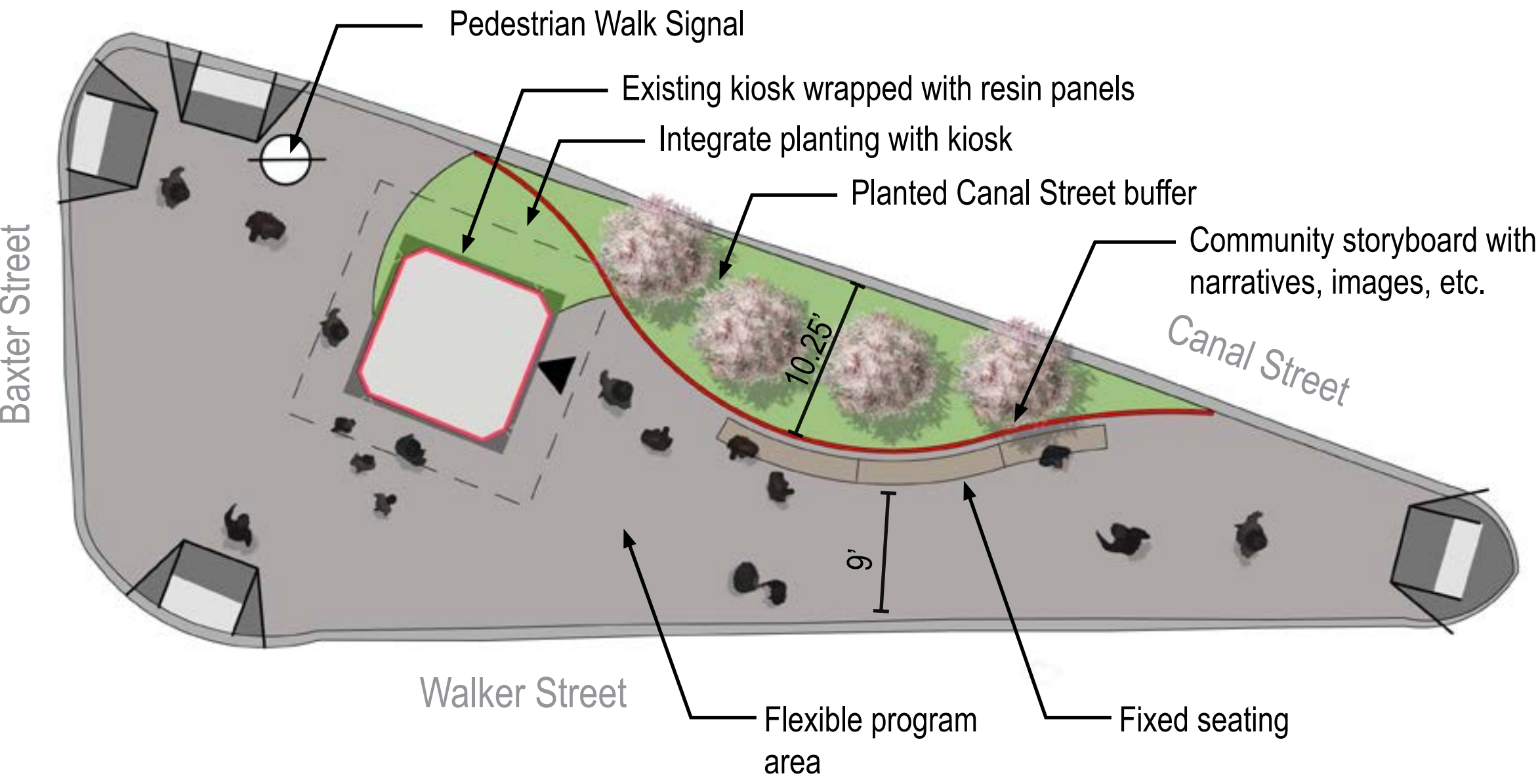
Existing Conditions



Concept: KIOSK

CANAL STREET TRIANGLE

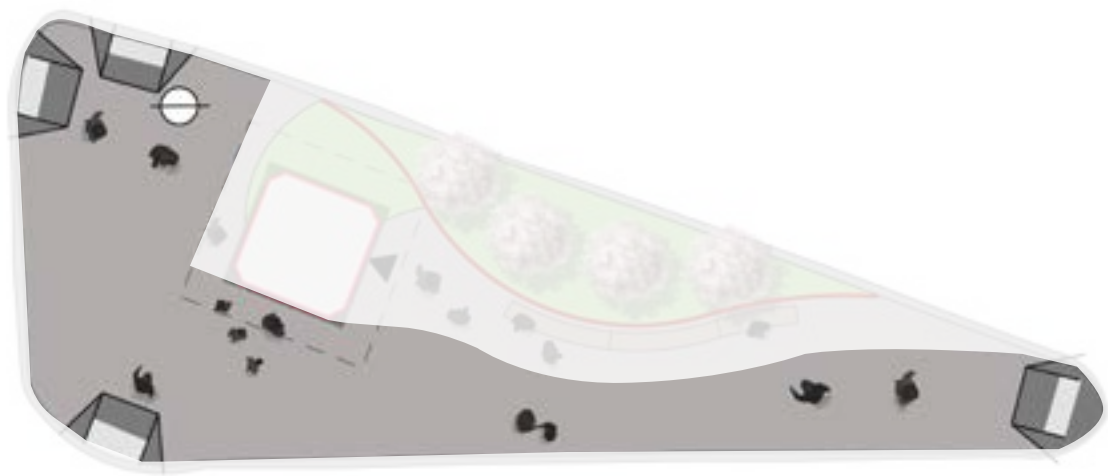
CONCEPT DESIGN: KIOSK



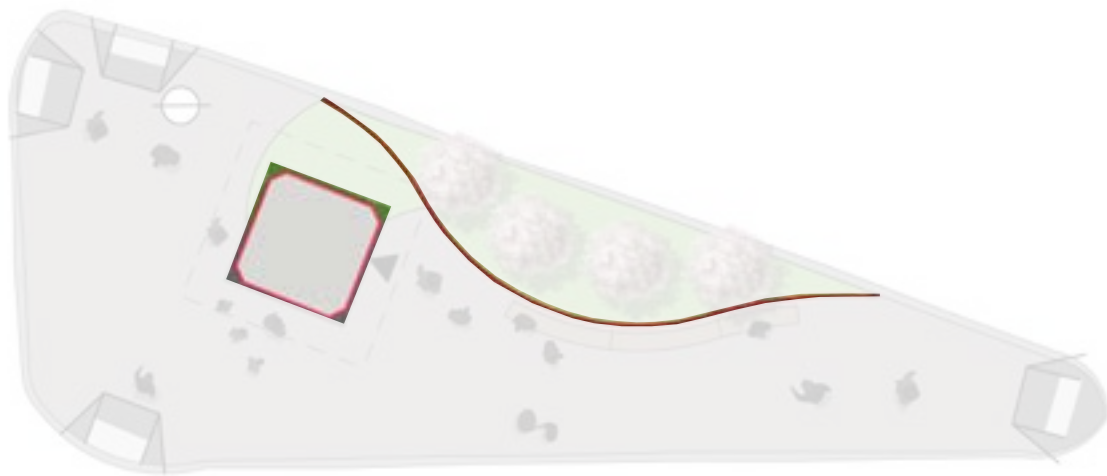
CANAL STREET TRIANGLE

CONCEPT DESIGN: KIOSK

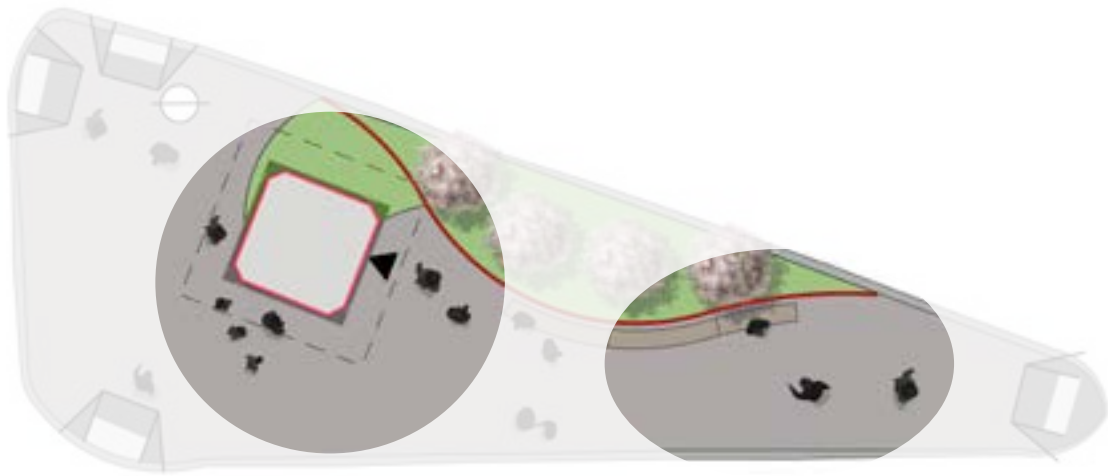
Circulation



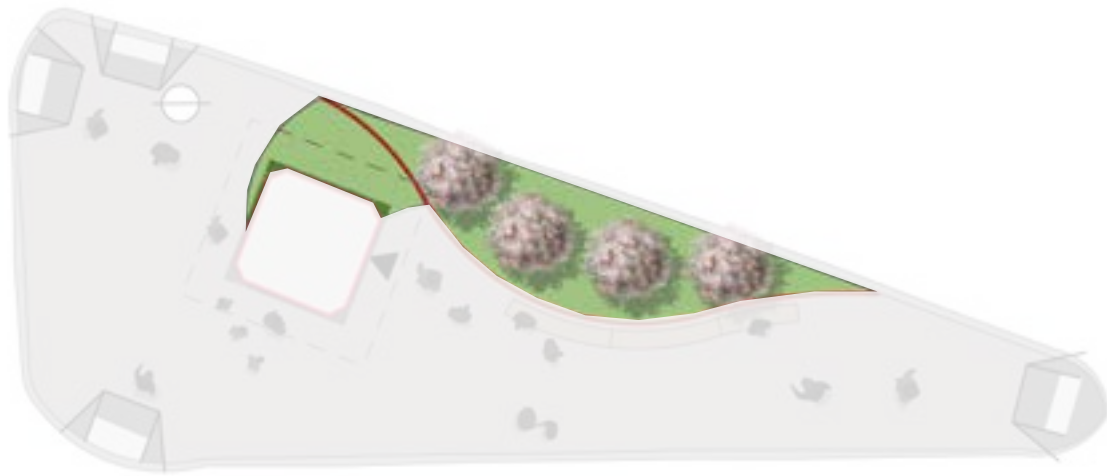
Information Exchange



Gathering Areas

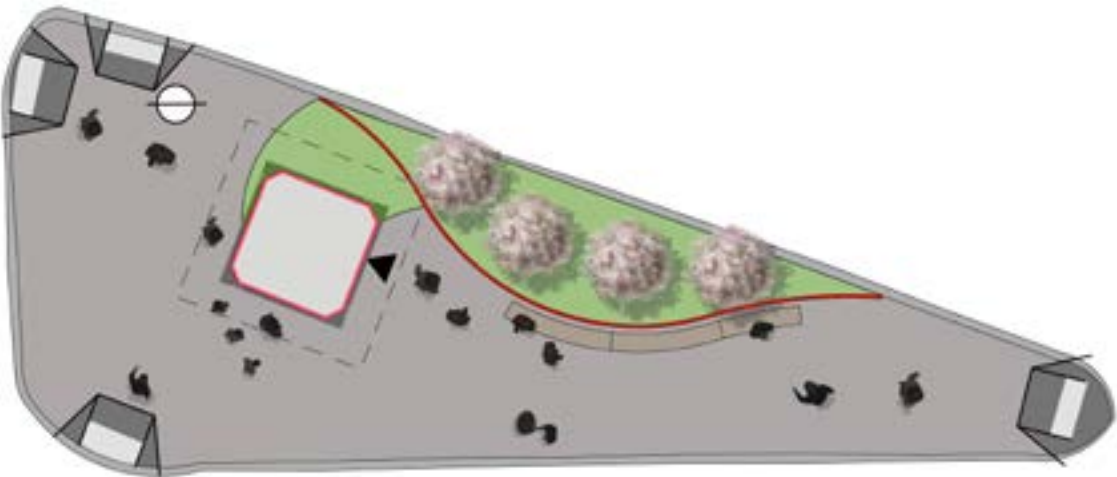


Planting/Permeable Surfaces



CANAL STREET TRIANGLE

CONCEPT DESIGN: KIOSK





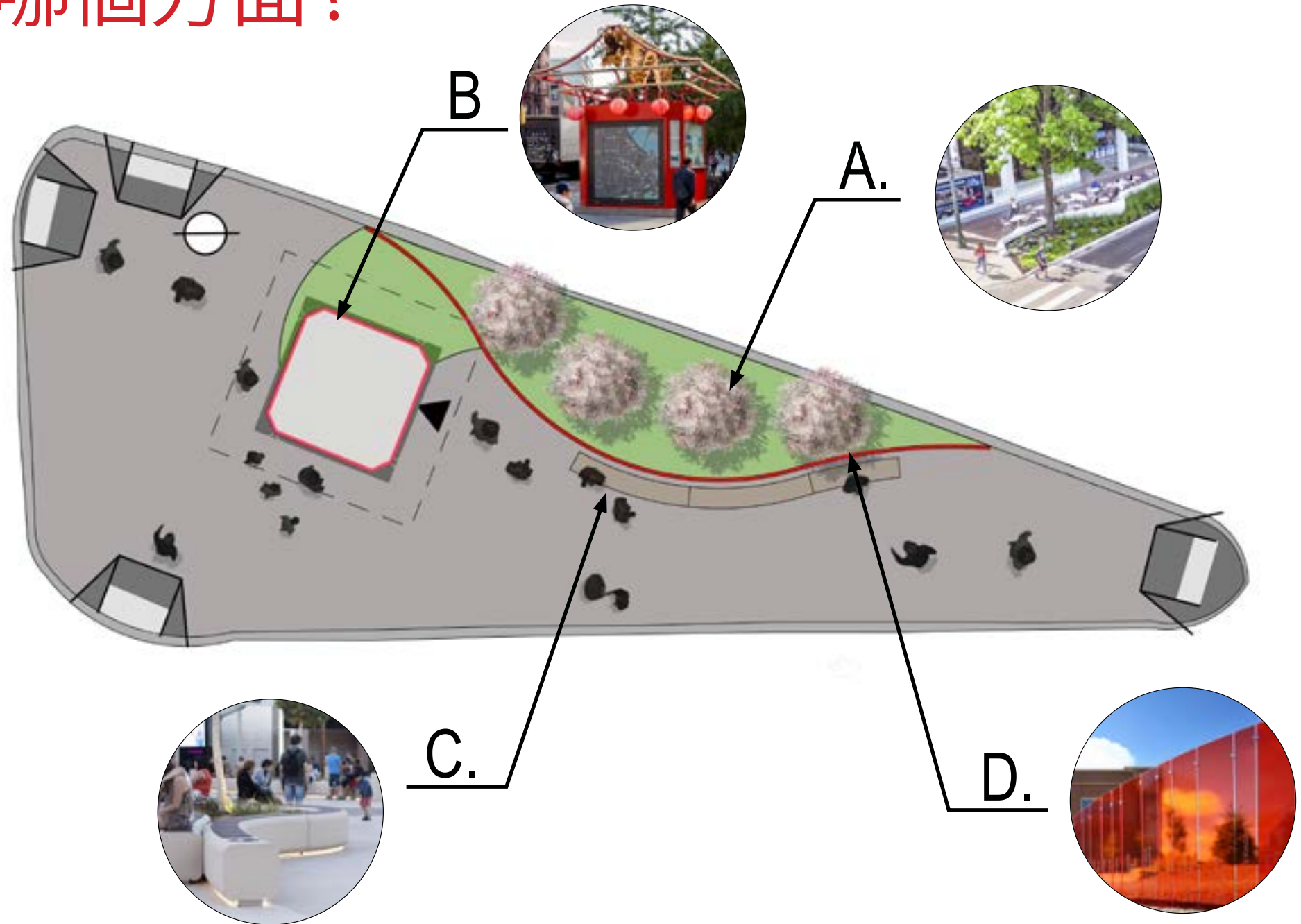
POLL QUESTION



WHAT ASPECT OF THE KIOSK DESIGN DO YOU LIKE THE BEST?

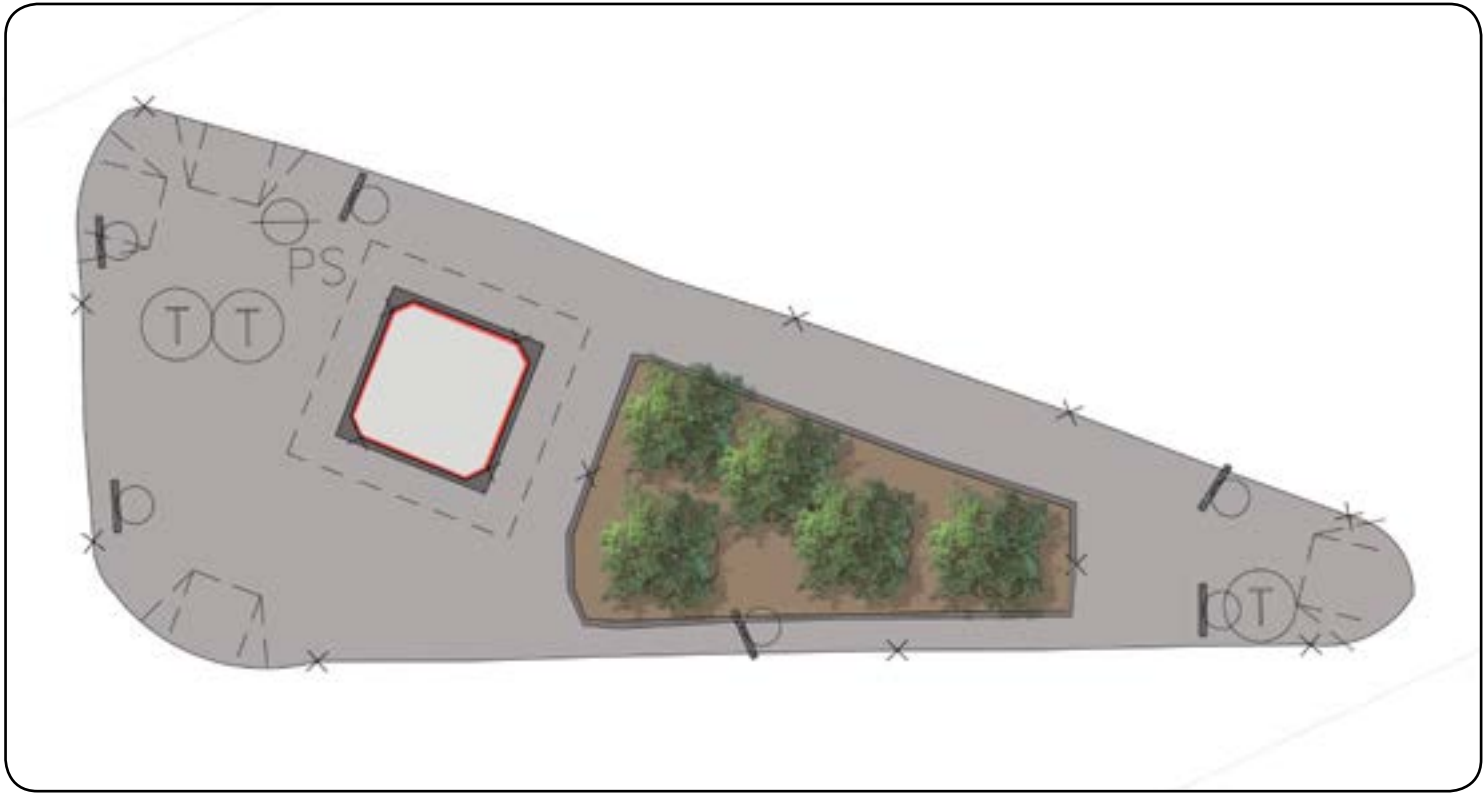
您最喜歡小亭設計的哪個方面？

- A. Planted areas
- A. 綠化種植面積
- B. Refurbished kiosk
- B. 翻新的小亭
- C. Seating
- C. 座位
- D. Storyboard panels
- D. 故事板
- E. None of the above
- E. 以上都不喜歡

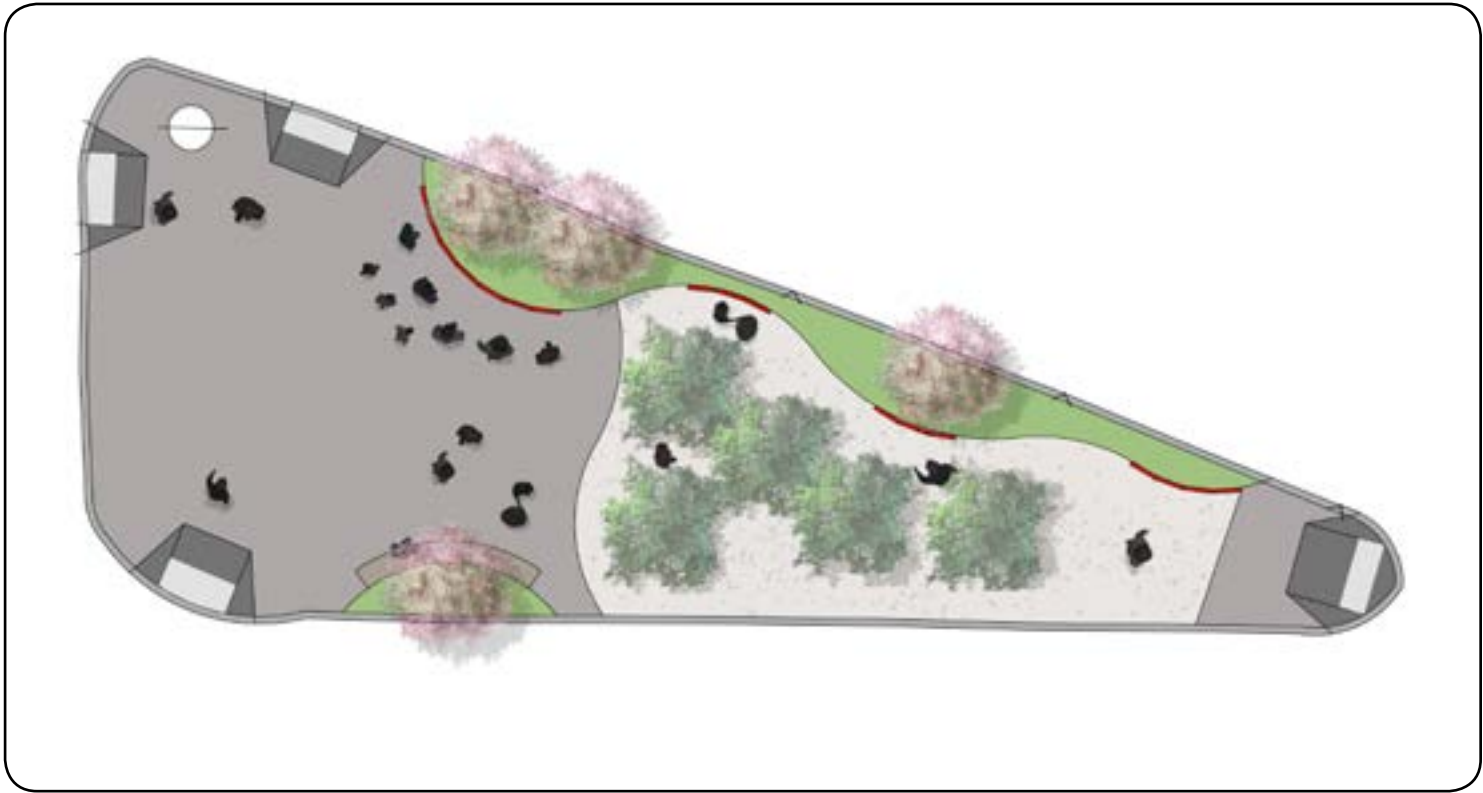


CANAL STREET TRIANGLE

CONCEPT DESIGN: BOSQUE



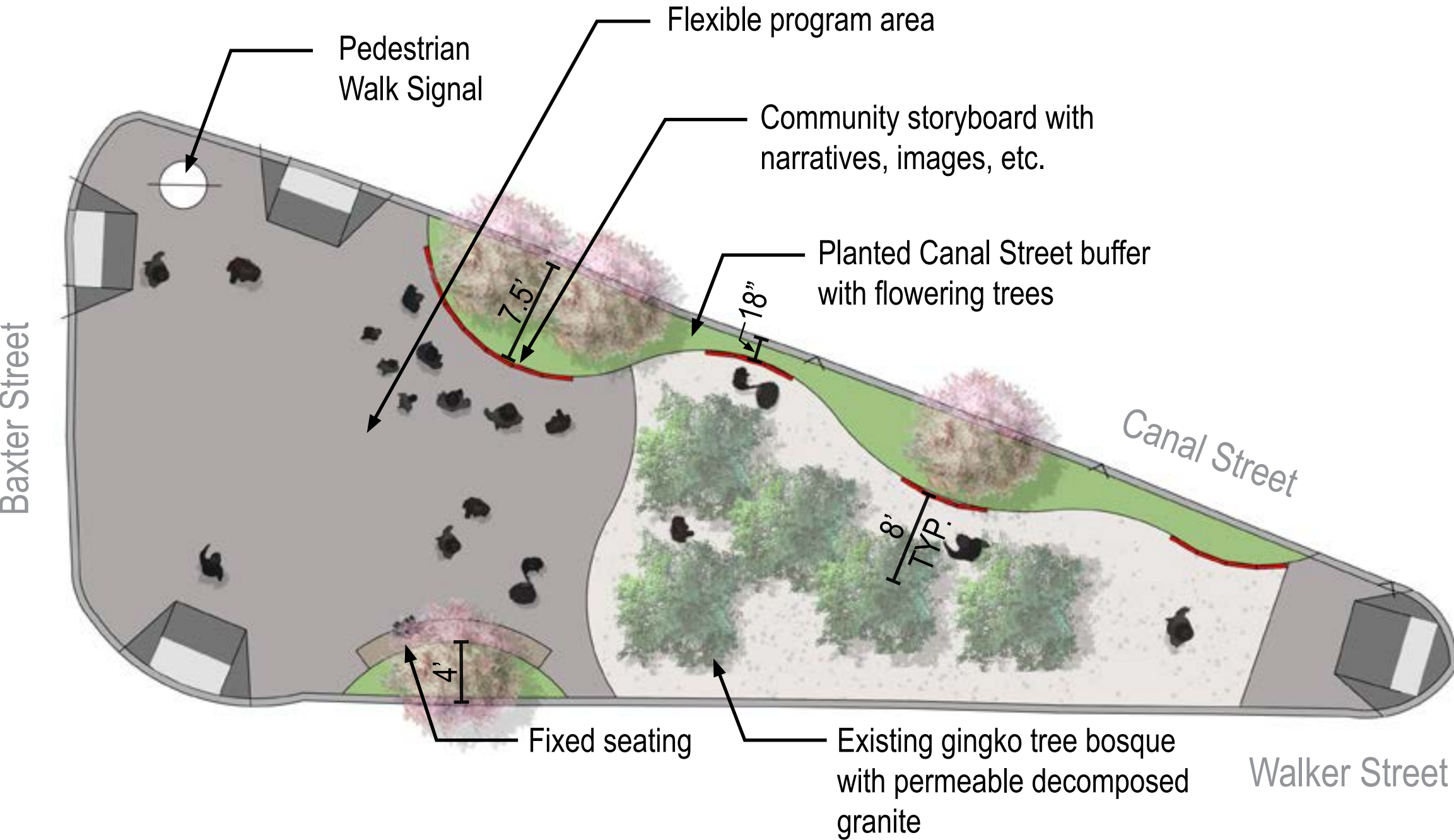
Existing Conditions



Concept: BOSQUE

CANAL STREET TRIANGLE

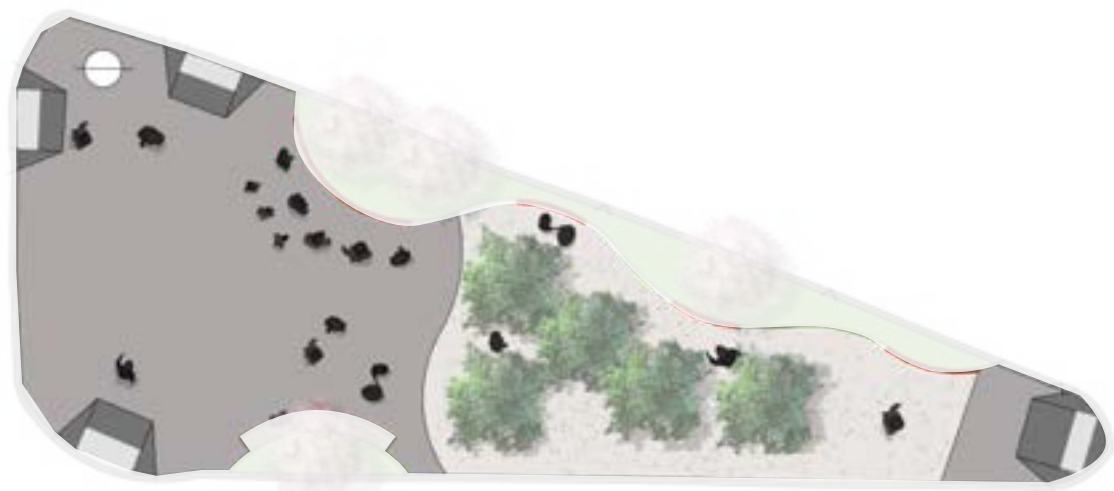
CONCEPT DESIGN: BOSQUE



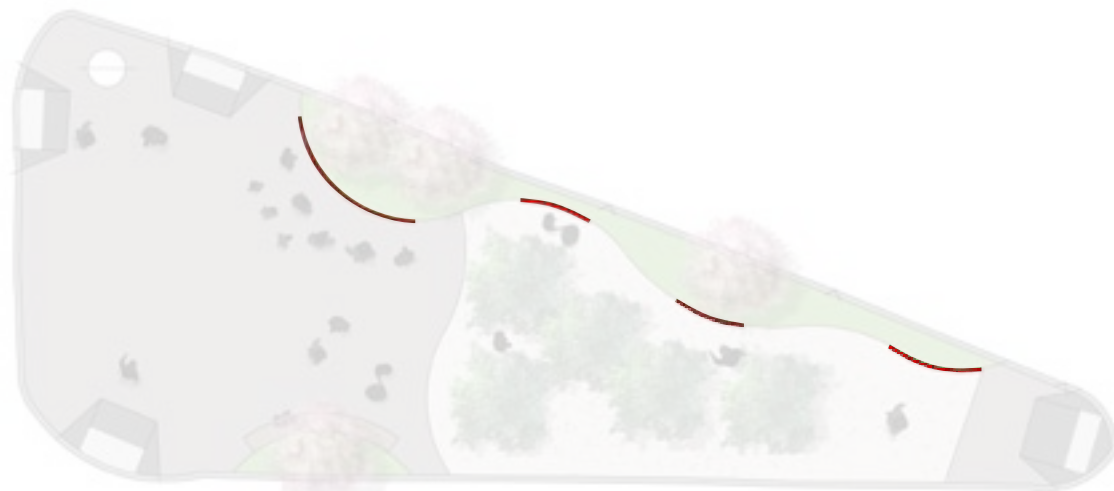
CANAL STREET TRIANGLE

CONCEPT DESIGN: BOSQUE

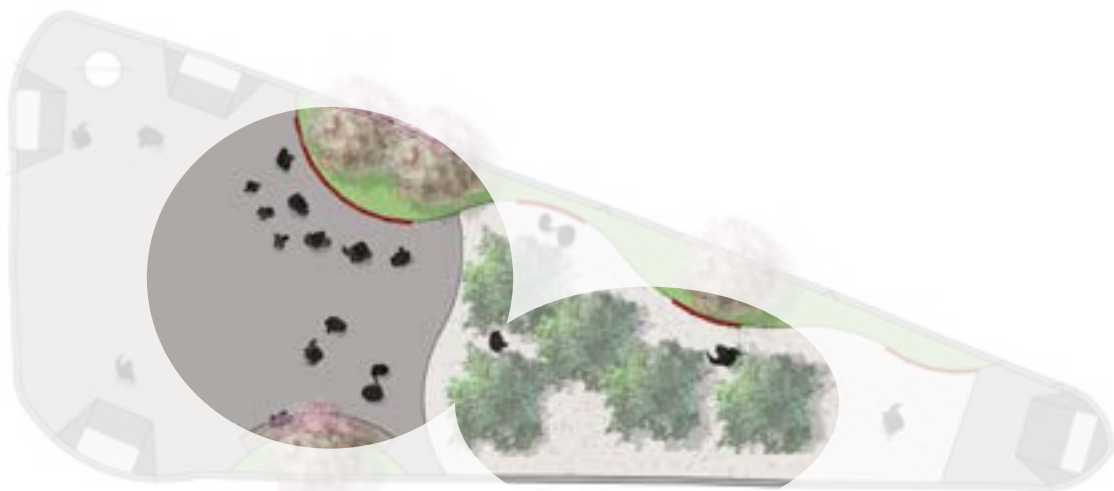
Circulation



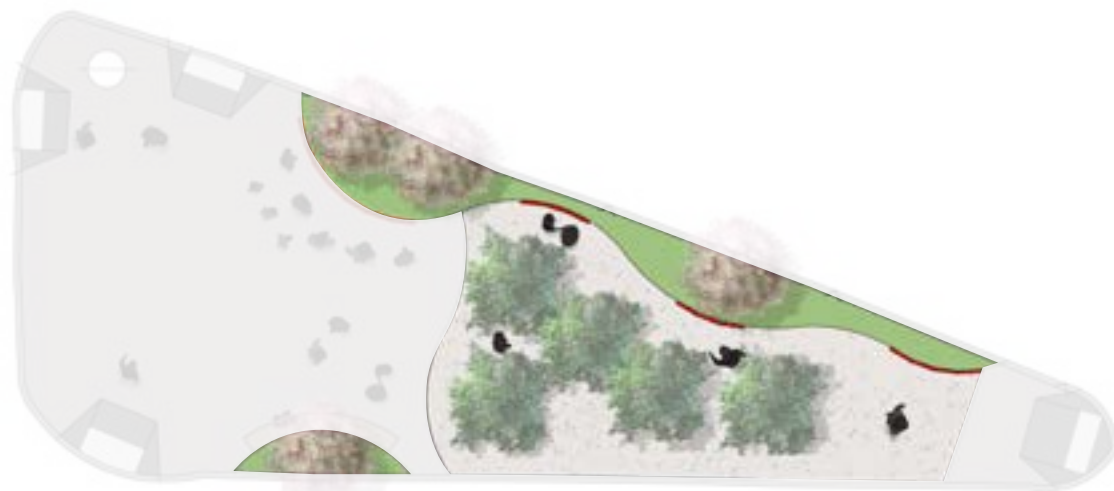
Information Exchange



Gathering Areas

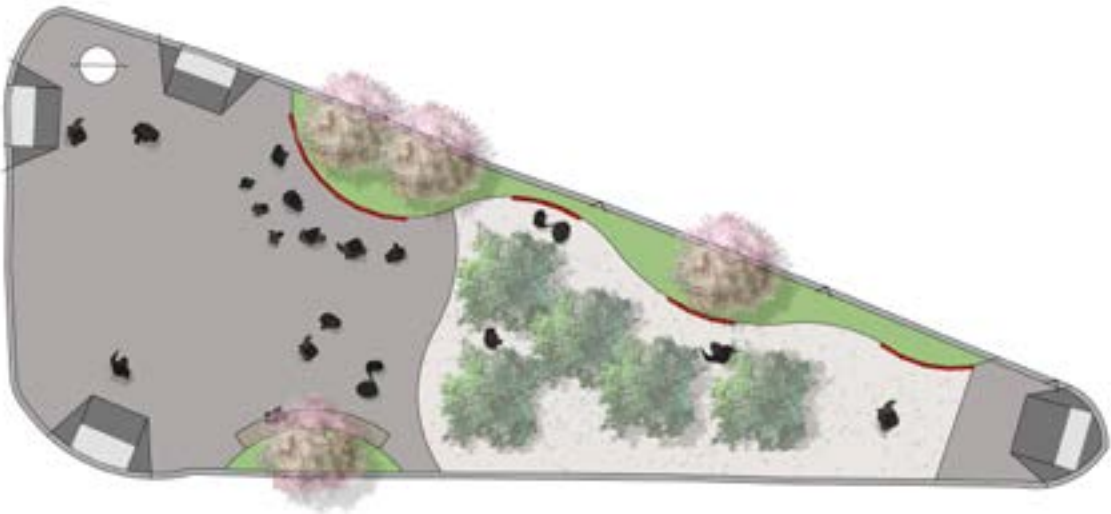


Planting/Permeable Surfaces



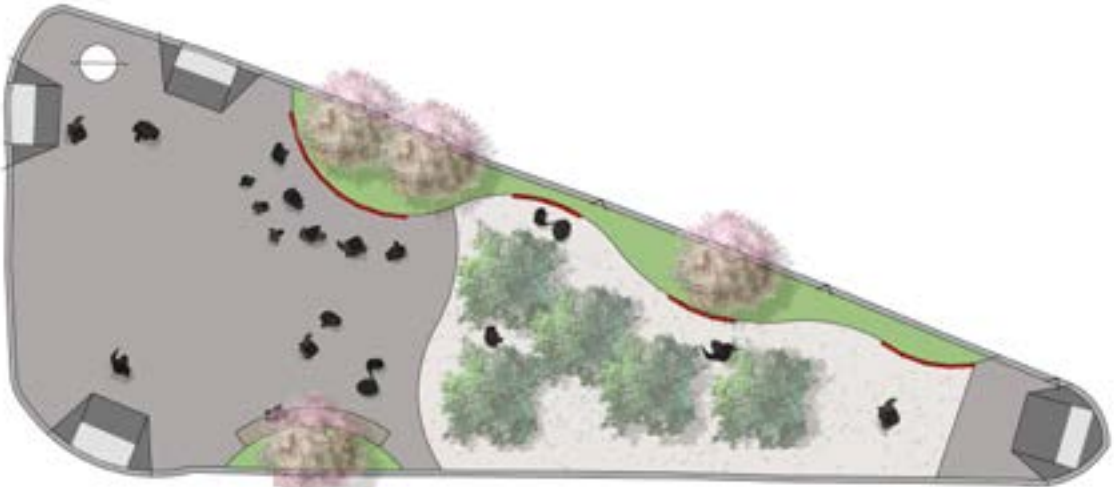
CANAL STREET TRIANGLE

CONCEPT DESIGN: BOSQUE



CANAL STREET TRIANGLE

CONCEPT DESIGN: BOSQUE





POLL QUESTION



WHAT ASPECT OF THE BOSQUE DESIGN DO YOU LIKE THE BEST?

您最喜歡綠化設計的哪個方面？

A. Planted areas

A. 綠化種植面積

B. Bosque of trees

B. 樹叢

C. Seating

C. 座位

D. Storyboard panels

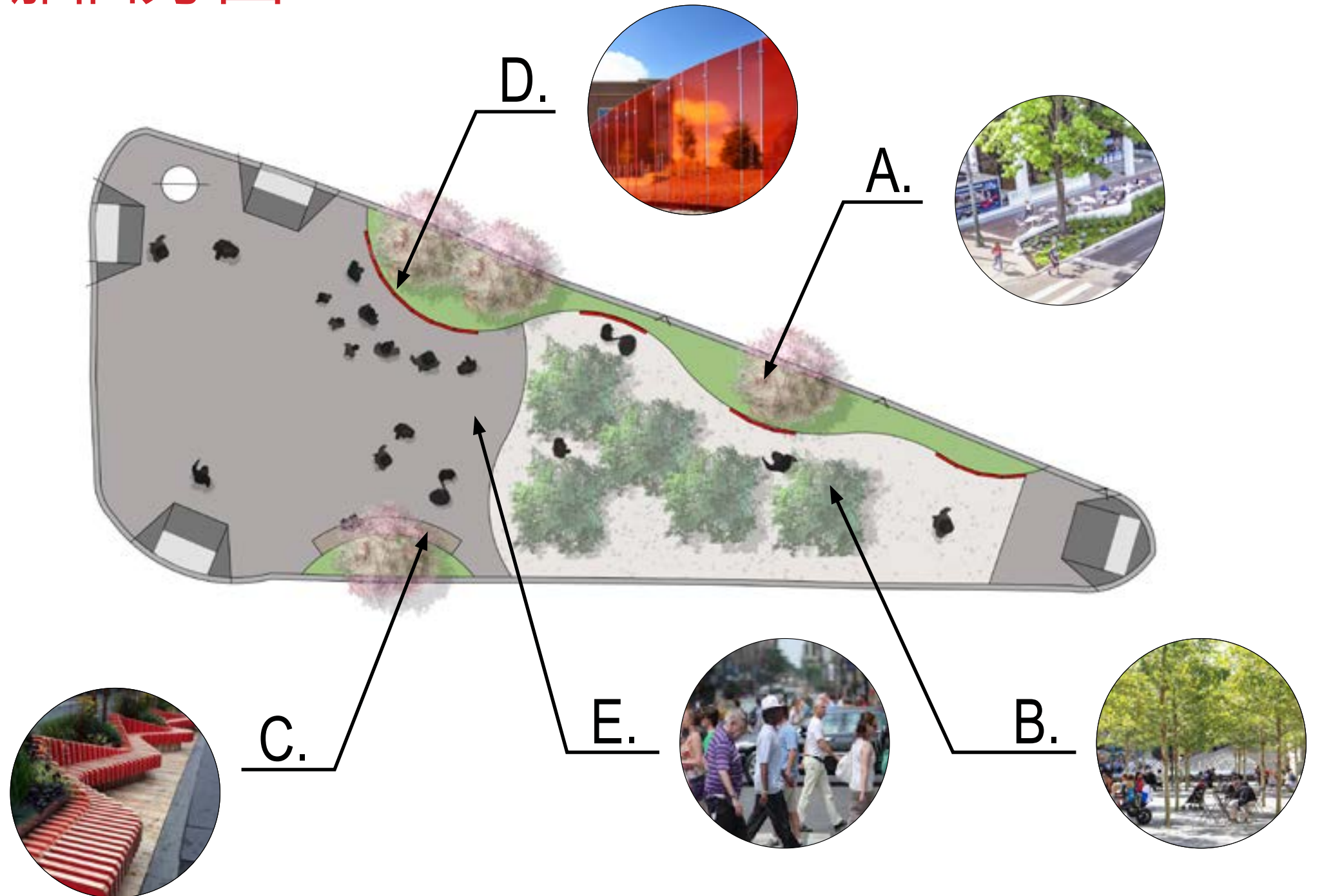
D. 故事板

E. Improved circulation

E. 改善流通

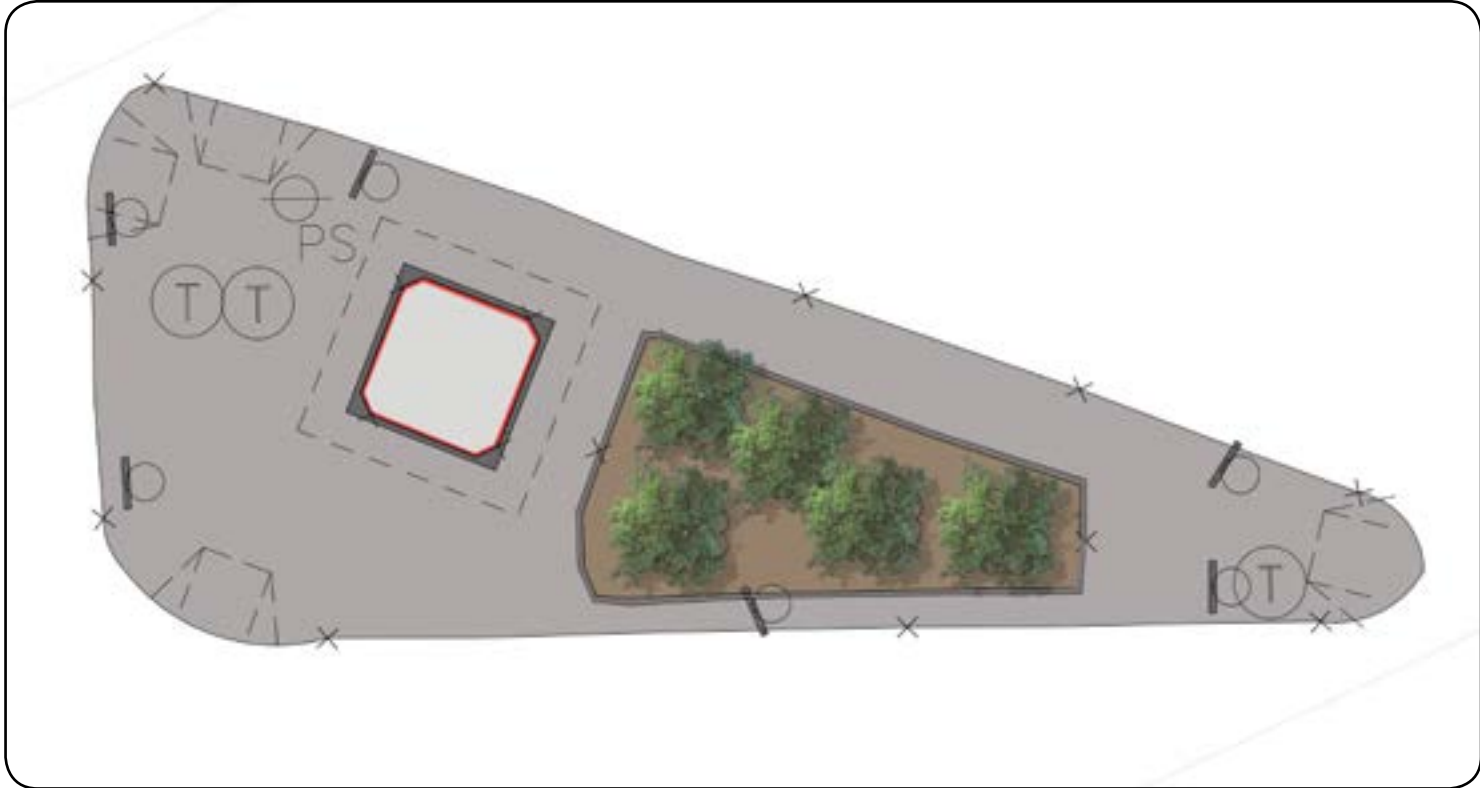
F. None of the above

F. 以上都不喜歡

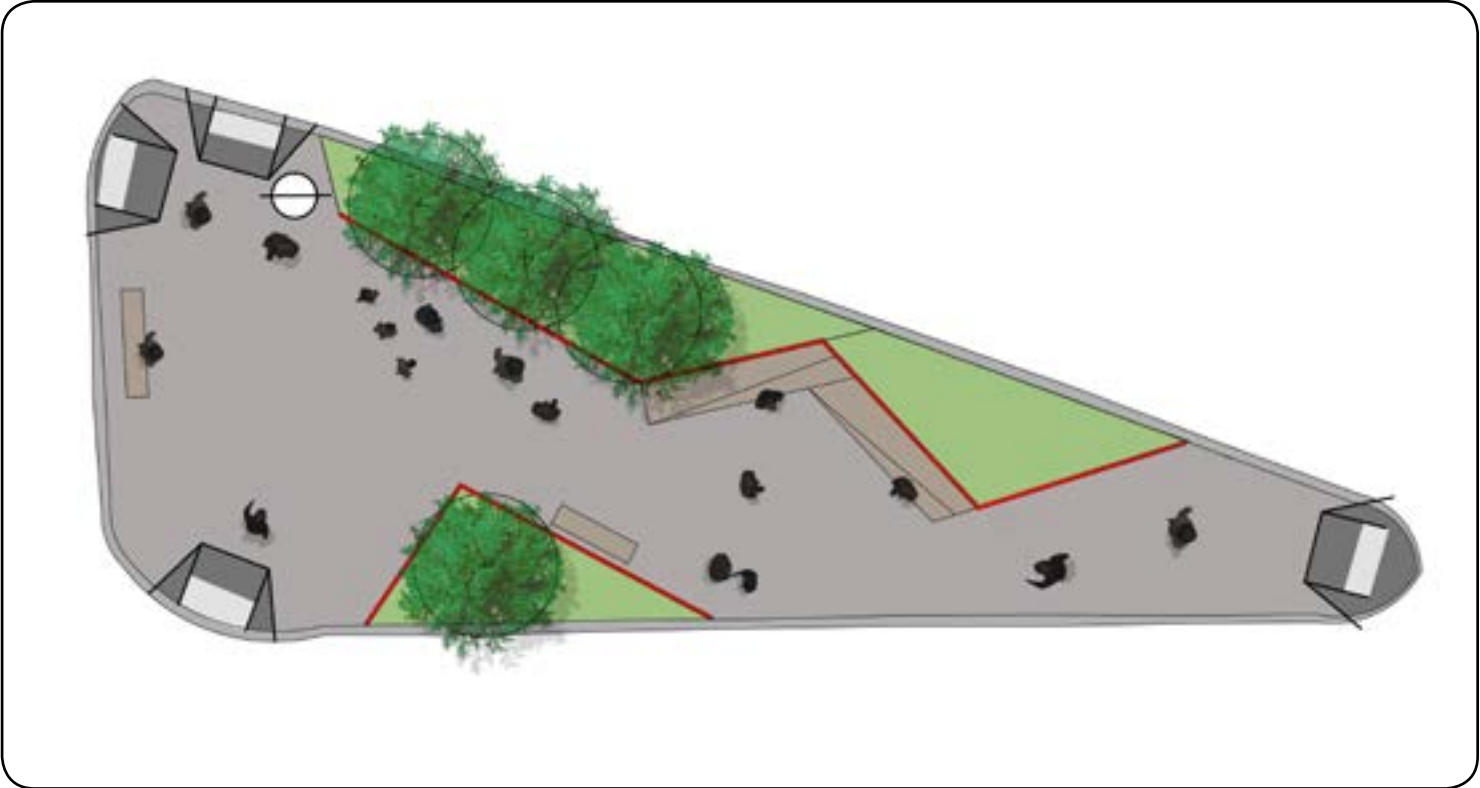


CANAL STREET TRIANGLE

CONCEPT DESIGN: PROCESSION



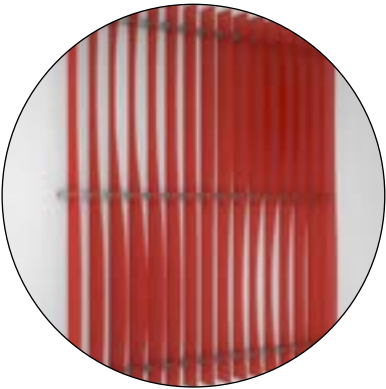
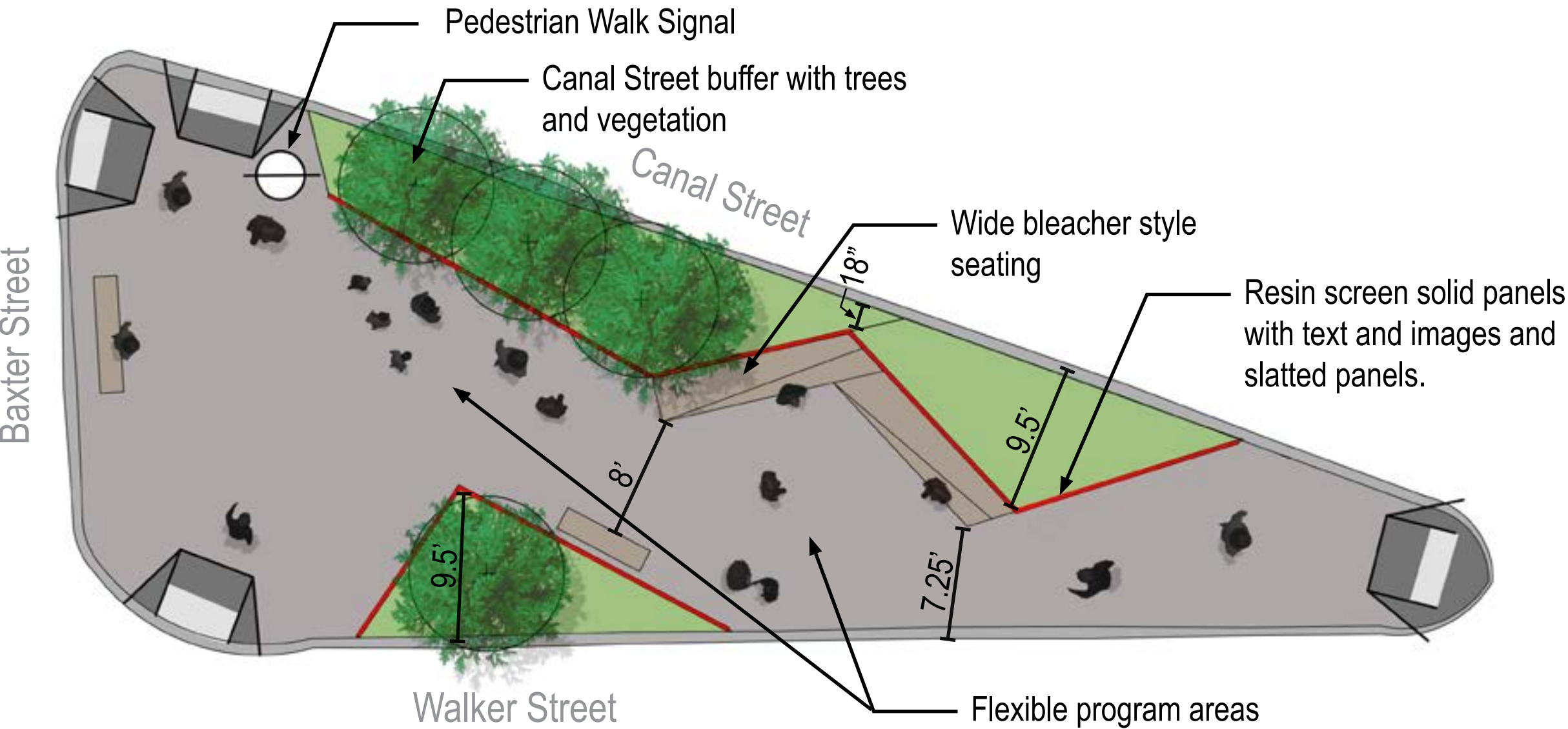
Existing Conditions



Concept: Procession

CANAL STREET TRIANGLE

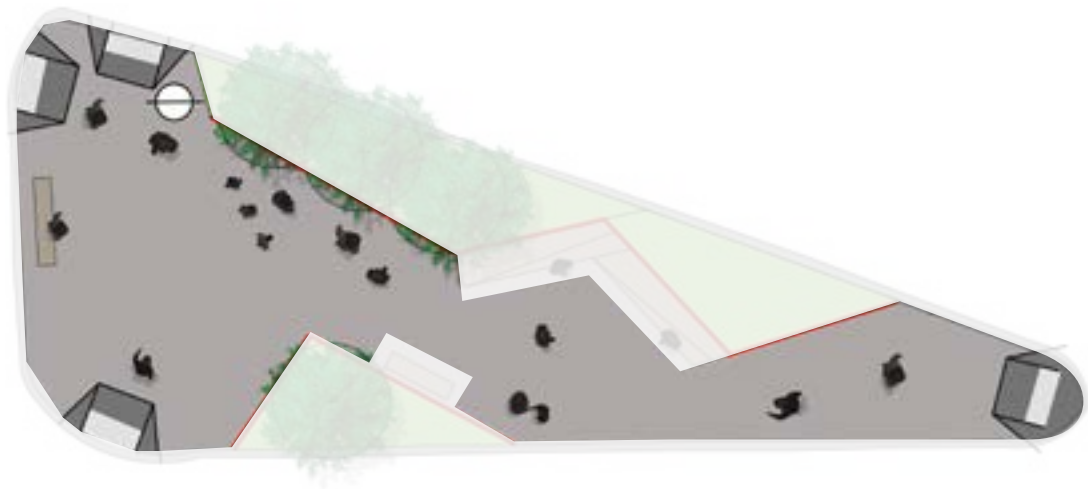
CONCEPT DESIGN: PROCESSION



CANAL STREET TRIANGLE

CONCEPT DESIGN: PROCESSION

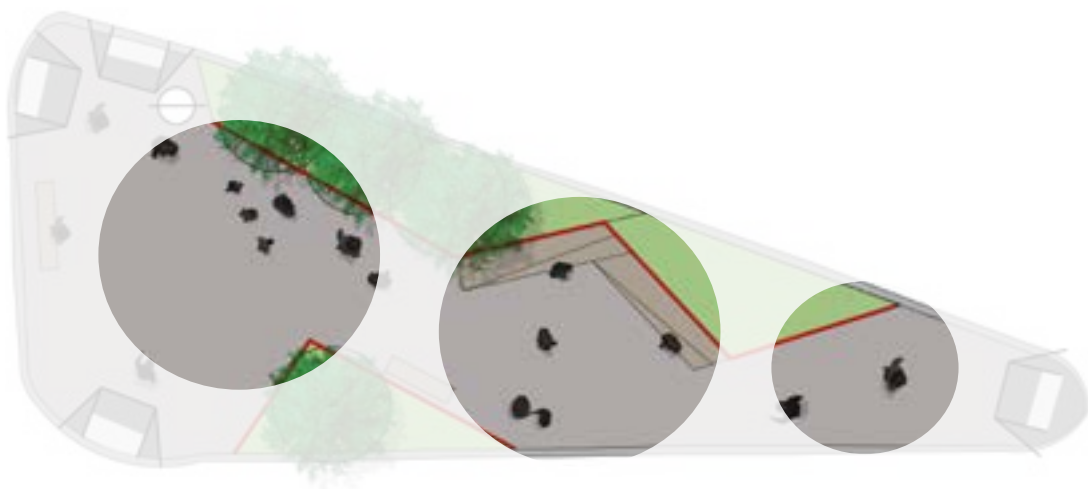
Circulation



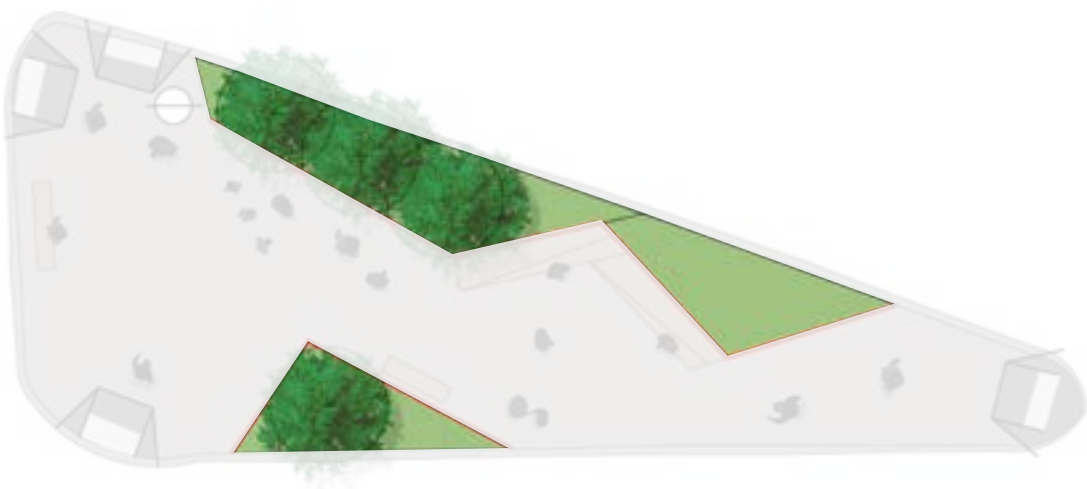
Information Exchange



Gathering Areas

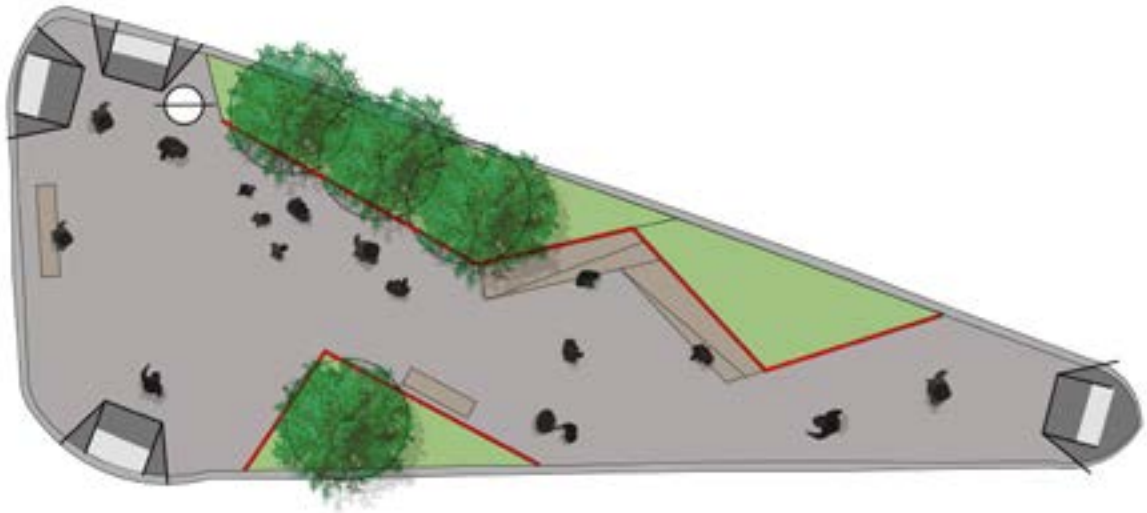


Planting/Permeable Surfaces



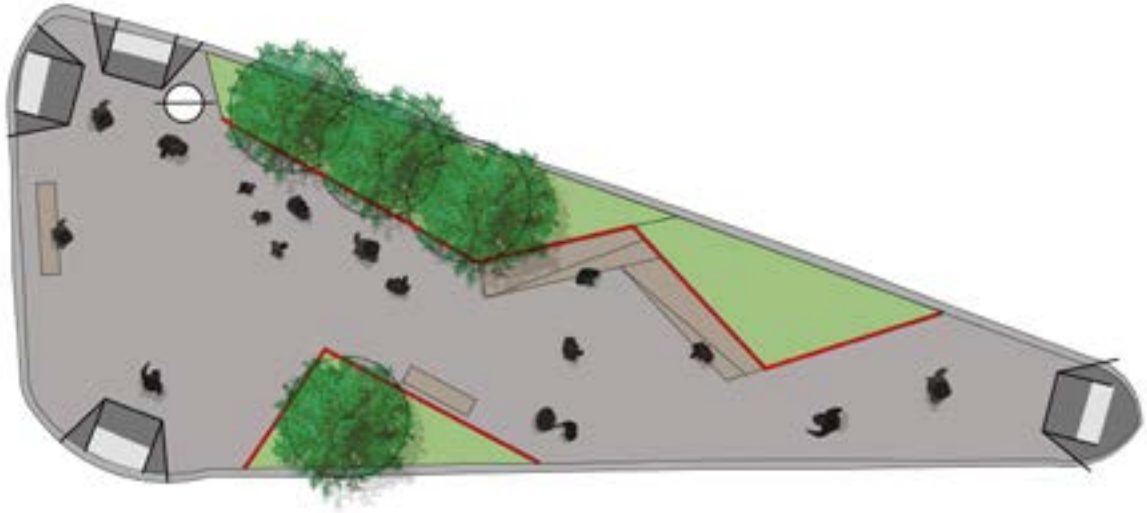
CANAL STREET TRIANGLE

CONCEPT DESIGN: PROCESSION



CANAL STREET TRIANGLE

CONCEPT DESIGN: PROCESSION





POLL QUESTION



WHAT ASPECT OF THE PROCESSION DESIGN DO YOU LIKE THE BEST?

你最喜歡有序通行方案的哪一方面？

A. Planted areas

A. 種植面積

B. Improved circulation

B. 改善流通

C. Seating

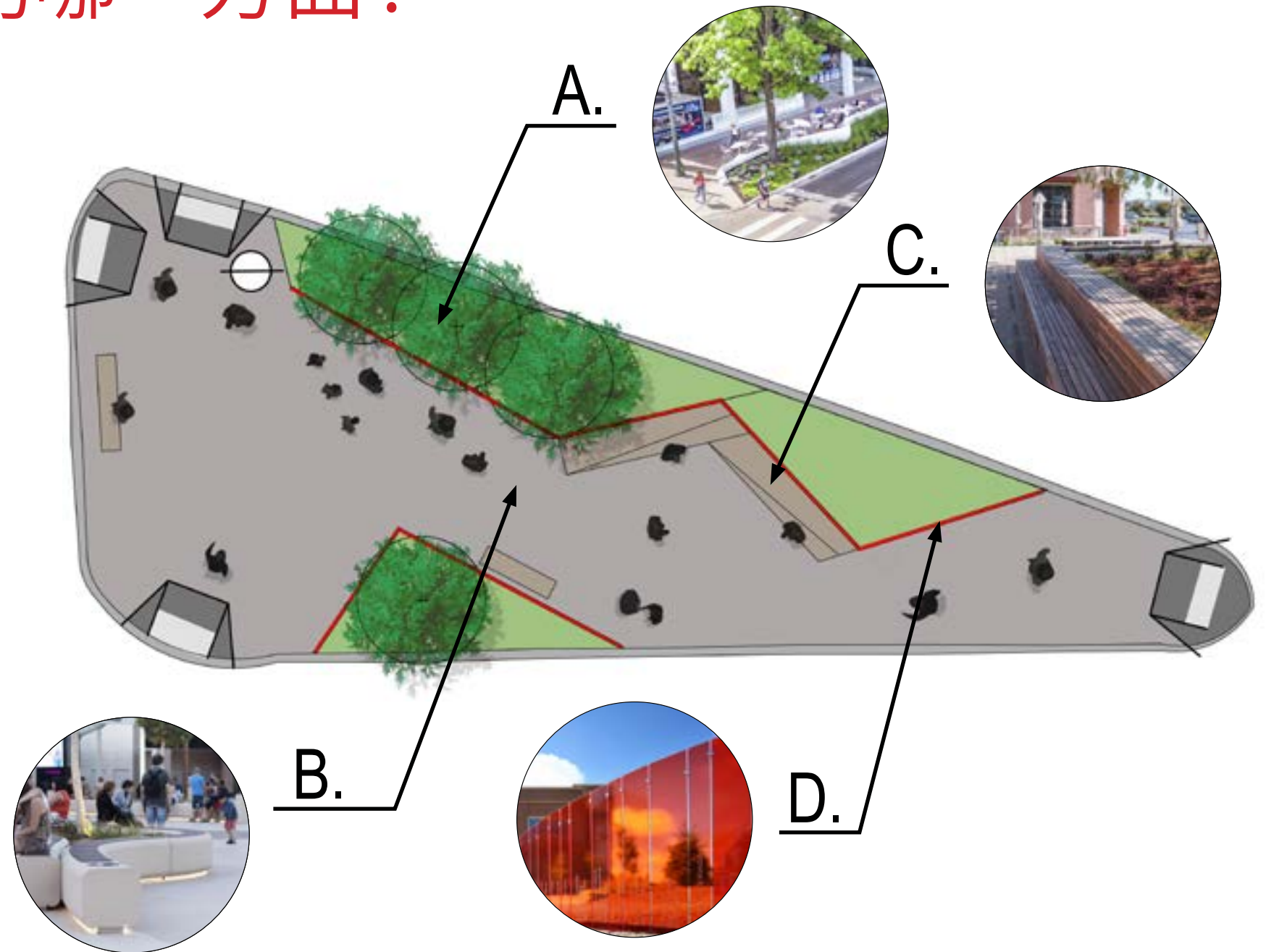
C. 座位

D. Storyboard panels

D. 故事板

E. None of the above

E. 以上都不喜歡



CONCEPT DESIGN: STORYBOARD: MATERIALITY



Connected Resin Panels



Individual Resin Panels



Low-mounted Aluminum Signage Panels



Digital Signage Panels

CONCEPT DESIGN: STORYBOARD: CONTENT



Credit: Think! Chinatown





POLL QUESTION



WHAT TYPE OF INFORMATION OR VISUAL CONTENT WOULD YOU LIKE TO SEE ON THE STORYBOARD?

你希望在故事板展示什麼資訊或視覺內容？

A. Maps & wayfinding
A. 地圖和尋路指引



D. Rotating exhibitions
D. 輪流展示內容



B. Historic/Cultural
content
B. 歷史/文化內容



E. No content
E. 沒有內容



C. Art
C. 藝術



CANAL STREET TRIANGLE

CONCEPT DESIGN: NEW KIOSK





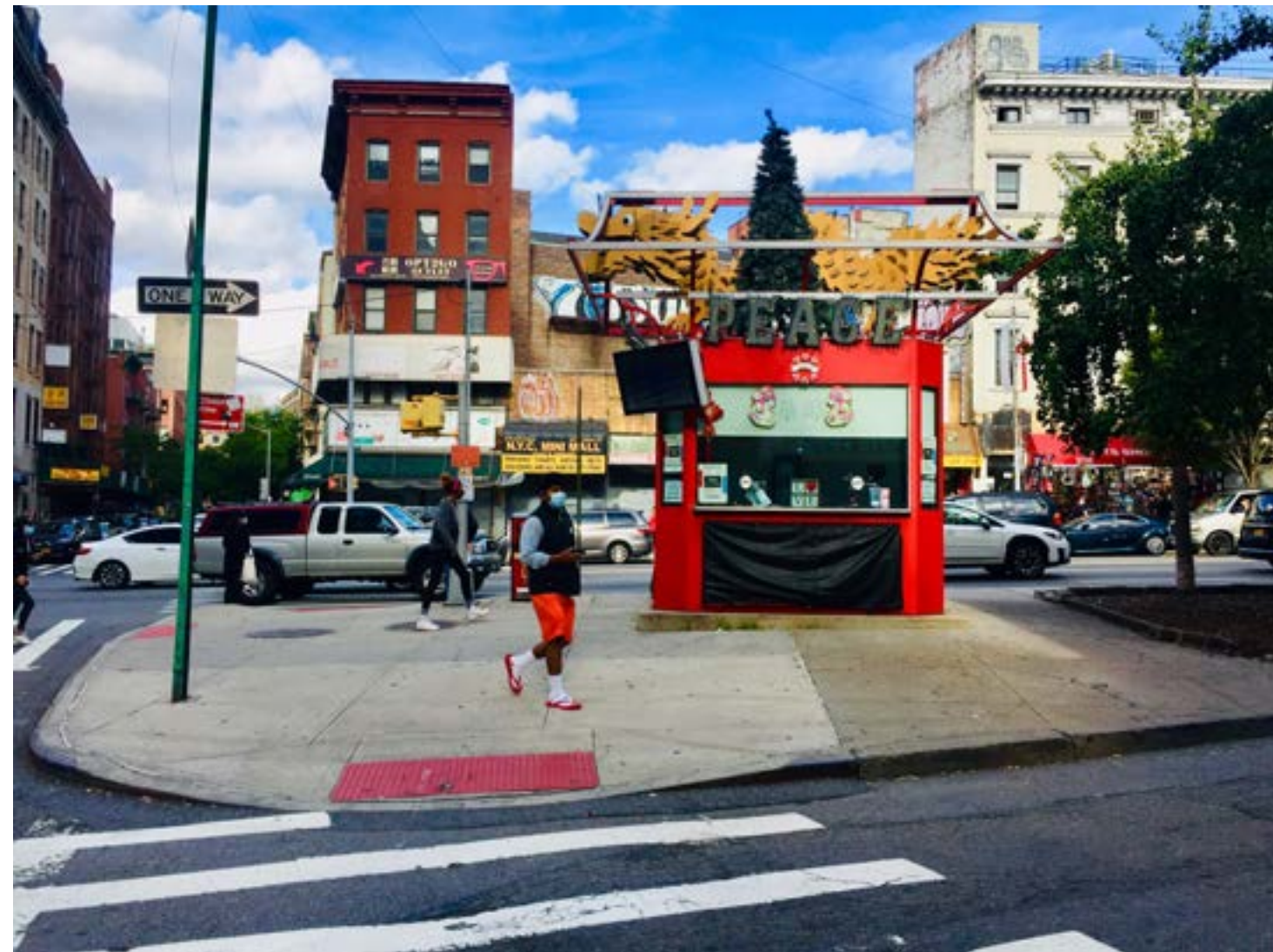
POLL QUESTION



IS THE EXISTING INFORMATION KIOSK EFFECTIVE IN ATTRACTING RESIDENTS AND VISITORS TO THE SITE?

你認為現有的資訊小亭是否有效地吸引居民或遊客來訪？

- A. Yes
- A. 有效
- B. No
- B. 無效



IF AN INFORMATION KIOSK WERE TO BE PART OF THE NEW DESIGN, WHAT WOULD BE YOUR PREFERENCE?

如果在新方案設計包括一個資訊小亭在內, 你希望見到什麼樣子的小亭?

- A. Retain the existing kiosk
- A. 保留現有的小亭
- B. Install a new, smaller kiosk with staff
- B. 安裝一個新的, 更小的, 和有員工站崗的小亭
- C. Provide an unstaffed kiosk
- C. 提供一個沒有員工站崗的小亭
- D. The site doesn't need a kiosk
- D. 該位置不需要一個小亭



CANAL STREET TRIANGLE

SUMMARY

Circulation

Facilitate and optimize east-west pedestrian flow through the site to afford better circulation and movement and to create a sense of gateway procession.

Planted Buffer

Provide a buffer along Canal Street integrating trees, vegetation, seating and structures to safeguard users from the traffic and noise along Canal Street.

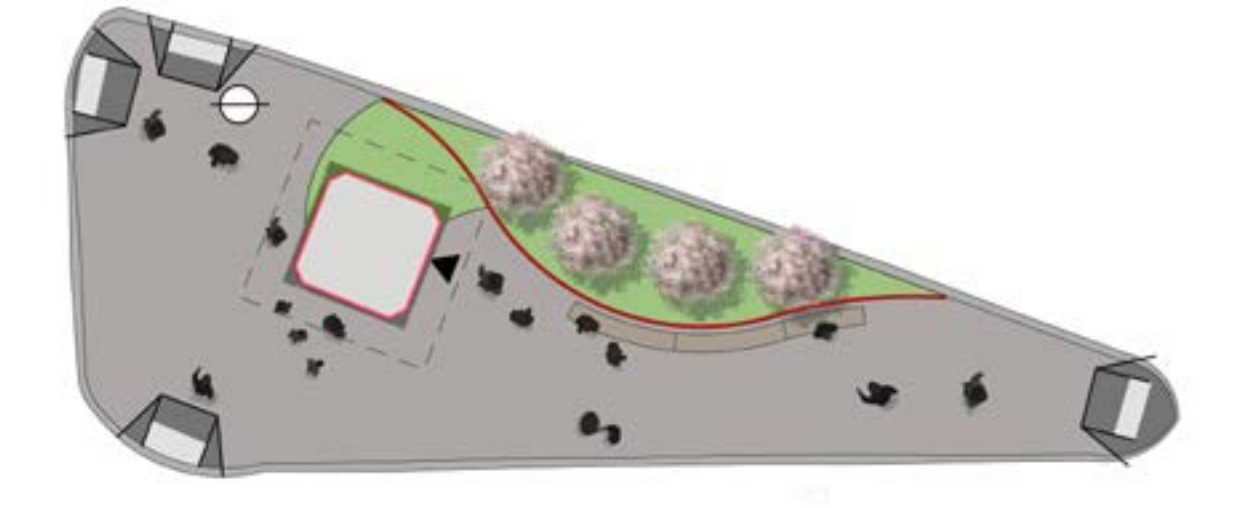
Flexible/Programmable Areas

Inscribe gathering spaces that afford space for community demonstrations and programming.

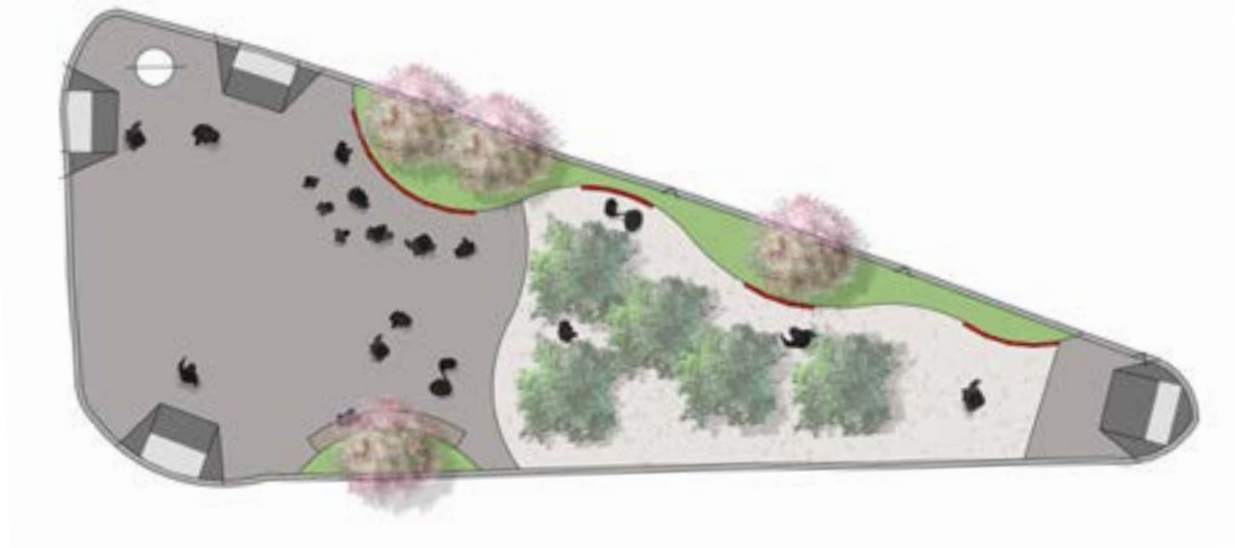
Cultural Identity/Space of Exchange

Establish a framework to storyboard the complex cultural history of the neighborhood, focusing on the pride and contributions of American-Chinese who have forged Manhattan’s Chinatown.

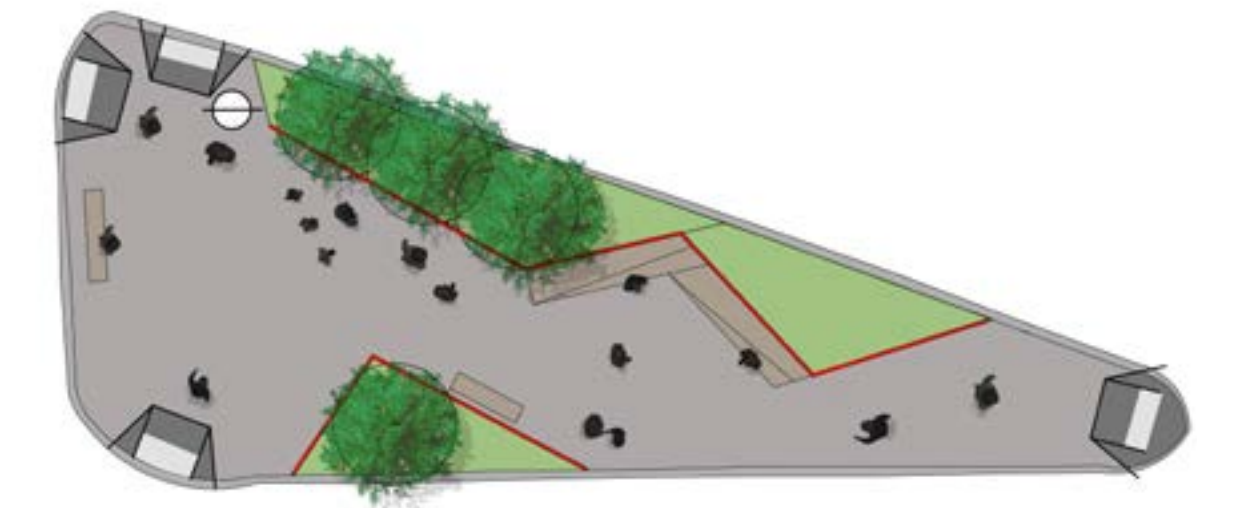
KIOSK



BOSQUE



PROCESSION





POLL QUESTION



HOW WOULD YOU USE THE NEW TRIANGLE?

您將如何使用新三角地區？

A. A meeting or gathering place

A. 會議或聚會地點

B. To walk through

B. 走路經過

C. To sit and relax

C. 坐下和休息

D. All of the above

D. 以上所有

E. None of the above

E. 以上都不適用



KIOSK



BOSQUE



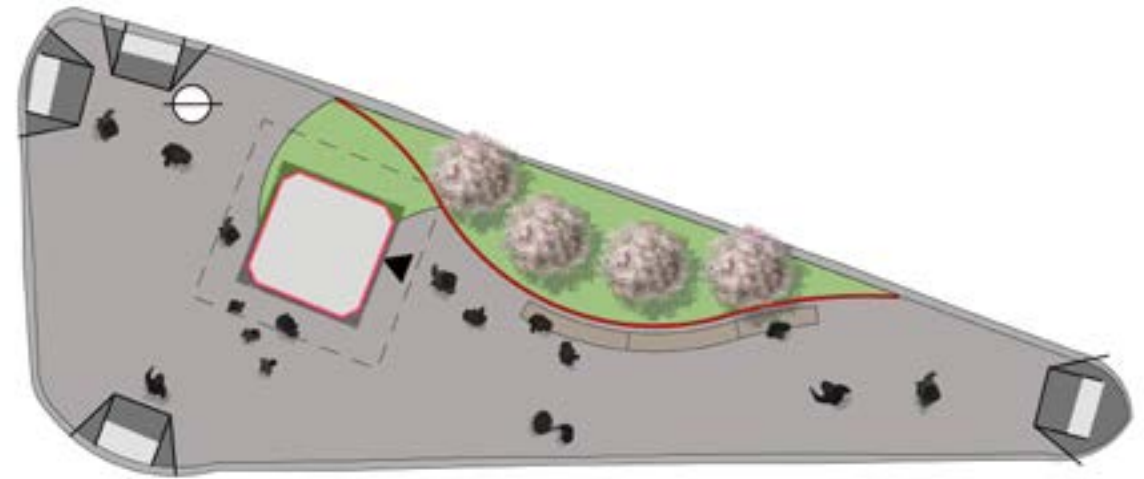
PROCESSION

WHICH OPTION DO YOU LIKE THE BEST OVERALL?

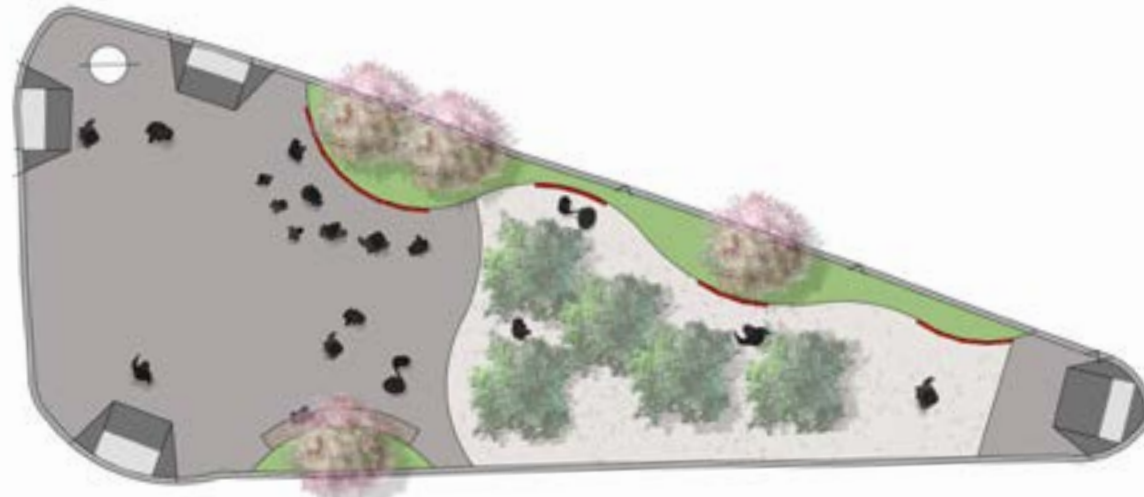
您最喜歡哪種方案？

- A. Kiosk
- A. 小亭
- B. Bosque
- B. 綠化設計
- C. Procession
- C. 有序通行設計

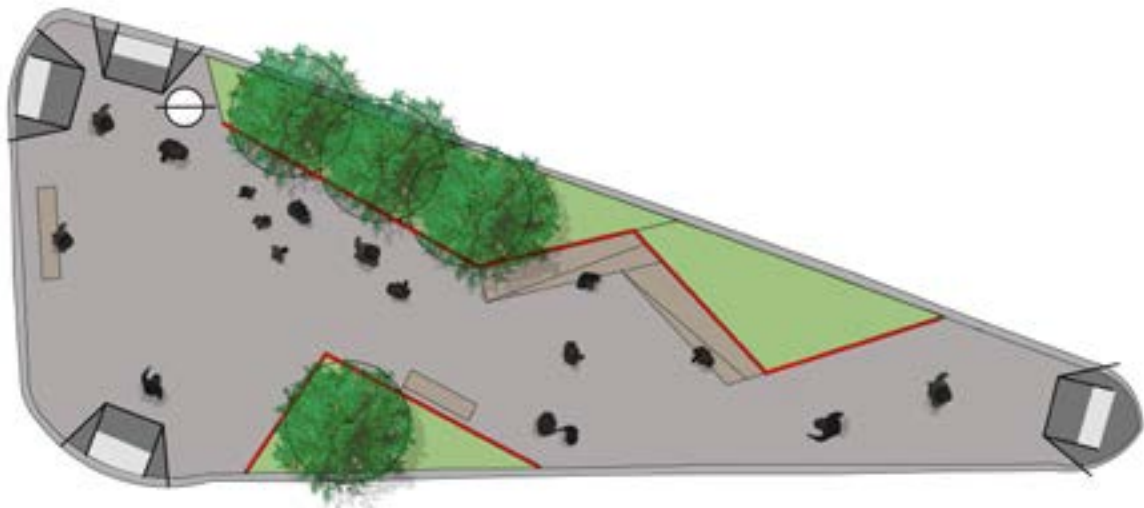
KIOSK



BOSQUE



PROCESSION





Questions?

Please contact: Jennifer Leung, jleung@dot.nyc.gov

唐人街
GATE
WAYS
TO
CHINA
TOWN
之道