

Grand Army Plaza

Enhancements

Summer
2011

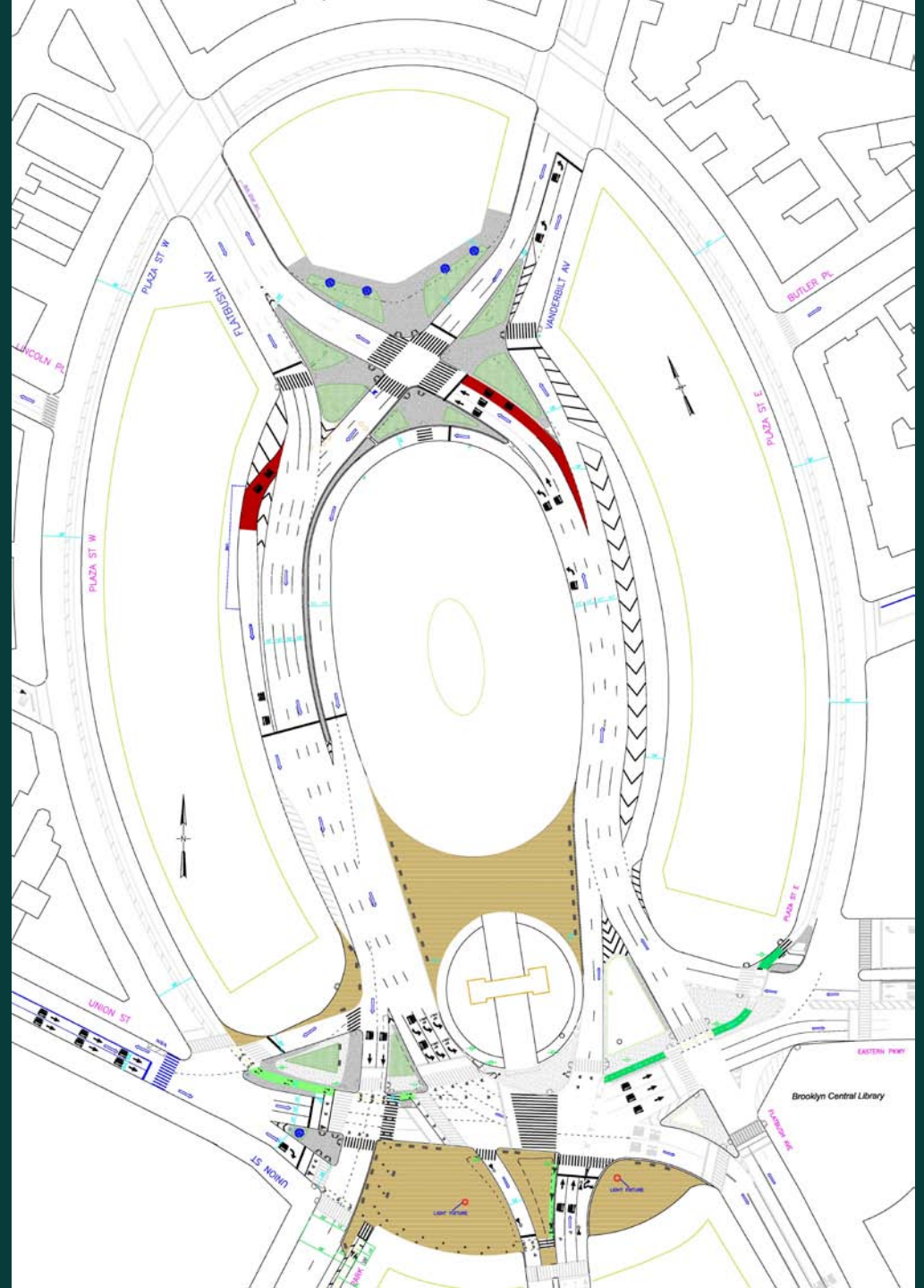
GAP Full Plan

Shorter pedestrian crossings

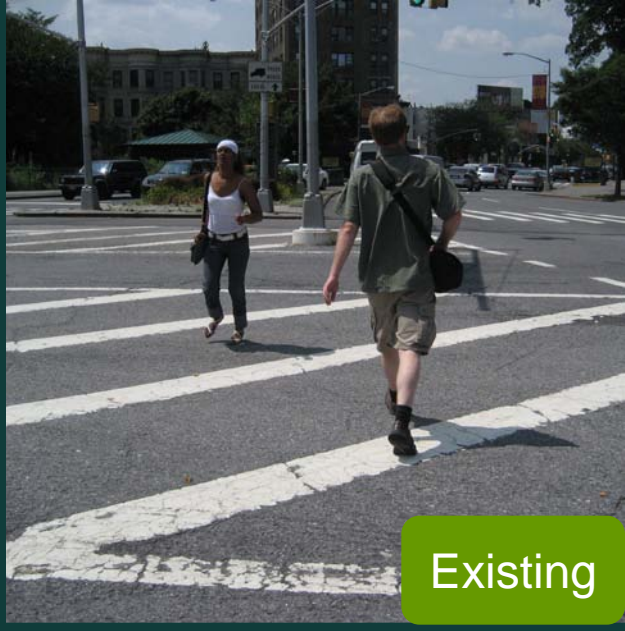
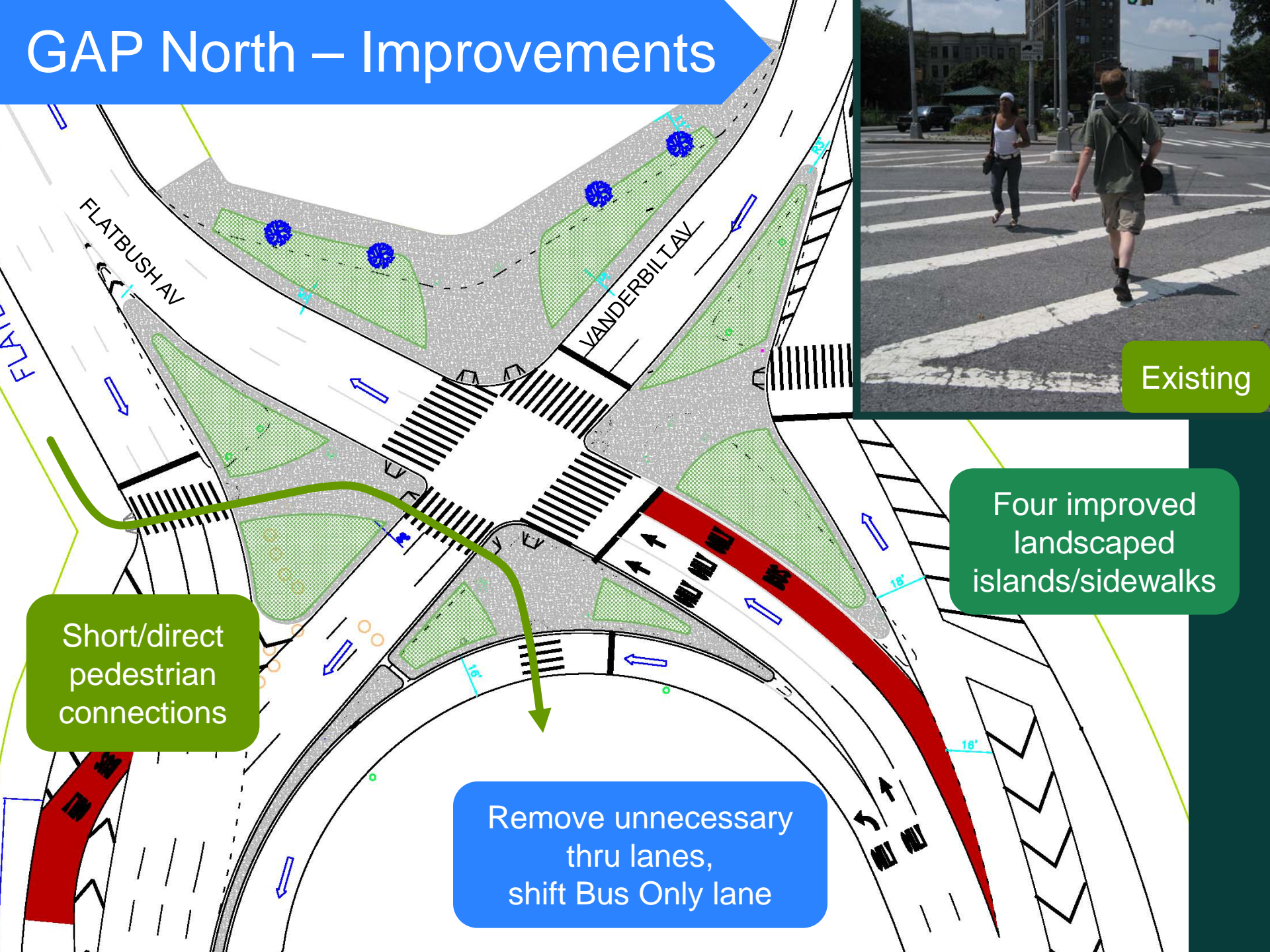
Separated vehicle movement

Enhanced plaza space

Bicycle connections



GAP North – Improvements



Existing

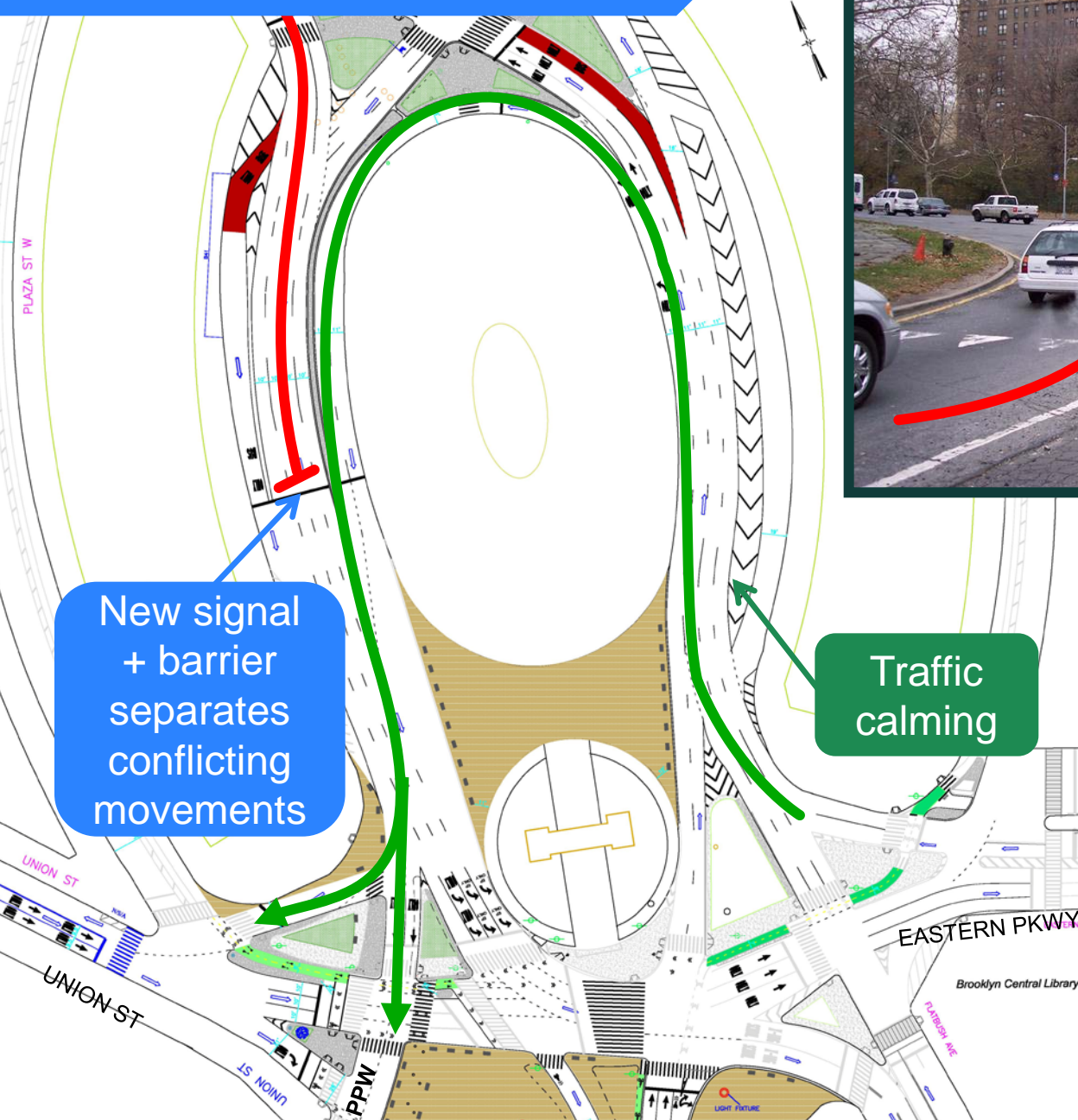
Short/direct pedestrian connections

Remove unnecessary thru lanes, shift Bus Only lane

Four improved landscaped islands/sidewalks

Ring Improvements

Existing



New signal + barrier separates conflicting movements

Traffic calming



GAP South Improvements

Existing

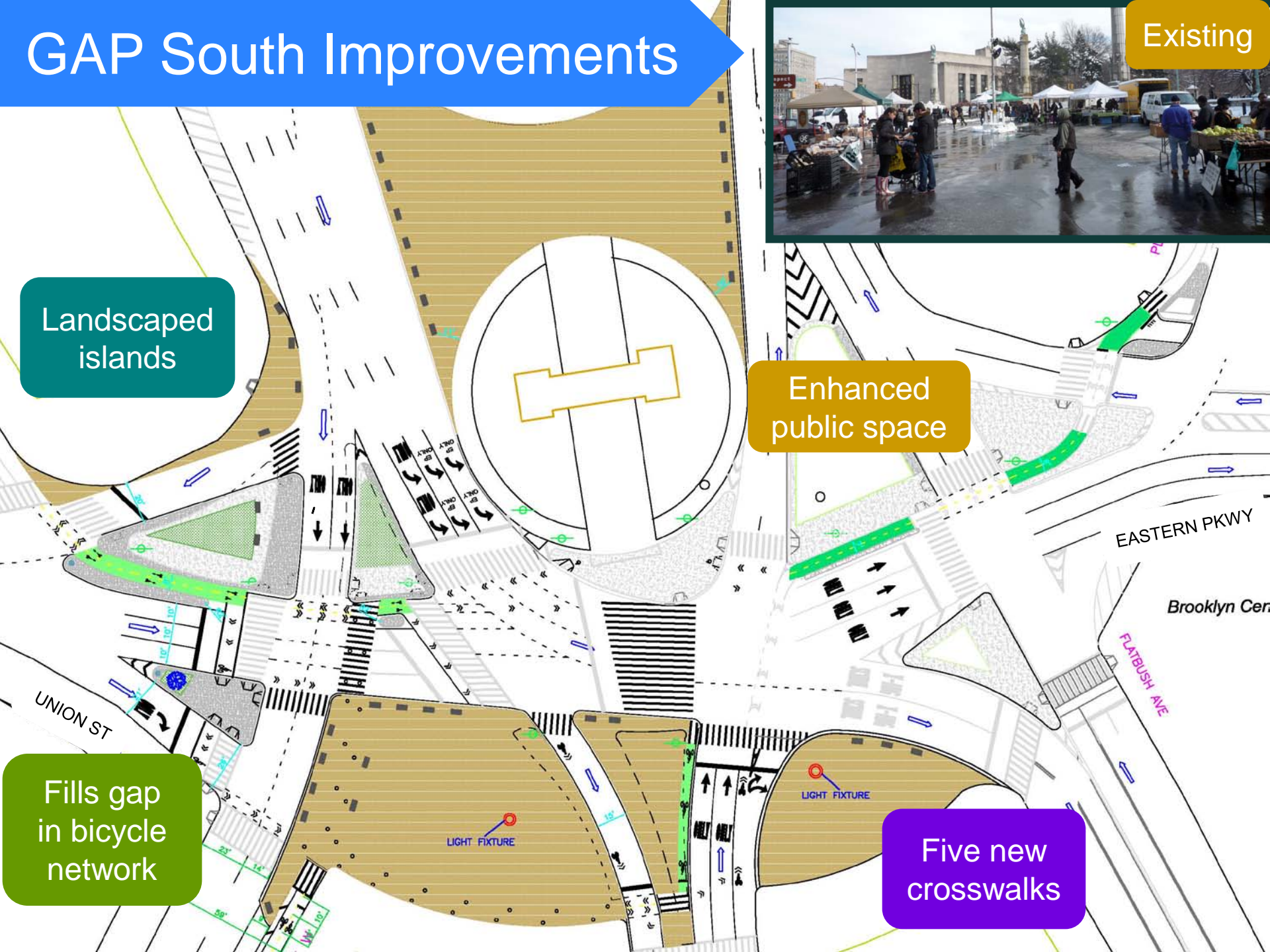


Landscaped islands

Enhanced public space

Fills gap in bicycle network

Five new crosswalks



Implementation Schedule

Major work done between
4th of July and Labor Day
when there is less traffic

JUNE

- Concrete - night work only (9PM-7AM)
- No traffic diversions

JULY

- Concrete night and day work
- One traffic diversion

AUGUST

- Mill & repave – night work only
- Install markings
- Install plaza treatment

June



Concrete Islands

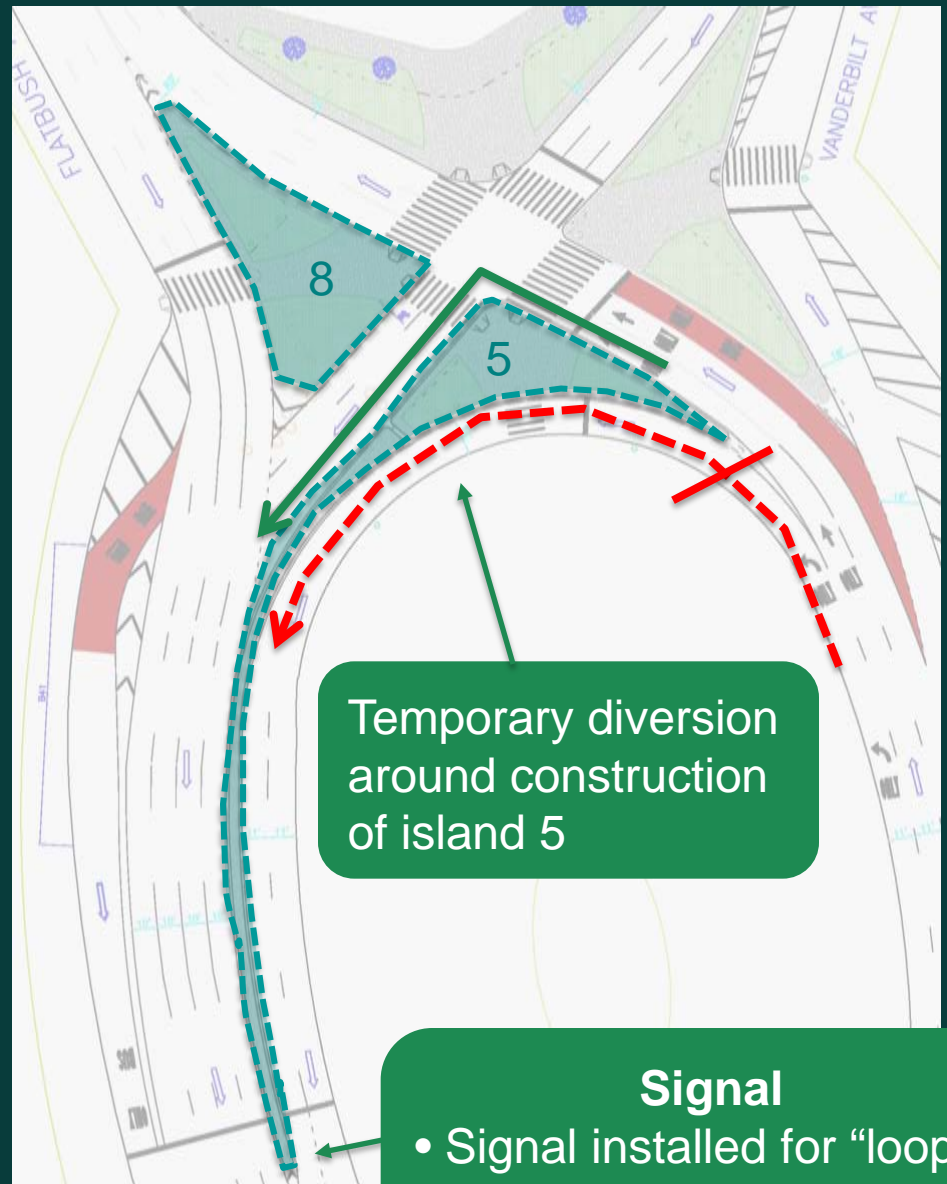
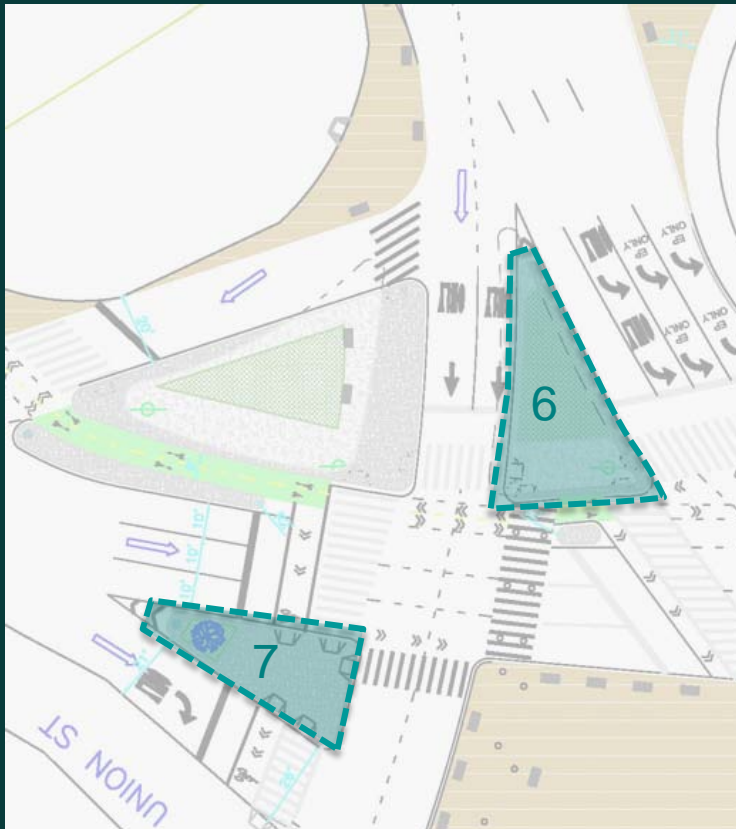
- All night work
- Islands 1 & 2 start simultaneously
- Islands 3 & 4 started as 1 & 2 are completed



July

Concrete Islands

- Day crew added for island 5
- Night crews continue on all islands



Temporary diversion around construction of island 5

Signal

- Signal installed for “loop”
- Becomes operational end of July

August

Repave Roads
Night work only

Install New Markings

Install Plaza Treatment

- Crushed gravel surfacing
- Granite blocks





www.nyc.gov/dot

**Thank
You**