



Forest Avenue Safety Improvements

Harbor Plaza/Lowe's, Harbor Road, and Richmond Avenue

Staten Island CB 1 TC | April 2026



Project Location

Forest Avenue

High need for improvements:

- **Vision Zero Priority Corridors:**
 - Forest Ave & Richmond Ave
- **VZ Priority Intersection:**
 - Forest Ave & Harbor Rd
- **Vision Zero Priority Area**
- **Priority Youth Injury Area**

Graniteville and Mariner's Harbor Neighborhoods

- Light industrial, institutional, and commercial along street; Truck route
- PS 22 The Graniteville School at Richmond Ave/Forest Ave
- Multiple bus routes on corridor and residential neighborhoods nearby

Forest Avenue, Harbor Plz, Harbor Rd, & Richmond Ave



Safety Data

Rates of fatalities and severe injury on Forest Ave. are in the **top 10%** on Staten Island

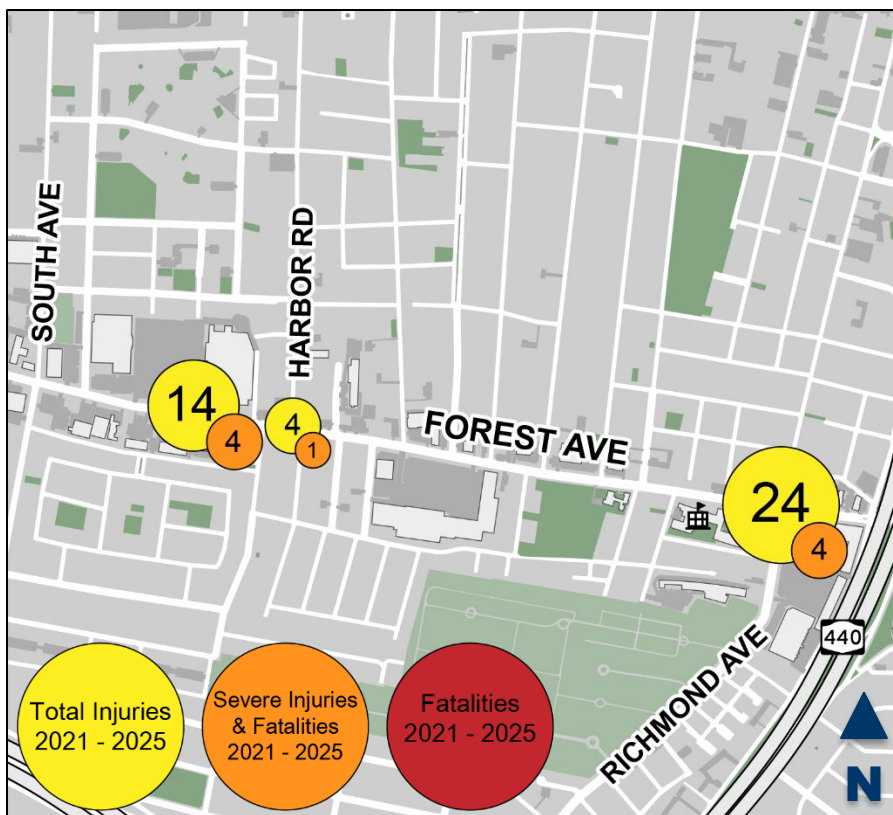
At just these three intersections, from 2021-2025:

- **9 people severely injured** in crashes
 - 6 of 9 were pedestrians
- **42 total injuries**
 - 20 of 42 were pedestrians

Mode	Total Injuries	Severe Injuries	Fatalities	KSI
Pedestrian	20	6	0	6
Bicyclist	1	0	0	0
Motor Vehicle Occupant	19	2	0	2
Motorized Two-Wheelers	2	1	0	1
Total	42	9	0	9

Source: Fatalities: NYCDOT, Injuries: NYPD FORMS database KSI: Persons Killed or Severely Injured

Crashes resulting in injuries, 2021-2025



Existing Conditions

Long crossing distances with no protection for pedestrians

- **Wide street** encourages high vehicle speeds
- **Large intersections** with **fast turns, long crossings,** and **lack of pedestrian refuges** creates dangerous conditions for pedestrians
- High volumes of **vehicles making turns**
- High numbers of **trucks and buses** on corridor



Long crossing distances with no safe place to wait; No protection from turning vehicles

Faded crosswalk markings

Proposed Improvements – Richmond Avenue

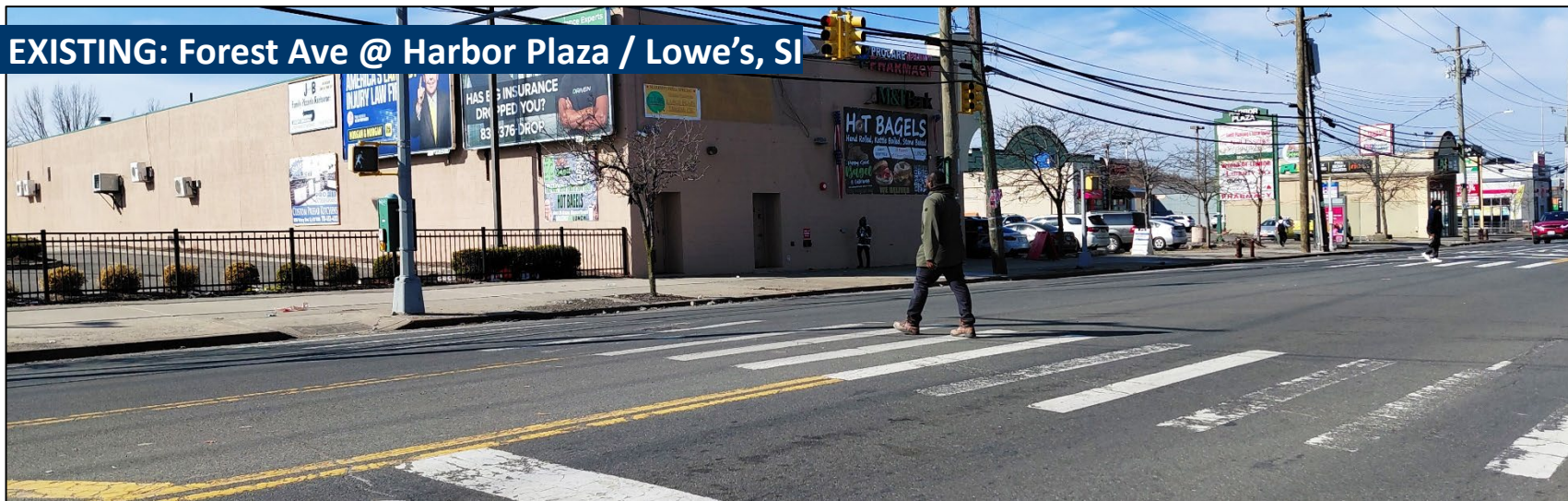
- Shortens pedestrian crossing distances
- Provides a **safe place to wait** while crossing longest leg of intersection
- Encourages **slower, safer vehicle turns**
- Improves **visibility** for all road users



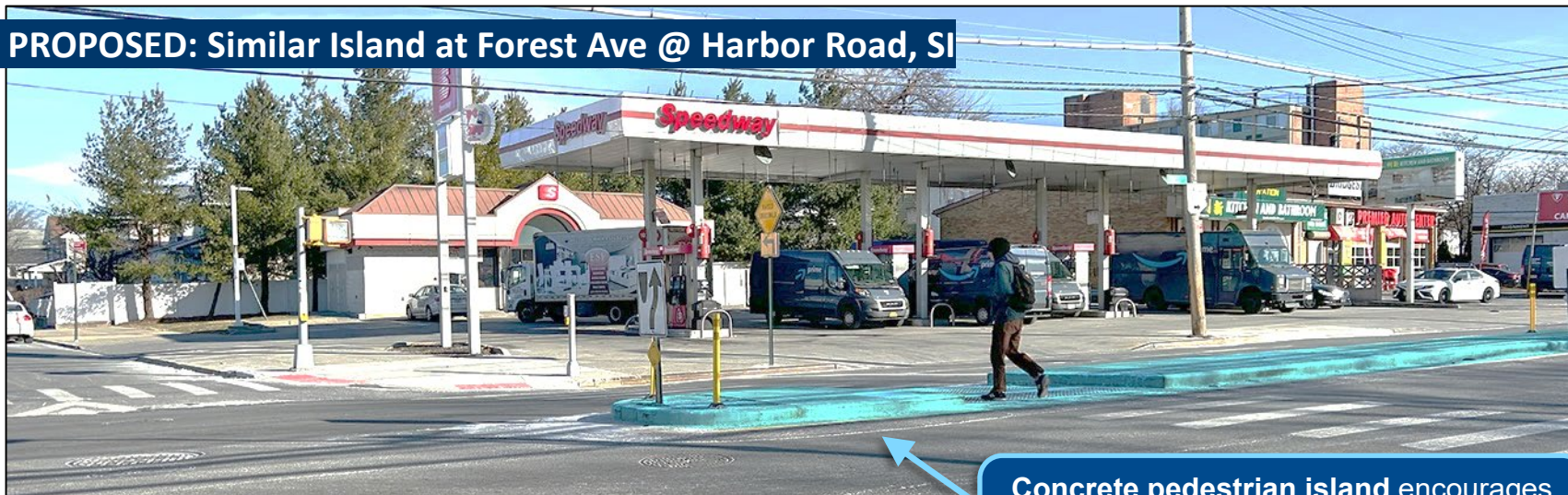
NOTE: Lane markings will be updated to accommodate new median tip and provide clear movement around the new concrete element.

Proposed Improvements – Harbor Plaza / Lowe’s

EXISTING: Forest Ave @ Harbor Plaza / Lowe’s, SI



PROPOSED: Similar Island at Forest Ave @ Harbor Road, SI



Concrete pedestrian island encourages slower, safer turns and gives pedestrians a safe place to rest mid-crossing

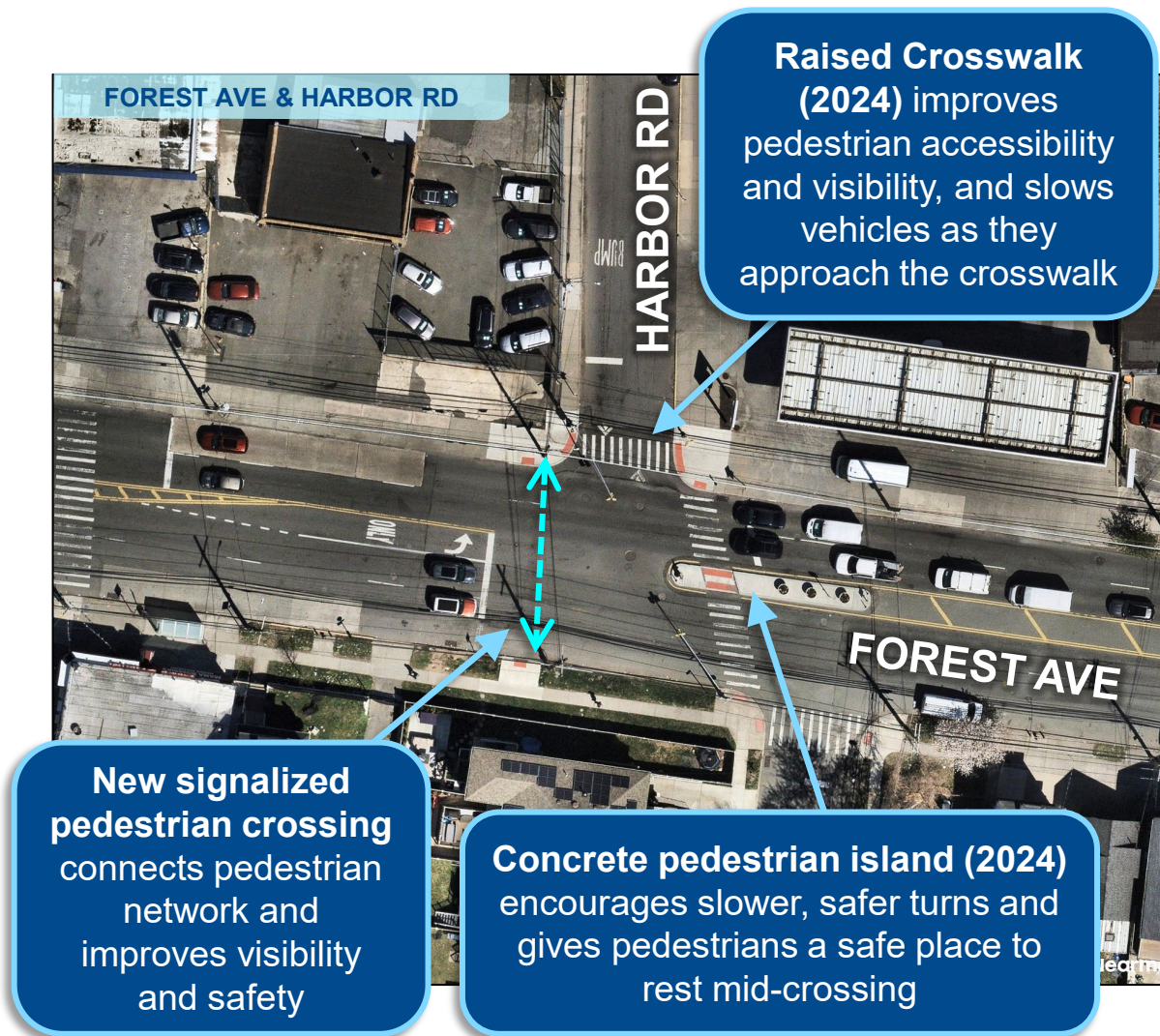
Proposed Improvements – Harbor Road

2024 Project:

- **Raised Crosswalk** slows vehicles approaching crosswalk and improve visibility and mobility accessibility for pedestrians
- **Pedestrian island** shortens pedestrian crossing distances and encourages slower, safer vehicle turns

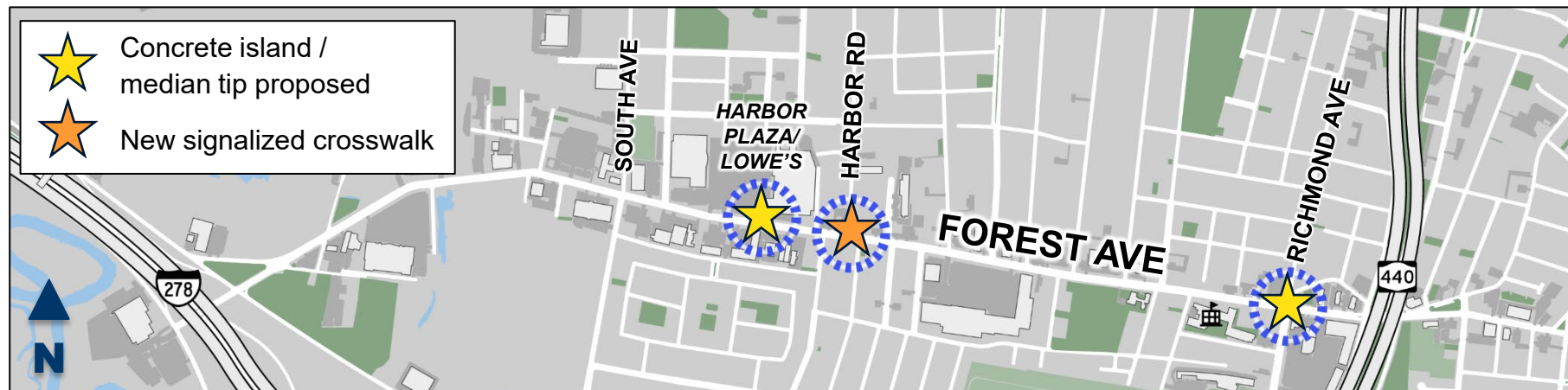
2026 Improvements:

- **New signalized crosswalk** connects pedestrian network and improves visibility and safety



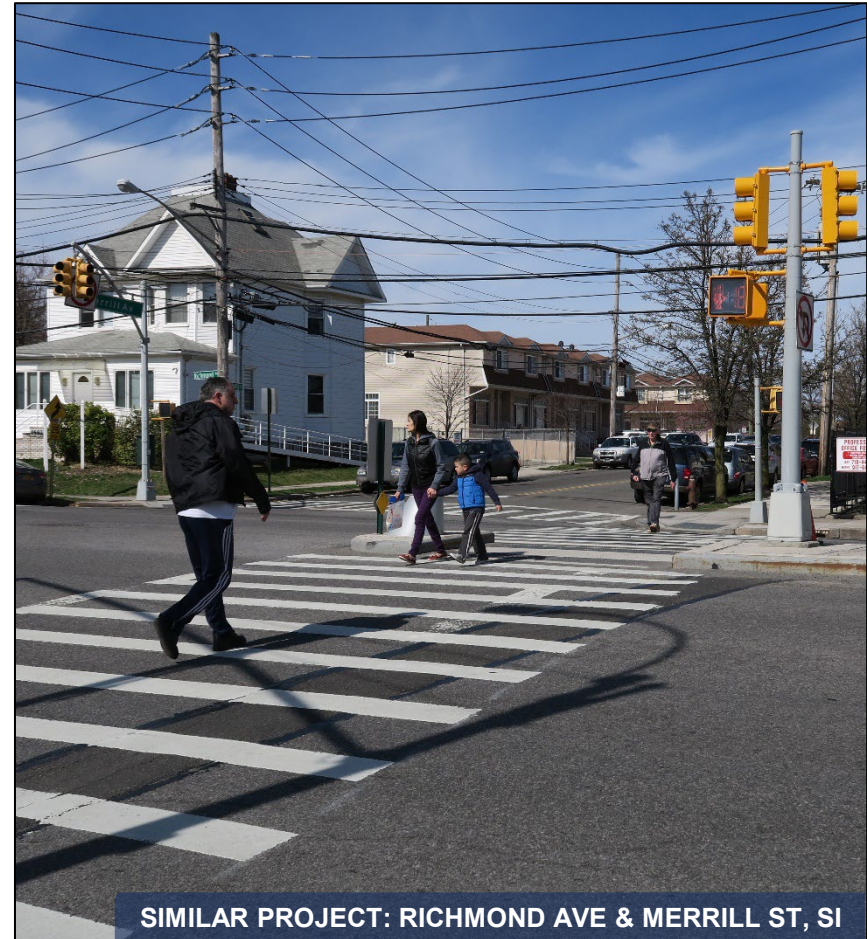
Proposed Improvements & Benefits

- **Concrete Median Tip at Richmond Ave**
 - Provide pedestrian refuge and encourage slower, safer vehicle turns and increase yielding and visibility
- **Concrete Refuge Island at Harbor Plaza**
 - Provide pedestrian refuge and encourage slower, safer vehicle turns and increase yielding and visibility at Harbor Plaza / Lowe's
- **New Signalized Crosswalk at Harbor Rd**
 - Connect the pedestrian network and improve visibility and safety
 - Pedestrian refuge island and Raised Crosswalk installed at location in 2024



Project Benefits

- Provides pedestrian refuge space while crossing wide, busy streets
- Encourages slower, safer vehicle turns
- Improves vehicles yielding to pedestrians
- Increases pedestrian visibility and expands pedestrian network
- Upgrades existing ramps at Harbor Plaza/Lowe's to ADA compliance



Thank You!

Questions?



NYCDOT



nyc_dot



nyc_dot



NYCDOT