

DOWNTOWN FAR ROCKAWAY URBAN DESIGN AND STREETScape RECONSTRUCTION, FAR ROCKAWAY, QUEENS

COMMUNITY BOARD 14:
TRANSPORTATION COMMITTEE MEETING

January 6, 2016





Department of Transportation
Department of Design + Construction
January 6, 2015
W Architecture & Landscape Architecture

Downtown Far Rockaway Urban Design
and Streetscape Reconstruction
Community Board 14: Transportation Committee
Borough of Queens

Project & Far Rockaway Context

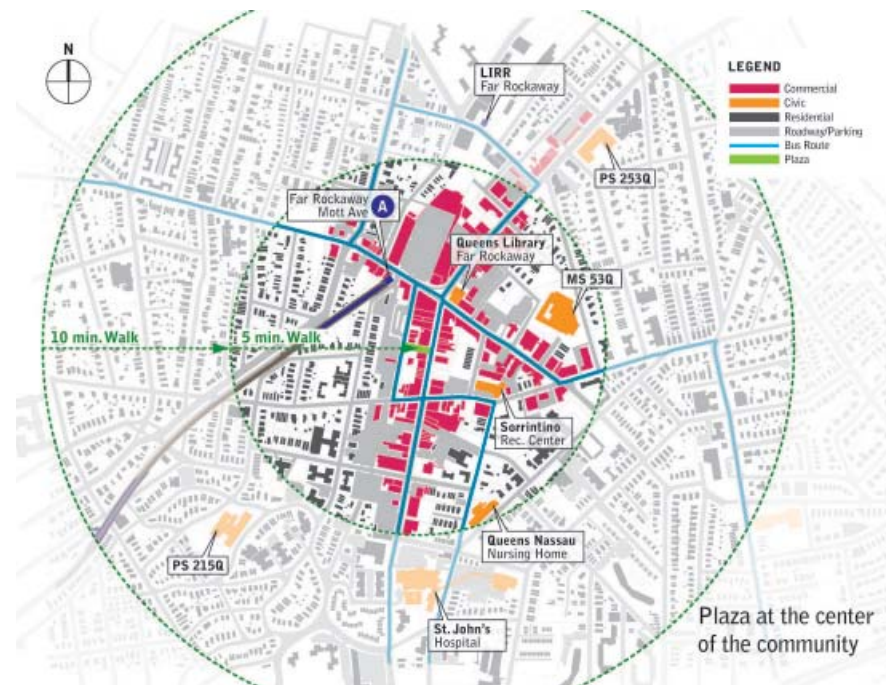
PROJECT LOCATION



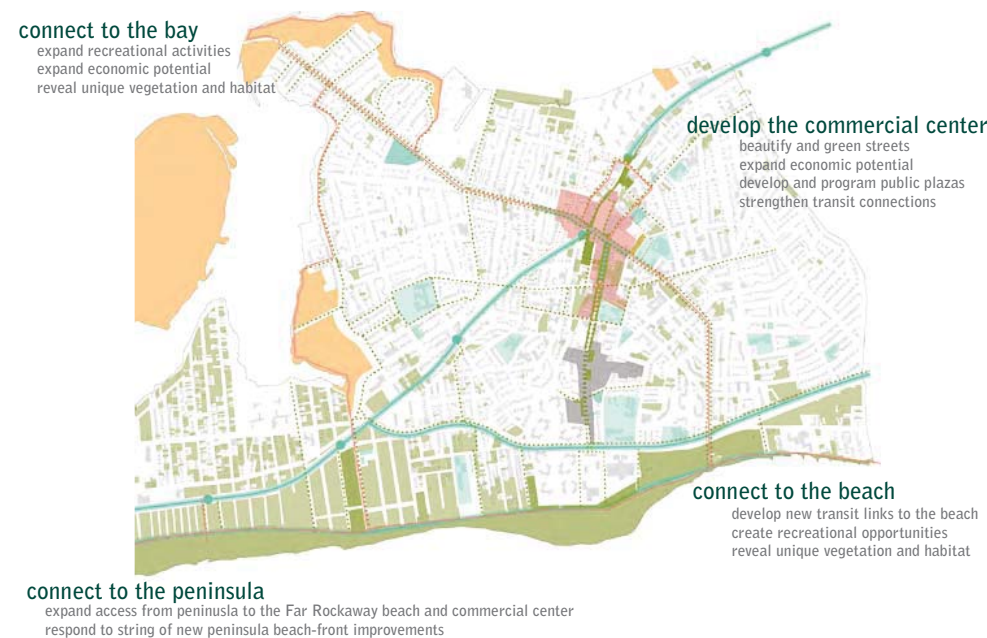
Department of Transportation
 Department of Design + Construction
 January 6, 2015
 W Architecture & Landscape Architecture

Downtown Far Rockaway Urban Design
 and Streetscape Reconstruction
 Community Board 14: Transportation Committee
 Borough of Queens

BEACH 20TH ST PLAZA
 CONSTRUCTION

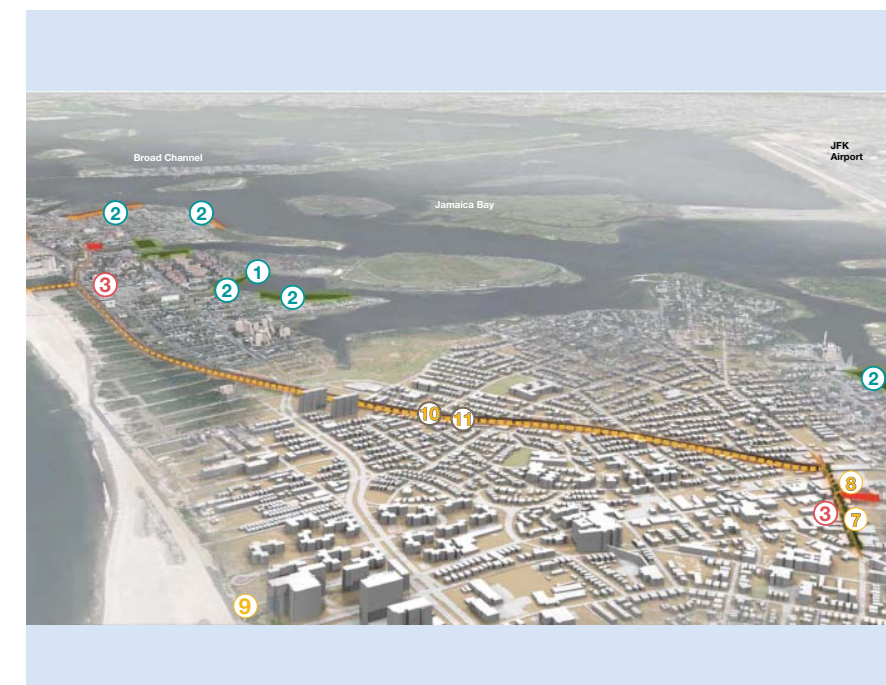


Beach 20th St Plaza

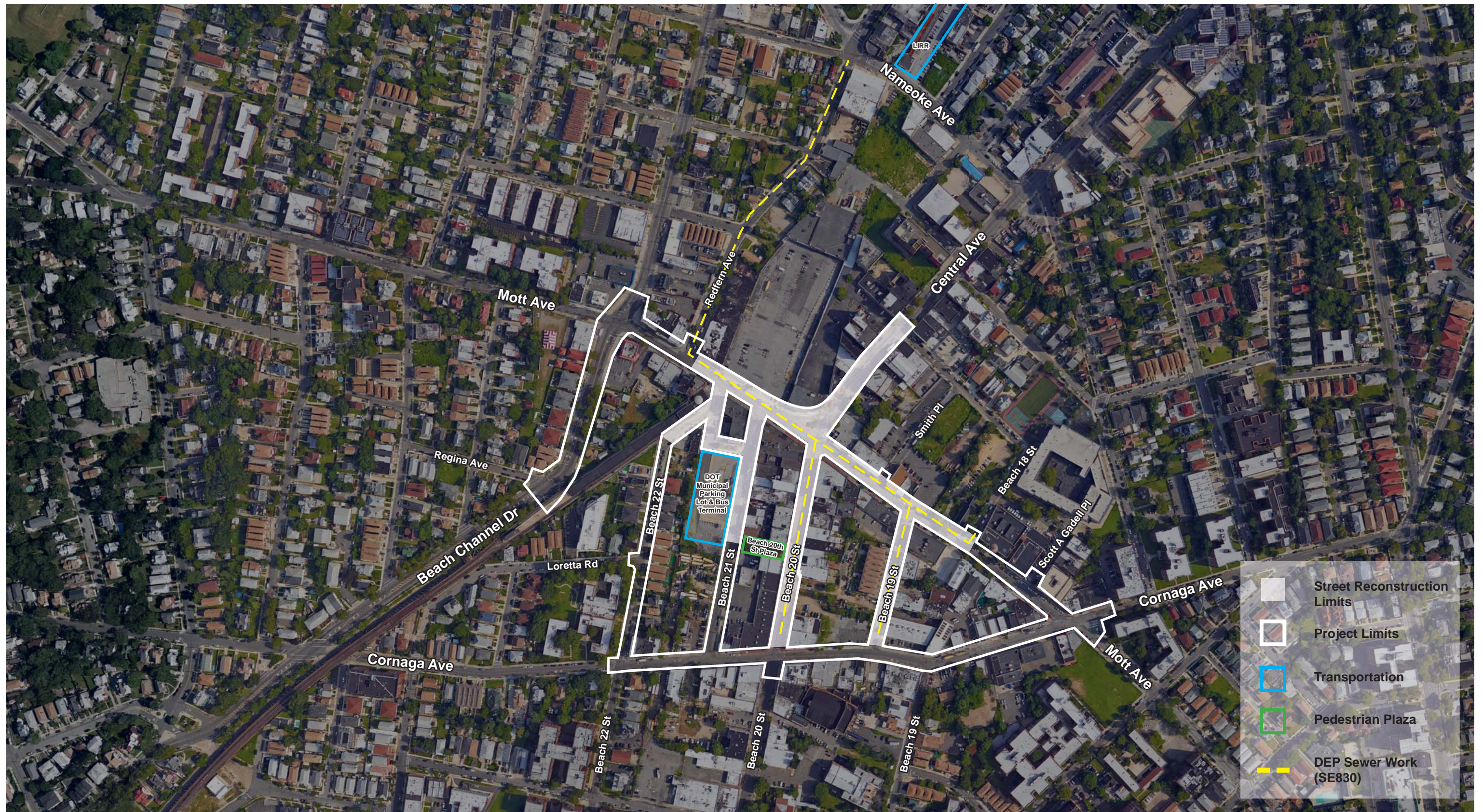


Design Framework: Patch-Corridor Network - Proposed

Far Rockaway Master Plan



NY Rising Community Reconstruction Program



Funding Partners



U.S. Department
of Transportation
**Federal Highway
Administration**



NYC
Mayor's Office of
Recovery & Resiliency

NYC
Environmental
Protection

Maintenance Partner



Design Team



W ARCHITECTURE & LANDSCAPE ARCHITECTURE, LLC



NYC
DDC Department of
Design and
Construction

"THE VILLAGE" FROM 1900 TO 2015



1900s, at Central Ave



1908, at Central Ave(Beach 20 St today) and Cornaga



1911, Mott Ave



1920s, at Central Ave



1938, Central Ave and Mott Ave looking south



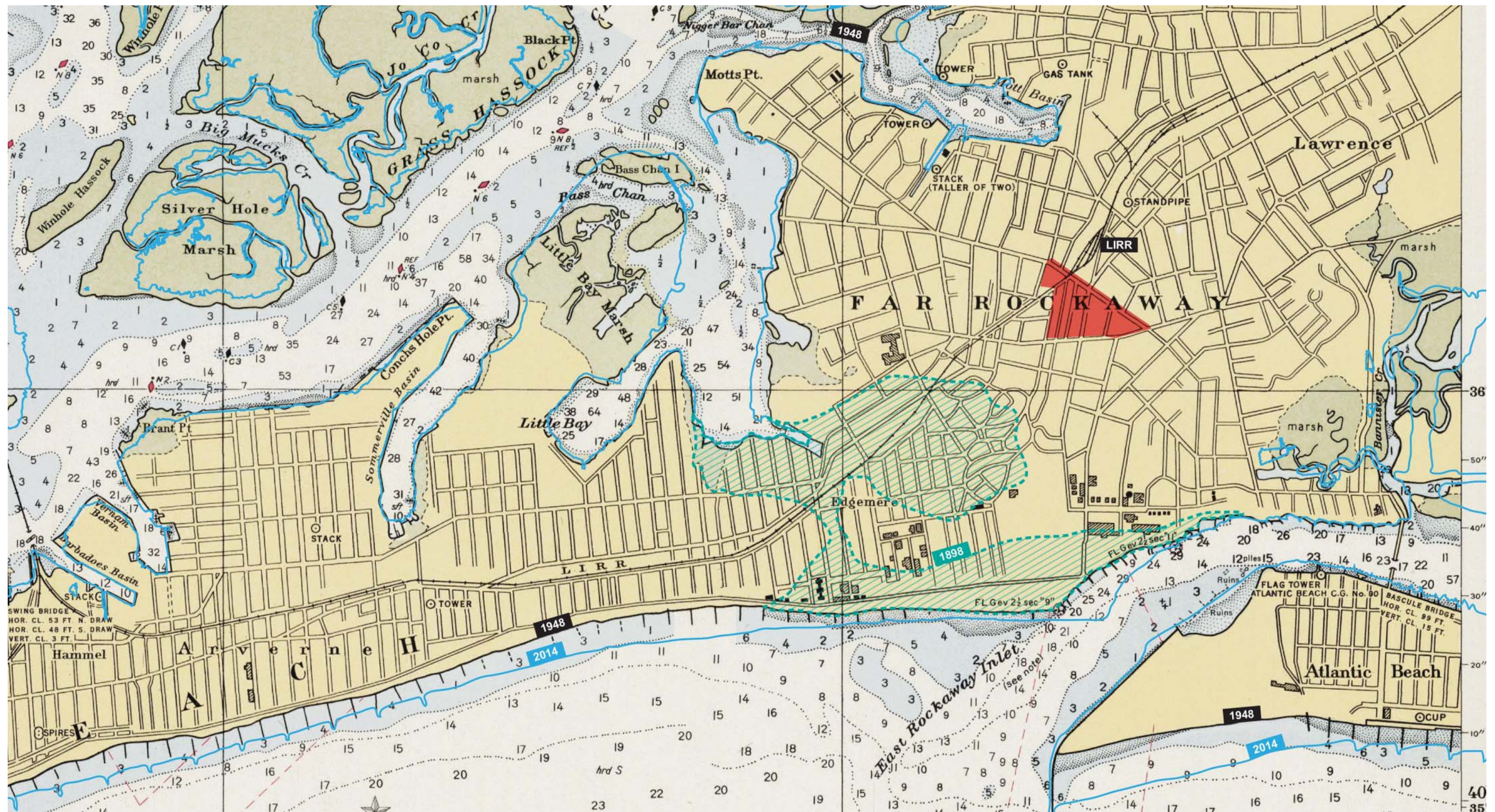
1940s, at Mott and Beach 21 St



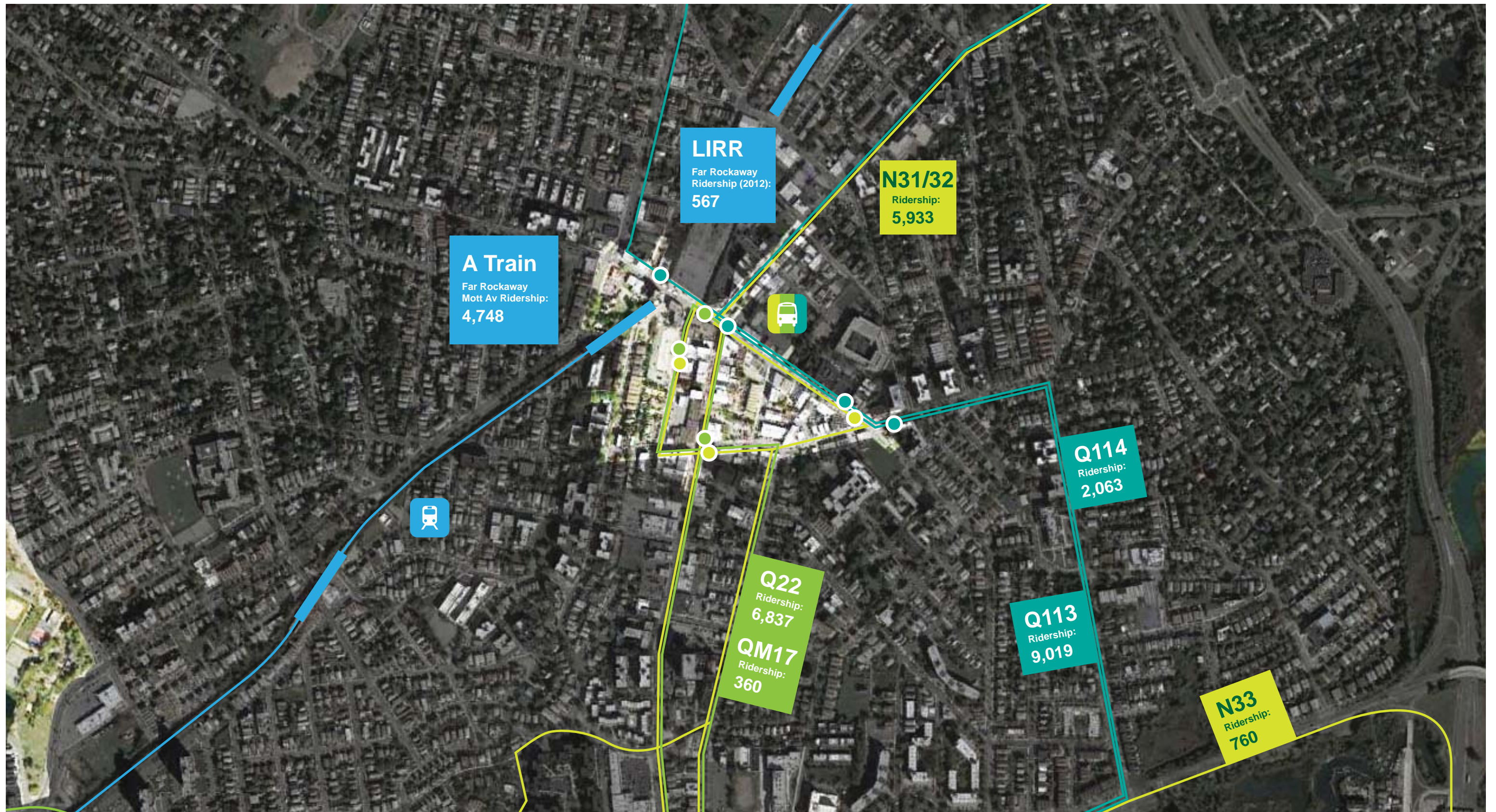
1940s, at Central Ave and Mott Ave looking north



2015, Mott Ave and Central Ave looking south









CRITICAL INVESTMENT



Renaissance Center: Historic



Renaissance Center: Renovated



Queens Library Far Rockaway Branch



MTA A Train Station



Beach 20th St Plaza (under construction)



Rockaway Beach Boardwalk



EXISTING LANDUSE



1. Commercial Core: “The Village”



2. Central Ave looking north



EXISTING SIDEWALKS



1. Lack of crosswalks: Jaywalking



2. Narrow sidewalk (7' wide)





Department of Transportation
Department of Design + Construction
January 6, 2015
W Architecture & Landscape Architecture

Downtown Far Rockaway Urban Design
and Streetscape Reconstruction
Community Board 14: Transportation Committee
Borough of Queens

RESIDENTIAL AREA



Department of Transportation
Department of Design + Construction
January 6, 2015
W Architecture & Landscape Architecture

Downtown Far Rockaway Urban Design
and Streetscape Reconstruction
Community Board 14: Transportation Committee
Borough of Queens

INSTITUTIONAL AREA

Community Meeting

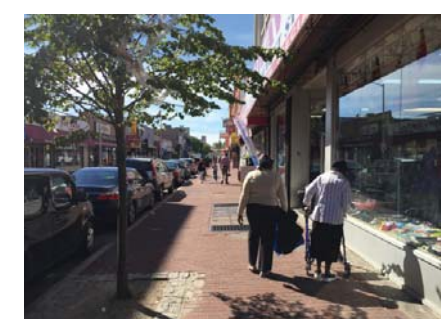
November 5, 2015

- Street lights
- Wider sidewalks
- Safe crosswalks
- Easy access to public transit
- Public seating areas
- Trees and vegetation
- Shade
- New paving
- Space for community/cultural events
- Playgrounds, space for kids
- Stormwater management
- Easy access to and from retail





OPPORTUNITIES FOR A VILLAGE-LIKE DOWNTOWN FAR ROCKAWAY



Beach 20th Commercial Corridor



Beach 22nd Residential



Mott Avenue at Beth-El Temple



Historic Beth-El Temple



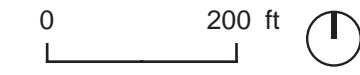
Central and Mott Avenue Intersection



Low Scale Commercial Corners



Historic Post Office



Department of Transportation
Department of Design + Construction
January 6, 2015
W Architecture & Landscape Architecture

Downtown Far Rockaway Urban Design
and Streetscape Reconstruction
Community Board 14: Transportation Committee
Borough of Queens

Schematic Design

VILLAGE CONTEXT



Templeuve transit station, France



Downtown Oak Park, Illinois

Village Main Street

Mott Ave Precedent Design Treatments



Community Resources: Library, Post Office, Transportation, Religious Institutions
 Physical Attributes: A collection of historic buildings, shade on the south side of Mott Avenue, more vegetation on east and west ends of the district, congested sidewalks
 Opportunities : Provide spill-out space on sidewalks, plant distinct trees on north side of Mott, provide staggered street lighting throughout Mott Avenue



Road Diet
 Usage: Provide safer conditions for pedestrians and vehicles by creating narrower streets



Gateway Plantings
 Usage: Provides distinct planted entrance to Mott Avenue at gateway points



Permeable Pavers
 Usage: Health of Trees
 Provides space for stormwater and tree root growth



Continuous Sidewalk
 Usage: Create consistency and clear desire lines for pedestrians



Regular Street Trees
 Usage: Enhance identity and visual consistency throughout Village Center district



CityBench
 Approximate dimensions: 7.5 feet long x 22 inches deep



Plantings in Curb Extensions
 Usage: Enhance planted identity of Mott Avenue at closed slip lane



Shared Street, Brighton, UK



Willoughby Plaza, Downtown Brooklyn, NY

Village Center

Beach 22, 21, 20 St & Central Ave
Precedent Design Treatments



Community Resources: Commercial activity, plaza spaces, public transportation
Physical Attributes: low-scale buildings, one-way traffic, underutilized wide sidewalks, overhead power lines, pedestrian plaza
Opportunities : Create an commercial district identity through regular and consistent paving patterns, raise street levels in locations of high pedestrian volume



Mid Block Crossings
Usage: Enhance circulation through commercial core



Vegetated Buffer
Usage: Provides distinct separation between Mott Avenue and sidewalk



Raised Crosswalks
Usage: Create consistency and clear desire lines for pedestrians



Spill Out Space
Usage: Provide expanded sidewalk space for commercial uses



London Scoring Pattern
Usage: Reinforces civic character of an area and creates continuity



Urban Plaza
Usage: Seating and gathering space between public transit areas



Sand Colored Concrete
Usage: It will only be used in plaza spaces with a maintenance partner.



Plantings in Plaza Spaces
Usage: Furniture and plants provide open gathering space for Far Rockaway residents



Chicane Street with Green Infrastructure, Shoreline, WA

Village Lanes

Beach 19 St Precedent Design Treatments



Community Resources: Quiet streets without much traffic, potential development sites
 Physical Attributes: Low-scale residential buildings, open lots on B 19th Street, streets end at T-intersections, deteriorated sidewalk condition, overhead power lines
 Opportunities : Create street calming measures to slow vehicles down, create open spaces through the use of shared streets, provide street trees and other plantings to provide vegetated urban landscape



Parking on Street
 Usage: Street trees and ample parking for residents



Vegetated Buffer
 Usage: Provide green barrier from the street for residential areas



Chicane
 Usage: Forces slower driving and greater awareness for residents



Green Infrastructure
 Usage: Stormwater capture and reuse



Plantings in Extended Curb
 Usage: Provide vegetation at curb extensions



Regular Street Trees
 Usage: Enhance identity and visual consistency throughout residential streets

Street Furniture

- City Light
- Realtime Wayfinding
- Wifi
- CityBench
- Bus Stop Shelter
- CityRack



City Light



Bus Stop Shelter



CityBench



CityRack



Wifi



Realtime Wayfinding





0 200 ft

Department of Transportation
Department of Design + Construction
January 6, 2015
W Architecture & Landscape Architecture

Downtown Far Rockaway Urban Design
and Streetscape Reconstruction
Community Board 14: Transportation Committee
Borough of Queens

Schematic Design

PROPOSED COMMUTER VAN & BUS OPERATIONS

OPPORTUNITIES FOR EASY ACCESS AND SAFE CONNECTION TO DIFFERENT MODES OF TRANSPORTATION



Train Station, Padova, Italy



Under the Elevated, Bronx, NY



Bus Stop, Baltimore, Maryland



Select Bus Service, NYC



Bus Stop, Stillwell Avenue, Brooklyn



Ecosaver IV Bus, NYC



Protected Bike Lane, 1st Avenue, NYC



Dedicated Bike Lane, Brooklyn Heights



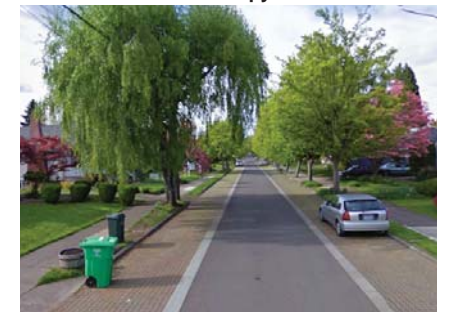
OPPORTUNITIES FOR STORMWATER MANAGEMENT AND PLANTING



Hudson Square, NYC



Mature Street Tree Canopy



Porous Parking Lanes



Full Sidewalk Green Infrastructure



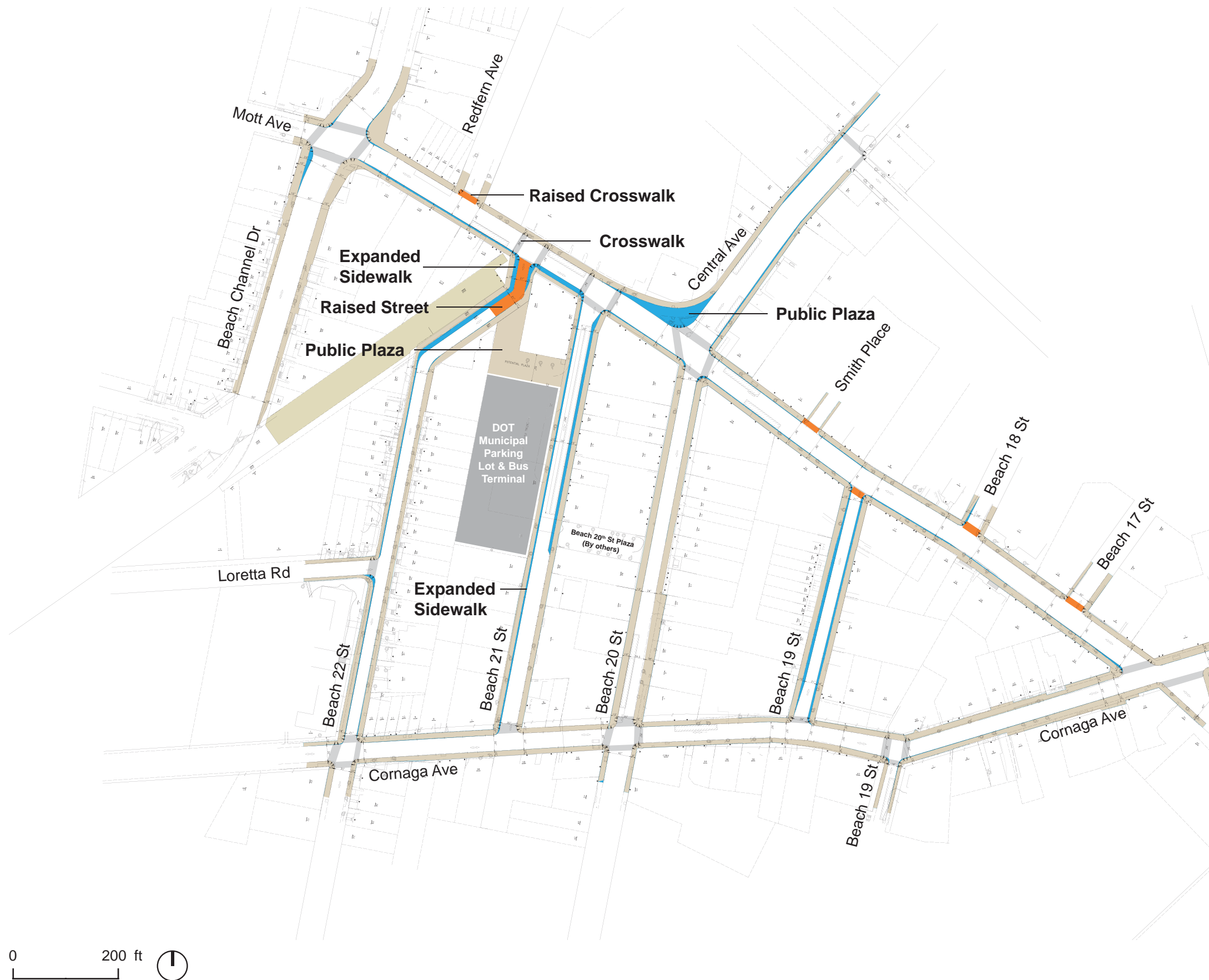
Rain Garden in Extended Curb



Full Sidewalk Green Infrastructure



Shared Street



OPPORTUNITIES FOR NEW PUBLIC SPACES AND AN ACTIVE PEDESTRIAN ENVIRONMENT



Raised Crosswalk



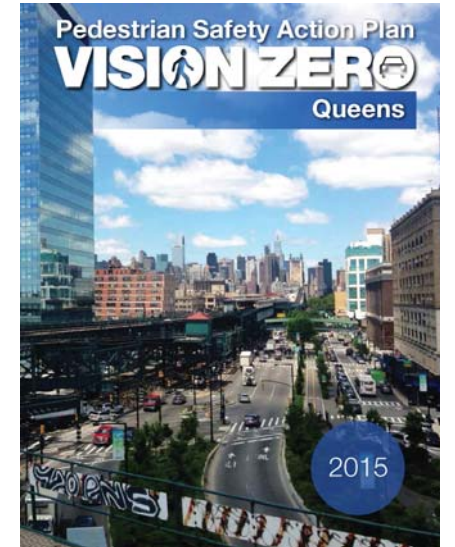
Traffic Calming (Chicane)



Raised Street



Protected Bike Lane



Vision Zero



Slow Zone



OPPORTUNITIES FOR NEW PUBLIC SPACES AND STREETSCAPES



Shared Street, Germany



Water play, West Harlem Piers Park



Tree Plantings, West Harlem Piers Park



Shared Street, Brighton, UK



Seating at The Edge Park, Brooklyn



Open Space, West Harlem Piers Park



37th Road Plaza, Jackson Heights, Queens



37th Road Plaza, Jackson Heights, Queens

0 50 ft