



ELECTRIC VEHICLE CHARGING PROGRAM

Community Board 3 Full Board Briefing
June 24th 2019

© NYC DOT



Curbside EV Charging Pilot Program

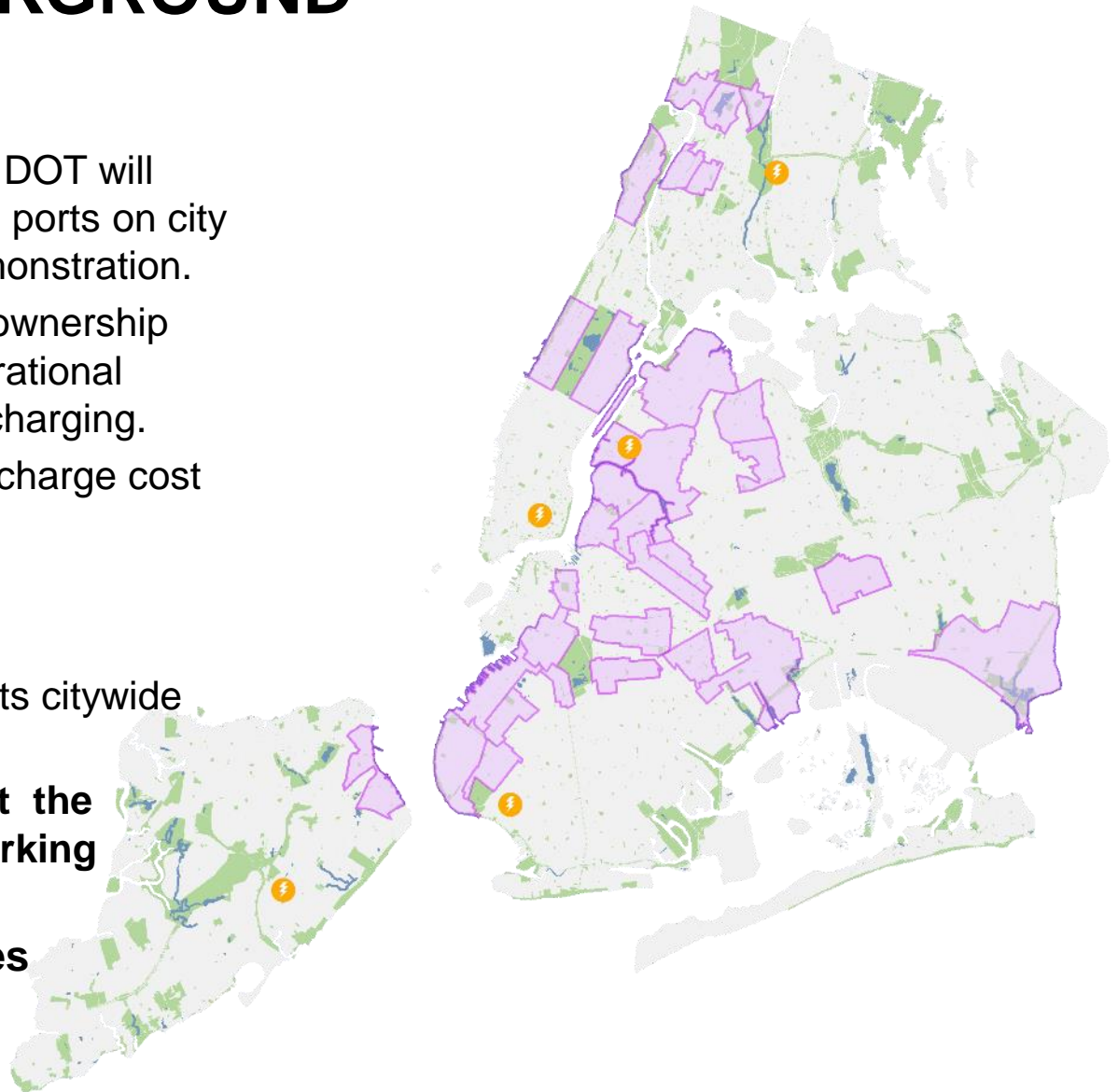
PROJECT BACKGROUND

Project Structure:

- **Partnership:** Con Ed and DOT will install 100 L2 EV charging ports on city streets for a four year demonstration.
- **Purpose:** Encourage EV ownership and test financial and operational feasibility of curbside EV charging.
- **User Cost:** Pay per time, charge cost comparable to gas

Project Details:

- 100 curbside charging ports citywide for public use
- **In CB3, we are looking at the following numbers of parking spaces:**
 - **4 parking spaces**



CURBSIDE CHARGER: HOW IT WORKS

RGBW LED Status Lights



Flashing white: The charger is waiting for the user to start a charge event.

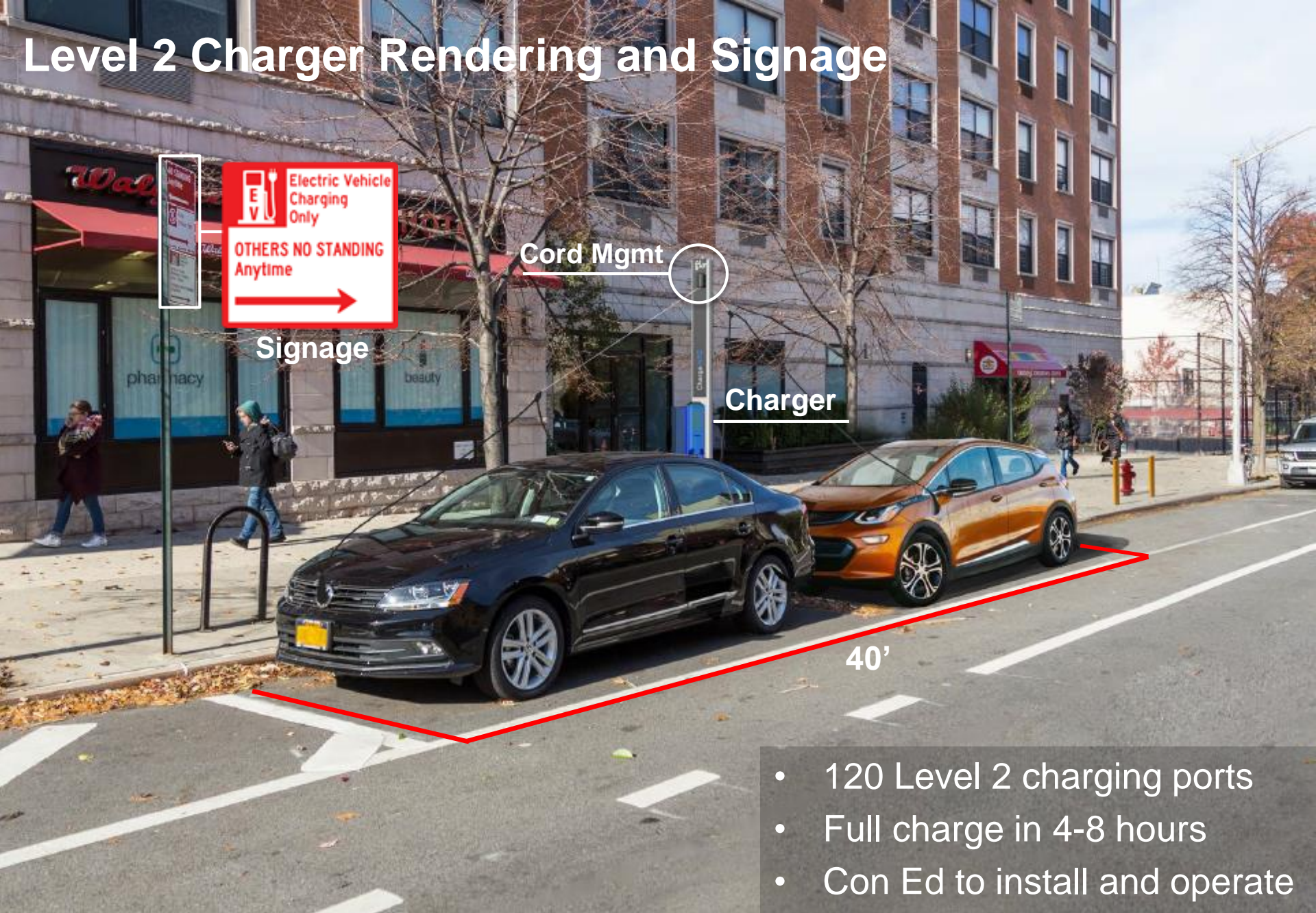
To start a Charge Event:

Once the user authentication is completed and the status light is flashing white

- 1 Open the flip-up door
- 2 Remove the connector from its holster
- 3 Open the vehicle charge port
- 4 Insert the connector into the vehicle charge port



Level 2 Charger Rendering and Signage



Electric Vehicle Charging Only
OTHERS NO STANDING Anytime

Signage

Cord Mgmt

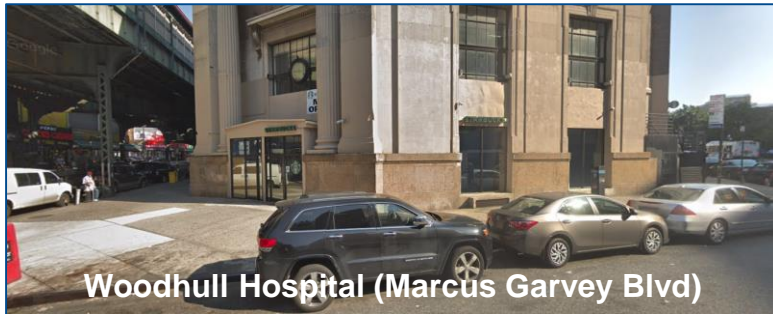
Charger

40'

- 120 Level 2 charging ports
- Full charge in 4-8 hours
- Con Ed to install and operate

CB 3 SITE SELECTION AND SITES

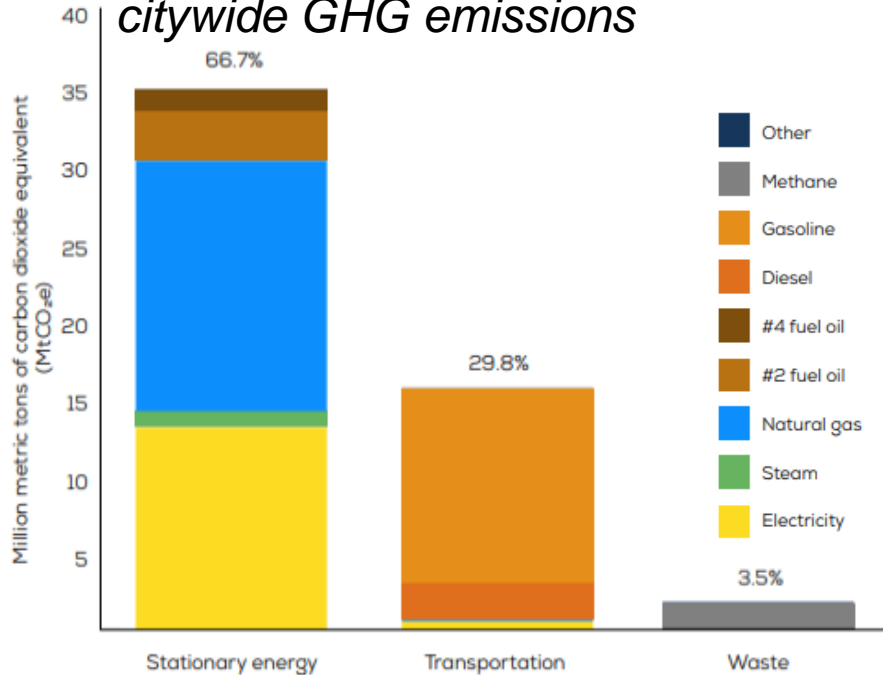
Near major institutions, educational institutes and medical centers, commercial activity – high visibility, turnover, and utilization



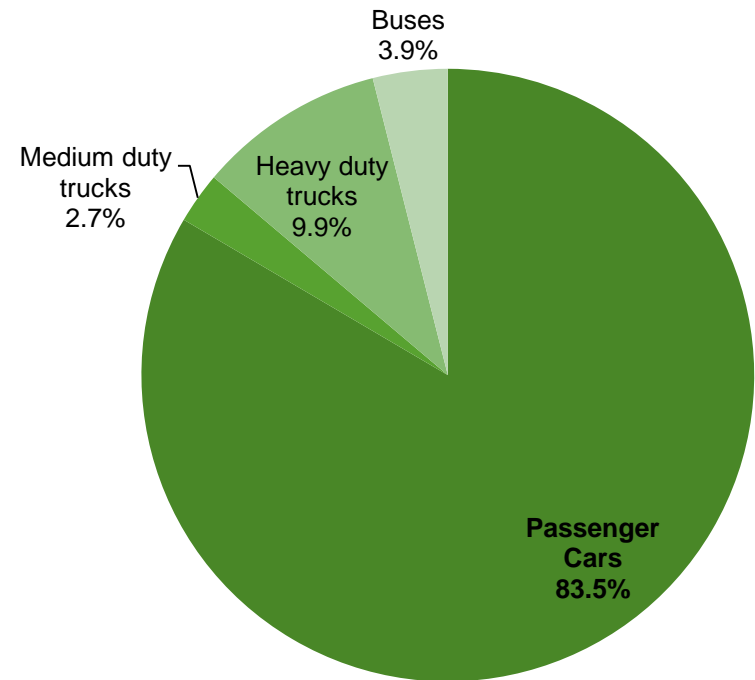
Background

CHALLENGE: PRIVATE CARS ARE A MAJOR SOURCE OF GHG EMISSIONS

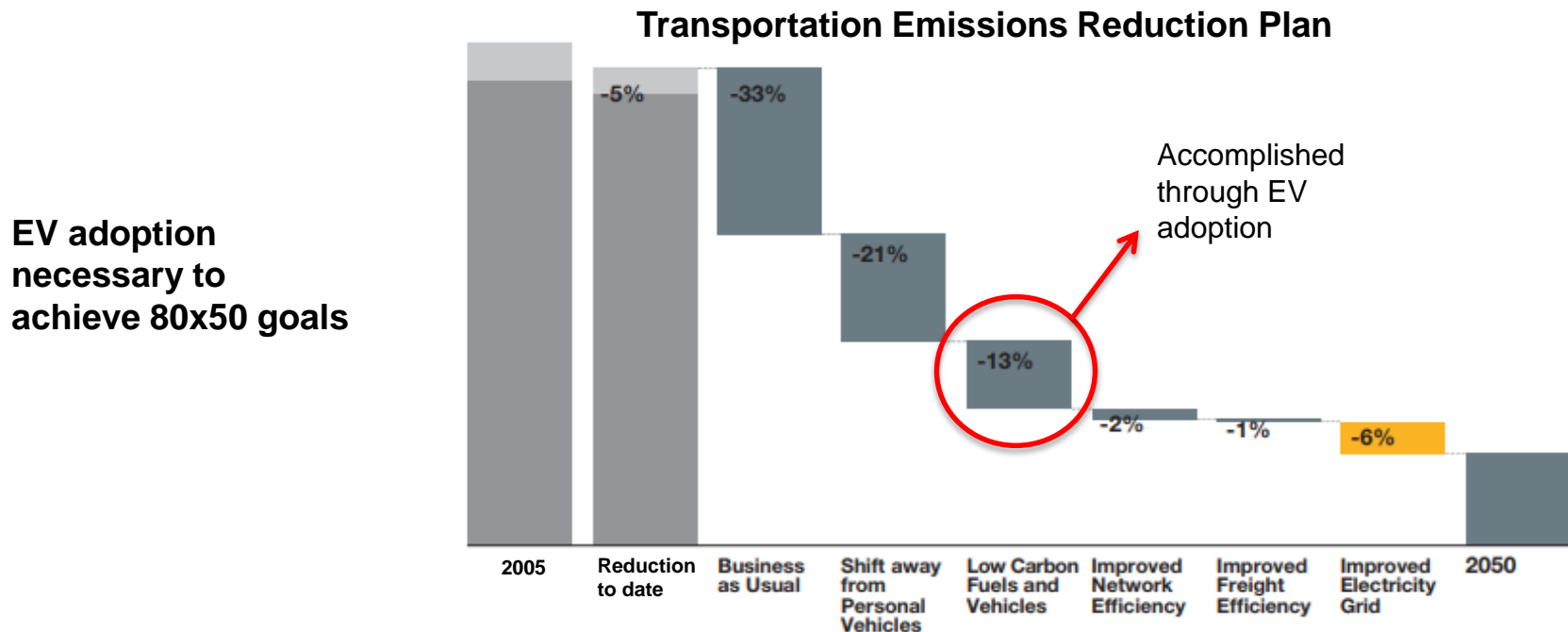
Transportation: constitute 30% of citywide GHG emissions



Passenger Cars: 83% of on-road transportation GHG emissions






INCREASING THE ADOPTION OF EVS IS KEY TO ACHIEVING CITY'S GHG GOALS



- **Goals of 80x50 plan and Paris Climate Agreement Executive Order 26:** requires electrification of most of the city's 1.8 M private light-duty vehicles.
- **Mayor's goal for 20% of new NYC vehicle registrations be EV by 2025:** requires more on- and off-street EV charging

EV CHARGING: HOW IT WORKS

	Level 1 	Level 2 	DC Fast 
Power Requirements	120V (1-3 kW)	240V (3-10 kW)	480 Volts (25-150 kW)
Charging Speed	5 miles per hour, 12+ hours for a full charge	12-25 miles per hour, 4-6 hours for a full charge.	100-600 miles per hour, 30 minutes for a full charge
Location	Home garage	Home garage, on street or parking field	Commercial locations, short stops, near highways

OUTREACH PROCESS

Outreach

- CM Reynoso December 2018
- BP Adams 2018 and 2019
- Brooklyn DMs February 2019
- CM Cornegy February 2019
- CB3 TC May 2019

Public Feedback

- Launch public feedback portal where public can provide feedback on where DOT should or shouldn't locate chargers

Pilot Zones

- Notify elected officials and community boards where pilot neighborhoods are chosen, offer and conduct briefings on the program and feedback on suggested locations.

Installation

- Fall 2019 for Authorized Parking for City Fleet, followed by installation of curbside public chargers.

Feasibility and Final Site Notification

- July notification to impacted CBs and electeds.
- September notification to impacted CBs and electeds

CB Engagement

- Outreach to Community Boards and offer presentations and feedback on suggested locations.

THANK YOU!

Visit the NYC DOT Public Portal for FAQs on EV and to add a location for EV:

www.nyc.gov/charge

New York City Department of Transportation
Projects & Initiatives

Select Language + A - A NEW YORK CITY DOT


Curbside Level 2 Electric Vehicle Charging

NYC DOT project to install 100 curbside level 2 electric vehicle chargers across New York City.

Dashboard

Project Home
Overview
Where Should DOT Install Curbside EV Chargers?
Accessibility
Request an EV Charger Outside Your Business

PLANNING



PROJECT UPDATES

Thursday, August 30, 2016 - 10:53

Where would you like to see curbside EV chargers? Show us!

NYC DOT thanks you for your interest in curbside level 2 electric vehicle charging. Your feedback will help inform planners as they site 100 level 2 EV chargers across New York City.



QUESTIONS?

© NYC DOT

