



# Edgecombe Ave & West 136-137 Sts

---

Presentation to Community Board 10

April 12, 2022



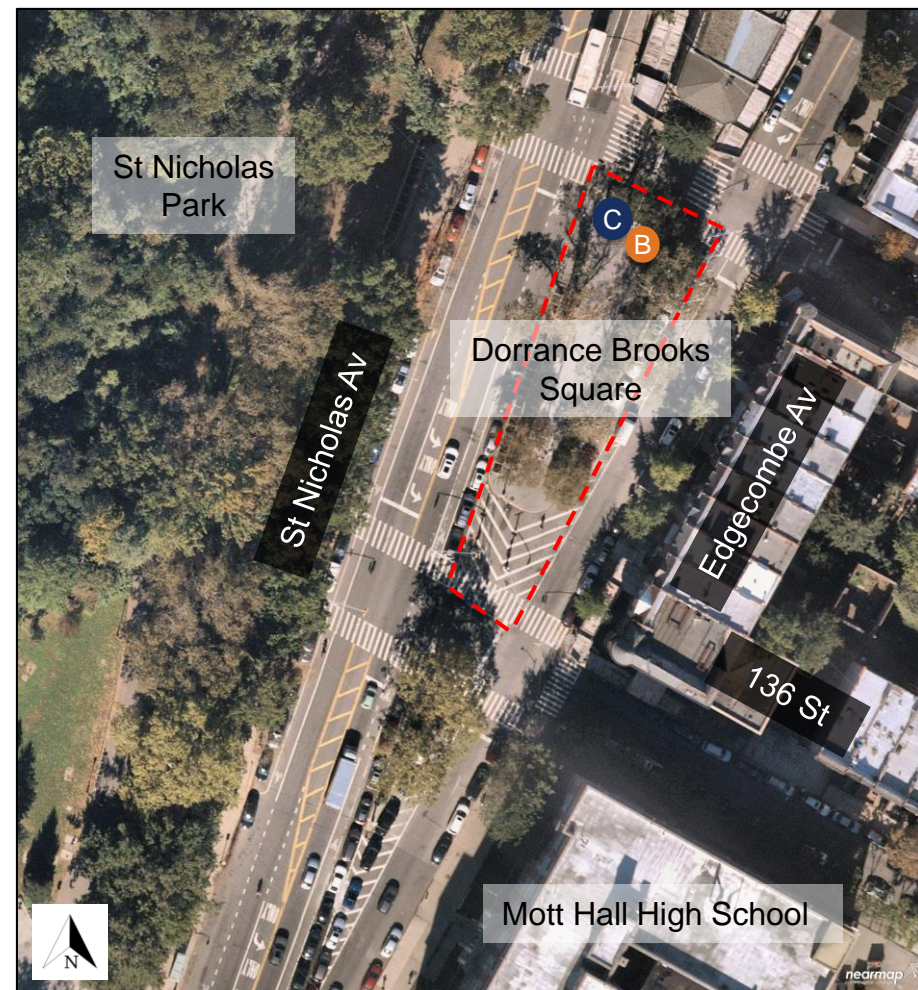
---

# Background

1

# Background

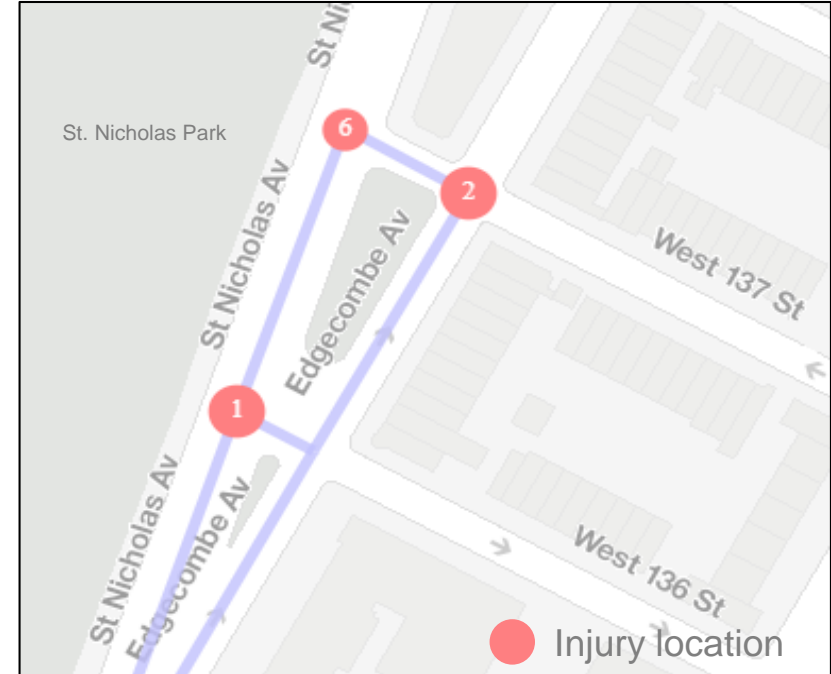
- January 2022 - met with CB10 Transportation Committee Chair to discuss formalizing pedestrian space at Dorrance Brooks Square
- February 2022 – met with Parks Department to discuss future capital improvements
- Future school safety capital project at St Nicholas Av and 135 St
- Project site is located near St Nicholas Park, Mott Hall High School, and the 135 Street Subway Station (B,C Trains)



# Safety Data

## Edgecombe Ave, W 136-137<sup>th</sup> Sts Injury Summary, 2015-2019 (5 years)

	Total Injuries	Severe Injuries	Fatalities	KSI
Pedestrian	4	0	0	0
Bicyclists	0	0	0	0
Motor Vehicle Occupant	5	0	0	0
Total	9	0	0	0



---

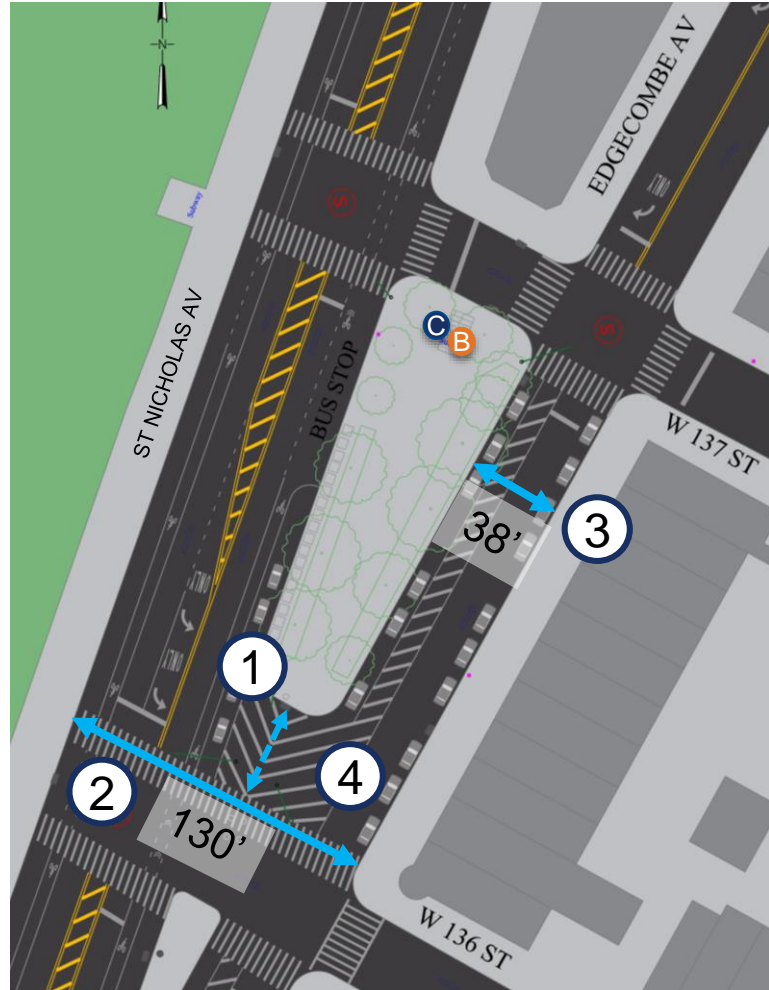
Existing Condition

2



# Existing Condition

- 1 Dorrance Brooks Square does not connect to existing crosswalk at W 136 St
- 2 Crosswalk on W 136 St is a long distance at 130 feet and crosses two streets
- 3 Edgecome Av is wider than the typical 30 feet wide one-way street
- 4 Parking ends at edge of concrete island



# Toolkit

---



Painted Pedestrian Space with Flexible Delineators



Curb regulations and signage



Signal Timing Changes



Parking

---

## Proposed Condition

3

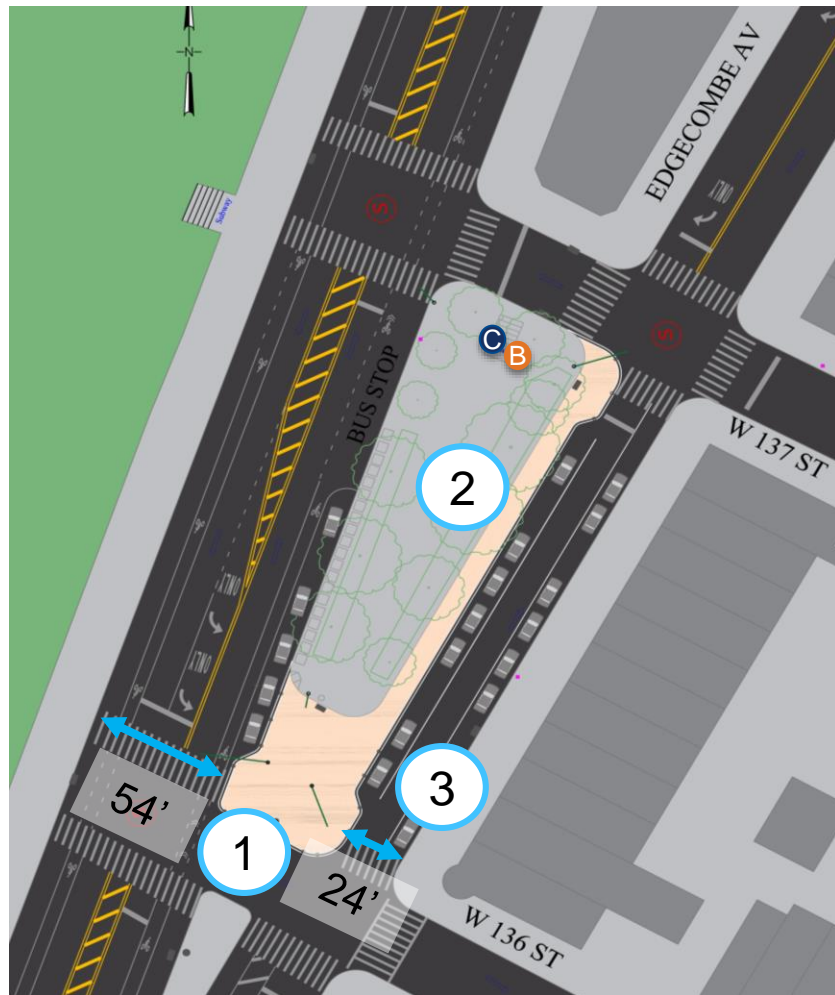


# Proposed Condition

- 1 Install a painted island extension to connect pedestrians to W 136 St and shorten crossing distances
- 2 Install a painted sidewalk on the west side of Edgecombe Av
- 3 Extend parking along Edgecombe Av



Broadway and Isham St



# Future Build Out

- After project implementation the area will be considered for a future capital build out
- Project sets the geometry and allows for safety benefits now
- Process could take 10+ years (funding, design, procurement)
- Collaboration between DPR and DOT
- LPC approval needed



# Timeline





# Project Benefits

## Benefits

- Formalize pedestrian space
- Provides safer, shorter pedestrian crossings
- Increase visibility
- Traffic calming



# Thank You!

## Questions?



NYCDOT



nyc\_dot



nyc\_dot



NYCDOT



# Parking

Net 0

